

MIGRARE



THE ULTIMATE FLARING & SWAGING TOOLS

COMPLIANT WITH
AMERICA'S
HVAC
STANDARDS

**1 YEAR
WARRANTY**



PATENT PENDING

EASY
NO REAMING

10X
FASTER

FITS INTO ANY
DRILL 1800 RPM
18V

HEAT
BY FRICTION

AVOID
CRACKS AND LEAKS

HIGH TEMPERATURE SWAGING AND FLARING TOOLS FOR COPPER AND ALUMINUM TUBING

High Temperature Operation

Preserves copper's/aluminum's malleability during the process

Ideal for Ductless A/C and Mini Splits Applications

Designed for the most common tubing diameters in HVAC

Maximum Performance and Lifespan

Designed to last longer than 4,000 times



WWW.FLARINGSPIN.COM

sales@migrare.com

Check out further details about SPIN features on our website



MIGRARE

WWW.FLARINGSPIN.COM

FLARING SPIN
Deliver flares with more area of contact between the valve and the flare, avoiding cracks and leaks.



FLARING SPIN SET FSPIN100
Flaring Set with 4 tools



FLARING SPIN SET FSPIN300
Flaring Set with 5 tools



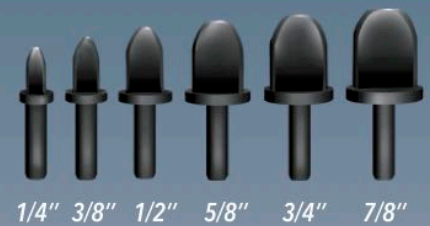
SWAGING SPIN
For hard and soft copper tubing. Great Swaging Depth. Easier to Braze.



SWAGING SPIN SET SSPIN100
Swaging Set with 5 tools



SWAGING SPIN SET SSPIN300
Swaging Set with 6 tools



NEW

SWAGING SPIN TOOL SSPIN378
7/8"



IDEAL FOR DUCTLESS A/C & MINI SPLITS APPLICATIONS

The Spin tools are compatible with high pressure evaporation and condensation systems, such as R410a Mini Split lines.

PATENT PENDING



ACCESS OUR YOUTUBE CHANNEL AND CHECK FOR MORE INFORMATION ABOUT MIGRARE SPIN TOOLS
flaringspin.com/youtube



FLARING SPIN TOOL FSPIN100

Product Documentation

Thank you for purchasing your new Flaring SPINs and welcome to the high temperature leakage-free flaring concept, designed from the ground up to HVAC systems.

The documentation for this product includes this User's Manual and the complementary Technical Documentation, available for download at www.flaringspin.com. Complementary instructional videos are also available at www.flaringspin.com/videos.

For reaching maximum performance out of the use of your Flaring SPIN tool, carefully read these instructions and keep this manual for further reference.

Packaging Content

The Flaring SPIN set FSPIN100 includes 4 Flaring Diameters:



Extra Features



Up to 10x faster than conventional tools



Works either with a corded or a cordless drill*



No reaming process required**

**Cleaning the tubing is a standard procedure in any air conditioning system. The use of the SPIN Tools does not exclude the user from doing this procedure.

Safety Information

Read and follow these instructions carefully:



The Flaring SPINs use a **HIGH TEMPERATURE** technology, due to friction between the metallic tube and the tool. For your safety, consider it **HOT** at all times.



Wait until the metallic tube and the tool to cool down before placing your hand onto the tube or the tool surface.



Always use protective gloves while working with the Flaring SPIN. **SFI LEVEL 10** protection gloves. Direct skin contact with the tube or the tool may result in serious injuries and burns.

Always keep the Flaring SPIN well attached and fastened into the power tool you are using (Corded Drills, Cordless drills).



Always use protective glasses while working with the Flaring SPIN. **ANSI Z87.1** eye protection (CAN/CSA Z94.3). Occasionally, chips may occur during the Flaring process and may get to your eyes, causing severe injuries, burns or even loss of vision.

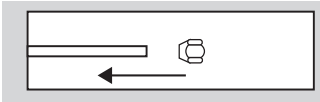
Do not use any loose clothing and jewelry or approach the tool with loose long hair during the operation of the tool, as it may entangle and get caught around it, causing serious personal injury.

Stay alert, watch what you are doing and use common sense when operating the Flaring SPIN. Do not use the Flaring SPIN while you are tired or under the influence of drugs, alcohol or medication. A moment of inattention while operating the Flaring SPIN may result in serious personal injury.

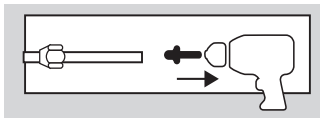
Store the tools out of the reach of children and do not allow people unfamiliar with the Flaring tool or these instructions to operate the Flaring tool.

Instructions for Use

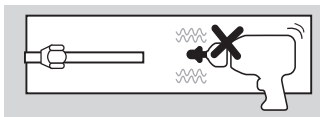
1. First, put the nut through the metallic tube;



2. Fasten the Flaring SPIN correspondent to the tube diameter, into the drill/screwdriver's chuck, making sure it is not loose.

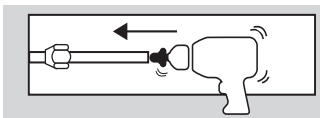


3. Make sure the HAMMERING MODE is OFF. Make sure the tubing is firmly held at all times. You may use your other hand to do it.

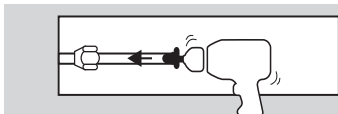


4. Turn ON, pull the trigger and keep the drill/screwdriver at MAXIMUM SPEED, at all time.

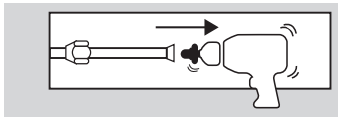
5. Keep the tube ALIGNED to the drill/screwdriver at all time and PUSH the Flaring SPIN all the way in, applying a CONSTANT PRESSURE, until the Stopper hits the tube.



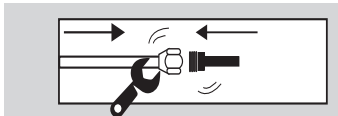
6. Keeping the tube ALIGNED to the drill/screwdriver and also keeping the drill/screwdriver at MAXIMUM SPEED, pull off the Flaring SPIN from inside the tube. Remember: the whole Flaring process, in and out, shouldn't take more than 5 to 7 seconds.



7. Right after the flaring process, the tube temperature is very high. Don't touch it. Wait the heat to dissipate before touching the flare. The final result will deliver a 35 degrees, malleable flare, able to adapt itself to any flaring angle from 37 to 45 degrees, without cracking or leaking.



8. Assemble the nut into the equipment valve using a wrench for the coupling. As you're doing this, the nut and the valve will shape the flared tube to its final angle and position, without cracking or leaking afterwards.



*Minimum Requirements

The SPIN tools are designed to work along with drills and/or screwdrivers, with minimum of 1,800 RPM and 500 watts for corded drills, or superior and 1,800RPM and 18V, or superior, for cordless drills.

Using the SPIN tools along with less powerful equipment may result in high decrease of performance.

Customer Service

Cimport International LLC
info@flaringspin.com
+1-203-587-0336

www.flaringspin.com

