

4

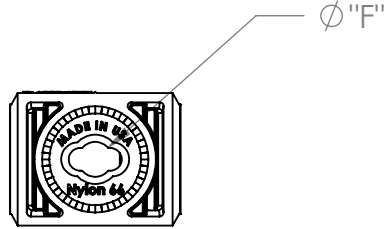
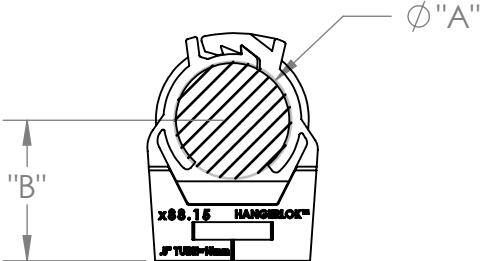
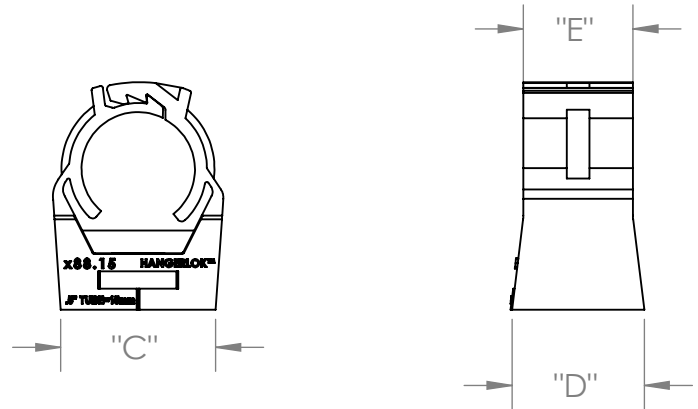
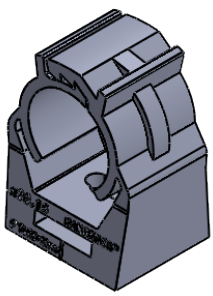
3

2

1

SIZE TABLE	Ø A		B	C	D	E	Ø F
	MIN.	MAX.					
INCHES	0.59	0.66	0.78	.81	0.70	0.57	.18
MM	15.0	16.8	-	-	-	-	-

PART NUMBER	MATERIAL
<u>H</u> 88.15-LOK	NYLON 6/6
<u>A</u> 88.15-LOK	HDPE



PROPRIETARY AND CONFIDENTIAL
 THE INFORMATION CONTAINED IN THIS DRAWING IS THE SOLE PROPERTY OF LITCHFIELD-HANGERLOK. ANY REPRODUCTION IN PART OR AS A WHOLE WITHOUT THE WRITTEN PERMISSION OF LITCHFIELD_HANGERLOK IS PROHIBITED.

UNLESS OTHERWISE SPECIFIED:	NAME	DATE
DIMENSIONS ARE AS NOTED IN TABLE.	DRAWN	JS 11/20/2020
	MFG APPR.	
	Q.A.	
	COMMENTS:	
MATERIAL	See Chart	
FINISH	-	

Litchfield-HangerLok

TITLE: HANGERLOK #15

SIZE	DWG. NO.	REV
A	X88.15-LOK rev A	A

DO NOT SCALE DRAWING SHEET 1 OF 1

4

3

2

1

D

D

C

C

B

B

A

A