



5D51-35

**5D51 SERIES
UNIVERSAL FAN AND LIMIT CONTROLS**

Single Element Type for Applications with Narrow Space Limitations. Regulates Fan or Blower Operation and Acts as High Limit Safety Control

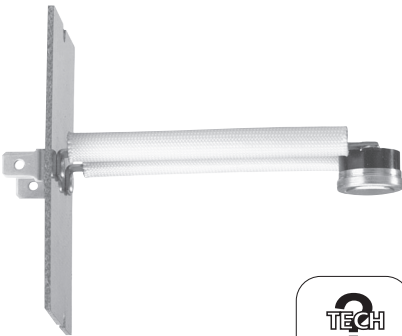
FEATURES

- Slotted mounting holes for easy installation.
- Long terminal screws for wiring — Junctions can be made on terminal block.
- Dial has individual pointers for fan cut-in and cut-out settings.
- Removable solid copper jumper between fan and limit switches.
- Summer fan switch for ventilation without changing control settings. Has same fan and limit switch mechanism.

SPECIFICATIONS

Agency U.L. recognized and C.S.A. approved
Dimensions 2.9"W x 4.3"H x 1.6"D

Model Number	Element Length	Description	Range	Differential	Switch Action	Full Electrical Rating	Motor Rating (Full Load)		Valves and Relays	
							120 VAC	240 VAC	24 VAC	0.3-12V DC
5D51-35	5"	Fan	50 to 265°F (10 to 129°C)	Adjustable 15°F minimum	Close on Rise	HT See page 222	14.0A	7.0A	5.6A	—
5D51-90	8"	Limit	100 to 300°F (38 to 149°C)	Fixed 25°F	Open on Rise	HTV See page 222	10.0A	6.0A	6.0A	1.0A
5D51-78	11"									



3L09 SERIES BOARD MOUNT LIMIT CONTROLS

1/2" Bimetal Disc with Ranges for Your System Needs

FEATURES

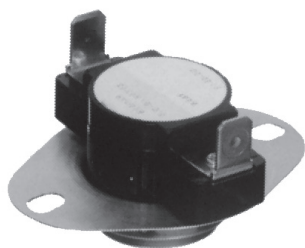
- Proven reliability in a compact, versatile, cost-effective design.
- Provides high-speed contact separation.
- OEM replacement for competitive models.

SPECIFICATIONS

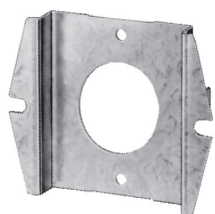
Dimension drawings and specifications See pages 194–196

Model Number	Figure (pages 194-196)	Construction (pages 194-196)	Opens/Closes (°F)	Length (in inches)	TOD Type	TOD Style
3L09-1	1		140/100	1.87	36T	612700
3L09-2	1		170/130	1.87	36T	612708
3L09-3	2	A	140/110	3.12	36T	612701
3L09-4	2	C	150/130	3.12	36T	612703
3L09-5	2	C	160/140	3.12	36T	612706
3L09-6	2	B	170/130	3.12	36T	612710
3L09-7	2	A	175/145	3.12	36T	612711
3L09-8	2	B	180/140	3.12	36T	612714
3L09-9	2	C	190/170	3.12	36T	612715
3L09-10	2	B	200/160	3.12	36T	612718
3L09-11	2	B	210/170	3.12	36T	612719
3L09-12	2	B	220/180	3.12	36T	612722
3L09-13	2	A	240/210	3.12	36T	612723
3L09-14	2	B	250/210	3.12	36T	612725

Model Number	Figure (pages 194-196)	Construction (pages 194-196)	Opens/Closes (°F)	Length (in inches)	TOD Type	TOD Style
3L09-15	2	A	260/230	3.12	36T	612727
3L09-16	3	A	150/130	3.12	36T	612704
3L09-17	3	A	250/225	3.12	36T	612726
3L09-18	3	B	155/125	7.12	36T	612705
3L09-19	3	B	175/145	7.12	36T	612712
3L09-20	3	B	240/210	7.12	36T	612724
3L09-22	4	A	160/140	3.12	36T	612707
3L09-23	4	A	170/150	3.12	36T	612709
3L09-24	4	B	190/170	3.12	36T	612716
3L09-25	4	B	200/180	3.12	36T	612717
3L09-26	5		180/160	1.87	36T	612713
3L09-27	5		220/200	1.87	36T	612721
3L09-28	6		210/180	3.12	36T	612720



3F01-140



F6-1798 (1 per pack)

3F01 SERIES SNAP DISC FAN CONTROLS

For Regulation of Fan or Blower Control

FEATURES

- Designed for quick on-job replacement.
- Easy to remember type numbers — “L” for Limit — “F” for Fan.
- Last three numbers indicate cut-out temperatures on limits and cut-in temperatures on fan controls.
- Mounting holes match standard 3/4” snap discs.
- Tab-to-screw terminal adapters furnished.

SPECIFICATIONS

Maximum ambient 350°F

ELECTRICAL RATINGS

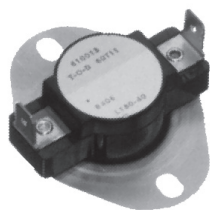
Model Number	Motor Rating (Full Load)		Resistive (Non-Inductive)		Pilot Duty
	120 VAC	240 VAC	120/240 VAC	277 VAC	120/240/277 VAC
3F01, 3F02	10.0A	5.0A	25.0A	21.6A	125 VA

PARTS AND ACCESSORIES

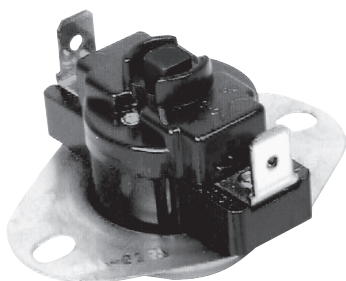
- F6-1798 Adapter plates (Order separately) — 1 per pack

FAN CONTROLS

Model Number	Fixed Temperature Settings		Switch Action	Therm-O-Disc	
	Cut-in	Cut-out		Style	Type
3F01-110	110°F (43°C)	90°F (32°C)	Close on Rise	60T12	610044
3F01-120	120°F (49°C)	110°F (43°C)	Close on Rise	60T12	610046
3F01-130	130°F (54°C)	115°F (46°C)	Close on Rise	60T12	610047
3F01-140	140°F (60°C)	120°F (49°C)	Close on Rise	60T12	610049
3F01-150	150°F (66°C)	130°F (54°C)	Close on Rise	60T12	610050
3F01-160	160°F (71°C)	140°F (60°C)	Close on Rise	60T12	610064
3F01-180	180°F (82°C)	160°F (71°C)	Close on Rise	60T12	610065
3F01-200	200°F (93°C)	180°F (82°C)	Close on Rise	60T12	610066
3F01-350	350°F (177°C)	320°F (160°C)	Close on Rise	60T12	610067



3L01-180



3L02-190



3L03-140

3L SERIES SNAP DISC FAN OR LIMIT CONTROLS

For Regulation of Fan, Blower or High Limit Safety Control

SPECIFICATIONS

Electrical Rating (AC) for Model Numbers	Motor Rating (Full Load)		Resistive (Non-Inductive)		Pilot Duty
	120 VAC	240 VAC	120/240 VAC	277 VAC	
3L01	10.0A	5.0A	25.0A	21.6A	125 VA
3L02	10.0A	5.0A	25.0A	21.6A	125 VA
3L03: 1 & 2 Close on Rise	5.8A	2.9A	—	—	125 VA
3L03: 1 & 3 Open on Rise	10.0A	5.0A	25.0A	21.6A	125 VA

Model Number	Fixed Temperature Settings		Switch Action	Therm-O-Disc	
	Cut-in	Cut-out		Style	Type
3L01-120	110°F (43°C)	120°F (49°C)	Open on Rise	60T11	610000
3L01-130*	115°F (46°C)	130°F (54°C)	Open on Rise	60T11	610002
3L01-140	100°F (38°C)	140°F (60°C)	Open on Rise	60T11	610006
3L01-150	110°F (43°C)	150°F (66°C)	Open on Rise	60T11	610009
3L01-165	125°F (52°C)	165°F (74°C)	Open on Rise	60T11	610069
3L01-170	130°F (54°C)	170°F (77°C)	Open on Rise	60T11	610012
3L01-180	140°F (60°C)	180°F (82°C)	Open on Rise	60T11	610013
3L01-190	150°F (66°C)	190°F (88°C)	Open on Rise	60T11	610015
3L01-200	160°F (71°C)	200°F (93°C)	Open on Rise	60T11	610016
3L01-230	190°F (88°C)	230°F (110°C)	Open on Rise	60T11	610021
3L01-250**	210°F (99°C)	250°F (121°C)	Open on Rise	60T11	610023
3L01-300*	250°F (121°C)	300°F (149°C)	Open on Rise	60T11	610026
3L01-350	310°F (154°C)	350°F (177°C)	Open on Rise	60T11	610068

*3L01-130 and -300 terminals at 45° angle

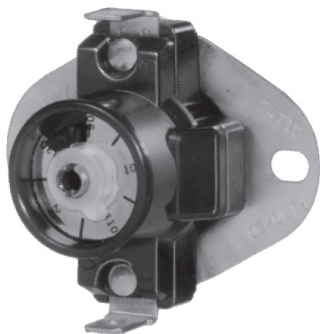
**3L01-250 terminals horizontal to bracket

LIMIT CONTROLS – MANUAL RESET

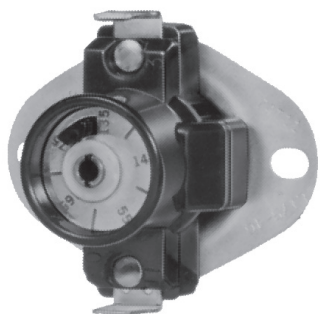
Model Number	Fixed Temperature Settings		Switch Action	Therm-O-Disc	
	Cut-in	Cut-out		Style	Type
3L02-160	Manual Reset	160°F (71°C)	Open on Rise	60T15	330534
3L02-170		170°F (77°C)	Open on Rise	60T15	330535
3L02-180		180°F (82°C)	Open on Rise	60T15	330536
3L02-190		190°F (88°C)	Open on Rise	60T15	330537
3L02-200		200°F (93°C)	Open on Rise	60T15	330538

SPDT CONTROLS

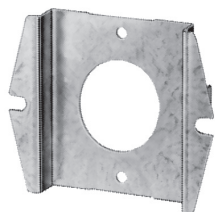
Model Number	Fixed Temperature Settings				Switch Action	Therm-O-Disc	
	Terminal 1 & 3		Terminal 1 & 2			Style	Type
	Cut-in	Cut-out	Cut-in	Cut-out			
3L03-140	140°F (60°C)	120°F (49°C)	190°F (88°C)	170°F (77°C)	SPDT	60T13	611015
3L03-190	190°F (88°C)	170°F (77°C)	140°F (60°C)	120°F (49°C)	SPDT	60T13	611014



3F05-1



3L05-1



F6-1798 (1 per pack)

**3F05 / 3L05 SERIES
ADJUSTABLE SNAP DISC FAN & LIMIT CONTROLS**

Adjustable Snap Disc Thermostat Allows You to Set the Temperature Set Point to Match Your Specific Needs which Simplifies Inventory

FEATURES

- 1/4" quick connect terminals are standard.
- Reduces inventory while providing coverage for a wide range of temperature applications.
- Replaces the majority of fixed disc thermostats now on heating equipment and various appliances.
- 2 adjustable fan control models replace 7 fixed snap disc models.
- 5 adjustable limit control models replace 10 fixed snap disc models.

SPECIFICATIONS

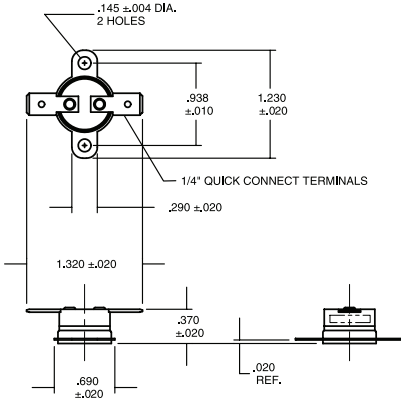
ELECTRICAL RATINGS

VAC	Resistive (Non-Inductive)	Motor Rating (Inductive)		Pilot Duty
		120 VAC	240 VAC	
120	25.0A	14.0A	7.2.0A	125 VA
240	25.0A	10.0A	60.0A	125 VA

PARTS AND ACCESSORIES

- F6-1798 Adapter plates (Order separately) — 1 per pack

Model Number	Temperature Range	Differential	Switch Action	Function	Accessories	Therm-O-Disc	
						Style	Type
3F05-1	90 to 130°F	20°F	SPST	Fan Controls (Close on Rise)	Includes thermostat and tab-to-screw terminals	74T12	310708
3F05-2	140 to 180°F	20°F	SPST			74T12	310709
3L05-1	135 to 175°F	40°F	SPST	Limit Controls (Open on Rise)		74T11	310710
3L05-2	175 to 215°F	40°F	SPST			74T11	310711
3L05-3	210 to 250°F	40°F	SPST			74T11	310712
3L05-10	135 to 175°F	20°F	SPST			74T11	310724
3L05-13	250 to 290°F	40°F	SPST		74T11	310730	



**3L11 / 3F11 SERIES
1/2" BIMETAL DISC THERMOSTATS**
Bimetal Disc Thermostats for Appliance and HVAC

FEATURES

- Loose ring, stainless steel mounting brackets.
- 1/4" quick connect terminations.
- Automatic reset.
- Aluminum disc cup.

SPECIFICATIONS

Single pole, single throw
Available in either open or close on temperature rise
Electrical Ratings
Resistive 15A @ 120 VAC, 10A @ 240 VAC
Inductive 3.0FLA, 12.0LRA @ 120 VAC; 1.5FLA, 6.0LRA @ 240 VAC
Pilot Duty 125 VA
Dimensions Length (1.23"), case width (1.32"), height (.37")
Weight 0.2 oz.
Agency UL Recognized File #E19279
CSA Certified File Number LR77886/LR109556
VDE Lic. 118631

Model Number	Description	Temperature °F / °C	Differential °F / °C	Therm-O-Disc Type	Therm-O-Disc Style
3L11-60	Open on rise	55 to 65 (°F), 13 to 18 (°C)	20 (°F), 12 (°C)	36T21	10842
3L11-85	Open on rise	80 to 90 (°F), 27 to 32 (°C)	15 (°F), 8 (°C)	36T21	10843
3F11-100	Close on rise	93 to 107 (°F), 34 to 42 (°C)	30 (°F), 17 (°C)	36T22	10844
3L11-110	Open on rise	105 to 115 (°F), 41 to 46 (°C)	30 (°F), 17 (°C)	36T21	10845
3L11-120	Open on rise	115 to 125 (°F), 46 to 52 (°C)	30 (°F), 17 (°C)	36T21	10846
3F11-120	Close on rise	113 to 127 (°F), 45 to 53 (°C)	30 (°F), 17 (°C)	36T22	10847
3L11-140	Open on rise	135 to 145 (°F), 57 to 63 (°C)	30 (°F), 17 (°C)	36T21	10848
3F11-140	Close on rise	133 to 147 (°F), 56 to 64 (°C)	30 (°F), 17 (°C)	36T22	10849
3L11-150	Open on rise	145 to 155 (°F), 63 to 68 (°C)	30 (°F), 17 (°C)	36T21	10850
3L11-160	Open on rise	155 to 165 (°F), 68 to 74 (°C)	30 (°F), 17 (°C)	36T21	10851
3L11-170	Open on rise	165 to 175 (°F), 74 to 79 (°C)	30 (°F), 17 (°C)	36T21	10852
3F11-170	Close on rise	162 to 178 (°F), 72 to 81 (°C)	30 (°F), 17 (°C)	36T22	10853
3L11-175	Open on rise	170 to 180 (°F), 77 to 82 (°C)	15 (°F), 8 (°C)	36T21	10854
3L11-180	Open on rise	175 to 185 (°F), 79 to 85 (°C)	30 (°F), 17 (°C)	36T21	10855
3F11-180	Close on rise	172 to 188 (°F), 78 to 87 (°C)	30 (°F), 17 (°C)	36T22	10856
3L11-190	Open on rise	185 to 195 (°F), 85 to 91 (°C)	30 (°F), 17 (°C)	36T21	10857
3L11-210	Open on rise	204 to 216 (°F), 96 to 102 (°C)	30 (°F), 17 (°C)	36T21	10858
3L11-220	Open on rise	214 to 226 (°F), 101 to 108 (°C)	30 (°F), 17 (°C)	36T21	10859
3F11-225	Close on rise	217 to 232 (°F), 103 to 111 (°C)	30 (°F), 17 (°C)	36T22	10860
3L11-230	Open on rise	224 to 236 (°F), 107 to 113 (°C)	30 (°F), 17 (°C)	36T21	10861
3F11-240	Close on rise	229 to 251 (°F), 109 to 122 (°C)	100 (°F), 56 (°C)	36T22	10862
3L11-250	Open on rise	224 to 256 (°F), 118 to 124 (°C)	30 (°F), 17 (°C)	36T21	10863
3L11-325	Open on rise	315 to 335 (°F), 157 to 169 (°C)	50 (°F), 28 (°C)	36T21	10864



3L12 SERIES 1/2" DISC MANUAL RESET ROLLOUT LIMIT CONTROLS

Manual Reset Flame Rollout Limit Switches Designed for Safety in Gas Fired Furnaces, Unit Heater and Roof-Top Units

FEATURES

- Loose ring, stainless steel mounting brackets.
- 1/4" quick connect terminations. 90° orientation to mounting holes.
- Manual reset.
- Stainless steel disc cup (A1 disc cup for 3L12-301).

SPECIFICATIONS

Single pole, single throw
Open on temperature rise
Electrical Ratings

Resistive 15A @ 120 VAC, 10A @ 240 VAC
Inductive 3.0 FLA, 12.0 LRA @ 120 VAC; 1.5 FLA, 6.0LRA @ 240 VAC
Pilot Duty 125 VA

Dimensions

3L12-301 Length (1.18"), case width (.81"), height (.83")
Others Length (1.70"), case width (.81"), height (.83")

Weight 0.2 oz.

Agency UL Recognized File #E19279
CSA Certified File Number LR77886/LR109556
VDE Lic. 118631

NEW SERIES!

Model Number	Fixed Temperature Settings		Switch	Therm-O-Disc	
	Cut-in	Cut-out	Action	Style	Type
3L12-130	Manual Reset	130	Open on Rise	36TX16	611863
3L12-135		135	Open on Rise	36TX16	611864
3L12-220		220	Open on Rise	36TX16	611865
3L12-230		230	Open on Rise	36TX16	611866
3L12-240		240	Open on Rise	36TX16	611867
3L12-250		250	Open on Rise	36TX16	611868
3L12-260		260	Open on Rise	36TX16	611869
3L12-300		300	Open on Rise	36TX16	611870
3L12-350		350	Open on Rise	36TX16	611871
3L12-301*		300	Open on Rise	36TX16	611971

*Specifically designed for ICP part #1013102

