



**HIGH-EFFICIENCY  
CAST IRON BOILER**

# WGO

**APPLICATIONS INCLUDE:**

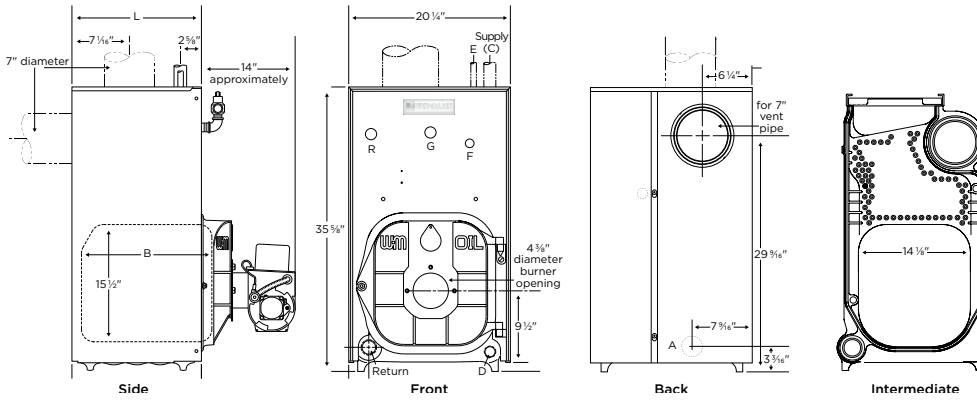
- Residential
- Light Commercial
- Multiple Boilers
- Indirect-fired Water Heating
- Radiant Heating

\*ENERGY STAR<sup>®</sup> requires a minimum of 87% AFUE, which is only achieved by reducing the burner rate and installing the specified optional vent damper kit. See Ratings chart on next page.



<sup>†</sup>Model Dependent

## DIMENSIONS



Tapping Location	Size (in.)	Control Tappings
A	1½	Alternative return — semi packaged & knocked down units only
G	¼	Pressure/temperature gauge
D	¾	Drain valve
F	¾	High limit/circulator control
E	½	Piping to expansion tank or automatic air vent
R	¾	Relief valve

Boiler Size	Supply C (in.)		Return (in.)	Dimensions (in.)	
	Packaged with Circulator	Semi-Packaged & Knocked-Down		B	L
WGO-2	1¼ (circulator flange)	1½	1½	10½	13 ¾
WGO-3	1¼ (circulator flange)	1½	1½	13½	16 7/8
WGO-4	1¼ (circulator flange)	1½	1½	13 5/8	16 7/8
WGO-5	1¼ (circulator flange)	1½	1½	16 7/8	20
WGO-6	1¼ (circulator flange)	1½	1½	20	23 1/8
WGO-7	not applicable	1½	1½	23 1/8	26 1/4
WGO-8	not applicable	1½	1½	26 1/4	29 3/8
WGO-9	not applicable	1½	1½	29 3/8	32 1/2

## RATINGS

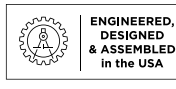
ENERGY STAR®	Model <sup>4</sup>	Burner Input Rating		AHRI Certified Ratings			Draft Loss Through Boiler (in. w/c)	Minimum Chimney Size			Approx. Shipping Weight (Lbs.)
		GPH <sup>5</sup>	MBH <sup>5</sup>	Heating Capacity (MBH) <sup>6,7</sup>	Net Ratings (MBH) <sup>7,8</sup>	AFUE		Rectangular (in.)	Round (in.)	Height (Ft.)	
	WGO-2	0.70	98	86	75	86.4	.010	8x8	6	15	540
*	WGO-2RD	0.70	98	86	75	87.0	.010				540
	WGO-3R	0.80	112	98	85	86.2	.020				595
*	WGO-3RD	0.80	112	98	85	87.0	.010				595
	WGO-3D	0.95	133	115	100	86.0	.020				595
	WGO-4R	1.00	140	122	106	86.2	.010				645
*	WGO-4RD	1.00	140	123	107	87.0	.010				645
	WGO-4D	1.20	168	146	127	86.0	.010				645
	WGO-5R	1.20	168	147	128	86.1	.015				760
*	WGO-5RD	1.20	168	148	129	87.0	.015				760
	WGO-5D	1.45	203	176	153	86.0	.015	760			
	WGO-6R	1.40	196	171	149	86.1	.015	860			
*	WGO-6RD	1.40	196	173	150	87.0	.015	860			
	WGO-6D	1.75	245	213	185	86.0	.015	860			
	WGO-7R	1.60	224	196	170	86.0	.015	930			
*	WGO-7RD	1.60	224	197	171	87.0	.015	930			
	WGO-7D	2.00	280	244	212	86.0	.015	930			
	WGO-8	2.30	322	266	231	-	.025	8x12	20	1,030	
	WGO-9	2.55	357	295	257	-	.030			1,135	

Boiler order options include

Packaged boiler: Assembled block with jacket, collector hood and controls installed (order burner separately); sizes 2-6.

Semi-packaged boiler: Assembled block with jacket and collector hood installed (order burner and trim separately); sizes 2-6.

Knocked-down boiler: Assembled block, all other components are cartoned and shipped separately; all sizes.



## STANDARD EQUIPMENT:

### BOILER

- Factory tested and assembled cast iron section assembly (jacket and collector hood are not assembled on 7, 8 and 9 section blocks)
- Insulated steel jacket
- Aluminized steel flue collector hood with flue cap on top outlet (convertible to rear outlet)
- Swing-away burner mounting door
- Refractory blanket and target wall in combustion area
- Circulator (when ordered)
  - Sizes 2-4: Taco 007e
  - Sizes 5-6: Taco 007
- High limit control with circulator relay, LWCO function, and integrated service switch
- Two vent pipe brackets
- Pressure/temperature gauge
- 30 PSIG ASME relief valve (boiler sections tested for 50 PSIG working pressure)
- Drain valve
- Barometric damper
- Built-in air separator

### OPTIONAL EQUIPMENT:

- High-efficiency flame-retention oil burner (Beckett AFG, Carlin EZ or Riello). Specify 2-stage fuel unit (optional, Beckett) if required
- Vent damper kit
- Outdoor reset kit - temperature sensor (wired version part #383-500-126, wireless version part #386-701-047)
- Weil-McLain five- and ten-year homeowner protection plan
- Weil-McLain indirect-fired water heaters

### LIMITED TRANSFERABLE WARRANTY:

- Residential: 20 Years Heat Exchanger; 2 Years Parts
- Commercial: 10 Years Heat Exchanger; 1 Year Parts

<sup>4</sup>Boiler model suffixes:

R = Reduced input version—a burner nozzle change may be required, refer to the burner instructions or boiler's rating label for correct selection. No separate/additional damper kit required.

D = High input version—installation of the separate High Input Vent Damper kit (part # 381800515) is required, also a burner nozzle change may be required, refer to the burner instructions or boiler's rating label for correct selection.

RD = ENERGY STAR 87% AFUE compliant only when installed with the separate ES Vent Damper kit (part numbers 381800501 through 381800506) and at the reduced burner rate.

<sup>5</sup>No. 2 fuel oil-Commercial Standard Specification CS75-56. Heating value of oil-140,000 BTU/Gal.

<sup>6</sup>Based on standard test procedures prescribed by the United States Department of Energy.

<sup>7</sup>MBH refers to thousands of BTU per hour.

<sup>8</sup>Net AHRI ratings are based on net installed radiation adequate for the requirements of the building, including a piping and pickup allowance of 1.15-sufficient for normal conditions. Provide additional allowance only for unusual piping and pickup loads.

In the interest of continual improvement in product and performance, Weil-McLain reserves the right to change specifications without notice.