

Secondary

Job Name: \_\_\_\_\_

Date: \_\_\_\_\_

Location: \_\_\_\_\_

Approval: \_\_\_\_\_

Engineer: \_\_\_\_\_

Construction: \_\_\_\_\_

Submitted to: \_\_\_\_\_

Unit #: \_\_\_\_\_

Submitted by: \_\_\_\_\_

Drawing #: \_\_\_\_\_

Reference: \_\_\_\_\_

**General Features**

- Refrigerant Type R410A.
- Extra long piping allotment
- 5 years parts warranty

**Model Information**

Primary Branch Box.....	UTP-PU03B
Connectable Indoor Units.....	1-3
Max Combination.....	62,000 Btu/h
Minimum Combination.....	7,000 Btu/h

<b>Electrical</b> .....	208/230V AC 1ph-60Hz
Available Voltage Range.....	187/264 VAC
Minimum Circuit Ampacity.....	3 A
Max Fuse Size.....	15 A

Running Current	
Cooling.....	0.050 A
Heating.....	0.050 A
Power Use	
Cooling.....	10 W
Heating.....	10 W

**Connection Pipe**

Liquid.....	Main: 3/8" x1, Branch: 1/4" x3
Gas.....	Main: 5/8" x1, Branch: 1/2" x3

**Dimensions**

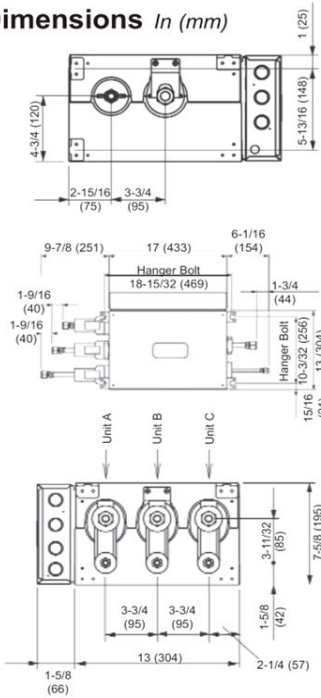
(H x W x D) in. (mm).....	7-5/8 x 17 x 14-5/8 (195x433x370)
------------------------------	-----------------------------------

**Weight**

Net.....	20 lbs. (9 kg)
Gross.....	29 lbs. (13 kg)

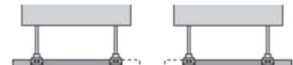


**Dimensions In (mm)**



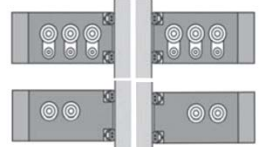
**Allowed Branch Box Mounting Direction**

**Threaded Rod Mount**



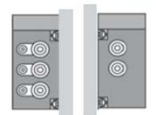
By reversing the electrical box position you can orient the inlet and outlet pipes into a left hand or right hand configuration.

**Horizontal Wall Mount**



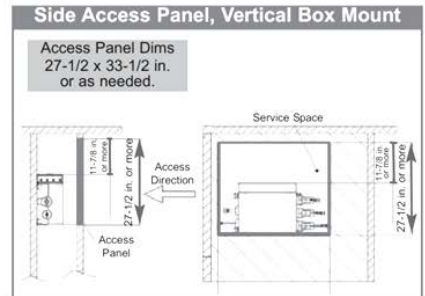
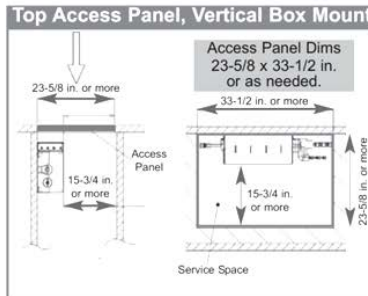
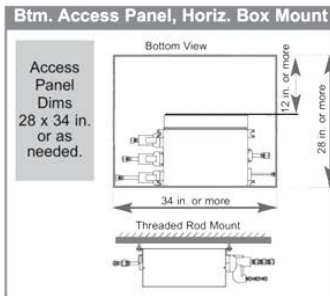
By reversing the electrical box position you can orient the inlet and outlet pipes into a left hand or right hand configuration.

**Vertical Wall Mount**



You cannot reverse the electrical box position when mounting the branch box vertically.

**Clearances**



33-1/2 in. or more