

# Sculflow® Nozzles & COM A Hose Swivels

Dependable Performance for Countless Deliveries

**Setting Standards in Safety and Dependability since 1936.**



## The Most Popular Delivery Nozzles in the World with Increased Hose Flexibility and Freedom of Movement

- The leading choice for light product, high volume deliveries.
- Reduced pressure drop allows for faster pumping speeds.
- Prevent closing shock to prolong truck equipment life.
- Feature leak-proof filling and no-drip operation.
- Original ball valve design and deadbolt locking handle.
- Advanced ball bearing design allows for easy rotation at all operating pressures.
- Teflon high recovery seal and shielded bearings for optimum field performance.
- No nipple required to attach hose with male style swivels.
- Lightweight aluminum and zinc construction.
- Wide variety of liquid product use.

### Materials

- Aluminum body.
- Hard chrome plated brass ball valve.
- Teflon ball seat.
- Delrin ball follower.
- Aluminum and zinc swivel body.
- Teflon swivel seal.
- Viton seals.

### Options

- 5 P.S.I. anti-drip valve.
  - Without swivel.
  - Sightglass.
  - Special chemicals.
- Consult Scully for part numbers.*

### Flow Rates

- Used for deliveries up to 100 G.P.M.

Inlet Style	Inlet Thread	Outlet Thread	Part #
FEMALE	1 1/4"	UNIFIL Nozzle Connector	05062
FEMALE	1 1/4"	1 1/4" Female NPT	05066
FEMALE	1 1/4"	1 1/2" Female NPT	05070
FEMALE	1 1/2"	UNIFIL Nozzle Connector	05064
FEMALE	1 1/2"	1 1/4" Female NPT	05068
FEMALE	1 1/2"	1 1/2" Female NPT	05072
MALE	1 1/4"	UNIFIL Nozzle Connector	05100
MALE	1 1/2"	UNIFIL Nozzle Connector	05106

*All units listed have 3 P.S.I. anti-drip valves, call for 5 P.S.I. part numbers. All units listed include swivels.*

**Note:** 1 1/4" nozzles fit 1 1/4" hoses. 1 1/2" nozzles fit 1 3/8" hoses.

## Sculflow® Nozzle Tightfill Hose Swivels

### Increased Hose Flexibility and Freedom of Movement

- Advanced ball bearing design allows for easy rotation at all operating pressures.
- Teflon high recovery seal and shielded bearings for optimum field performance.
- No nipple required to attach hose with male style swivels.
- Lightweight aluminum and zinc construction.
- Wide variety of liquid product use.



Inlet Style	Inlet Pipe Size	Male Outlet Thread	Part #
FEMALE	1 1/4"	COM-A	05815
FEMALE	1 1/2"	COM-A	05816
MALE	1 1/4"	COM-A	05865
MALE	1 1/2"	COM-A	05868

*COM-A outlet thread screws directly into the Sculflow Nozzle body only*

# Sculflow® Nozzle Replacement Parts

Only genuine Scully replacement parts will ensure proper operation and prevent liabilities associated with spills.

Description	Part #
Sight Glass - <b>photo A</b>	05421
Nozzle Connector- <b>photo B</b>	04346
O-Rings for Nozzle Connector (Qty.3)- <b>photo C</b>	04318
Anti-Drip Valve, 3 P.S.I. (Qty.5)- <b>photo D</b>	11502
Kit Handle & Latch Assembly (Qty.5)- <b>photo E</b>	11603
Nozzle Rebuild Kit- <b>photo F</b>	05416
Handle Upgrade Kit- <b>photo G</b>	11604
Seal Kit, no swivel parts- <b>photo H</b>	05415
Seal kit, to repair two swivels for Sculflow Nozzle- <b>photo I</b>	05859

**Note:** Latch Replacement parts for Sculflow Standard and Com Nozzles pre 1981 are available. Contact Scully for details.



05421  
Sight Glass- **A**



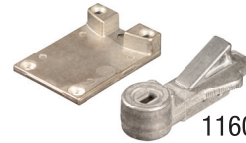
04346  
Nozzle Connector- **B**



04318  
O-Ring Package  
Nozzle Connector- **C**  
(Qty.3)



11502  
Anti-Drip Valve- **D**  
(Qty.5)



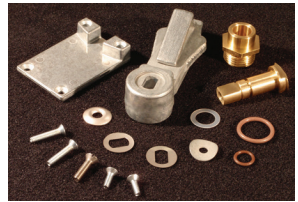
11603  
Handle & Latch  
Assembly Kit- **E**  
(Qty.5)

## 05416 Nozzle Rebuild Kit- **F**



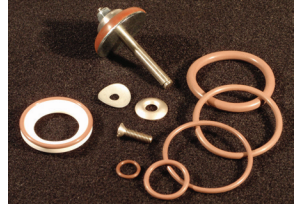
- Self Locking Screw
- Control Rod Washer
- Zinc Plated Screw (4)
- Bushing
- Control Rod Shim
- Plated Ball
- Retainer
- 11603-Handle & Latch Assembly Kit**
- Curved Washer
- Control Rod Viton O Ring
- Viton O Ring (6 Sizes)
- Seat
- Thrust Washer
- Wave Washer
- 11502 Complete Anti-Drip Valve Assembly**

## 11604 Handle Upgrade Kit- **G**



- Control Rod Washer
- Curved Washer
- Control Rod Shim
- Viton O Ring (2 Sizes)
- Screw-Self Locking
- Control Rod Viton O Ring
- Bushing
- Zinc Plated Screw (4)
- 11603-Handle & Latch Assembly Kit**

## 05415 Nozzle Seal Kit- **H**



- Self Locking Screw
- Control Rod Washer
- Curved Washer
- E Ring
- Poppet & Shaft
- Seat
- Viton O Ring (6 Sizes)

## 05859 Seal Kit, Swivels for Sculflow Nozzle- **I**



- Viton O Ring
- Felt Washer
- Radial-Bearing Assembly
- Large Bearing Washer
- Thrust Bearing
- Small Bearing Washer
- Retaining Ring

Copyright © 2015 Scully Signal Company. Dynacheck, Dynamic Self-Checking, Dynamic Self-Testing, Faylsafe, Golden Gallon, IntelliCheck, Intellitrol, Mark IV, Sculclamp, Sculflow, Sculmatic, Twis-Lok, Unifil, Ventafil, Ventalarm, V.I.P. and Whistler are registered trademarks of Scully Signal Company. All Rights Reserved. Specifications are subject to change without notice.

00000 Rev A  
February 2015



**Scully Signal Company**  
70 Industrial Way,  
Wilmington, MA 01887-3479, USA  
Tel: 800 272 8559 / 617 692 8600  
email: sales@scully.com

**Scully Systems Europe NV**  
Eksterveldlaan 31a  
2820 Bonheiden / Belgium  
Tel: +32 (0) 15 56 00 70  
email: info@scully.be

**Scully UK Ltd**  
Meridian House, Unit 33,  
37 Road One Winsford Industrial Estate,  
Winsford Cheshire CW7 3QG / UK  
Tel: +44 (0) 1606 553805  
email: sales@scullyuk.com

