

REPLACEMENT PARTS

Supersedes: SEE BELOW

e 530.18-RP2.16Y (498)

SUPERSEDES: 530.18-RP2.16Y (796), ERRATA 1 (697) PAGE 7,
ERRATA 2 (697) PAGE 11.

1 of 16

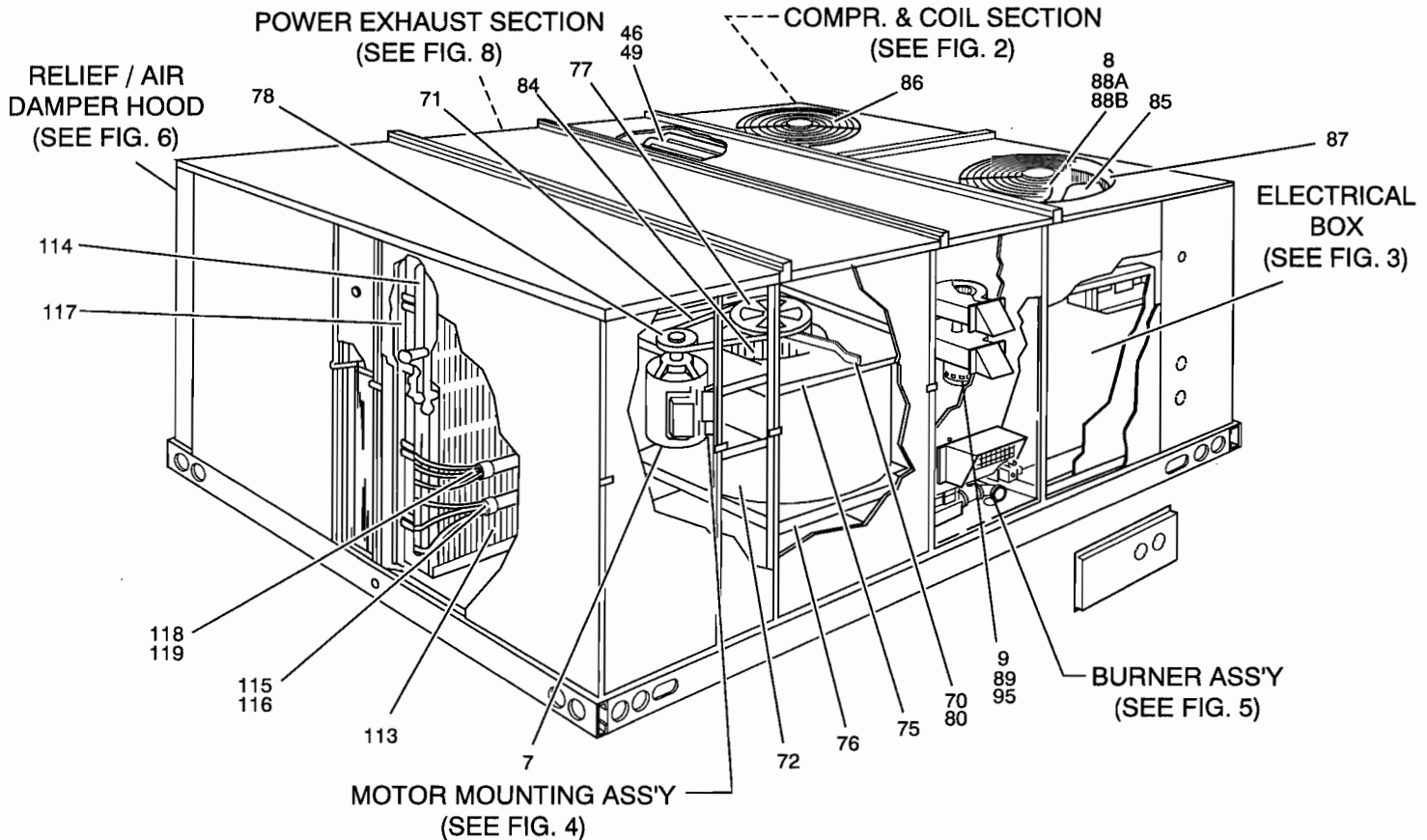


FIG. 1 – SINGLE PACKAGE GAS / ELECTRIC UNIT

COMPRESSOR

FIG	ITEM	UNIT STYLE	DESCRIPTION	D2CG240N24025 (6-BURNER)	D2CG240N24046 (6-BURNER)	D2CG240N24058 (6-BURNER)
2	(1)		COMPRESSOR, DUAL HERMETIC (2-REQ'D)	015-02052-001	015-02053-001	015-02054-001
2	2		ISOLATOR, COMPRESSOR (12-REQ'D)	028-12342-700	028-12342-700	028-12342-700
2	3		SCREW, 5/16-18 HEX WASHER HD. W/SLEEVE	021-16047-700	021-16047-700	021-16047-700
	4		SPACE FOR FUTURE PART ADDITIONS			
	5		SPACE FOR FUTURE PART ADDITIONS			
	6		SPACE FOR FUTURE PART ADDITIONS			

MOTORS

1	(7)		MOTOR, BLOWER (7.5HP)	024-24123-003	024-24123-003	024-24123-004
1	(8)		MOTOR, FAN (2-REQ'D)	024-24121-701	024-24121-701	024-24121-702
1	(9)	A-C	MOTOR, VENTOR (1-REQ'D)	024-25005-701	024-25005-702	024-25005-702
1	(9)	D, E	MOTOR, VENTOR (1-REQ'D)	024-25005-701	024-25005-004	024-25005-003
1	(9)	F	MOTOR, VENTOR (1-REQ'D)	---	---	024-25005-004

* NOT SHOWN

Major components and suggested stocking items are shown with item number in parenthesis "()".
Items with UNIT STYLES not shown are unaffected by style changes.

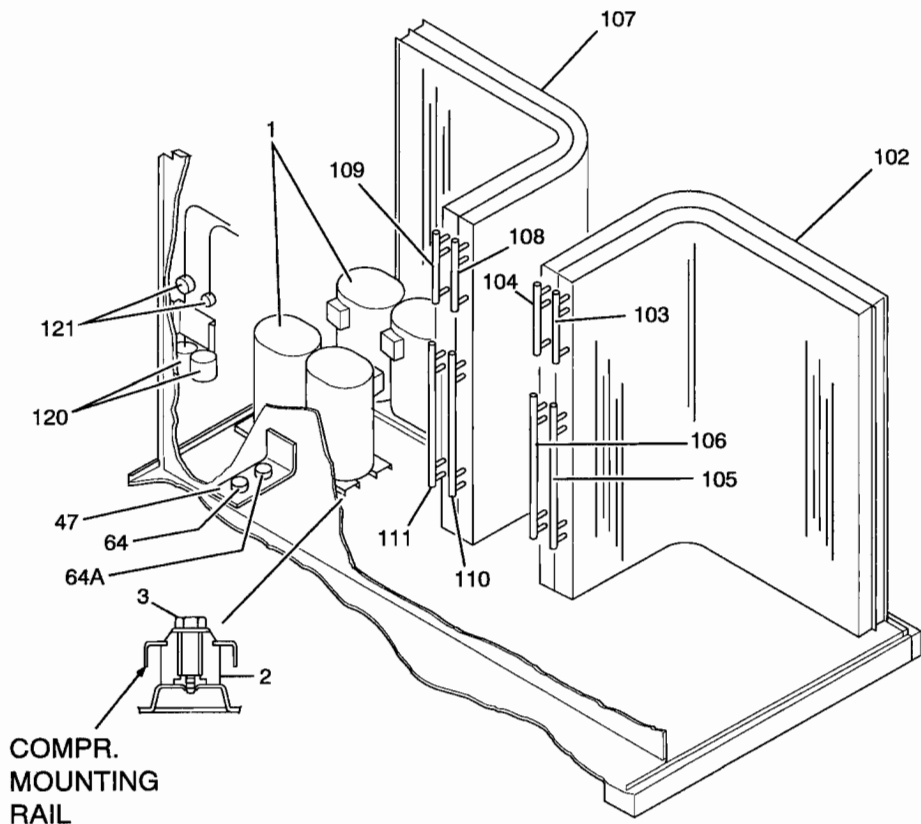


FIG. 2 - COMPRESSOR & COIL SECTION

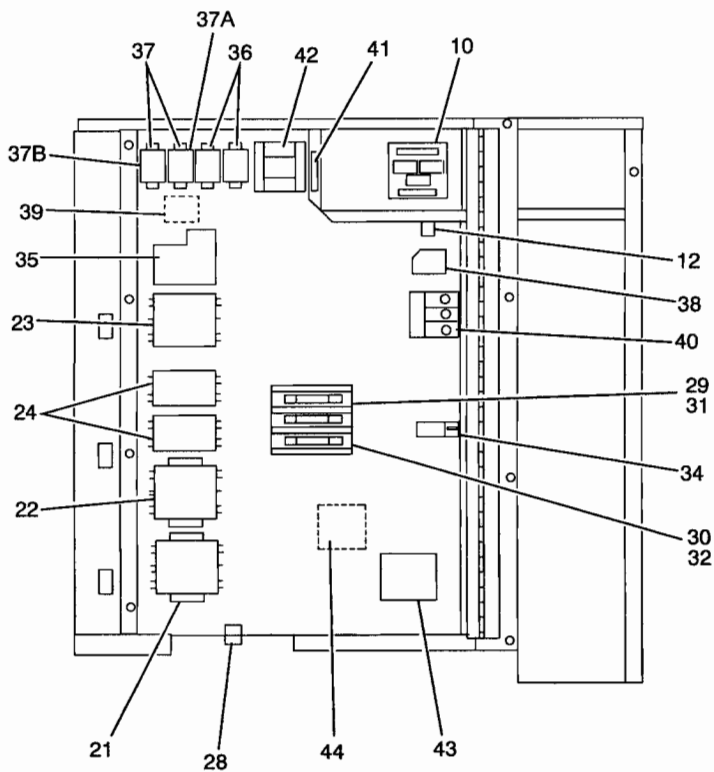
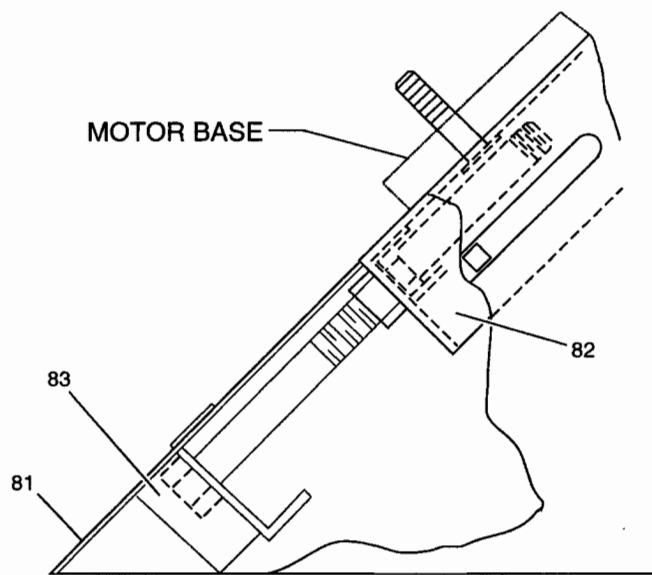


FIG. 3 - ELECTRICAL BOX



**MOTOR MOUNTING / BELT TENSING ASSEMBLY
FIG. 4**

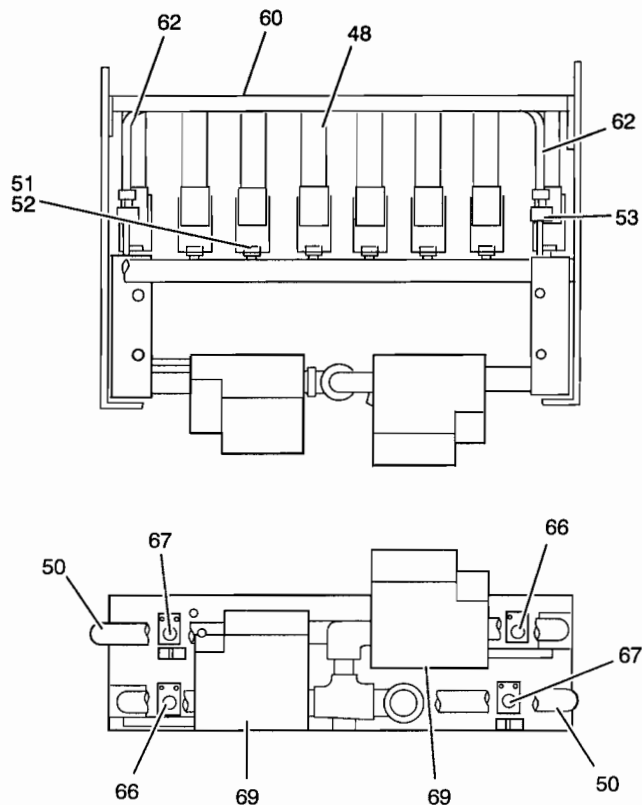


FIG. 5 - BURNER ASSEMBLY

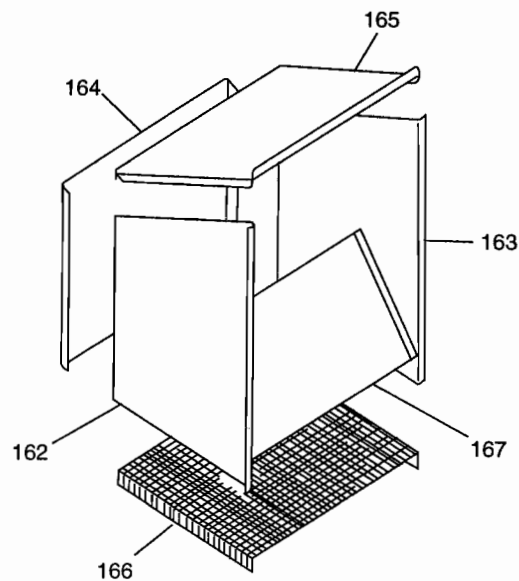


FIG. 6 - DAMPER HOOD (161)

ELECTRICAL

FIG	ITEM	UNIT STYLE	DESCRIPTION	D2CG240N24025 (6-BURNER)	D2CG240N24046 (6-BURNER)	D2CG240N24058 (6-BURNER)
3	10		BOARD, CIRCUIT RELAY	031-00652-700	031-00652-700	031-00652-700
*	11	A-C	BOOT, RUBBER CAPACITOR	---	028-04133-000	028-04133-000
*	11	D	BOOT, RUBBER CAPACITOR	---	OMIT	028-04133-000
*	11	E	BOOT, RUBBER CAPACITOR	---	OMIT	OMIT
*	11	F	BOOT, RUBBER CAPACITOR	---	---	OMIT
3	12		CIRCUIT BREAKER [CB]	024-24055-000	024-24055-000	024-24055-000
*	13		CONNECTOR, CAP (6-CIRCUIT) (S9)	025-20963-000	025-20963-000	025-20963-000
*	14		CONNECTOR, PLUG (6-CIRCUIT) (P9)	025-19670-000	025-19670-000	025-19670-000
*	15		CONNECTOR, PLUG (9-CIRCUIT) (P7)	025-21192-000	025-21192-000	025-21192-000
	16		SPACE FOR FUTURE PART ADDITIONS			
	17		SPACE FOR FUTURE PART ADDITIONS			
	18		SPACE FOR FUTURE PART ADDITIONS			
*	19		CONTACT, SOCKET (P7) (1)	025-19673-000	025-19673-000	025-19673-000
*	20		CONTACT, SPLIT PIN (BOX OF 50) (P6) (1)	025-20919-700	025-20919-700	025-20919-700
3	(21)		CONTACTOR, ELEC. [1M]	024-25846-700	024-25842-700	024-25842-700
3	(22)		CONTACTOR, ELEC. [2M]	024-25846-700	024-25842-700	024-25842-700
3	(23)		CONTACTOR, ELEC. [3M]	024-25842-700	024-25842-700	024-25842-700
3	(24)		CONTACTOR, ELEC. [4M,5M]	024-25838-700	024-25838-700	024-25838-700
*	(25)		CONTROL, PRESSURE (2-REQ'D) [HP1&2]	025-17620-014	025-17620-014	025-17620-014
*	(26)		CONTROL, PRESSURE (2-REQ'D) [LP1&2]	025-30249-700	025-30249-700	025-30249-700
*	(27)		CONTROL, LOW EVAP. TEMP. (2) [FS1&2]	025-27727-002	025-27727-002	025-27727-002
3	28		CONTROL, TEMP. [TLA]	025-27723-001	025-27723-001	025-27723-001
3	29		FUSEHOLDER, CRTG. 250V	025-18283-000	---	---
3	30		FUSE, DUAL 250V/35A (3-REQ'D) [7-9FU]	025-15491-000	---	---

* NOT SHOWN

- (1) USE HAND TOOL #044-02999-700 WHEN APPLYING CONTACT.
- (2) USE HEAT CONDUCTIVE COMPOUND 013-02250-000 WHEN APPLYING CONTROL TO SUCTION LINE.

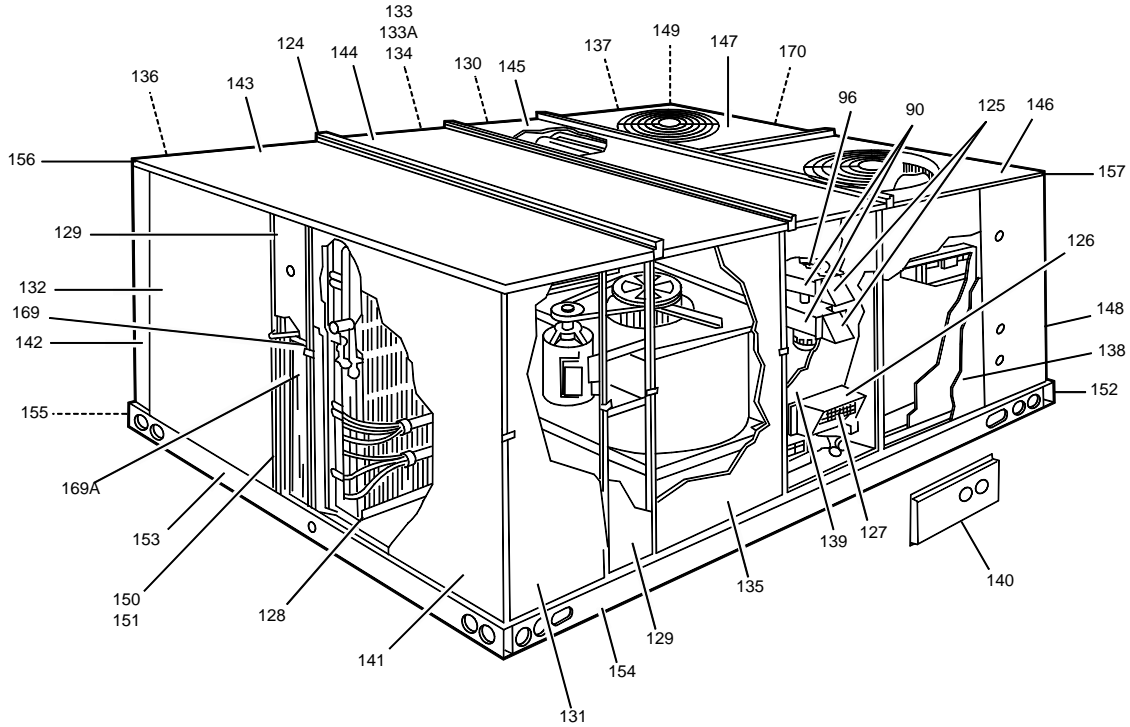


FIG. 7 - SINGLE PACKAGE GAS/ELECTRIC UNIT

ELECTRICAL (Cont.)

FIG	ITEM	UNIT STYLE	DESCRIPTION	D2CG240N24025 (6-BURNER)	D2CG240N24046 (6-BURNER)	D2CG240N24058 (6-BURNER)
3	31		FUSEHOLDER, CRTG. 600V	---	025-18284-000	025-18284-000
3	32		FUSE, DUAL 600V/15A (3-REQ'D)	[7-9FU]	025-05741-000	---
3	32		FUSE, DUAL 600V/12A (3-REQ'D)	[7-9FU]	---	025-06079-000
*	33	A-C	LABEL, WIRING (REFERENCE)	035-12392-000	035-12392-000	035-12399-000
*	33	D	LABEL, WIRING (REFERENCE)	035-13834-000	035-13828-000	035-12399-000
*	33	E	LABEL, WIRING (REFERENCE)	035-14778-000	035-14778-000	035-12399-000
*	33	F	LABEL, WIRING (REFERENCE)	---	---	035-14771-000
3	34		LUG, GROUND	025-19282-000	025-19282-000	025-19282-000
3	(35)		RELAY, BLOWER OVERLOAD	[BOR]	024-24127-004	024-24127-002
3	(36)		RELAY, CONTROL	[RY1,2]	024-21678-000	024-21678-000
3	(37)	A-C	RELAY, CONTROL	[RW1,2]	024-19138-001	024-19138-001
3	(37A)	D, E	RELAY, CONTROL	[RW1]	024-25910-000	024-25911-000
3	(37A)	F	RELAY, CONTROL	[RW1]	---	024-25911-000
3	(37B)	D, E	RELAY, CONTROL	[RW2]	024-21678-000	024-21678-000
3	(37B)	F	RELAY, CONTROL	[RW2]	---	024-21678-000
3	(38)	A-D	RELAY, HEAT SEQUENCE	[TDR]	373-20602-000	373-20602-000
3	(38)	E	RELAY, HEAT SEQUENCE	[ETD]	024-26088-000	024-26088-000
3	(38)	F	RELAY, HEAT SEQUENCE	[ETD]	---	024-26088-000
3	39		RELAY, CONTROL (POWER EXHAUST)	[EX2]	024-21292-700	024-21292-700
3	40		TERMINAL BLOCK 3-POLE	[2TB]	025-20710-000	025-20710-000
3	41		TERMINAL BLOCK 3-POLE	[4TB]	025-27755-000	025-27755-000
3	(42)		TRANSFORMER	[1T]	025-25973-000	025-25974-000
3	43		TRANSFORMER	[2T]	---	025-17636-000
3	44		TRANSFORMER (POWER EXHAUST)	[3T]	---	025-15798-700
	45		SPACE FOR FUTURE PART ADDITIONS			

NOTES: *Not Shown

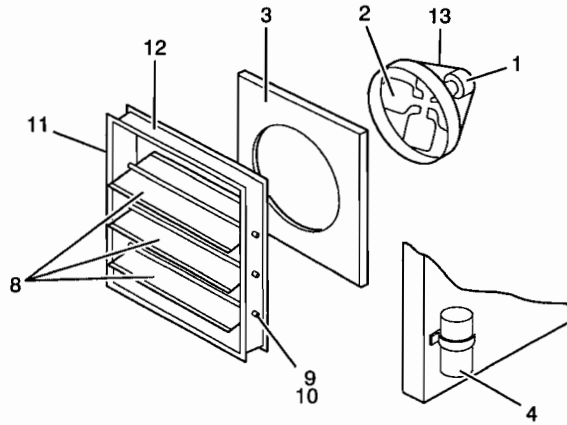


FIG. 8 - POWER EXHAUST SECTION - SEE PG. 12

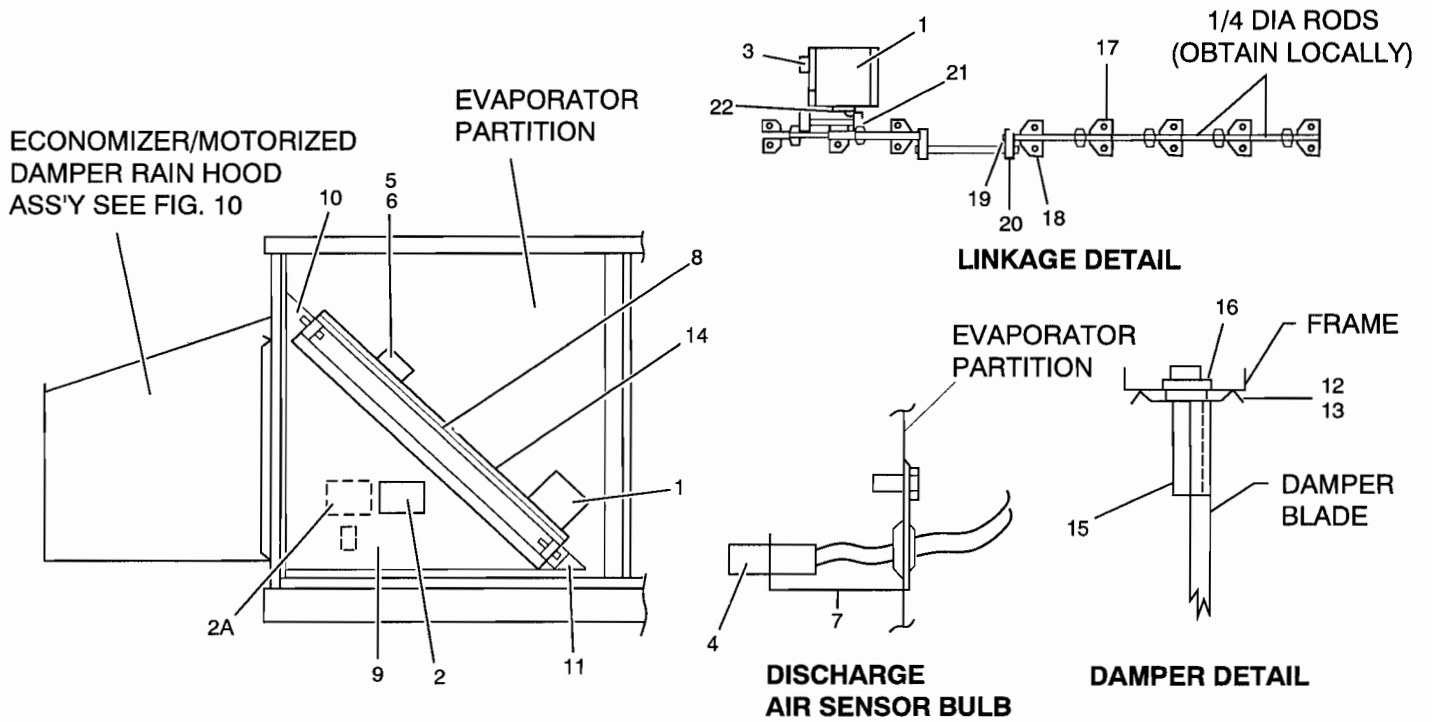


FIG. 9 - ELECTRONIC ENTHALPY ECONOMIZER / MOTORIZED DAMPER - SEE PG. 12

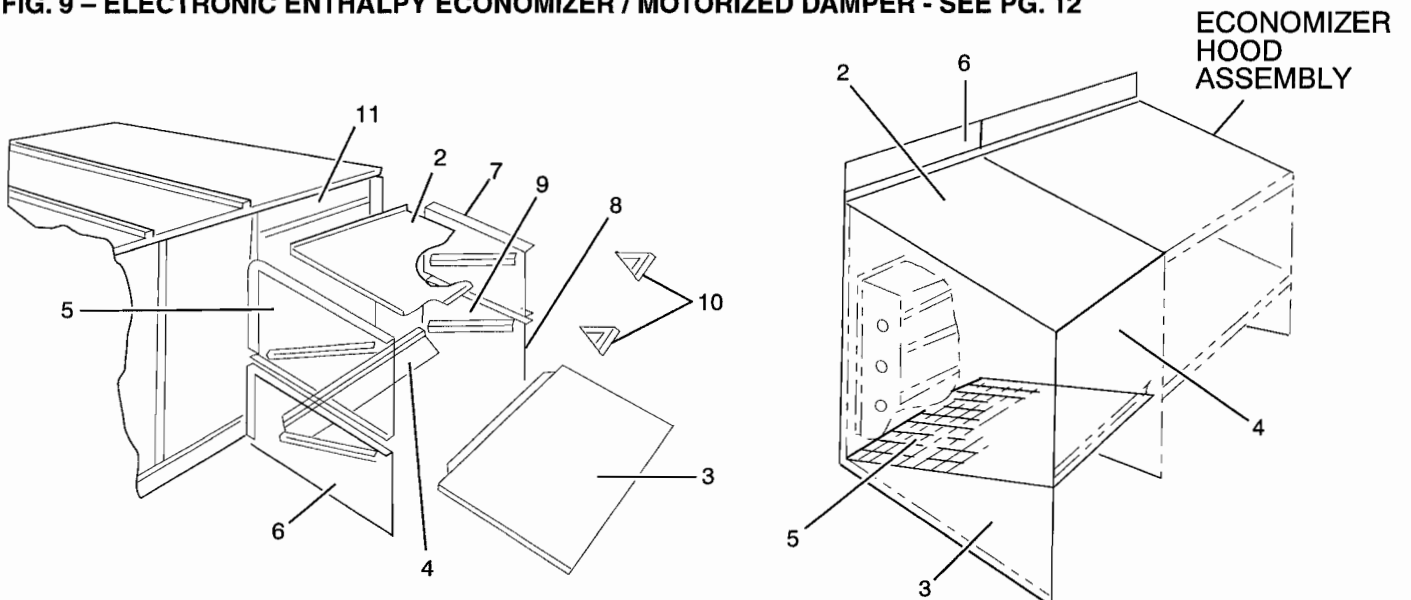


FIG. 10 - ECONOMIZER / MOTORIZED DAMPER RAIN HOOD ASSEMBLY (ITEM 1) - SEE PG. 13

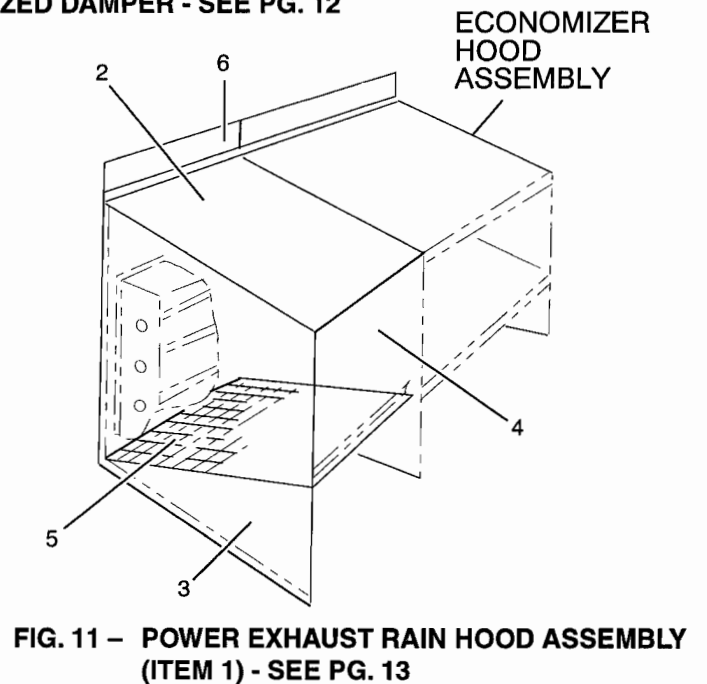


FIG. 11 - POWER EXHAUST RAIN HOOD ASSEMBLY (ITEM 1) - SEE PG. 13

GAS HEAT SECTION

FIG	ITEM	UNIT STYLE	DESCRIPTION	D2CG240N24025 (6-BURNER)	D2CG240N24046 (6-BURNER)	D2CG240N24058 (6-BURNER)
1	46		BAFFLE, AIR (HEAT EXCH. TUBE) 1-PER TUBE	063-90071-000	063-90071-000	063-90071-000
2	47	A-D	BRACKET, LIMIT SWITCH (SINGLE SENSOR)	063-94987-700	063-94987-700	063-94987-700
2	47	E	BRACKET, LIMIT SWITCH (DOUBLE SENSOR)	073-18565-000	073-18565-000	---
2	47	E	BRACKET, LIMIT SWITCH (SINGLE SENSOR)	---	---	063-94987-700
2	47	F	BRACKET, LIMIT SWITCH (DOUBLE SENSOR)	---	---	073-18565-000
5	48		BURNER, GAS (6-REQ'D)	029-20286-000	029-20286-000	029-20286-000
1	49		HEAT EXCHANGER	363-93846-001	363-93846-001	363-93846-001
5	50		MANIFOLD, GAS (2-REQ'D)	029-20081-000	029-20081-000	029-20081-000
5	51		ORIFICE, GAS BURNER #30 (6-REQ'D)	029-20423-030	029-20423-030	029-20423-030
5	52		ORIFICE, GAS BURNER BLANK (2-REQ'D)	029-20423-000	029-20423-000	029-20423-000
5	53		ORIFICE, GAS PILOT #65 (2-REQ'D)	029-20422-065	029-20422-065	029-20422-065
*	54		PANEL, FRONT FLUE BOX	063-93865-700	063-93865-700	063-93865-700
*	55		PANEL, TOP FLUE BOX	063-93867-700	063-93867-700	063-93867-700
*	56		PANEL, MIDDLE FLUE BOX	063-93866-700	063-93866-700	063-93866-700
*	57		PANEL, BOTTOM & SIDES FLUE BOX	063-93849-000	063-93849-000	063-93849-000
*	58		PANEL, VESTIBULE (FRONT)	363-94871-020	363-94871-020	363-94871-020
*	59		PANEL, VESTIBULE (BOTTOM)	363-94871-100	363-94871-100	363-94871-100
5	60		SUPPORT, BURNER	063-93848-000	063-93848-000	063-93848-000
	61		SPACE FOR FUTURE PART ADDITIONS			
5	62		TUBE, CARRYOVER (2-REQ'D)	029-20404-000	029-20404-000	029-20404-000

GAS/ELECTRIC CONTROLS

*	(63)	A	CONTROL, IGNITION	[IC1&2]	025-27762-000	025-27762-000	025-27762-000
*	(63)	B, C	CONTROL, IGNITION	[IC1&2]	025-29012-000	025-29012-000	025-29012-000
*	(63)	D	CONTROL, IGNITION	[IC1&2]	025-29012-001	025-29012-001	025-29012-000
*	(63)	E	CONTROL, IGNITION	[IC1&2]	025-29012-001	025-29012-001	025-29012-001
*	(63)	F	CONTROL, IGNITION	[IC1&2]	---	---	025-29012-001
2	64	A-D	CONTROL, TEMP. LIMIT (PRIMARY)	[LS]	373-01911-605	373-01911-605	373-01911-605
2	64	E	CONTROL, TEMP. LIMIT (PRIMARY)	[LS]	025-26366-009	025-26366-009	025-26366-009
2	64	F	CONTROL, TEMP. LIMIT (PRIMARY)	[LS]	---	---	025-26366-009
2	64A	E	CONTROL, TEMP. LIMIT (AUX. W/MANUAL RESET)		025-32655-000	025-32655-000	---
2	64A	F	CONTROL, TEMP. LIMIT (AUX. W/MANUAL RESET)		---	---	025-32655-000
*	65		CONTROL, TEMP. (ROLLOUT)		025-27733-002	025-27733-002	025-27733-002
5	(66)		IGNITOR, SPARK (W/O TERM) (2-REQ'D)		025-27731-702	025-27731-702	025-27731-702
5	(67)		SENSOR, FLAME (W/TERM) (2-REQ'D)		025-27731-701	025-27731-701	025-27731-701
	68		SPACE FOR FUTURE PART ADDITIONS				
5	(69)		VALVE, GAS (HONEYWELL) (2-REQ'D)		025-27720-700	025-27720-700	025-27720-700

AIR MOVING (BLOWER)

1	70	A	BEARING, BALL 3-BOLT FLANGE (2-REQ'D)		029-20401-000	029-20401-000	029-20401-000
1	70	B-E	BEARING, BALL 3-BOLT FLANGE (2-REQ'D)		029-20490-000	029-20490-000	029-20490-000
1	70	F	BEARING, BALL 4-BOLT FLANGE (2-REQ'D)		029-22145-000	029-22145-000	029-22145-000
1	71	A	BELT, FAN (BX-83)		028-12037-000	028-12037-000	028-12037-000
1	71	B-F	BELT, FAN (BX-83)		028-12080-000	028-12080-000	028-12080-000
1	72		HOUSING, BLOWER 18" W/O WHEEL		063-94675-000	063-94675-000	063-94675-000
*	73		KEY, STEEL 1/4 SQ. X 2" LG. (FIXED PULLEY)		001-07110-005	001-07110-005	001-07110-005
*	74		KEY, STEEL 1/4 SQ. X 6-3/8" LG. (WHEEL)		001-07110-004	001-07110-004	001-07110-004
1	75		PLATE, TOP 18" BLOWER		063-93868-000	063-93868-000	063-93868-000
1	76		PLATE, BTM. 18" BLOWER		063-93869-000	063-93869-000	063-93869-000
1	77		PULLEY, FIXED PITCH (BLOWER)		028-10577-000	028-10577-000	028-10577-000
1	78		PULLEY, VARIABLE PITCH (MOTOR)		028-12010-000	028-12010-000	028-12010-000
*	79		SHAFT, BLOWER		001-07116-000	001-07116-000	001-07116-000
1	80	A-E	SUPPORT, BEARING (WIREFORM)(2-REQ'D)		026-25552-000	026-25552-000	026-25552-000
1	80	F	BRACKET, BEARING		026-35494-000	026-35494-000	026-25552-000
4	81		SUPPORT, MOTOR MOUNTING		063-94674-000	063-94674-000	063-94674-000
4	82		PLATE, MOTOR MOUNTING W/4-WELD SCREWS		373-01957-000	373-01957-000	373-01957-000
4	83		BRACKET, TENSIONER (MOTOR SUPPORT)		063-94940-000	063-94940-000	063-94940-000
1	84		WHEEL, BLOWER 18"		026-25529-003	026-25529-003	026-25529-003

NOTES: * Not Shown

AIR MOVING (COND. FAN)

FIG	ITEM	UNIT STYLE	DESCRIPTION	D2CG240N24025 (6-BURNER)	D2CG240N24046 (6-BURNER)	D2CG240N24058 (6-BURNER)
1	(85)		BLADE, FAN (2-REQ'D)	026-25553-000	026-25553-000	026-25553-000
1	86		GUARD, FAN (2-REQ'D)	026-25549-000	026-25549-000	026-25549-000
1	87		ORIFICE, FAN (2-REQ'D)	063-94820-000	063-94820-000	063-94820-000
1	88A		MOUNT, FAN MOTOR (WIREFORM) (2-REQ'D)	026-25551-000	026-25551-000	026-25551-000
1	88B		CLAMP RING FOR MOTOR MOUNT (2-REQ'D)	026-25568-000	026-25568-000	026-25568-000

AIR MOVING (VENTOR)

1	89	A-C	VARISTOR (VENTOR MOTOR PROTECTOR)	---	025-30145-000	025-30145-000
1	89	D	VARISTOR (VENTOR MOTOR PROTECTOR)	---	OMIT	025-30145-000
1	89	E	VARISTOR (VENTOR MOTOR PROTECTOR)	---	OMIT	OMIT
1	89	F	VARISTOR (VENTOR MOTOR PROTECTOR)	---	---	OMIT
7	90		HOUSING, VENTOR BLOWER (2-REQ'D)	063-90041-000	063-90041-000	063-90041-000
*	91		PLATE, VENTOR ORIFICE (TOP HSG.) 2-3/16 HOLE	063-90038-014	063-90038-014	063-90038-014
*	92		PLATE, VENTOR ORIFICE (BTM. HSG.) 2-3/8 HOLE	063-90038-010	063-90038-010	063-90038-010
*	93		PLATE, VENTOR (TOP HSG.)	073-03170-000	073-03170-000	073-03170-000
*	94		PLATE, VENTOR (BOTTOM HSG.)	073-03210-000	073-03210-000	073-03210-000
1	95		SPACER, VENTOR MOTOR (4-REQ'D)	073-03169-000	073-03169-000	073-03169-000
7	96		WHEEL, VENTOR BLOWER (UPPER)	026-25530-005	026-25530-005	026-25530-005
*	97		WHEEL, VENTOR BLOWER (LOWER)	026-25530-004	026-25530-004	026-25530-004
	98		SPACE FOR FUTURE PART ADDITIONS			

REFRIGERANT

*	99		CAP, SEAL 1/4 FLARE	023-11018-000	023-11018-000	023-11018-000
*	100		CORE, VALVE	022-02475-000	022-02475-000	022-02475-000
*	101		STEM, VALVE (1/4 OD TUBE)	022-08017-000	022-08017-000	022-08017-000
2	102		COIL, CONDENSER (FRONT FORMED) (3)	373-06295-700	373-06295-700	373-06295-700
2	102		COIL, COND. (FORMED/TECHNICOATED) (3)	373-06295-800	373-06295-800	373-06295-800
2	103		HEADER, COND. (FRONT COIL / TOP FRONT)	373-06295-730	373-06295-730	373-06295-730
2	104		HEADER, COND. (FRONT COIL / TOP REAR)	373-06295-740	373-06295-740	373-06295-740
2	105		HEADER, COND. (FRONT COIL / BTM. FRONT)	373-06295-730	373-06295-730	373-06295-730
2	106		HEADER, COND. (FRONT COIL / BTM. REAR)	373-06295-740	373-06295-740	373-06295-740
2	107		COIL, CONDENSER (REAR FORMED) (4)	373-06296-700	373-06296-700	373-06296-700
2	107		COIL, COND. (FORMED/TECHNICOATED) (4)	373-06296-800	373-06296-800	373-06296-800
2	108		HEADER, COND. (REAR COIL / TOP FRONT)	373-06296-740	373-06296-740	373-06296-740
2	109		HEADER, COND. (REAR COIL / TOP REAR)	373-06296-730	373-06296-730	373-06296-730
2	110		HEADER, COND. (REAR COIL / BTM. FRONT)	373-06296-750	373-06296-750	373-06296-750
2	111		HEADER, COND. (REAR COIL / BTM. REAR)	373-06296-730	373-06296-730	373-06296-730
*	112		DISTRIBUTOR BODY (2-REQ'D)	026-23209-000	026-23209-000	026-23209-000
1	113		COIL, EVAP. (COIL CONTAINS SYS. 1 & 2) (5)	373-06228-700	373-06228-700	373-06228-700
1	114		HEADER, EVAP. (SYS. 1)	373-06228-720	373-06228-720	373-06228-720
1	115		VALVE, TXV (SYS. 1)	022-06852-001	022-06852-001	022-06852-001
1	116		VALVE, DISTR. ASS'Y. (INCL. 7 TUBES) (SYS. 1)	026-32679-703	026-32679-703	026-32679-703
1	117		HEADER, EVAP. (SYS. 2)	373-06228-730	373-06228-730	373-06228-730
1	118		VALVE, TXV (SYS. 2)	022-06852-001	022-06852-001	022-06852-001
1	119		VALVE, DISTR. ASS'Y. (INCL. 7 TUBES) (SYS. 2)	026-32679-703	026-32679-703	026-32679-703
2	120		FILTER, DRIER (2-REQ'D)	026-14777-712	026-14777-712	026-14777-712
2	121		INDICATOR, MOISTURE LIQUID (2-REQ'D)	026-12525-700	026-12525-700	026-12525-700
	122		SPACE FOR FUTURE PART ADDITIONS			
	123		SPACE FOR FUTURE PART ADDITIONS			

FABRICATED PARTS

7	124		CAP, ROOF (3-REQ'D)	063-94959-700	063-94959-700	063-94959-700
7	125		HOOD, FLUE OUTLET W/SCREEN (2-REQ'D)	363-93686-700	363-93686-700	363-93686-700
7	126	A-C	HOOD, AIR INLET W / O SCREEN	063-94817-000	063-94817-000	063-94817-000
7	126	D	HOOD, AIR INLET W / O SCREEN	073-16451-000	073-16451-000	063-94817-000
7	126	E	HOOD, AIR INLET W / O SCREEN	073-16451-000	073-16451-000	073-16451-000
7	126	F	HOOD, AIR INLET W / O SCREEN	---	---	073-16451-000

* NOT SHOWN

(3) INCLUDES HEADERS.

(5) INCLUDES HEADERS & TWO DISTRIBUTOR BODIES.

(5) INCLUDES HEADERS, TXV'S, DISTRIBUTOR VALVES & TUBES.

**FABRICATED
PARTS (Cont.)**

FIG	ITEM	UNIT STYLE	DESCRIPTION	D2CG240N24025 (6-BURNER)	D2CG240N24046 (6-BURNER)	D2CG240N24058 (6-BURNER)
7	127	A-C	SCREEN, AIR INLET	026-31407-000	026-31407-000	026-31407-000
7	127	D	SCREEN, AIR INLET	026-34563-000	026-34563-000	026-31407-000
7	127	E	SCREEN, AIR INLET	026-34563-000	026-34563-000	026-34563-000
7	127	F	SCREEN, AIR INLET	---	---	026-34563-000
7	128		PAN, DRAIN	373-03203-002	373-03203-002	373-03203-002
7	129		PANEL, ACCESS FILTER & MOTOR (2-REQ'D)	373-06317-180	373-06317-180	373-06317-180
7	130		PANEL, ACCESS HEAT SECT. (REAR)	373-06317-190	373-06317-190	373-06317-190
7	131		PANEL, ACCESS (LEFT FRONT)	373-06317-170	373-06317-170	373-06317-170
7	132		PANEL, ACCESS FRESH AIR (EVAP. END)	373-06317-210	373-06317-210	373-06317-210
7	133		PANEL, ACCESS (DAMPER MTG.) W/O ECONO.	363-94829-031	363-94829-031	363-94829-031
7	133A		COVER, DAMPER OPENING	363-94829-032	363-94829-032	363-94829-032
7	134		PANEL, ACCESS (ECONO. MTG.) W/ECONO.	373-06317-210	373-06317-210	373-06317-210
7	135		PANEL, ACCESS (BLOWER)	373-06317-210	373-06317-210	373-06317-210
7	136		PANEL, ACCESS (DAMPER)	373-06317-220	373-06317-220	373-06317-220
7	137	A-C	PANEL, ACCESS (COMPRESSOR)	063-93795-000	063-93795-000	063-93795-000
7	137	D	PANEL, ACCESS (COMPRESSOR)	063-93795-001	063-93795-001	063-93795-000
7	137	E	PANEL, ACCESS (COMPRESSOR)	063-93795-001	063-93795-001	063-93795-001
7	137	F	PANEL, ACCESS (COMPRESSOR)	---	---	063-93795-001
7	138	A-C	PANEL, ACCESS (CONTROLS)	063-93794-000	063-93794-000	063-93794-000
7	138	D	PANEL, ACCESS (CONTROLS)	063-93794-001	063-93794-001	063-93794-000
7	138	E	PANEL, ACCESS (CONTROLS)	063-93794-001	063-93794-001	063-93794-001
7	138	F	PANEL, ACCESS (CONTROLS)	---	---	063-93794-001
7	139	A-C	PANEL, ACCESS (HEAT SECT. FRONT, UPPER)	063-94770-000	063-94770-000	063-94770-000
7	139	D	PANEL, ACCESS (HEAT SECT. FRONT, UPPER)	073-16452-004	073-16452-004	063-94770-000
7	139	E	PANEL, ACCESS (HEAT SECT. FRONT, UPPER)	073-16452-004	073-16452-004	073-16452-004
7	139	F	PANEL, ACCESS (HEAT SECT. FRONT, UPPER)	---	---	073-16452-004
7	140		PANEL, ACCESS (HEAT SECT. FRONT, LOWER)	063-94769-000	063-94769-000	063-94769-000
7	141		PANEL, CORNER (EVAP. SIDE FRONT)	373-06317-230	373-06317-230	373-06317-230
7	142		PANEL, CORNER (REAR L/H)	373-06317-200	373-06317-200	373-06317-200
7	143		PANEL, TOP (EVAP. L/H)	373-11172-140	373-11172-140	373-11172-140
7	144		PANEL, TOP (EVAP. R/H)	373-06317-150	373-06317-150	373-06317-150
7	145		PANEL, TOP (HEAT SECTION)	373-06317-160	373-06317-160	373-06317-160
7	146		PANEL, TOP (CONDENSER FRONT)	063-93750-000	063-93750-000	063-93750-000
7	147		PANEL, TOP (CONDENSER REAR)	063-93751-000	063-93751-000	063-93751-000
7	148		POST, CORNER (R/H FRONT)	063-93805-000	063-93805-000	063-93805-000
7	149		POST, CORNER (R/H REAR)	063-93786-000	063-93786-000	063-93786-000
7	150		POST, FRAME (INNER) (8-REQ'D)	073-10391-700	073-10391-700	073-10391-700
7	151		POST, FRAME (OUTER) (8-REQ'D)	063-94671-000	063-94671-000	063-94671-000
7	152		RAIL, BASE (COND. END)	073-10757-700	073-10757-700	073-10757-700
7	153		RAIL, BASE (EVAP. END)	073-10807-700	073-10807-700	073-10807-700
7	154		RAIL, BASE (FRONT)	073-01937-700	073-01937-700	073-01937-700
7	155		RAIL, BASE (REAR)	073-01938-700	073-01938-700	073-01938-700
7	156		RAIL, TOP (EVAP. END)	063-94943-700	063-94943-700	063-94943-700
7	157		RAIL, TOP (FRONT & REAR) (2-REQ'D)	063-94942-700	063-94942-700	063-94942-700
	158		SPACE FOR FUTURE PART ADDITIONS			
	159		SPACE FOR FUTURE PART ADDITIONS			
	160		SPACE FOR FUTURE PART ADDITIONS			

DAMPER HOOD

6	161		HOOD, DAMPER ASS'Y COMPLETE	373-02274-701	373-02274-701	373-02274-701
6	162		PANEL, DAMPER (RIGHT SIDE)	073-02266-700	073-02266-700	073-02266-700
6	163		PANEL, DAMPER (LEFT SIDE)	073-02267-700	073-02267-700	073-02267-700
6	164		PANEL, DAMPER (FRONT)	073-02268-700	073-02268-700	073-02268-700
6	165		PANEL, DAMPER (TOP)	073-02269-700	073-02269-700	073-02269-700
6	166		SCREEN, DAMPER (BLANK)	026-31409-700	026-31409-700	026-31409-700
6	167		BAFFLE, DAMPER	073-02272-700	073-02272-700	073-02272-700

* NOT SHOWN

MISC.

FIG	ITEM	UNIT STYLE	DESCRIPTION	D2CG240N24025 (6-BURNER)	D2CG240N24046 (6-BURNER)	D2CG240N24058 (6-BURNER)
*	168		CATCH, MAGNETIC (2-REQ'D)	029-15650-000	029-15650-000	029-15650-000
7	169		FILTER, AIR (4-REQ'D)	(2x16x20)	(2x16x20)	(2x16x20)
7	169A		FILTER, AIR (4-REQ'D)	(2x16x25)	(2x16x25)	(2x16x25)
7	170		GUARD, COIL (2-REQ'D)	026-31432-702	026-31432-702	026-31432-702
*	171		GROMMET, PVC RED (1-3/8 ID, USE IN 2-3/8 HOLE)	028-04698-000	028-04698-000	028-04698-000
*	172		ELBOW, 90 DEG.	023-01643-000	023-01643-000	023-01643-000

ADDITIONAL MODELS

COMPRESSOR

FIG	ITEM	UNIT STYLE	DESCRIPTION	D2CG240N32025 (8-BURNER)	D2CG240N32046 (8-BURNER)	D2CG240N32058 (8-BURNER)
2	(1)		COMPRESSOR, DUAL HERMETIC (2-REQ'D)	015-02052-001	015-02053-001	015-02054-001
2	2		ISOLATOR, COMPRESSOR (12-REQ'D)	028-12342-700	028-12342-700	028-12342-700
2	3		SCREW, 5/16-18 HEX WASHER HD. W/SLEEVE	021-16047-700	021-16047-700	021-16047-700
	4		SPACE FOR FUTURE PART ADDITIONS			
	5		SPACE FOR FUTURE PART ADDITIONS			
	6		SPACE FOR FUTURE PART ADDITIONS			

MOTORS

1	(7)		MOTOR, BLOWER (7.5HP)	024-24123-003	024-24123-003	024-24123-004
1	(8)		MOTOR, FAN (2-REQ'D)	024-24121-701	024-24121-701	024-24121-702
1	(9)	A-C	MOTOR, VENTOR (1-REQ'D)	024-25005-701	024-25005-702	024-25005-702
1	(9)	D, E	MOTOR, VENTOR (1-REQ'D)	024-25005-701	024-25005-004	024-25005-003
1	(9)	F	MOTOR, VENTOR (1-REQ'D)	---	---	024-25005-004

ELECTRICAL

3	10		BOARD, CIRCUIT RELAY	031-00652-700	031-00652-700	031-00652-700
*	11	A-C	BOOT, RUBBER CAPACITOR	---	028-04133-000	028-04133-000
*	11	D	BOOT, RUBBER CAPACITOR	---	OMIT	028-04133-000
*	11	E	BOOT, RUBBER CAPACITOR	---	OMIT	OMIT
*	11	F	BOOT, RUBBER CAPACITOR	---	---	OMIT
3	12		CIRCUIT BREAKER [CB]	024-24055-000	024-24055-000	024-24055-000
*	13		CONNECTOR, CAP (6-CIRCUIT) (S9)	025-20963-000	025-20963-000	025-20963-000
*	14		CONNECTOR, PLUG (6-CIRCUIT) (P9)	025-19670-000	025-19670-000	025-19670-000
*	15		CONNECTOR, PLUG (9-CIRCUIT) (P7)	025-21192-000	025-21192-000	025-21192-000
	16		SPACE FOR FUTURE PART ADDITIONS			
	17		SPACE FOR FUTURE PART ADDITIONS			
	18		SPACE FOR FUTURE PART ADDITIONS			
*	19		CONTACT, SOCKET (P7) (1)	025-19673-000	025-19673-000	025-19673-000
*	20		CONTACT, SPLIT PIN (BOX OF 50) (P6) (1)	025-20919-700	025-20919-700	025-20919-700
3	(21)		CONTACTOR, ELEC. [1M]	024-25846-700	024-25842-700	024-25842-700
3	(22)		CONTACTOR, ELEC. [2M]	024-25846-700	024-25842-700	024-25842-700
3	(23)		CONTACTOR, ELEC. [3M]	024-25842-700	024-25842-700	024-25842-700
3	(24)		CONTACTOR, ELEC. [4M,5M]	024-25838-700	024-25838-700	024-25838-700
*	(25)		CONTROL, PRESSURE (2-REQ'D) [HP1&2]	025-17620-014	025-17620-014	025-17620-014
*	(26)		CONTROL, PRESSURE (2-REQ'D) [LP1&2]	025-30249-700	025-30249-700	025-30249-700
*	(27)		CONTROL, LOW EVAP. TEMP. (2) [FS1&2]	025-27727-002	025-27727-002	025-27727-002
3	28		CONTROL, TEMP. [TLA]	025-27723-001	025-27723-001	025-27723-001
3	29		FUSEHOLDER, CRTG. 250V	025-18283-000	---	---
3	30		FUSE, DUAL 250V/35A (3-REQ'D) [7-9FU]	025-15491-000	---	---
3	31		FUSEHOLDER, CRTG. 600V	---	025-18284-000	025-18284-000
3	32		FUSE, DUAL 600V/15A (3-REQ'D) [7-9FU]	---	025-05741-000	---
3	32		FUSE, DUAL 600V/12A (3-REQ'D) [7-9FU]	---	---	025-06079-000

* NOT SHOWN

- (1) USE HAND TOOL #044-02999-700 WHEN APPLYING CONTACT.
 (2) USE HEAT CONDUCTIVE COMPOUND 013-02250-000 WHEN APPLYING CONTROL TO SUCTION LINE.

ELECTRICAL (Cont.)

FIG	ITEM	UNIT STYLE	DESCRIPTION	D2CG240N32025 (8-BURNER)	D2CG240N32046 (8-BURNER)	D2CG240N32058 (8-BURNER)
*	33	A-C	LABEL, WIRING (REFERENCE)	035-12392-000	035-12392-000	035-12399-000
*	33	D	LABEL, WIRING (REFERENCE)	035-13834-000	035-13828-000	035-12399-000
*	33	E	LABEL, WIRING (REFERENCE)	035-14778-000	035-14778-000	035-12399-000
*	33	F	LABEL, WIRING (REFERENCE)	---	---	035-14771-000
3	34		LUG, GROUND	025-19282-000	025-19282-000	025-19282-000
3	(35)		RELAY, BLOWER OVERLOAD [BOR]	024-24127-004	024-24127-002	024-24127-001
3	(36)		RELAY, CONTROL [RY1,2]	024-21678-000	024-21678-000	024-21678-000
3	(37)	A-C	RELAY, CONTROL [RW1,2]	024-19138-001	024-19138-001	024-19138-001
3	(37A)	D, E	RELAY, CONTROL [RW1]	024-25910-000	024-25911-000	024-25911-000
3	(37A)	F	RELAY, CONTROL [RW1]	---	---	024-25911-000
3	(37B)	D, E	RELAY, CONTROL [RW2]	024-21678-000	024-21678-000	024-21678-000
3	(37B)	F	RELAY, CONTROL [RW2]	---	---	024-21678-000
3	(38)	A-D	RELAY, HEAT SEQUENCE [TDR]	373-20602-000	373-20602-000	373-20602-000
3	(38)	E	RELAY, HEAT SEQUENCE [ETD]	024-26088-000	024-26088-000	024-19082-740
3	(38)	F	RELAY, HEAT SEQUENCE [ETD]	---	---	024-26088-000
3	39		RELAY, CONTROL (POWER EXHAUST) [EX2]	024-21292-700	024-21292-700	024-21292-700
3	40		TERMINAL BLOCK 3-POLE [2TB]	025-20710-000	025-20710-000	025-20710-000
3	41		TERMINAL BLOCK 3-POLE [4TB]	025-27755-000	025-27755-000	025-27755-000
3	(42)		TRANSFORMER [1T]	025-25973-000	025-25974-000	025-27729-000
3	43		TRANSFORMER [2T]	---	---	025-17636-000
3	44		TRANSFORMER (POWER EXHAUST) [3T]	---	---	025-15798-700
	45		SPACE FOR FUTURE PART ADDITIONS			

GAS HEAT SECTION

1	46		BAFFLE, AIR (HEAT EXCH. TUBE) 1-PER TUBE	063-90071-000	063-90071-000	063-90071-000
2	47	A-D	BRACKET, LIMIT SWITCH (SINGLE SENSOR)	063-94987-700	063-94987-700	063-94987-700
2	47	E	BRACKET, LIMIT SWITCH (DOUBLE SENSOR)	073-18565-000	073-18565-000	---
2	47	E	BRACKET, LIMIT SWITCH (SINGLE SENSOR)	---	---	063-94987-700
2	47	F	BRACKET, LIMIT SWITCH (DOUBLE SENSOR)	---	---	073-18565-000
5	48		BURNER, GAS (8-REQ'D)	029-20286-000	029-20286-000	029-20286-000
1	49		HEAT EXCHANGER	363-93846-002	363-93846-002	363-93846-002
5	50		MANIFOLD, GAS (2-REQ'D)	029-20081-000	029-20081-000	029-20081-000
5	51		ORIFICE, GAS BURNER #30 (8-REQ'D)	029-20423-030	029-20423-030	029-20423-030
	52		SPACE FOR FUTURE PART ADDITIONS			
5	53		ORIFICE, GAS PILOT #58 (2-REQ'D)	029-20422-058	029-20422-058	029-20422-058
*	54		PANEL, FRONT FLUE BOX	063-93865-700	063-93865-700	063-93865-700
*	55		PANEL, TOP FLUE BOX	063-93867-700	063-93867-700	063-93867-700
*	56		PANEL, MIDDLE FLUE BOX	063-93866-700	063-93866-700	063-93866-700
*	57		PANEL, BOTTOM & SIDES FLUE BOX	063-93849-000	063-93849-000	063-93849-000
*	58		PANEL, VESTIBULE (FRONT)	363-94871-020	363-94871-020	363-94871-020
*	59		PANEL, VESTIBULE (BOTTOM)	363-94871-100	363-94871-100	363-94871-100
5	60		SUPPORT, BURNER	063-93848-000	063-93848-000	063-93848-000
	61		SPACE FOR FUTURE PART ADDITIONS			
5	62		TUBE, CARRYOVER (2-REQ'D)	029-20099-000	029-20099-000	029-20099-000

GAS/ELECTRIC CONTROLS

*	(63)	A	CONTROL, IGNITION [IC1&2]	025-27762-000	025-27762-000	025-27762-000
*	(63)	B, C	CONTROL, IGNITION [IC1&2]	025-29012-000	025-29012-000	025-29012-000
*	(63)	D	CONTROL, IGNITION [IC1&2]	025-29012-001	025-29012-001	025-29012-000
*	(63)	E	CONTROL, IGNITION [IC1&2]	025-29012-001	025-29012-001	025-29012-001
*	(63)	F	CONTROL, IGNITION [IC1&2]	---	---	025-29012-001
2	64	A-D	CONTROL, TEMP. LIMIT (PRIMARY) [LS]	373-01911-605	373-01911-605	373-01911-605
2	64	E	CONTROL, TEMP. LIMIT (PRIMARY) [LS]	025-26366-009	025-26366-009	025-26366-009
2	64	F	CONTROL, TEMP. LIMIT (PRIMARY) [LS]	---	---	025-26366-009
2	64A	E	CONTROL, TEMP. LIMIT (AUX. W/MANUAL RESET)	025-32655-000	025-32655-000	---
2	64A	F	CONTROL, TEMP. LIMIT (AUX. W/MANUAL RESET)	---	---	025-32655-000

NOTES: * Not Shown

GAS/ELECTRIC CONTROLS (Cont.)

FIG	ITEM	UNIT STYLE	DESCRIPTION	D2CG240N32025 8-BURNER	D2CG240N32046 8-BURNER	D2CG240N32058 8-BURNER
*	65		CONTROL, TEMP. (ROLLOUT)	025-27733-002	025-27733-002	025-27733-002
5	(66)		IGNITOR, SPARK (W/O TERM) (2-REQ'D)	025-27731-702	025-27731-702	025-27731-702
5	(67)		SENSOR, FLAME (W/TERM) (2-REQ'D)	025-27731-701	025-27731-701	025-27731-701
	68		SPACE FOR FUTURE PART ADDITIONS			
5	(69)		VALVE, GAS (HONEYWELL) (2-REQ'D)	025-27720-700	025-27720-700	025-27720-700

AIR MOVING (BLOWER)

1	70	A	BEARING, BALL 3-BOLT FLANGE (2-REQ'D)	029-20401-000	029-20401-000	029-20401-000
1	70	B-E	BEARING, BALL 3-BOLT FLANGE (2-REQ'D)	029-20490-000	029-20490-000	029-20490-000
1	70	F	BEARING, BALL 4-BOLT FLANGE (2-REQ'D)	029-22145-000	029-22145-000	029-22145-000
1	71	A	BELT, FAN (BX-83)	028-12037-000	028-12037-000	028-12037-000
1	71	B-E	BELT, FAN (BX-83)	028-12080-000	028-12080-000	028-12080-000
1	71	F	BELT, FAN (BX-83)	---	---	028-12080-000
1	72		HOUSING, BLOWER 18" W/O WHEEL	063-94675-000	063-94675-000	063-94675-000
*	73		KEY, STEEL 1/4 SQ. X 2" LG. (FIXED PULLEY)	001-07110-005	001-07110-005	001-07110-005
*	74		KEY, STEEL 1/4 SQ. X 6-3/8" LG. (WHEEL)	001-07110-004	001-07110-004	001-07110-004
1	75		PLATE, TOP 18" BLOWER	063-93868-000	063-93868-000	063-93868-000
1	76		PLATE, BTM. 18" BLOWER	063-93869-000	063-93869-000	063-93869-000
1	77		PULLEY, FIXED PITCH (BLOWER)	028-10577-000	028-10577-000	028-10577-000
1	78		PULLEY, VARIABLE PITCH (MOTOR)	028-12010-000	028-12010-000	028-12010-000
*	79		SHAFT, BLOWER	001-07116-000	001-07116-000	001-07116-000
1	80	A-E	SUPPORT, BEARING (WIREFORM) (2-REQ'D)	026-25552-000	026-25552-000	026-25552-000
1	80	F	BRACKET, BEARING	026-35494-000	026-35494-000	026-25552-000
4	81		SUPPORT, MOTOR MOUNTING	063-94674-000	063-94674-000	063-94674-000
4	82		PLATE, MOTOR MOUNTING W/4-WELD SCREWS	373-01957-000	373-01957-000	373-01957-000
4	83		BRACKET, TENSIONER (MOTOR SUPPORT)	063-94940-000	063-94940-000	063-94940-000
1	84		WHEEL, BLOWER 18"	026-25529-003	026-25529-003	026-25529-003

AIRMOVING (COND.FAN)

1	(85)		BLADE, FAN (2-REQ'D)	026-25553-000	026-25553-000	026-25553-000
1	86		GUARD, FAN (2-REQ'D)	026-25549-000	026-25549-000	026-25549-000
1	87		ORIFICE, FAN (2-REQ'D)	063-94820-000	063-94820-000	063-94820-000
1	88A		MOUNT, FAN MOTOR (WIREFORM) (2-REQ'D)	026-25551-000	026-25551-000	026-25551-000
1	88B		CLAMP RING FOR MOTOR MOUNT (2-REQ'D)	026-25568-000	026-25568-000	026-25568-000

AIR MOVING (VENTOR)

1	89	A-C	VARISTOR (VENTOR MOTOR PROTECTOR)	---	025-30145-000	025-30145-000
1	89	D	VARISTOR (VENTOR MOTOR PROTECTOR)	---	OMIT	025-30145-000
1	89	E	VARISTOR (VENTOR MOTOR PROTECTOR)	---	OMIT	OMIT
1	89	F	VARISTOR (VENTOR MOTOR PROTECTOR)	---	---	OMIT
7	90		HOUSING, VENTOR BLOWER (2-REQ'D)	063-90041-000	063-90041-000	063-90041-000
*	91		PLATE, VENTOR ORIFICE (TOP HSG.) 2-9/16 HOLE	063-90038-008	063-90038-008	063-90038-008
*	92		PLATE, VENTOR ORIFICE (BTM. HSG.) 2-7/16 HOLE	063-90038-009	063-90038-009	063-90038-009
*	93		PLATE, VENTOR (TOP HSG.)	073-03170-000	073-03170-000	073-03170-000
*	94		PLATE, VENTOR (BOTTOM HSG.)	073-03210-000	073-03210-000	073-03210-000
1	95		SPACER, VENTOR MOTOR (4-REQ'D)	073-03169-000	073-03169-000	073-03169-000
7	96		WHEEL, VENTOR BLOWER (UPPER)	026-25530-005	026-25530-005	026-25530-005
*	97		WHEEL, VENTOR BLOWER (LOWER)	026-25530-004	026-25530-004	026-25530-004
	98		SPACE FOR FUTURE PART ADDITIONS			

REFRIGERANT

*	99		CAP, SEAL 1/4 FLARE	023-11018-000	023-11018-000	023-11018-000
*	100		CORE, VALVE	022-02475-000	022-02475-000	022-02475-000
*	101		STEM, VALVE (1/4 OD TUBE)	022-08017-000	022-08017-000	022-08017-000
2	102		COIL, CONDENSER (FRONT FORMED) (3)	373-06295-700	373-06295-700	373-06295-700
2	102		COIL, COND. (FORMED/TECHNICOATED) (3)	373-06295-800	373-06295-800	373-06295-800
2	103		HEADER, COND. (FRONT COIL/TOP FRONT)	373-06295-730	373-06295-730	373-06295-730
2	104		HEADER, COND. (FRONT COIL/TOP REAR)	373-06295-740	373-06295-740	373-06295-740
2	105		HEADER, COND. (FRONT COIL/BTM. FRONT)	373-06295-730	373-06295-730	373-06295-730
2	106		HEADER, COND. (FRONT COIL/BTM. REAR)	373-06295-740	373-06295-740	373-06295-740

REFRIGERANT (Cont.)

FIG	ITEM	UNIT STYLE	DESCRIPTION	D2CG240N32025 (8-BURNER)	D2CG240N32046 (8-BURNER)	D2CG240N32058 (8-BURNER)
2	107		COIL, CONDENSER (REAR FORMED) (4)	373-06296-700	373-06296-700	373-06296-700
2	107		COIL, COND. (FORMED/TECHNICOATED) (4)	373-06296-800	373-06296-800	373-06296-800
2	108		HEADER, COND. (REAR COIL / TOP FRONT)	373-06296-740	373-06296-740	373-06296-740
2	109		HEADER, COND. (REAR COIL / TOP REAR)	373-06296-730	373-06296-730	373-06296-730
2	110		HEADER, COND. (REAR COIL / BTM. FRONT)	373-06296-750	373-06296-750	373-06296-750
2	111		HEADER, COND. (REAR COIL / BTM. REAR)	373-06296-730	373-06296-730	373-06296-730
*	112		DISTRIBUTOR BODY (2-REQ'D)	026-23209-000	026-23209-000	026-23209-000
1	113		COIL, EVAP. (COIL CONTAINS SYS. 1 & 2) (5)	373-06228-700	373-06228-700	373-06228-700
1	114		HEADER, EVAP. (SYS. 1)	373-06228-720	373-06228-720	373-06228-720
1	115		VALVE, TXV (SYS. 1)	022-06852-001	022-06852-001	022-06852-001
1	116		VALVE, DISTR. ASS'Y. (INCL. 7 TUBES) (SYS. 1)	026-32679-703	026-32679-703	026-32679-703
1	117		HEADER, EVAP. (SYS. 2)	373-06228-730	373-06228-730	373-06228-730
1	118		VALVE, TXV (SYS. 2)	022-06852-001	022-06852-001	022-06852-001
1	119		VALVE, DISTR. ASS'Y. (INCL. 7 TUBES) (SYS. 2)	026-32679-703	026-32679-703	026-32679-703
2	120		FILTER, DRIER (2-REQ'D)	026-14777-712	026-14777-712	026-14777-712
2	121		INDICATOR, MOISTURE LIQUID (2-REQ'D)	026-12525-700	026-12525-700	026-12525-700
	122		SPACE FOR FUTURE PART ADDITIONS			
	123		SPACE FOR FUTURE PART ADDITIONS			

FABRICATED PARTS

7	124		CAP, ROOF (3-REQ'D)	063-94959-700	063-94959-700	063-94959-700
7	125		HOOD, FLUE OUTLET W/SCREEN (2-REQ'D)	363-93686-700	363-93686-700	363-93686-700
7	126	A-C	HOOD, AIR INLET W / O SCREEN	063-94817-000	063-94817-000	063-94817-000
7	126	D	HOOD, AIR INLET W / O SCREEN	073-16451-000	073-16451-000	063-94817-000
7	126	E	HOOD, AIR INLET W / O SCREEN	073-16451-000	073-16451-000	073-16451-000
7	126	F	HOOD, AIR INLET W / O SCREEN	---	---	073-16451-000
7	127		SCREEN, AIR INLET	026-31407-000	026-31407-000	026-31407-000
7	128		PAN, DRAIN	373-03203-002	373-03203-002	373-03203-002
7	129		PANEL, ACCESS FILTER & MOTOR (2-REQ'D)	373-06317-180	373-06317-180	373-06317-180
7	130		PANEL, ACCESS HEAT SECT. (REAR)	373-06317-190	373-06317-190	373-06317-190
7	131		PANEL, ACCESS (LEFT FRONT)	373-06317-170	373-06317-170	373-06317-170
7	132		PANEL, ACCESS FRESH AIR (EVAP.END)	373-06317-210	373-06317-210	373-06317-210
7	133		PANEL, ACCESS (DAMPER MTG.) W/O ECONO.	363-94829-031	363-94829-031	363-94829-031
7	133A		COVER, DAMPER OPENING	363-94829-032	363-94829-032	363-94829-032
7	134		PANEL, ACCESS (ECONO. MTG.) W/ECONO.	373-06317-210	373-06317-210	373-06317-210
7	135		PANEL, ACCESS (BLOWER)	373-06317-210	373-06317-210	373-06317-210
7	136		PANEL, ACCESS (DAMPER)	373-06317-220	373-06317-220	373-06317-220
7	137	A-C	PANEL, ACCESS (COMPRESSOR)	063-93795-000	063-93795-000	063-93795-000
7	137	D	PANEL, ACCESS (COMPRESSOR)	063-93795-001	063-93795-001	063-93795-000
7	137	E	PANEL, ACCESS (COMPRESSOR)	063-93795-001	063-93795-001	063-93795-001
7	137	F	PANEL, ACCESS (COMPRESSOR)	---	---	063-93795-001
7	138	A-C	PANEL, ACCESS (CONTROLS)	063-93794-000	063-93794-000	063-93794-000
7	138	D	PANEL, ACCESS (CONTROLS)	063-93794-001	063-93794-001	063-93794-000
7	138	E	PANEL, ACCESS (CONTROLS)	063-93794-001	063-93794-001	063-93794-001
7	138	F	PANEL, ACCESS (CONTROLS)	---	---	063-93794-001
7	139	A-C	PANEL, ACCESS (HEAT SECT. FRONT, UPPER)	063-94770-000	063-94770-000	063-94770-000
7	139	D	PANEL, ACCESS (HEAT SECT. FRONT, UPPER)	073-16452-004	073-16452-004	063-94770-000
7	139	E	PANEL, ACCESS (HEAT SECT. FRONT, UPPER)	073-16452-004	073-16452-004	073-16452-004
7	139	F	PANEL, ACCESS (HEAT SECT. FRONT, UPPER)	---	---	073-16452-004
7	140		PANEL, ACCESS (HEAT SECT. FRONT, LOWER)	063-94769-000	063-94769-000	063-94769-000
7	141		PANEL, CORNER (EVAP. SIDE FRONT)	373-06317-230	373-06317-230	373-06317-230
7	142		PANEL, CORNER (REAR L/H)	373-06317-200	373-06317-200	373-06317-200
7	143		PANEL, TOP (EVAP. L/H)	373-11172-140	373-11172-140	373-11172-140
7	144		PANEL, TOP (EVAP. R/H)	373-06317-150	373-06317-150	373-06317-150
7	145		PANEL, TOP (HEAT SECTION)	373-06317-160	373-06317-160	373-06317-160
7	146		PANEL, TOP (CONDENSER FRONT)	063-93750-000	063-93750-000	063-93750-000
7	147		PANEL, TOP (CONDENSER REAR)	063-93751-000	063-93751-000	063-93751-000

* NOT SHOWN

(4) INCLUDES HEADERS & TWO DISTRIBUTOR BODIES.

(5) INCLUDES HEADERS, TXV'S, DISTRIBUTOR VALVES & TUBES.

**FABRICATED
PARTS (Cont.)**

FIG	ITEM	UNIT STYLE	DESCRIPTION	D2CG240N32025 (8-BURNER)	D2CG240N32046 (8-BURNER)	D2CG240N32058 (8-BURNER)
7	148		POST, CORNER (R/H FRONT)	063-93805-000	063-93805-000	063-93805-000
7	149		POST, CORNER (R/H REAR)	063-93786-000	063-93786-000	063-93786-000
7	150		POST, FRAME (INNER) (8-REQ'D)	073-10391-700	073-10391-700	073-10391-700
7	151		POST, FRAME (OUTER) (8-REQ'D)	063-94671-000	063-94671-000	063-94671-000
7	152		RAIL, BASE (COND. END)	073-10757-700	073-10757-700	073-10757-700
7	153		RAIL, BASE (EVAP. END)	073-10807-700	073-10807-700	073-10807-700
7	154		RAIL, BASE (FRONT)	073-01937-700	073-01937-700	073-01937-700
7	155		RAIL, BASE (REAR)	073-01938-700	073-01938-700	073-01938-700
7	156		RAIL, TOP (EVAP. END)	063-94943-700	063-94943-700	063-94943-700
7	157		RAIL, TOP (FRONT & REAR) (2-REQ'D)	063-94942-700	063-94942-700	063-94942-700
	158		SPACE FOR FUTURE PART ADDITIONS			
	159		SPACE FOR FUTURE PART ADDITIONS			
	160		SPACE FOR FUTURE PART ADDITIONS			

DAMPER HOOD

6	161		HOOD, DAMPER ASS'Y COMPLETE	373-02274-701	373-02274-701	373-02274-701
6	162		PANEL, DAMPER (RIGHT SIDE)	073-02266-700	073-02266-700	073-02266-700
6	163		PANEL, DAMPER (LEFT SIDE)	073-02267-700	073-02267-700	073-02267-700
6	164		PANEL, DAMPER (FRONT)	073-02268-700	073-02268-700	073-02268-700
6	165		PANEL, DAMPER (TOP)	073-02269-700	073-02269-700	073-02269-700
6	166		SCREEN, DAMPER (BLANK)	026-31409-700	026-31409-700	026-31409-700
6	167		BAFFLE, DAMPER	073-02272-700	073-02272-700	073-02272-700

MISC.

*	168		CATCH, MAGNETIC (2-REQ'D)	029-15650-000	029-15650-000	029-15650-000
7	169		FILTER, AIR (4-REQ'D)	(2x16x20)	(2x16x20)	(2x16x20)
7	169A		FILTER, AIR (4-REQ'D)	(2x16x25)	(2x16x25)	(2x16x25)
7	170		GUARD, COIL (2-REQ'D)	026-31432-702	026-31432-702	026-31432-702
*	171		GROMMET, PVC RED (1-3/8 ID, USE IN 2-3/8 HOLE)	028-04698-000	028-04698-000	028-04698-000
*	172		ELBOW, 90 DEG.	023-01643-000	023-01643-000	023-01643-000

* NOT SHOWN

POWER EXHAUST (OPTION) UNIT STYLE "A" THRU "E", "F" STYLE 58V CODE (SEE BELOW)

POWER EXHAUST (OPTION)

FIG	ITEM	UNIT STYLE	DESCRIPTION	D2CG240
8	1		MOTOR, 3/4 HP (208/230V)	024-24104-000
8	1		MOTOR, 3/4 HP (460V)	024-24131-700
8	2		FAN, BLADE	026-25558-000
8	3		DECK, FAN	073-01888-000
8	4		CAPACITOR, RUN (12.5MFD)	024-21219-700
*	5		RELAY, CONTROL (1) [EX2]	SEE ITEM 39
*	6		BOOT, RUBBER CAPACITOR	028-04133-000
	7		SPACE FOR FUTURE PART ADDITIONS	
8	8		BLADE, DAMPER (3-REQ'D)	073-01881-000
8	9		PIN, SLIDE (6-REQ'D)	029-18436-000
8	10		BUSHING, FLANGE (6-REQ'D)	029-18437-000
8	11		FRAME, DAMPER VERT. (2-REQ'D)	073-01932-000
8	12		FRAME, DAMPER HORIZ. (2-REQ'D)	073-01933-000
8	13		SUPPORT, FAN MOTOR	026-25563-000
*	14		CONNECTOR, CAP (2-CIRCUIT) PWR. EXHAUST	025-21159-000
*	15		CONNECTOR, CAP (3-CIRCUIT) PWR. EXHAUST	025-21193-000
*	16		CONNECTOR, PLUG (2-CIRCUIT) PWR. EXHAUST	025-19672-000
*	17		CONNECTOR, PLUG (3-CIRCUIT) PWR. EXHAUST	025-19671-000
*	18		TRANSFORMER (1) [3T]	SEE ITEM 44

(1) LOCATED IN MAIN CONTROL BOX.

NOTE: "<" At side of page indicates change was made in that row.

ECONOMIZER, SINGLE SENSOR UNITS - **STYLE "C" THRU "E", "F" STYLE 58V CODE (SEE MODEL #2EE04700924)**
 ECONOMIZER, DUAL SENSOR UNITS - **STYLE "C" THRU "E", "F" STYLE 58V CODE (SEE MODEL #2EE04701024)**
 MOTORIZED AIR DAMPER UNIT **STYLE "C" THRU "E", "F" STYLE 58V CODE (SEE MODEL #MD04702224)**

**ECONOMIZER, SINGLE / DUAL SENSOR UNITS (OPTION)
 MOTORIZED AIR DAMPER (OPTION)**

FIG	ITEM	UNIT STYLE	DESCRIPTION	D2CG240
9	1	A, B	MOTOR, ACTUATOR (ECONOMIZER - 25 & 46V)	025-26250-700
9	1	A, B	MOTOR, ACTUATOR (MTR. DAMPER - 25 & 46V)	025-26351-700
9	2	A, B	CONTROL, ENTHALPY (1), (3)	031-00863-000
9	2A	A, B	CONTROL, ENTHALPY (2), (3)	031-00863-000
9	3	A, B	CONTROL, LOGIC (3)	031-00862-700
9	4	A, B	SENSOR, TEMP. (3)	031-00878-003
9	5	A, B	CONTROL, RELAY (3) [EX1]	024-19138-001
9	6	A, B	CONTROL, RELAY (3) [DR]	024-24111-000
9	7	A, B	BRACKET, SENSOR TEMP. (3)	063-87678-000
9	8	A, B	BLADE, DAMPER (8-REQ'D)	063-94973-000
9	9	A, B	PARTITION, DIVIDER	073-13364-700
9	10	A, B	PLATE, PATCH (UPPER)	063-94974-700
9	11	A, B	PLATE, PATCH (LOWER)	063-94975-700
9	12	A, B	SEAL, DAMPER OUTSIDE AIR (16" LG.) (2-REQ'D)	029-20074-000
9	13	A, B	SEAL, DAMPER RETURN AIR (26" LG.) (2-REQ'D)	029-20097-700
9	14	A, B	SEAL, DAMPER BLADE (10-REQ'D)	029-20098-700
9	15	A, B	PIN, SLIDE (16-REQ'D)	029-18436-000
9	16	A, B	BUSHING, FLANGE (16-REQ'D)	029-18437-000
9	17	A, B	BRK'T, DAMPER BLADE (W/PIVOT) (5-REQ'D)	029-18448-000
9	18	A, B	BRK'T, DAMPER BLADE (W/2 PVTs) (3-REQ'D)	029-18449-000
9	19	A, B	CONNECTION, PIVOT	029-18438-000
9	20	A, B	PIVOT	029-18439-000
9	21	A, B	JOINT, BALL	029-08786-000
9	22	A, B	CRANK ARM, ACTUATOR	026-33833-700 <
*	23	A, B	PANEL, ACCESS (RETURN AIR)	SEE ITEM 134

- (1) USED ON BOTH SINGLE & DUAL SENSOR UNITS.
- (2) USED ON DUAL SENSOR UNITS ONLY.
- (3) NOT USED ON MOTORIZED AIR DAMPER OPTION.

NOTE: "<" At side of page indicates change was made in that row.

**ECONOMIZER / MOTORIZED DAMPER RAIN HOOD (ACCESSORY) UNIT STYLE "C" THRU "E", "F" STYLE
58V CODE (SEE MODEL #1EH0403)**

ECONOMIZER RAIN HOOD

FIG	ITEM	UNIT STYLE	DESCRIPTION	D2CG240
10	1	A, B	COMPLETE RAIN HOOD & HARDWARE W/FLTRS	363-94996-702
10	2	A, B	HOOD, RAIN (TOP)	073-01870-700
10	3	A, B	HOOD, RAIN (BTM W/FILTER RETAINER)	073-01871-700
10	4	A, B	HOOD, RAIN (FILTER RETAINER)	073-01872-700
10	5	A, B	HOOD, RAIN (UPPER L/H SIDE)	073-01873-700
10	6	A, B	HOOD, RAIN (LOWER L/H SIDE)	073-01875-700
10	7	A, B	HOOD, RAIN (UPPER R/H SIDE)	073-01874-700
10	8	A, B	HOOD, RAIN (LOWER R/H SIDE)	073-01876-700
10	9	A, B	ANGLE, SUPPORT FILTER (4-REQ'D)	073-01878-700
10	10	A, B	FILTER, AIR (2-REQ'D)	026-25557-700
10	11	A, B	PLATE, CLOSURE	073-01877-700

**POWER EXHAUST RAIN HOOD KIT W/DAMPER ASS'Y - UNIT STYLE "C" THRU "E", "F" STYLE
58V CODE (SEE MODEL #1RD0406)**

POWER EXHAUST RAIN HOOD

FIG	ITEM	UNIT STYLE	DESCRIPTION	D2CG240
11	1	A, B	COMPLETE POWER EXHAUST RAIN HOOD	363-94996-704
11	2	A, B	HOOD, RAIN (TOP)	073-01904-700
11	3	A, B	HOOD, RAIN (SIDE)	073-01905-000
11	4	A, B	HOOD, RAIN (FRONT)	073-01906-000
11	5	A, B	SCREEN	026-31408-000
11	6	A, B	PLATE, CLOSURE	073-01907-000

**BUILDING AUTOMATION SYSTEMS UNITS
(FOR 15 THRU 20 TON MODELS WITH OPTION CODES - WA, WB, WC, WD, WE)**

	ACCESSORY CONTROL #	WA	WB	WC	WD	WE
NOVAR "ETM-2024" CONTROL PACKAGE	2NV04700724	X				
	2NV04700824		X			X
	2NV04700924		X			X
JOHNSON "METASYS" CONTROL PACKAGE	2JM04700724	X				
	2JM04700824		X			X
	2JM04700924		X			X
YORK ISN "FDC" CONTROL PACKAGE	2YK04700724	X				
	2YK04700824		X			X
	2YK04700924		X			X

WA = CONTROL ONLY

WB = CONTROL, & ECONOMIZER

WC = CONTROL & ALT. BLWR. MTR.

WD = CONTROL, ECONO. & ALT. BLWR. MTR.

WE = CONTROL, ECONO. & PWR. EXHAUST

FOR FACTORY OR FIELD INSTALLED ACCESSORIES SEE THE FOLLOWING PARTS LIST: (D2CG240)

ACCESSORIES - ELECTRICAL

DESCRIPTION	MODEL NO.
ANTI-RECYCLE TIMER	2AC04700424
LOW AMBIENT TO 0 DEG. F (208/230V)	2LA04703425
LOW AMBIENT TO 0 DEG. F (460V)	2LA04703546
LOW AMBIENT TO 0 DEG. F (575V)	2LA04703658
ECONOMIZER, (SINGLE ENTHALPY)	SEE ECONO. SECT
ECONOMIZER, (DUAL ENTHALPY)	SEE ECONO. SECT
MOTORIZED DAMPER	SEE ECONO. SECT

ACCESSORIES - NON-ELECTRICAL

DESCRIPTION	MODEL NO.
PROPANE CONVERSION KIT	1NP0418
HIGH ALTITUDE - NATURAL GAS	1HA0409
HIGH ALTITUDE - PROPANE	1HA0408
HIGH SPEED DRIVE	1LD0417



Heating and Air Conditioning

