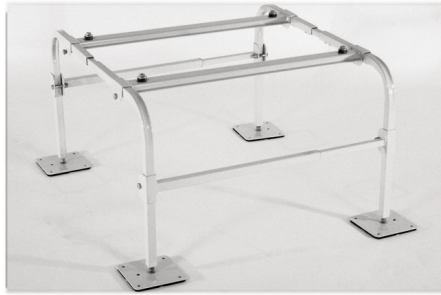


The safe & affordable install

Applicable for residential or light commercial installations



QSMS1202



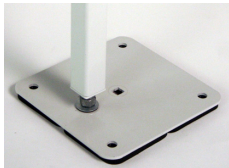
QSMS1802



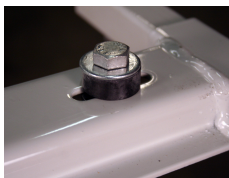
QSMS2402

A Close Up:

Dual Fan Mini Split Stand SPECS



Each foot is slotted to receive 1/4"/20 hardware which allows the stand to bolt to concrete, cement, or wood for stability & security.



4 points of anti-vibration isolation washers are provided while using four 50-derometer rubber pads on each foot.

Our Quick Sling Dual Fan Mini Split Stand is made of 14-gauge square tubing & 7 gauge steel.

Holds up to 400 lbs.

*Powder Coated.

QSMS1202 - 12" height.

QSMS1802- 18" height.

QSMS2402- 24" height.

*QSMS1802 & QSMS2402 come with an extra stability arm.

30.5" width X 38" depth.

Quick-Sling Dual Fan Mini Split Stand provides you with an elevated platform that is safe, stable and affordable. Our QSMS1202/1802 is the only way to mount your dual fan condenser to ensure its up off the ground safely, with no tip overs.