



Check your Pressure™

Gas Pressure Test Kit

This precision test kit includes a sensitive diaphragm gauge that is calibrated in inches of water column for extreme accuracy. Convenient to use without the mess of water or worry of mercury. Uniweld developed the 0-15" W.C. Gas Test Kit to accurately accommodate both natural gas at 3-4" W.C. and LP gas at 11-12" W.C.; eliminating the need for two separate kits.



Use these accurate kits to measure gas pressure across appliance manifolds. Test gas stoves, furnaces, dryers and other gas appliances.



45503
Gas Pressure
Test Kit

A new Uniweld design feature allows you to easily zero reset the gauge needle by simply twisting off the dial lens to access the adjusting screw located on the dial face.

Gauges

Part#	Description
45503	Scale: 0-35" W.C., 0-20 oz./In ²
45506	Scale: 0-15" W.C., 8.6 oz./In ²

Replacement Parts

Part#	Description
45595	Brass Fitting, Barbed x 1/8" M.P.T.
45596	Rubber Nipple
45597	Black Rubber Hose
45598	Gauge Lens
45599	Carrying Case

Uniweld Gas Pressure Test Kits Include:

- Diaphragm gauge that accurately sets manifold pressure for Natural or LP gas
- Brass fitting [barbed x 1/8" M.P.T.] and rubber tube with nipple for easy connection to manifold
- High impact protective plastic case
- Instructions.

Water Manometer

The most economical way to check/set manifold pressure in furnaces and gas appliances that use Natural or LP gas. Simply fill with water to zero and place in vertical position using the convenient magnet. Attach fitting to manifold and begin pressure test. Pressure reading is indicated by water level in small tube. Accurate pressure reading from 0-15 inches water column.



11482

Part#	Description
11482	Water Manometer Scale 0-15"



Tridicators

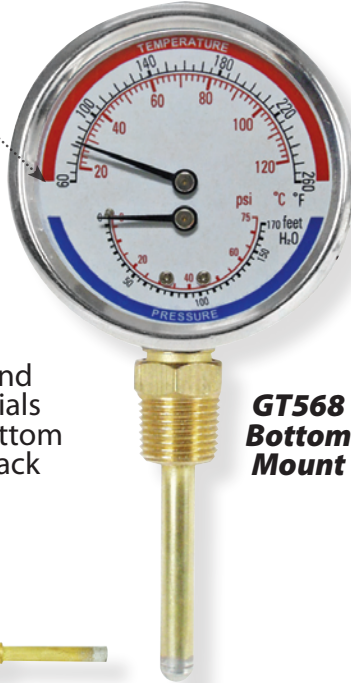


Designed primarily for hot water boiler systems. Two instruments in one...you can measure water pressure in PSI and H₂O feet, plus monitor temperature in °F and °C.

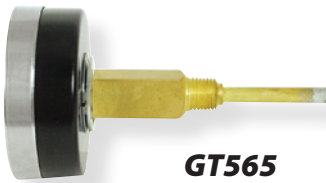
3 1/2" Tridicator has adjustable lens with indicator mark

Round Tridicator Gauges

Large 2 1/2" and 3 1/2" round dials available in bottom and center back mount.



**GT568
Bottom
Mount**



GT565

**Center Back
Mount x 2" Extension**



**GT512-2
Bottom
Mount**



**Lower
Back
Mount**

GT562-2

3 1/2" Square Tridicator Gauges

Large 3 1/2" square dial. Available in bottom mount and lower back mount.

Gauges

Part#	UPC#	Description
GT512-2	69116	3 1/2" Square Tridicator, 0-60 PSI, 0-400 kPa and 70-250 °F, 20-120 °C, 1/2" NPT B.M.
GT562-2	69117	3 1/2" Square Tridicator, 0-60 PSI, 0-400 kPa and 70-250 °F, 20-120 °C, 1/2" NPT L.B.M.
GT565	69130	2 1/2" Round Tridicator, 0-75 PSI/170 ft. H ₂ O, 60-260 °F/20-120 °C, 1/4" NPT C.B.M. x 2" Extension
GT566	69131	2 1/2" Round Tridicator, 0-75 PSI/170 ft. H ₂ O, 60-260 °F/20-120 °C, 1/4" NPT C.B.M.
GT568	69133	3 1/2" [80mm] Round Tridicator, 0-75 PSI/170 ft. H ₂ O, 60-260 °F/20-120 °C, 1/2" NPT B.M.

Pocket Bi-Metal Thermometer

- 1" Dial size with stainless steel case
- 5" Stainless steel pointed stem
- Field Calibration

69901
-40 °F to 160 °F
-40 °C to 70 °C



69902
-0 °F to 220 °F
-10 °C to 104 °C



**Protective
sheath with
pocket clip**



Uniweld Products, Inc.
Fort Lauderdale, FL 33312 U.S.A.
800/323-2111 www.uniweld.com



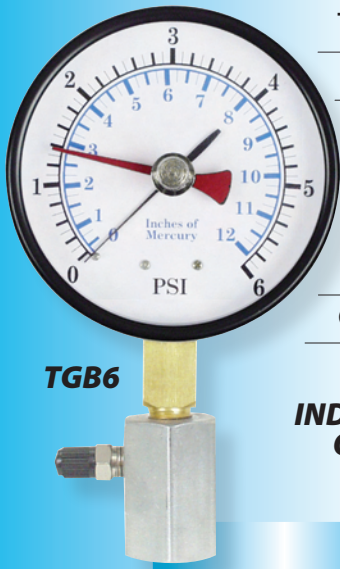


Gas Test Gauges

The choice is yours...use either a top mount or side mount for your gas test gauge needs. Use to pressure test all new installations for leaks and passing inspection codes.

Once the unit has been installed and the system pressurized, leakage will be indicated by pressure drop on the gauge.

ALL GAUGES SHIPPED INDIVIDUALLY BOXED UNLESS ORDERED WITH DISPLAY PACKAGE.

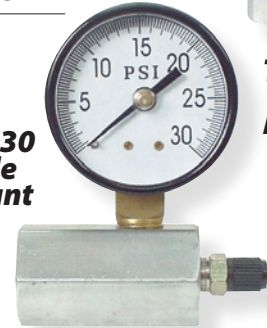


TGB6



GP210-5

TGH30 Side Mount



TGB30 Top Mount



Gauges

Gauge	Replacement Gauges	1/2" FPT		*Top Mount 3/4" FPT		1" FPT		Side Mount 3/4" FPT	
		Box	Display	Box	Display	Box	Display	Box	Display
**0-32 oz/in. ² - 55" W.C. 138 mb [2.5" [63mm]]	GD305	TGB202	41301	TGB02	41351	TGB102	41401	TGH2	41455
**0-5 psi/in. ² - 140" W.C. 360 mb [2.5" [63 mm]]	GD308	TGB205	41302	TGB5	41355	TGB105	41402	TGH5	41458
15 psi, 2" 1/10 lb. incr. Full Scale	GP210-5	TGB215	41304	TGB15	41353	TGB115	41404	TGH15	41453
30 psi, 1/4 lb. incr., 2"	GP211-5	TGB230	41305	TGB30	41354	TGB130	41405	TGH30	41456
60 psi, 1 lb. incr., 2"	GP212-5	TGB260	41306	TGB60	41356	TGB160	41406	TGH60	41459
100 psi, 1 lb. incr., 2"	GP213-5	TGB2100	41303	TGB100	41352	TGB1100	41403	TGH100	41452
**0-6 psi/1/10 lb, 0-12 in. of mercury, 4" [100mm]	GD408IP	TGB206	41307	TGB6	41357	TGB106	41407	TGH6	41460
0-15 psi/1/10 lb, 0-30 in. of mercury, 4" [100mm]	GS410-51P	TGB4215	41308	TGB415	41358	TGB4115	41408	TGH415	41461
Replacement Parts		Part#		Part#		Part#		Part#	
Top Mount Body with Air Valve		TGB2		TGB		TGB1		-	
Side Mount Body with Air Valve		-		-		-		TGH	
Air Valve with Cap [only]		TGV		TGV		TGV		TGV	

**Special sensitive 2 1/2" diaphragm gauge for more accurate low pressure reading.

*Uniweld reserves the right to use either plated steel or aluminum hex body when supplying a top mount gas test gauge assembly.

Water Test Gauges

Part#	Description
TGW300	Water test gauge with 3/4" female hose connection, 2 1/2" gauge, 300 PSI
TGW300DP	Water test gauge with 3/4" female hose connection, 2 1/2" gauge, 300 PSI Drag Pointer
TGW160	Water Test gauge with 3/4" female hose connection, 2 1/2" gauge, 160 PSI

Replacement Parts and Gauges	Description
TGW	3/4" FHT x 3/4" female NPT connection only
GS316-5	2 1/2", 300 PSI, 12 o'clock dial
GS316-5DP	2 1/2", 300 PSI, 12 o'clock dial, Drag Pointer



TGW300DP



Utility Gauges *Plastic and Steel Cased*



1/4" NPT • BM
2" DIAMETER BLACK STEEL CASE



1/8" NPT • CBM
1 1/2" DIAMETER BLACK PLASTIC CASE



1/8" NPT • CBM
1 1/2" DIAMETER BLACK STEEL CASE



1/4" NPT • BM
2 1/2" DIAMETER BLACK STEEL CASE



RHT - Right Hand Thread
LHT - Left Hand Thread
Not for Oxygen service



Gauges

Versatile, accurate and durable, these general purpose utility gauges are suitable for use on pressure media that are non-corrosive to brass or bronze. They are fitted with either bottom mount [BM] or center back mount [CBM] connections and are available in black plastic or black steel cases.

Pressure Range	1 1/2" Diameter				2" Diameter				2 1/2" Diameter	
	Black Steel Case		Black Plastic Case		Black Steel Case		Black Plastic Case		Black Steel Case	
	1/8" BM	1/8" CBM	1/8" BM	1/8" CBM	1/4" BM	1/4" CBM	1/4" BM	1/4" CBM	1/4" BM	1/4" CBM
	Part#	Part#	Part#	Part#	Part#	Part#	Part#	Part#	Part#	Part#
Hg PSI										
30" Hg+	GS100	GS150	GP100	GP150	GS200	GS250	GP200	GP250	GS300	GS350
30" Hg	GS108	GS158	-	-	GS208	GS258	-	-	GS308	GS358
30" - 15	GS101	GS151	-	-	GS201	GS251	-	-	GS301	GS351
30" - 30	GS102	GS152	-	-	GS202	GS252	-	-	GS302	GS352
30" - 60	-	-	-	-	-	-	-	-	GS303	GS353
30" - 100	-	-	-	-	-	-	-	-	GS304	GS354
30" - 150	-	-	-	-	GS205	GS255	-	-	GS305	GS355
PSI										
15	GS109	GS159	-	-	GS209	GS259	-	-	GS309	GS359
15+	GS110	GS160	GP110	GP160	GS210	GS260	GP210	-	GS310	GS360
.1 lb. incr.	-	-	-	-	GS210-5	-	GP210-5	-	-	-
30	GS111	GS161	GP111	GP161	GS211	GS261	GP211	-	GS311	GS361
.25 lb. incr.	-	-	-	-	GS211-5	-	GP211-5	-	-	-
60	GS112	GS162	GP112	GP162	GS212	GS262	GP212	-	GS312	GS362
1 lb. incr.	-	-	-	-	GS212-5	-	GP212-5	-	-	-
100	GS113	GS163	GP113	GP163	GS213	GS263	GP213	-	GS313	GS363
1 lb. incr.	-	-	-	-	GS213-5	-	GP213-5	-	-	-
160	GS114	GS164	GP114	GP164	GS214	GS264	GP214	GP264	GS314	GS364
200	GS115	GS165	GP115	GP165	GS215	GS265	GP215	GP265	GS315	GS365
300	GS116	GS166	GP116	GP166	GS216	GS266	GP216	GP266	GS316	GS366
400	GS117	GS167	GP117	GP167	GS217	GS267	GP217	GP267	GS317	GS367
600	GS118	GS168	-	-	GS218	GS268	-	-	GS318	GS368
1000	GS119	GS169	-	-	GS219	GS269	-	-	GS319	GS369
1500*	GS120	GS170	-	-	GS220	GS270	-	-	GS320	GS370
2000*	GS121	GS171	-	-	GS221	GS271	-	-	GS321	GS371
3000*	GS122	GS172	-	-	GS222	GS272	-	-	GS322	GS372
4000*	GS123	GS173	-	-	GS223	GS273	-	-	GS323	GS373
5000*	GS124	GS174	-	-	GS224	GS274	-	-	GS324	GS374
6000*	-	-	-	-	GS225	GS275	-	-	GS325	GS375

* UL LISTED + HALF SCALE

NOTE: The following alternate options are available: [1] Stainless steel case in 1 1/2" or 2" diameter with CBM or BM connections. To order, change "GS" to "GSC". [2] Panel mount in black steel with posi-lock lens and CBM connections. To order, change "GS" to "PP". [3] 1 1/2" "PP" gauge available with chrome plated ring. To order, change "GS" to "PC". We reserve the right to send dual scaled gauges. If dual scales required, add the suffix [-1] for PSI-kg/cm², [-2] for PSI-kPa [-3] for PSI-Bar. Many other options available. Call for more information. Shipped individually boxed. Add "D" to Part# for display card. Individually boxed gauges will have a UPC#, if requested.

2" High Pressure CO₂ Gauges Black Steel Case

2" High pressure gauge with red zone for gas order alert. For use with CO₂ or other compressed gases. 1/4" NPT connection. Ⓛ Listed

Part#	UPC#	Description	Part#	UPC#	Description
GS241	51241	Bottom Mount [RHT] 3000 PSI	GS243	51243	Side Mount [RHT] 3000 PSI
GS242	51242	Bottom Mount [LHT] 3000 PSI	GS244	51244	Side Mount [LHT] 3000 PSI

Uniweild Products, Inc.
Fort Lauderdale, FL 33312 U.S.A.
800/323-2111 www.uniweild.com





Liquid Filled Gauges



**2 1/2"
[63mm] Gauge
1/4 NPT
Bottom Mount**

GSL302-3

Liquid fill [glycerine] dampens the damaging effects of excessive vibration and pulsation while providing continuous lubrication of the internals; that helps prevent corrosion. Meets [A.N.S.I. B40.1] Grade B for accuracy. Normal operating temperature range is -14 °F to 140 °F

Part#	UPC#	Pressure Range
GSL301-3	69103	30" Hg - 0 - 15 PSI [-1 - 0 - 1 Bar]
GSL302-3	69104	30" Hg - 0 - 30 PSI [-1 - 0 - 2 Bar]
GSL303-3	69105	30" Hg - 0 - 60 PSI [-1 - 0 - 4 Bar]
GSL308-3	69106	30" Hg Vac. [0 to - 1 Bar]
GSL309-3	69107	0 - 15 PSI [0 - 1 Bar]
GSL311-3	69108	0 - 30 PSI [0 - 2 Bar]
GSL312-3	69109	0 - 60 PSI [0 - 4 Bar]
GSL313-3	69110	0 - 100 PSI [0 - 7 Bar]
GSL314-3	69111	0 - 160 PSI [0 - 11 Bar]
GSL315-3	69112	0 - 200 PSI [0 - 14 Bar]
GSL316-3	69113	0 - 300 PSI [0 - 20 Bar]
GSL317-3	69114	0 - 400 PSI [0 - 27 Bar]
GSL318-3	69115	0 - 600 PSI [0 - 40 Bar]
GSL319-3	69118	0 - 1000 PSI [0 - 70 Bar]
GSL320-3	69119	0 - 1500 PSI [0 - 100 Bar]
GSL321-3	69120	0 - 2000 PSI [0 - 140 Bar]
GSL322-3	69121	0 - 3000 PSI [0 - 200 Bar]
GSL324-3	69122	0 - 5000 PSI [0 - 350 Bar]
GSL325-3	69123	0 - 6000 PSI [0 - 400 Bar]
GSL327-3	69124	0 - 10,000 PSI [0 - 700 Bar]

Gauges

Flowgauges & Medical Gauges

Uniweld flowgauges are designed for TIG or MIG welding applications. Uniweld medical gauges are designed for medical gas delivery systems in hospitals and in the home.



G51D



G55D

[Green background with white print]

	Part#	UPC#	Flow Gauges
Flowgauges	G51D	54104	1 1/2" Gauges [1/8" NPT] Steel Case 40 SCFH, Argon, AR/CO ₂ MIX [75%-25%] Calibrated for 71 Dr./.026 Orifice [60 PSI Max.]
	G87D	54104	1 1/2" Gauges [1/8" NPT] Steel Case 10-40 SCFH, CO ₂ Calibrated for 71 Dr./.026 Orifice [60 PSI Max.]
	G76D	54217	2" Gauges [1/4" NPT] Brass Case 10-50 SCFH, AR/CO ₂ MIX [75%-25%] Calibrated for 67 Dr./.032 Orifice [60 PSI Max.]
	G77D	54219	2" Gauges [1/4" NPT] Brass Case 20-100 SCFH, CO ₂ Calibrated for 67 Dr./.032 Orifice [60 PSI Max.]
	G86D	54222	2" Gauges [1/4" NPT] Brass Case 10-50 SCFH, CO ₂ Calibrated for 69 Dr./.029 Orifice [60 PSI Max.]
	G76SD	54217	2" Gauges [1/4" NPT] Steel Case 10-50 SCFH, AR/CO ₂ MIX [75%-25%] Calibrated for 67 Dr./.032 Orifice [60 PSI Max.]
	G77SD	54219	2" Gauges [1/4" NPT] Steel Case 20-100 SCFH, CO ₂ Calibrated for 67 Dr./.032 Orifice [60 PSI Max.]
	G86SD	54222	2" Gauges [1/4" NPT] Steel Case 10-50 SCFH, CO ₂ Calibrated for 69 Dr./.029 Orifice [60 PSI Max.]
Medical Gauges	G55D	54106	1 1/2" Gauges [1/8" NPT] Chromed Case 15 LPM, Plated Socket, Oxy Calibr. for 73 Dr./.024 Orifice [60 PSI Max.]
	G54D	54105	1 1/2" Gauges [1/8" NPT] Chromed Case, Plated Socket 4000 PSI.
	G62D	54211	2" Gauges [1/8" NPT] Chromed Case 15 LPM, Plated Socket, Oxy Calibr. for 77 Dr./.018 Orifice [120 PSI Max.]
	G63D	54212	2" Gauges [1/8" NPT] Chromed Case, Plated Socket 4000 PSI.



Welding Gauges

Replacement Gauges



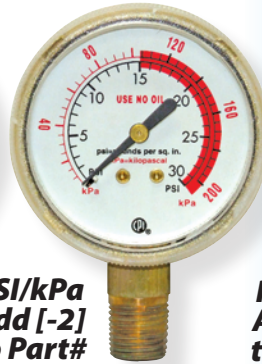
G15D



PSI Only



**PSI/Kg
Add [-1]
to Part#**



**PSI/kPa
Add [-2]
to Part#**



**PSI/Bar
Add [-3]
to Part#**

Pressure Calibration	1 1/2" GAUGES [1/8" NPT]			2" GAUGES [1/4" NPT**]			2 1/2" GAUGES [1/4" NPT**]	
	Powder Painted Steel Case B.M.	Gold Steel Case C.B.M.		Brass Case B.M.	Brass Case C.B.M. WITH WEEP HOLE	Gold Steel Case B.M.	Brass Case B.M.	Gold Steel Case B.M.
15 PSI	-	G20D [BLUE]	-	-	-	-	-	-
30 PSI [Red Line 15-30]	G15D*	G79D*	-	G2D	-	G2SD	G22D	G22SD
30 PSI	-	G80D*	-	G74D	-	G74SD	G75D	G75SD
60 PSI	-	G83D*	-	G5D	G105	G5SD	G25D	G25SD
100 PSI	G49D*	G85D*	G185	G6D	G106	G6SD	G26D	G26SD
200 PSI	-	G78D*	G178	G4D	G104	G4SD	G24D	G24SD
300 PSI	-	G84D*	G184	G33D	-	G33SD	-	-
400 PSI	-	G73D*	-	G1D	G101	G1SD	G21D	G21SD
1/4, 1/2, 3/4 CONTENTS	G19D*	-	-	-	-	-	-	-
600 PSI	-	-	-	G8D	G108	G8SD	G28D	G28SD
1000 PSI	-	-	-	G34D	-	G34SD	-	-
4000 PSI, (U) LISTED	G56D*	G82D*	G182	G7D	-	G7SD	G27D	G27SD
6000 PSI, (U) LISTED	-	-	-	G44D	-	G44SD	G46D	G46SD

Gauges

B.M. = Bottom Mount - C.B.M. = Center Back Mount. * With Gauge Boot. ** For 1/8" NPT add [-4] to Part Number.

Replacement Lenses

	Part#	1 1/2" Description	Part#	2" Description	Part#	2 1/2" Description
DISPLAY CARD	PL15	Posi-Lock	PL2	Posi-Lock	PL25	Posi-Lock
BULK	05-1-52	Flat Plastic	05-2-52-4	Flat Plastic		N/A
	05-1-52-7	Posi-Lock	05-2-52-7	Posi-Lock	05-3-52-8	Posi-Lock
	05-1-63	Friction Ring	05-2-63-2	Friction Ring		N/A



**GB20S
2" Gauge
Boot Set,
[2] Black**



**GB15S
1 1/2" Gauge
Boot Set,
[2] Black**

Uniweld Products, Inc.
Fort Lauderdale, FL 33312 U.S.A.
800/323-2111 www.uniweld.com

