

SANIFLO®

A pump company since 1958



Install your dream bathroom or
laundry room *Anywhere* you want.



↓ AREAS OF USE

The flexibility of Saniflo systems make any sanitary application imaginable. Compact and ready to plug and pump, they find multiple applications to solve multiple challenges:

-  **FAMILY HOUSE**
The Saniflo macerators and pumps are widely used in residential applications. They make it possible to install a toilet, a full bathroom, a kitchen or laundry room anywhere in one or two family houses, vacation homes, pool cabanas, etc.
-  **APARTMENT BUILDINGS / CONDOMINIUMS**
Saniflo offers sanitary solutions for many residential and commercial applications around the globe. Various restaurants, hotels, bars, spa centers, business offices and also public buildings such as schools, hospitals, airports, museums are all equipped with Saniflo units.
-  **COMMERCIAL APPLICATIONS**
Saniflo is a partner of choice for manufacturing industries. The reliable and cost-effective Saniflo systems offer intelligent and dedicated solutions in commercial and industrial environments.
-  **MOBILE UNITS / CABINS**
Compact and easy to connect to sewer lines or a septic tank, Saniflo macerators and pumps are the perfect choice to install a toilet, wash basin or shower on trailers, bungalows, modular structures, floating bathhouses, etc.

INTRODUCING THE SANIFLO SYSTEM

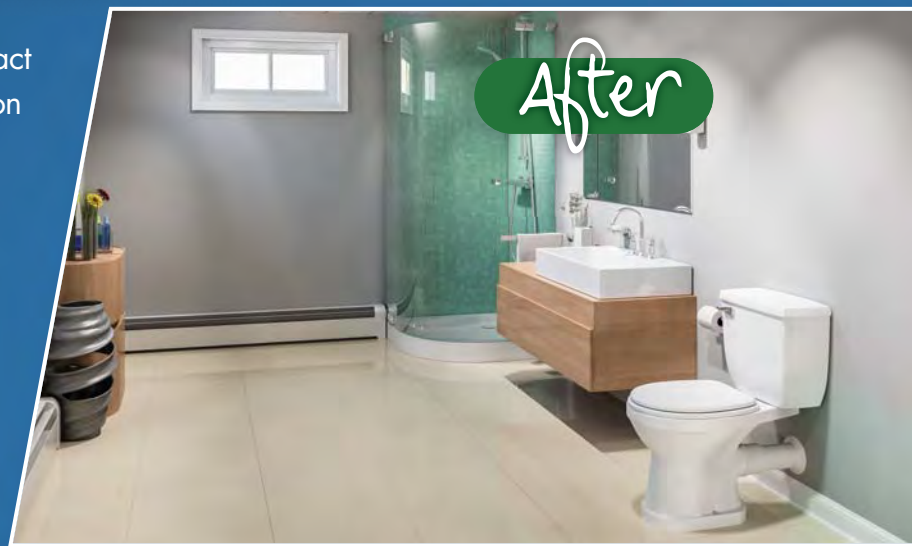
Where Bathrooms Defy Gravity!



Before

Floors, walls and structural integrity remain intact while the project time is reduced and construction mess is virtually eliminated.

With Saniflo, you decide where your new bathroom goes. You are no longer limited to locations where downhill drainage or gravity evacuates waste. You don't even need to be in close proximity to the main waste pipe (soil stack).



After

Saniflo offers a range of macerating and grinder pump systems that greatly reduces the size of the waste products. Because of this, larger diameter discharge lines are unnecessary. In fact, all that is needed is a 3/4" diameter discharge pipe.

Using above-floor plumbing technology, there is **no need to dig the ground** which means no disruptive or destructive remodeling.

SMARTER

Saniflo offers **high quality, low cost** and superior installation flexibility. Saniflo systems are a very economical way to increase the value of any home with the addition of a toilet, full bathroom or even a laundry room anywhere.

FASTER

Saniflo systems are **the ideal solution** for installing a new bathroom or fixture by **simplifying construction** without the long hours of labor.

SANIFLO MAKES IT SIMPLE!

We will counsel you on which product is best for you and direct you to a distributor in your area. Saniflo is the easy solution for all bathroom installations.

CLEANER

The motor of Saniflo's units have no gears or brushes to wear out. It is filled with oil and sealed at our factory which provides a **maintenance-free** product. It's macerating systems are equipped with **stainless steel** blades eliminating the need to replace them.

Operating Principle of the Saniflo System



1

The toilet is flushed, the water level rises and the Saniflo grinder motor turns on automatically.



2

The blades driven by the motor grind the contents into tiny particles in 3 or 4 seconds.



3

The finely ground particles are pumped through a standard pipe just 3/4 or 1 inch in diameter.



4

The macerating tank is now empty (apart from the water seal) and the system is ready for use again.



Scan with your smart phone to watch a video clip of the Saniflo system operating principle.

WHAT IS A MACERATOR?

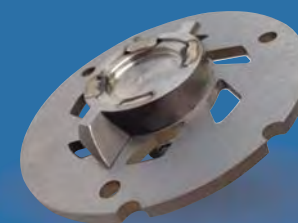
To "macerate" is to soften and break in pieces. Our Saniflo macerating systems use a stainless steel rotating blade to liquefy human waste and toilet paper. When mixed with flushing water the waste is pumped into a sanitary sewer as a fine slurry.

SaniAccess3 • SaniPlus • SaniPack • SaniTop • SaniCompact • SaniStar

WHAT IS A GRINDER?

The grinder will accept accidental flushing of sanitary items such as feminine hygiene products. It grinds up the waste produced (i.e. toilet use, shower, washing machine, etc.) and pumps it into a sanitary sewer as a fine slurry.

SaniBest Pro • SaniGrind Pro • SaniCubic 1 • SaniCubic 2



ALL YOU NEED IS A POWER SUPPLY AND WATER!

TYPES OF INSTALLATIONS

Saniflo offers flexibility when it comes to installation. We understand that different applications require a different approach. This is why we provide the necessary tools for you to install a full or half bathroom with the finished look you desire.

OPTION 1 – Installation with the pump and pipes behind the wall

(Please refer to page 8 for more information)



OPTION 2 – Installation with the pump behind the toilet



Now you can install a bathroom where previously thought impossible. Best of all, a Saniflo installation reduces cost, construction mess, project time and eliminates structural damage while increasing the convenience and value of your home.

SANIFLO TWO-PIECE TOILET SYSTEM



Insulated toilet tank
Part# 005
Round front toilet bowl
Part# 003



FULL COMPLIANCE WITH THE AMERICANS WITH DISABILITIES ACT (ADA)

Insulated toilet tank
Part# 005
Elongated front toilet bowl
Part# 007

Saniflo's vitreous china toilets* are designed to be durable with a high gloss finish for an easy clean surface. These floor mounted toilets have the desired height to meet comfort and aesthetics to provide a unique style. Recognized by the EPA as being under their water-saving Watersense program, our high-efficiency toilets use 1.28 gallons per flush. These toilets are designed to be used with any standard toilet seat (not supplied by Saniflo).

The 1.28 GPF Watersense toilet tank completes the system. Insulated from factory, this tank eliminates the water droplets created by condensation. It comes already assembled and equipped with all the necessary hardware to complete the installation.

*Suitable for use with Saniaccess3, Saniplus, Sanibest Pro and Sanitop.

COMPLETE YOUR SANIFLO SYSTEM

ALL YOU NEED IS...



003/007 Toilet Bowl



005 Toilet Tank

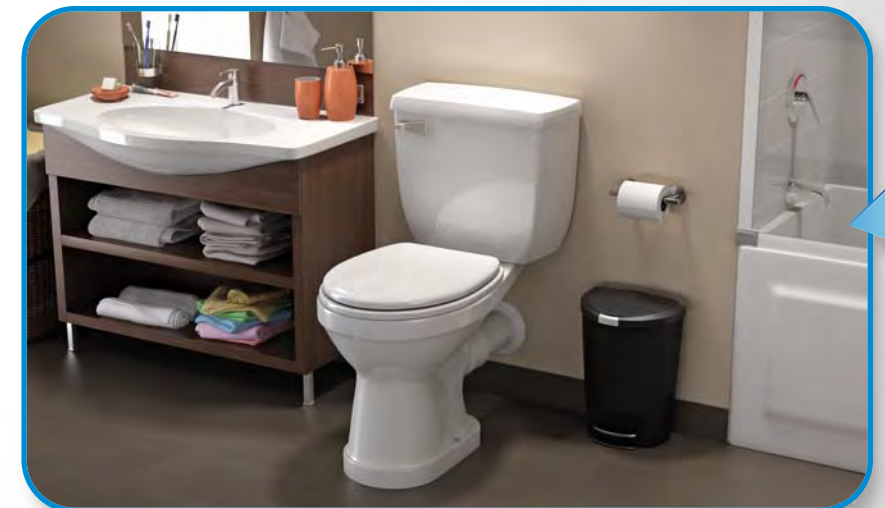


Macerator/Grinder Pump



030 Extension Pipe

Choose any fixtures (sink, shower, bathtub) from different brands to complete your dream bathroom. There is no limit to what you can achieve with Saniflo systems. Increase your home value without major cost and have a full functioning bathroom in less than a day.



TO GET

ACHIEVE THE BEST LOOK BY CONCEALING ALL THE PLUMBING



SFA Saniflo introduced the Extension Pipe to simplify the installation process and make it easier to hide the pump and plumbing behind any finished wall. This extension pipe is used with the Saniaccess3, Saniplus, Sanibest Pro and Sanitop systems.

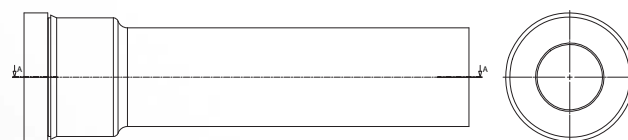
The 18" extension pipe was designed with the idea to reduce time when installing the macerating and grinding systems. It has an inner gasket which connects to the rear spigot of the Saniflo toilet without any difficulty. Its sealed connection keeps water from seeping out once the toilet is flushed.

The ease of installation is the reason why installers recommend the extension pipe for any Saniflo installation. When using the extension pipe, the toilet bowl should be raised 3/8 inch for additional gravity flow toward the macerating or grinding system.

DIMENSIONS:

Length:	18"
Diameter of pipe (smaller end):	4"
Diameter of bell housing (Large end):	5"

Part # 030



- Macerating and grinding units for **residential and commercial** applications
- **No breaking of concrete** or finished floor eliminating any possible mess
- **Easy installation** that allows you to complete your dream bathroom in a timely fashion
- A **cost effective** way to install extra bathroom facilities virtually anywhere

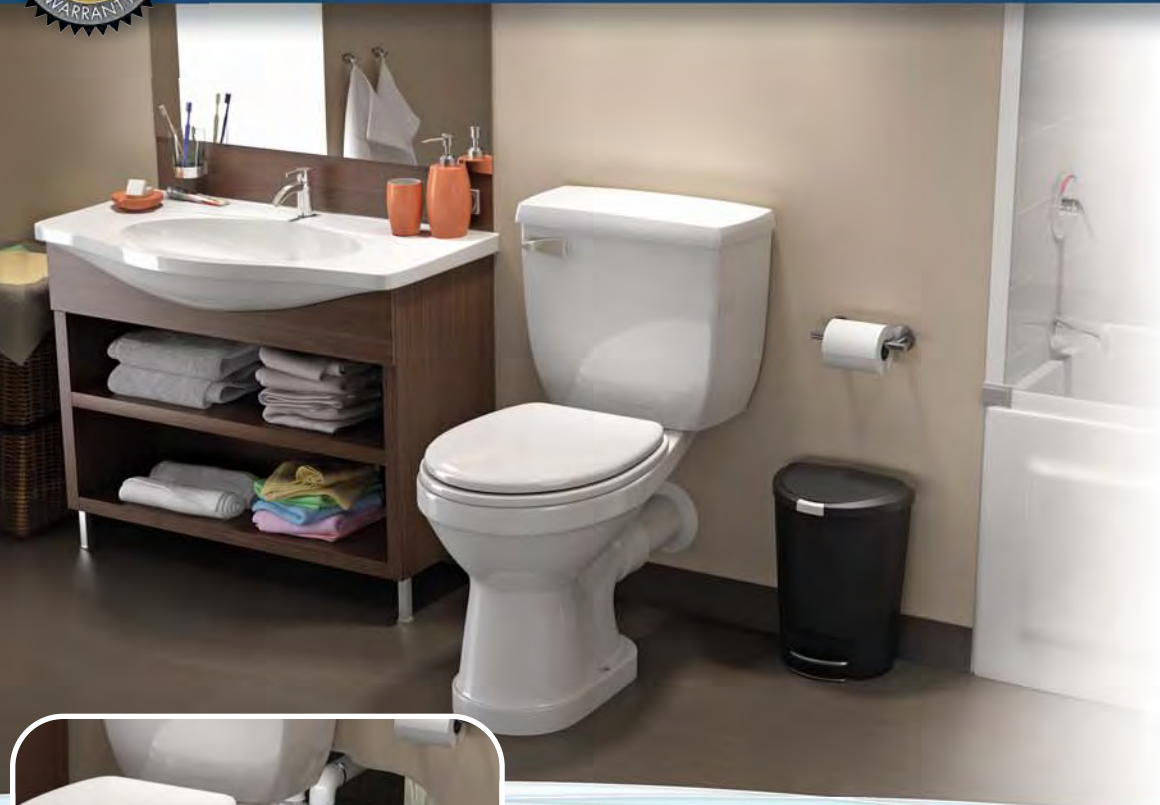


Full Bathrooms

If you have installation questions about our products or possible applications, please contact our technical department at our toll free number US: 800-571-8191, Canada: 800-363-5874

SANIACCESS 3

The most advanced macerator in the world with dual accessibility



Conceal your pump behind the wall using our Extension Pipe (Page 8)

- Complete your installation using **Saniflo's rear discharge toilets**. (Please refer to page 7 for more information)
- **Mix and match** your fixtures (shower, bathtub and sink) from **different brands** to create your personalized one of a kind bathroom.
- Take advantage of the **different types of installations** Saniflo has to offer. From having the pump right behind the toilet to concealing the pump and pipes behind the wall. (Please refer to page 6 for more information)



Part# 082

Possible Connections:

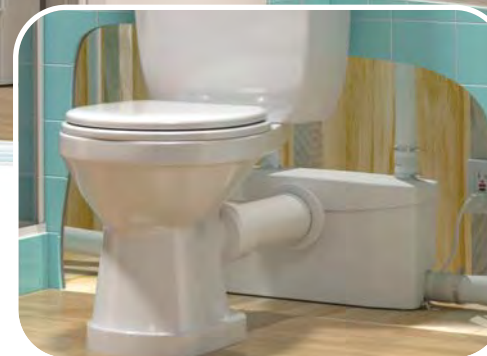


- 3/4" Discharge
- 1 1/2" Vent
- Connect to Saniflo toilet
- Connect to shower, bathtub or sink



SANIPLUS

The original macerator for a full bathroom



Conceal your pump behind the wall using our Extension Pipe (Page 8)

- Complete your installation using **Saniflo's rear discharge toilets**. (Please refer to page 7 for more information)
- **Mix and match** your fixtures (shower, bathtub and sink) from **different brands** to create your personalized one of a kind bathroom.
- Take advantage of the **different types of installations** Saniflo has to offer. From having the pump right behind the toilet to concealing the pump and pipes behind the wall. (Please refer to page 6 for more information)



Part# 002

Possible Connections:



- 3/4" Discharge
- 1 1/2" Vent
- Connect to Saniflo toilet
- Connect to shower, bathtub or sink



Choose any shower, bathtub or sink and enjoy your dream bathroom.

Choose any shower, bathtub or sink and enjoy your dream bathroom.

SANIBEST^{Pro}

Full bathroom for demanding situations



GRINDER TECHNOLOGY

SANIGRIND^{Pro}

A solution for any conventional toilet



Pump Type:
GRINDER

Discharge up to:
↑ 25 Ft. ↑ and/or ← 150 Ft. →

Power/Electrical Information:
115V – 60 Hz / 1 HP / 9.0 A

Dimensions:
H 10½" (26.8cm) x W 20⅝" (52cm) x D 8" (20.5cm)

Discharge pipe diameter:
¾" rigid pipe

Discharge flow rate at 25':
19 gal per min (72 liters per min)

Discharge flow rate at 3':
38 gal per min (145 liters per min)

Max. Temperature:
104°F (40°C)



Pump Type:
GRINDER

Discharge up to:
↑ 25 Ft. ↑ and/or ← 150 Ft. →

Power/Electrical Information:
115V – 60 Hz / 1 HP / 9.0 A

Dimensions:
H 10½" (26.8cm) x W 20⅝" (52cm) x D 8" (20.5cm)

Discharge pipe diameter:
¾" rigid pipe

Discharge flow rate at 25':
19 gal per min (72 liters per min)

Discharge flow rate at 3':
38 gal per min (145 liters per min)

Max. Temperature:
104°F (40°C)



Conceal your pump behind the wall using our Extension Pipe (Page 8)

- Complete your installation using **Saniflo's rear discharge toilets**. (Please refer to page 7 for more information)
- **Mix and match** your fixtures (shower, bathtub and sink) from **different brands** to create your personalized one of a kind bathroom.
- Take advantage of the **different types of installations** Saniflo has to offer. From having the pump right behind the toilet to concealing the pump and pipes behind the wall. (Please refer to page 6 for more information)



EASY SERVICE ACCESS PANEL

Part# 013

Possible Connections:



- ¾" Discharge
- 1½" Vent
- Connect to Saniflo toilet
- Connect to shower, bathtub, sink or washing machine**



** Indirect Connection



View of installation behind the wall

- Great for retrofitting applications. **Designed to work with conventional toilets** not supplied by Saniflo.
- **Mix and match** your fixtures (shower, bathtub and sink) from **different brands** and choose **any conventional toilet** to create your personalized one of a kind bathroom.
- Take advantage of the **different types of installations** Saniflo has to offer. The unit can either be installed on the floor while the rest of the fixtures are installed on a raised platform or you can lower the pump eliminating the need to create a subfloor.



EASY SERVICE ACCESS PANEL

Part# 014

Possible Connections:



- ¾" Discharge
- 1½" Vent
- Connect to a conventional toilet
- Connect to shower, bathtub, sink or washing machine**



** Indirect Connection

Choose any shower, bathtub or sink and enjoy your dream bathroom.

Choose any conventional toilet, shower, bathtub or sink and enjoy your dream bathroom.

SANIPACK®

A full bathroom with style



View of installation behind the wall

- Designed to work with **any wall-hung toilet** not supplied by Saniflo.
- **Mix and match** your fixtures (shower, sink) from **different brands** and choose **any wall-hung toilet** to create your personalized one of a kind bathroom.
- The macerating system is **easy to conceal** with versatile and **quiet operation**. As the pump and pipes are **hidden inside the wall**, this type of installation gives you the clean look of a European bathroom.



Part# 011

Pump Type:
MACERATOR

Discharge up to:
↑ 15 Ft. ↑ and/or ← 150 Ft. →

Power/Electrical Information:
115V – 60 Hz / 0.5 HP / 4.5 A

Dimensions:
H 11 5/8" (29.5cm) x W 16 3/4"
(42.5cm) x D 5 3/4" (14.6cm)

Discharge pipe diameter:
3/4" rigid pipe

Discharge flow rate at 15':
17 gal per min (66 liters per min)

Discharge flow rate at 3':
27 gal per min (103 liters per min)

Max. Temperature:
104°F (40°C)

Possible Connections:



- 3/4" Discharge
- 1 1/2" Vent
- Connect to a wall-hung toilet
- Connect to shower or sink



- Macerating units for **residential applications**
- **No breaking of concrete** or finished floor eliminating any possible mess
- **Easy installation** that allows you to complete your dream half bathroom in a timely fashion
- A **cost effective** way to install extra half-bathroom facilities virtually anywhere

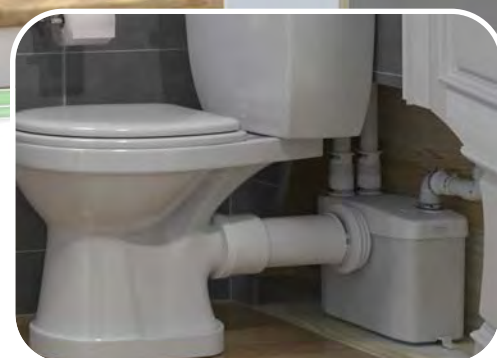
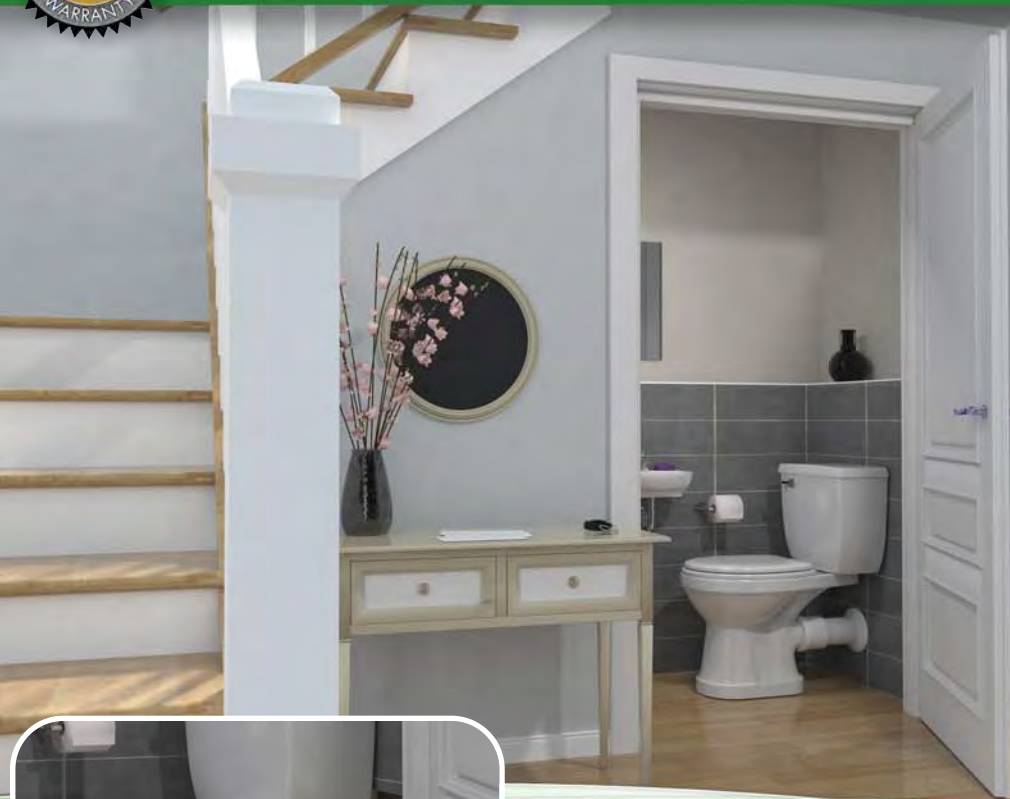


Half Bathrooms

Choose any wall-hung toilet, shower or sink and enjoy your dream bathroom.

SANITOP®

A half bathroom anywhere



Conceal your pump behind the wall using our Extension Pipe (Page 8)

- Complete your installation using **Saniflo's rear discharge toilets**. (Please refer to page 7 for more information)
- **Mix and match** your fixtures from **different brands** to create your personalized one of a kind half-bathroom.
- Take advantage of the **different types of installations** Saniflo has to offer. From having the pump right behind the toilet to concealing the pump and pipes behind the wall. (Please refer to page 6 for more information)



Part# 017

Pump Type:
MACERATOR

Discharge up to:
↑ 12 Ft. ↑ and/or ← 120 Ft. →

Power/Electrical Information:
115V – 60 Hz / 0.3 HP / 5.0 A

Dimensions:
H 10⁷/₁₆" (26.5cm) x W 13" (33cm) x D 6¹/₂" (16.5cm)

Discharge pipe diameter:
¾" rigid pipe

Discharge flow rate at 12':
14 gal per min (53 liters per min)

Discharge flow rate at 3':
21 gal per min (80 liters per min)

Max. Temperature:
104°F (40°C)

Possible Connections:



- ¾" Discharge
- 1½" Vent
- Connect to Saniflo toilet
- Connect to sink



SANICOMPACT®

The green solution



View of installation behind the wall

Pump Type:
MACERATOR

Discharge up to:
↑ 9 Ft. ↑ and/or ← 120 Ft. →

Power/Electrical Information:
115V – 60 Hz / 0.3 HP / 7.2 A

Dimensions:
H 18¹/₂" (47cm) x W 14¹/₂" (36cm) x D 21¹/₂" (55cm)

Discharge pipe diameter:
1" rigid pipe

Discharge flow rate at 9':
13 gal per min (49 liters per min)

Discharge flow rate at 3':
16 gal per min (61 liters per min)

Max. Temperature:
95°F (35°C)

Possible Connections:



- 1" Discharge
- Connect to sink



Part# 023

- A newly designed toilet with **built-in macerator** for green conscious users that want to save water.
- **Standard dual flush version** uses 1.28 gallons per flush (4.8 lpf) and 1 gallon per flush (3.8 lpf).
- A toilet that's **ideal for tight spots** where conventional toilets can't fit and for people with physical limitations requiring easy access to a toilet.



Choose any sink and enjoy your dream half-bathroom.

Choose any sink and enjoy your dream half-bathroom.

SANISTAR®

A wall-hung toilet with saniflo inside



View of installation behind the wall

- Pump Type:**
MACERATOR
- Discharge up to:**
↑ 9 Ft. ↑ and/or ← 100 Ft. →
- Power/Electrical Information:**
115V – 60 Hz / 0.4 HP / 9.0 A
- Dimensions:**
H 16³/₈" (42cm) x W 15³/₄" (40cm)
x D 20¹/₂" (52cm)
- Discharge pipe diameter:**
1" rigid pipe
- Discharge flow rate at 9':**
9 gal per min (34 liters per min)
- Discharge flow rate at 3':**
15 gal per min (58 liters per min)
- Max. Temperature:**
95°F (35°C)

Possible Connections:



- 1" Discharge
- Connect to sink



Part# 012



- A **wall-hung toilet with built-in macerator** for green conscious users that want to save water.
- **Standard dual flush version** uses 1.28 gallons per flush (4.8 lpf) and 1 gallon per flush (3.8 lpf).
- A **modern shaped wall-hung toilet** that saves space and can be hung on any sturdy wall (includes the wall carrier for mounting) giving a stylish and luxurious style appearance.

- Simplex and Duplex grinder systems for **residential and commercial** applications. Our grinders provide superior performance and absolute reliability.
- **No breaking of concrete** or finished floor eliminating any possible mess and without compromising structural integrity of the home or building.
- **Easy installation** that allows you to add multiple fixtures and bathrooms to a residence or building in a timely manner.
- A **cost effective** way to install extra bathroom facilities and plumbing fixtures virtually anywhere.



Entire Home and Buildings

Choose any sink and enjoy your dream half-bathroom.

SANICUBIC 1

Above the floor simplex system



Pump Type:
GRINDER

Discharge up to:
↑ 36 Ft. ↑ and/or ← 328 Ft. →

Power/Electrical Information:
115V - 60 Hz / 1 HP / 10 A

Dimensions:
H 14 1/4" (36cm) x W 21 1/4" (54cm)
x D 16 3/4" (42.6cm)

Discharge pipe diameter:
1 1/2" rigid pipe

Discharge flow rate at 36':
26 gal per min (98 liters per min)

Discharge flow rate at 3':
50 gal per min (189 liters per min)

Max. Temperature:
158°F (70°C)



Scan with your smart phone to watch a clip of the SaniCubic 1 system.

New grinding technology eliminates clogging issues found on sewage ejector stations as **it can handle feminine hygiene products.**

- The Sanicubic 1 is a **pre-assembled simplex grinder** system designed for residential and commercial applications.
- Handles the **waste from multiple bathrooms** and fixtures throughout a home or building.
- **Waterproof enclosure** rated to IP68 standards. Equipped with an **external control panel and alarm system.**
- **Easy installation above the floor** eliminates any possible mess and cuts down on additional expenses.
- It can be **retrofitted into an existing sewage ejector** basin of at least 24" diameter for a quick and easy pump exchange.



Part# 089

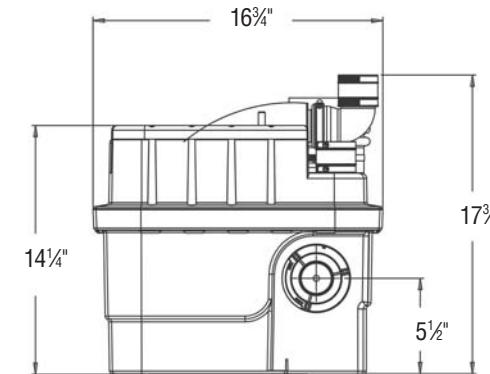
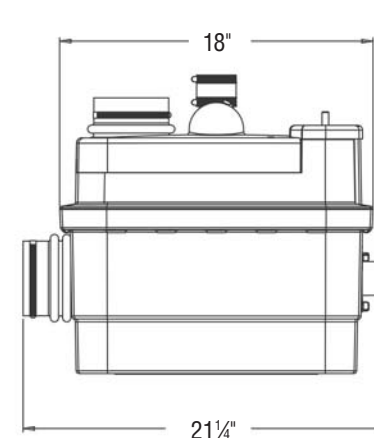
Possible Connections:



- 1 1/2" Discharge
- 1 1/2" Vent
- Connect to any toilet, sink, shower, bathtub, washing machine, etc.



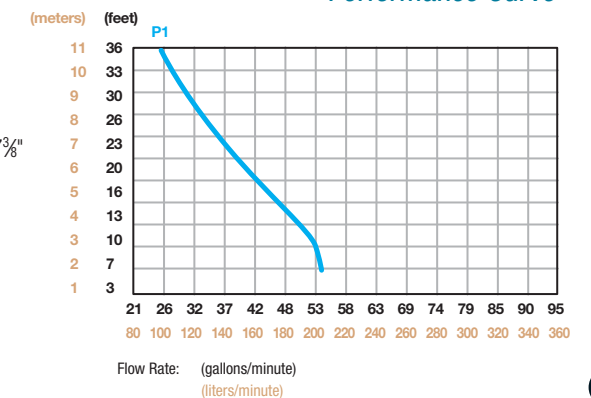
- 1 CONTROL PANEL**
External wired control panel with LED power control and overload indicator
- 2 MOTOR**
A powerful 1 HP grinder pump
- 3 INLET - UP TO 4 INLETS**
3 inlets – 1 1/2" or 4" / 1 inlet – 1 1/2" (coupling provided)
- 4 DISCHARGE**
1 1/2" with check valve built inside
- 5 VENT**
1 1/2"
- 6 ALARM**
Equipped with a visual and audible external alarm box (15 ft. long wire)



BENEFITS OF THE SANICUBIC 1

- Sanicubic 1 can handle up to **50 gallons** per minute from several fixtures
- Powerful motor for absolute reliability and efficiency
- Wired audible and visual LED alarm included with the system
- Easy installation above the floor
- Accepts accidental flushing of sanitary items, such as feminine hygiene products.
- IP68 rated enclosure for possible submergence

Performance Curve



Make the impossible possible with Saniflo!

SANICUBIC 2

Above the floor duplex system



Pump Type:
GRINDER

Discharge up to:
↑ 36 Ft. ↑ and/or ← 328 Ft. →

Power/Electrical Information:
220/240V - 60 Hz / 2 x 1 HP / 13 A

Dimensions:
H 16½" (42cm) x W 23¾" (60cm) x
D 19¼" (49cm)

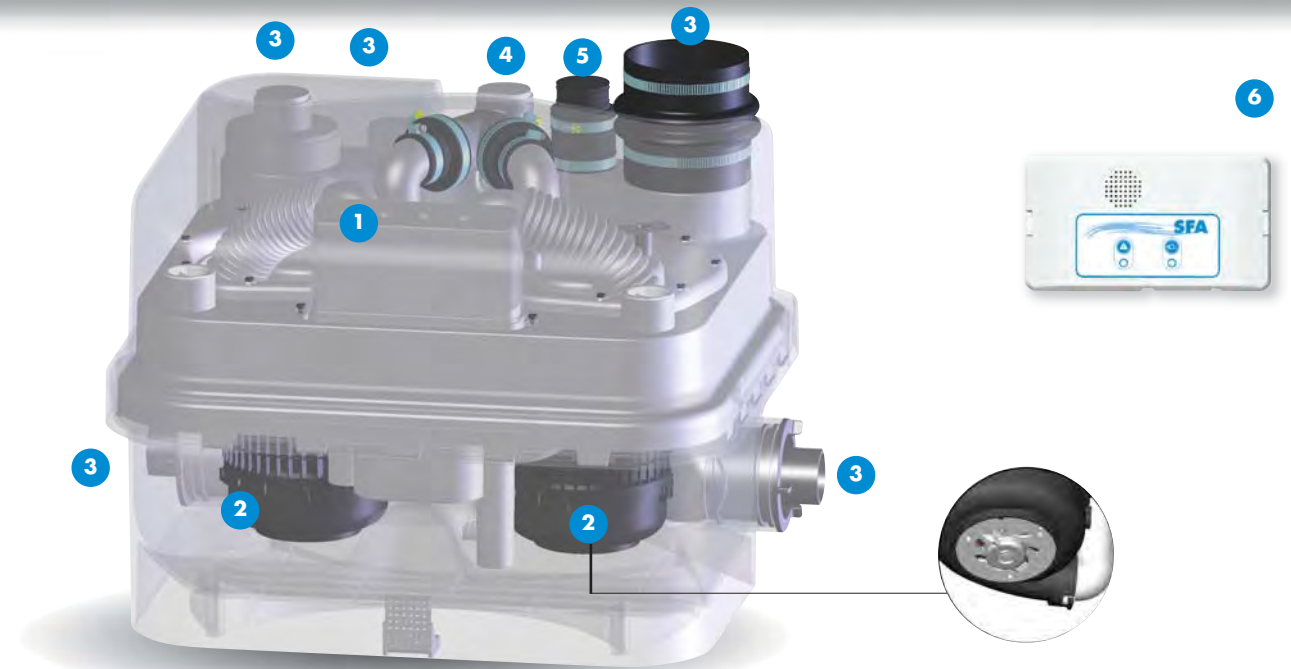
Discharge pipe diameter:
1½" rigid pipe

Discharge flow rate at 36':
38 gal per min (144 liters per min)**

Discharge flow rate at 3':
90 gal per min (341 liters per min)**

Max. Temperature:
158°F (70°C)

**Both motors in operation



New grinding technology eliminates clogging issues found on sewage ejector stations as **it can handle feminine hygiene products.**

- The Sanicubic 2 is a **pre-assembled duplex grinder system** designed for both **residential and commercial applications.**
- Heavy duty grinders meet the demanding need to handle the waste from **multiple bathrooms and fixtures** throughout commercial or residential building.
- Easy **installation above the floor** eliminates any possible mess and **cuts down on additional expenses** without impacting the structural integrity of the building.
- Smart-pump technology** allows both pumps to work simultaneously if the incoming rate is higher than the discharge rate of the single pump. The **discharge rate increases roughly 80%** until the condition is alleviated.



Part# 029

Possible Connections:



- 1½" Discharge
- 1½" Vent
- Connect to any toilet, sink, shower, bathtub, washing machine, etc.



1 CONTROL PANEL

Visual and audible mounted alarm, wired audible alarm, LED power control and overload indicator

2 MOTORS

Two powerful grinder pumps of 1 HP each

3 INLET - UP TO 5 INLETS

4 inlets – 1 ½" or 4" / 1 inlet – 1 ½" (coupling provided)

4 DISCHARGE

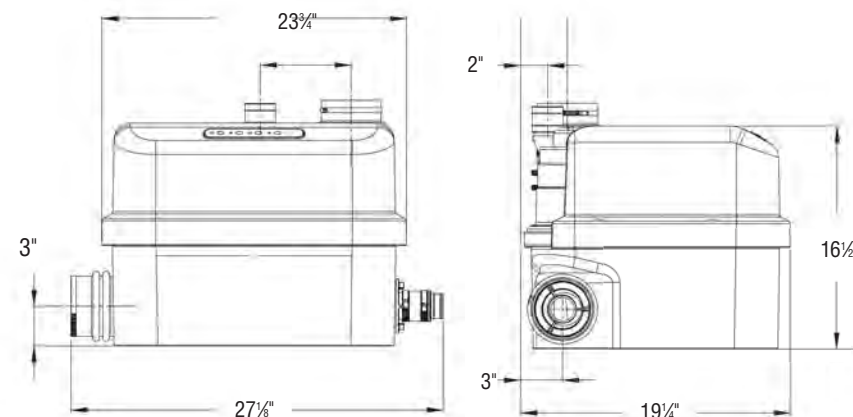
1½" with check valves built inside

5 VENT

1½"

6 ALARM

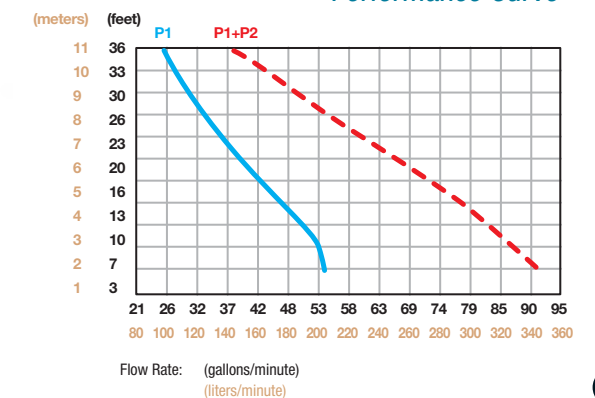
Equipped with a visual and audible external alarm box (15 ft. long wire)



BENEFITS OF THE SANICUBIC 2

- Sanicubic 2 can handle up to **90 gallons** per minute from several fixtures
- Dual motor for absolute reliability and power
- Visual LED and audible alarm mounted on the unit (wired audible alarm included with the system)
- Easy installation above the floor
- Accepts accidental flushing of sanitary items, such as feminine hygiene products

Performance Curve



Make the impossible possible with Saniflo!



- Drain water pumps for **residential and commercial applications**



- **Silent technology** and modern design with unprecedented performance and features



- **Powerful** and yet **economical** drain pumps for various types of installations



Drain and Condensate Pumps

SANIVITE®

commercial drain water pump



Pump Type:
DRAIN PUMP

Discharge up to:
↑ 16 Ft. ↑ and/or ← 150 Ft. →

Power/Electrical Information:
115V – 60 Hz / 0.4 HP / 4.5 A

Dimensions:
H 10 1/8" (26cm) x W 14 5/8" (37cm)
x D 7 1/4" (18.5cm)

Discharge pipe diameter:
1" rigid pipe

Discharge flow rate at 16':
18 gal per min (68 liters per min)

Discharge flow rate at 3':
29 gal per min (110 liters per min)

Max. Temperature:
140°F (60°C)

Possible Connections:



● 1" Discharge

● 1 1/2" Vent

● Connect to shower, bathtub, sink or washing machine**

** Indirect Connection

CommercialGrade



Part# 008

- The **perfect quiet solution** to install a kitchen or sink anywhere you never thought possible.
- Ideal for **commercial or heavy-duty residential** applications.
- **Pre-assembled system with low inlets** and built-in check valves.
- Small enough to fit inside a kitchen cabinet with the capability to **handle hot water and grease buildup**.

An easy solution for a kitchen installation, a remote laundry room or for any gray water application.

SANISWIFT®

Residential drain water pump



Pump Type:
DRAIN PUMP

Discharge up to:
↑ 14 Ft. ↑ and/or ← 140 Ft. →

Power/Electrical Information:
115V – 60 Hz / 0.3 HP / 4.5 A

Dimensions:
H 8¾" (22cm) x W 9" (23cm) x
D 10¼" (26cm)

Discharge pipe diameter:
1" rigid pipe

Discharge flow rate at 14':
18 gal per min (70 liters per min)

Discharge flow rate at 3':
24 gal per min (89 liters per min)

Max. Temperature:
140°F (60°C)

SANISHOWER®

Imagine your new shower anywhere



Pump Type:
DRAIN PUMP

Discharge up to:
↑ 12 Ft. ↑ and/or ← 100 Ft. →

Power/Electrical Information:
115V – 60 Hz / 0.2 HP / 5.5 A

Dimensions:
H 5¾" (15cm) x W 11½" (29.5cm) x D 6¾" (16cm)

Discharge pipe diameter:
¾" rigid pipe

Discharge flow rate at 12':
14 gal per min (50 liters per min)

Discharge flow rate at 3':
20 gal per min (77 liters per min)

Max. Temperature:
104°F (40°C)

ResidentialGrade

- With **unprecedented performance** and features, the Saniswift is unmatched in its class.
- Ideal for **residential applications**.
- **Powerful and economical** with a compact design which makes it perfect for installations anywhere you never thought possible.
- **Pre-assembled system with low inlets** and built-in check valves.



Part# 021

Possible Connections:



- 1" Discharge
- 1½" Vent
- Connect to shower, bathtub, sink or washing machine**

** Indirect Connection



An easy solution for a kitchen installation, a remote laundry room or for any gray water application.

Possible Connections:



- ¾" Discharge
- 1½" Vent
- Connect to shower or sink

MediumDuty



Part# 010

- Easy to install and **small enough to fit underneath a shower base**.
- Ideal for **medium duty applications**.
- Pre-assembled **system with a low inlet** and a built-in check valve.
- It gives you a fast and easy way to add an **additional sink and/or shower to your home**.



An easy solution for a sink, shower or for any gray water application.

SANICONDENS®

Pumps away condensate



Pump Type:
CONDENSATE PUMP

Discharge up to:
↑ 15 Ft. ↑ and/or ← 150 Ft. →

Power/Electrical Information:
115V – 60 Hz / 1/30HP / 1.5 A

Dimensions:
H 6⁵/₈" (17cm) x W 9¹/₂" (24.2cm) x
D 5⁵/₈" (14.3cm)

Discharge pipe diameter:
3/8" vinyl tubing

Discharge flow rate at 15':
30 gal per hour (114 liters per hour)

Discharge flow rate at 3':
86 gal per hour (326 liters per hour)

Max. Temperature:
160°F (70°C)

Possible Connections:



- 3/8" Discharge
- Connect to boiler, air conditioner, etc.



Part# 040

- One of the **most powerful and quiet condensate pumps** on the market with standard features that no competitor can match.
- Pumps the condensate discharge from a **condensing boiler or other water producing fixtures** to an existing drain.
- Comes with provisions for a ready-to-wire connection to an external overflow switch that will shut down an appliance or alert the homeowner.
- The two quart capacity condensate pump comes **equipped with 20 feet of vinyl tubing and with a discharge connection** to adapt to a PVC pipe.



SANICONDENS® BEST

Neutralizes and pumps away condensate



Pump Type:
CONDENSATE PUMP

Discharge up to:
↑ 15 Ft. ↑ and/or ← 150 Ft. →

Power/Electrical Information:
115V – 60 Hz / 1/30HP / 1.5 A

Dimensions:
H 10" (25.4cm) x W 11⁷/₈" (30.2cm)
x D 7¹/₂" (19cm)

Discharge pipe diameter:
3/8" vinyl tubing

Discharge flow rate at 15':
30 gal per hour (114 liters per hour)

Discharge flow rate at 3':
86 gal per hour (326 liters per hour)

Max. Temperature:
160°F (70°C)

Possible Connections:



- 3/8" Discharge
- Connect to boiler, air conditioner, etc.
- Neutralizing agent compartment



Available Summer 2015

Part# 041

- One of the **most powerful and quiet condensate pumps** on the market with standard features that no competitor can match.
- Condensate pump with a **built-in neutralizer** to raise pH levels for harsh HVAC applications
- Pumps the condensate discharge from a **condensing boiler or other water producing fixtures** to an existing drain.
- Comes with provisions for a ready-to-wire connection to an external overflow switch that will shut down an appliance or alert the homeowner.
- The two quart capacity condensate pump comes **equipped with 20 feet of vinyl tubing and with a discharge connection** to adapt to a PVC pipe.



SANIACCESSORIES

Protection for your peace of mind

SANIALARM

Saniflo provides an efficient solution that instantly alerts the homeowner of an abnormal water level inside the pump preventing inappropriate use and carry out a prompt intervention.

Part# 050

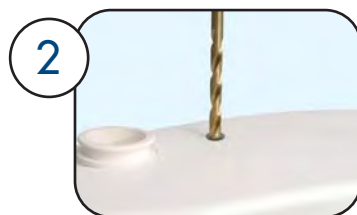


The SaniAlarm has a level pressure switch that triggers an alarm fixed on the top of the unit if the volume of water exceeds the maximum allowed level. The alarm emits a continuous 80 dB warning sound until it is switched off or the problem is rectified. The SaniAlarm is battery operated and can be installed on most Saniflo macerating units and drain water pumps.

*Suitable for use with Saniplus, Sanibest Pro, Sanipack, Sanigrind Pro and Sanivite



1 Install two AA batteries (not included)



2 Drill a 3/8" diameter hole on top of the case where indicated.



3 Insert the tube and position the SaniAlarm on top.



4 Turn the switch to the ON position.

DESCALER

Prolongs the life of all Saniflo pumps by cleaning and disinfecting. This special formula is perfectly designed for cleaning and descaling the heart of your system and its internal components.



Part# 052



Disconnect from the main power.



Pour the solution inside the bowl and flush the toilet once.



Let the solution sit inside the toilet and pump for a couple of hours.



Connect to main power supply and flush the toilet a couple of times.

- Specifically created for use with Saniflo products
- Laboratory formulated with phosphoric acid
- Concentrated solution for optimum cleaning power
- Regular usage prolongs unit life and maintains efficiency
- Harmless to septic tank operation

Plan your project using the tools provided on our website to choose the best system for your application.

Find dealers and installers near your area.

Want to turn an unfinished room into a finished bathroom or laundry room?



You can find answers to frequently asked questions by visiting our website or by calling our live toll free number and speaking with a certified technician.

Enjoy your new addition with the confidence of owning a great system from a reputable company with more than 57 years of experience.

Saniflo will proudly guide and advise you throughout this entire process. During the course, you will find the different strengths and advantages of our systems. You will have the satisfaction of designing and creating your new bathroom.

It's as easy as Saniflo!

VISIT OUR **SANIFLO WEBSITE** WITH ESPECIALLY DEDICATED SPACE FOR YOUR NEEDS. MORE COMPLETE AND INTERACTIVE THAN EVER!

Download the **FREE SANIFLO App** today! Available on iPhone and Android smartphones.

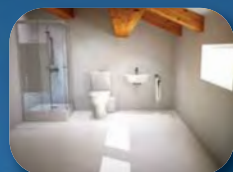


Scan with your smart phone to watch a video clip of the following:

TV Commercial



The operating principle



Saniaccess3



Sanicompact



Sanicubic 1



FOLLOW US ON FACEBOOK!

See installations and common questions from users all over the country.



Post a photo of your installation and enter for a chance to WIN FREE PRIZES!

Reasons why you shouldn't consider breaking the concrete

Try **SANIFLO** for your next bathroom addition or home project.

RED FLAGS TO REMEMBER

- **Cutting concrete undermines structural integrity:** Any time you cut into a slab, you decrease the foundational integrity of the building — no matter how close to a perfect cut you make. You may be able to patch the hole you create well enough to eliminate any aesthetic objections. But is that floor as solid as it was before you began to cut? I would bet not — especially if you fail to use the same or a better grade of concrete. And if the home sits on ground that's less than solid, such as sand, it may begin to settle differently after the cut.

In a multi-floor building, cutting into a slab on the second, third, fourth levels to run plumbing beneath the floor would be a huge no-no. That's why commercial renovation projects that require additional plumbing will typically use external soil stacks, putting the external plumbing tree on the outside of the building. Well, if you shouldn't cut into any of the upper levels of a building, why would you think you could safely cut into the first-level — the slab on which everything else sits?

- Cutting concrete is unpredictable: Installers don't always know the depth of the concrete, whether it sits on rocks or a ledge, or whether it contains rebar or tension cables. You can cause major damage if you accidentally cut one of those cables. Professional contractors understand this hazard and never begin cutting without first using an x-ray machine to determine the positioning of the cables. But even then, the slab was most likely designed to use a certain number of cables with a certain amount of concrete. If you begin removing chunks of concrete, those tension wires may begin pulling in a different direction, creating integrity problems and causing delays and extra expense.

- Cutting concrete is seldom, if ever, perfect: I may try as hard as I can to cut a perfect circle, square or rectangle into a floor for burying a sewage ejector and its waste-storage basin — but no way. That "perfect" shape will inevitably crack on the edges and fray outward in unintended directions, often well beyond the hole I am digging. And once a stress crack is created, how far down does it extend into the footing or into the walls?

- Cutting concrete creates leaks and seepage: Once a stress crack is generated, radon and ground-water penetration is a major issue, with the latter bringing unwanted moisture and mold problems as well. You don't need a major flood to trigger these hazards.

A higher-than-usual water table because of extended wet weather, such as in the spring, could be the culprit. Even if the cracks and seepage are not large enough to jeopardize the foundation, enough wetness could infiltrate to ruin walls, floors and furnishings in a finished living area — including that beautiful new bathroom that necessitated digging through the concrete in the first place.

OTHER SERIOUS CONCERNS

Of course, there are other negatives you should carefully consider:

- Dust, dust and more dust: Breaking through concrete generates an extraordinary amount of noise and dust. Happily, the noise stops when the jackhammers and saws shut down, and the workers finish their back-breaking job of hauling concrete chunks off the premises. But the dust doesn't fade nearly so quickly. That's because it is not conventional household dust, but a thick particulate that inevitably gets into everything, including the central air system, which means it can be around for a long time if not properly handled. I have heard of homeowners finding pockets of concrete dust years after a project finished.

Obviously, this dust is not something you would want your family breathing for any length of time. (You might think the same for your own crews.) Anyone contemplating this type of work must seriously consider what sort of air-purification process is needed to remove all the dust from the premises.

- Cost factors: Last, but certainly not least, there's the problem we mentioned at the outset of this article, the one that often proves to be the biggest deal-breaker of all: cost. The actual expense of cutting concrete depends on the size and complexity of the job, as well as local labor availability and rates. In some parts of the nation, the per-foot rate may be a few hundred dollars; in others, \$1,000 or more.

Seeing these costs, some plumbers outsource the work and are content to make little or no markup on their sub's charges. Others, preferring to keep the job in house, absorb the time and cost of renting the cutting and hammering tools and lugging them on and off the job site; or, if they choose to buy, the cost of maintaining and replacing these tools, as well as depreciation.



Choose Saniflo's above-the-floor systems and protect your lifelong investment!

FAQ's

MACERATING TOILETS AND DRAIN WATER PUMPS

WHAT IS A MACERATOR?

To "macerate" is to soften, to break in pieces. Our macerating systems use a rotating cutting blade to liquefy human waste and toilet paper. When mixed with flushing water the waste is pumped into a sanitary sewer as a fine slurry.

WHERE CAN I USE MACERATING SYSTEMS?

These systems can be used anywhere extra sanitary facilities are needed or wanted. Extra bathrooms can be installed in basements, cottages, hotels, motels, etc.

IS SANIFLO EXPENSIVE?

The greatly reduced labor costs and the incredible flexibility makes Saniflo an economical and viable alternative when gravity flow systems cannot be installed.

CAN I ALSO INSTALL A SHOWER OR BATHTUB?

When installing a bathtub a platform of 2 x 8 inch is needed to allow for the installation of a P-Trap and pipe with some gravity flow towards the macerating unit.

DO I NEED TO BREAK UP THE FLOOR TO INSTALL THE MACERATING SYSTEM?

No, Saniflo can easily be installed on top of any finished floor, which totally eliminates the need to dig up a floor as present methods using a sump and sewage ejector pump requires.

Additionally, there is no need to leave an accessible space, as is the case with an in-floor sump system.

WHERE IS THE WASTE DISCHARGED?

The waste is pumped into a sewer system, septic tank or holding tank by means of a proper waste pipe system that complies with applicable codes.

CAN I DISCHARGE THE WASTE BY MEANS OF UPWARD SLOPES?

The best method to install a discharge pipe is to rise vertically at the unit as high as necessary and from that point slope down at a fall of ¼ inch per linear foot to the point of discharge.

CAN A WASHING MACHINE BE DISCHARGED INTO THE SANIPLUS?

Our Saniswift, Sanivite, Sanibest Pro, Sanigrind Pro, Sanicubic 1 and Sanicubic 2 units are designed for this type of application. The washing machine must be drained into a laundry tub or sink first if using any of these units.

CAN I DISCHARGE A KITCHEN SINK INTO A MACERATING SYSTEM?

No, the greases and larger food particles associated with kitchen sinks would clog the

smaller diameter pipe and eventually create a problem. The Sanivite and Saniswift are designed for this purpose.

DO I NEED TO INSTALL A P-TRAP IN VANITIES, BATHTUBS, AND SHOWERS?

Yes, even though macerating systems have built-in mechanical traps most plumbing codes require a regular P-Trap to be installed. It is also necessary to prevent odors and sewer gases from escaping into the room.

WILL I VOID THE WARRANTY, IF I INSTALL THE SYSTEM MYSELF?

No, but since proper building plumbing and electrical codes must be followed, we suggest that the system is installed by a trade professional.

CAN THE WARRANTY BE VOIDED?

Yes, when any foreign objects are found in the macerating unit that has to be retrieved by a plumbing or service person. Also, by pouring automotive anti-freeze, solvents, paints, etc., into the system, or by opening the motor or pump of the macerating unit.

DO MACERATING SYSTEMS, DRAIN WATER PUMPS AND FIXTURES NEED TO BE VENTED?

All macerators and drain water pumps have been designed with a vent connection on the lid. All plumbing codes require connection to a vent system. Please note that the vent system should be a two-way air vent. The use of mechanical vents, air admittance valves or similar devices are not permitted as these are considered one-way vent systems. The Sanicompact and Sanistar units are "forced mains" and they do not need to be vented.

HOW MUCH WATER DOES THE SYSTEM USE?

All models in the Saniflo line are low consumption type water closets. The Sanitop/Saniplus/Saniaccess3/Sanibest Pro uses 1.28 gallons (4.8 liters) of water per flush. The Sanistar and the Sanicompact48 are dual flush systems as they use 1.28 gpf (4.8 lpf) and 1 gpf (3.8 lpf). This compares very favorably with older style water closets that may use up to 3.5 gallons (30 liters) of water per flush.

WHAT IS THE DISCHARGE CAPACITY?

Depending upon the discharge installation, the Saniplus/Sanibest Pro/Saniaccess3 can pump up to 27 gallons per minute and the Sanivite can pump up to 18 gallons per minute. The Sanicompact/Sanistar cannot pump more than 1.28 gallons at a time as it is an electrically timed system.

WHAT ARE THE NEW FEATURES OF THE SANIACCESS3?

Two service panels provide direct access to different segments of the macerating unit, allowing easy inspection and servicing of all major components. Through one opening, one can access the electrical components such as the level sensor mechanism of the pump. The second panel provides ready access to the macerating blades for easy removal of large objects.

HOW LONG WILL MACERATING SYSTEMS LAST?

A nationally recognized laboratory tested the Saniplus system for 50,000 cycles, e.g. flushed 10 x a day = 3650 x a year = 13.69 years lifetime. As this is a standard test, it was stopped after 50,000 cycles; therefore the Saniplus may last much longer.

SHOULD I WINTERIZE THE SYSTEM?

When installed in areas that are prone to freezing, all parts need to be properly drained, e.g. the macerating unit, the discharge piping, the tank, the supply pipe etc. Alternatively, plumbers anti freeze may be poured into the system until the macerating systems start up.

DOES THE SYSTEM NEED MAINTENANCE?

No, the motor is filled with oil and sealed for life.

WHERE CAN WE PURCHASE PARTS?

Parts can be purchased through our Technical Department by calling toll free US: 800-571-8191, Canada: 800-363-5874 and from our website at www.saniflo.com

WHAT WARRANTY IS PROVIDED BY SANIFLO?

The pump units have a 2-year warranty while the porcelain (toilet bowl and tank) have a 1-year warranty from date of purchase.

WHAT ARE THE UPGRADES ON THE NEW SANIBEST PRO AND SANIGRIND PRO?

The basics were kept the same for these two models. The motor for both systems was upgraded to a 1 HP motor – 25% more power than the previous generation. Another unique advantage is the removable service panel on the top of the macerator which provides direct access to the main pump components.

DOES SANIFLO OFFER OTHER TOILET DESIGNS?

We offer toilets with elongated bowls for greater comfort. These toilets are also ADA compliant and measure 16¾ inches in height.



Distance Up Distance Long Pipe Size Max. Temp.

FULL BATHROOMS

Model	✓	✓	✓	✓	✓	✓	✓	Distance Up	Distance Long	Pipe Size	Max. Temp.
SANIACCESS3	✓	✓	✓	✓				15' (4.6m)	150' (50m)	¾" (20mm)	104°F (40°C)
SANIPLUS	✓	✓	✓	✓				15' (4.6m)	150' (50m)	¾" (20mm)	104°F (40°C)
SANIBEST Pro	✓	✓	✓	✓	✓		✓	25' (7.62m)	150' (50m)	¾" (20mm)	104°F (40°C)
SANIGRIND Pro	✓	✓	✓	✓	✓		✓	25' (7.62m)	150' (50m)	¾" (20mm)	104°F (40°C)
SANIPACK	✓	✓	✓					15' (4.6m)	150' (50m)	¾" (20mm)	104°F (40°C)

HALF BATHROOMS

Model	✓	✓						Distance Up	Distance Long	Pipe Size	Max. Temp.
SANITOP	✓	✓						12' (3.7m)	120' (37m)	¾" (20mm)	104°F (40°C)
SANICOMPACT	✓	✓						9' (3m)	120' (33m)	1" (25mm)	95°F (35°C)
SANISTAR	✓	✓						9' (3m)	100' (33m)	1" (25mm)	95°F (35°C)

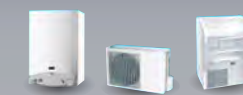
ENTIRE HOME AND BUILDINGS

Model	✓	✓	✓	✓	✓	✓	✓	Distance Up	Distance Long	Pipe Size	Max. Temp.
SANICUBIC 1	✓	✓	✓	✓	✓	✓	✓	36' (11m)	328' (100m)	1½" (38mm)	158°F (70°C)
SANICUBIC 2	✓	✓	✓	✓	✓	✓	✓	36' (11m)	328' (100m)	1½" (38mm)	158°F (70°C)

DRAIN AND CONDENSATE PUMPS

Model	✓	✓	✓	✓	✓	✓	✓	Distance Up	Distance Long	Pipe Size	Max. Temp.
SANIVITE	✓	✓	✓	✓	✓	✓	✓	16' (5m)	150' (50m)	1" (25mm)	140°F (60°C)
SANISWIFT	✓	✓		✓	✓	✓	✓	14' (4.3m)	140' (43m)	1" (25mm)	140°F (60°C)
SANISHOWER	✓	✓					✓	12' (3.7m)	100' (33m)	¾" (20mm)	104°F (40°C)
SANICONDENS								15' (4.6m)	150' (50m)	¾" (10mm)	160°F (70°C)
SANICONDENS BEST								15' (4.6m)	150' (50m)	¾" (10mm)	160°F (70°C)

These unit can be used for HVAC applications, boilers, air conditioners, etc.



SOME POSSIBLE SITUATIONS WHERE OUR SYSTEMS CAN BE INSTALLED:

LOFT/ATTIC | UPPER FLOOR | GROUND FLOOR | BASEMENT
GARAGE | CABINS | POOL HOUSE | SLAB CONSTRUCTIONS

ALL PRODUCTS COMPLY WITH NORTH AMERICAN STANDARDS

With 57 years of experience and knowledge helping people around the world,
 Saniflo is the company you can trust. Our reputation in providing high quality
 products has been put to the test more than 7 million times in some of the world's
 most recognized buildings. We pledge that same quality for your home.



- | | | | |
|--|--|--|--|
|  Groupe SFA International , France |  SFA SANIBROY , Germany |  SFA GRUPO , Spain |  SANIFLO , New Zealand |
|  SANIFLO AB , Sweden |  SFA BENELUX BV , Holland |  SFA , Portugal |  SANIFLO , Australia |
|  SANIFLO , England |  SFA SANIRISH , Ireland |  SFA SANIFLO SRL , Romania |  SFA Sanihydro , Turkey |
|  SFA , Poland |  SFA SANIFLO INC. , USA |  SANIFLO , Austria |  SFA , Japan |
|  SFA , Russia |  SFA SANIFLO INC. , Canada |  SFA SANIBROY , Czech Republic |  SFA , China |
|  SFA , Brazil Ltda |  SFA SANITRIT , Italy |  SFA Sanibroy , Switzerland |  SANIFLO , S. Africa (PTY) LTD |

SANIFLO®

A Group SFA Company

U.S. -105 Newfield Avenue, Suite B,
 Edison, NJ 08837
 Toll Free: 1-800-571-8191

www.saniflo.com

Canada -1 - 685 Speedvale Avenue West,
 Guelph, ON N1K 1E6
 Toll Free: 1-800-363-5874

www.saniflo.ca