

## SCHAEFER BRUSHES



### REFRIGERATION FITTING BRUSHES

#### PREMIUM BRUSH - 900 SERIES STAINLESS STEEL WIRE

The highest quality fitting brush, double spiral 4-ply wire construction. Solid plastic hand-fitting handle with convenient hole for hanging. Individual package.  
**Order part #'s on page 32 of price list.**



OD REFRIGERATION SIZES				OD REFRIGERATION SIZES			
PART #	SIZE	PACK	WEIGHT	PART #	SIZE	PACK	WEIGHT
00924-1	1/4"	1	.04	00931-1	1-1/8"	1	.08
00925-1	3/8"	1	.08	00932-1	1-3/8"	1	.08
00926-1	1/2"	1	.08	00933-1	1-1/2"	1	.08
00927-1	5/8"	1	.08	00934-1	1-5/8"	1	.08
00928-1	3/4"	1	.08	00935-1	2-1/8"	1	.08
00929-1	7/8"	1	.08	00936-1	2-3/8"	1	.10
00930-1	1"	1	.08	00937-1	2-5/8"	1	.10

### PLUMBING FITTING BRUSHES

#### PREMIUM BRUSH - 900 SERIES STAINLESS STEEL WIRE

The highest quality fitting brush, double spiral 4-ply wire construction. Solid plastic hand-fitting handle with convenient hole for hanging. Individual package.  
**Order part #'s on page 32 of price list.**



OD REFRIGERATION SIZES				OD REFRIGERATION SIZES			
PART #	SIZE	PACK	WEIGHT	PART #	SIZE	PACK	WEIGHT
00943-1	1/8"	1	.04	00949-1	1"	1	.10
00944-1	1/4"	1	.08	00950-1	1-1/4"	1	.10
00945-1	3/8"	1	.08	00951-1	1-1/2"	1	.12
00946-1	1/2"	1	.10	00952-1	2"	1	.12
00947-1	5/8"	1	.10	00953-1	2-1/4"	1	.14
00948-1	3/4"	1	.110	00954-1	2-1/2"	1	.14

#### FITTING BRUSH SIZES & ACTUAL BRUSH DIAMETERS

*Fitting brushes are referred to by the size fitting they are designed to clean.*

PLUMBING ID BRUSH AND FITTING SIZE	REFRIGERATION OD BRUSH AND FITTING SIZE	ACTUAL BRUSH DIAMETER	PLUMBING ID BRUSH AND FITTING SIZE	REFRIGERATION OD BRUSH AND FITTING SIZE	ACTUAL BRUSH DIAMETER
1/8"	1/4"	9/32"	1"	1-1/8"	1-3/16"
1/4"	3/8"	7/16"	1-1/4"	1-3/8"	1-7/16"
3/8"	1/2"	9/16"	1-1/2"	1-5/8"	1-3/4"
1/2"	5/8"	11/16"	2"	2-1/8"	2-1/4"
5/8"	3/4"	13/16"	2-1/4"	2-3/8"	2-1/2"
3/4"	7/8"	15/16"	2-1/2"	2-5/8"	2-3/4"

## SCHAEFER BRUSHES



### EXCLUSIVE! 2-IN-1 TOOL

#### 2-IN-1 TOOL



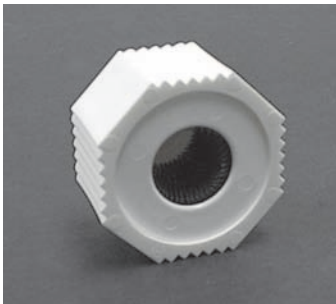
A combination tool that fits your hand comfortably and really works. One end cleans the fitting; the other cleans the tube.

Order part #'s on page 32 of price list.

PART #	PLBG. ID SIZE	REFRIG. OD SIZE	PACK	WEIGHT
00996-12	1/2"	5/8"	12	1.44
00998-12	3/4"	7/8"	12	1.44
00996-100	1/2"	5/8"	100	12
00998-100	3/4"	7/8"	100	12

### OUTSIDE TUBE BRUSHES

#### OUTSIDE TUBE CLEANING BRUSH



Tough molded plastic holder with comfortable sure grip design and high carbon steel bristles. Packed 6 per box.

Order part #'s on page 33 of price list.

PART #	PLBG. ID SIZE	REFRIG. OD SIZE	PACK	WGT	PART #	PLBG. ID SIZE	REFRIG. OD SIZE	PACK	WGT
00963-6	1/8"	1/4"	6	.24	00967-6	3/4"	5/8"	6	.48
00964-6	1/4"	3/8"	6	.24	00968-6	7/8"	7/8"	6	.48
00965-6	3/8"	1/2"	6	.24	00969-6	1"	5/8"	6	.48
00966-6	1/2"	5/8"	6	.24	00970-6	1-1/8"	7/8"	6	.48

### TUBE BRUSHES

#### NYLON TUBE BRUSHES

Order part #'s on page 33 of price list.



PART #	DIA.X BRUSH PART	OAL	PACK	WGT	PART #	DIA.X BRUSH PART	OAL	PACK	WGT
14504	1/4" x 2"	6-1/2"	12	.7	14529	3/4" x 3"	9"	12	1.1
14506	1/4" x 2"	15"	12	.7	14530	3/4" x 3"	15"	12	1.3
14509	5/16" x 2"	15"	12	.8	14533	3/4" x 3"	30"	12	3.0
14510	3/8" x 2"	6-1/2"	12	.7	14539	1" x 4"	15"	12	1.5
14512	3/8" x 2"	15"	12	1.1	14547	1-1/4" x 4"	15"	12	1.5
14515	7/16" x 2"	15"	12	1.1	14565	1-1/2" x 4"	15"	12	1.8
14517	1/2" x 3"	9"	12	.9	14567	1-1/2" x 4"	36"	12	3.5
14518	1/2" x 3"	15"	12	1.1	14573	1-3/4" x 4"	15"	12	1.8
14520	1/2" x 3"	30"	12	3.0	14582	2" x 4"	15"	12	2.0
14524	5/8" x 3"	15"	12	1.1	14588	2-1/4" x 4"	36"	12	3.5

#### NATURAL BRISTLE OR HAIR

Order part #'s on page 33 of price list.



PART #	DIA.X BRUSH PART	OAL	PACK	WGT	PART #	DIA.X BRUSH PART	OAL	PACK	WGT
10209	1/4" x 2"	6-1/2"	12	.8	10212	3/4" x 3"	9"	12	1.1
10210	3/8" x 2"	6-1/2"	12	.8	10214	3/4" x 3"	12"	12	1.2
10220	3/8" x 2"	9"	12	.9	10213	1" x 4"	12"	12	1.3
10211	1/2" x 3"	9"	12	.8	10216	1" x 4"	18"	12	1.8
10221	1/2" x 3"	12"	12	1.1	10217	1-1/4" x 4"	18"	12	1.9
10222	1/2" x 3"	18"	12	1.2	10218	1-1/2" x 4"	18"	12	2.0
10223	1/2" x 3"	24"	12	1.3	10225	1-3/4" x 4"	18"	12	2.1
10224	1/2" x 3"	36"	12	2.3	10226	2" x 4"	18"	12	2.3

# SCHAEFER BRUSHES

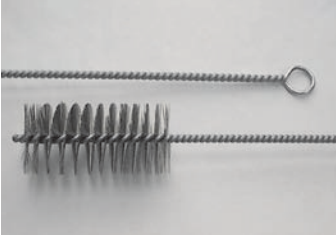


## LONG HANDLE WIRE TUBE BRUSHES

### STAINLESS STEEL SINGLE SPIRAL - 144 SERIES

3' brush part with long handle, filled with medium stiff wire.

Order part #'s on page 33-34 of price list.



EXACT					EXACT				
PART #	DIA.	OAL	PACK	WEIGHT	PART #	DIA.	OAL	PACK	WEIGHT
14402	1/4"	15"	1	.04	14442	1/4"	27"	1	.08
14404	3/8"	15"	1	.06	14444	3/8"	27"	1	.10
14406	1/2"	15"	1	.08	14446	1/2"	27"	1	.14
14408	5/8"	15"	1	.10	14448	5/8"	27"	1	.18
14410	3/4"	15"	1	.12	14450	3/4"	27"	1	.18
14412	7/8"	15"	1	.12	14452	7/8"	27"	1	.19
14414	1"	15"	1	.12	14454	1"	27"	1	.19
14416	1-1/4"	15"	1	.12	14456	1-1/4"	27"	1	.19
14418	1-1/2"	15"	1	.13	14458	1-1/2"	27"	1	.20

## LARGE DIAMETER TUBE BRUSHES

### BRASS LARGE DIAMETER TUBE BRUSHES

Double stem with 1/4" male pipe thread.

Order part #'s on page 34 of price list.



BRUSH					BRUSH				
PART #	DIA.	LGTH	PACK	WGT	PART #	DIA.	LGTH	PACK	WGT
43636	1-1/4"	4-1/2"	1	.30	43653	2-3/4"	4-1/2"	1	.42
43639	1-1/2"	4-1/2"	1	.32	43656	3"	4-1/2"	1	.44
43642	1-3/4"	4-1/2"	1	.32	43658	3-1/4"	4-1/2"	1	.44
43645	2"	4-1/2"	1	.32	43660	3-1/2"	4-1/2"	1	.54
43648	2-1/4"	4-1/2"	1	.36	43662	3-3/4"	4-1/2"	1	.56
43651	2-1/2"	4-1/2"	1	.40	43664	4"	4-1/2"	1	.56

### NYLON LARGE DIAMETER TUBE BRUSHES

Single stem with 1/4" male pipe thread.

Order part #'s on page 34 of price list.



BRUSH					BRUSH				
PART #	DIA.	LGTH	PACK	WGT	PART #	DIA.	LGTH	PACK	WGT
43736	1-1/4"	5"	1	.18	43753	2-3/4"	5"	1	.32
43739	1-1/2"	5"	1	.24	43756	3"	5"	1	.32
43742	1-3/4"	5"	1	.24	43758	3-1/4"	5"	1	.34
43745	2"	5"	1	.26	43760	3-1/2"	5"	1	.38
43748	2-1/4"	5"	1	.26	43762	3-3/4"	5"	1	.44
43751	2-1/2"	5"	1	.32	43764	4"	5"	1	.44

# SCHAEFER BRUSHES



## DUSTING & CLEANING BRUSHES

### REFRIGERATOR COIL CLEANING BRUSHES

Used to clean refrigerator coils, fan blades and areas under and behind appliances.

Order part #'s on page 34 of price list.



PART #	MATERIAL	STEM DIA.	DESCRIPTION	PK.	WT.
00405	Bristle	.200	3/4" & 1-1/2" x 12" BR. 15" Wood HDL. 28" O.A.L.	36	8.2
00415	Bristle	.200	Same as 00405 in single box	1	.44
50405	Bristle	.200	Same as 00405 on 4-color card	10	3.3
00406	W. Poly	.225	3/4" & 1-1/2" x 12" BR. 4-1/2" Wood HDL. 28" O.A.L.	36	9.8
00416	W. Poly	.225	Same as 00406 in single box	1	.48
00408	Bristle	.200	3/4" to 1-1/2" taper x 12" BR. 4-1/2" Wood HDL. 27" O.A.L.	36	9.2
00402	Bristle	.200	2" x 6" BR. x 24" O.A.L.	36	8.2
00403	Bk. Poly	.225	3/4" to 1-1/2" taper x 12" BR. 2-1/4" x 7" Br. x 24" O.A.L.	36	9.2

### DUCT CLEANING BRUSH

7" long brush part with twisted wire stem and plastic, or wood handle.

Order part #'s on page 35 of price list.



PART #	MATERIAL	BRUSH DIA.	OVERALL LENGTH	PACK	WEIGHT
76200	Cr. Brass Wire	2-1/8"	48"	1	.44
76210	Stainless Steel	2-1/8"	48"	1	.50
76220	Black Pat. Fibre	2-1/8"	48"	1	.40

### FIBRE/HAIR MIX FURNACE & BOILER BRUSHES – 7624 SERIES

Extra heavy fill, 6" long brush part with twisted wire handle and large loop end.

Order part #'s on page 35 of price list.



PART #	BRUSH DIA.	OVERALL LENGTH	PACK	WEIGHT
76243	3"	27"	1	.34
76245	2"	42"	1	.44

### RADIATOR OR REFRIGERATOR BRUSHES

Black natural bristle, twisted in wire with loop end.

Order part #'s on page 35 of price list.



PART #	STEM DIA.	BRUSH DIA.	OVERALL LENGTH	BRUSH LENGTH	PACK	WEIGHT
00450	.200	1/2" to 1"	36"	7"	12	3.36
00442	.225	1" to 2"	42"	7"	12	4.56

# SCHAEFER BRUSHES



## DUSTING & CLEANING BRUSHES

### RADIATOR CLEANING BRUSH



Twisted in wire with plastic handle at end.  
Order part #'s on page 35 of price list.

PART #	MATERIAL	BRUSH LENGTH	BRUSH DIA.	BRUSH OVERALL LENGTH	PACK	WEIGHT
76221	Bristle or Hair	7"	2"	27"	1	.22
76324	Black Horsehair	7"	2-1/2"	27"	1	.22
76524	HH/Poly Mix	7"	2-1/2"	27"	1	.22



### LONG WOOD HANDLE DUSTING BRUSH W/FLARED TIP

One row, curved lacquered wood handle.  
Order part #'s on page 35 of price list.

PART #	MATERIAL	BRUSH LENGTH	BRUSH TRIM	OVERALL LENGTH	PACK	WEIGHT
76026	Horsehair	10"	2-1/4"	24"	1	.26

## CONDENSER TUBE BRUSHES

### NYLON SINGLE SPIRAL - 437 & 937 SERIES



Single spiral/single stem construction recommended for cleaning all tubes where deposits are light. 1/4" and 5/16" dia. brushes with female couplings have 8-32 threads, while 3/8" thru 1" dia. have 12-24 threads. 1/4", 5/16", and 3/8" dia. brushes with male couplings have 8-32 threads, while 7/16" thru 1" dia. have 1/4-28 threads.

Order part #'s on page 35 of price list.



BRUSH DIA.	BRUSH LENGTH	FEMALE THREAD	FEMALE PART	MALE THREAD	MALE PART	PACK	WEIGHT
1/4"	3"	8-32	43702	8-32	93702	1	.04
5/16"	3"	8-32	43703	8-32	93703	1	.04
3/8"	4"	12-24	43704	8-32	93704	1	.08
7/16"	4"	12-24	43707	1/4-28	93707	1	.10
1/2"	4"	12-24	43710	1/4-28	93710	1	.10
9/16"	4"	12-24	43713	1/4-28	93713	1	.10
5/8"	4"	12-24	43716	1/4-28	93716	1	.10
11/16"	4"	12-24	43719	1/4-28	93719	1	.10
3/4"	4"	12-24	43722	1/4-28	93722	1	.10
13/16"	4"	12-24	43725	1/4-28	93725	1	.10
7/8"	4"	12-24	43728	1/4-28	93728	1	.10
15/16"	4"	12-24	43731	1/4-28	93731	1	.10
1"	4"	12-24	43733	1/4-28	93733	1	.10

# SCHAEFER BRUSHES



## CONDENSER TUBE BRUSHES

### BRASS SINGLE SPIRAL - 436 & 936 SERIES



Single spiral/double stem construction recommended for brass or copper tubes. 1/4" and 5/16" dia. brushes with female couplings have 8-32 threads, while 3/8" thru 1" dia. have 12-24 threads. 1/4", 5/16", and 3/8" dia. brushes with male couplings have 8-32 threads, while 7/16" thru 1" dia. have 1/4-28 threads.

Order part #'s on page 35-36 of price list.



BRUSH DIA.	BRUSH LENGTH	FEMALE THREAD	FEMALE PART	MALE THREAD	MALE PART	PACK	WEIGHT
1/4"	3"	8-32	43602	8-32	93602	1	.06
5/16"	3"	8-32	43603	8-32	93603	1	.06
3/8"	4"	12-24	43604	8-32	93604	1	.10
7/16"	4"	12-24	43607	1/4-28	93607	1	.10
1/2"	4"	12-24	43610	1/4-28	93610	1	.10
9/16"	4"	12-24	43613	1/4-28	93613	1	.14
5/8"	4"	12-24	43616	1/4-28	93616	1	.14
11/16"	4"	12-24	43619	1/4-28	93619	1	.14
3/4"	4"	12-24	43622	1/4-28	93622	1	.14
13/16"	4"	12-24	43625	1/4-28	93625	1	.16
7/8"	4"	12-24	43628	1/4-28	93628	1	.16
15/16"	4"	12-24	43631	1/4-28	93631	1	.16
1"	4"	12-24	43633	1/4-28	93633	1	.16

### STAINLESS STEEL SINGLE SPIRAL - 435 & 935 SERIES



Single spiral/double stem construction recommended for stainless steel tubes. 1/4" and 5/16" dia. brushes with female couplings have 8-32 threads, while 3/8" thru 1" dia. have 12-24 threads. 1/4", 5/16", and 3/8" dia. brushes with male couplings have 8-32 threads, while 7/16" thru 1" dia. have 1/4-28 threads.

Order part #'s on page 36 of price list.



BRUSH DIA.	BRUSH LENGTH	FEMALE THREAD	FEMALE PART	MALE THREAD	MALE PART	PACK	WEIGHT
1/4"	3"	8-32	43502	8-32	93502	1	.02
5/16"	3"	8-32	43503	8-32	93503	1	.06
3/8"	4"	12-24	43504	8-32	93504	1	.10
7/16"	4"	12-24	43507	1/4-28	93507	1	.10
1/2"	4"	12-24	43510	1/4-28	93510	1	.10
9/16"	4"	12-24	43513	1/4-28	93513	1	.10
5/8"	4"	12-24	43516	1/4-28	93516	1	.14
11/16"	4"	12-24	43519	1/4-28	93519	1	.14
3/4"	4"	12-24	43522	1/4-28	93522	1	.14
13/16"	4"	12-24	43525	1/4-28	93525	1	.14
7/8"	4"	12-24	43528	1/4-28	93528	1	.14
15/16"	4"	12-24	43531	1/4-28	93531	1	.16
1"	4"	12-24	43533	1/4-28	93533	1	.16

## SCHAEFER BRUSHES



### ACID & DOPE BRUSHES

#### TIN HANDLE ACID BRUSH

Selected horsehair bristles are pressed securely in tin handles. Sold in gross packs only.

Order part #'s on page 36 of price list.



PART #	BRUSH		HANDLE LENGTH	PACK	WEIGHT
	WIDTH	LENGTH			
10001	3/8"	5"	5"	144	2.14
10002	1/2"	5"	5"	144	2.64
10003	5/8"	5"	5"	144	3.30

#### WOOD HANDLE DOPE BRUSH

Selected horsehair bristles secured tightly in metal ferrule. Sold in packs of 36.

Order part #'s on page 36 of price list.



PART #	BRUSH WIDTH	OVERALL LENGTH	BRUSH MATERIAL	PACK	WEIGHT
10007	3/4"	7"	Horsehair	36	1.34

### CHIP BRUSHES

#### IMPORT WHITE BRISTLE CHIP

White Chinese bristle, metal ferrule. Plain sanded wood handle. Low priced economy import.

Order part #'s on page 36 of price list.



PART #	WIDTH	THICKNESS	TRIM	PACK	WEIGHT
67191	1/2"	1/4"	1-3/8"	36	.72
67192	1"	5/16"	1-5/8"	36	1.44
67193	1-1/2"	5/16"	1-5/8"	36	1.44
67194	2"	5/16"	1-5/8"	24	1.44
67195	2-1/2"	3/8"	1-5/8"	24	2.40
67196	3"	3/8"	1-5/8"	24	2.40
67197	4"	11/16"	1-5/8"	12	3.84

#### IMPORT BLACK BRISTLE CHIP

Black Chinese bristle in a chemical resistant plastic handle.

Order part #'s on page 36 of price list.



PART #	WIDTH	THICKNESS	TRIM	PACK	WEIGHT
67230	1/2"	1/4"	1-3/8"	1	.02
67231	1"	5/16"	1-5/8"	1	.04
67232	1-1/2"	5/16"	1-5/8"	1	.06
67233	2"	5/16"	1-5/8"	1	.06
67234	2-1/2"	3/8"	1-5/8"	1	.10
67235	3"	3/8"	1-5/8"	1	.10

## SCHAEFER BRUSHES



### CHIP BRUSHES

#### WIRE HANDLE CHIP

Ideal for cleaning rust, corrosion, etc. in high heat situations.

Order part #'s on page 36 of price list.

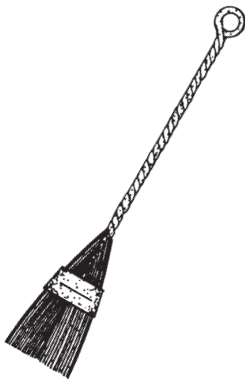


PART #	FILL	TRIM	OVERALL LENGTH	PACK	WEIGHT
81616	C. Steel	1-1/2"	5-1/2"	1	.10
81617	St. Steel	1-1/2"	5-1/2"	1	.10

#### FLAT OIL/CHIP BRUSH

Absorbent natural tampico or poly in a twisted wire handle with ring end. Overall length 8-1/4".

Order part #'s on page 37 of price list.



PART #	BRUSH MATERIAL	BRUSH WIDTH	BRUSH LENGTH	PACK	WEIGHT
24800	Tampico	2-1/4"	3"	1	.08
67118	Poly	2-1/4"	3"	1	.06

### WHISKS, DUSTERS & UPRIGHT BROOMS

#### CONDENSER FIN WHISK BRUSH

Plastic handle whisk for cleaning condenser fins and evaporators - A whisk with a hundred uses.

Order part #'s on page 37 of price list.



PART #	BRUSH WIDTH	TRIM	OVERALL LENGTH	PACK	WEIGHT
02026	3-1/8"	2-1/8"	7"	1	.04

#### BENCH DUSTER

Tough and durable brush available in tampico and horsehair.

Order part #'s on page 37 of price list.



PART #	MATERIAL	BRUSH FACE	OVERALL LENGTH	TRIM	PACK	WEIGHT
62034	Tampico	2" x 8"	14"	2-5/8"	1	.66



# SCHAEFER BRUSHES



## PAINT BRUSHES

### POLYESTER VARNISH BRUSH

Durable black polyester filament with a solvent resistant plastic handle.

Order part #'s on page 37 of price list.



PART #	WIDTH	THICKNESS	TRIM	PACK	WEIGHT
67240	1/2"	1/4"	1-5/8"	1	.02
67241	1"	5/16"	1-3/4"	1	.04
67242	1-1/2"	5/16"	1-3/4"	1	.06
67243	2"	5/16"	1-3/4"	1	.08
67244	2-1/2"	3/8"	2"	1	.10
67245	3"	3/8"	2"	1	.12

## PARTS CLEANING BRUSHES

### PARTS CLEANING BRUSH

Tampico or Poly fill in strong plastic handles, comes in standard or flow thru style.

Order part #'s on page 37 of price list.



PART #	BRUSH MATERIAL	OVERALL LENGTH	PACK	WEIGHT
25010	Poly	11-5/8"	1	.17
*25095	Poly	9"	1	.17
25013	Tampico	11-5/8"	1	.17
25015	All Poly	10-3/4"	1	.14

\*25095 is a Flow-Thru model.

## WIRE HAND BRUSHES

### SHOE HANDLE BRUSH

10" hardwood handle filled with tempered steel, stainless steel, bronze, brass, fibre or poly.

Order part #'s on page 37 of price list.



PART #	FILL	ROWS	FILL SIZE	BRUSH PART	PACK	WEIGHT
81232	T Steel	2 x 17	.012	5"	1	.20
81233	T Steel	3 x 17	.012	5"	1	.28
81234	T Steel	4 x 17	.012	5"	1	.38

# SCHAEFER BRUSHES



## WIRE HAND BRUSHES

### CURVED HANDLE BRUSHES

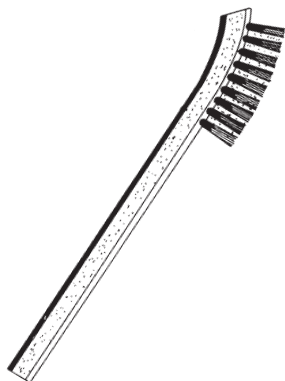


14" hardwood handle filled with tempered steel, stainless steel, bronze, brass, fibre or poly.

Order part #'s on page 37 of price list.

PART #	FILL	ROWS	FILL SIZE	BRUSH		WEIGHT
				PART	PACK	
*65341	Brass	4 x 17	.003	3-1/4"	1	.19
55104	Tampico	4 x 19	n/a	6-1/2"	1	.32
55105	Poly	4 x 19	.020	6-1/2"	1	.14
81008	T Steel	2 x 18	.012	6-1/2"	1	.22
81009	T Steel	3 x 19	.012	6-1/2"	1	.32
81010	T Steel	4 x 18	.012	6-1/2"	1	.42
81018	St. Steel	3 x 19	.012	6"	1	.22
81020	St. Steel	4 x 18	.012	6"	1	.38
81025	Bronze	4 x 18	.014	6"	1	.46
81044	Brass	3 x 19	.006	6"	1	.34
81045	Brass	4 x 19	.006	6"	1	.46

\*65341 has a straight, 8-3/4" long handle with a 3-1/4" brush part and 3/4" trim.



### STOVE & APPLIANCE BRUSH

2 X 9 rows, 5/8" trim. 8-5/8" long hardwood block with 2-7/8" long brush part.

Order part #'s on page 37 of price list.

PART #	FILL	ROWS	TRIM	OVERALL		WEIGHT
				LENGTH	PACK	
25301	St. Steel	2 x 9	5/8"	8-5/8"	1	.08
25302	Brass	2 x 9	5/8"	8-5/8"	1	.08

### DIE CAST BRUSHES

3 X 7 rows, 1/2" trim. 7" long plastic block with 1-1/2" long brush part.

Order part #'s on page 38 of price list.



PART #	FILL	ROWS	TRIM	OVERALL		WEIGHT
				LENGTH	PACK	
25404	St. Steel	3 x 7	1/2"	7"	1	.04
25405	Brass	3 x 7	1/2"	7"	1	.04
25406	Bronze	3 x 7	1/2"	7"	1	.04
25407	Nylon	3 x 7	1/2"	7"	1	.04

# SCHAEFER BRUSHES



## WIRE HAND BRUSHES

### WELDER'S BRUSH



3 X 7 rows, 1/2" trim. 8" long hardwood block with 1-1/2" long brush part.

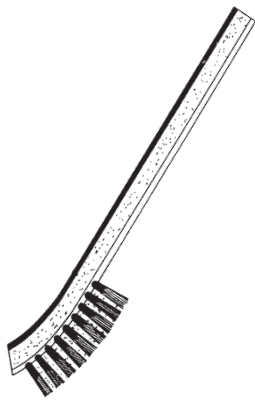
Order part #'s on page 38 of price list.

PART #	FILL	ROWS	TRIM	OVERALL LENGTH	PACK	WEIGHT
81002	St. Steel	3 x 7	1/2"	8"	1	.04
81003	Brass	3 x 7	1/2"	8"	1	.04
81005	Nylon	3 x 7	1/2"	8"	1	.04
81006	Horsehair	3 x 7	1/2"	8"	1	.04

### BRASS WIRE UTILITY BRUSHES

Curved hardwood block with crimped brass wire.

Order part #'s on page 38 of price list.



PART #	FILL	ROWS	TRIM	BRUSH PART	PACK	WEIGHT
27698	Brass	6 x 9	5/8"	1-1/4" x 2-1/4"	1	.18
27668	Brass	9 x 10	5/8"	2-1/4" x 3"	1	.36

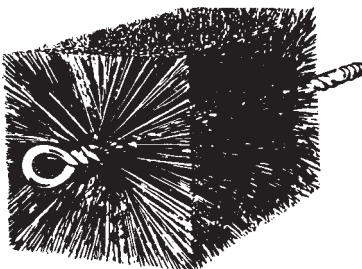
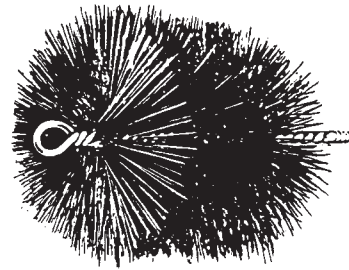
## PROFESSIONAL CHIMNEY BRUSHES

All our professional chimney brushes have extra heavy 1/2" dia. stems, constructed with four lengths of .162 dia. galvanized steel wire. Plated shaft with 3/8" male pipe threads are secured to the stems for easy coupling to our heaviest fiberglass rods.

### MASTER CLEAN

Fully filled with round tempered steel wire using double spiral construction. These premium brushes have been the choice of many professional chimney sweeps for years.

Order part #'s on pages 38 of price list.



ROUND				SQUARE			
PART #	SIZE	PACK	WEIGHT	PART #	SIZE	PACK	WEIGHT
33066	6"	1	1.90	33277	7"	1	2.10
33076	7"	1	2.00	33288	8"	1	2.10
33086	8"	1	2.10	33299	9"	1	2.60
33096	9"	1	2.50	33310	10"	1	2.80
33106	10"	1	2.60	33311	11"	1	2.90
33116	11"	1	2.70	33312	12"	1	3.10
33126	12"	1	2.80	33314	14"	1	3.40
33266	6"	1	2.00				

# SCHAEFER BRUSHES



## FLUE, DUCT & CHIMNEY RODS & HANDLES



### T-HANDLES

Order part #'s on page 38 of price list.

PART #	PIPE	PACK	WEIGHT
	THREAD		
30599	1/4"	1	.22
30600	3/8"	1	.24

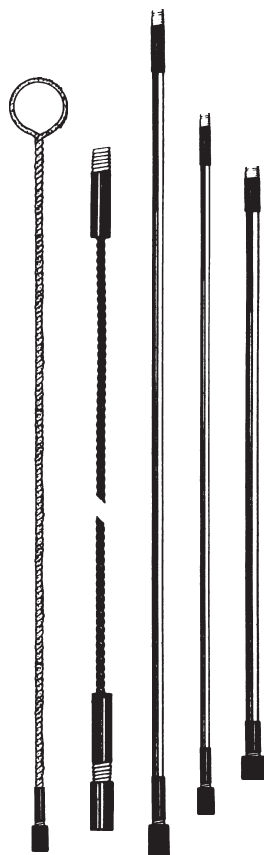


### FLUE BRUSH HANDLE

Semi-flexible, twisted galvanized wire with one female end and 1" ring at other end.

Order part #'s on page 38 of price list.

PART #	HANDLE LENGTH	PACK	WEIGHT
30328	3"	1	.56
30438	4"	1	.70
30548	5"	1	.86
30658	6"	1	1.06



### FIBERGLASS RODS

Strong extruded fiberglass rods in a variety of diameters provide the proper stiffness for most jobs. We recommend using these nonconducting fiberglass rods whenever possible.

Order part #'s on page 38 of price list.

PART #	DIA.	LENGTH	PIPE THREAD	PACK	WEIGHT
30664	.350	4'	1/4"	1	.42
30666	.350	6'	1/4"	1	.68
36048	.440	4'	3/8"	1	.66
36072	.440	6'	3/8"	1	.92
30660	.480	6'	3/8"	1	1.24

### EXTENSION HANDLES

Semi-flexible, twisted galvanized wire with female one end and male other.

Order part #'s on page 39 of price list.

PART #	HANDLE LENGTH	PACK	WEIGHT
31438	4'	1	.78
31448	5'	1	.92
31458	6'	1	1.04

# SCHAEFER BRUSHES



## FLUE BRUSHES

### TEMPERED WIRE - SINGLE SPIRAL

4-1/2" long tempered wire brush part, 1/4" male pipe thread.

Order part #'s on page 39 of price list.



PART #	FLUE SIZE	BRUSH DIA.	PK.	WT.	PART #	FLUE SIZE	BRUSH DIA.	PK.	WT.
43206	1"	3/4"	1	.28	43224	2-3/4"	2-1/2"	1	.42
43208	1-1/4"	1"	1	.30	43226	3"	2-3/4"	1	.44
43212	1-1/2"	1-1/4"	1	.32	43228	3-1/4"	3"	1	.46
43214	1-3/4"	1-1/2"	1	.34	43232	3-1/2"	3-1/4"	1	.48
43216	2"	1-3/4"	1	.36	43234	3-3/4"	3-1/2"	1	.50
43218	2-1/4"	2"	1	.38	43236	4"	3-3/4"	1	.52
43222	2-1/2"	2-1/4"	1	.40	43238	4-1/4"	4"	1	.54

### TEMPERED WIRE - DOUBLE SPIRAL

4-1/2" long tempered wire brush part, 1/4" male pipe thread. Brushes are individually boxed.

Order part #'s on page 39 of price list.



PART #	FLUE SIZE	BRUSH DIA.	PK.	WT.	PART #	FLUE SIZE	BRUSH DIA.	PK.	WT.
43306	1"	3/4"	1	.30	43324	2-3/4"	2-1/2"	1	.44
43308	1-1/4"	1"	1	.32	43326	3"	2-3/4"	1	.46
43312	1-1/2"	1-1/4"	1	.34	43328	3-1/4"	3"	1	.48
43314	1-3/4"	1-1/2"	1	.36	43332	3-1/2"	3-1/4"	1	.50
43316	2"	1-3/4"	1	.38	43334	3-3/4"	3-1/2"	1	.52
43318	2-1/4"	2"	1	.40	43336	4"	3-3/4"	1	.54
43322	2-1/2"	2-1/4"	1	.42	43338	4-1/4"	4"	1	.56

### STAINLESS STEEL - SINGLE SPIRAL FLUE BRUSHES

4-1/2" long brush part, 1/4" male pipe thread. Brushes are individually boxed.

Order part #'s on page 39 of price list.



PART #	FLUE SIZE	BRUSH DIA.	PK.	WT.	PART #	FLUE SIZE	BRUSH DIA.	PK.	WT.
43536	1-1/2"	1-1/4"	1	.36	43559	3-1/2"	3-1/4"	1	.52
43539	1-3/4"	1-1/2"	1	.38	43562	3-3/4"	3-1/2"	1	.54
43542	2"	1-3/4"	1	.40	43565	4"	3-3/4"	1	.56
43545	2-1/4"	2"	1	.42	43568	4-1/4"	4"	1	.58
43548	2-1/2"	2-1/4"	1	.44	43571	4-1/2"	4-1/4"	1	.60
43551	2-3/4"	2-1/2"	1	.46	43573	4-3/4"	4-1/2"	1	.62
43553	3"	2-3/4"	1	.48	43576	5"	4-3/4"	1	.64
43556	3-1/4"	3"	1	.50	43579	5-1/4"	5"	1	.66

# SCHAEFER BRUSHES



## BOILER BRUSHES

### FLAT BAFFLE BOILER BRUSH

Double spiral, black oil tempered wire brush part with 1/4" male pipe thread. Brushes are individually boxed.

Order part #'s on page 40 of price list.



PART #	BRUSH SIZE	BRUSH LENGTH	PK.	WT.
41218	1"	4-1/2"	1	.16
41228	2"	4-1/2"	1	.30
41238	3"	4-1/2"	1	.38
41248	4"	4-1/2"	1	.44

### ORIGINAL COLUMBIA BOILER BRUSH

Bristles stick out in all directions and are rough cut to a rectangular shape, approximately 1/2" x 1". Much lighter fill than the flat style.

Order part #'s on page 40 of price list.



PART #	BRUSH SIZE	HANDLE LENGTH	PACK WEIGHT
46328	1/2" x 1" x 4"	3'	1 .36
46348	1/2" x 1" x 4"	4'	1 .46

### FLAT STYLE COLUMBIA BOILER BRUSH

Bristles stick out to the 1" dimension as round brush is flattened after being made.

Order part #'s on page 40 of price list.



PART #	BRUSH SIZE	OVERALL LENGTH	PACK WEIGHT
46302	1/2" x 1" x 4-1/2"	27"	1 .41
46304	1/2" x 1" x 4-1/2"	48"	1 .72

### WEILER MCLAIN BOILER BRUSH

1-1/2" x 1-1/8" x 4" oval shaped brush with crimped carbon steel or soft bristle. Long twisted wire handles with 1" ring end.

Order part #'s on page 40 of price list.



PART #	MATERIAL	HANDLE DIA.	O.A.L.	PK.	WT.
14465	Crimped Wire	.20	30"	1	.32
14466*	Crimped Wire	.25	30"	1	.34
14467	Bristle	.20	30"	1	.40
14468*	Crimped Wire	.25	46"	1	.46
14476	Crimped Wire	.135	30"	1	.12
14477	Bristle	.135	30"	1	.10

### EXTRA LONG HANDLE/STIFF WIRE BRUSHES- 7625 SERIES

Single spiral fine wire brush part 4" long, twisted in wire handle with loop end. 42" overall length.

Order part #'s on page 40 of price list.



PART #	BRUSH SIZE	OVERALL LENGTH	PACK WEIGHT
76252	1/2"	42"	1 .26
76253	3/4"	42"	1 .28
76254	1"	42"	1 .44
76255	1-1/2"	42"	1 .46
76256	2"	42"	1 .50
76257	2-1/2"	42"	1 .52
76258	3"	42"	1 .54

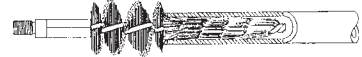
# SCHAEFER BRUSHES



## CONDENSER BRUSHES ACCESSORIES & ADAPTERS

### SPIN-GRIT™

Single stem construction with silicone carbide impregnated nylon recommended for brass tubes. This brush is made oversized so the filament will lay over, resulting in increased contact with surface, providing better cleaning and longer life than conventional condenser cleaning brushes.



Order part #'s on page 40 of price list.

BRUSH DIA.	TUBE SIZE	FEMALE THREAD	FEMALE PART #	MALE THREAD	MALE PART #	PK.	WT.
1/2"	1/4" - 5/16"	8-32	43482	8-32	93482	1	.02
1/2"	3/8" - 9/16"	12-24	43484	1/4-28	93484	1	.06
1/2"	5/8" - 11/16"	12-24	43486	1/4-28	93486	1	.06
1/2"	3/4" - 1"	12-24	43488	1/4-28	93488	1	.07



### SPIN-CLEAN™

Single stem construction with silicone carbide impregnated nylon. This brush is made with a tapered trim to allow better cleaning of enhanced condenser tubes. The long bristles are designed oversized with the intention of bending over, allowing the aggressive filament to come into maximum contact with the lands. The short bristles are long to get into the grooves. These brushes provide better cleaning and longer life than conventional condenser cleaning brushes.

Order part #'s on page 40 of price list.



PART #	TUBE SIZE	SMALL DIA. OF BRUSH	LARG DIA. OF BRUSH
93490	5/8"	5/8"	1"
93491	1/2"	1/2"	3/4"
93492	3/4"	3/4"	1-1/8"



### RODS & ROD HANDLES

- #13000 – "T" handgrip handle with 1/4-28 cap nut. 4" long x 1/2" diameter. For use with #13010 rods.
- #13001 – "T" handgrip handle with 12-24 screw. 4" long x 1/2" diameter. For use with #13002 and #13003 rods.
- #13002 – 24" aluminum extension rod 5/16" diameter with 12-24 male thread one end, female other. For use with 3/8" through 1" diameter condenser brushes.
- #13003 – 36" aluminum extension rod 5/16" diameter with 12-24 male thread one end, female other. For use with 3/8" through 1" diameter condenser brushes.
- #13010 – 36" galvanized steel condenser brush rod with 1/4-28 male thread one end and female thread at other end. For use with 1/4-28 male thread brushes.
- #13041 – "T" handle with 8-32 male thread one end. For use with #13042 rods.
- #13042 – 24" x .162 dia. rod, 8-32 female thread one end, male 8-32 thread other end.
- #13044 – 48" x .162 dia. rod with 8-32 male thread one end, formed handle other end. For use with 1/4" and 5/16" dia. condenser brushes.

### ADAPTERS

- #13006 – 1/4-28 male thread to 12-24 male thread.
- #13008 – 1/4-28 female thread to 12-24 male thread.



Order part #'s on page 41 of price list.

