



Switch Repair Instructions for AA/AAA MINI MAGLITE® FLASHLIGHTS

The distinctive shapes, styles and overall appearances of all Mag® flashlights, and the circumferential inscriptions extending around the heads of all Mag® flashlights are trademarks of Mag Instrument, Inc. The circumferential inscription on the head of every flashlight signifies that it is an original Mag® flashlight and part of the Mag® family of flashlights. U.S. Trademark Registrations for the shape, style and overall appearance trademarks of Mag® flashlights and for circumferential inscription trademarks of Mag® flashlights include Nos. 1,808,998; 2,074,795; 2,687,693; 2,745,460; 2,765,978 and 2,765,979.

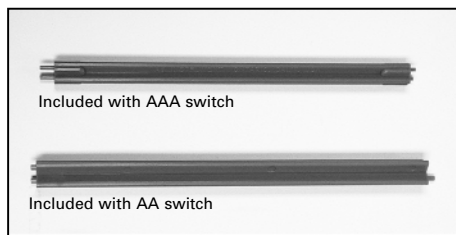
The Mini Maglite® 2-cell AA and AAA flashlights are covered by one or more pending patent applications and U.S. Patent, Nos. 4,577,263; 4,656,565; 4,658,336; 4,819,141; 4,851,974; 4,899,265; 4,942,505; 5,003,440; 5,113,326; 5,143,441; 5,207,502; 5,226,722; 5,293,307; 5,349,506; 5,722,765; 6,135,611; 6,170,960; 6,361,183 and by foreign patents.

CORPORATE OFFICE
MAG INSTRUMENT, INC.
1635 S. Sacramento Ave.
P.O. Box 50600
Ontario, California U.S.A. 91761-1083
Website: www.maglite.com
Warranty: Tel: (800) 283-5562 or
(909) 947-1006
Fax: (909) 947-5041
E-mail: warranty@magmail.com
Sales & Parts:
Tel: (800) 289-6241 • (909) 947-1006
E-mail: salesdesk@magmail.com
©2004 MAG INSTRUMENT, INC.

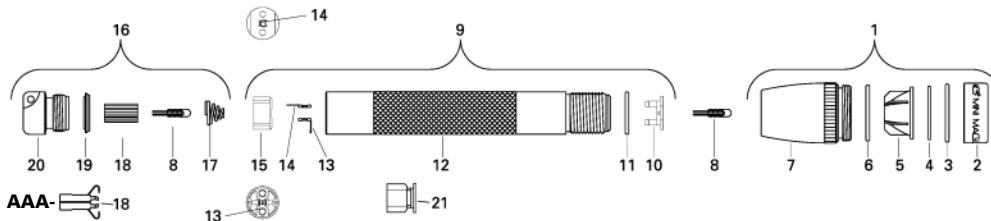
421-000-444 8/04

AA/AAA Switch Replacement

Tool required to replace switches in AA/AAA Mini Maglite® flashlights



SCHEMATIC - FLASHLIGHT



Parts List for Standard Black AAA Mini Maglite® Flashlight

ITEM NO	QTY.	PART NUMBER	DESCRIPTION
1	1	-	Head Sub-Assembly
2	1	216-000-020	Face cap, Black
3	1	108-000-068	'O' Ring, Face cap
4	1	108-000-063	Clear Lens
5	1	108-000-064	Reflector
6	1	108-000-065	'O' Ring, Head
7	1	216-000-008	Head, Black
8	1	LM2A001	Bulb
9	1	108-000-261	Barrel & Switch Sub-Assembly
10	1	*	Insulator Receptacle, Upper
11	1	108-000-066	'O' Ring, Barrel
12	1	216-000-032	Barrel, Black
13	-	-	Side Contact
14	-	-	Lower Contact
15	-	-	Lower Insulator
16	1	108-000-197	Tail cap Sub-Assembly
17	1	108-000-069	Spring, Tail cap
18	1	108-000-618	Electrical Contact
19	1	108-000-204	Lip Seal
20	1	220-000-156	Tail cap, Black
21	1	108-000-071	Switch Assembly AAA

Parts List for Standard Black AA Mini Maglite® Flashlight

ITEM NO	QTY.	PART NUMBER	DESCRIPTION
1	1	-	Head Sub-Assembly
2	1	203-000-004	Face cap, Black
3	1	108-000-045	'O' Ring, Face cap
4	1	108-000-046	Clear Lens
5	1	108-000-038	Reflector
6	1	108-000-041	'O' Ring, Head
7	1	203-000-273	Head, Black
8	1	LM2A001	Bulb
9	1	108-000-252	Barrel & Switch Sub-Assembly
10	1	*	Insulator Receptacle, Upper
11	1	108-000-042	'O' Ring, Barrel
12	1	203-000-254	Barrel, Black
13	-	-	Side Contact
14	-	-	Lower Contact
15	-	-	Lower Insulator
16	1	108-000-215	Tail cap Sub-Assembly
17	1	108-000-044	Spring, Tail cap
18	1	108-000-062	Bulb Protector
19	1	108-000-205	Lip Seal
20	1	203-000-172	Tail cap, Black
21	1	108-000-211	Switch Assembly AA

Removing The Switch

STEP 1

Unscrew (counter clockwise) and remove the TAIL CAP ASSEMBLY (16) and batteries.

Note: A spare LAMP (8) is located in the TAIL CAP (20).



STEP 2

Unscrew (counter clockwise) and remove the entire HEAD ASSEMBLY (1).



STEP 3

Remove the LAMP (8) by pulling it straight out of the receptacles.

WARNING: Do not allow children to install or tamper with the lamp. Protect the lamp from bending or twisting. If the lamp is installed improperly or if the leads from the lamp are twisted so as to contact one another, this could short circuit the flashlight and cause heat generation.



STEP 4

Insert the end of the SWITCH REPAIR TOOL with the longest pin protrusion into the bottom of the BARREL (12). Rotate the tool until the two pins enter the two holes in the bottom of the LOWER INSULATOR (15).



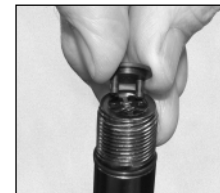
STEP 5

Place the TOOL and the BARREL (12) on a flat surface and push down on the BARREL (12). The UPPER INSULATOR (10) will move upward and separate from the LOWER INSULATOR (15).



STEP 6

You can now remove the UPPER INSULATOR (10) from the BARREL (12).

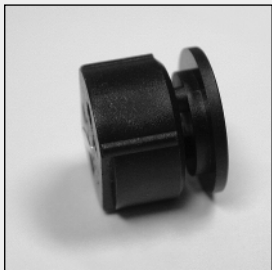


STEP 7

Slowly lift the BARREL (12) off of the TOOL, the LOWER INSULATOR (15) should be on the TOOL, if not, tap the BARREL (12) lightly and the LOWER INSULATOR with CONTACT ASSEMBLY (13, 14, 15) should fall out.



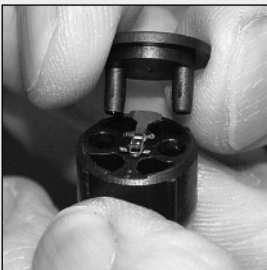
Preparing Replacement Switch Assembly



STEP 8
Replacement switches come assembled.



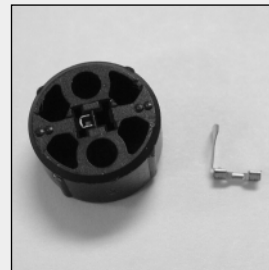
STEP 9
To separate the SWITCH ASSEMBLY (21) prior to installation, place the SWITCH ASSEMBLY (21) on the LONG PIN TOOL.



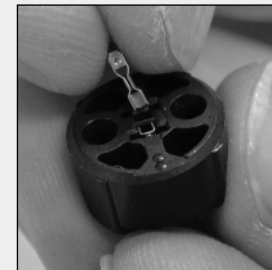
STEP 10
Push down on the lower half of the SWITCH ASSEMBLY (21), this will cause the UPPER INSULATOR (10) to pop up.



STEP 11
The LOWER INSULATOR (15) should look like this. Note that the SIDE CONTACT (13) comes to the rim of the insulator.



STEP 12
Occasionally the SIDE CONTACT (13) will fall out.

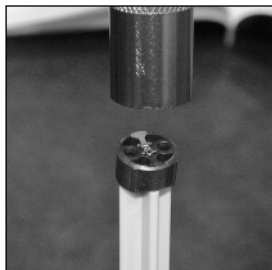


STEP 13
If this happens, carefully place the SIDE CONTACT (13) into the hole, making sure the fan portion of the SIDE CONTACT (13) extends towards the rim of the LOWER INSULATOR (15). The two lamp pin holes must be visible.

Replacing the Switch



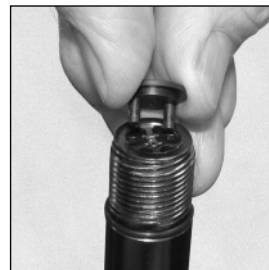
STEP 14
Place the LOWER INSULATOR (15) with the SIDE CONTACT (13) facing up, on the short pin end of the tool make sure the pins of the tool are in the holes of the LOWER INSULATOR (15).



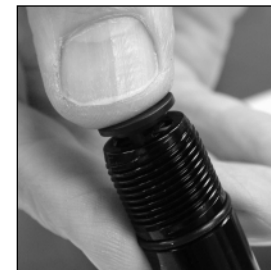
STEP 15
Insert the TOOL with the LOWER INSULATOR (15) into the bottom of the BARREL (12). Push the TOOL into the BARREL (12) until it stops at the top of the BARREL (12).



The top part of the BARREL (12) should look like this if it is placed correctly.



STEP 16
While firmly holding the TOOL and BARREL (12), line up the pins of the UPPER INSULATOR (10) with the holes of the LOWER INSULATOR (15).



Push the UPPER INSULATOR (10) down into the LOWER INSULATOR (15) until it presses into place.



STEP 17
Reinstall the LAMP (8) in the receptacles of the UPPER INSULATOR (10). Adjust the LAMP (8) so it is as vertical and straight as possible. Using a clean soft cloth, gently wipe the moisture and oil from the glass on the LAMP (8).
WARNING: Do not allow children to install or tamper with the lamp. Protect the lamp from bending or twisting. If the lamp is installed improperly or if the leads from the lamp are twisted so as to contact one another, this could short circuit the flashlight and cause heat generation.

ALL VISIBLE SEALS (6, 10 & 19) SHOULD HAVE A LIGHT COAT OF OIL ON THEM. IF NOT, LIGHTLY COAT WITH SUPER LUBE OR PETROLEUM JELLY (VASELINE®).



STEP 18
Replace the HEAD ASSEMBLY (1).



STEP 19
Before installing the batteries, check for leakage or corrosion. Reinstall or replace the batteries, (two AA or AAA series alkaline only, depending on the size of your flashlight). Install batteries with the positive (+) end toward the lamp.



STEP 20
Reinstall TAIL CAP ASSEMBLY (16) - always make sure tail cap is tight for a good positive electrical contact. Call Warranty if problems persist. Tel: (800) 283-5562 or (909) 947-1006