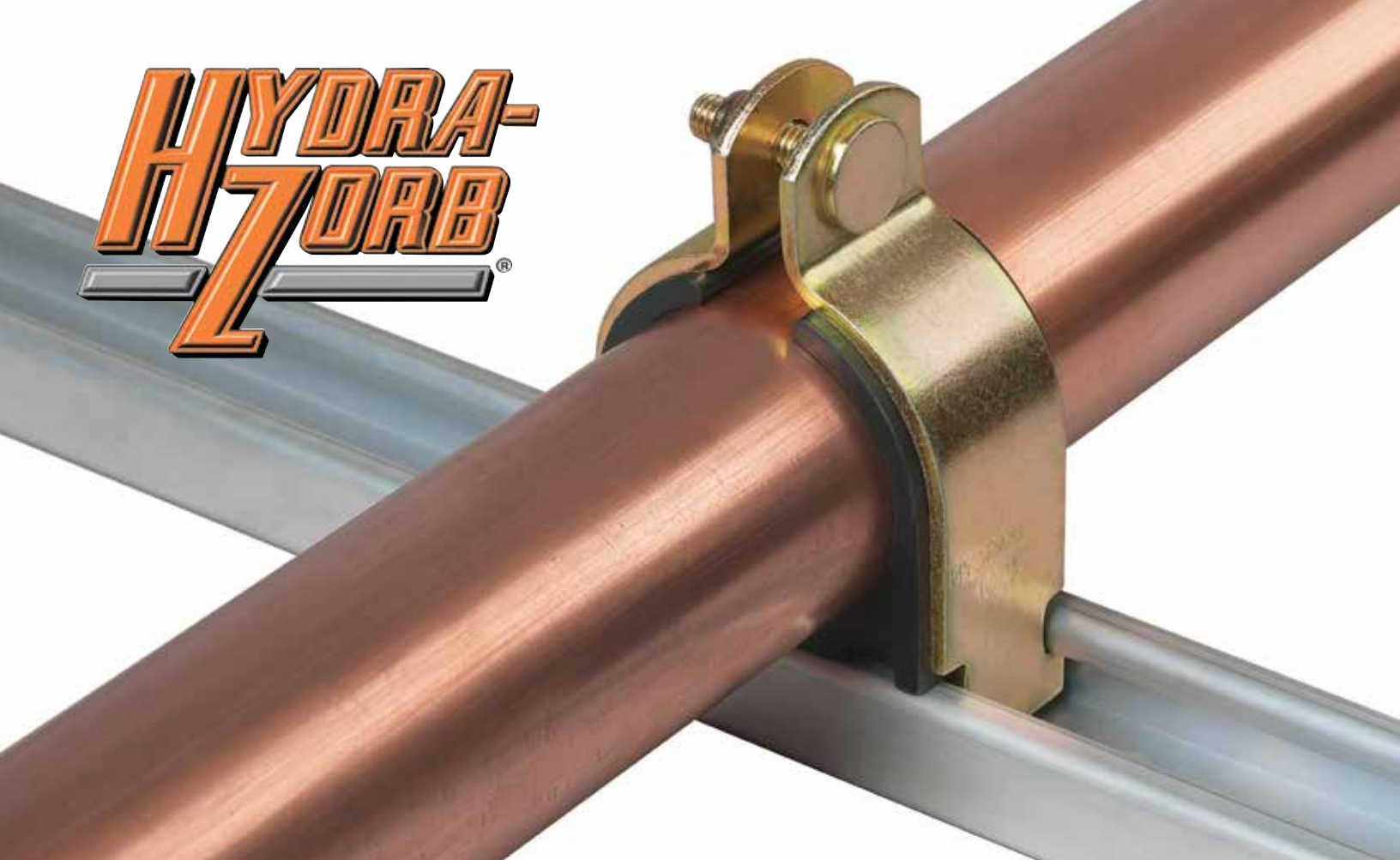


**HYDRA-
H7ORB**



CUSHION CLAMP ASSEMBLIES & INSULATION COUPLING SYSTEMS

**KLO-
KSHURE**







Hydra-Zorb Co.[®] has been the leader in the strut mounted clamp market for over 50 years, offering a wide variety of solutions when shock, vibration and corrosion are a problem.

As the originator of the cushion clamp assembly, Hydra-Zorb[®] is the name to request in the fluid power, pneumatic, refrigeration, HVAC and plumbing/mechanical industries.



STRUT MOUNTED CUSHION CLAMP



Features:

- Cushion material is a thermoplastic elastomer rated from -65°F to +275°F
- Clamps are 1008-1010 carbon steel
- Studs are projection welded
- Nylon insert locknut
- Resist most fuels, oils, gases, greases, solvents, mineral acids and other harsh materials
- Allow fluid conductors to be added or removed from installations without disturbing adjacent lines
- Permit various size lines to be mixed to suit installation
- All metal components have a Tri-Valent (non-hex) plating
- Provide fast and simple installation. Only one man and one tool needed for assembly after base channel is in place
- Available in 304 and 316 stainless steel and aluminum
- UL Classified Flame/Smoke for use in plenums.
- Made in USA

PART NUMBER SYSTEM

Ordering is simple. First, determine if you require tube or pipe series. Second, determine the size of line to be clamped. That's it.

For a 3/4" O.D. tube assembly:

SERIES	DECIMAL INCH
100	075

For a 2-1/2" nominal pipe assembly:

SERIES	DECIMAL INCH
200	250

All standard clamp assemblies consist of a 6-digit part number. A complete listing of part numbers for the pipe and tube series is on pages 5-6. The clamp assemblies are shown by series 100 and 200 as:

100 = TUBE (O.D. Tube)

200 = PIPE (Nominal Pipe)

Cushion Size is indicated by decimal inch. See examples above.

ADDITIONAL MATERIALS

These are commonly requested materials for special applications.
Just add one of the following suffix numbers to your 6-digit part number.

SERIES	DECIMAL INCH	SUFFIX	
_____	_____	- 4 - 555	304 stainless steel clamps 304 stainless stud (welded) 304 locknut
_____	_____	- 4 - 565	304 stainless steel clamps 316 hex head bolt (loose) 304 locknut
_____	_____	- 4 - 655	316 stainless steel clamps 304 stainless stud (welded) 304 locknut
_____	_____	- 4 - 666	316 stainless steel clamps 316 hex head bolt (loose) 316 locknut
_____	_____	- 4 - 865	aluminum (5052) clamps* 316 hex head bolt (loose) 304 locknut

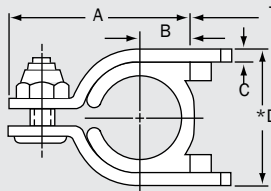
* Special Orders Only



CUSHION CLAMP ASSEMBLIES

Engineering Information & Piping Assembly Chart

TUBE OUTSIDE DIAMETER	.250	.312	.375	.470	.500	.625	.750	.875	1.000	1.125	1.190	1.250	1.375	
Clamp Assembly Part Number	100025	100031	100037	100047	100050	100062	100075	100087	100100	100112	100119	100125	100137	
Quantity Per Box	25	25	25	25	25	25	25	25	25	20	20	20	20	
ACR Tube			■	■	■	■	■	■		■			■	
Refrigeration Serv.	■	■	■	■	■	■	■	■		■			■	
Type "K" Copper			■	■	■	■	■	■		■			■	
Type "L" Copper			■	■	■	■	■	■		■			■	
Type "M" Copper			■	■	■	■	■	■		■			■	
Steel	■	■	■	■	■	■	■	■	■	■	■	■	■	
Stainless Steel	■	■	■	■	■	■	■	■	■	■	■	■	■	
Aluminum			■		■	■	■	■	■			■		
PB			■		■	■		■		■			■	
PVC			■			■		■		■			■	
CPVC			■		■	■		■		■			■	
PE			■			■		■		■			■	
(see diagram below)	A	1.11	1.24	1.24	1.36	1.36	1.50	1.78	1.91	2.03	2.16	2.30	2.30	2.75
	B	.22	.28	.28	.34	.34	.41	.53	.58	.66	.72	.72	.78	.91
	C	.075	.075	.075	.075	.075	.075	.075	.075	.075	.075	.105	.105	.119
	*D	.62	.75	.75	.87	.87	1.00	1.33	1.45	1.66	1.79	1.92	1.92	2.22

NOMINAL PIPE SIZE	1/4	3/8	1/2	3/4	1	
Pipe O.D.	.54	.675	.84	1.05	1.315	
Clamp Assembly Part Number	200025	200037	200050	200075	200100	
Quantity Per Box	25	25	25	20	20	
Carbon Steel 5S, 10S, 40 & 80	■	■	■	■	■	
Stainless 5S, 10S, 40 & 80	■	■	■	■	■	
Red & Yellow Brass & Copper	■	■	■	■	■	
Aluminum 5S, 10S, 40 & 80	■	■	■	■	■	
PVC 48, 80 & 120	■	■	■	■	■	
CPVC 40 & 80	■	■	■	■	■	
PE 40 & 80	■	■	■	■	■	
PP 40 & 80	■	■	■	■	■	
PVDF 80		■	■	■	■	
PB 40		■	■	■	■	
ABS 40 & 80		■	■	■	■	
Fiberglass			■	■	■	
	A	1.41	1.59	1.91	2.16	2.75
	B	.63	.45	.59	.72	.91
	C	.075	.075	.075	.075	.119
	*D	.91	1.07	1.45	1.79	2.22

*Minimum Required Installation Dimension

For hoses: measure hose outside diameter and select nearest o.d. size

1.500	1.625	1.750	1.875	2.000	2.125	2.250	2.375	2.500	2.625	3.000	3.125	3.625	4.125	5.000	5.125	6.000	6.125
100150	100162	100175	100187	100200	100212	100225	100237	100251	100262	100300	100312	100362	100412	100500	100512	100600	100612
20	20	20	20	10	10	10	10	5	5	5	5	5	5	Each	Each	Each	Each
	■				■		■		■		■	■	■	■	■	■	■
	■																
	■				■				■		■	■	■	■	■	■	■
	■				■				■		■	■	■	■	■	■	■
	■				■				■		■	■	■	■	■	■	■
■	■	■	■	■	■	■	■	■	■	■	■	■	■	■	■	■	■
■	■	■	■	■	■	■	■	■	■	■	■	■	■	■	■	■	■
■				■	■			■	■		■	■	■	■	■	■	■
	■				■				■		■	■	■	■	■	■	■
	■			■					■		■	■	■	■	■	■	■
				■					■		■	■	■	■	■	■	■
									■		■	■	■	■	■	■	■
2.75	3.03	3.03	3.28	3.28	3.53	3.78	3.78	4.03	4.03	4.52	4.52	5.03	5.66	6.75	6.75	7.75	7.75
.91	1.03	1.03	1.16	1.16	1.28	1.41	1.41	1.53	1.53	1.78	1.78	2.03	2.34	2.81	2.81	3.31	3.31
.119	.119	.119	.119	.119	.119	.119	.119	.119	.119	.119	.119	.119	.119	.119	.119	.119	.119
2.22	2.47	2.47	2.47	2.72	2.97	3.22	3.22	3.47	3.47	3.97	3.97	4.47	5.09	6.25	6.25	7.50	7.50

1-1/4	1-1/2	2	2-1/2	3	3-1/2	4	5	6
1.66	1.90	2.375	2.875	3.5	4.0	4.5	5.563	6.625
200125	200150	200200	200250	200300	200350	200400	200500	200600
20	20	10	5	5	5	5	Each	Each
■	■	■	■	■	■	■	■	■
■	■	■	■	■	■	■	■	■
■	■	■	■	■	■	■		
■	■	■	■	■	■	■	■	■
■	■	■	■	■	■	■	■	■
■	■	■	■	■	■	■	■	■
■	■	■	■	■	■	■	■	■
■	■	■	■	■	■	■	■	■
■	■	■	■	■	■	■	■	■
■	■	■	■	■	■	■	■	■
■	■	■	■	■	■	■	■	■
■	■	■	■	■	■	■	■	■
3.03	3.28	3.78	4.27	4.91	5.53	6.03	7.03	8.03
1.03	1.16	1.41	1.66	1.97	2.28	2.53	3.03	3.53
.119	.119	.119	.119	.119	.119	.119	.135	.135
2.47	2.47	3.22	3.72	4.36	4.97	5.47	6.47	7.47



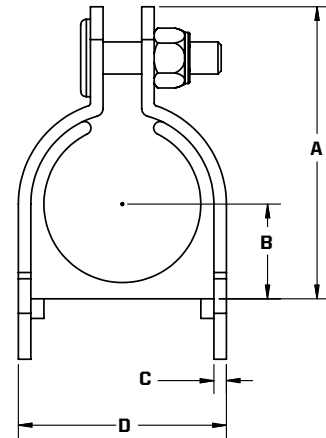
CUSHION CLAMPS FOR METRIC PIPE



Features:

- Cushion material is a thermoplastic elastomer rated from -65°F to +275°F
- Guards against shock, vibration and corrosion
- Supports metric polypropylene pipe
- Classified UL Flame/Smoke for use in air handling systems
- Made in USA

PART NUMBER	DESCRIPTION	A	B	C	D
20 MMHZ	20mm Clamp Assembly	1.78	0.53	0.07	1.33
25 MMHZ	25mm Clamp Assembly	2.03	0.66	0.07	1.66
32 MMHZ	32mm Clamp Assembly	2.30	0.78	0.07	1.92
40 MMHZ	40mm Clamp Assembly	2.75	0.91	0.11	2.22
50 MMHZ	50mm Clamp Assembly	3.28	1.16	0.11	2.72
63 MMHZ	63mm Clamp Assembly	4.03	1.53	0.11	3.47
75 MMHZ	75mm Clamp Assembly	4.52	1.78	0.11	3.97
90 MMHZ	90mm Clamp Assembly	4.91	1.97	0.11	4.36
110 MMHZ	110mm Clamp Assembly	5.76	2.44	0.11	5.30
125 MMHZ	125mm Clamp Assembly	6.55	2.71	0.11	6.15
160 MMHZ	160mm Clamp Assembly	7.95	3.41	0.11	7.70



* Additional sizes available (see page 29).

TRH HANGER SYSTEM

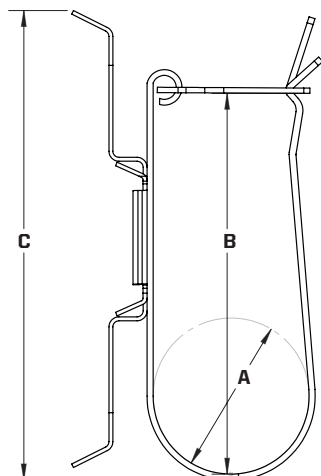
The TRH Hanger System provides a superior fit and finish to better meet contractor and engineer specifications. Simply squeeze tips together and the spring steel hanger can be secured or adjusted in seconds.



Features:

The TRH Hanger System supports a pair of insulated flow and return refrigerant lines on 1/4" to 3/8" threaded rod. Simply fold the lock-tab over to secure the lines into the strap. The spring steel hanger grips the rod tightly, and the black zinc coating offers corrosion resistance while matching the insulation color. The clamp can be detached from the rod hanger and used to secure lines to flat surfaces.

PART NUMBER	THREADED ROD DIAMETER	A	B	C
TRH-2	1/4" - 3/8"	1.28	3.12	3.82
TRH-3	1/4" - 3/8"	1.40	3.28	3.70
TRH-4	1/4" - 3/8"	2.40	4.17	5.00
TRH-5	1/4" - 3/8"	3.38	6.26	7.03



Works with 1/4"-3/8" threaded rod

Supports a pair of insulated liquid and suction lines

Spring steel rod hanger can be fitted or adjusted in seconds



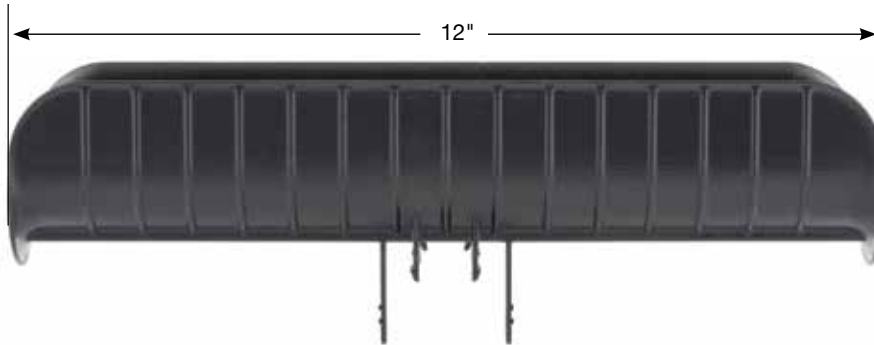
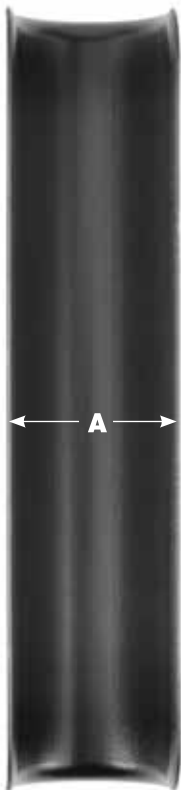


BRONCO® INSULATED TUBE AND PIPE SADDLE



Features:

- Fits perfectly on anchor channel of any depth
- Plastic legs snap into channel, stability tabs overlap channel exterior for a secure installation
- External stability tabs with grooved slot feature for optional self-tapping screw
- Made in the USA
- Manufactured from high-strength plastic
- Single piece product—no assembly or tools required
- Enhanced safety lip prevents insulation crushing and tearing from pipe movement
- Available in black and white to match insulation
- Superior finished appearance



PART NO. BLACK	PART NO. WHITE	DIMENSION A
HZSB225	HZSW225	2-1/4"
HZSB325	HZSW325	3-1/4"
HZSB425	HZSW425	4-1/4"
HZSB525	HZSW525	5-1/4"
HZSB625	HZSW625	6-1/4"



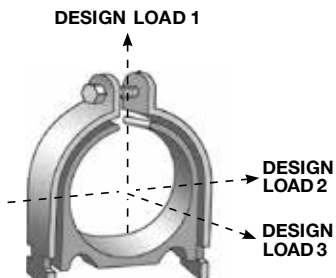


Easy installation. Clip onto channel, then simply set insulation tube/pipe run into saddle.



Available in black or white to match insulation.

LOAD DATA SHEET



PART NO.	SIZE	DESIGN LOAD 1		DESIGN LOAD 2		DESIGN LOAD 3	
		O.D.	LBS.	KN	LBS.	KN	LBS.
TUBE SERIES							
100025	1/4"	400	(1.78)	50	(0.22)	50	(0.22)
100037	3/8"	400	(1.78)	50	(0.22)	50	(0.22)
100050	1/2"	400	(1.78)	50	(0.22)	50	(0.22)
100062	5/8"	400	(1.78)	50	(0.22)	50	(0.22)
100075	3/4"	600	(2.67)	75	(0.33)	75	(0.33)
100087	7/8"	600	(2.67)	75	(0.33)	75	(0.33)
100100	1"	600	(2.67)	75	(0.33)	75	(0.33)
100112	1-1/8"	600	(2.67)	75	(0.33)	75	(0.33)
100125	1-1/4"	600	(2.67)	75	(0.33)	75	(0.33)
100137	1-3/8"	600	(2.67)	75	(0.33)	75	(0.33)
100150	1-1/2"	600	(2.67)	75	(0.33)	75	(0.33)
100162	1-5/8"	600	(2.67)	75	(0.33)	75	(0.33)
100175	1-3/4"	800	(3.56)	125	(0.56)	125	(0.56)
100187	1-7/8"	800	(3.56)	125	(0.56)	125	(0.56)
100200	2"	800	(3.56)	125	(0.56)	125	(0.56)
100212	2-1/8"	800	(3.56)	125	(0.56)	125	(0.56)
100225	2-1/4"	800	(3.56)	125	(0.56)	125	(0.56)
100237	2-3/8"	800	(3.56)	125	(0.56)	125	(0.56)
100251	2-1/2"	800	(3.56)	125	(0.56)	125	(0.56)
100262	2-5/8"	800	(3.56)	125	(0.56)	125	(0.56)
100300	3"	800	(3.56)	125	(0.56)	125	(0.56)
100312	3-1/8"	800	(3.56)	125	(0.56)	125	(0.56)
100362	3-5/8"	1000	(4.45)	200	(0.89)	150	(0.67)
100412	4-1/8"	1000	(4.45)	200	(0.89)	150	(0.67)
100512	5-1/8"	1000	(4.45)	200	(0.89)	150	(0.67)
100612	6-1/8"	1000	(4.45)	200	(0.89)	150	(0.67)
PART NO.	SIZE	DESIGN LOAD 1		DESIGN LOAD 2		DESIGN LOAD 3	
		NOM.	LBS.	KN	LBS.	KN	LBS.
PIPE SERIES							
200025	1/4"	400	(1.78)	50	(0.22)	50	(0.22)
200037	3/8"	600	(2.67)	75	(0.33)	75	(0.33)
200050	1/2"	600	(2.67)	75	(0.33)	75	(0.33)
200075	3/4"	600	(2.67)	75	(0.33)	75	(0.33)
200100	1"	600	(2.67)	75	(0.33)	75	(0.33)
200125	1-1/4"	800	(3.56)	125	(0.56)	125	(0.56)
200150	1-1/2"	800	(3.56)	125	(0.56)	125	(0.56)
200200	2"	800	(3.56)	125	(0.56)	125	(0.56)
200250	2-1/2"	800	(3.56)	125	(0.56)	125	(0.56)
200300	3"	1000	(4.45)	200	(0.89)	150	(0.67)
200350	3-1/2"	1000	(4.45)	200	(0.89)	150	(0.67)
200400	4"	1000	(4.45)	200	(0.89)	150	(0.67)
200500	5"	1000	(4.45)	200	(0.89)	150	(0.67)
200600	6"	1000	(4.45)	200	(0.89)	150	(0.67)



SPECIFICATION DATA & GUIDELINES

Specification Data For Tube, Pipe & Hose Clamping

- All tube, pipe and hose lines are to be secured using resilient Hydra-Zorb cushions with clamps and anchoring channel or other similar approved equal method.
- Tube, pipe and hose are to be secured to the machine base or frame. Clamp assemblies shall allow:
 - pipe and tube sizes to be intermixed on variable centers to conserve space
 - for addition or removal of tube or pipe without unclamping other elements
 - tubes, pipes and hoses to be stacked back to back
 - installation without removing lines from supply or receiver.
- Cushions shall be of resilient material: resistant to oils, hydraulic fluids, grease, fuels, common solvents, dilute bases and mineral acids, and not degrade at operating temperatures of 275° F.
- Entire clamp assembly can be assembled or disassembled with a single hand or power wrench. Clamps should be spaced not more than 60 diameters apart or a maximum of 5 feet.
- Available in sizes from 1/4" to 6-1/8" o.d. tube and 1/4" to 6" nominal pipe. Available in mild steel, 304 and 316 stainless and aluminum (special order).
- Classified by UL for use in air handling systems

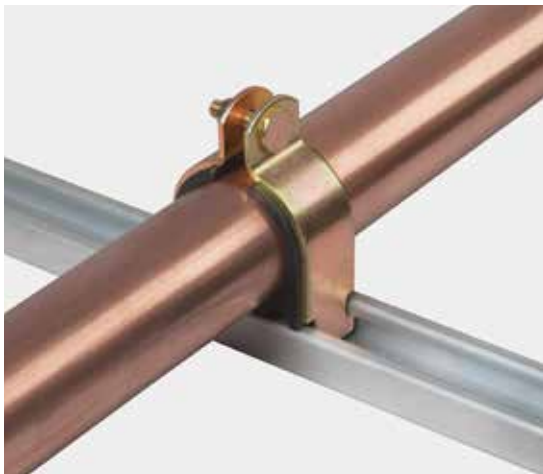
Guidelines For Reducing Vibration Shock And Noise In Fluid Systems

A. Isolate Pumps

- Use flexible couplings between pump and prime mover.
- Use adequately-sized hose between pump pressure port and start of tubing runs. A two or three foot length is adequate.
- Avoid solid contact between suction and return lines and fluid reservoir.
- Isolation mounts between the pump and prime mover & the reservoir or machine frame are highly desirable.

B. Rigidly Mount all Valves

- Mount all larger directional and flow control valves to the machine base or frame. Avoid in-line mounting.
- Smaller two-port solenoid, in-line flow and in-line check valves can be considered rigidly-mounted when installed directly next to a clamp point.



C. Minimize Fluid Resistance

- Use adequately-sized components and lines.
- Avoid drilled junction blocks.
- Keep conductor runs as straight as possible.
- Use bends rather than right angle fittings. Straight fittings for disassemble and service may be used as required.

D. Secure The Fluid Conductor System

- Use resilient cushion clamps.
- Normally, clamp spacing distance should not be more than 60 diameters.
- Where severe vibration is present, clamp spacing distance should not be more than 30 diameters.
- On long runs, vary clamp spacings by approximately 15% to break up and change vibration frequency.
- Provide clamps as close as possible to each side of a bend.
- Use unions rather than rigidly-mounted bulkhead fittings. Use clamps on each side of union to maintain alignment during service or reinstallation.
- All clamping should be made to the machine frame. However, clamping lines to each other is much better than not clamping.
- Use adequate lengths of flexible hose where required. Clamp tube directly adjacent to hose connection point. Clamp hose to base or frame when practical.

WITH KLO-SHURE®



WITHOUT KLO-SHURE®





Patented Klo-Shure® Insulation Couplings allow sections of closed-cell, elastomeric or fiberglass insulation to be secured, eliminating most secondary operations at suspension points. It can also be used to simply join and secure two lengths of insulation.



7-Series Strut Mount supports & secures tubing in strut mounted applications.



8-Series Strut Mount installs in seconds without metal clamps.



9-Series Strut Mount for fiberglass insulation. Available for copper tube, iron pipe and mm sizing.



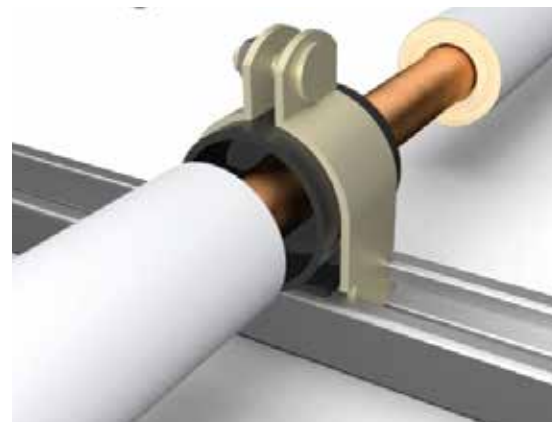
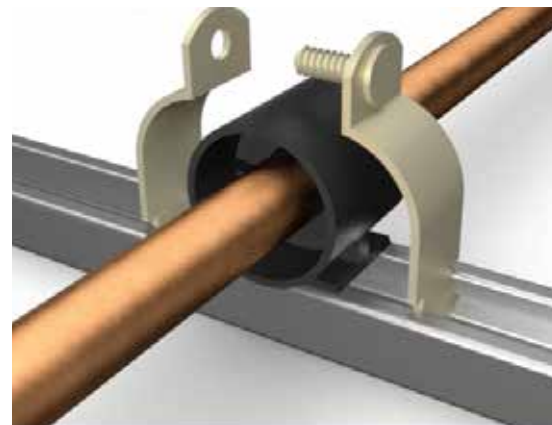
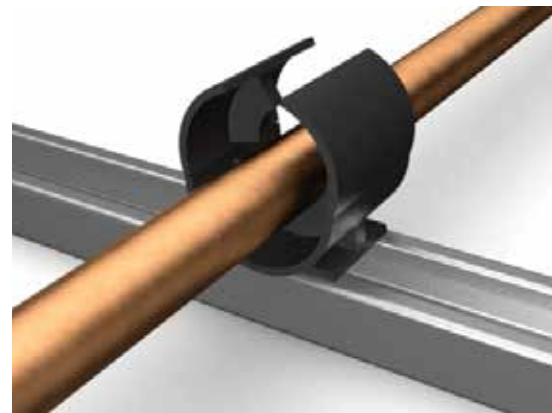
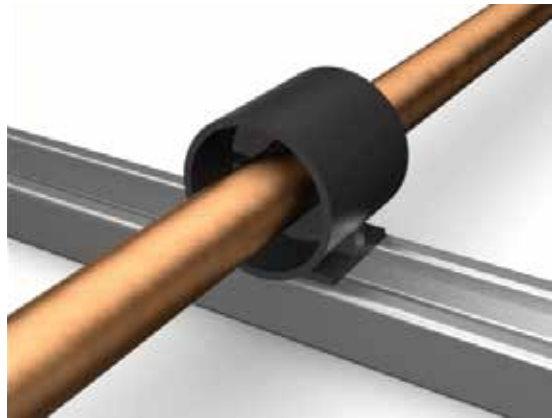
Clevis System locks the coupling into clevis hanger.

KLO-SHURE INSULATION COUPLINGS

Classified by UL for use in air handling systems.
UL 2043 Flame Spread / Smoke Index.
Available for copper tube, iron pipe and
metric sizes. Easy to install.

Features:

- Manufactured from high strength TPO plastic
- Meets the 25/50 flame spread/smoke developed index
- Made in USA
- Superior vapor barrier
- Three times faster installation of closed-cell elastomeric and fiberglass insulation
- Dramatically improved finished appearance of insulated tubing
- Eliminates insulation compression at suspension points
- For use with strut mounted clamps and clevis hangers
- Supports OD tube from 1/4" to 4-1/8" and 1/2" to 2-1/2" nominal pipe
- Metric sizes available from 25mm - 90mm
- Available with 304 or 316 stainless steel hardware



SPECIFICATION DATA AND GUIDELINES

Specification and Insulation Data:

- All insulated copper tube and iron pipe lines are to be secured using resilient Klo-Shure® Insulation Couplings and Hydra-Zorb® anchor channel
- Tubing supported and secured by internal part design
- Insulation is to be inserted inside coupling with insulation contacting internal wall
- Secondary operations (glue and tape) can be performed at the installer's discretion
- Entire assembly can be assembled or disassembled with a single hand or power wrench
- Proudly manufactured in the USA

Klo-Shure Recommendations:

- Coupling spacing should be no more than 60 diameters.
- Keep conductor runs as straight as possible.
- Overwrap of Klo-Shure® coupling with insulation is not required.
- 7-Series and 9-Series acceptable for horizontal and vertical installations.



7-Series Strut Mount



8-Series Strut Mount



9-Series Strut Mount



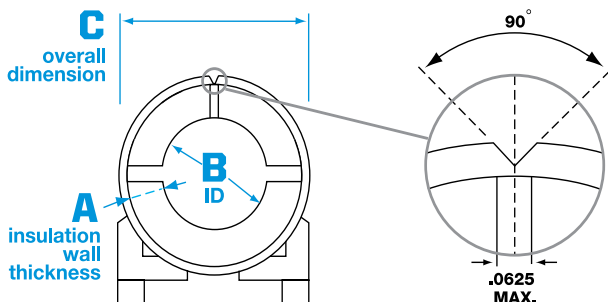
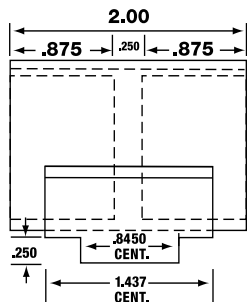
Clevis System

7-SERIES STRUT MOUNT INSULATION COUPLINGS

Klo-Shure® strut mounted parts include the Klo-Shure® Coupling, clamp halves with welded fastener and locknut. **For use with elastomeric insulation.**



A	B	C	PART NO.	QUANTITY PER BOX
Klo-Shure® Strut Mounted Coupling for 3/8" wall insulation	1/4" OD	1.12	723025	40
	3/8" OD	1.25	723037	25
	1/2" OD	1.37	723050	20
	5/8" OD	1.50	723062	20
	3/4" OD	1.62	723075	20
	7/8" OD	1.75	723087	20
	1" OD	1.87	723100	20
	1-1/8" OD	2.00	723112	20
	1-3/8" OD	2.25	723137	20
	1-5/8" OD	2.50	723162	10
	2-1/8" OD	3.00	723212	10
Klo-Shure® Strut Mounted Coupling for 1/2" wall insulation	1/4" OD	1.37	724025	25
	3/8" OD	1.50	724037	25
	1/2" OD	1.62	724050	20
	5/8" OD	1.75	724062	20
	3/4" OD	1.87	724075	20
	7/8" OD	2.00	724087	20
	1" OD	2.12	724100	20
	1-1/8" OD	2.25	724112	20
	1-3/8" OD	2.50	724137	20
	1-5/8" OD	2.75	724162	10
	2-1/8" OD	3.25	724212	10
	2-5/8" OD	3.75	724262	10
	3-1/8" OD	4.25	724312	10
	3-5/8" OD	4.75	724362	10
	4-1/8" OD	5.25	724412	10



A	B	C	PART NO.	QUANTITY PER BOX
Klo-Shure® Strut Mounted Coupling for 3/4" wall insulation	1/4" OD	1.87	726025	20
	3/8" OD	2.00	726037	20
	1/2" OD	2.12	726050	10
	5/8" OD	2.25	726062	10
	3/4" OD	2.37	726075	10
	7/8" OD	2.50	726087	10
	1-1/8" OD	2.75	726112	10
	1-3/8" OD	3.00	726137	10
	1-5/8" OD	3.25	726162	10
	2-1/8" OD	3.75	726212	10
	2-5/8" OD	4.25	726262	10
	3-1/8" OD	4.75	726312	10
	3-5/8" OD	5.25	726362	10
4-1/8" OD	5.75	726412	10	
Klo-Shure® Strut Mounted Coupling for 1" wall insulation	1/4" OD	2.37	728025	10
	5/16" OD	2.43	728031	10
	3/8" OD	2.50	728037	10
	1/2" OD	2.62	728050	10
	5/8" OD	2.75	728062	10
	3/4" OD	2.87	728075	10
	7/8" OD	3.00	728087	10
	1-1/8" OD	3.25	728112	10
	1-3/8" OD	3.50	728137	10
	1-5/8" OD	3.75	728162	10
	2-1/8" OD	4.25	728212	10
	2-5/8" OD	4.75	728262	10
	3-1/8" OD	5.25	728312	10
3-5/8" OD	5.75	728362	10	
4-1/8" OD	6.25	728412	5	
Klo-Shure® Strut Mounted Coupling for 1-1/2" wall insulation	5/16" OD	3.43	729031	10
	3/8" OD	3.50	729037	10
	1/2" OD	3.62	729050	10
	5/8" OD	3.75	729062	10
	7/8" OD	4.00	729087	10
	1-1/8" OD	4.25	729112	10
	1-3/8" OD	4.50	729137	10
	1-5/8" OD	4.75	729162	10
	2-1/8" OD	5.25	729212	10
	2-5/8" OD	5.75	729262	10
3-1/8" OD	6.25	729312	5	

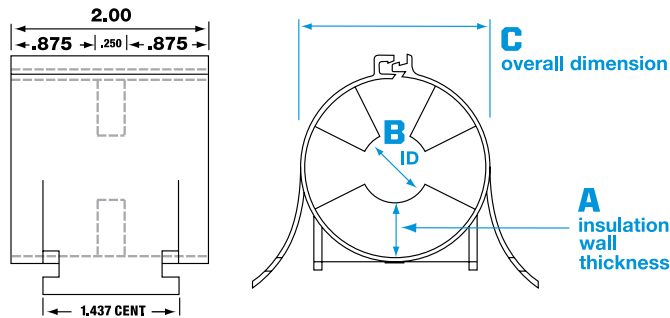
***Note:** Klo-Shure® ID equals copper tube OD. Chart indicates coupling sizes currently available from Klo-Shure®. All metal parts have Tri-Valent plating. Please contact Klo-Shure® for 304 or 316 stainless steel hardware pricing.



8-SERIES STRUT MOUNT INSULATION COUPLINGS FOR ELASTOMERIC INSULATION

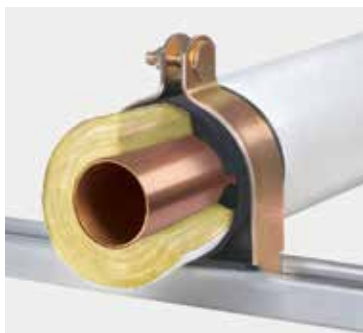
Klo-Shure® 8-Series couplings allow the installer to insert coupling into channel the and lock the top. No metal clamps needed.

For use with elastomeric insulation.



A	B	C	PART NO.
Klo-Shure® Coupling for 1/2" wall insulation	1/2" OD	1.62	824 050
	5/8" OD	1.75	824 062
	7/8" OD	2.00	824 087
	1-1/8" OD	2.25	824 112
	1-3/8" OD	2.50	824 137
	1-5/8" OD	2.75	824 162
	2-1/8" OD	3.25	824 212
Klo-Shure® Coupling for 3/4" wall insulation	5/8" OD	2.25	826 062
	7/8" OD	2.50	826 087
	1-1/8" OD	2.75	826 112
	1-3/8" OD	3.00	826 137
Klo-Shure® Coupling for 1" wall insulation	7/8" OD	3.00	828 087
	1-1/8" OD	3.25	828 112
	1-3/8" OD	3.50	828 137
	1-5/8" OD	3.75	828 162
	2-1/8" OD	4.25	828 212
	2-5/8" OD	4.75	828 262





9-SERIES STRUT MOUNT INSULATION COUPLINGS FOR FIBERGLASS INSULATION

Includes Klo-Shure® Coupling, clamp halves with welded fastener and locknut. For use with **fiberglass insulation**.

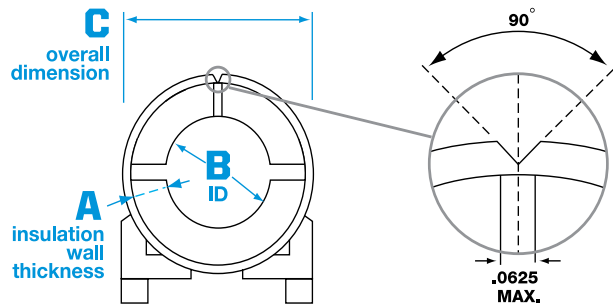
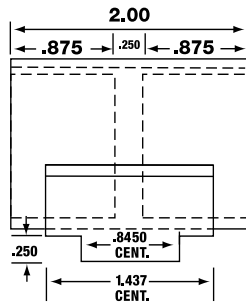
A	B	C	PART NO.	QUANTITY PER BOX
Klo-Shure® Strut Mounted Coupling copper tube sizes for 1/2" wall fiberglass insulation	5/8" OD	1.785	924062	20
	7/8" OD	2.025	924087	20
	1-1/8" OD	2.285	924112	20
	1-3/8" OD	2.500	924137	10
	1-5/8" OD	2.845	924162	10
	2-1/8" OD	3.285	924212	10
Klo-Shure® Strut Mounted Coupling copper tube sizes for 1" wall fiberglass insulation	5/8" OD	3.008	928062	10
	7/8" OD	3.008	928087	10
	1-1/8" OD	3.008	928112	10
	1-3/8" OD	3.638	928137	10
	1-5/8" OD	3.638	928162	10
	2-1/8" OD	4.138	928212	10
	2-5/8" OD	4.648	928262	10
Klo-Shure® Strut Mounted Coupling copper tube sizes for 1-1/2" wall fiberglass insulation	7/8" OD	4.138	929087	10
	1-1/8" OD	4.138	929112	10
	1-3/8" OD	4.648	929137	10
	1-5/8" OD	5.138	929162	10
	2-1/8" OD	5.138	929212	10
Klo-Shure® Strut Mounted Coupling copper pipe sizes for 2" wall fiberglass insulation	5/8" OD	4.648	922062	10
	7/8" OD	5.138	922087	10
	1-1/8" OD	5.138	922112	10
	1-3/8" OD	5.698	922137	10
	1-5/8" OD	5.698	922162	5
Klo-Shure® Strut Mounted Coupling iron pipe sizes for 1/2" wall fiberglass insulation	1/2" pipe (0.84)**	2.025	924084	20
	3/4" pipe (1.05)**	2.285	924105	20
	1" pipe (1.31)**	2.500	924131	10
	1-1/4" pipe (1.66)**	2.845	924166	10
	1-1/2" pipe (1.90)**	3.285	924190	10
Klo-Shure® Strut Mounted Coupling iron pipe sizes for 1" wall fiberglass insulation	1/2" pipe (0.84)**	3.008	928084	10
	3/4" pipe (1.05)**	3.008	928105	10
	1" pipe (1.31)**	3.638	928131	10
	1-1/4" pipe (1.66)**	3.638	928166	10
	1-1/2" pipe (1.90)**	3.950	928190	10
	2" pipe (2.37)**	4.648	928237	10
	2-1/2" pipe (2.87)**	5.138	928287	10
	3" pipe (3.50)**	5.750	928M90	10
Klo-Shure® Strut Mounted Coupling iron pipe sizes for 1-1/2" wall fiberglass insulation	1/2" pipe (0.84)**	4.138	929084	10
	3/4" pipe (1.05)**	4.138	929105	10
	1" pipe (1.31)**	4.648	929131	10
	1-1/4" pipe (1.66)**	5.138	929166	10
	1-1/2" pipe (1.90)**	5.138	929190	10

* Note: Klo-Shure® ID equals copper pipe/tube OD. Chart indicates coupling sizes currently available from Klo-Shure®. All metal parts have Tri-Valent plating.

** Note: Nominal pipe OD listed in parenthesis.

9-SERIES STRUT MOUNT INSULATION COUPLINGS FOR METRIC PIPE

Includes Klo-Shure® Coupling, clamp halves with welded fastener and locknut. **For use with metric pipe.**



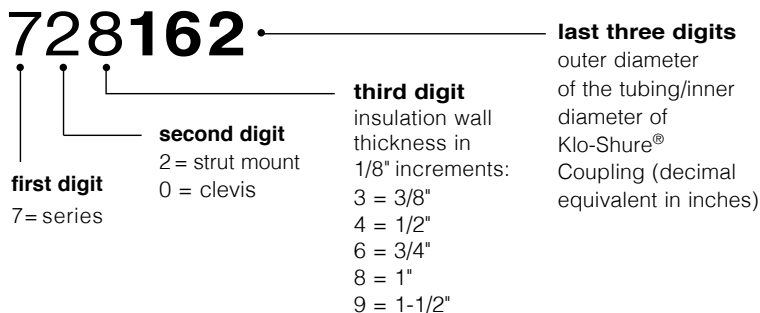
A	B	C	PART NO.	QUANTITY PER BOX
Klo-Shure® Strut Mounted Coupling for 1" wall insulation	25 mm	3.008	928M25	10
	32 mm	3.638	928M32	10
	40 mm	3.638	928M40	10
	50 mm	4.138	928M50	10
	63 mm	4.638	928M63	10
	75 mm	5.138	928M75	10
	90 mm	5.750	928M90	10

PART NUMBER SYSTEM FOR INSULATION COUPLINGS

7-SERIES STRUT MOUNT / PART NUMBER EXAMPLE:

All Klo-Shure® couplings consist of a 6-digit part number. This shows the breakdown of typical **7-SERIES** part numbers.

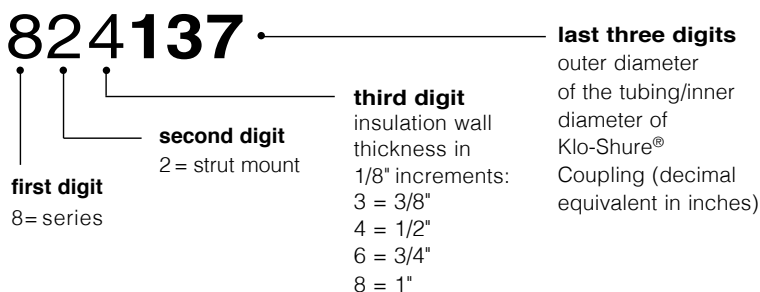
i.e. Strut mounted coupling for **1-5/8"** tube with **1"** wall insulation.



8-SERIES STRUT MOUNT / PART NUMBER EXAMPLE:

All Klo-Shure® couplings consist of a 6-digit part number. This shows the breakdown of typical **8-SERIES** part numbers.

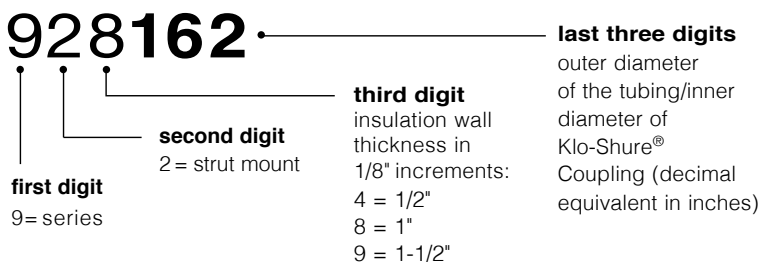
i.e. Strut mounted coupling for **1-3/8"** tube with **1/2"** wall insulation.



9-SERIES STRUT MOUNT / PART NUMBER EXAMPLE:

All Klo-Shure® couplings consist of a 6-digit part number. This shows the breakdown of typical **9-SERIES** part numbers.

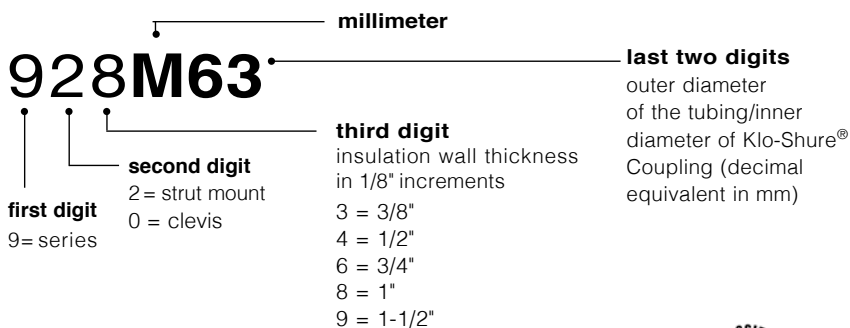
i.e. Strut mounted coupling for **1-5/8"** tube with **1"** wall insulation



9-SERIES STRUT MOUNT FOR METRIC PIPE / PART NUMBER EXAMPLE:

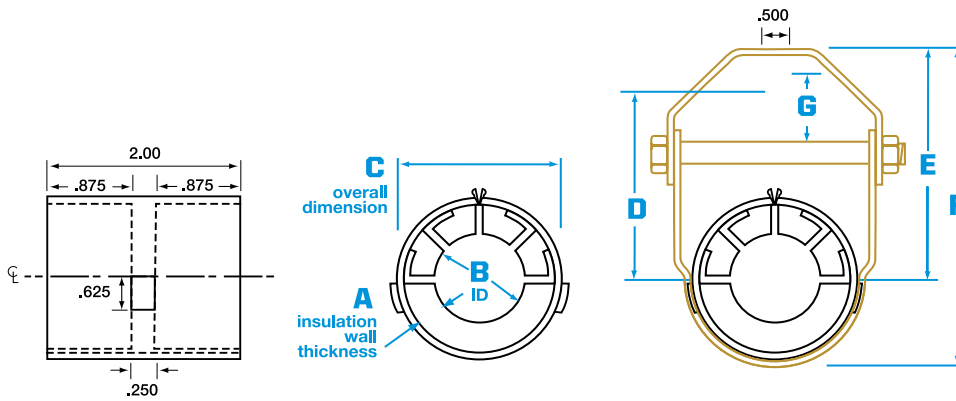
All Klo-Shure® couplings consist of a 6-digit part number. This shows the breakdown of typical **9-SERIES FOR METRIC PIPE** part numbers.

i.e. Strut mounted coupling for **63mm** pipe with **1"** wall insulation



CLEVIS HANGER INSULATION COUPLINGS

Klo-Shure® clevis hanger system includes clevis hanger, plastic coupling and fastening clip.



coupling "C" dimension	material size	cross bolt size	max recommended load/lbs
2.12 to 3.25	14 ga. x 1.25	5/16"	250
3.50 to 5.75	12 ga. x 1.25	5/16"	350

A	B	C	D	E	F	G	PART NO.
Klo-Shure® Clevis Hanger Coupling for 3/8" wall insulation	1/4" OD	1.12	-	-	-	-	703025
	3/8" OD	1.25	-	-	-	-	703037
	1/2" OD	1.37	-	-	-	-	703050
	5/8" OD	1.50	-	-	-	-	703062
	3/4" OD	1.62	-	-	-	-	703075
	7/8" OD	1.75	2-1/2	3-3/8	4-3/8	7/16	703087*
	1" OD	1.87	2-5/8	3-7/16	4-1/2	1/2	703100*
	1-1/8" OD	2.00	2-7/8	3-1/2	4-5/8	5/8	703112*
	1-3/8" OD	2.25	3-3/16	3-13/16	5	15/16	703137*
	1-5/8" OD	2.50	3-1/2	4	5-1/2	1-1/16	703162*
2-1/8" OD	3.00	4-3/16	4-3/4	6-1/2	1-5/16	703212*	

A	B	C	D	E	F	G	PART NO.
Klo-Shure® Clevis Hanger Coupling for 1/2" wall insulation	3/8" OD	1.50	-	-	-	-	704037
	1/2" OD	1.62	-	-	-	-	704050
	5/8" OD	1.75	2-1/2	3-3/8	4-3/8	7/16	704062*
	3/4" OD	1.87	2-5/8	3-7/16	4-1/2	1/2	704075*
	7/8" OD	2.00	2-7/8	3-1/2	4-5/8	5/8	704087*
	1" OD	2.12	3	3-5/8	4-7/8	7/8	704100*
	1-1/8" OD	2.25	3-3/16	3-13/16	5	15/16	704112*
	1-3/8" OD	2.50	3-1/2	4	5-1/2	1-1/16	704137*
	1-5/8" OD	2.75	3-3/4	4-3/8	5-7/8	1-1/4	704162*
	2-1/8" OD	3.25	4-1/2	5-1/8	6-7/8	1-7/16	704212*
	2-5/8" OD	3.75	5	5-5/8	7-5/8	1-11/16	704262*
	3-1/8" OD	4.25	5-13/16	6-7/16	8-3/4	2-1/8	704312*
	3-5/8" OD	4.75	6-5/16	6-7/8	9-3/8	2-15/16	704362*
4-1/8" OD	5.25	6-7/8	7-1/2	10-1/8	2-9/16	704412*	
Klo-Shure® Clevis Hanger Coupling for 3/4" wall insulation	1/4" OD	1.87	2-5/8	3-7/16	4-1/2	1/2	706025*
	3/8" OD	2.00	2-7/8	3-1/2	4-5/8	5/8	706037*
	1/2" OD	2.12	3	3-5/8	4-7/8	7/8	706050*
	5/8" OD	2.25	3-3/16	3-13/16	5	15/16	706062*
	3/4" OD	2.37	3-5/16	3-15/16	5-1/4	1	706075*
	7/8" OD	2.50	3-1/2	4	5-1/2	1-1/16	706087*
	1-1/8" OD	2.75	3-3/4	4-3/8	5-7/8	1-1/4	706112*
	1-3/8" OD	3.00	4-3/16	4-3/4	6-1/2	1-5/16	706137*
	1-5/8" OD	3.25	4-1/2	5-1/8	6-7/8	1-7/16	706162*
	2-1/8" OD	3.75	5	5-5/8	7-5/8	1-11/16	706212*
	2-5/8" OD	4.25	5-13/16	6-7/16	8-3/4	2-1/8	706262*
	3-1/8" OD	4.75	6-5/16	6-7/8	9-3/8	2-5/16	706312*
	3-5/8" OD	5.25	6-7/8	7-1/2	10-1/8	2-9/16	706362*
4-1/8" OD	5.75	7-1/4	7-7/8	10-3/4	2-3/4	706412*	
Klo-Shure® Clevis Hanger Coupling for 1" wall insulation	5/8" OD	2.75	3-3/4	4-3/8	5-7/8	1-1/4	708062*
	7/8" OD	3.00	4-3/16	4-3/4	6-1/2	1-5/16	708087*
	1-1/8" OD	3.25	4-1/2	5-1/8	6-7/8	1-7/16	708112*
	1-3/8" OD	3.50	4-3/4	5-3/8	7-1/4	1-9/16	708137*
	1-5/8" OD	3.75	5	5-5/8	7-5/8	1-11/16	708162*
	2-1/8" OD	4.25	5-13/16	6-7/16	8-3/4	2-1/8	708212*
	2-5/8" OD	4.75	6-5/16	6-7/8	9-3/8	2-5/16	708262*
	3-1/8" OD	5.25	6-7/8	7-1/2	10-1/8	2-9/16	708312*
	3-5/8" OD	5.75	7-1/4	7-7/8	10-3/4	2-3/4	708362*

Note: Klo-Shure® ID equals copper tube OD. Chart indicates coupling sizes currently available from Klo-Shure®. Plastic coupling available without clevis hanger. Contact factory for price and availability. * Part number includes metal clevis hanger. All metal parts have Tri-Valent plating.



TITAN® INSULATION RISER CLAMP SERIES

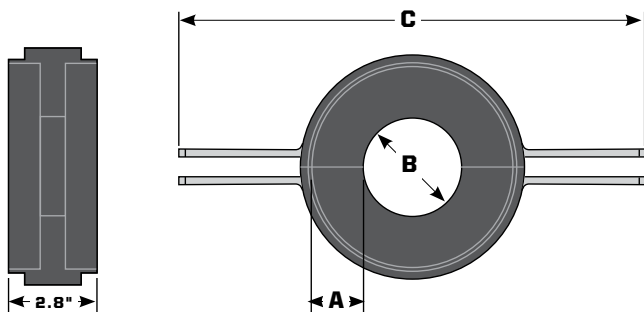


The patented Titan riser is made to fit insulated pipe and create a clean vapor barrier on vertical pipe runs. Klo-Shure Titan riser will dramatically improve the fit and finish of insulated tube and pipe runs.



Features:

- Meets the 25/50 flame spread/smoke developed index
- Superior vapor barrier
- Three times faster installation of insulation
- Crush resistant design
- Dramatically improved finished appearance of insulated tube and pipe runs
- Eliminates insulation compression
- Available for 7/8" to 4-1/8" OD tube
- Insulation wall thickness from 1" to 1-1/2"
- Molded with high strength TPO plastic
- Vertical load rating range: Up to 2400 lbs.



A	B	C	PART NO.	LOAD DATA*
1" wall insulation	7/8" OD	10.125	R087100	200 lb
	1-1/8" OD	10.875	R112100	400 lb
	1-3/8" OD	11.500	R137100	800 lb
	1-5/8" OD	11.500	R162100	800 lb
	2-1/8" OD	11.500	R212100	1,400 lb
	2-5/8" OD	12.500	R262100	1,600 lb
	3-1/8" OD	12.500	R312100	2,100 lb
	4-1/8" OD	13.800	R412100	2,400 lb
1-1/2" wall insulation	7/8" OD	10.875	R087150	300 lb
	1-1/8" OD	10.875	R112150	400 lb
	1-3/8" OD	11.500	R137150	600 lb
	1-5/8" OD	11.500	R162150	900 lb
	2-1/8" OD	12.000	R212150	1,400 lb
	2-5/8" OD	12.000	R262150	900 lb
	3-1/8" OD	13.000	R312150	1,400 lb
	4-1/8" OD	15.625	R412150	2,200 lb

* Load data based on 200 inch/lb. torque.

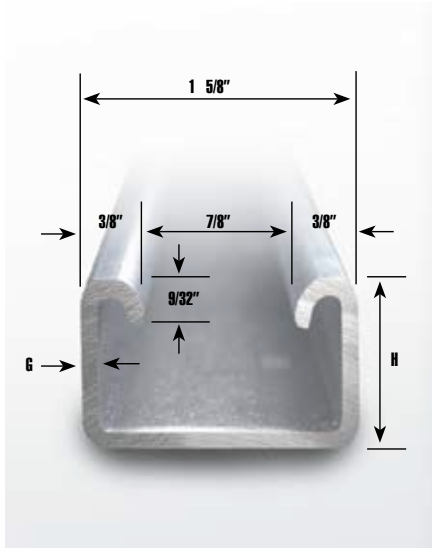


Upper floor insulation from above.

Riser clamp assembly secures and supports the weight of pipe or tubing.

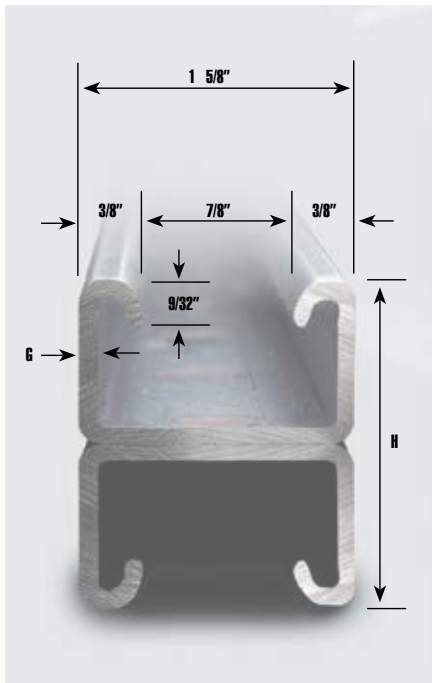
Pipe or tubing and insulation come up through floor.

ANCHOR CHANNEL PART NUMBERS AND SPECIFICATIONS



SINGLE

PART NO.	HEIGHT (H)	GAUGE (G)
121036-1-203	1"	12 GA.
121048-1-203	1"	12 GA.
121120-1-203	1"	12 GA.
121036-1-202	7/8"	12 GA.
121048-1-202	7/8"	12 GA.
121120-1-202	7/8"	12 GA.
121048-1-101	13/16"	14 GA.
121120-1-101	13/16"	14 GA.
121048-5-101	13/16"	14 GA.
121120-5-101	13/16"	14 GA.
121048-6-101	13/16"	14 GA.
121120-6-101	13/16"	14 GA.



DOUBLE

PART NO.	HEIGHT (H)	GAUGE (G)
122048-1-203	2"	12 GA.
122120-1-203	2"	12 GA.
122048-1-202	1 3/4"	12 GA.
122120-1-202	1 3/4"	12 GA.
122048-1-101	1 5/8"	14 GA.
122120-1-101	1 5/8"	14 GA.
122048-5-101	1 5/8"	14 GA.
122120-5-101	1 5/8"	14 GA.
122048-6-101	1 5/8"	14 GA.
122120-6-101	1 5/8"	14 GA.

MATERIAL	LENGTH
Steel	36"
Steel	48"
Steel	120"
Steel	36"
Steel	48"
Steel	120"
Steel	48"
Steel	120"
304 SS	48"
304 SS	120"
316 SS	48"
316 SS	120"

- All channel widths are 1-5/8"
- All steel channel shipped with plain finish (hot rolled p.o.)
- Lengths listed are stock sizes. Special lengths are available; please contact your local distributor or the factory.
- All special cut tolerances are $\pm 1/8$ "

MATERIAL	LENGTH
Steel	48"
Steel	120"
Steel	48"
Steel	120"
Steel	48"
Steel	120"
304 SS	48"
304 SS	120"
316 SS	48"
316 SS	120"

- All channel widths are 1-5/8"
- All steel channel shipped with plain finish (hot rolled p.o.)
- Lengths listed are stock sizes. Special lengths are available; please contact your local distributor or the factory.
- All special cut tolerances are $\pm 1/8$ "

HYDRA-ZORB® COMPONENT PARTS LIST*

PART NUMBER OD TUBE SERIES	OD Tube Size	PART NUMBER NOM PIPE SIZE	Nom Pipe Size	PART NUMBER MM SERIES	mm Size	CUSHION NUMBER	CUSHION ID SIZE (Inches)	CUSHION ID SIZE (mm)	CLAMP NUMBER	CLAMP SIZE (Inches)	FASTENER
100025	1/4"			6MMHZ	6	1 .250	0.250	6.3	101037	0.375	1/4-20
100031	5/16"			8MMHZ	8	1 .312	0.312	7.9	101050	0.500	1/4-20
100037	3/8"			10MMHZ	10	1 .375	0.375	9.5	101050	0.500	1/4-20
100047	.47"			12MMHZ	12	1 .470	0.470	11.9	101062	0.625	1/4-20
100050	1/2"			13MMHZ	13	1 .500	0.500	12.7	101062	0.625	1/4-20
		200025	1/4"	14MMHZ	14	2 .250	0.540	13.7	101067	0.675	1/4-20
				15MMHZ	15	1 .625	0.625	15.9	101067	0.675	1/4-20
100062	5/8"			16MMHZ	16	1 .625	0.625	15.9	101075	0.750	1/4-20
		200037	3/8"	17MMHZ	17	2 .375	0.675	17.1	101084	0.840	1/4-20
				18MMHZ	18	2 .375	0.675	17.1	101087	0.875	1/4-20
100075	3/4"			19MMHZ	19	1 .750	0.750	19.0	101100	1.000	1/4-20
				20MMHZ	20	1 .750	0.750	19.0	101100	1.000	1/4-20
		200050	1/2"	21	21	2 .500	0.840	21.3	101112	1.125	1/4-20
100087	7/8"			22MMHZ	22	1 .875	0.875	22.2	101112	1.125	1/4-20
				25MMHZ	25	1 1.00	1.000	25.0	100125	1.250	1/4-20
100100	1"			26MMHZ	26	1 1.00	1.000	25.4	101125	1.250	1/4-20
		200075	3/4"	27MMHZ	27	2 .750	1.050	28.0	101137	1.375	1/4-20
100112	1-1/8"			28MMHZ	28	1 1.12	1.125	29.2	101137	1.375	1/4-20
100119	1.19"			30MMHZ	30	1 1.19	1.190	30.2	101150	1.500	1/4-20
100125	1-1/4"			32MMHZ	32	1 1.25	1.250	31.8	101150	1.500	1/4-20
		200100	1"	34MMHZ	34	2 1.00	1.315	33.5	101175	1.750	5/16-18
100137	1-3/8"			35MMHZ	35	1 1.37	1.375	34.9	101162	1.620	5/16-18
100150	1-1/2"			38MMHZ	38	1 1.50	1.500	38.1	101175	1.750	5/16-18
				40MMHZ	40	1 1.50	1.500	40.0	101187	1.870	5/16-18
100162	1-5/8"			41	41	1 1.62	1.625	41.1	101187	1.870	5/16-18
		200125	1-1/4"	42MMHZ	42	2 1.25	1.660	42.2	101200	2.000	5/16-18
100175	1-3/4"			45MMHZ	45	1 1.75	1.750	44.5	101200	2.000	5/16-18
100187	1-7/8"	200150	1-1/2"	48MMHZ	48	2 1.50	1.900	48.2	101225	2.250	5/16-18
				50MMHZ	50	1 2.00	2.000	50.0	101225	2.250	5/16-18
100200	2"			51MMHZ	51	1 2.00	2.000	50.8	101225	2.250	5/16-18
100212	2-1/8"			54MMHZ	54	1 2.12	2.125	54.1	101250	2.500	5/16-18
100225	2-1/4"			57	57	1 2.25	2.250	57.1	101275	2.750	5/16-18
100237	2-3/8"	200200	2"	60MMHZ	60	2 2.00	2.375	60.4	101275	2.750	5/16-18
				63MMHZ	63	1 2.50	2.500	63.0	101300	3.000	5/16-18
100251	2-1/2"			64MMHZ	64	1 2.50	2.500	63.5	101300	3.000	5/16-18
100262	2-5/8"			66MMHZ	66	1 2.62	2.625	66.5	101300	3.000	5/16-18
	2-7/8"	200250	2-1/2"	72MMHZ	72	2 2.50	2.875	73.2	101325	3.250	5/16-18
				75MMHZ	75	1 3.00	3.000	75.0	101337	3.370	5/16-18
100300	3"			77	77	1 3.00	3.000	76.2	101350	3.500	5/16-18
100312	3-1/8"			80MMHZ	80	1 3.12	3.120	79.2	101350	3.500	5/16-18
100337	3-3/8"			86	86	2 3.00	3.370	88.9	101375	3.750	3/8-16
	3-1/2"	200300	3"	90MMHZ	90	2 3.00	3.500	88.9	101387	3.875	3/8-16
100362	3-5/8"			92	92	2 3.00	3.625	88.9	101400	4.000	3/8-16
100400	4"	200350	3-1/2"	102	102	2 3.50	4.000	101.6	101450	4.500	3/8-16
100412	4-1/8"			105	105	2 3.50	4.120	105.0	101462	4.625	3/8-16
100425	4-1/4"			108	108	2 3.50	4.250	108.0	101475	4.750	3/8-16
100431				110MMHZ	110	2 4.00	4.310	111.0	101487	4.875	3/8-16
100437	4-3/8"			111	111	2 4.00	4.370	111.0	101487	4.875	3/8-16
	4-1/2"	200400	4"	113	113	2 4.00	4.500	113.0	101500	5.000	3/8-16
100462	4-5/8"			118	118	2 4.00	4.620	118.0	101512	5.125	3/8-16
100492				125MMHZ	125	2 4.00	4.920	125.0	101550	5.500	3/8-16
100500	5"			127	127	1 5.12	5.000	127.0	101550	5.500	3/8-16
100512	5-1/8"			130	130	1 5.12	5.125	130.0	101550	5.500	3/8-16
		200500	5"	141	141	2 5.00	5.563	141.2	101600	6.000	3/8-16
100600	6"			152	152	1 6.12	6.000	152.0	101637	6.375	3/8-16
100612	6-1/8"			155	155	1 6.12	6.125	155.0	101637	6.375	3/8-16
100631				160MMHZ	160	2 6.00	6.310	160.0	101637	6.375	3/8-16
100637	6-3/8"			162	162	2 6.00	6.370	162.0	101675	6.750	3/8-16
100650	6-1/2"	200600	6"	165	165	2 6.00	6.625	165.0	101700	7.000	3/8-16

* See Terms and Conditions of Sale



TERMS AND CONDITIONS OF SALE

Agreements:

All agreements are subject to availability of material, accidents, or other causes beyond our control.

Warranty:

Hydra-Zorb Co. and Klo-Shure Inc., (Company), warrants only products manufactured by Company to be free from defects for a period of 12 months from shipment date. Products must be used for their intended purpose. If goods are found to be defective, Company will replace the product but will not be responsible for labor or expense of replacing or repairing defective goods or damage resulting from same. The Company makes no other warranty of any kind, expressed or implied. Any implied warranties made by resellers of Company's product are hereby disclaimed by Company and are excluded from this warranty. Warranty will be void if Company manufactured clamps and/or cushions are substituted with components produced by other manufacturers.

Claims:

No claims for shortages allowed unless made in writing within ten days of receipt of goods. All materials sent out will be carefully examined, counted, and packed. Claims for goods damaged or lost in transit should be made on the carrier, as our responsibility ceases on delivery to the carrier.

Returns:

Complete customer satisfaction is our goal. However, if our product does not meet your expectations, we offer the following return policies:

1. Return requests must occur within 30 days of shipment. No return requests will be honored more than 30 days after the original shipment date.
2. All returns are at the discretion of the Company, and we reserve the right to limit or refuse a return for any reason.
3. Special order products cannot be returned. This includes, but is not limited to, custom labeled product, all anchor channel, and stainless steel, hot-dip galvanized and aluminum assemblies.
4. Requests to return product must be accompanied by the original invoice number, sales order number, or purchase order number on which the purchase occurred.

5. Return Material Authorization (RMA) must be issued by Company before return shipment occurs. RMA # must be clearly marked on all packages.
6. Product returns are subject to a 35% restocking fee. Parts must be in unopened, saleable condition, and include all component parts.
7. Upon receipt of the return, product will be inspected. Any parts requiring new packaging will be subject to a 50% restocking fee.
8. Return freight charges to the Company must be pre-paid by Customer.
9. Upon inspection of parts, a credit will be issued to your account which may be applied to open invoices or future invoices. Cash refunds will not be issued.
10. This Agreement and the rights and obligations of the parties hereunder shall be governed exclusively by the applicable laws of the State of Michigan. Further any and all disputes hereunder shall be resolved exclusively by the courts located in Oakland County, Michigan and the parties stipulate to exclusive jurisdiction in Oakland County, Michigan to resolve any said disputes.
11. Any and all costs and expenses of the Company, including all reasonable attorney fees, incurred in enforcing its rights hereunder shall be recoverable from Purchaser hereunder.

Terms And Design:

Subject to change without notice. Refer to current price list for terms of sale. Hydra-Zorb reserves the right to revise product design, product offerings, and catalog without notification.

Freight Terms:

All prices are F.O.B. point of shipment.

Dimensions And Weights:

Although the Company makes every attempt to be as accurate as possible, all listed dimensions and weights are approximations and are not guaranteed.

International Shipments:

Purchaser is responsible for any import duty or fees related to your purchase.





CUSHION CLAMP ASSEMBLIES & INSULATION COUPLING SYSTEMS

www.hydra-zorb.com

1751 Summit Drive | Auburn Hills, Michigan 48326

248-373-5151 | Fax: 248-373-0711

