



**The
Field Controls
Company**

Your Number One Draft Choice

2308 Airport Road
Kinston, NC 28501

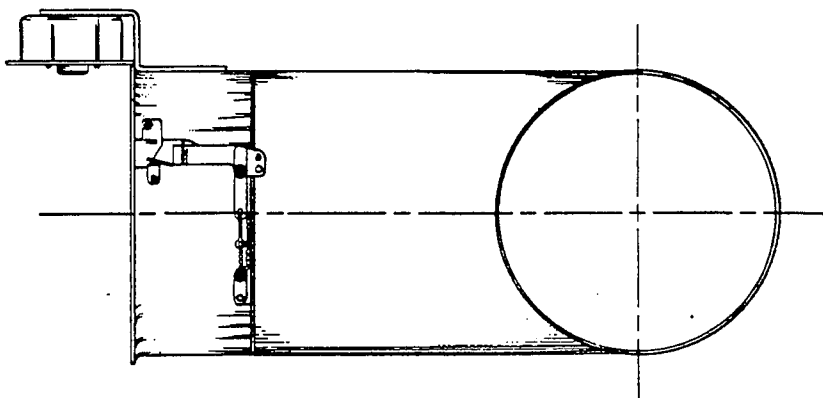
THERMAL SAFETY SWITCHES

Part No.	Mounting	Normally Closed Switch		Switch Type
		Opens	Closes	
DC01170001	Draft Control	140°F	125°F	S.P.D.T.
DC01170004	Draft Control or Draft Hood	140°F	Manual Reset	S.P.S.T.
DC01170006	Draft Control or Draft Hood	180°F	Manual Reset	S.P.S.T.

Electrical Data: (Maximum Capacity of all Switches)

Volts	Amps.
120 A.C.	12
240 A.C.	6
30 D.C.	12
125 D.C.	1

Figure 1



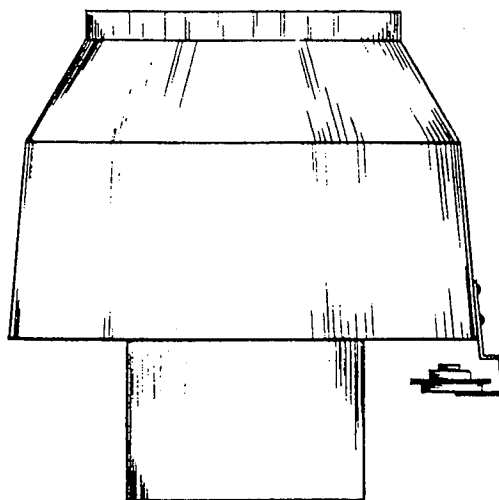
Switch Operation:

Thermal Switches are flue gas spillage safety devices. They detect spillage of flue gas products due to a blocked flue system or inadequate draft. The switch senses the spillage of hot flue gases and de-energizes the system's burner control within 2 minutes. The Automatic Reset Switch is designed to activate an optional signalling device if burner shut down occurs.

Switch Mounting:

The Thermal Switch can be mounted on either a draft control (See Figure 1) or draft hood (See Figure 2).

Figure 2



NOTE: DC01170001 Thermal Switch is a draft control mounted switch only.

The Field draft controls MG1 and M + MG2 have a hole provided on top of the ring for switch attachment. Mounting the switch onto a draft hood requires drilling of two ¼ inch dia. holes. All required mounting hardware is included. Refer to Figures 3 - 5 for bracket location.

Unit Wiring Instructions:

CAUTION: Disconnect Electrical Power when wiring.

Wire Thermal Switch in accordance with The National Electrical Code and applicable local codes. All switches should be wired in series with the gas burner control. Refer to Diagrams A and B for circuit diagrams.

DIAGRAM A: Automatic Reset (Switch DC01170001)

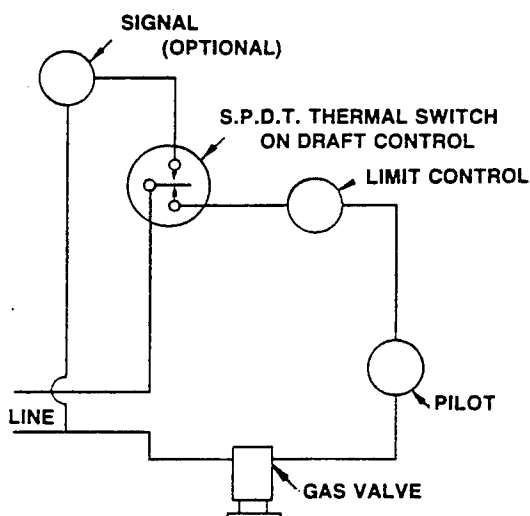
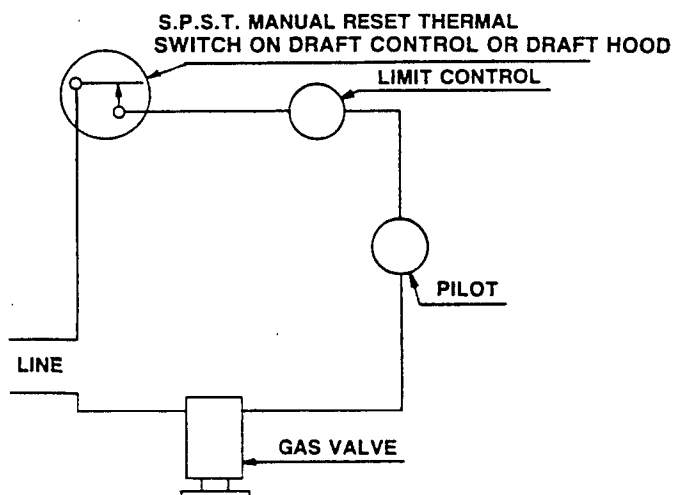


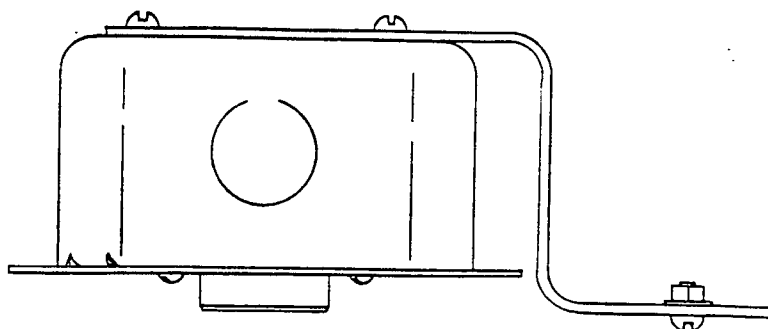
DIAGRAM B: Manual Reset (Switches DC01170004 & DC02270006)



SYSTEM CHECK-OUT PROCEDURES:

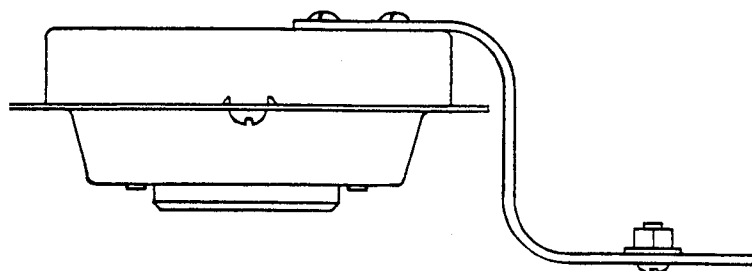
- Block chimney or vent pipe.
- Adjust thermostat to call for heat.
- Allow approximately 2 minutes for the system to back up and the gas burner to shut down.
- Perform steps B and C again.

Figure 3



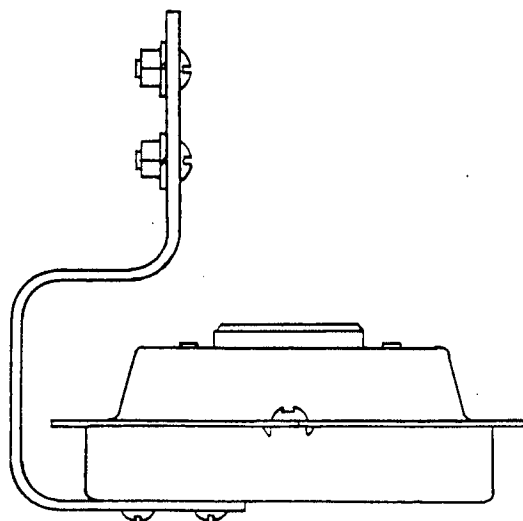
DC01170001
DRAFT CONTROL MOUNTING
AUTOMATIC RESET

Figure 4



DC01170004
DC01170006
DRAFT CONTROL MOUNTING
MANUAL RESET

Figure 5



DC01170004
DC01170006
DRAFT HOOD MOUNTING
MANUAL RESET