

SYSTEM CONTROL KIT

Model: CK-62



Designed for use on SWG Series Power Vent Hoods for controlling oil fired heating appliances with 120 VAC controls.

ITEMS INCLUDED IN KIT:

- 1- Junction box with mounted pressure switch and relay base
- 1- 120 VAC Relay
- 1- 2 Ft. Length of 1/4" aluminum tubing
- 1- 1/4" tubing connector
- 1- Flexible conduit connector
- 1- WMO-1 Secondary Safety Switch
- 1- PPC-4 Post Purge Switch

READ THESE INSTRUCTIONS CAREFULLY AND COMPLETELY BEFORE PROCEEDING WITH THE INSTALLATION.

This device **MUST** be installed by a qualified agency in accordance with the manufacturer's installation instructions. The definition of a qualified agency is: any individual, firm, corporation or company which either in person or through a representative is engaged in, and is responsible for, the installation and operation of HVAC appliances, who is experienced in such work, familiar with all the precautions required, and has complied with all the requirements of the authority having jurisdiction.

Please retain these instructions after installation.

Installed By: _____ Phone: _____ Installation Date: _____



FIELD CONTROLS

www.fieldcontrols.com

MOUNTING JUNCTION BOX

The junction box can be mounted at the venter or remotely mounted away from the venter.

(See Figure 1 & Figure 2)

1. Remove one of the knockouts from the side of the junction box where the pressure switch is mounted. Install the flexible conduit connector onto the CK-62 Junction Box and secure with fastening nut. If remote mounting the CK-62 Junction Box, mount the flexible conduit connector onto a 2" x 4" installer supplied junction box.
2. Fasten the flexible conduit from the SWG Venter into the conduit connector. Mount the CK-62 Junction box or installer supplied junction box onto the wall or floor joist without straining the flexible conduit. Fasten the CK-62 Junction Box through the four dimpled locations on the base of the box. (See Figure 3)

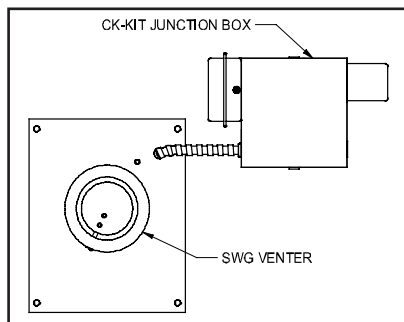


Figure 1

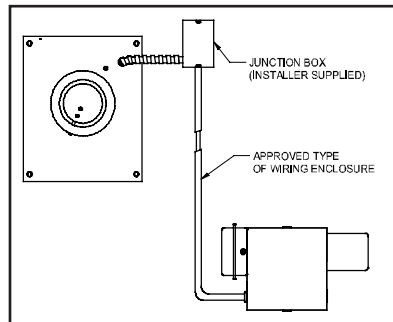


Figure 2

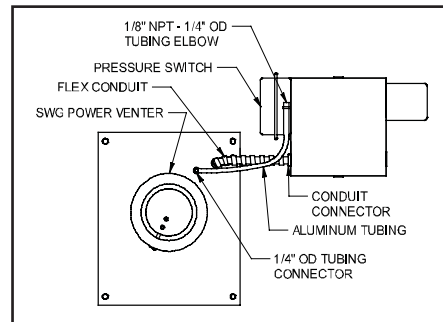


Figure 3

OIL FIRED SECONDARY SAFETY SWITCH

Installation of a SECONDARY SAFETY SWITCH is recommended for detecting flue gas spillage from a blocked flue system and/or inadequate draft.

MOUNTING IN THE VENT PIPE

SEE THE APPLIANCE MANUFACTURER'S INSTRUCTIONS FOR THE SPECIFIC LOCATION.
IF THE APPLIANCE MANUFACTURER DOES NOT SPECIFY A LOCATION, REFER TO FIGURE 5.

1. Drill or pierce a clean hole (about $\frac{3}{4}$ " diameter) in the vent pipe near the appliance outlet. (See Figure 5)
2. The heat transfer tube must have the fiber gasket installed against the mounting plate before attaching the unit to the vent pipe
3. Insert the heat transfer tube with gasket into the $\frac{3}{4}$ " diameter hole placed in the vent pipe during step 1.
4. Secure the assembly to the vent pipe with a minimum of 4 sheet metal screws. The channel must be mounted horizontally, unless specified differently by the appliance manufacturer. (See Figure 5)

⚠ WARNING: SWITCH CONNECTION CHANNEL MUST BE MOUNTED HORIZONTALLY, UNLESS SPECIFIED DIFFERENTLY BY THE APPLIANCE MANUFACTURER.

CAUTION: Disconnect electrical power supply to the appliance when wiring the blocked vent switch.

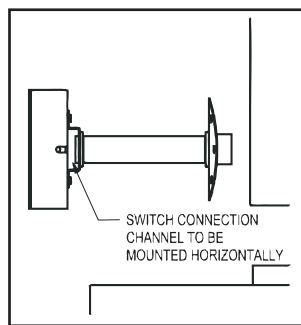


Figure 4

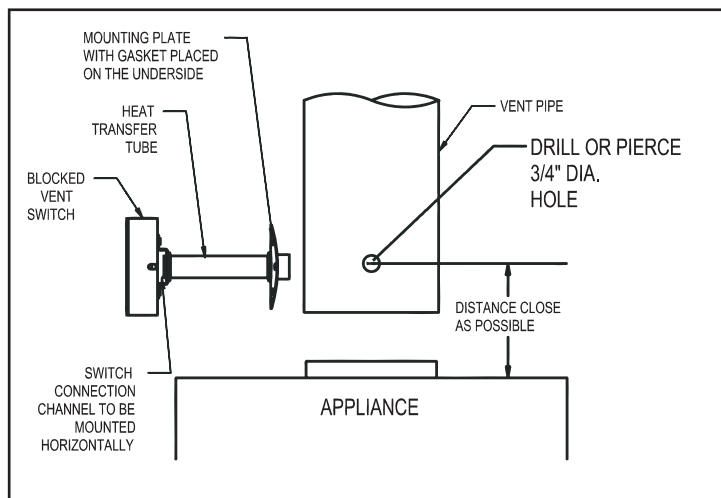


Figure 5

PPC-4 POST PURGE KIT

NOTE: All Oil Fired Appliances must have a post purge kit installed.
Installation of a POST PURGE KIT is REQUIRED for oil fired appliances for the purpose of venting combustion products after the burner has shut down. This kit has an adjustable thermally activated sensing device that continues to vent the flue system until the temperature drops below switch opening temperature.
(See Chart A)

MOUNTING THE POST PURGE SWITCH

Pierce a 1/4" diameter hole into the vent pipe and mount the POST PURGE SWITCH on the vent pipe between the barometric draft control and the appliance using the two (2) sheet metal screws. (See Figure 6)
NOTE: Wire the switch normally open. Refer to Unit Wiring Instructions.

POST PURGE TIME ADJUSTMENT PROCEDURE

- 1. Remove switch cover.
- 2. Using a screw driver, turn the adjustment screw counterclockwise to increase purge time and clockwise to decrease purge time. Adjust purge time until no flue gas smell is apparent after venter stops.
(See Figure 7)

CHART A

Close on rise temperature	150°F to 200°F ± 15°F
Open on fall temperature	95°F to 130°F ± 15°F
Typical post purge time should be 3 to 5 minutes	

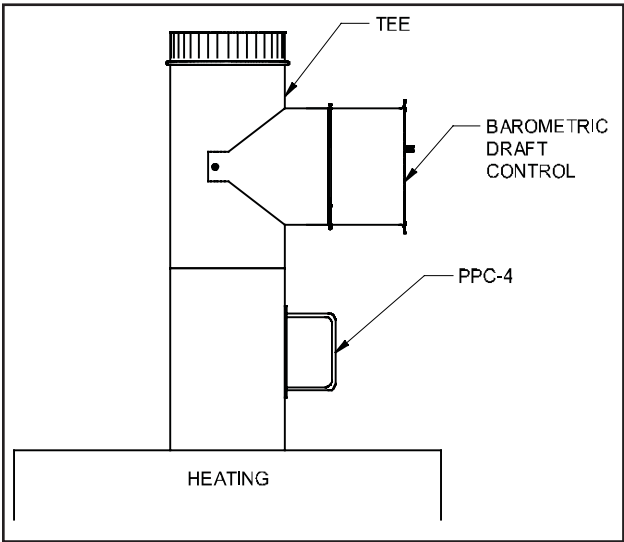


Figure 6

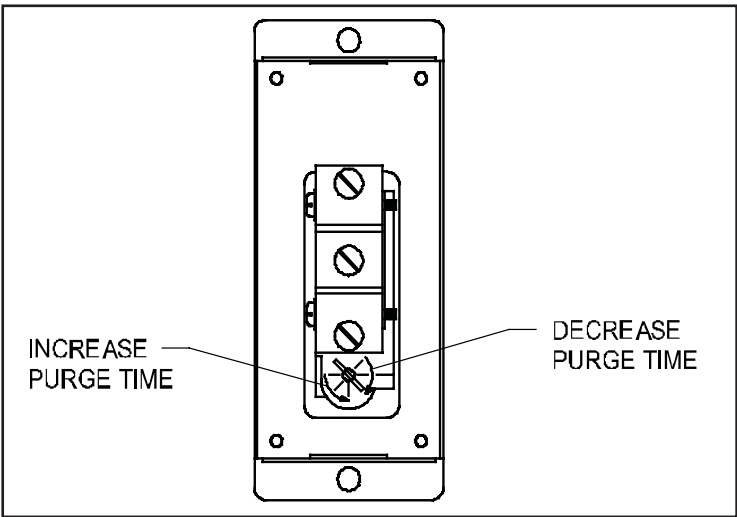


Figure 7

WIRING INSTRUCTIONS

Wire the venter motor and controls in accordance with the National Electrical Code, manufacturer's recommendations and/or applicable local codes. **UNIT MUST BE GROUNDED.** Check ground circuit to make certain that the unit has been properly grounded. The wiring should be protected by an over current circuit device rated at 15 amperes. **CAUTION** must be taken to ensure that the wiring does not come into contact with any heat source. All line voltage and safety control circuits between the venter and the appliance **MUST** be wired in accordance with the National Electrical Code for Class I wiring or equivalent methods.

Route the venter motor and control wiring with an appropriate wiring method. Refer to the Wiring Diagrams A through E.

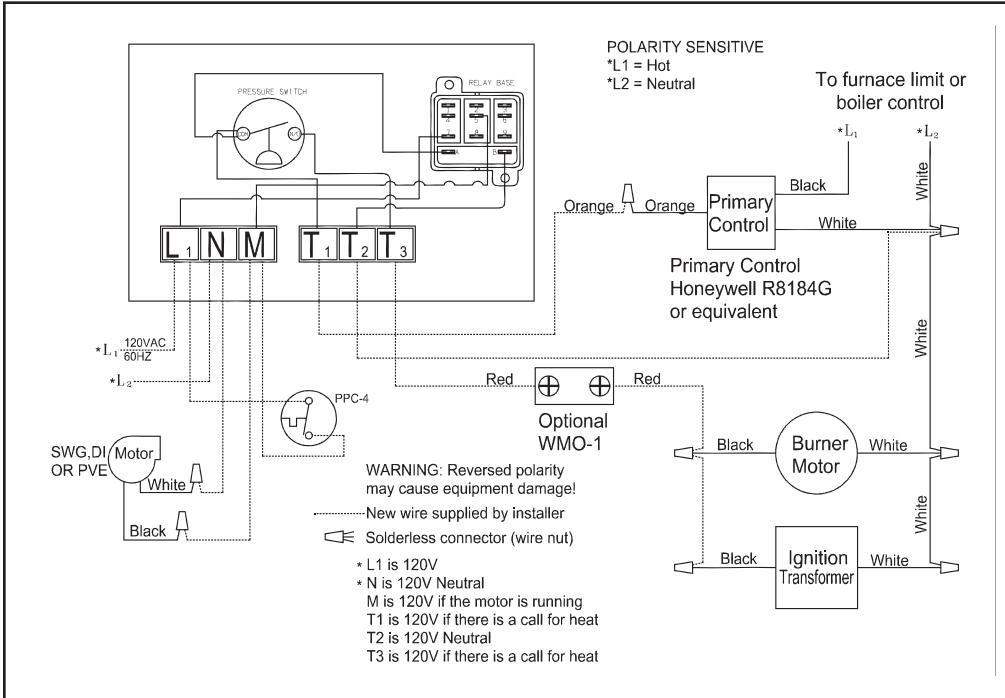


Diagram A- Oil Fired System: Single Unit Wiring

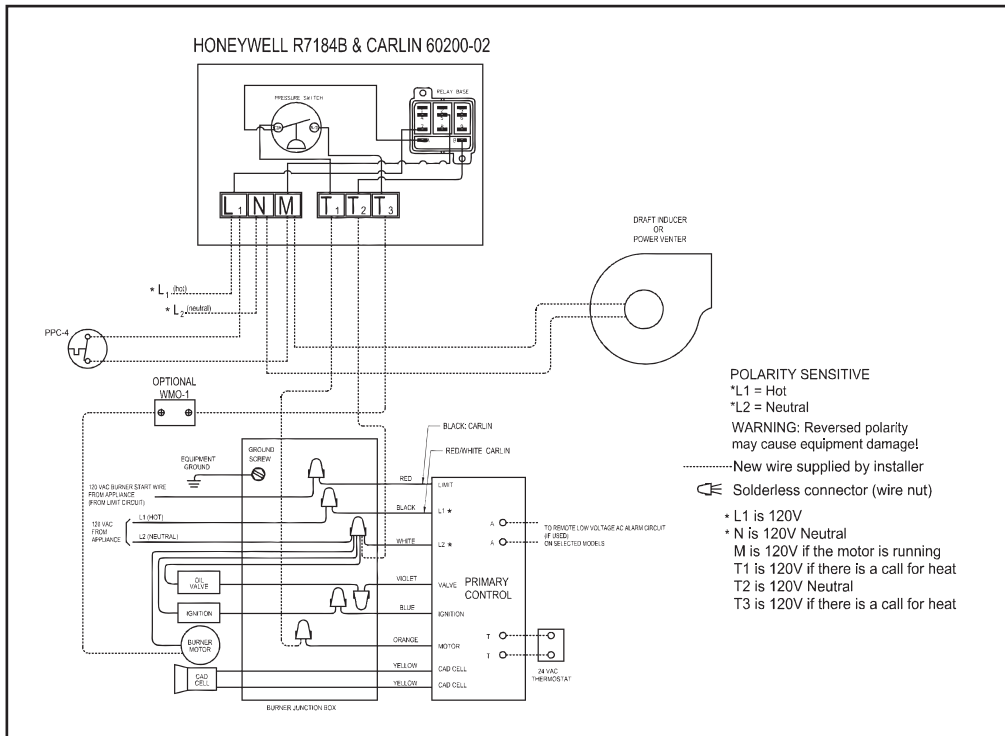


Diagram B- Oil Fired System: Wiring with Electronic Primary

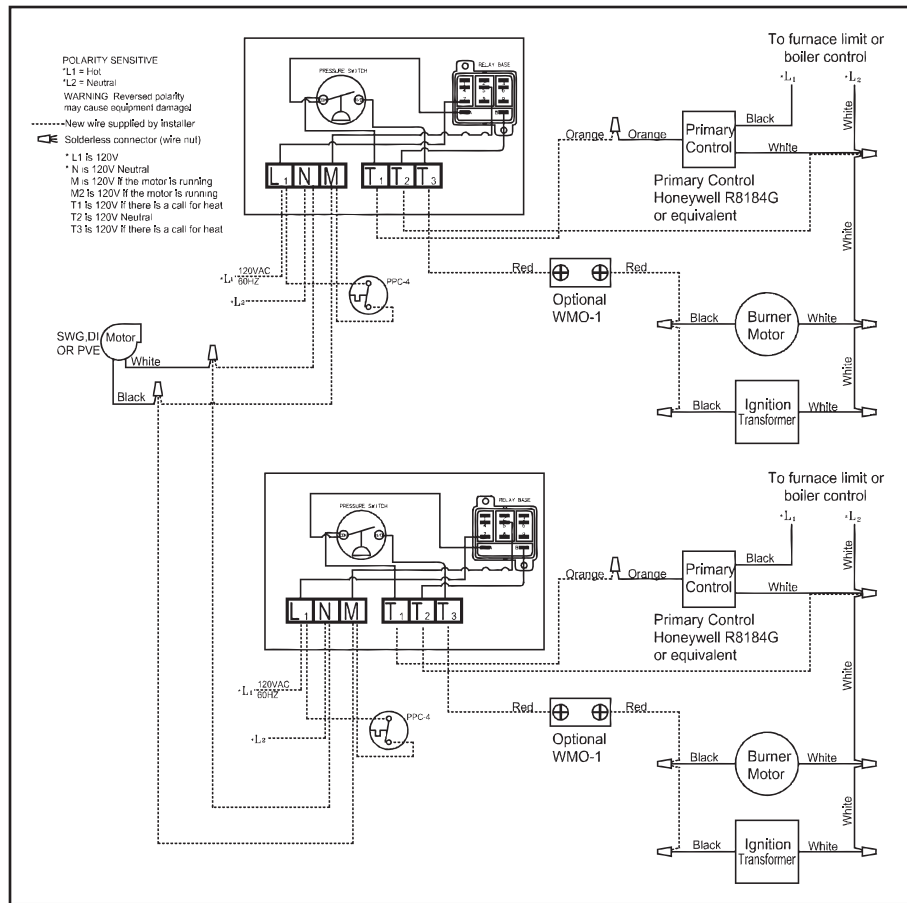


Diagram E- Multiple Oil Fired Systems

PRESSURE SWITCH SENSING TUBE INSTALLATION

1. Attach the 1/4" tubing connector to the pressure tube on the SWG Venter. (See Figure 3)
2. Connect the supplied 1/4" aluminum tubing to the tubing connector. Route the tubing to the CK-62 Junction Box and connect the tubing to the pressure switch. When routing the tubing avoid kinking the tubing by bending the tubing too sharply.

For remote mounted CK-62 Junction Box, use a 1/4" OD copper, aluminum or plastic tubing and route the tubing to avoid contact with any heat source. Refer to the SWG Venter installation instructions for setting system airflow.

PRESSURE SWITCH ADJUSTMENTS

With the venter air flow set and the appliance operating at the best operating efficiency, adjust the pressure switch by rotating the adjustment screw clockwise until the burner shuts off, then rotate the adjustment screw counterclockwise until the burner fires. Rotate the adjustment screw an additional 1/4 turn counterclockwise to ensure proper switch setting. (See Figure 8)

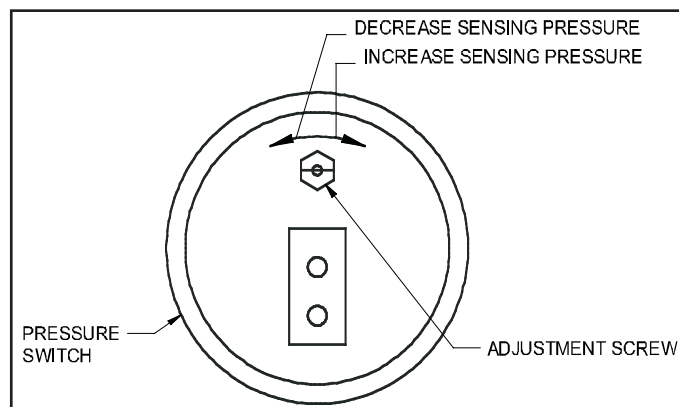


Figure 8

SYSTEM CONTROL CHECK OUT PROCEDURES

1. Adjust the thermostat to call for heat and observe the power venting system for proper operation sequence.
(Repeat if necessary)
 - a. Thermostat calls for heat.
 - b. Relay is energized and venter motor starts.
 - c. Pressure switch closes and burner starts.
 - d. Thermostat is satisfied, burner stops and venter motor should operate for approximately 3 to 5 minutes.
2. While system is operating, disconnect power to the venter motor. This should open the pressure switch contacts and stop burner operation.
3. (If WMO-1 switch is installed) Allow vent system to cool. Disconnect the vent pipe between the venter inlet and the appliance outlet. Block the vent pipe with a noncombustible material. Activate the heating system with the main burner operating. Allow approximately 2 minutes or less for the secondary safety switch to deactivate the burner. Reset safety switch and repeat.

TROUBLE SHOOTING HINTS

1. Main burner does not fire when thermostat calls for heat with venter operating.
 - a. Check pressure switch adjustment.
 - b. Check fuel flow.
 - c. Check wiring connections between pressure switch and burner.
 - d. Check pressure switch for continuity across terminals, during venter operation.
2. Venter does not activate when thermostat calls for heat.
 - a. Jump wire the terminals L1 and M to ensure motor operation.
 - b. Check wiring.
3. Flue gas odor.
 - a. Check system draft.
 - b. Check post purge venting time.
 - c. Check for negative pressure in building.

MAINTENANCE

1. **Motor:** Inspect motor once a year; the motor should rotate freely.
2. **Wheel:** Inspect venter wheel annually. For oil fired heating systems, clear any soot, ash or coating which inhibits either rotation or air flow. Remove all foreign material before operating.
3. **Vent System:** Inspect all vent pipe connections annually for looseness and for evidence of flue gas leakage. Seal or tighten pipe connections if necessary.

LIMITED WARRANTY

Field Controls, LLC ("Company") warrants that its products shall be free from defects in material and workmanship under normal use for the limited period indicated, **from the date of manufacture, subject to the provisions 1-8 below.**

Eighteen (18) months

All Field Controls Products (except for those listed below as 5 years or 90 days).

Five (5) years

Field Controls Direct Vent Systems (FDVS), Field Oil Vent Kits (FOVP), and ComboVents (CV).

Field Controls warrants that the products listed below shall be free from defects in material and workmanship under normal use for the limited period indicated, **from the date of purchase by the consumer, subject to the provisions 1-8 below.**

Ninety (90) days

UV lamps/bulbs

Provisions:

1. During the limited warranty period, Company, or its authorized service representative, will repair or replace, at Company's option, without charge, a defective Product. Product that is repaired may be repaired with new or refurbished replacement parts. Product that is replaced may be replaced with a new or refurbished product of the same or similar design. Company will return repaired or replacement Product to customer in working condition. Labor charges are not covered as part of the limited warranty.
2. With regard to UV lamps/bulbs, customer shall be required to include a "valid proof of purchase" (sales receipt) identifying the Product purchased (Product model or accurate date code information) and the date the Product(s) was purchased.
3. Product whose warranty/quality stickers, Product serial number plates or electronic serial numbers have been removed, altered or rendered illegible shall not be covered under the limited warranty.
4. Defective Product must be returned to Company, postage prepaid.
5. IN NO EVENT SHALL COMPANY BE LIABLE FOR ANY INDIRECT, SPECIAL, INCIDENTAL, CONSEQUENTIAL, OR SIMILAR DAMAGES (INCLUDING, BUT NOT LIMITED TO, LOST PROFITS OR REVENUE, INABILITY TO USE PRODUCT, OR OTHER ASSOCIATED EQUIPMENT, THE COST OF SUBSTITUTE EQUIPMENT, AND CLAIMS BY THIRD PARTIES) RESULTING FROM THE USE OF PRODUCT. Some states do not allow the exclusion or limitation of incidental or consequential damages, so the above limitation or exclusion may not apply to you.
6. THIS WARRANTY AND REMEDIES ARE EXCLUSIVE AND IN LIEU OF ALL OTHER WARRANTIES, REMEDIES AND CONDITIONS, WHETHER ORAL, WRITTEN, EXPRESS, STATUTORY OR IMPLIED. TO THE EXTENT PERMITTED BY LAW, COMPANY DISCLAIMS ALL IMPLIED AND STATUTORY WARRANTIES, INCLUDING WARRANTIES OF MERCHANTABILITY AND FITNESS FOR A PARTICULAR PURPOSE.
7. Company makes no warranty of any kind in regard to other manufacturer's products distributed by Company. Company will pass on all warranties made by the manufacturer and where possible, will expedite the claim on behalf of the customer, but ultimately, responsibility for disposition of the warranty claim lies with the manufacturer.
8. Product that has been subjected to misuse, accident, shipping or other physical damage, improper installation or application, abnormal operation or handling, neglect, fire, water or other liquid intrusion are not covered by the warranty.



FIELD CONTROLS

Phone: 252.522.3031 • Fax: 252.522.0214
www.fieldcontrols.com