



CROWN BOILER BERMUDA

GAS-FIRED STEAM BOILER

Designed for reliability, efficiency and performance. For residential and small commercial applications with approved chimney.

- ♦ Cast iron heat exchanger
- ♦ Stainless steel burners
- ♦ Built-in draft diverter to fit low spaces
- ♦ Automatic vent damper included*
- ♦ Attractive, rugged jacket
- ♦ Fully assembled or available as knock-down package
- ♦ Ten sizes from 69 to 379 MBH
- ♦ Designed for installation on combustible floors

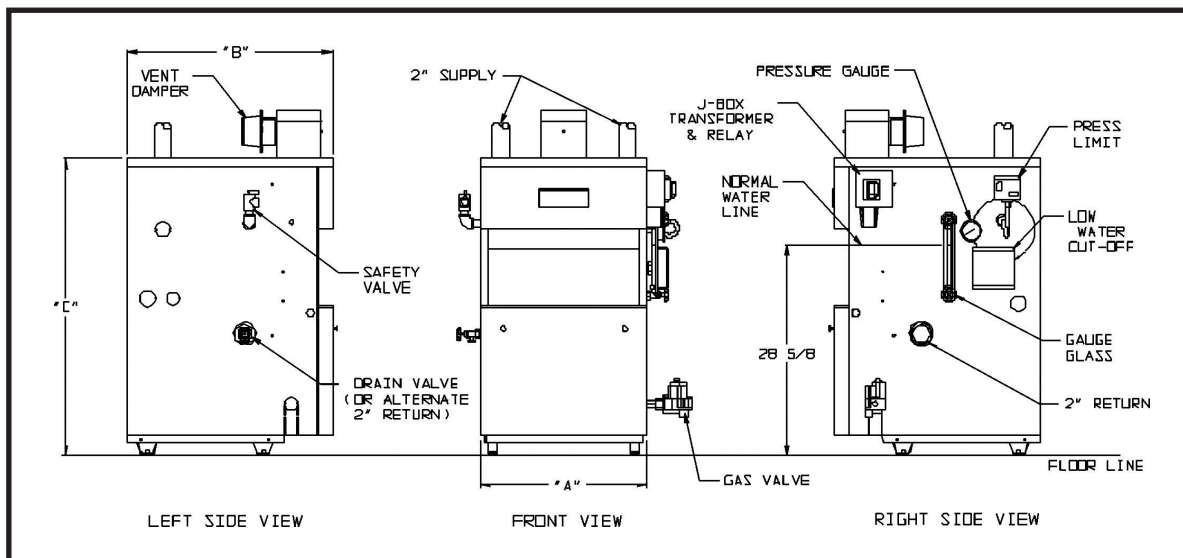
*BSI069 through BSI276

See back side for piping configurations.



BSI SERIES - BERMUDA

TECHNICAL SPECIFICATIONS



MODEL	NO. OF SECS	NATURAL OR LP GAS				AFUE %	APPROX. SHIPPING WEIGHT (PKG)	DIMENSIONS (INCHES)			
		INPUT (MBH)	HEATING CAPACITY (MBH)	AHRI NET RATING (STEAM)				A	B	C	FLUE COLAR DIAMETER
				SQ. FT.	MBH						
BSI069	3	69	57	179	43	81.9	354	12-3/4	28	40-7/16	4
BSI103	4	103	85	267	64	82.0	432	16	28	40-7/16	5
BSI138	5	138	113	354	85	82.0	504	19-1/4	28	40-7/16	6
BSI172	6	172	142	446	107	82.1	589	22-1/2	28	40-7/16	6
BSI207	7	207	171	533	128	82.1	669	25-3/4	30	40-7/16	7
BSI241†	8	241	199	621	149	82.2	745	29	30	40-7/16	7
BSI276†	9	276	229	708	172	82.2	826	32-1/4	30	40-7/16	8
BSI311†*	10	310	240	790	180	77.5**	957	35-1/2	30	45-7/16	8
BSI346†*	11	345	267	879	200	77.5**	1044	38-3/4	30	45-7/16	9
BSI380†*	12	379	294	966	221	77.5**	1125	42	30	45-7/16	9

1. USA - For altitudes above 2,000 ft. ratings should be reduced at the rate of 4% for each 1,000 ft above sea level.

†Available as semi-packaged boiler

*Not available for elevations above 2,000 ft. or for use with LP gas

**Thermal efficiency

All residential cast iron steam boilers include a full one-year warranty. A 12-year limited warranty is provided for the heat exchanger. A 5-year and a 10-year extended warranty covering parts and labor are also available. Visit CrownBoiler.com or see your warranty for complete details.



The Mega-Stor® indirect water heater utilizes the energy created by your boiler to produce abundant hot water for your home. Mega-Stor water heaters come in a variety of sizes from 26 to 119 gallons to meet a multitude of residential and commercial needs.

ADDITIONAL FEATURES/BENEFITS

- Available with natural or LP gas
- Probe low water cut-off standard; option of float low water cut-off or low water cut-off/feeder combo
- Isolation relay simplifies thermostat wiring
- Redundant gas valve
- Roll-out switch; blocked vent switch
- Glass gauge set



Specifications are subject to change without notice.

www.crownboiler.com | Philadelphia PA

BSI - 06/13
PN 980531 - R3