

LUKJAN

METAL PRODUCTS



2007 / 2008 CATALOG

GENERAL INFORMATION

ABOUT LUKJAN

LUKJAN METAL PRODUCTS HAS BEEN MANUFACTURING AND SELLING HIGH QUALITY SHEET METAL PIPE, DUCT AND FITTINGS TO THE WHOLESALE HVAC INDUSTRY SINCE 1964. LUKJAN HAS TWO MANUFACTURING FACILITIES; A 330,000 SQ. FT. FACILITY IN CONNEAUT, OHIO AND A 250,000 SQ. FT. FACILITY IN KINGS MOUNTAIN, NC. LUKJAN REMAINS A FAMILY OWNED AND OPERATED BUSINESS FOLLOWING THESE GUIDING PRINCIPLES ESTABLISHED BY ITS FOUNDERS, ANATOL AND NATALIA LUKJANCZUK: **PROVIDE THE BEST QUALITY PRODUCT AT COMPETITIVE PRICES BACKED BY EXCEPTIONAL CUSTOMER SERVICE.** THESE SAME PRINCIPLES LIVE ON TODAY IN ALL ASPECTS OF OUR BUSINESS UNDER THE LEADERSHIP OF DAN LUKJANCZUK AND ELENA LUKJANCZUK-KELLY.



ORDERING/SCHEDULING

CUSTOMERS CAN PLACE ORDERS VIA FAX, EMAIL, PHONE OR VIA EDI. ORDERS ARE TYPICALLY FILLED WITHIN 5-10 BUSINESS DAYS. PLEASE INQUIRE REGARDING REGULAR DELIVERY SCHEDULES.

FREIGHT ALLOWANCE

FREIGHT ALLOWANCE IS DETERMINED BASED ON DELIVERY FREQUENCY, ORDER VOLUME, PRODUCT MIX AND LOCATION. PLEASE CONTACT LUKJAN CUSTOMER SERVICE OR YOUR SALES REPRESENTATIVE FOR INFORMATION REGARDING FREIGHT ALLOWANCE FOR YOUR ACCOUNT.

BOX QUANTITIES/CATALOG PRICING

PLEASE CONTACT LUKJAN CUSTOMER SERVICE OR OUR WEBSITE WWW.LUKJAN.COM FOR A COMPLETE LISTING OF ALL LUKJAN PRODUCT CODES, PRODUCT LIST PRICES AND BOX QUANTITIES. ORDERING FULL BOX QUANTITIES HELPS US PROVIDE YOU THE MOST COMPETITIVE PRICES AND FACILITATES PRODUCT HANDLING.

METAL SHIPPING RACKS

LUKJAN UTILIZES BOTH 4' AND 8' METAL SHIPPING RACKS FOR HIGH VOLUME DUCT AND PIPE PURCHASES. A SUMMARY OF OUR RACK POLICY IS AS FOLLOWS:

1. RACKS ARE PROVIDED AS A "FREE" SERVICE TO OUR WHOLESALERS/DISTRIBUTORS FOR THE HANDLING AND STORAGE OF LUKJAN PRODUCT.
2. RACKS NOT RETURNED WITHIN A REASONABLE TIME FRAME (~ 6 MONTHS) WILL BE INVOICED TO THE WHOLESALER/DISTRIBUTOR OF RECORD.
3. RACKS SENT TO CUSTOMER SITES ARE THE RESPONSIBILITY OF THE WHOLESALER/DISTRIBUTOR OF RECORD AND ARE INVOICED TO THE WHOLESALER/DISTRIBUTOR OF RECORD UPON DELIVERY.
4. RACKS ARE CURRENTLY VALUED AT \$120.00 (4') AND \$245.00 (8') AND MAY CHANGE BASED ON PREVAILING REPLACEMENT COSTS.

CUSTOMERS ARE ASKED TO CONTACT LUKJAN CUSTOMER SERVICE TO ARRANGE PICK-UP WHEN RACKS HAVE BEEN EMPTIED. CUSTOMERS ARE ASKED TO NEATLY STACK CLEARED RACKS AND PROVIDE SAFE AND EASY ACCESS FOR LUKJAN DRIVERS.

DAMAGED GOODS

PRODUCT(S) RECEIVED IN DAMAGED CONDITION CAN BE RETURNED FOR FULL CREDIT. CUSTOMERS HAVE UP TO 5 DAYS FROM THE PRODUCT DELIVERY DATE TO CONTACT CUSTOMER SERVICE AND ARRANGE FOR A RETURN AUTHORIZATION AND PICK-UP. CREDIT PENDING RETURN VERIFICATION.

RETURNS AND RESTOCKING

LUKJAN WILL, AT ITS DISCRETION, ACCEPT RETURNS FOR CREDIT PROVIDED THE PRODUCT IS IN RE-SALABLE CONDITION AND IS A STANDARD LUKJAN PART. CUSTOM MADE METAL PRODUCTS WILL NOT BE ACCEPTED. RETURNED GOODS ARE SUBJECT TO A 20% RESTOCKING AND HANDLING FEE.

ELECTRONIC DATA INTERCHANGE (EDI)

LUKJAN CURRENTLY UTILIZES EDI FOR ORDERING, ACKNOWLEDGEMENT AND INVOICING. ANY CUSTOMER INTERESTED IN UTILIZING EDI CAN CONTACT OUR CUSTOMER SERVICE TEAM OR THEIR LUKJAN SALES REPRESENTATIVE.

ELECTRONIC INFORMATION

LUKJAN ASKS, AS A BUSINESS COURTESY, THAT ALL CUSTOMERS MANAGE ANY ELECTRONIC DATA PROVIDED BY LUKJAN IN A CONFIDENTIAL MANNER.

DISCOUNTS/TERMS

PLEASE INQUIRE REGARDING DISCOUNTS FOR EARLY PAYMENTS.

PACKING SLIP/INVOICES

ITEMS APPEARING ON LUKJAN PACKING SLIPS AND INVOICES NOW MATCH THE SEQUENTIAL ORDER OF THE CUSTOMER PURCHASE ORDER, ENHANCING ACCOUNTING, BILLING RECONCILIATION AND IMPROVING ORDER RECEIPT.

BOX IDENTIFICATION

TO FURTHER IMPROVE MATERIAL HANDLING AND ORDER RECEIPT, ALL BOXED ITEMS ARE UNIQUELY IDENTIFIED TO INCLUDE THE PRODUCT BAR CODE, CUSTOMER ID, CUSTOMER PURCHASE ORDER NUMBER AND THE SEQUENCE NUMBER LISTED ON THE LUKJAN PACKING SLIP.

PRODUCT CODES

ALL ITEMS IN THIS CATALOG ARE IDENTIFIED WITH BOTH A **CATALOG CODE** (L575) AND A COMPUTER **PRODUCT CODE** (RB30). THE PRODUCT CODE IS THE LUKJAN COMPUTER PART NUMBER. THIS DUAL IDENTIFICATION IS PROVIDED TO ASSIST IN THE PROCESS OF ACCURATELY QUOTING, ORDERING AND SHIPPING OF METAL PRODUCTS. MANY ITEMS FURTHER LIST THE DETAILED NUMBERING SCHEME THAT IDENTIFIES KEY DIMENSIONS AND OR PROPERTIES OF THE ITEM.

FOR EXAMPLE:
RP05xyyz

WHERE: RP05= UNBOXED ROUND PIPE XX= PIPE DIAMETER YY= GAUGE (30, 28, 26, 24, ETC.)
ZZZ= LENGTH INCHES (012, 024, 048, 060, 120)
RP050630060 = 6" UNBOXED ROUND PIPE, 30 GAUGE, 5FT.

LUKJAN RESERVES THE RIGHT TO MAKE ADJUSTMENTS AND/OR CHANGES TO POLICIES, PRICES AND PRODUCT AVAILABILITY AT ITS DISCRETION AND WITHOUT NOTICE.

PRODUCT INDEX

SERVICE ♦ QUALITY ♦ TRUST

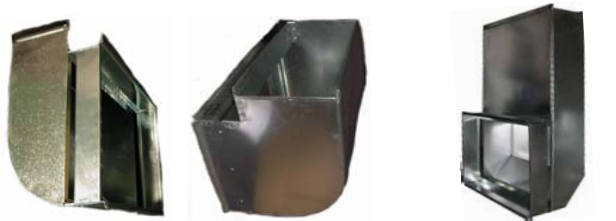
DESCRIPTION	CAT#	CODE	PG.	DESCRIPTION	CAT#	CODE	PG.	DESCRIPTION	CAT#	CODE	PG.
Alum Long Radius Elbow		AX54	12	Filter Frame		CA20	4	Stack Boot,Elb	575	SB30	14
Alum.Collar, Crimp	413A	AX11	12	Filter Frame WISE		CA72	4	Stack Boot,End	571	SB10	14
Alum.Collar, Long	416A	AX16	12	Flex Connector, Round		RX58	8	Stack Boot,Str	572	SB20	14
Alum.Collar, NC	412A	AX10	12	Flexible Duct Connector		DX36	10	Stack Conn.	604	SX35	14
Aluminum Cap		AX20	12	Frame Box		CA74	4	Stack Elbow	524	SX24	14
Aluminum Elbow		AX53	12	Fresh Air Intake		CA64	4	Stack End Cap	512	SX44	14
Aluminum Pipe		AP01	12	Furnace Boxes		CA50	4	Stack Horiz.Ang.	532	SX27	14
Angle		RX50	5	Galv. Spiro Pipe		GP01	16	Stack Horiz.Elbo.	525	SX25	14
Angles		DX18	10	Galvanized Stl. Sheets		GS01	19	Stack Starting Collar	520	SX33	14
Basement Boot	PH-1	RB45	5	Header Plate		PX05	10	Stack Vert. Angle	314	SX23	14
Black Adapter		BX60	18	Increase WC	432	RX43	15	Stack Vert.Elbow	307	SX21	14
Black Angle		BX50	18	Joist Blockoff		PX06	10	Stack, Side Takeoff	364	SX42	14
Black Cap, Incr.	452B	BX25	18	Joist Head		PX07	10	Stack, Top Takeoff	362	SX41	14
Black Cap, NC	421B	BX21	18	Mobile Home Box	573	RB55M	4	Stackhead	315	SX75	14
Black Cap, Red. NC	450B	BX23	18	O.Boot,Ang	OL577	OB40	13	Stackhead, Double	311	SX73	15
Black Cap, Red. WC	451B	BX24	18	O.Boot,Elb	OL575	OB30	13	Stackhead, Long	310	SX71	15
Black Cap, WC	422B	BX22	18	O.Boot,End	OL571	OB10	13	Stackhead, Out of Wall	313	SX74	15
Black Drawband	410B	BX01	18	O.Boot,Str	OL572	OB20	13	Stackhead, Short	302	SX70	15
Black Elbow		BX53	18	Offset St. Collar	519	DX31	11	Stainless Angle		NX50	18
Black Inceaser WC	432B	BX43	18	OffsetStk		SX94	14	Stainless Cap	421SS	NX21	18
Black Pipe		BP01	18	Oval Dble. Stackhead		OX11	13	Stainless Collar, WC	413SS	NX11	18
Black Reducer NC	431B	BX41	18	Oval Horizontal Angle		OX51	13	Stainless Connector		NX58	18
Black Reducer WC	430B	BX40	18	Oval Horizontal Elbow		OX53	13	Stainless Drawband	410SS	NX01	18
Black Tee	352B	BX70	18	Oval Pipe		OP01	13	Stainless Elbow		NX53	18
Black Trim Collar		BX10	18	Oval Stackhead		OX10	13	Stainless Incr. WC	431SS	NX25	18
Boot Frame		RB70	5	Oval Starting Collar		OX63	13	Stainless Pipe		NP01	18
Boot Rails		RB66	5	Oval Takeoff		OX60	13	Stainless Rain Cap	30SS	NX28	18
Boot,Perimeter	L580	RB43	5	Oval Vertical Angle		OX52	13	Stainless Reducer	431SS	NX41	18
Bridge-SPEAR		RX95	10	Oval Vertical Elbow		OX54	13	Stainless Tee	352SS	NX70	18
CA Rtn-Air Box		CA60	4	Oval-Oval, Rev. Boot	78	OB78	13	Stainless Trim Collar		NX10	18
CA Rtn-Air Frame		CA62	4	Oval-Rd, Elbow Boot	75	OB75	13	Standing 'S' Cleat		DX13	10
C-Air Frame		CA16	4	Oval-Rd, End Boot	71	OB71	13	Starter Base		CA42	4
C-Air Ground		CA19	4	Oval-Rd, Str. Boot	72	OB72	13	Starting Collar DB	520DB	DX35	9
C-Air Ret.KIT		CA10	4	Panning		PS40	10	Stckhd, Long wo Ears	309	SX72	15
C-Air Rt. Bt.		CA12	4	Plenum (Custom)		PL10	10	Strapping		DX16	10
Cap, Crimped	422	RX22	8	Plenum Corners		PX20	10	Support Box		CA40	4
Cap, Inceaser WC	452	RX25	15	Plenum Door		PX12	10	Support Bracket		DX17	10
Cap, No Crimp	421	RX21	8	Plenum Rail		PX16	10	Takeoff, Elbow	SM92	TO93	6
Cap, Reducer NC	451	RX24	15	Plenum Side		PX14	10	Takeoff, Elbow, DB	DB92	TO94	9
Cap, Reducer WC	450	RX23	15	Plenum Top		PX18	10	Takeoff, Lever Lock		TO92	6
Ceil. Box Angle		RB65	8	PVC Angle		VX50	17	Takeoff, Rd. Adj.	325	TO30	6
Ceil. Box Side		RB61	8	PVC Boot,Elb	PL575	VB30	17	Takeoff, Rd. Adj,Half Tab	325H	TO33	6
Ceil. Box Top		RB62	8	PVC Boot,End	PL571	VB10	17	Takeoff, Rd. Side	326	TO36	6
Ceiling Boot, Side		RB41	8	PVC Boot,Prmtr		VB70	17	Takeoff, Snap Lock		TO91	6
Chimney Thimble	415	RX05	19	PVC Boot,Str	PL572	VB20	17	Takeoff, Sq. Adj.	303	TO10	6
Collar, Clinch w/tabs	417	RX14	8	PVC Collar	416P	VX11	17	Takeoff, Sq. Adj. DB	303DB	TO14	9
Collar, Crimped	413	RX11	8	PVC Connector		VX58	17	Takeoff, Sq. Non-Adj.	308	TO20	6
Collar, Long Ext.	416	RX12	8	PVC Elbow		VX53	17	Takeoff, Sq. Non-Adj,DB	308DB	TO18	9
Collar, Long Ext. WD	416D	RX13	8	PVC End Cap	422P	VX20	17	Takeoff, Sq. Side	328	TO38	6
Collar, No Crimp	412	RX10	8	PVC Reducer	433P	VX44	17	Takeoff, Sq. Side	328DB	TO39	9
Collar, Roth	413R	RX16	8	PVC Saddle		VX61	17	Takeoff, Sq,NA,0R,DBl	462	TO40	6
Connector		RX58	16	PVC Saddle W/45	231P	VX62	17	Takeoff, Sq,NA,0R,Top	563	TO50	6
D.Hanger Str.		DX15	10	PVC Saddle W/90	230P	VX63	17	Takeoff, Sq,NA,1R,DBl	463	TO41	6
D.Hanger' L'		DX19	10	PVC Spiro Pipe		VP01	17	Takeoff, Sq,NA,1R,Top	564	TO51	6
Damper W/1 Hardware	10	RX31	19	PVC Tee	352P	VX70	17	Takeoff, Sq,NA,1R,Top	564DB	TO54	9
Damper W/2 Hardware	10	RX32	19	PVC Wye	229P	VX80	17	Takeoff, Sq,NA,2R,DBl	464	TO42	6
DB Collar, ND	52	DX76	9	R.Boot,Ang	L577	RB40	5	Takeoff, Sq,NA,2R,Top	565	TO52	6
DB Collar, WD	53	DX38	9	R.Boot,Elb	L575	RB30	5	Tee (Flared & Straight)	352	RX70	12
DB Collar,ND Tabloc	52T	DX77	9	R.Boot,End	L571	RB10	5	TO, Adh, Conical	1330	TA60	7
Drain Pans		CA30	4	R.Boot,Str	L572	RB20	5	TO, Adh, Offset	1573	TA57	7
Drawband	410	RX01	19	Rain Cap	30	RX28	19	TO, Adh, Rd.Collar	1329R	TA40	7
Drive Cleats		DX10	10	Reducer GS	430GS	RX44	16	TO, Adh, Sq,Adj.	1303	TA10	7
Dryer Box Wall Frame		EX30	19	Reducer NC	431	RX41	15	TO, Adh, Sq,Adj. D	1303D	TA11	7
Duct Adapter	534	DX80	11	Reducer WC	430	RX40	15	TO, Adh, Sq.Collar	1329	TA39	7
Duct Damper		DX50	11	Register Box 11" H	517	RB51	15	TO, Adh, Sq.N.Adj	1308	TA20	7
Duct End Cap	512	DX44	11	Register Box 5" H	516	RB50	15	TO, Adh, Sq,NA,Top	1564	TA51	7
Duct Hanger 'Z'		DX14	10	Register Pan	573	RB55	15	TO, Adh, Sq.Side	1328	TA38	7
Duct Horiz.Angle	532	DX27	11	Register Saddle		RX65	16	Toe Kick Boot		RB95	15
Duct Horiz.Elbow	525	DX25	11	Round Pipe		RP01	5	Toe Kick Box		RB94	15
Duct Reducer	533	DX41	11	Round Pipe Unboxed		RP05	5	Transformer	472	TO80	6
Duct Reducerette		DX79	11	S' Cleats		DX12	10	Trim Collar		RX09	19
Duct Starting Collar	520	DX33	11	Saddle, Flue W45	230	RX60	16	Twist-In, ND	40	DX60	9
Duct Transition	518	DX82	11	Saddle, Flue W90	231	RX61	16	Twist-In, W/45 Scp	42	DX62	9
Duct Vert. Angle	314	DX23	11	Saddle, Rd/Rd	1231	TA09	7	Twist-In, W/90 Scp	43	DX63	9
Duct Vert.Elbow	307	DX21	11	Spin-In, ND	46	DX70	6	Twist-In, WD	41	DX61	9
Duct, Rectangular 24GA		DT03	11	Spin-In, w/45 scoop	48	DX72	6	Twist-In, WD-45 scp	44	DX64	9
Duct, Rectangular 26GA		DT01	11	Spin-In, w/90 scoop	49	DX73	6	Twist-In, WD-90 scp	45	DX65	9
Duct, Rectangular 28GA		DT02	11	Spin-In, WD	47	DX71	6	Wall Stack		SK01	14
ECONO Dmpr. W/1Hrdwr	11	RX35	19	Spin-In, WD-45scp	50	DX74	6	Wall Stackhead		SX76	15
ECONO Dmpr. W/1Hrdwr	11	RX36	19	Spin-In, WD-90scp	51	DX75	6	Wye, Adj.	336	RX83	12
ECONO Dmpr. W/2 Hrdwr	11	RX37	19	Sq - Rd Transition	573	RB55	4	Wye, Adj. Perimeter	332	RX82	12
ECONO Dmpr. W/2 Hrdwr	11	RX38	19	Stack Adapter	601	SX80	14	Wye, Branch	330	RX81	12
Elbow		RX53	5	Stack Adapter, Elb.	602	SX81	14	Wye, Flue	229	RX80	12
Elbow Long Rad.		RX54	5	Stack Boot,Ang	577	SB40	14	Wye, Reducing	228	RX79	12

4	COLD AIR RETURN BOOTS
4	FURNACE BOXES
4	FILTER FRAMES/BOXES
5	ELBOWS, ANGLES
5	ROUND PIPE
5	REGISTER BOOTS, CRD'S
6	SHEET METAL TAKEOFFS
6	SPIN-INS
7	ADHESIVE TAKEOFFS
8	ROUND COLLARS
8	CEILING BOXES, INSULATED
9	DUCTBOARD FITTINGS
9	TWIST-INS
10	PLENUMS, JOIST PANNING
10	HANGERS & SUPPORTS
11	RECT. DUCT & FITTINGS
12	TEES & WYES
13	OVAL PIPE AND FITTINGS
14	WALL STACK & FITTINGS
15	STACKHEAD FITTINGS
15	TOE-KICK BOOTS
15	REDUCERS & INCREASES
16	SPIRAL PIPE & FITTINGS
17	PVC COATED SPIRAL PIPE
18	STAINLESS STEEL PIPE
18	BLACK PIPE & FITTINGS
19	ROOF, RAIN CAPS, VENTING
19	DAMPERS & ACCESSORIES
19	STEEL SHEETS

COLD AIR RETURN BOOTS, FURNACE BOXES & FILTER FRAMES

ALL COLD AIR RETURN BOOTS AND KITS CAN BE OPTIONED AS FOLLOWS:

- ROUND BACK OR STRAIGHT BACK
- TOP LOAD OR SIDE LOAD FILTER OPENING
- BOOT ONLY OR AS A COMPLETE KIT
- WITH SNAP-ON FILTER DOOR



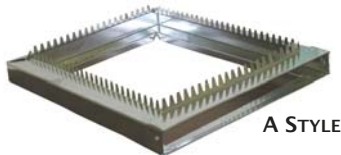
ROUND BACK STRAIGHT BACK
SIDE LOAD TOP LOAD

COLD AIR RETURN BOOTS CA12AABBXXYY



FURNACE SUPPORT BOXES (24GA)

SOLID CA40XXYY 12"H
CUTOUT CA40XXYYAABB 10"H
XX=BOX LENGTH, YY= BOX WIDTH
AA= CUTOUT L, BB=CUTOUT W
XX=OVERALL BOX LENGTH
YY= OVERALL BOX WIDTH



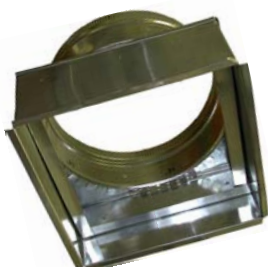
A STYLE

FILTER FRAME (1")

CA20XXYYZ
XX=FILTER WIDTH
YY=FILTER LENGTH
Z= STYLE TYPE
OPTIONS: CLIP-ON DOOR

STYLE TYPES:
A = FLANGE BOTH SIDES; TEETH ONE SIDE, PLAIN FLANGE OTHER
B = FLANGE ONE SIDE W/TEETH ONE SIDE AND FLAT ON OTHER SIDE
C = SAME AS B BUT WO TEETH
D = SAME AS A BUT WO TEETH
WISE STYLE= PLAIN FLANGE BOTH SIDES CA72XXYYZ

1" FILTER FRAME BOX
W/SLIDING COVER (BELOW)



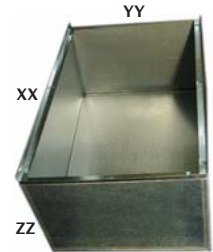
MOBILE HOME BOX
RB55XXYYZM
SAME AS 573 SQ RD
BUT WITH INSIDE FILTER LEDGE

COLD AIR RETURN BOOT KIT CA10XXYYAABB

KIT INCLUDES: (1) 520 STARTING COLLAR, (2) JTS 32" DUCT, (1) CA RETURN BOOT, (2) S CLEATS, (6) DRIVE CLEATS

NOTE:
KITS LIST FURNACE FIRST, DROP SECOND
BOOTS LIST DROP FIRST, FURNACE SECOND

AA = CA DROP SLIP DIMENSION
BB = CA DROP DRIVE DIMENSION
XX = FURNACE CUTOUT (LARGER)
YY = FURNACE CUTOUT (SMALLER)



COLD AIR RETURN FRAME CA16XXYYZZ

XX=REG LENGTH, YY= REG. WIDTH,
ZZ=STUD DISTANCE (16 OR 24)

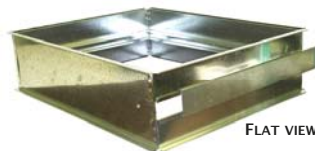


UPRIGHT VIEW



FILTER FRAME BOX W/SLIDE-ON DOOR CA74XXYYZ

XX=HEIGHT, YY= LENGTH, Z= WIDTH
CAN BE MADE TO FIT FILTERS > 1"
OPTIONAL DOORS: CLIP-ON DOOR (C), HINGED DOOR (H) OR SLIDE-ON DOOR (S)



FLAT VIEW

FURNACE BOXES (OPEN TOP, 24GA)

CA50XXYYZZ

XX=LENGTH, YY=WIDTH, ZZ=HEIGHT
OPTIONS: FT= 1" FILTER TRAY,
D= SNAP-ON FILTER DOOR
SFT=SLIDING FILTER TRAY



SLIDING FILTER TRAY MODEL

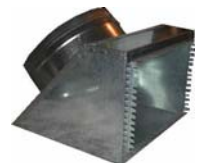
ASK ABOUT OUR NEW INSULATED FURNACE BOXES!

FRESH AIR INTAKE

CA64XX
W/DAMPER
CA64DXX
XX=04-12



MOBILE BOOT
CA18XXYY



573 SQUARE TO ROUND

RB55XXYYZZ
SPECIFY W/ OR WO FLANGE



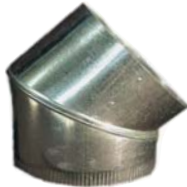
DRAIN PANS CA30XXYYZZ

PLUG ON LONG SIDE STANDARD
XX= WIDTH, YY=LENGTH,
ZZ=26 OR 24 GAUGE



**4-PIECE ADJ 90°
ELBOW
RX53_{XXZZ}**

**3-PIECE ADJ.
45° ANGLE
RX50_{XXZZ}**



**2-PIECE ADJ.
45° ANGLE
USE RX50**

**XX=03-36 DIAMETER
ZZ=30, 28, 26, 24, 22 GAUGE
EXAMPLE: RX530630 6" 30 GA ELBOW**

**STANDARD PACKAGING:
3"-6" ELBOWS BOXED
7"-14" BANDED, >16" LOOSE**

**STRAIGHT ELBOWS AVAILABLE IN
4", 5", 6", 7", & 8" PROVIDING-
GREATER PACKAGING DENSITY.**



**LONG RADIUS ELBOWS
RX54_{XXZZ}
PROVIDES IMPROVED AIRFLOW
AVAILABLE IN 3-12"
GALVANIZED OR ALUMINUM**

ROUND PIPE



**BUTTON LOCK , SNAP LOCK OR
HAMMER LOCK**

**RP01_{XXYYZZ} (BOXED)
RP05_{XXYYZZ} (UNBOXED)
XX=03-36 PIPE DIAMETER
YYY=24,48,60,120 LENGTH
ZZ=WA,30,28,26,24,22 GAUGE**

**Ex: RP050630060 6" 30GA 60"
UNBOXED ROUND PIPE**

**ALL SIZES 10/BUNDLE EXCEPT 3"
@ 5/BNDL**

**3-9" SIZES BOXED OR UNBOXED
ADD'L CHARGE FOR BOXED**

10" & ABOVE BUNDLED ONLY

BEADED PIPE AVAILABLE

**3" & 4" AVAILABLE ASSEMBLED
FOR EXTRA CHARGE**

Rack Qtys.

Size	BOXED	UNBOXED
3"		550
4"	480	630
5"	350	480
6"	300	350
7"	200	240
8"	160	200
9"		160
10"		150
12"		90
14"		80

REGISTER, PERIMETER, BASEMENT & CRD BOOTS



**L-571 END BOOT
SPECIFY CENTER (C),
LEFT (L) AND RIGHT (R)
RB10_{XYZ}**



**L-572
STRAIGHT BOOT
RB20_{XYZ}**



**L-575
90° ELBOW BOOT
RB30_{XYZ}**



**L-577
45° ANGLE BOOT
RB40_{XYZ}**



**PH-1
BASEMENT BOOT
RB45_{XYZ}**



**ALL BOOTS CAN BE
MANUFACTURED WITH
1" FLANGE**

**X= REGISTER HEIGHT, YY= REGISTER WIDTH
Z= ROUND DIAMETER, F= FLANGE
EXAMPLE: RB304106F
4x10x6 ELBOW REGISTER BOOT W/FLANGE**



**L580 PERIMETER
BOOT
RB43_{XXYYZZ}**

**ALL BOOTS CAN BE MANUFACTURED TO INCLUDE
LONGER REGISTER THROATS (3"-6" TYPICAL)**



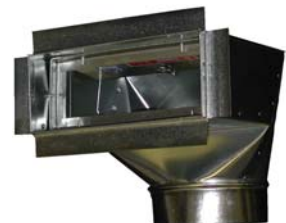
**BOOT FRAME
RB70_{XYZ}**

**FITS BOTH 16" & 24" STUDS
NEW STAMPED DESIGN W/ROUNDED EDGES
4x10, 4x12, 4x14, 6x10, 6x12, 6x14**



**BOOT RAILS RB66_{XX}
XX=16, 20, 24, 26**

**REGISTER BOOT WITH INTEGRATED UL APPROVED
3 HR RATED CEILING RADIATION DAMPER (CRD).
AVAILABLE IN ELBOW AND STRAIGHT BOOTS, 4x8
TO 6x14 WITH 1/2" SHEETROCK FLANGE AND LIP
RB30_{XXYYZFSE} (ELBOW)
RB20_{XXYYZFSE} (STRAIGHT)
E = 4 OR 6 THROAT EXTENSION
EXAMPLE: RB306127FS6 = 6x12x7 ELBOW REG BOOT W/
CEILING RADIATION DAMPER, 6" THROAT EXTENSION**



**ELBOW BOOT WITH
INTEGRATED CRD**

SHEET METAL TAKEOFFS, SPIN-INS



**303 SQUARE
ADJ. TAKEOFF
TO10xx (04-18")
TO16xx (w/DAMPER)**



**308 RECTANGULAR
NON-ADJ. TAKEOFF
TO20xx (04-18")
TO20Dxx (w/DAMPER)**



**325 ROUND
ADJ. TAKEOFF
TO30xx (04-14")**



**325H HALF-TAB
RND ADJ. TAKEOFF
TO33xx
(6" & 7" ONLY)**



**SM92 TAKEOFF
ELBOW
TO93xx**



**NON-ADJ. SQUARE
TOP TAKEOFF
TO50xx (563, 0" RISE)
TO51xx (564, 1" RISE)
TO52xx (565, 2" RISE)**



**326 ROUND
SIDE TAKEOFF
TO36xx**



**328 SQUARE
SIDE TAKEOFF
TO38xx**



**LOCKING ADJ. TAKE-OFF
TO91xx SNAP LOCK
TO92xx LEVER LOCK**



**472 TRANSFORMER
TO80xx**



**SPIN-IN
46 DX70xx
47 DX71xx
(w/DAMPER)**



**SPIN-IN WITH
45° SCOOP
48 DX72xx
50 DX74xx
(w/DAMPER)**



**SPIN-IN WITH
90° SCOOP
49 DX73xx
51 DX75xx
(w/DAMPER)**



**NON-ADJUSTABLE
DOUBLE TAKEOFF
TO40xx (462, 0" RISE)
TO41xx (463, 1" RISE)
TO42xx (464, 2" RISE)**



**ROUND ADH. TAKEOFF
w/DAMPER EXTENSION KIT**

ADD "E" TO ANY TAKEOFF FOR
EXTENSION KIT INSTALLATION
EX: TA40DE06

RECTANGULAR & SQUARE FITTING OPENING DIMENSIONS

	Sheet Metal					Adhesive				
	TO10 303	TO20 308	TO38 328	TO40 462	TO51 564	TA10 1303	TA20 1308	TA38 1328	TA51 1564	TA57 1573
4"	4x6	4x6	5x5	5x7	4x5	4x6	4x6	4x4	4x4	6x10
5"	5x7	5x7	5x5	6x8	5x6	5x7	5x7	5x5	5x5	8x12
6"	6x8	6x8	6x6	7x9	6x7	6x7	6x8	6x6	6x6	7x14
7"	6.5x10	7x9	7x7	7x10	7x8	6.5x10	7x9	7x7	7x7	7x17
8"	6.5x12	7x11.5	7x9	7x12	8x8	6.5x12	8x11.5	7x9	8x8	7x20
9"	7x13	9x9	9x9			7x13	9x9	9x9	9x9	
10"	7x14	7x14	10x10			7x14	7x14	10x10	7x14	
12"	7x16		12x12			7x16	7x16	12x12	7x16	
14"	7x18		14x14							
16"	7x20		16x16							
18"	7x22		18x18							



**DAMPER
EXTENSION KITS**
USED TO EXTEND DAMPER HANDLE
WHEN WRAPPING PIPE/DUCT

**SPECIFY 2.5" OR 1.0"
WIDE STANDOFF**

1.5" HIGH STANDARD
1/4" OR 5/16" SHAFT ADAPTER

OFFER YOUR CUSTOMERS A WAY TO SAVE VALUABLE
INSTALLATION TIME. INQUIRE ABOUT LUKJAN PRE-
INSTALLING THESE DAMPER EXTENSION KITS ON
ANY TYPE TAKEOFF (SHEET METAL OR ADHESIVE)
FOR JOBS REQUIRING WRAPPED INSULATION.



**ROUND
SADDLE TAKEOFF**
1231 TA09_{XX}
1231D TA09D_{XX}
(W/DAMPER)
1231DS TA09DS_{XX}
(W DAMPER & SCOOP)



**ADJUSTABLE
ADHESIVE TAKEOFF**
1303 TA10_{XX}
1303D TA11_{XX}
(W/DAMPER)



SIDE TAKEOFF
1328 TA38_{XX}
1328D TA38D_{XX}
(W/DAMPER)



**HIGH EFFICIENCY
OFFSET TAKEOFF**
1573 TA57_{XX}
1573D TA57D_{XX}
(W/DAMPER)



**SQUARE BASE
TAKEOFF COLLAR**
1329 TA39_{XX}
1329D TA39D_{XX}
(W/DAMPER)



**NON-ADJUSTABLE TOP
ADHESIVE TAKEOFF
RECTANGULAR**
1308 TA20_{XX}
1308D TA20D_{XX}
(W/DAMPER)



**ROUND BASE
TAKEOFF COLLAR**
1329R TA40_{XX}
1329RD TA40D_{XX}
(W/DAMPER)



**NON-ADJUSTABLE TOP
ADHESIVE TAKEOFF-SQUARE**
1564 TA51_{XX}
1564D TA51D_{XX}
(W/DAMPER)



**ROUND BASE TAKE-OFF
WITH SCOOP & DAMPER**
1329RDS TA40DS_{XX}
1329RS TA40S_{XX}
(SCOOP ONLY)



**CONICAL ROUND
TAKEOFF**
1330 TA60_{XX}
1330D TA60D_{XX}
(W/DAMPER)



**ROUND BASE
TAKEOFF COLLAR
W/1" SLEEVE**
1329RF TA40F_{XX}
1329RDF TA40DF_{XX}
(W/DAMPER)
1" SLEEVE PROTECTS
INSULATED DUCTBOARD



**ROUND ADJUSTABLE
TAKE-OFF**
1325 TA30_{XX}
PROVIDES AN AIR-TIGHT SEAL WHILE
COMBINING A STANDARD
TAKEOFF & ELBOW WITH ONE FITTING

XX= DIAMETER

ROUND COLLARS



412 "B" COLLAR
NO CRIMP
RX10_{XX}
XX=03-24"



LONG EXT. COLLAR
416 RX12_{XX}
416RG RX12_{XX}RG
RG=SOLID RING
XX=03-36



416D COLLAR
LONG EXT. W/DAMPER
RX13_{XX}
416DS W/DAMPER & SCOOP
RX13S_{XX}
XX=04-24



416T TABLOC
LONG EXT. COLLAR
RX12T_{XX}

COMES NESTED. QUICK LOC TAB
WON'T RELEASE ONCE CLOSED.
SERRATED RING
PROVIDES FLAT, SECURE FIT.



413 "A" COLLAR
WITH CRIMP
RX11_{XX}
XX=03-24"



412 RING COLLAR
412RG RX10_{XX}RG
413RG RX11_{XX}RG
SOLID RING

END CAP
421 RX21_{XX} (NO CRIMP)
422 RX22_{XX} (CRIMP)
XX=03-24"



417 COLLAR
LONG EXT. W/TABS
RX14_{XX}
XX=04-28"
TABS KEEP FLEX FROM
SLIPPING OFF COLLAR



413R ROTH
COLLAR
RX16_{XX}
XX=03-24

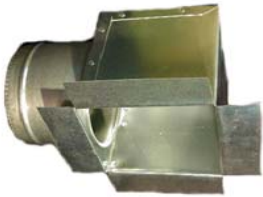


FLEX CONNECTOR
RX58_{XX}
USED TO JOIN SHORT
PIECES OF FLEX

COLLAR LENGTHS

"A" & "B" = 2 3/8"
ROTH = 4"
LONG EXT = 6"

CEILING BOXES; REGULAR AND INSULATED

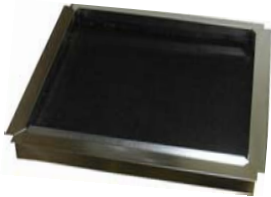


CEILING BOX
SIDE OUTLET
RB61_{XXYYZZ}
XX=06-22
YY=06-22
ZZ=04-20 DIAMETER
HEIGHT = 10, 12, 14
DEPENDING ON TAKEOFF



NEW DESIGN!
CEILING BOOT SIDE OUTLET
RB41_{XXYYZZ}
CALL FOR SIZES

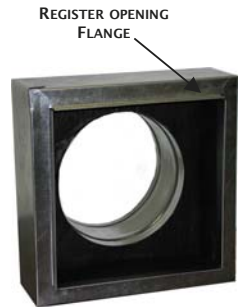
CEILING BOX
TOP OUTLET
RB62_{XXYYZZ}
XX=06-30
YY=06-24
ZZ=06-20 DIAMETER
STANDARD HEIGHT 6"



RETURN AIR INSULATED BOX
(DUCTBOARD INSULATION)
STANDARD HEIGHT 3"
WITH OR WITHOUT COLLAR

INSULATED CEILING BOXES
RB61_{XXYYZZRF} SIDE
RB62_{XXYYZZRF} TOP
RB65_{XXYYZZRF} ANGLED
XX, YY REGISTER OPENING
ZZ=TAKEOFF DIAMETER
R= R4 FOR 1", R6 FOR 1.5" INSULATION
SPECIFY "F" FOR EDGE FLANGE
ALL HAVE REGISTER FLANGE FOR CLEAN, EASY INSTALLATION.

EX: RB62061206R4F
6X12X6 TOP INSULATED CEILING BOX
W/1" INSULATION AND 1" EDGE FLANGE



TOP INSULATED WITH
REGISTER FLANGE ONLY



ANGLED INSULATED CEILING BOX
WITH 1" EDGE FLANGE



TOP INSULATED WITH
1" EDGE FLANGE



SIDE INSULATED WITH
EDGE & REGISTER FLANGE



EDGE AND REGISTER
FLANGE DETAILS



**303DB ADJ. SQUARE
DUCTBRD TAKEOFF-
TO14XXZ
TO14DXXZ
W/DAMPER**



**308DB NON-ADJ. RECT.
DUCTBRD TAKEOFF
TO18XXZ
TO18DXXZ
W/DAMPER**



**DUCTBOARD
ELBOW TAKEOFF
DB92 TO94XX
TO94DXX
W/DAMPER**



**325DB ADJUSTABLE
ROUND DUCTBOARD
TAKEOFF
TO30XXDB**



**413DB
DUCTBOARD
COLLAR
RX11XXDB**



**564DB NON-ADJ. SQUARE
TOP DUCTBRD TAKEOFF
TO54XXZ
TO54DXXZ
W/DAMPER**

563DB = 0" RISE TO53
564DB = 1" RISE TO54
565DB = 2" RISE TO55

SEE PAGE 6 FOR
OPENING DIMENSIONS



**328DB SQUARE SIDE
DUCTBRD TAKEOFF
TO39XXZ**



**520DB DUCTBOARD
STARTING COLLAR
DX35XXYYDB**



**413 ODB OVAL
DUCTBOARD COLLAR
OX63XX**



**DUCTBOARD
DOUBLETAKEOFF**

462DB = 0" RISE TO43
463DB = 1" RISE TO44
464DB = 2" RISE TO45



**564DB UNIVERSAL
DB TAKEOFF
TO54XXU**

SQUARE AND RECTANGULAR FITTINGS

XX= DIAMETER

Z= DUCTBOARD THICKNESS (BLANK = 1")

U : UNIVERSAL SUPPORTING BOTH 1" AND
1.5" FOR SQUARE AND RECT. FITTINGS ONLY

L : 1.5" DUCTBOARD

L2 : 2" DUCTBOARD

EX: TO5406U UNIVERSAL 6" ADJ SQ TAKEOFF FOR
1" AND 1.5" DUCTBOARD (UNIVERSAL)

LUKJAN MANUFACTURES A FULL
LINE OF 1", 1.5" AND 2"
DUCTBOARD FITTINGS.

WE ALSO MANUFACTURE SQUARE
AND RECTANGULAR **UNIVERSAL**
FITTINGS THAT SUPPORT BOTH 1"
AND 1.5" DB



**DUCTBRD COLLAR
52 W/O DAMPER
DX76XXZ
53 W/DAMPER
DX38XXZ**



**DUCTBRD TWIST-IN
WITH 90° SCOOP
43 W/O DAMPER
DX63XXZ
45 W/DAMPER
DX65XXZ**



**DUCTBRD TWIST-IN
40 W/O DAMPER
DX60XXZ
41 W/DAMPER
DX61XXZ**



**DUCTBRD TWIST-IN
WITH 45° SCOOP
42 W/O DAMPER
DX62XXZ
44 W/DAMPER
DX64XXZ**



**DUCTBOARD
COLLAR BOX**
USED TO PRODUCE DUCTBOARD COLD
AIR RETURN BOXES



**DUCTBOARD METAL
BOOT FLANGE**
USED TO PRODUCE DB
INSULATED CEILING BOXES

**52T TABLOC DUCTBOARD COLLAR
DX77XX**

BEADED AND WITH CRIMP. COMES NESTED.
QUICK LOC TAB WON'T
RELEASE ONCE CLOSED.

SUPPORTS BOTH 1" AND 1.5" DB



ROUND FITTINGS

ALL ROUND DUCTBOARD FITTINGS CAN BE MADE TO
SUPPORT 1", 1.5" OR 2" DUCTBOARD. SPECIFY L OR
L2 AS LISTED ABOVE.

PLENUMS, JOIST PANNING, HANGERS & SUPPORTS

CUSTOM PLENUMS

IN ADDITION TO UNIVERSAL FOUR SIDED PLENUMS, LUKJAN OFFERS CUSTOM PLENUMS IN ANY SIZE AND CONFIGURATION. CROSSBROKE WITH SNAP-LOCK SEAMS.

SOME SAMPLE OPTIONS INCLUDE:

- DOUBLE TOP
- TWO PIECE DESIGNS
- 1/2" FLANGE
- 1/2" HEM
- INSULATED

NOW YOU CAN EASILY STOCK PLENUMS TO FIT YOUR FURNACE LINE. CALL WITH YOUR REQUIREMENTS FOR QUOTE.

PL10XXYYZZ XX=WIDTH, YY=DEPTH, ZZ=HEIGHT



"S" CLEAT DX12ZZ



STANDING "S" CLEAT DX13YZZ



DRIVE CLEAT DX10ZZ

Size	S Cleat	Drive
8"	100 or 500/box	
60"	50/box	100/box
96"	25/bundle	25/bundle
120"	25/bundle	25/bundle

DUCT HANGERS DX19



DUCT HANGER
8 & 9" L, 1" W



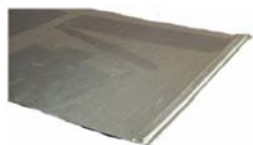
Z-HANGER
8" & 9" LENGTH



ECONO DUCT HANGER
2-1/2" L x 1/2" W
18GA.



STRAIGHT END
PIPE HANGER



JOIST PANNING
PS40XXYYY
XX = WIDTH
YYY = LENGTH



JOIST HEADER PLATE
PX05XXYYZZ
XX = WIDTH
YY = LENGTH
ZZ = GAUGE



JOIST BLOCKOFF
PX06XXYYZZ
XX = WIDTH
YY = LENGTH
ZZ = GAUGE



JOIST HEAD
PX07XXYYZZ
XX = WIDTH
YY = LENGTH
ZZ = GAUGE



UNIVERSAL PLENUM

CROSSBROKE WITH SNAP-LOCK SEAMS

PX14XXZZZ PLENUM SIDES
PX16XXZZZ PLENUM RAILS
PX18XXYY PLENUM TOPS

XX= WIDTH, YY= DEPTH,
ZZ=LENGTH

ASK ABOUT OUR NEW
INSULATED PLENUMS!



ANGLES
DX18
VARIOUS SIZES &
GA. AVAIL



U-CHANNEL



STRAPPING
FOR PIPE OR DUCT
HANGING
DX16S1 100' 1"
DX16S2 100' 2"



BRIDGES RX95

UNIVERSAL

SPEAR

JAVELIN



SUPPORT BRACKETS/NAIL PLATES
USED TO RE-INFORCE JOIST CUTOUTS
(BOCA PLATE)

DX17XXYYHHZZ

XX=WIDTH, YY=LENGTH, HH= # HOLES, ZZ= 18 OR 16
Ex: DX1703181916 = 3"x18" 19 HOLE 16 GA



ADJUSTABLE DUCT
HANGERS
SPEAR TIP AND SCREW TIP



FLEXIBLE DUCT CONNECTOR
DX36AABB
AA=DRIVE, BB=SLIP
EFFECTIVE IN REDUCING VIBRATION AND NOISE
BETWEEN PLENUM AND DUCT LINE



SLIDE LOCK DUCT

ALL RECTANGULAR DUCT IS CROSS-BROKE. BEADED AVAILABLE.
STANDARD 48", 60" AND 96" LENGTHS.
INQUIRE REGARDING OTHER LENGTHS.
X8 DRIVE STANDARD WITH X10 THRU X20 DRIVES AVAILABLE



BUTTON LOCK STANDARD
E-LOCK AVAILABLE
(E-LOCK HAS NO EXPOSED SHARP EDGES)

STANDARD UNBOXED
DUCT RACK QUANTITIES

S	D	4'	5'	8'
8	8	150	150	180
10	8	150	150	120
10	10	90	90	90
12	8	150	150	150
12	10	100	100	100
14	8	160	160	160
14	10	120	120	120
16	8	120	120	120
16	10	90	90	90
18	8	100	100	100
18	10	80	80	80
20	8	100	100	100
20	10	80	80	80
22	8	100	100	100
22	10	80	80	80
24	8	100	100	100
24	10	80	80	80

SLIP & DRIVE DUCT
DT01XXYYZZ 26GA
DT02XXYYZZ 28GA
DT03XXYYZZ 24GA
XX=SLIP, YY= DRIVE
ZZ=LENGTH INCHES

NOTE:

RECTANGULAR DUCT LISTS THE SLIP DIMENSION FIRST FOLLOWED BY DRIVE XXYY
DUCT FITTINGS LIST THE DRIVE FIRST FOLLOWED BY SLIP DIMENSION YYXX



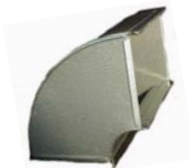
512 END CAP
DX44YYXX



512 END CAP WITH 2" EXT.
DX45YYXX



520 DUCT STARTING COLLAR
DX33YYXX



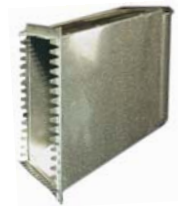
307 VERTICAL 90° ELBOW
DX21YYXX
ROUND OR SQUARE INSIDE NECK



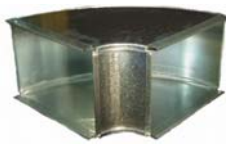
533 FULL DUCT REDUCER
DX41YYXX
LARGEST OPENING
SPECIFY REDUCTION



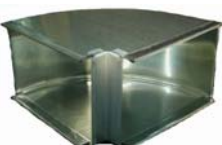
534 DUCT ADAPTER
DX80YYXX
XX=DUCT REDUCTION
YY=DUCT DRIVE DIMENSION
EX: DX800408 4x8 DUCT ADAPTER



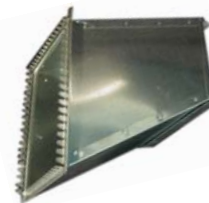
519 OFFSET STARTING COLLAR
DX31YYXX
STANDARD OFFSET =3"



525 HORIZONTAL 90° ELBOW
DX25YYXX
ROUND OR SQUARE INSIDE NECK



DUCT REDUCERETTE
DX79XXYY
XX=DUCT REDUCTION
YY=DUCT DRIVE DIMENSION



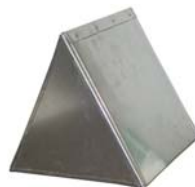
518 TRANSITION TAKEOFF
DX82YYXXZ
XX=DUCT SLIP
YY=DUCT DRIVE
Z=D W/DAMPER
SPECIFY PLENUM OPENING



314 VERTICAL 45° ANGLE
DX23YYXX



532R HORIZONTAL 45° ANGLE
DX27YYXX



TRIANGLE BOXES
DX47XX
USED IN FLEXDUCT
DISTRIBUTION SYSTEMS



DUCT DAMPER
DX50YYXX



DUCT DAMPER HARDWARE
18 GA. ZINC PLATED
CENTER HOLE AVAILABLE:
1/4" SQUARE
3/8" SQUARE
5/16" OVAL

TEES & WYES



YY
↑
FLOW
XX



229 FLUE WYE RX80_{XXYYZZ}

XX=03-24" FURNACE SIDE
YY=04-24" FLUE SIDE (CRIMPED)
ZZ=03-24" BRANCH SIDE
DEFAULT GAUGE =26GA
ADD 24 OR 22 FOR OTHER GA

FOR EQUAL OPENINGS, SPECIFY SINGLE DIA.
EX: RX8004 = 4x4x4

229 SHORT FLUE WYE RX80_{XXYYZZ}

XX=03-24" FURNACE SIDE
YY=04-24" FLUE SIDE (CRIMPED)
ZZ=03-24" BRANCH SIDE

228 REDUCING WYE RX79_{XXYYZZ}

USED IN ROUND DUCT SYSTEMS
XX=03-24" AIR EXIT SIDE (CRIMPED)
YY=04-24" AIR INPUT SIDE (UNCRIMPED)
ZZ=03-24" BRANCH EXIT SIDE (CRIMPED)
DEFAULT GAUGE =26GA
ADD 24 OR 22 FOR OTHER GA



332 ADJUSTABLE PERIMETER WYE RX82_{XXYYZZ}

XX=04-10" FEED DIAMETER
YY=03-08" STR. BRANCH
ZZ=03-08" ADJ. BRANCH
YY = ZZ (TYPICAL)

SWIVEL TEE
(CALL FOR PRICE AND SIZES)



336 ADJUSTABLE WYE RX83_{XXYYZZ}

XX=04-14" FEED DIAMETER
YY=03-12" BRANCH 1 DIA.
ZZ=03-12" BRANCH 2 DIA.
YY = ZZ (TYPICAL)



352 SQUARE OR FLARED TEE RX70_{XXYYZZ}

XX=03-16" AIR ENTRY SIDE
YY=03-16" AIR EXIT (CRIMPED)
ZZ=03-16" AIR EXIT



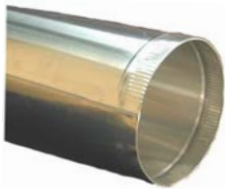
330 WYE BRANCH RX81_{XXYYZZ}

XX=03-14" FEED DIA.
YY=03-10" BRANCH 1
ZZ=03-10" BRANCH 2
YY=ZZ (TYPICAL)



RX70_{XX} EQUAL SIZED OPENINGS

ALUMINUM PIPE, ELBOWS & FITTINGS



ALUMINUM PIPE AP01_{XXYY}

XX=03-14 DIAMETER
YY=24, 48 LENGTH



4-PIECE ADJUSTABLE ALUMINUM 90° ELBOW AX53_{XX}

XX=03-16

5-PIECE LONG RADIUS ADJUSTABLE ALUMINUM 90° ELBOW AX54_{XX}

XX=03 & 04"



PERFECT FOR USE WITH THE DRYER BOX WALL FRAME (SEE PAGE 19)



ALUMINUM STARTING COLLARS

412 AX10_{XX} (UNCRIMPED)
413 AX11_{XX} (CRIMPED)
416 AX12_{XX} (LONG)



OVAL PIPE (BUTTON LOCK)
OP01_{XXYY}
XX=05-08
YYY=060-115
 CENTER OR SIDE SEAM

WE OFFER THE COMPLETE LINE OF OVAL PIPE AND FITTINGS FROM 5" THRU 8".

PIPE LENGTHS STANDARD AT 60" AND 100". OTHER LENGTHS AVAILABLE.
 30GA STANDARD, 26GA AVAILABLE.



OVAL HORIZONTAL 45° ANGLE
OX51_{XX}



OVAL VERTICAL ONE-PIECE 45° ANGLE
OX52_{XX}



OVAL HORIZONTAL 90° ELBOW
OX53_{XX}



OVAL VERTICAL ONE-PIECE 90° ELBOW
OX54_{XX}



OVAL STARTING COLLAR
OX63_{XX}
 (SEE ALSO OVAL DUCTBOARD STARTING COLLAR)



71 RND-OVAL END BOOT
OB71_{XXYY}



72 RND-OVAL STRAIGHT BOOT
OB72_{XXYY}



75 RND-OVAL 90° ELBOW BOOT
OB75_{XXYY}

FOR RD-OVAL BOOTS:
XX=05,06,07,08 (OVAL)
YY= 06, 07 (ROUND)
 IF OVAL =RD, YY BLANK

SPECIFY: CR FOR CRIMP ROUND AND CO FOR CRIMP OVAL

Ex: OB750706CO
 7" OVAL TO 6" RD ELBOW CRIMP OVAL END



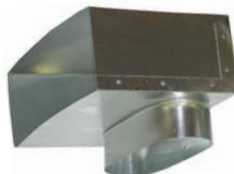
78 OVAL-OVAL REVERSE BOOT
OB78_{XX}



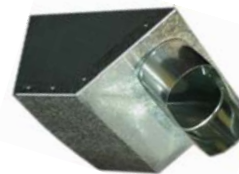
OVAL END BOOT
OL-571
OB10_{XXYYZ}



OVAL STRAIGHT BOOT
OL-572
OB20_{XXYYZ}



OVAL 90° ELBOW BOOT
OL-575
OB30_{XXYYZ}



OVAL 45° ANGLE BOOT
OL-577
OB40_{XXYYZ}

FOR OVAL BOOTS:
X=REGISTER HEIGHT
YY= REGISTER WIDTH
Z= OVAL DIAMETER
 Ex: OB204106
 OVAL STR BOOT 4x10x6



OVAL STACKHEAD W/ TAKEOFF
OX11_{XXYYZ}



OVAL STACKHEAD W/EARS
OX10_{XXYYZ}



OVAL DOUBLE STACKHEAD (OPEN BOTH SIDES) W/EARS
OX12_{XXYYZ}



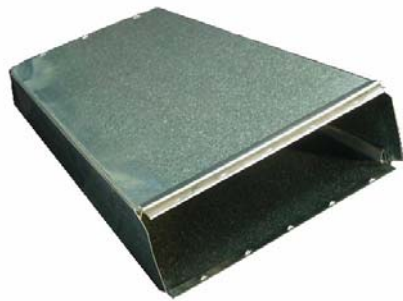
OVAL DOUBLE STACKHEAD W/ TAKEOFF (OPEN BOTH SIDES) W/EARS
OX13_{XXYYZ}



OVAL FIRESTOP
OX90_{XX} **XX=06-08**
 USED TO SEAL JOIST CUT-OUT WHEN RUNNING OVAL

STANDARD 9" THROAT

WALL STACK AND FITTINGS



**WALL STACK TWO PIECE
SNAP-LOCK**

SK01^{XYZZ}

**X=STACK DEPTH (2=2.25)
(3=3.25)**

YY=STACK WIDTH 10, 12, 14

ZZZ=ANY SIZE STACK LENGTH

(STANDARD 24, 48, 100)

CALL FOR OTHER SIZES



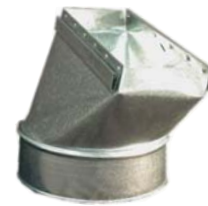
**571
STACK END BOOT
SB10^{XYZZ}**
*SPECIFY CENTER (C), LEFT (L)
AND RIGHT (R)*



**577
45° STACK
ANGLE BOOT
SB40^{XYZZ}**



**575
90° STACK
ELBOW BOOT
SB30^{XYZZ}**



**572
STACK STRAIGHT
BOOT
SB20^{XYZZ}**

**ALL STACK BOOTS
COME WITH BOOT
CLIPS ATTACHED**



**307
VERTICAL STACK
90° ELBOW
SX21^{XY}**



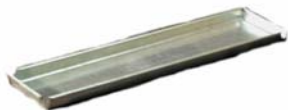
**314
VERTICAL STACK
45° ANGLE
SX23^{XY}**



**362
TOP STACK TAKEOFF
SX41^{XY}**



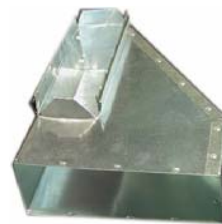
**364
SIDE STACK TAKEOFF
SX42^{XY}**



**512
STACK END CAP
SX44^{XY}**



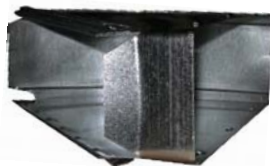
**520
STACK STARTING
COLLAR
SX33^{XY}**



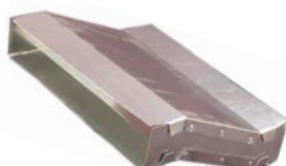
**524 STACK ELBOW
SX24^{XYZZ}**
Z=C (CENTER), L (LEFT), R (RIGHT)
LEFT SHOWN



**525 HORIZONTAL
STACK 90° ELBOW
SX25^{XY}**



**532
HORIZONTAL STACK
45° ANGLE
SX27^{XY}**



**OFFSET STACK
SX94ABB^{XY}**
*SAME DIMENSION,
3" STANDARD OFFSET, 9" LONG*



**601 STACK
ADAPTER
SX80ABB^{XY}**



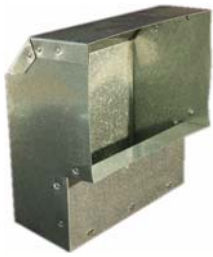
**602 STACK
ADAPTER
SX81ABB^{XY}**



**604 STACK
CONNECTOR
SX35^{XY}**

STACKHEAD FITTINGS & TOE KICK BOOTS

SERVICE ♦ QUALITY ♦ TRUST



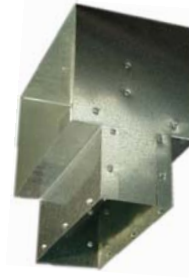
**302 SHORT THROAT
STACKHEAD
SX70_{ABBXXY}**



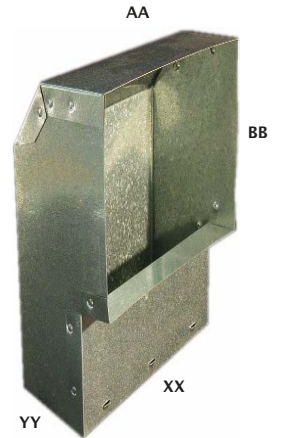
**309 LONG THROAT
STACKHEAD
WITH EARS
SX71_{ABBXXY}**



**310 LONG THROAT
STACKHEAD
WITHOUT EARS
SX72_{ABBXXY}**



**311 DOUBLE
STACKHEAD
SX73_{ABBXXY}**



WALL STACKHEAD
USED AS THRU-THE-WALL
RETURN GRILL

SX76_{ABBXXY}
AA= WIDTH REG GRILL
BB= LENGTH REG GRILL
XX= FLOOR WIDTH OPENING
YY= FLOOR DEPTH OPENING

AA = XX TYPICAL

SPECIFY W OR W/O
1" FLANGE ON
FLOOR OPENING



**313 OUT OF WALL
STACKHEAD
SX74_{ABBXXY}**



**315 STACKHEAD
SX75_{ABBXXY}**



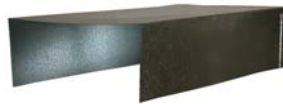
REGISTER BOX
516 = 5" HIGH
RB50_{XXYY}
517 = 11" HIGH
RB51_{XXYY}



**573
REGISTER PAN**
RB55_{XXYYZZ}
XX=06-14
YY=06-16
ZZ=05-14 (DIAM.)



TOE-KICK BOX
RB94_{XXYY}
(OPEN REG. SIDE ONLY)



TOE-KICK BOX
RB94_{XXYY}S
(OPEN BOTTOM AND SIDE)



**TOE-KICK BOOT
W/ ROUND COLLAR**
RB95_{XXYYZ}



**TOE-KICK BOOT
W/OVAL COLLAR**
RB95_{XXYYZO}

STANDARD LENGTH 12" FOR ALL TOE-KICK PRODUCTS

ROUND PIPE REDUCERS & INCREASERS



**430 TAPERED
REDUCER
W/CRIMP**
RX40_{XXYYZZ}



**431 TAPERED
REDUCER NO CRIMP**
RX41_{XXYYZZ}



**432 TAPERED
INCREASER
W/CRIMP**
RX43_{XXYYZZ}



**450 SHORT CAP
REDUCER
W/CRIMP**
RX23_{XXYYZZ}



**451 SHORT CAP
REDUCER
NO CRIMP**
RX24_{XXYYZZ}



**452 SHORT CAP
INCREASER
W/CRIMP**
RX25_{XXYYZZ}

XX=04-24", YY=03-22"
ZZ= BLANK FOR 26GA
SPECIFY 24 FOR 24GA, 22 FOR 22 GA

GALVANIZED SPIRAL PIPE AND FITTINGS



**ADJUSTABLE 4 PIECE
90° ELBOW,
BOTH ENDS CRIMPED
RX53_{XXZZ}GS**
XX=DIAMETER
ZZ=GAUGE 22, 24
DEFAULT=26GA



**ADJUSTABLE 2 PIECE
45° ANGLE,
BOTH ENDS CRIMPED**



**3-PIECE ADJ.
45° ANGLE
RX50_{XXZZ}GS**
BOTH ENDS CRIMPED



**CONNECTOR
BOTH ENDS CRIMPED
RX58_{XXZZ}GS**
XX=DIAMETER
ZZ=GAUGE



**GALVANIZED SPIRAL PIPE
GP01_{XXZZ}**
XX= DIAMETER 03-36
ZZ=GAUGE 22, 24, 26
SPECIFY **SMOOTH** OR
RAISED BEAD
STANDARD LENGTH IS 10' OR 20'
\$2/CUT CHARGE FOR ALL OTHER SIZES



**REGISTER SADDLE
RX65_{XXYYZZ}**
XX=REG HEIGHT 02-14
YY=REG WIDTH 06-32
ZZ=GAUGE 22, 24 BLANK= 26GA



REGISTER SADDLE
OPTIONS: W/1" FLANGE IN
(FI) OR 1" FLANGE OUT (FO)
5% ADDITIONAL



**NEW ADHESIVE
REGISTER SADDLE
RX64_{XXYYZZ}**
PROVIDES AN AIR-TIGHT FIT
AND SPEEDS INSTALLATION

**GSL-571 END BOOT
RB10_{XXYYZA}GS**
A= C (CENTER), L (LEFT),
R (RIGHT)
(ROUND END CRIMPED)
Ex: RB104106RGS
4x10x6 RIGHT END BOOT
FOR GAL SPIRAL



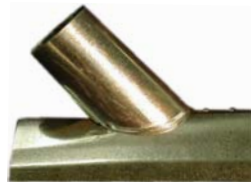
**GSL-572
STRAIGHT BOOT
RB20_{XXYYZ}GS**
(ROUND END CRIMPED)



**GSL-575
90° ELBOW BOOT
RB30_{XXYYZ}GS**
(ROUND END CRIMPED)



**231GS
90° FLUE SADDLE
RX61_{XXZZ}GS**



**230GS
45° FLUE SADDLE
RX60_{XXZZ}GS**

XX=OPENING
ZZ=GAUGE 22, 24, 26
BLANK = 26
SPECIFY FITTED PIPE DIAMETER



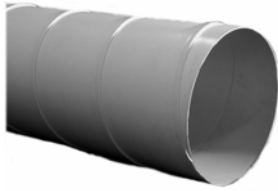
**422GS END CAP
CRIMPED
RX22_{XXZZ}GS**
XX= DIAMETER
ZZ=GAUGE 22, 24
BLANK = 26



**433GS TAPERED OR
ECCENTRIC REDUCER
CRIMPED BOTH ENDS
RX44_{XXYYZZ}GS**
XX=DIAMETER 1
YY= DIAMETER 2
ZZ= GAUGE 22, 24
BLANK=26

SPECIFY ECCENTRIC (FLAT ONE-SIDE)
ADDITIONAL 10%

ALL GALVANIZED SPIRAL PRODUCTS AVAILABLE IN 22 THRU 26 GAUGE
AND MANUFACTURED ACCORDING TO SMACNA STANDARDS.



PVC SPIRAL PIPE
VP01_{XX}
XX=03-36

SPECIFY *SMOOTH* OR *RAISED BEAD*
 STANDARD LENGTHS 10' AND 20'
 \$2/CUT CHARGE FOR OTHER SIZES



4-PIECE PVC
90° ELBOW
VX53_{XX}



3-PIECE PVC
45° ANGLE
VX50_{XX}



433P
PVC TAPERED AND ECCENTRIC
REDUCERS
CRIMPED BOTH ENDS
VX44_{XXYY}
 SPECIFY TAPERED OR
 ECCENTRIC (FLAT ONE SIDE)

1 MIL COATING INSIDE WITH 4 MIL
 COATING OUTSIDE STANDARD



422P
PVC END CAP
VX20_{XX}



416P
PVC STARTING COLLAR
VX11_{XX}



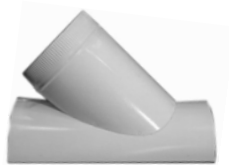
229 P
45° WYE
VX80_{XX}



352 P
90° TEE
VX70_{XX}



PVC CONNECTOR
VX58_{XX}



230 P
45° SADDLE
VX62_{XX}



231 P
90° SADDLE
VX63_{XX}



PVC REGISTER
SADDLE
VX61_{XYZ}



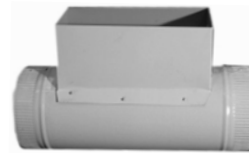
PL-571 PVC
END BOOT
VB10_{XYZ}



PL-572 PVC
STRAIGHT BOOT
VB20_{XYZ}



PL-575 PVC
90° ELBOW BOOT
VB30_{XYZ}



PVC PERIMETER
BOOT
VB70_{XYZ}

X = REG. HEIGHT
 YY = REG. WIDTH
 Z = ROUND DIAMETER

TOUCHUP PAINT 12.75OZ.
 ROLL PVC TAPE 2" X 100'
 CALL FOR LATEST PRICING & AVAILABILITY

STAINLESS STEEL PIPE & ACCESSORIES

STAINLESS STEEL SPECS:
304 ALLOY, 24GA STANDARD



STAINLESS STEEL PIPE
NP01_{XXYY}
XX= DIAMETER (03-26)
YY= LENGTH (12, 24, 36)
HAMMER LOCK



STAINLESS STEEL
4 PIECE ADJ. 90° ELBOW
NX53_{XX}
XX=03-24



STAINLESS STEEL
2 PIECE ADJ.
45° ANGLE
NX50_{XX}



352SS STAINLESS
STEEL 90° TEE
NX70_{XX}



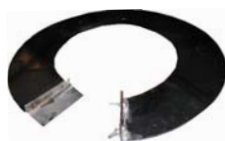
421SS STAINLESS
STEEL END CAP
NX21_{XX}



#30SS STAINLESS
STEEL RAIN CAP
NX28_{XX}
XX= 03-24



410SS STAINLESS
STEEL DRAWBAND
NX01_{XX}
XX=03-14



STAINLESS STEEL
TRIM COLLAR
NX10_{XX}
XX=04-14
(3 1/2" WIDE)



413SS STAINLESS
STEEL COLLAR
NX11_{XX}



431SS
STAINLESS STEEL
TAPERED REDUCER
NX41_{XXYY}



STAINLESS
STEEL
CONNECTOR
NX58_{XX}

BLACK PIPE & ACCESSORIES



BLACK ROUND PIPE
BP01_{XXYY}
XX=04-12, YY=12 & 24



BLACK 4-PIECE
ADJ. 90° ELBOW
BX53_{XX}



BLACK 2-PIECE
ADJ. 45° ANGLE
BX50_{XX}



410B BLACK
DRAWBAND
BX01_{XX}



352B BLACK TEE
BX70_{XX}



451B BLACK
SHORT CAP REDUCER
BX23_{XXYY}
NO CRIMP



450B BLACK
SHORT CAP REDUCER
BX24_{XXYY}
W/SMALL END CRIMPED



452B BLACK
SHORT CAP INCREASER
BX25_{XXYY}
LARGE END CRIMPED



421B/422B
BLACK END CAP
BX21_{XX} NO CRIMP
BX22_{XX} CRIMP



430B BLACK
TAPERED REDUCER
BX40_{XXYY}
W/SMALL END CRIMPED



431B BLACK
TAPERED REDUCER
BX41_{XXYY}
NO CRIMP



432B BLACK
TAPERED INCREASER
BX43_{XXYY}
W/LARGE END CRIMPED

BLACK TRIM COLLAR
BX10_{XX}



BLACK ADAPTER
BX60_{XX}



30 RAIN CAP
RX28_{XX}
XX=03-36"



415 CHIMNEY
THIMBLE
RX05_{XX}
XX= 03-12"

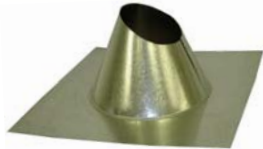


TRIM COLLAR
RX09_{XX}
XX=04-30"
(3 1/2" WIDE)

410 DRAWBAND
RX01_{XX}
XX=03-20"

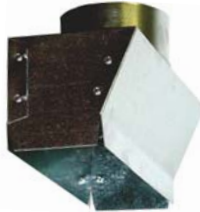


DRYER BOX WALL FRAME
EX30_{XXY}
XX=35 (3.5") OR 425 (4.25")
Y= U FOR UP, D FOR DOWN
(SEE PG 12 FOR LONG RADIUS
ALUMINUM ELBOWS)

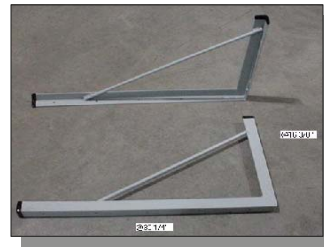


TALL CONE
ROOF FLASHING

ROOF
FLASHING



RANGE HOOD
SX86_{XXYYZZ}
XX, YY= HOOD OPEN-
ING



AC BRACKET
MOUNTS TO OUTDOOR WALL. PERMITS ABOVE-GROUND
INSTALLATION OF AC CONDENSING UNIT.

WELDED CONSTRUCTION
WITH CROSS-BRACKETS.
30x30
36x30
42x30
RATED 800LB.

DAMPERS & DAMPER ACCESSORIES



#10 STANDARD
SINGLE HARDWARE
RX31_{XX}
XX=4-14



#10 STANDARD
DOUBLE HARDWARE
RX32_{XX}
XX=4-36



#11 ECONO DAMPER
SINGLE HARDWARE
ASSEMBLED
RX35_{XX}
XX=4-12



#11 ECONO DAMPER
SINGLE HARDWARE
UNASSEMBLED
RX36_{XX}
XX=4-12



#11 ECONO DAMPER
DOUBLE HARDWARE
ASSEMBLED
RX37_{XX}
XX=4-18



#11 ECONO DAMPER
DOUBLE HARDWARE
UNASSEMBLED
RX38_{XX}
XX=4-14

#10 STANDARD HAVE
SPRING LOADED DAMPER CLIPS

DAMPER TUBE
RX39_{XX}



REGULATOR &
DAMPER QUAD

DAMPER
EXTENSION KITS
USED TO EXTEND DAMPER HANDLE
WHEN WRAPPING PIPE/DUCT

SPECIFY 2.5" OR 1.0"
WIDE STANDOFF

1.5" HIGH STANDARD
1/4" OR 5/16" SHAFT ADAPTER



STEEL SHEETS

- GALVANIZED STEEL SHEETS
- STAINLESS STEEL SHEETS
- PVC COATED STEEL SHEETS
- BLACK STEEL SHEETS
- ALUMINUM STEEL SHEETS

- GS01_{XXYYZZ}
- NS01_{XXYYZZ}
- VS01_{XXYYZZ}
- BS01_{XXYYZZ}
- AS01_{XXYYZZ}

XX=WIDTH (36 OR 48), YYY=LENGTH (096 OR 120), ZZ= GAUGE (22, 24, 26, 28, 30)
AVAILABLE BEADED OR SMOOTH

CALL LUKJAN CUSTOMER SERVICE FOR THE LATEST
PRICE INFORMATION AND ORDER MINIMUMS



LUKJAN IS A LONGSTANDING MEMBER OF THE
AIR DISTRIBUTION INSTITUTE (ADI) AND PARTICIPATES IN
OTHER ASSOCIATIONS DEDICATED TO THE ADVANCEMENT
OF THE HVAC INDUSTRY.



.....

LUKJAN METAL PRODUCTS
P.O. BOX 357
645 INDUSTRY ROAD
CONNEAUT, OHIO 44030
(440) 599-8127 FAX: (440) 593-6237

111 KINGS ROAD
KINGS MOUNTAIN, NC 28086
(704) 734-0544 FAX: (704) 734-0993

WEB SITE:
WWW.LUKJAN.COM

EMAIL:
SALES@LUKJAN.COM

.....

SERVICE ♦ QUALITY ♦ TRUST