

Step 1. Select Burner Chassis

Appliance	Input Oil GPM	Input Gas MBH	Burner Model	Chassis Part No.	Mode	Oil Spec Nozzle	Pump Pressure	Head Setting ②	Low Fire Air Setting ②
-----------	---------------	---------------	--------------	------------------	------	-----------------	---------------	----------------	------------------------

BURNHAM

V906A	7.00	1010	702G/O	99753V50M	L-H-0 ①	4.00 60P	100/300	1/4"	1/2"
V907A	8.30	1198	702G/O	99753V50M	L-H-0 ①	5.00 60P	100/300	7/16"	1/2"
V908A	9.60	1386	702G/O	99753V50M	L-H-0 ①	5.50 60P	100/300	3/4"	9/16"

PEERLESS

LC-05	6.10	881	702G/O	99747V50M	L-H-0 ①	3.50 45P	100/300	3/16"	5/16"
LC-06	7.50	1,077	702G/O	99747V50M	L-H-0 ①	4.50 45P	100/300	5/16"	7/16"
LC-07	8.80	1,273	702G/O	99747V50M	L-H-0 ①	5.00 45P	100/300	1/2"	3/8"
LC-08	10.20	1,469	702G/O	99747V50M	L-H-0 ①	6.00 45P	100/300	1"	7/16"

SMITH

19A-6	6.50	931	702G/O	99751V50M	L-H-0 ①	3.75 60P	100/300	1/4"	5/16"
19A-7	6.90	1,137	702G/O	99751V50M	L-H-0 ①	4.50 70B	100/300	3/8"	1/2"
19A-8	9.30	1,342	702G/O	99751V50M	L-H-0 ①	5.00 70B	100/300	1/2"	1/2"

WEIL-MCLAIN

780	6.50	935	702G/O	99752V50M	L-H-0 ①	3.75 45P	100/300	3/16"	3/8"
880	6.50	1,082	702G/O	99752V50M	L-H-0 ①	4.50 45P	100/300	5/16"	3/8"
980	8.50	1,230	702G/O	99752V50M	L-H-0 ①	5.00 45P	100/300	3/8"	7/16"
1080	9.60	1,378	702G/O	99752V50M	L-H-0 ①	5.50 45P	100/300	5/8"	9/16"
488	7.00	1,010	702G/O	99752V50M	L-H-0 ①	4.00 70P	100/300	5/16"	3/8"
588	9.40	1,357	702G/O	99752V50M	L-H-0 ①	5.50 60P	100/300	1 1/4"	3/8"

① Can convert to L-H-L by adding high fire limit control and removing jumper in control panel. Call for assistance

② Head Setting and Low Fire Air Setting represent starting points. All burners must be set up with combustion test equipment.

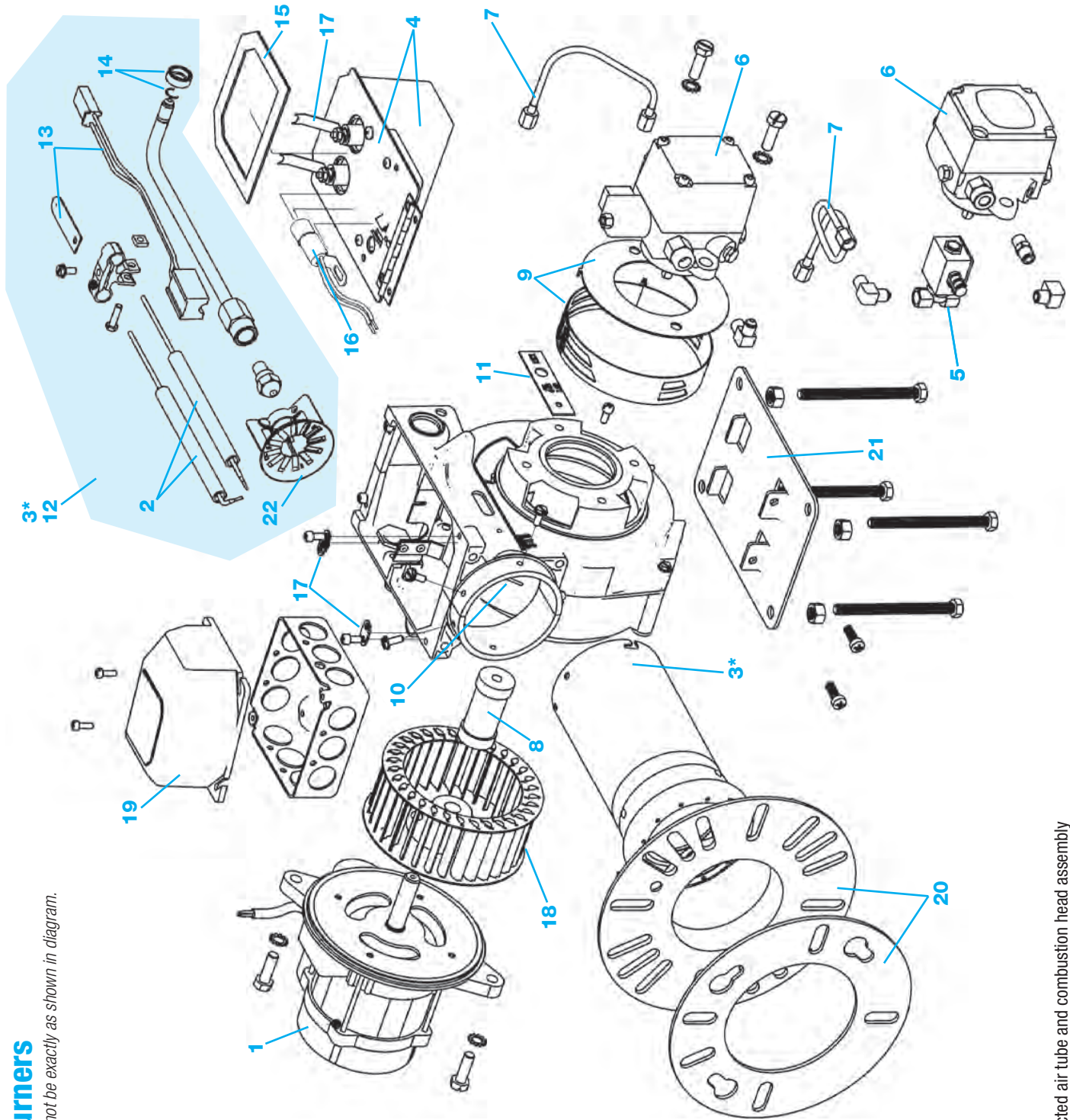
Step 2. Select Gas Train

Part No.	Gas Pressure	Max MBH	Description
99743C	< 5" WC ⓘ	950	1" Gas Train with Low and High Gas Pressure Switches
	> 5" WC ⓘ	1,100	
99743F	< 5" WC ⓘ	1,050	1-1/4" Gas Train with Low and High Gas Pressure Switches
	> 5" WC ⓘ	1,350	
99743H	< 5" WC ⓘ	1,200	1-1/2" Gas Train with Low and High Gas Pressure Switches
	> 5" WC ⓘ	1,600	
99743K	< 5" WC ⓘ	1,600	2" Gas Train with Low and High Gas Pressure Switches
	> 5" WC ⓘ	1,600	

ⓘ **IMPORTANT:** Gas pressure can fluctuate based on local area demand. Select the gas train that corresponds to the lowest anticipated pressure. When in doubt, select the next larger train size or call Tech Support at 800-989-2275 for assistance.

Step 3. Select Orifice

Part No.	Fuel
73007	Natural Gas
73007A	Propane



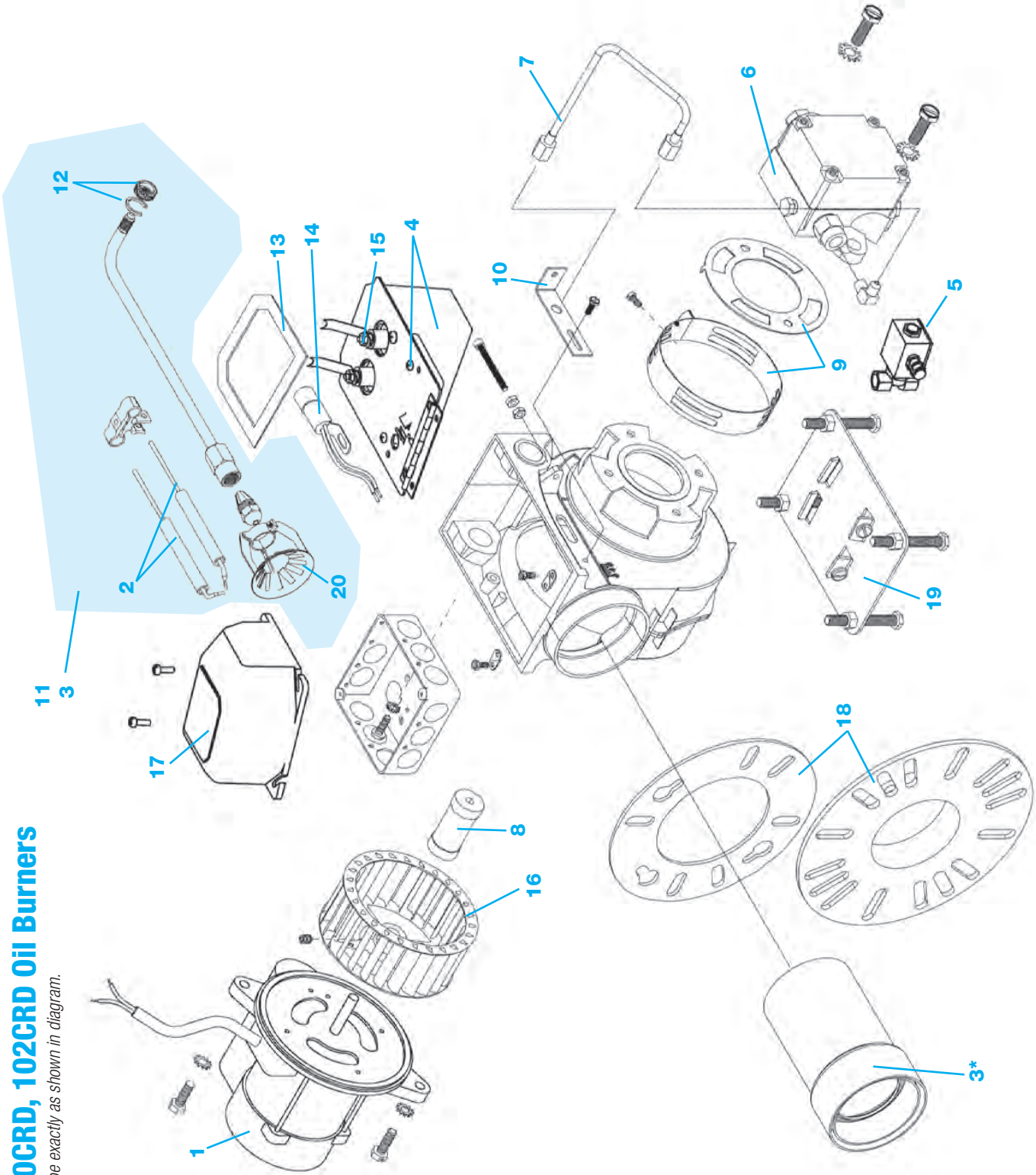
EZ Oil Burners

Note: Parts may not be exactly as shown in diagram.

*3 includes selected air tube and combustion head assembly

ITEM	PART NO.	DESCRIPTION	EZ1	EZ2	EZ3
1	98022S	1/6HP PSC Motor, 48 M Frame	•	•	•
2	82750S	Electrode set (2), - 4", 5-3/4" OAL	•		
	82768S	Electrode set (2), - 5", 6-3/4" OAL	•	•	•
	82776S	Electrode set (2), - 7", 8-3/4" OAL	•	•	•
	82784S	Electrode set (2), - 9", 10-3/4" OAL	•	•	•
	82792S	Electrode set (2), - 11", 12-3/4" OAL	•	•	•
3	78071S	EZ1 5" Air Tube/Combustion Head Assy	•		
	78089S	EZ1 7" Air Tube/Combustion Head Assy	•		
	78105S	EZ1 9" Air Tube/Combustion Head Assy	•		
	78113S	EZ1 11" Air Tube/Combustion Head Assy	•		
	84764S	EZ2/3 5" Air Tube/Combustion Head Assy	•	•	•
	84772S	EZ2/3 7" Air Tube/Combustion Head Assy	•	•	•
4	41000S	110V Ignitor	•	•	•
	41000S0CAS	110V Ignitor on Baseplate	•	•	•
5	SVC10FFS	Oil Valve	•	•	•
	98289S	Oil Valve Kit with fittings	•	•	•
6	22996S	Fuel Unit A2VA-7116	•	•	•
	98750S	Fuel Unit A2VA-3006 with solenoid	•	•	•
7	34397S	Oil line kit (incl. all oil lines)	•	•	•
	34470S	Oil line for Pump to Combustion Head	•	•	•
8	75564S	Fuel Unit Coupling	•	•	•
9	98055S	EZ1 Airband/Air Shutter Kit	•		
	98087S	EZ2 Airband/Air Shutter Kit	•	•	
	98096S	EZ3 Airband/Air Shutter Kit			•
10	98059AS	Augmentor, rivet & washer kit	•	•	•

ITEM	PART NO.	DESCRIPTION	EZ1	EZ2	EZ3
11	81570S	Head bar kit (7 bars & screw)	•		
	84715S	Head bar kit (4 bars & screw)		•	
	86389S	Head bar kit (3 bars & screw)			•
12	77941S	Combustion Head Assy 4", 6-3/4" OAL	•		
	77958S	Combustion Head Assy 5", 7-3/4" OAL	•	•	•
	77966S	Combustion Head Assy 7", 9-3/4" OAL	•	•	•
	77974S	Combustion Head Assy 9", 11-3/4" OAL	•	•	•
	77982S	Combustion Head Assy 11", 13-3/4" OAL	•	•	•
13	66795S	Nozzle Line Heater Kit	•	•	•
14	50624S	C-Ring & Thumb nut kit	•	•	•
15	40167S	Ignitor Baseplate Gasket	•	•	•
16	14407S0ES	CAD Cell Kit	•	•	•
17	41DTK01S	Universal Terminal Kit	•	•	•
18	77933S	Blower wheel / fan, 5-1/16" OD x 2" W, 1/2" BORE	•	•	•
19	70200S	Universal Primary w/ Display 70200	•	•	•
	48245S	Model 48245 Primary w/ Smart Ignition	•	•	•
	4020002S	Model 40200 Primary 30/15/30	•	•	•
	5020002S	Model 50200 Primary 30/15/30	•	•	•
	6020002S	Model 60200 Primary 15/15/15	•	•	•
20	81372S	Mounting Flange & Gasket	•	•	•
	82560S	Mounting Flange & Gasket 10-Pak	•	•	•
	50821S	Gasket Only 10-Pak	•	•	•
21	23317S	Pedestal w/Hardware	•	•	•
22	77438S	Retention Ring Assy	•	•	•



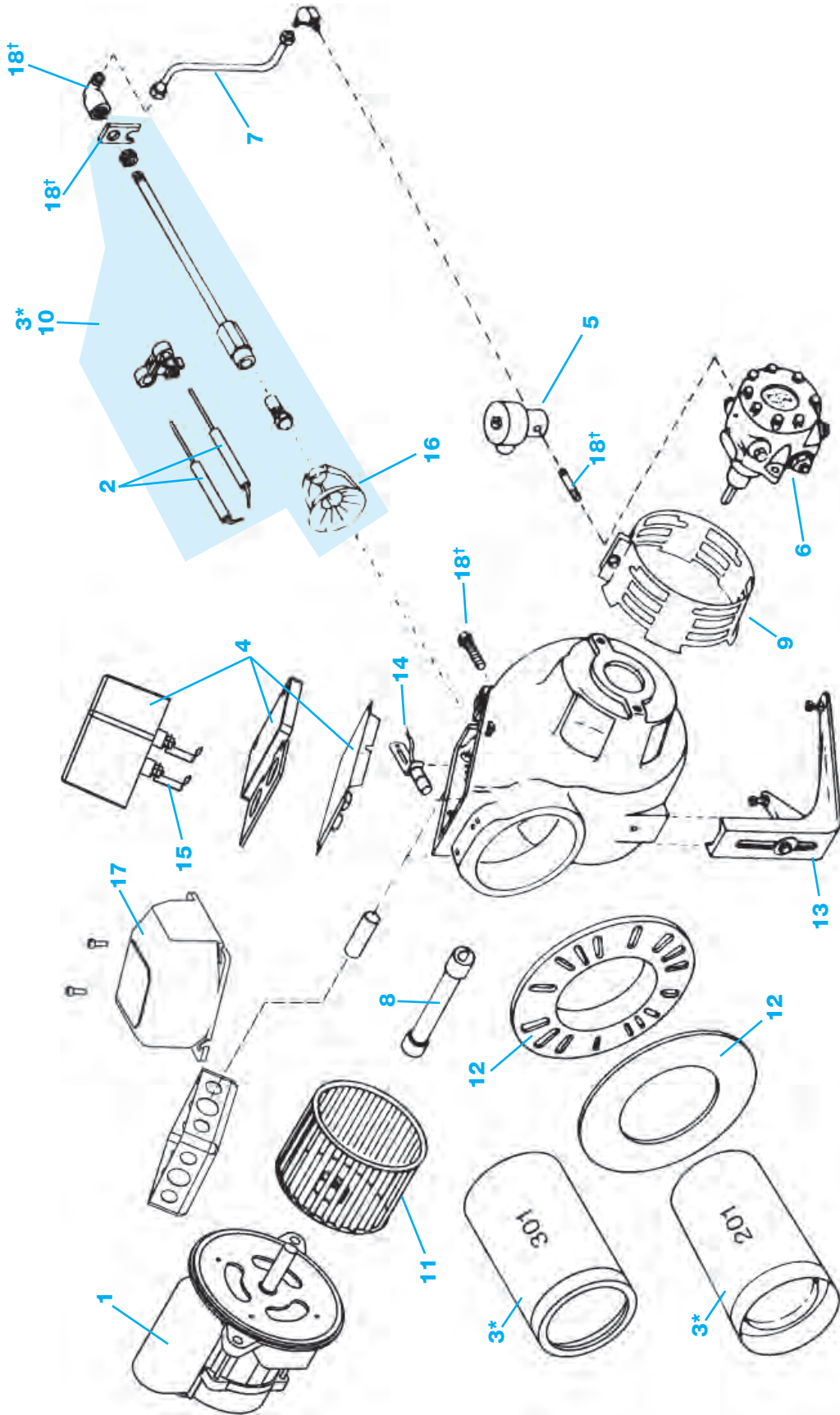
REPLACEMENT PARTS
48
99FRD, 100CRD, 102CRD Oil Burners

Note: Parts may not be exactly as shown in diagram.

*3 includes selected air tube and combustion head assembly

ITEM	PART NO.	DESCRIPTION	99FRD	100CRD	102CRD
1	98022S	1/6HP PSC Motor, 48 M Frame		•	•
2	82768S	Electrode set (2), - 5", 6-3/4" OAL	•	•	•
	82776S	Electrode set (2), - 7", 8-3/4" OAL	•	•	•
	82784S	Electrode set (2), - 9", 10-3/4" OAL	•	•	•
	82792S	Electrode set (2), - 11", 12-3/4" OAL	•	•	•
3	20180S	99FRD/100CRD 5" Air Tube/Combustion Head Assy	•		
	20230S	99FRD/100CRD 7" Air Tube/Combustion Head Assy	•	•	
	20313S	99FRD/100CRD 9" Air Tube/Combustion Head Assy	•	•	
	19919S	99FRD/100CRD 11" Air Tube/Combustion Head Assy	•	•	
	21790S	102CRD 5" B Air Tube/Combustion Head Assy			•
	21857S	102CRD 7" B Air Tube/Combustion Head Assy			•
	21881S	102CRD 9" B Air Tube/Combustion Head Assy			•
	21691S	102CRD 11" B Air Tube/Combustion Head Assy			•
	21980S	102CRD 5" C Air Tube/Combustion Head Assy			•
	21998S	102CRD 7" C Air Tube/Combustion Head Assy			•
22004S	102CRD 9" C Air Tube/Combustion Head Assy			•	
21915S	102CRD 11" C Air Tube/Combustion Head Assy			•	
4	41000S	110V Ignitor	•	•	•
	41000S0CAS	110V Ignitor on Baseplate	•	•	•
5	SVC10FFS	Oil Valve	•	•	•
	98289S	Oil Valve Kit with fittings	•	•	•
6	22996S	Fuel Unit A2VA-7116	•	•	
	98750S	Fuel Unit A2VA-3006	•	•	
	23234S	Fuel Unit A2VA-7916			•
7	34397S	Oil line kit (incl. all oil lines)	•	•	•
8	75564S	Fuel Unit Coupling	•	•	•
9	98100S	99FRD/100CRD Air Band Shutter Single Kit	•	•	
	98101S	99FRD/100CRD/102CRD Air Band Shutter Dual Kit	•	•	•

ITEM	PART NO.	DESCRIPTION	99FRD	100CRD	102CRD
10	5489001S	Nozzle Line adjusting slide	•		
11	51805S	Combustion Head Assy 5", 8-1/8" OAL	•	•	
	51854S	Combustion Head Assy 7", 10-1/8" OAL	•	•	
	51896S	Combustion Head Assy 9", 12-1/8" OAL	•	•	
	51599S	Combustion Head Assy 11", 14-1/8" OAL	•	•	
	52316S	Combustion Head Assy 5", 8-1/8" OAL			•
	52373S	Combustion Head Assy 7", 10-1/8" OAL			•
52472S	Combustion Head Assy 9", 12-1/8" OAL			•	
52183S	Combustion Head Assy 11", 14-1/8" OAL			•	
12	50624S	C-Ring & Thumb nut kit	•	•	•
13	40167S	Ignitor Baseplate Gasket	•	•	•
14	14407S0ES	CAD Cell Kit	•	•	•
15	41DTK01S	Universal Terminal Kit	•	•	•
16	28605S	Blower wheel / fan 99FRD, 5-1/4" OD x 2" W, 1/2" BORE	•		
	28530S	Blower wheel / fan 100CRD, 4-1/4" OD x 2-5/16" W, 1/2" BORE		•	
	28506S	Blower wheel / fan 102CRD, 5-1/16" OD x 2-1/4" W, 1/2" BORE			•
17	70200S	Universal Primary w/ Display 70200	•	•	•
	48245S	Model 48245 Primary w/ Smart Ignition	•	•	•
	4020002S	Model 40200 Primary 30/15/30	•	•	•
	5020002S	Model 50200 Primary 30/15/30	•	•	•
6020002S	Model 60200 Primary 15/15/15	•	•	•	
18	23150S	Mounting Flange & Gasket	•	•	•
	40287S	Gasket only	•	•	•
19	23317S	Pedestal w/Hardware	•	•	•
20	54981S	Retention Ring Assy 99/100	•	•	
	55061S	Retention Ring Assy 102CRD			•



50 **201-301 Oil Burner**

Note: Parts may not be exactly as shown in diagram.

*3 includes selected air tube and combustion head assembly
†18 includes multiple parts

ITEM	PART NO.	DESCRIPTION	201CRD	301CRD
10	54155S	7" Nominal, 16-3/4" OAL Combustion Head Assy	•	
	54205S	9" Nominal, 18-3/4" OAL Combustion Head Assy	•	
	53975S	11" Nominal, 20-3/4" OAL Combustion Head Assy	•	
	54031S	15" Nominal, 24-5/16" OAL Combustion Head Assy	•	
	55574S	6" Nominal 16-3/4" OAL Combustion Head Assy		•
	55616S	8" Nominal 18-3/4" OAL Combustion Head Assy		•
	55434S	10" Nominal 20-3/4" OAL Combustion Head Assy		•
11	55491S	14" Nominal 24-3/4" OAL Combustion Head Assy		•
	28563S	Blower wheel/fan, 5-3/4" OD x 4" W, 1/2" BORE	•	•
12	23259S	4" Universal Flange & Gasket	•	•
	23184S	4" Pressure Flange & Gasket	•	•
13	23358S	Pedestal w/ hardware	•	•
14	14407S0ES	CAD Cell Kit	•	•
15	41DTK01S	Universal Ignitor Terminal kit	•	•
16	55418S	Retention Ring Assy 201CRD	•	
	55715S	Retention Ring Assy 3010CRD		•
17	70200S	Universal Primary w/ Display 70200	•	•
	4020002S	Model 40200 Primary 30/15/30	•	•
	5020002S	Model 50200 Primary 30/15/30	•	•
	6020002S	Model 60200 Primary 15/15/15	•	•
18	2301KITS	Hardware Kit (Yoke, CH elbow, OV Nip, CH Adj screw)	•	•

ITEM	PART NO.	DESCRIPTION	201CRD	301CRD
1	98630S	1/4 hp, 120V, 60HZ, 48N Frame Motor	•	•
2	82776S	Electrode Set (2), 7/6" Nominal, Approx. 8-1/2" OAL	•	•
	82784S	Electrode Set (2), 9/8" Nominal, Approx. 10-3/4" OAL	•	•
	82792S	Electrode Set (2), 11/10" Nominal, Approx. 12-1/2" OAL	•	•
	82818S	Electrode Set (2), 15/14" Nominal, Approx. 16-1/2" OAL	•	•
	82826S	Electrode Set (2), 18/17" Nominal, Approx. 19-1/2" OAL	•	•
	22046S	201CRD 7" Air Tube/Combustion Head Assy	•	
22053S	201CRD 9" Air Tube/Combustion Head Assy	•		
22012S	201CRD 11" Air Tube/Combustion Head Assy	•		
22020S	201CRD 15" Air Tube/Combustion Head Assy	•		
3	22293S	301CRD B-Style 6" Air Tube/Combustion Head Assy		•
	22327S	301CRD B-Style 8" Air Tube/Combustion Head Assy		•
	22202S	301CRD B-Style 10" Air Tube/Combustion Head Assy		•
	22236S	301CRD B-Style 14" Air Tube/Combustion Head Assy		•
	22442S	301CRD C-Style 6" Air Tube/Combustion Head Assy		•
	22475S	301CRD C-Style 8" Air Tube/Combustion Head Assy		•
	22350S	301CRD C-Style 10" Air Tube/Combustion Head Assy		•
	22384S	301CRD C-Style 14" Air Tube/Combustion Head Assy		•
	41000S	110V Ignitor	•	•
	41000S0SC	110V Ignitor on Baseplate	•	•
5	SVC10FFS	Oil Valve	•	•
	98289S	Oil Valve Kit with fittings	•	•
6	23234S	Fuel Unit, 1 Stage, A2YA-7916 100PSI	•	•
	74443S	Fuel Unit, 1 Stage, NYC, A2YA-7916 100PSI	•	•
	74443HPS	Fuel Unit, 1 Stage, NYC, A2YA-7916 150PSI	•	•
	23267S	Fuel Unit, 2 Stage, B2YA-8916 100PSI	•	•
	74459S	Fuel Unit, 2 Stage, NYC, B2YA-8916 100PSI	•	•
	74559HPAS	Fuel Unit, 2 Stage, NYC, B2YA-8916 140PSI	•	•
74559HPS	Fuel Unit, 2 Stage, NYC, B2YA-8916 150PSI	•	•	
7	34785S	Oil line kit (incl. all oil lines)	•	•
8	28720S	Fuel Unit Coupling	•	•
9	47001S	201/301CRD 4-slot Air Band	•	•