

Step 1. Select Burner Chassis

Appliance	Input Oil GPM	Input Gas MBH	Burner Model	Chassis Part No.	Mode	Oil Spec Nozzle	Pump Pressure	Head Setting ②	Low Fire Air Setting ②
-----------	---------------	---------------	--------------	------------------	------	-----------------	---------------	----------------	------------------------

BURNHAM

V906A	7.00	1010	702G/O	99753V50M	L-H-0 ①	4.00 60P	100/300	1/4"	1/2"
V907A	8.30	1198	702G/O	99753V50M	L-H-0 ①	5.00 60P	100/300	7/16"	1/2"
V908A	9.60	1386	702G/O	99753V50M	L-H-0 ①	5.50 60P	100/300	3/4"	9/16"

PEERLESS

LC-05	6.10	881	702G/O	99747V50M	L-H-0 ①	3.50 45P	100/300	3/16"	5/16"
LC-06	7.50	1,077	702G/O	99747V50M	L-H-0 ①	4.50 45P	100/300	5/16"	7/16"
LC-07	8.80	1,273	702G/O	99747V50M	L-H-0 ①	5.00 45P	100/300	1/2"	3/8"
LC-08	10.20	1,469	702G/O	99747V50M	L-H-0 ①	6.00 45P	100/300	1"	7/16"

SMITH

19A-6	6.50	931	702G/O	99751V50M	L-H-0 ①	3.75 60P	100/300	1/4"	5/16"
19A-7	6.90	1,137	702G/O	99751V50M	L-H-0 ①	4.50 70B	100/300	3/8"	1/2"
19A-8	9.30	1,342	702G/O	99751V50M	L-H-0 ①	5.00 70B	100/300	1/2"	1/2"

WEIL-MCLAIN

780	6.50	935	702G/O	99752V50M	L-H-0 ①	3.75 45P	100/300	3/16"	3/8"
880	6.50	1,082	702G/O	99752V50M	L-H-0 ①	4.50 45P	100/300	5/16"	3/8"
980	8.50	1,230	702G/O	99752V50M	L-H-0 ①	5.00 45P	100/300	3/8"	7/16"
1080	9.60	1,378	702G/O	99752V50M	L-H-0 ①	5.50 45P	100/300	5/8"	9/16"
488	7.00	1,010	702G/O	99752V50M	L-H-0 ①	4.00 70P	100/300	5/16"	3/8"
588	9.40	1,357	702G/O	99752V50M	L-H-0 ①	5.50 60P	100/300	1 1/4"	3/8"

① Can convert to L-H-L by adding high fire limit control and removing jumper in control panel. Call for assistance

② Head Setting and Low Fire Air Setting represent starting points. All burners must be set up with combustion test equipment.

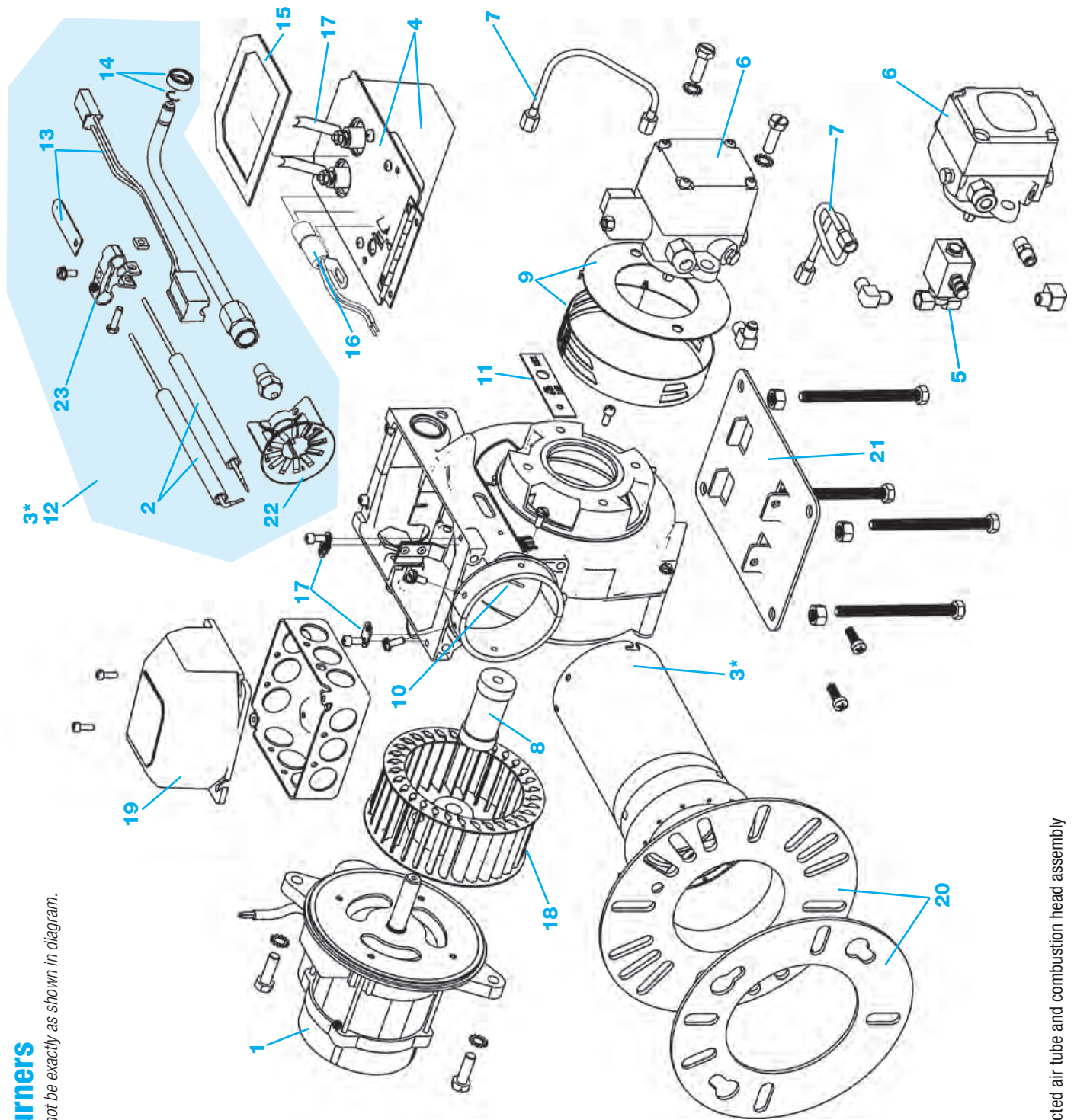
Step 2. Select Gas Train

Part No.	Gas Pressure	Max MBH	Description
99743C	< 5" WC ⓘ	950	1" Gas Train with Low and High Gas Pressure Switches
	> 5" WC ⓘ	1,100	
99743F	< 5" WC ⓘ	1,050	1-1/4" Gas Train with Low and High Gas Pressure Switches
	> 5" WC ⓘ	1,350	
99743H	< 5" WC ⓘ	1,200	1-1/2" Gas Train with Low and High Gas Pressure Switches
	> 5" WC ⓘ	1,600	
99743K	< 5" WC ⓘ	1,600	2" Gas Train with Low and High Gas Pressure Switches
	> 5" WC ⓘ	1,600	
VENTLESS DUAL FUEL BURNERS			
99743BNV	< 5" WC ⓘ	950	1" Gas Train for Low Pressure up to 950,000 BTUH, Standard Pressure up to 1,100,000 BTUH.
99743BNVP	> 5" WC ⓘ	1,100	
99743ENV	< 5" WC ⓘ	1,050	1-1/4" Gas Train for Low Pressure up to 1,050 BTUH, Standard Pressure up to 1,350,000 BTUH.
99743ENVP	> 5" WC ⓘ	1,350	
99743GNV	< 5" WC ⓘ	1,200	1-1/2" Gas Train for Low Pressure up to 1,200,000 BTUH, Standard Pressure up to 1,600,000 BTUH.
99743GNVP	> 5" WC ⓘ	1,600	
99743JNV	< 5" WC ⓘ	1,600	2" Gas Train for Low and Standard Pressure up to 1,600,000 BTUH.
99743JNVP	> 5" WC ⓘ	1,600	

ⓘ **IMPORTANT:** Gas pressure can fluctuate based on local area demand. Select the gas train that corresponds to the lowest anticipated pressure. When in doubt, select the next larger train size or call Tech Support at 800-989-2275 for assistance.

Step 3. Select Orifice

Part No.	Fuel
73007	Natural Gas
73007A	Propane



EZ Oil Burners

Note: Parts may not be exactly as shown in diagram.

*3 includes selected air tube and combustion head assembly

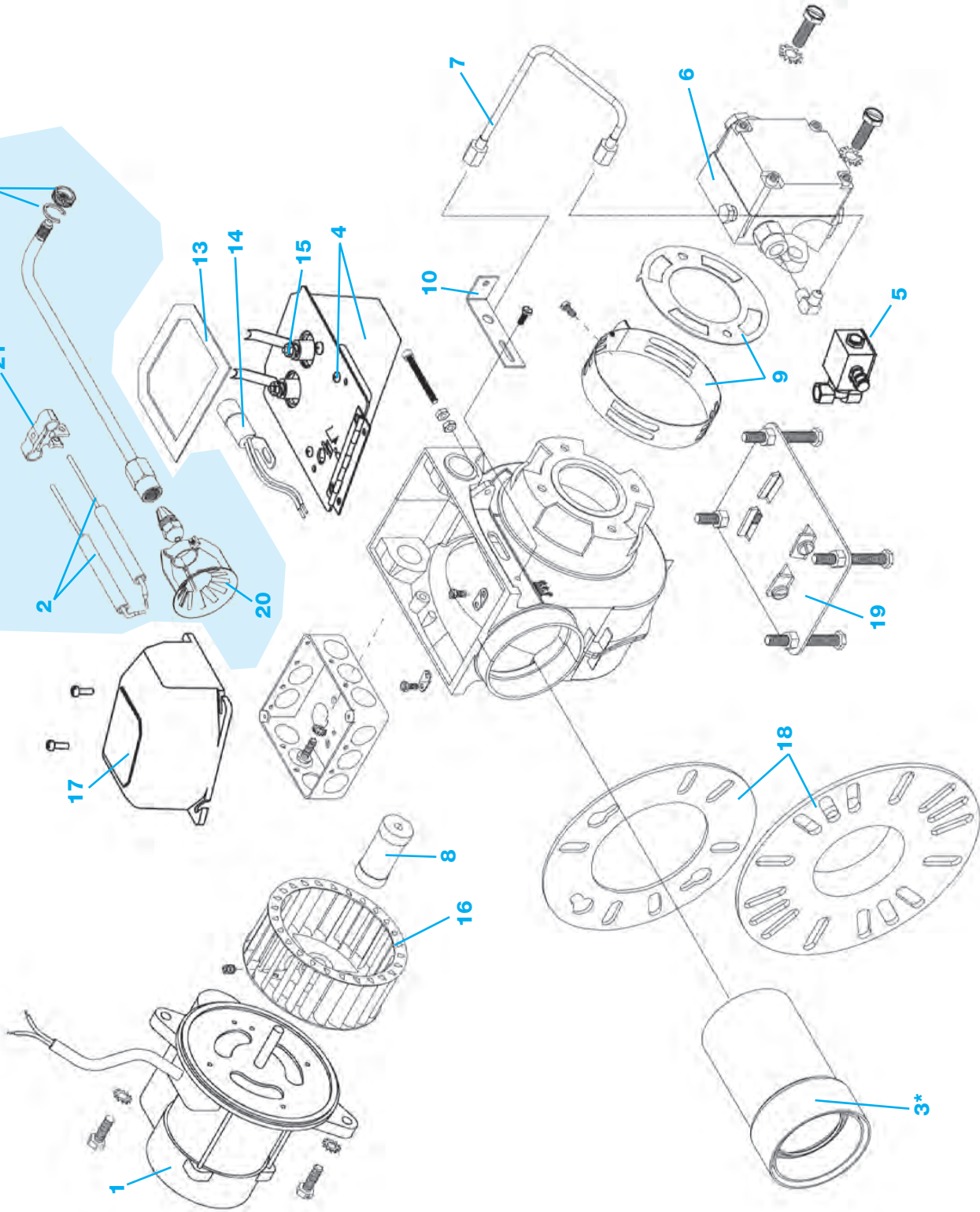
ITEM	PART NO.	DESCRIPTION	EZ1	EZ2	EZ3
12	77941S	Combustion Head Assy 4", 6-3/4" OAL	•		
	77958S	Combustion Head Assy 5", 7-3/4" OAL	•	•	•
	77966S	Combustion Head Assy 7", 9-3/4" OAL	•	•	•
	77974S	Combustion Head Assy 9", 11-3/4" OAL	•	•	•
	77982S	Combustion Head Assy 11", 13-3/4" OAL	•	•	•
13	66795S	Nozzle Line Heater Kit	•	•	•
14	50624S	C-Ring & Thumb nut kit	•	•	•
15	40167S	Ignitor Baseplate Gasket	•	•	•
16	14407S0ES	CAD Cell Kit	•	•	•
17	41DTK01S	Universal Terminal Kit	•	•	•
18	77933S	Blower wheel / fan, 5-1/16" OD x 2" W, 1/2" BORE	•	•	•
19	70200S	Universal Primary w/ Display 70200	•	•	•
	48245S	Model 48245 Primary w/ Smart Ignition	•	•	•
	4020002S	Model 40200 Primary 30/15/30	•	•	•
	5020002S	Model 50200 Primary 30/15/30	•	•	•
	6020002S	Model 60200 Primary 15/15/15	•	•	•
20	81372S	Mounting Flange & Gasket	•	•	•
	82560S	Mounting Flange & Gasket 10-Pak	•	•	•
	50821S	Gasket Only 10-Pak	•	•	•
21	23317S	Pedestal w/Hardware	•	•	•
22	77438S	Retention Ring Assy	•	•	•
23	23135S	Electrode Bracket w/screws and nut	•	•	•
24	PROTOTYPE	Residential Oil Replacement Parts Tote: Includes 70200S Control, Cad Cell Kit, 45000S Ignitor, 82792S Electrodes, EZ1 Head Bar Kit, Oil line kit, Nozzle line heater kit, EZ and 99FRD Retention Rings, Electrode Setting Gauges and E-Ring and Thumb nut kit. (not shown)	•	•	•

ITEM	PART NO.	DESCRIPTION	EZ1	EZ2	EZ3
1	98022S	1/6HP PSC Motor, 48 M Frame	•	•	•
2	82750S	Electrode set (2), - 4", 5-3/4" OAL	•		
	82768S	Electrode set (2), - 5", 6-3/4" OAL	•	•	•
	82776S	Electrode set (2), - 7", 8-3/4" OAL	•	•	•
	82784S	Electrode set (2), - 9", 10-3/4" OAL	•	•	•
	82792S	Electrode set (2), - 11", 12-3/4" OAL	•	•	•
3	78071S	EZ1 5" Air Tube/Combustion Head Assy	•		
	78089S	EZ1 7" Air Tube/Combustion Head Assy	•		
	78105S	EZ1 9" Air Tube/Combustion Head Assy	•		
	78113S	EZ1 11" Air Tube/Combustion Head Assy	•		
	84764S	EZ2/3 5" Air Tube/Combustion Head Assy		•	•
	84772S	EZ2/3 7" Air Tube/Combustion Head Assy		•	•
	84780S	EZ2/3 9" Air Tube/Combustion Head Assy		•	•
84798S	EZ2/3 11" Air Tube/Combustion Head Assy		•	•	
4	41000S	110V Ignitor	•	•	•
	41000S0CAS	110V Ignitor on Baseplate	•	•	•
5	SVC10FFS	Oil Valve	•	•	•
	98289S	Oil Valve Kit with fittings	•	•	•
6	22996S	Fuel Unit A2VA-7116	•	•	•
	98750S	Fuel Unit A2VA-3006 with solenoid	•	•	•
7	34397S	Oil line kit (incl. all oil lines)	•	•	•
	34470S	Oil line for Pump to Combustion Head	•	•	•
8	75564S	Fuel Unit Coupling	•	•	•
9	98055S	EZ1 Airband/Air Shutter Kit	•		
	98087S	EZ2 Airband/Air Shutter Kit		•	
	98096S	EZ3 Airband/Air Shutter Kit			•
10	98059AS	Augmentor, rivet & washer kit	•	•	•
11	81570S	Head bar kit (7 bars & screw)	•		
	84715S	Head bar kit (4 bars & screw)		•	
	86389S	Head bar kit (3 bars & screw)			•

Parts List.

48 **EZ66, 99FRD, 100CRD, 102CRD Oil Burners**

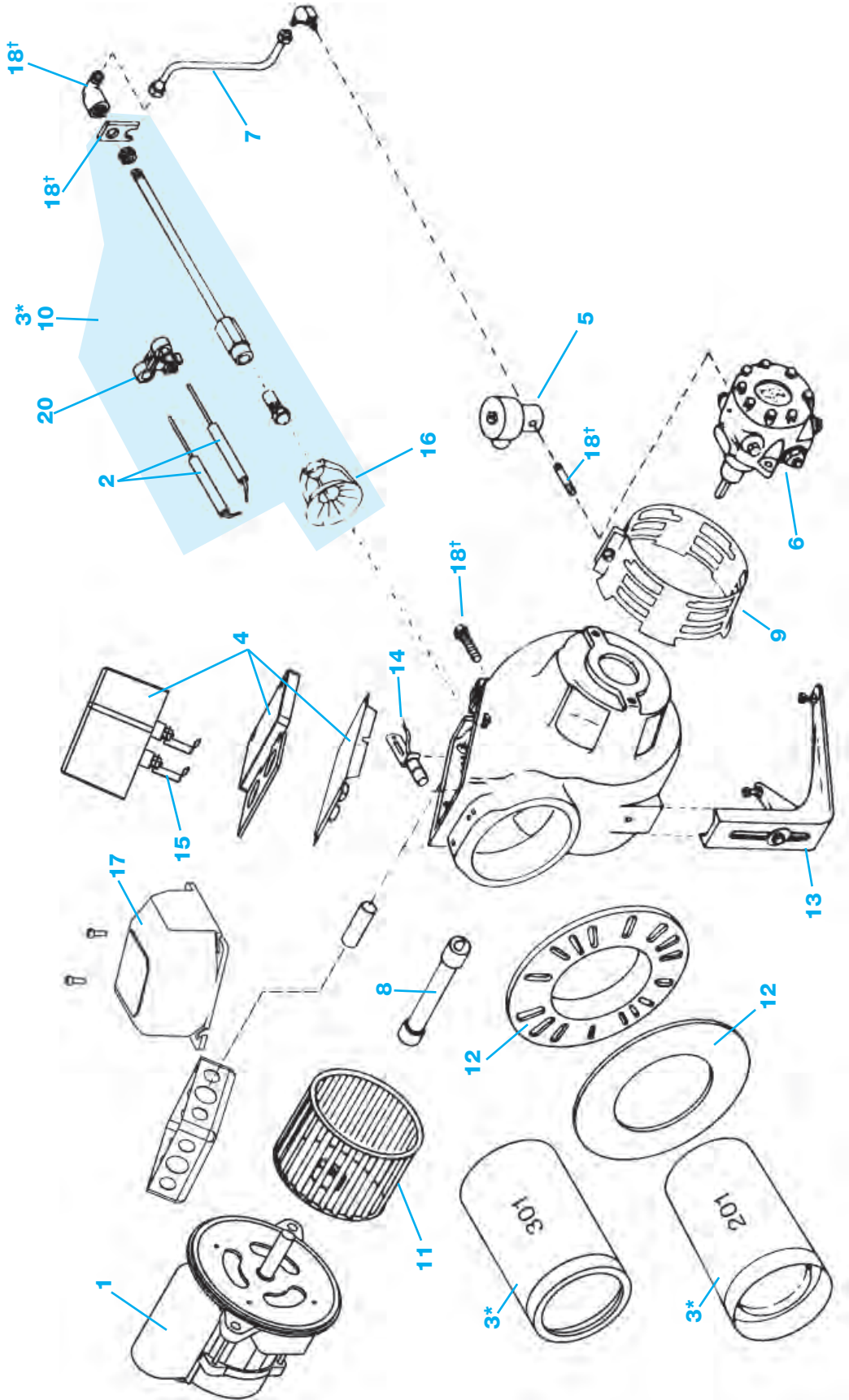
Note: Parts may not be exactly as shown in diagram.



*3 includes selected air tube and combustion head assembly

ITEM	PART NO.	DESCRIPTION	EZ66	99FRD	100CRD	102CRD
1	98022S	1/6HP PSC Motor, 48 M Frame	•	•	•	•
2	82768S	Electrode set (2), - 5", 6-3/4" OAL	•	•	•	•
	82776S	Electrode set (2), - 7", 8-3/4" OAL	•	•	•	•
	82784S	Electrode set (2), - 9", 10-3/4" OAL	•	•	•	•
	82792S	Electrode set (2), - 11", 12-3/4" OAL	•	•	•	•
3	20180S	99FRD/100CRD 5" Air Tube/Combustion Head Assy	•	•	•	•
	20230S	99FRD/100CRD 7" Air Tube/Combustion Head Assy	•	•	•	•
	20313S	99FRD/100CRD 9" Air Tube/Combustion Head Assy	•	•	•	•
	19919S	99FRD/100CRD 11" Air Tube/Combustion Head Assy	•	•	•	•
	21790S	102CRD 5" B Air Tube/Combustion Head Assy	•	•	•	•
	21857S	102CRD 7" B Air Tube/Combustion Head Assy	•	•	•	•
	21881S	102CRD 9" B Air Tube/Combustion Head Assy	•	•	•	•
	21691S	102CRD 11" B Air Tube/Combustion Head Assy	•	•	•	•
	21980S	102CRD 5" C Air Tube/Combustion Head Assy	•	•	•	•
	21998S	102CRD 7" C Air Tube/Combustion Head Assy	•	•	•	•
4	41000S	110V Ignitor	•	•	•	•
	41000S0CAS	110V Ignitor on Baseplate	•	•	•	•
5	SVC10FFS	Oil Valve	•	•	•	•
	98289S	Oil Valve Kit with fittings	•	•	•	•
6	22996S	Fuel Unit A2VA-7116	•	•	•	•
	98750S	Fuel Unit A2VA-3006	•	•	•	•
	23234S	Fuel Unit A2VA-7916	•	•	•	•
7	34397S	Oil line kit (incl. all oil lines)	•	•	•	•
8	75564S	Fuel Unit Coupling	•	•	•	•
9	98100S	99FRD/100CRD Air Band Shutter Single Kit	•	•	•	•
	98101S	99FRD/100CRD/102CRD Air Band Shutter Dual Kit	•	•	•	•
10	5489001S	Nozzle Line adjusting slide	•	•	•	•
	98115S	EZ66 Head Bar Kit	•	•	•	•

ITEM	PART NO.	DESCRIPTION	EZ66	99FRD	100CRD	102CRD
11	51805S	Combustion Head Assy 5", 8-1/8" OAL	•	•	•	•
	51854S	Combustion Head Assy 7", 10-1/8" OAL	•	•	•	•
	51896S	Combustion Head Assy 9", 12-1/8" OAL	•	•	•	•
	51599S	Combustion Head Assy 11", 14-1/8" OAL	•	•	•	•
	52316S	Combustion Head Assy 5", 8-1/8" OAL	•	•	•	•
	52373S	Combustion Head Assy 7", 10-1/8" OAL	•	•	•	•
12	52472S	Combustion Head Assy 9", 12-1/8" OAL	•	•	•	•
	52183S	Combustion Head Assy 11", 14-1/8" OAL	•	•	•	•
12	50624S	C-Ring & Thumb nut kit	•	•	•	•
13	40167S	Ignitor Baseplate Gasket	•	•	•	•
14	14407S0ES	CAD Cell Kit	•	•	•	•
15	41DTK01S	Universal Terminal Kit	•	•	•	•
16	28605S	Blower wheel / fan 99FRD, 5-1/4" OD x 2" W, 1/2" BORE	•	•	•	•
	28530S	Blower wheel / fan 100CRD, 4-1/4" OD x 2-5/16" W, 1/2" BORE	•	•	•	•
	28506S	Blower wheel / fan 102CRD, 5-1/16" OD x 2-1/4" W, 1/2" BORE	•	•	•	•
17	70200S	Universal Primary w/ Display 70200	•	•	•	•
	48245S	Model 48245 Primary w/ Smart Ignition	•	•	•	•
	4020002S	Model 40200 Primary 30/15/30	•	•	•	•
	5020002S	Model 50200 Primary 30/15/30	•	•	•	•
18	6020002S	Model 60200 Primary 15/15/15	•	•	•	•
	23150S	Mounting Flange & Gasket	•	•	•	•
19	40287S	Gasket only	•	•	•	•
	23317S	Pedestal w/Hardware	•	•	•	•
20	54981S	Retention Ring Assy 99/100	•	•	•	•
	55061S	Retention Ring Assy 102CRD	•	•	•	•
21	23135S	Electrode Bracket	•	•	•	•
22	PROTOTE	Residential Oil Replacement Parts Kit: Includes 70200S Control, Cad cell kit, 45000S Ignitor, 82792S Electrodes, EZ1 Head Bar Kit, Oil line kit, Nozzle line heater kit, EZ and 99FRD Retention Rings, Electrode setting gauges and E-Ring and Thumb nut kit. (not shown)	•	•	•	•



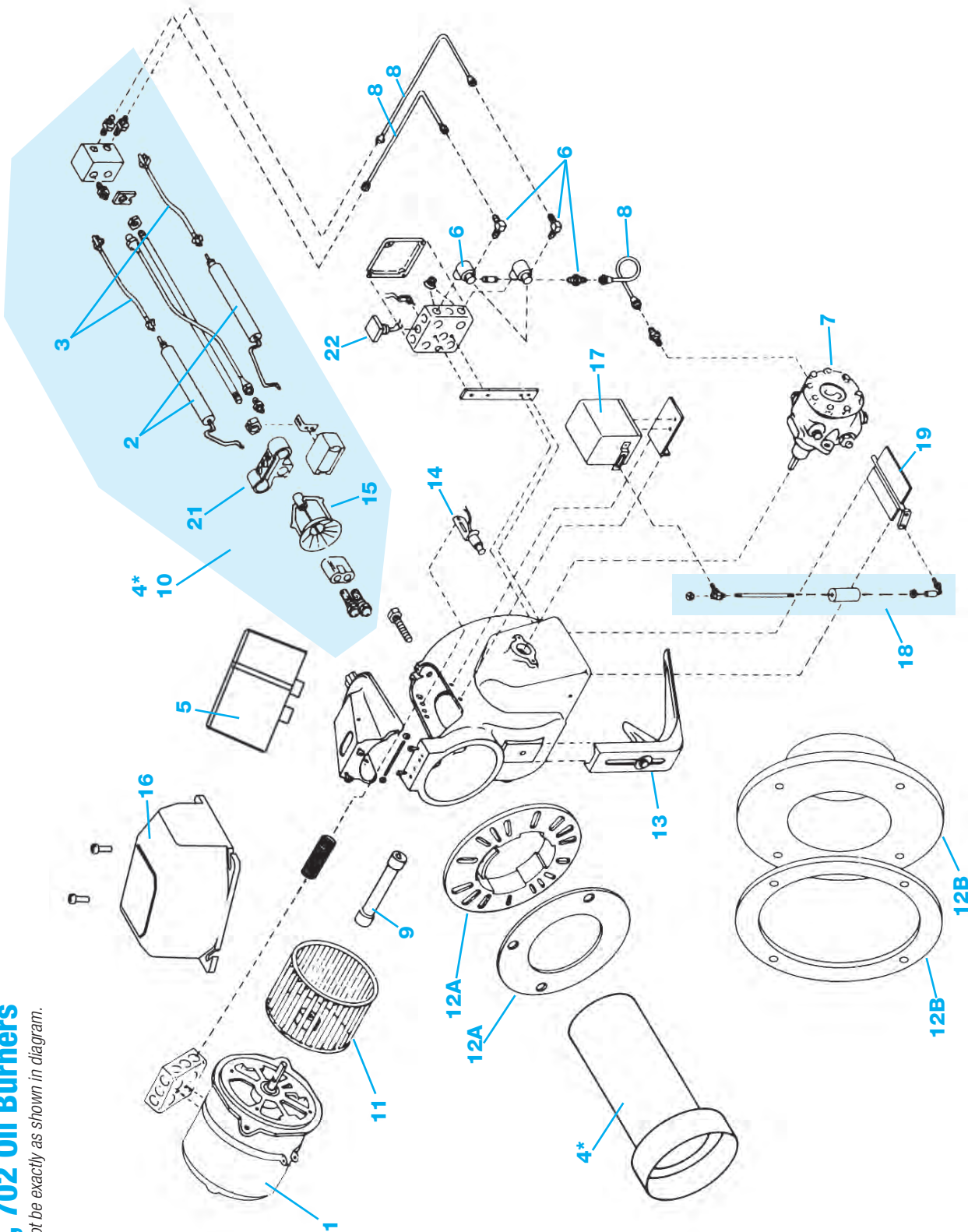
50 201-301 Oil Burner

Note: Parts may not be exactly as shown in diagram.

*3 includes selected air tube and combustion head assembly
†18 includes multiple parts

ITEM	PART NO.	DESCRIPTION	201CRD	301CRD	
10	54155S	7" Nominal, 16-3/4" OAL Combustion Head Assy	•		
	54205S	9" Nominal, 18-3/4" OAL Combustion Head Assy	•		
	53975S	11" Nominal, 20-3/4" OAL Combustion Head Assy	•		
	54031S	15" Nominal, 24-5/16" OAL Combustion Head Assy	•		
	55574S	6" Nominal 16-3/4" OAL Combustion Head Assy		•	
	55616S	8" Nominal 18-3/4" OAL Combustion Head Assy		•	
	55434S	10" Nominal 20-3/4" OAL Combustion Head Assy		•	
	55491S	14" Nominal 24-3/4" OAL Combustion Head Assy		•	
	11	28563S	Blower wheel/ fan, 5-3/4" OD x 4" W, 1/2" BORE	•	•
	12	23259S	4" Universal Flange & Gasket	•	•
23184S		4" Pressure Flange & Gasket	•	•	
13	23358S	Pedestal w/ hardware	•	•	
14	14407S0ES	CAD Cell Kit	•	•	
15	41DTK01S	Universal Ignitor Terminal Kit	•	•	
16	55418S	Retention Ring Assy 201CRD	•	•	
	55715S	Retention Ring Assy 3010CRD		•	
17	70200S	Universal Primary w/ Display 70200	•	•	
	4020002S	Model 40200 Primary 30/15/30	•	•	
	5020002S	Model 50200 Primary 30/15/30	•	•	
	6020002S	Model 60200 Primary 15/15/15	•	•	
18	2301KITS	Hardware Kit (Yoke, CH elbow, OV Nip, CH Adj screw)	•	•	
19	47035S	Pressure Augmentor (not shown)	•	•	
20	59881S	Electrode Bracket	•	•	

ITEM	PART NO.	DESCRIPTION	201CRD	301CRD
1	98630S	1/4 hp, 120V, 60HZ, 48N Frame Motor	•	•
2	82776S	Electrode Set (2), 7/6" Nominal, Approx. 8-1/2" OAL	•	•
	82784S	Electrode Set (2), 9/8" Nominal, Approx. 10-3/4" OAL	•	•
	82792S	Electrode Set (2), 11/10" Nominal, Approx. 12-1/2" OAL	•	•
	82818S	Electrode Set (2), 15/14" Nominal, Approx. 16-1/2" OAL	•	•
	82826S	Electrode Set (2), 18/17" Nominal, Approx. 19-1/2" OAL	•	•
3	22046S	201CRD 7" Air Tube/Combustion Head Assy	•	
	22053S	201CRD 9" Air Tube/Combustion Head Assy	•	
	22012S	201CRD 11" Air Tube/Combustion Head Assy	•	
	22020S	201CRD 15" Air Tube/Combustion Head Assy	•	
	22293S	301CRD B-Style 6" Air Tube/Combustion Head Assy		•
	22327S	301CRD B-Style 8" Air Tube/Combustion Head Assy		•
	22202S	301CRD B-Style 10" Air Tube/Combustion Head Assy		•
	22236S	301CRD B-Style 14" Air Tube/Combustion Head Assy		•
	22442S	301CRD C-Style 6" Air Tube/Combustion Head Assy		•
	22475S	301CRD C-Style 8" Air Tube/Combustion Head Assy		•
22350S	301CRD C-Style 10" Air Tube/Combustion Head Assy		•	
22384S	301CRD C-Style 14" Air Tube/Combustion Head Assy		•	
4	41000S	110V Ignitor	•	•
	41000S0SC	110V Ignitor on Baseplate	•	•
5	SVC10FFS	Oil Valve	•	•
	98289S	Oil Valve Kit with fittings	•	•
6	23234S	Fuel Unit, 1 Stage, A2YA-7916 100PSI	•	•
	74443S	Fuel Unit, 1 Stage, NYC, A2YA-7916 100PSI	•	•
	74443HPS	Fuel Unit, 1 Stage, NYC, A2YA-7916 150PSI	•	•
	23267S	Fuel Unit, 2 Stage, B2YA-8916 100PSI	•	•
	74459S	Fuel Unit, 2 Stage, NYC, B2YA-8916 100PSI	•	•
7	74559HPAS	Fuel Unit, 2 Stage, NYC, B2YA-8916 140PSI	•	•
	74559HPS	Fuel Unit, 2 Stage, NYC, B2YA-8916 150PSI	•	•
7	34785S	Oil line kit (incl. all oil lines)	•	•
8	28720S	Fuel Unit Coupling	•	•
9	47001S	201/301CRD 4-slot Air Band	•	•



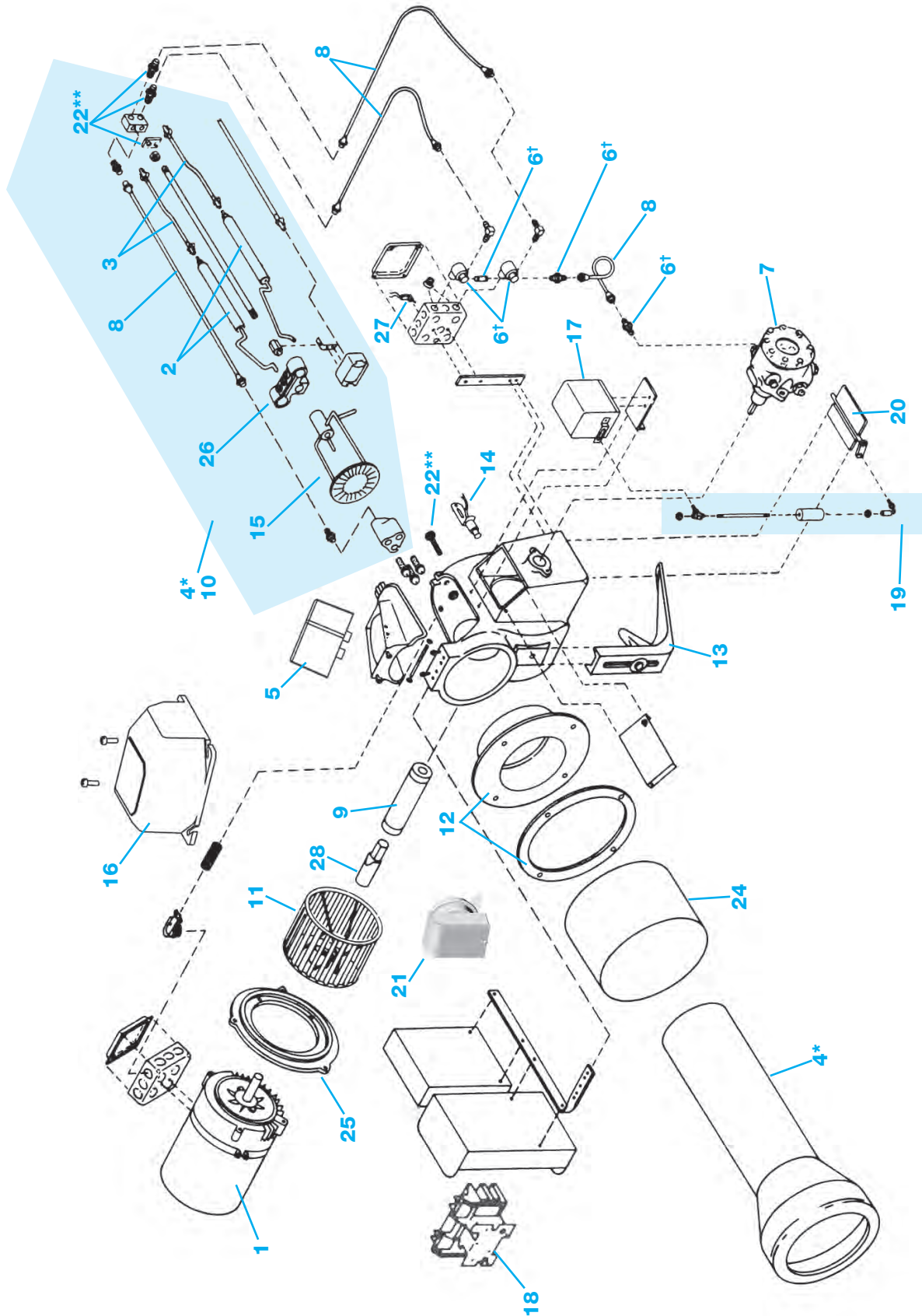
52 601. 701, 702 Oil Burners

Note: Parts may not be exactly as shown in diagram.

*4 includes selected air tube and combustion head assembly

ITEM	PART NO.	DESCRIPTION	601CRD	701CRD	702CRD
1	27706S	1/2 hp, 115/230V, 60HZ, 1 Phase, 3450 rpm Motor	•	•	•
2	98507S	Electrode Set (2), Approx. 9-1/4" OAL	•	•	•
3	56069S	Ignition Wire 9-1/4" OAL, for Nominal 12" Air Tube (2 req'd)	•	•	•
	56036S	Ignition Wire 10-3/4" OAL for Nominal 14" Air Tube (2 req'd)	•	•	•
	56085S	Ignition Wire 8-3/8" OAL, for Nominal 10" Air Tube (2 req'd)	•	•	•
4	22517S	601CRD 10" Standard Air Tube/Combustion Head Assy	•		
	22541S	601CRD 12" Standard Air Tube/Combustion Head Assy	•		
	22574S	601CRD 14" Standard Air Tube/Combustion Head Assy	•		
	22632S	701CRD 10" Standard Air Tube/Combustion Head Assy		•	
	22665S	701CRD 12" Standard Air Tube/Combustion Head Assy		•	
	22699S	701CRD 14" Standard Air Tube/Combustion Head Assy		•	
5	68650S	702CRD 10" Standard Air Tube/Combustion Head Assy			•
	41000S	110V Ignitor	•	•	•
6	41000S0LC	110V Ignitor on Baseplate	•	•	•
	40857S	Instant Oil Valve 32Z0071TSCV	•	•	•
	41004S	Instant Oil Valve 32Z0078TSCV 3 Way	•	•	•
7	61150KITS	Oil Valve Fitting Kit (44560, 29678, 44461, 29728, 44545)	•	•	•
	74450S	Fuel Unit, 2 Stage, NYC, J4PB-B1000G	•		
	74468S	Fuel Unit, 2 Stage, NYC, J4PB-B1000G		•	
	23556S	Fuel Unit, 2 Stage, B2TA-8851			•
	74476S	Fuel Unit, 2 Stage, NYC, B2TA-8851 100/300PSI			•
	98042S	Fuel Unit, 2 Stage, B2TA-8260			•
8	98127S	Fuel Unit, 2 Stage, NYC, B2TA-8260	•	•	
	98126S	Fuel Unit, 2 Stage, NYC, B2TA-8260			•
8	75291S	Oil line kit	•	•	•
9	28738S	Coupling 1/2" ID x 7/16" ID x 4 7/8" L, H or J Pump	•	•	•
	28761S	Coupling 1/2" ID x 5/16" ID x 6 11/32" L, B Pump	•	•	•
	98856S	Coupling 1/2" ID x 5/16" ID x 6 13/16" L, B Pump			•

ITEM	PART NO.	DESCRIPTION	601CRD	701CRD	702CRD
10	56416S	10" Nominal 20-3/4" OAL Combustion Head Assy	•		
	56440S	12" Nominal 22-3/4" OAL Combustion Head Assy	•		
	56473S	14" Nominal 24-3/4" OAL Combustion Head Assy	•		
	57349S	10" Nominal 20-3/4" OAL Combustion Head Assy		•	
	57539S	12" Nominal 22-3/4" OAL Combustion Head Assy		•	
	57596S	14" Nominal 25-3/4" OAL Combustion Head Assy		•	
11	57737S	10" Nominal 20-3/4" OAL Combustion Head Assy	•		
	98857S	Blower Wheel Only, 6-1/2" OD x 3-3/4" W, 1/2" Bore	•	•	•
12A	98857KITS	Blower Wheel, Coupling, Augmentor, 6-1/2" OD x 3-3/4" W, 1/2" Bore			•
	23259S	4" Universal Flange & Gasket	•	•	•
	23184S	4" Pressure Flange & Gasket	•	•	•
13	59444UVS	4" Pressure Flange & Gasket – Ultra Violet (not shown)	•	•	•
	23382S	Pedestal w/ hardware	•	•	•
14	14407S0ES	CAD Cell Kit	•	•	•
	56580S	Retention Ring Assy 601CRD	•		
15	56697S	Retention Ring Assy 701CRD		•	
	56747S	Retention Ring Assy 702CRD			•
	70200S	Universal Primary w/ Display 70200	•	•	•
16	4020002S	Model 40200 Primary 30/15/30	•	•	•
	5020002S	Model 50200 Primary 30/15/30	•	•	•
	6020002S	Model 60200 Primary 15/15/15	•	•	•
17	35808S	Damper Motor – M436A		•	•
18	22871S	Damper Motor Linkage Kit		•	•
	47407S	Air Shutter Assembly		•	
19	48108S	Air Shutter Assembly		•	
	6702KITS	Hardware Kit (54916, 29694, 47167, 29892, 29728)	•	•	•
20	59881S	Electrode Bracket	•	•	•
	35741S	4 Second Time Delay	•	•	•



54 **801, 1050 & 1150 Oil Burners**

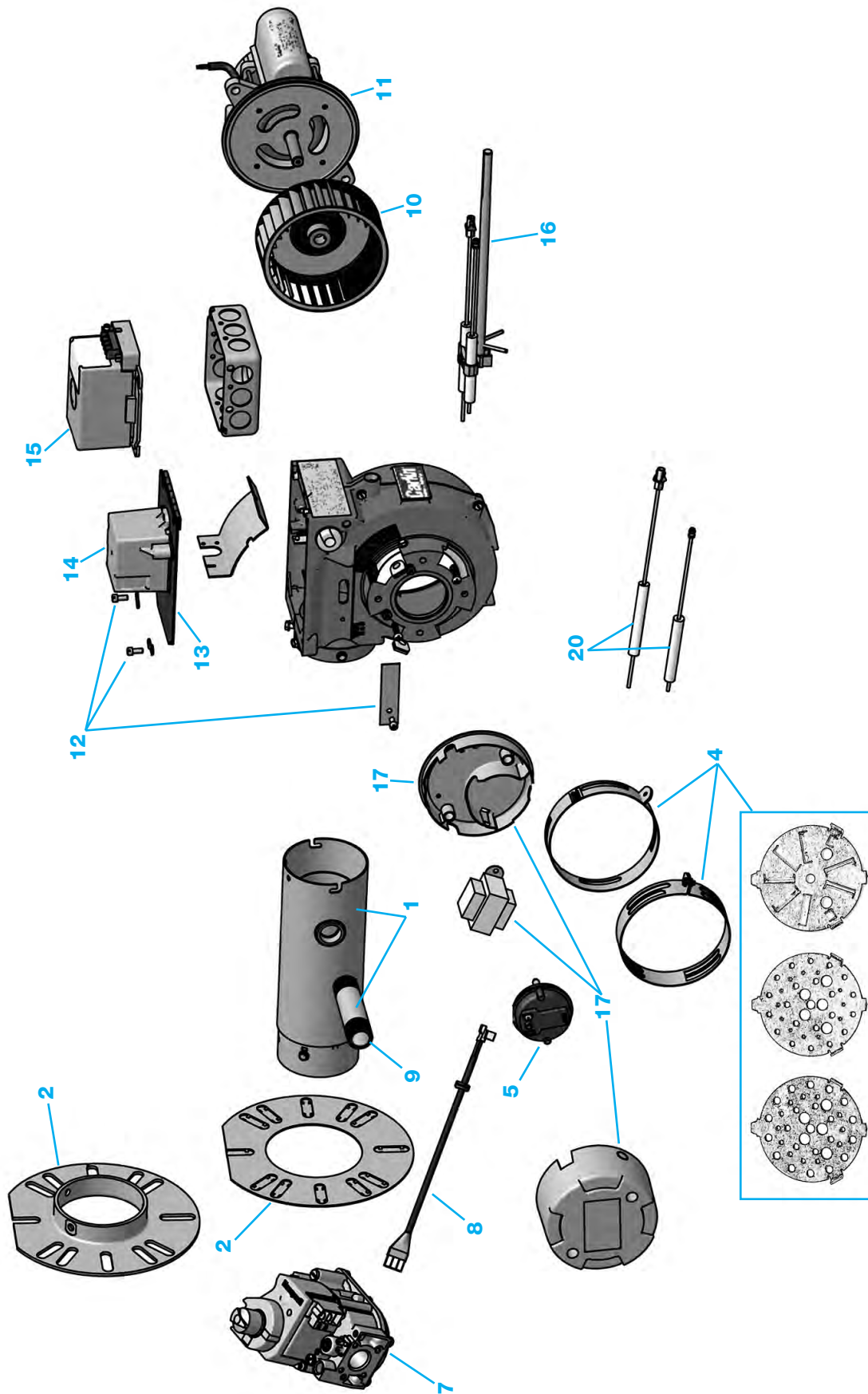
Note: Parts may not be exactly as shown in diagram.

*4 includes selected air tube and combustion head assembly
†6 includes multiple parts **22 includes multiple parts

ITEM	PART NO.	DESCRIPTION	801CRD	1050FFD	1150FFD
1	27730S	Motor: 3/4HP 115/208-230V 60HZ, 1 Phase, 3450 RPM	•		
	27746S	Motor: 3/4HP 115/208-230V 60HZ, 3 Phase, 3450 RPM	•		
	27516S	Motor: 1HP 115/208-230V 60HZ, 1 Phase, 3450 RPM	•	•	
	27532S	Motor: 1 HP 115/208-230V 60HZ, 3 Phase, 3450 RPM	•	•	
	27557S	Motor: 1-1/2HP 115/208-230V 60HZ, 1 Phase, 3450 RPM	•	•	
	27565S	Motor: 1-1/2HP 115/208-230V 60HZ, 3 Phase, 3450 RPM	•	•	
2	98507S	Electrode Set of 2, Approx. 9-1/4" OAL	•	•	•
3	56069S	Ignition Wire: 9-1/4" OAL, for Nominal 10" Air Tube (2 req'd)	•		
	56127S	Ignition Wire: 10-1/8" OAL for Nominal 12" Air Tube (2 req'd)	•		
	56135S	Ignition Wire: 11-5/8" OAL, for Nominal 15" Air Tube (2 req'd)	•		
	55772S	Ignition Wire: 12-1/4" OAL (2 req'd)	•	•	•
4	22756S	801CRD 10" Standard Air Tube/Combustion Head Assy	•		
	22780S	801CRD 12" Standard Air Tube/Combustion Head Assy	•		
	22814S	801CRD 15" Standard Air Tube/Combustion Head Assy	•		
	45328KIT	18-1/2" OAL Air Tube/Combustion Head Assy & Flame Funnel Assy		•	
	45344KIT	18-1/2" OAL Air Tube/Combustion Head Assy & Flame Funnel Assy used with UV and Infra-red scanners		•	
	45393KIT	15-3/8" OAL Air Tube/Combustion Head Assy & Flame Funnel Assy	•		
5	45443KIT	15-3/8" OAL Air Tube/Combustion Head Assy & Flame Funnel Assy used with UV and Infra-red scanners			•
	41000S	110V Ignitor	•	•	•
6	41000S0LC	110V Ignitor on Baseplate	•	•	•
	41004S	Instant Oil Valve 3Z20078TSCV 3 Way	•		
	40600S	Instant Oil Valve 3Z20027TSCV 3 Way (2 required)	•		
	61150KITS	Oil Valve Fitting Kit(44560, 29678, 44461 (.047), 44545, 29694)	•	•	•
7	98042S	Fuel Unit, 2 Stage, B27A-8260	•		
	98126S	Fuel Unit, 2 Stage, B27A-8260, NYC	•		
	23507S	Fuel Unit, 2 Stage, J4PB-B1000G	•	•	•
	74484S	Fuel Unit, 2 Stage, NYC, J4PB-B1000G	•		
	74492S	Fuel Unit, 2 Stage, NYC, J4PB-B1000G	•	•	•
8	34785KITS	Oil line kit (incl. all oil lines)	•	•	•
	98229S	Coupling: 1/2" ID x 5/16" ID x 6-1/2" L, B Pump	•		
9	28779S	Coupling: 1/2" ID x 7/16" ID x 5-13/16" L, H or J Pump	•		
	58032S	10" Nominal 22-1/4" OAL Combustion Head Assy	•		
10	58081S	12" Nominal 24-1/4" OAL Combustion Head Assy	•		
	58123S	15" Nominal 27-1/4" OAL Combustion Head Assy	•		
	51961S	Standard 27-1/2" OAL Combustion Head Assy		•	
	52019S	Standard 27-1/2" OAL Combustion Head Assy		•	
11	28546S	Blower Wheel/Fan: 7" OD x 5 W, 5/8" Bore	•	•	•
	28556S	Blower Wheel/Fan: 7-5/8" OD x 5" W, 5/8" Bore	•	•	•

Parts List

ITEM	PART NO.	DESCRIPTION	801CRD	1050FFD	1150FFD
12	23283S	5" Universal Flange & Gasket	•		
	23218S	5" Pressure Flange & Gasket	•	•	
	59576S	5" Pressure Flange & Gasket – For use with Ultra Violet Control	•		
	59550S	Flange/Gasket for use with Ultra Violet Control		•	
	59592S	Flange/Gasket for Forced Draft		•	
	59618S	Flange/Gasket for use with Ultra Violet Control		•	•
13	23382S	Pedestal w/ hardware	•	•	•
14	14407S0ES	CAD Cell Kit	•		
	56812S	Retention Ring Assy 801CRD	•		
15	55210S	Retention Ring Assy 1050FFD		•	
	55269S	Retention Ring Assy 1150FFD		•	•
	70200S	Universal Primary W/ Display 70200*	•		
16	4020002S	Model 40200 Primary 30/15/30*	•	•	•
	5020002S	Model 50200 Primary 30/15/30*	•	•	•
	6020002S	Model 60200 Primary 15/15/15*	•	•	•
	99822S	EMX43UV – Control Set Honeywell RM7840L	•	•	•
	99822CS	EMX43UVSC – Control Set Honeywell RM7840L	•	•	•
*Cannot use on burners firing 20GPH or greater					
17	35808S	Damper Motor – M436A	•	•	•
18	35824S	Motor Contactor 20 AMP R4242B1005	•		
	35840S	Motor Contactor 30 AMP R4243B1004	•		
19	22889S	Damper Motor Linkage Kit	•	•	•
	48504S	Air Shutter Assembly**	•	•	•
**Includes 4840SS & 5025S and all components to adjust air					
21	35881S	Air Flow Switch Kit		•	•
22	81150KITS	Hardware Kit (Includes 54916, 47167, 29728, 29892)	•	•	•
	97203S	Auxiliary Switch 0607B-1067		•	•
24	61820S	Spacer 4" Long		•	
	61838S	Spacer 5" Long		•	
	61846S	Spacer 6" Long		•	
	61853S	Spacer 7" Long		•	
	61861S	Spacer 8" Long		•	
	61879S	Spacer 4" Long		•	•
	61887S	Spacer 5" Long		•	•
	61895S	Spacer 6" Long		•	•
25	61903S	Spacer 7" Long		•	•
	61911S	Spacer 8" Long		•	•
25	46771S	Motor Mounting Ring	•	•	•
26	59881S	Electrode bracket with screws	•	•	•
27	33910S	Toggle Switch (Not shown)	•	•	•
28	34207S	Shaft Extension only		•	•



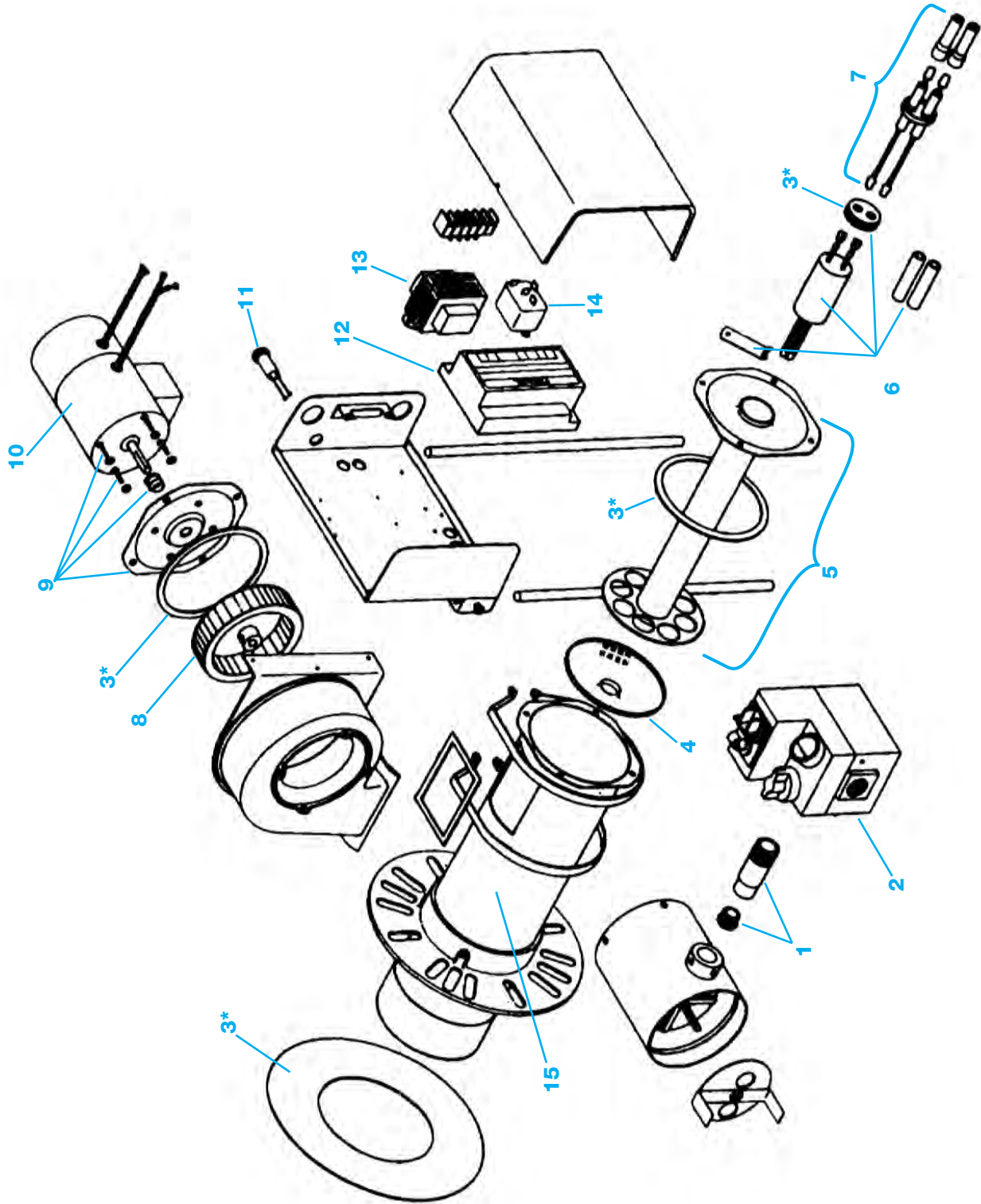
56 EZGas Pro Burners

Note: Parts may not be exactly as shown in diagram.

ITEM	PART NO.	DESCRIPTION
1	99392AKITS	10" Air Tube Kit, A Diffuser w/ Field Drilled Orifice
	99392BKITS	10" Air Tube Kit, B Diffuser w/ Field Drilled Orifice
	99392CKITS	10" Air Tube Kit, 9-Slot Diffuser w/ Field Drilled Orifice
	99392DKITS	12" Air Tube Kit, A Diffuser w/ Field Drilled Orifice
	99392EKITS	12" Air Tube Kit, B Diffuser w/ Field Drilled Orifice
	99392FKITS	12" Air Tube Kit, 9-Slot Diffuser w/ Field Drilled Orifice
	99392GKITS	14" Air Tube Kit, A Diffuser w/ Field Drilled Orifice
	99392HKITS	14" Air Tube Kit, B Diffuser w/ Field Drilled Orifice
	99392NKITS	14" Air Tube Kit, 9-Slot Diffuser w/ Field Drilled Orifice
	99392SKITS	16" Air Tube Kit, A Diffuser w/ Field Drilled Orifice
2	50833AS	Flange/Gasket Kit
	50821AS	Flange Gasket Single Piece
3	50821S	Flange Gasket 10 pack
	GSKTKIT1	EZ Gasket Seal Kit
4	50808KITS	Full Firing Rate Kit – A, B & 9S Diffuser + 2 Airbands
5	98522S	Air Flow Switch 120 Volt
	50806S	Air Flow Switch 24 Volt
6	98554S	Blower sensing lines kit – Only used on EZGAS 120V version (not shown)
7	50824S	Gas valve 24 volt
	98523S	Gas valve 120 volt
8	50819AS	Gas valve power harness (EZGas Pro only)
9	9938440XX	Field drilled orifice

ITEM	PART NO.	DESCRIPTION
10	77933S	Blower wheel, 5-1/16" OD x 2" W, 1/2" BORE
11	98629S	Motor PSC 1/15HP
	98022S	Motor PSC 1/6HP (Can be used on gas same as oil)
12	98282AS	Hardware kit for EZGAS/EZGAS PRO
13	98498S	Hinged cover plate for Ignitor
14	4180002S1	Ignitor for EZGAS & EZGAS PRO
15	602002FR363S	Primary Control Microprocessor Flame Rod
16	98572AS	Ignitor electrode/flame rod assembly 10"
	98572BS	Ignitor electrode/flame rod assembly 12"
	98572CS	Ignitor electrode/flame rod assembly 14"
	98572DS	Ignitor electrode/flame rod assembly 16"
	98572ES	Ignitor electrode/flame rod assembly 18"
17	50822S	Transformer EZGAS PRO
18	GPROTOTES	EZGAS PRO Burner Service kit Tote for PRO burners (not shown)
	EZGASTOTES	EZGAS Burner Service kit Tote for 120V burners (not shown)
19	99017S	Test Kit – Includes FR Test Jack & Spark Tester (not shown)
20	50873AS	Electrode/ Flame Rod for 10" EZGAS OAL=11¼"
	50873BS	Electrode/ Flame Rod for 12" EZGAS OAL=12¼"
	50873CS	Electrode/ Flame Rod for 14" EZGAS OAL=14¼"
	50873DS	Electrode/ Flame Rod for 16" EZGAS
21	50873ES	Electrode/ Flame Rod for 18" EZGAS
	EZGFRWIRES	EZGas Flame Rod Wire (not shown)

NOTE: EZGas Service Kit Totes – see page 74



Note: Parts may not be exactly as shown in diagram.

ITEM	PART NO.	DESCRIPTION
1	61663S	Orifice Kit (Includes 60582 and 61663)
2	41053S	Gas Valve 24 Volt
3	40360S	Gasket kit (Includes 40287, 40360 & 2-40402)
4	57117S	Flameholder
5	97875S	Ignition Tube Assembly with Gasket 6"
	97876S	Ignition Tube Assembly with Gasket 9"
	97877S	Ignition Tube Assembly with Gasket 12"
If entire tube needs replacing, entire burner must be replaced.		
6	87197S	Hot Surface Ignitor Assembly
7	46631S	Rear Ignitor assembly with boots 6"
	46656S	Rear Ignitor assembly with boots 9"
	46615S	Rear Ignitor assembly with boots 12"

Parts List

ITEM	PART NO.	DESCRIPTION
8	28613S	Blower Wheel, 4" OD x 1" W, 5/16" BORE
9	51060S	Motor Mounting Ring with bushing
10	27789S	Burner Motor 1/50HP
11	33936S	Indicator Light
12	99564KITS	Control Honeywell S89C
13	24315S	Transformer 40 VA rating 115-volt Primary
14	35782S	Motor Relay – 24V coil, SPST
15	If this item needs to be replaced the entire burner needs to be replaced.	

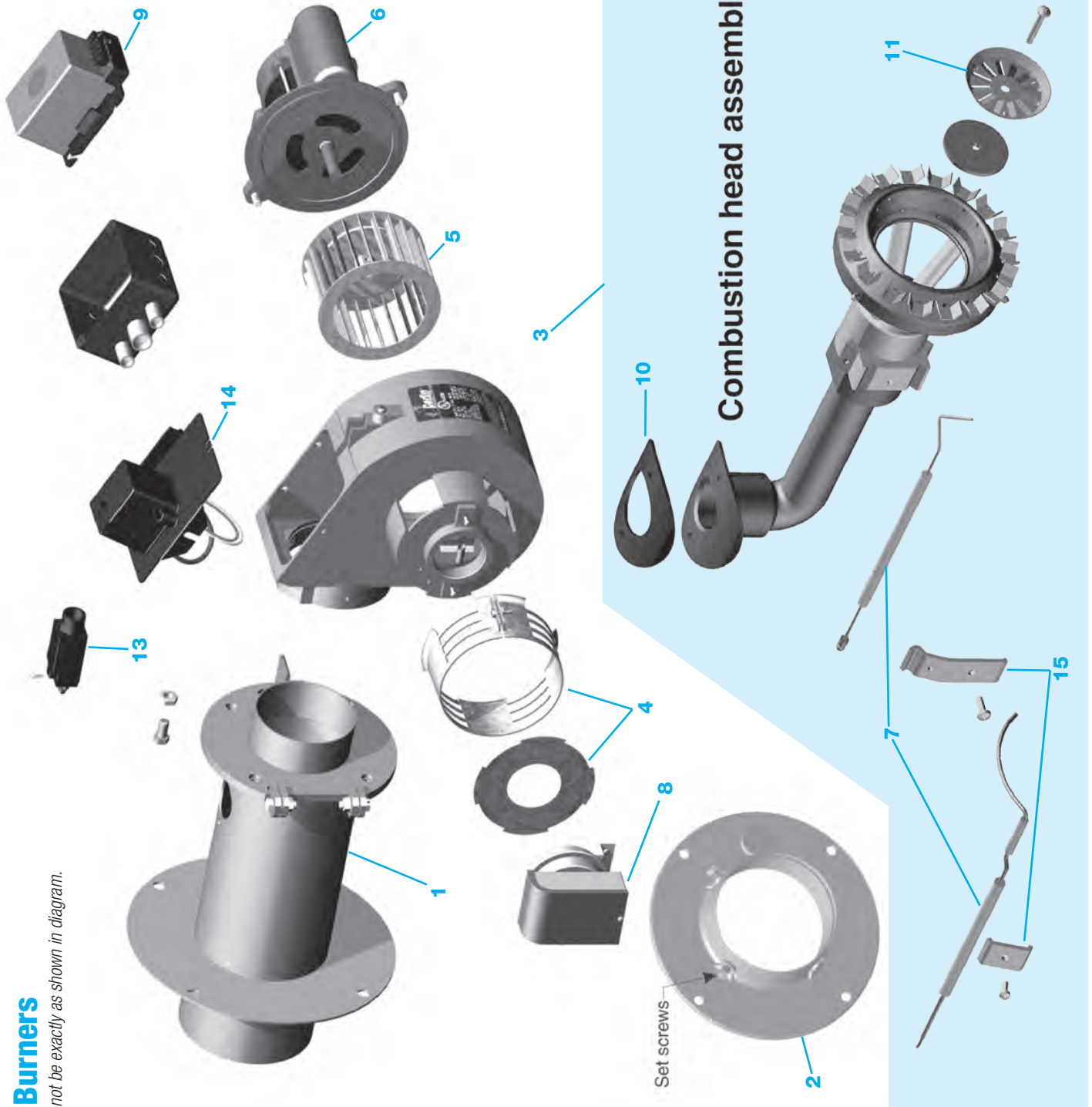
ITEM	PART NO.	DESCRIPTION
1	98514AAKITS	8" Air Tube w/ A Diffuser & Gas Can
	98514ABKITS	8" Air Tube w/ B Diffuser & Gas Can
	98514BAKITS	10" Air Tube w/ A Diffuser & Gas Can
	98514BBKITS	10" Air Tube w/ B Diffuser & Gas Can
	98514CAKITS	12" Air Tube w/ A Diffuser & Gas Can
	98514CBKITS	12" Air Tube w/ B Diffuser & Gas Can
	98514DAKITS	14" Air Tube w/ A Diffuser & Gas Can
	98514DBKITS	14" Air Tube w/ B Diffuser & Gas Can
	98514EAKITS	16" Air Tube w/ A Diffuser & Gas Can
98514EBKITS	16" Air Tube w/ B Diffuser & Gas Can	
2	59642BLUS	Flange/Gasket kit for 201GAS
3	40287S	Gasket for Flange only
4	98542S	Air Band 2 Slot for 201 Gas and 202 Gas
	47001S	Air Band 4 Slot for 201 Gas, 202 Gas
5	98521KITS	Airflow switch and mounting plate assembly for 201 Gas
6	98557S	Blower sensing line kit inlet and outlet
7	985523S	Gas valve VR4305M-4540 for EZGAS and 201 Gas
8	9938440XX	Field drilled orifice for EZGASPRO, EZGAS & 201GAS
9	28563S	Blower wheel (used on 201/301 Oil and Gas), 5-3/4" OD x 4" W, 1/2" BORE

ITEM	PART NO.	DESCRIPTION
10	98611S	Motor 1/6HP 120V 60Hz, 48N Frame
	98630S	Motor 1/4HP 120V 60Hz, 48N Frame (used on oil 201/301)
11	98534S	Hinged cover plate for Ignitor
12	4180002S2	Ignitor for 201GAS
13	6020002FR363S	Primary Control Microprocessor Flame Rod
14	98433AS	Ignitor electrode/flame rod 8"
	98433BS	Ignitor electrode/flame rod 10"
	98433CS	Ignitor electrode/flame rod 12"
	98433DS	Ignitor electrode/flame rod 14"
	98433ES	Ignitor electrode/flame rod 16"
15	98540AS	Ignitor electrode/flame rod assembly 8"
	98540BS	Ignitor electrode/flame rod assembly 10"
	98540CS	Ignitor electrode/flame rod assembly 12"
	98540DS	Ignitor electrode/flame rod assembly 14"
	98540ES	Ignitor electrode/flame rod assembly 16"
16	59444BLUS	Optional forced draft flange
17	20GFRWIRES	201GAS Flame Rod Wire (not shown)

Parts List

REPLACEMENT PARTS
62 301 Gas Burners

Note: Parts may not be exactly as shown in diagram.



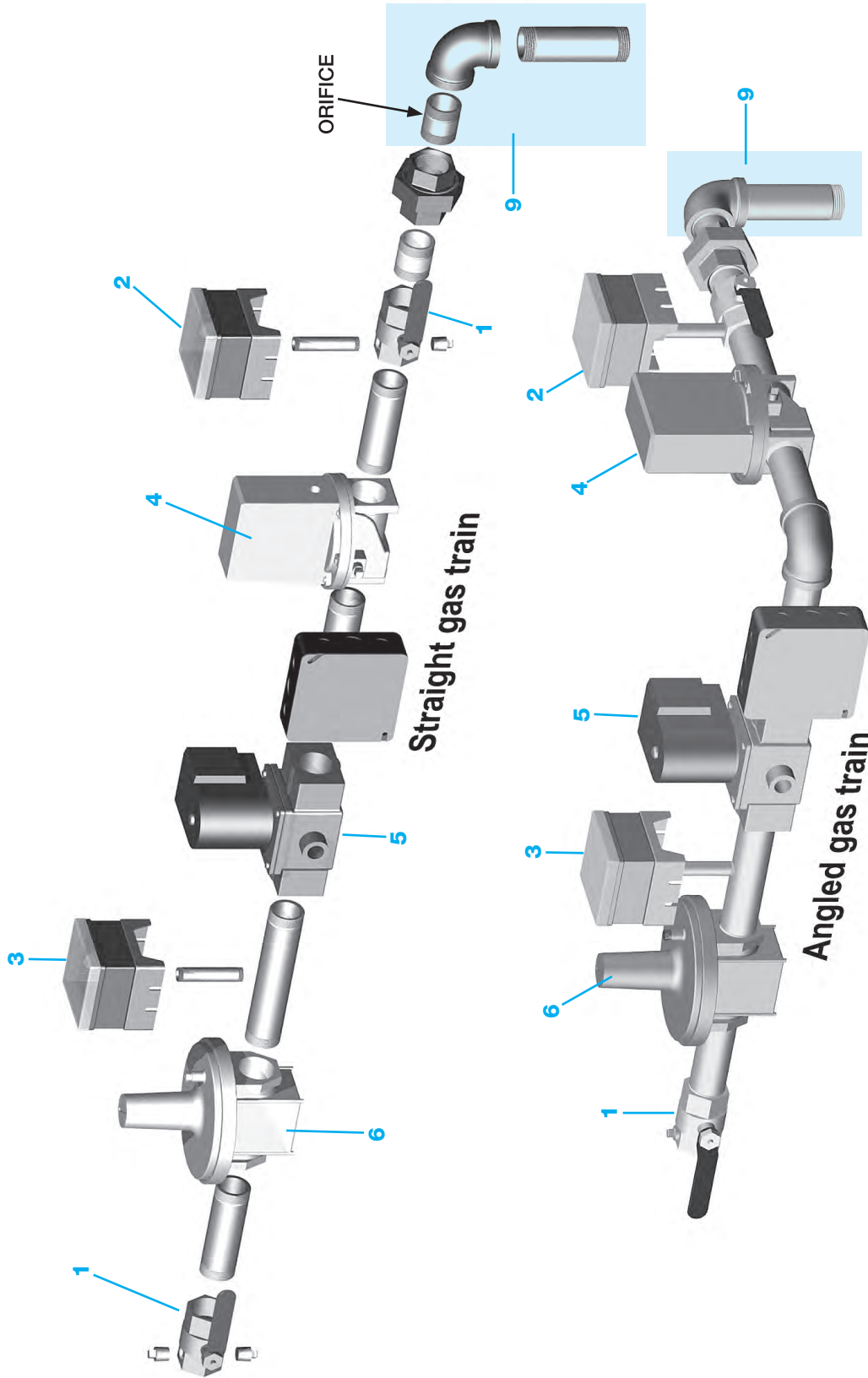
ITEM	PART NO.	DESCRIPTION
1	99259S	301/601 Gas Airtube 14" B, 1" inlet for rates 401,000 to 700,000 BTU's.
	99189S	301/601 Gas Airtube 14" C, 1" inlet for rates 550,000 to 1,100,000 BTU's.
2	99255KITS	Flange/Gasket kit for 301GAS/601GAS
3	99164S	Combustion Head Assembly "B" Head
	99277S	Combustion Head Assembly "C" Head
4	99254S	Airband/Air Shutter Kit
5	28563S	Blower wheel/ fan, 5-3/4" OD x 4" W, 1/2" BORE
6	98611S	Motor 1/6HP, 120V, 60HZ, 48N Frame
7	99158S	Ignition Electrode/Flame Rod 301GAS

ITEM	PART NO.	DESCRIPTION
8	98521KITS	Airflow switch and mounting plate assembly for 201/301/601GAS
9	60200FR943S	Primary Control Microprocessor Flame Rod
10	99260S	Gasket Kit (includes 40253, 99260, 99430)
11	99162S	Retention Ring Assy
12	30GFRWIRES	Flame Rod Wire 24" for 301/601Gas (not shown)
13	99261KITS	Door Interlock Switch and Mounting Screws
14	4180002S	Ignitor for 301GAS
15	99153KITS	Electrode/Flame Rod Bracket assembly

Parts List

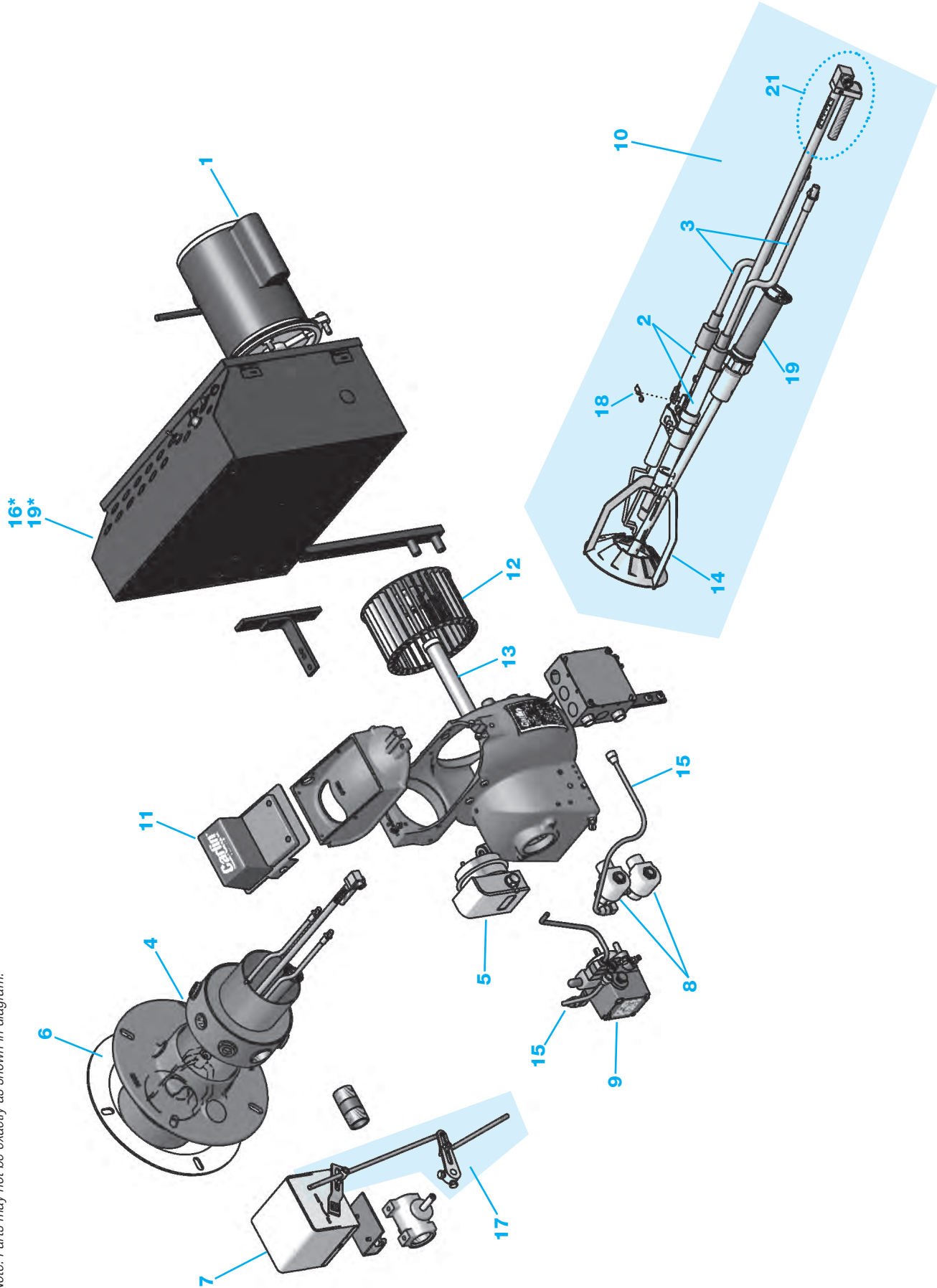
ITEM	PART NO.	DESCRIPTION
1	99259S	301/601 Gas Airtube 14" B, 1" inlet for rates 401,000 to 700,000 BTU'S.
	99189S	301/601 Gas Airtube 14" C, 1" inlet for rates 550,000 to 1,100,000 BTU'S.
	99507S	601 Gas Airtube 14" D, 1-1/4" INLET, 900,000 TO 1,500,000 BTU'S
2	99255KITS	Flange/Gasket kit for 301 GAS/601 GAS
3	99294S	11" Combustion Head Assembly
	99535S	12" Combustion Head Assembly
	99295S	21" Combustion Head Assembly
	99536S	22" Combustion Head Assembly
	99532S	31" Combustion Head Assembly
	99516S	32" Combustion Head Assembly
4	47407S	Air Shutter Kit
5	98857S	Blower wheel/fan, 6-1/2" OD x 3-3/4" W, 1/2" BORE
6	27706S	Motor 1/2HP 115/230V 60Hz, 1PH

ITEM	PART NO.	DESCRIPTION
7	99292S	Ignition Electrode/Flame Rod 601 GAS (Includes 99292, 99293, 99161)
8	98521KITS	Airflow switch and mounting plate assembly for 201/301/601 GAS
9	60200FR943S	Primary Control Microprocessor Flame Rod
10	99260S	Gasket Kit (Includes 40253, 99260, 99430)
11	99162S	Retention Ring Assy
12	30GFRWIRES	Flame Rod Wire 24" for 301/601 Gas (not shown)
	99477S	Ignition Wire 14-1/2" (not shown)
13	99261KITS	Door Interlock Switch and Mounting Screws
14	41000SOLC	Ignitor for 601 Gas w/Baseplate
15	99153KITS	Electrode/Flame Rod Bracket assembly (Includes 99153 & 99155)



ITEM	PART NO.	DESCRIPTION	301 GAS	601 GAS
5	99229S	Secondary Gas Valve Honeywell V4295A 1031 - 1" NPT	•	•
	99435S	Secondary Gas Valve Honeywell V4295A 1049 - 1-1/4" NPT	•	•
	99435AS	Secondary Gas Valve Honeywell V4295A 1056 - 1-1/2" NPT	•	•
	99435BS	Secondary Gas Valve Honeywell V4295A 1064 - 2" NPT	•	•
6	99233S	Gas Pressure Regulator 1" NPT Maxitrol RV-61	•	•
	99432S	Gas Pressure Regulator 1-1/4" NPT Maxitrol RV-81	•	•
	99432AS	Gas Pressure Regulator 1-1/2" NPT Maxitrol RV-81	•	•
	99432BS	Gas Pressure Regulator 2" NPT Maxitrol RV-91	•	•
7	99957S	Time Delay relay 8-second (Mounted to gas train junction box)	•	•
8	99415S	Spring Kit (Includes 99759 & 99415)	•	•
9	9925020XX	Gas Orifice pilot hole for field drill 7/32" - 1" NPT	•	•
	9947620XX	Gas Orifice pilot hole for field drill 9/32" - 1-1/4" NPT	•	•
	99250KIT1S	Orifice 7/32 & 3" Elbow kit	•	•
	99476KIT1S	Orifice 9/32 & 3" Elbow Kit	•	•

ITEM	PART NO.	DESCRIPTION	301 GAS	601 GAS
1	99225S	Manual Gas Shutoff 1" NPT	•	•
	99245S	Manual Gas Shutoff 1-1/4" NPT	•	•
	99246S	Manual Gas Shutoff 1-1/2" NPT	•	•
	99926S	Manual Gas Shutoff 2" NPT	•	•
2	99235S	High gas pressure switch	•	•
3	99234S	Low Gas pressure switch	•	•
	99227S	Primary Gas Valve, Honeywell 48A 2169 1" NPT w/ bleed restrictor	•	•
	99434S	Primary Gas Valve, Honeywell 48A 2177 1-1/4" NPT w/ bleed restrictor	•	•
	99343AS	Primary Gas Valve, Honeywell V48A 2185 1-1/2" NPT w/ bleed restrictor	•	•
	99434BS	Primary Gas Valve, Honeywell 48A 2243 2" NPT w/ bleed restrictor	•	•
4	99796AS	Primary Gas Valve Honeywell V4944N-1011 1" NPT MASS CODE Natural Gas	•	•
	99796BS	Primary Gas Valve Honeywell V4944N-1029 1-1/4" NPT MASS CODE Natural Gas	•	•
	99796ES	Primary Gas Valve Honeywell V4944N-1037 1-1/2" NPT MASS CODE Natural Gas	•	•
	99796FS	Primary Gas Valve Honeywell V4944N-1045 2" NPT MASS CODE Natural Gas	•	•
	99796CS	Primary Gas Valve Honeywell V4944L-1016 1" NPT MASS CODE Propane Gas	•	•
	99796DS	Primary Gas Valve Honeywell V4944L-1024 1-1/4" NPT MASS CODE Propane Gas	•	•



68 702G & 702G/O Burners

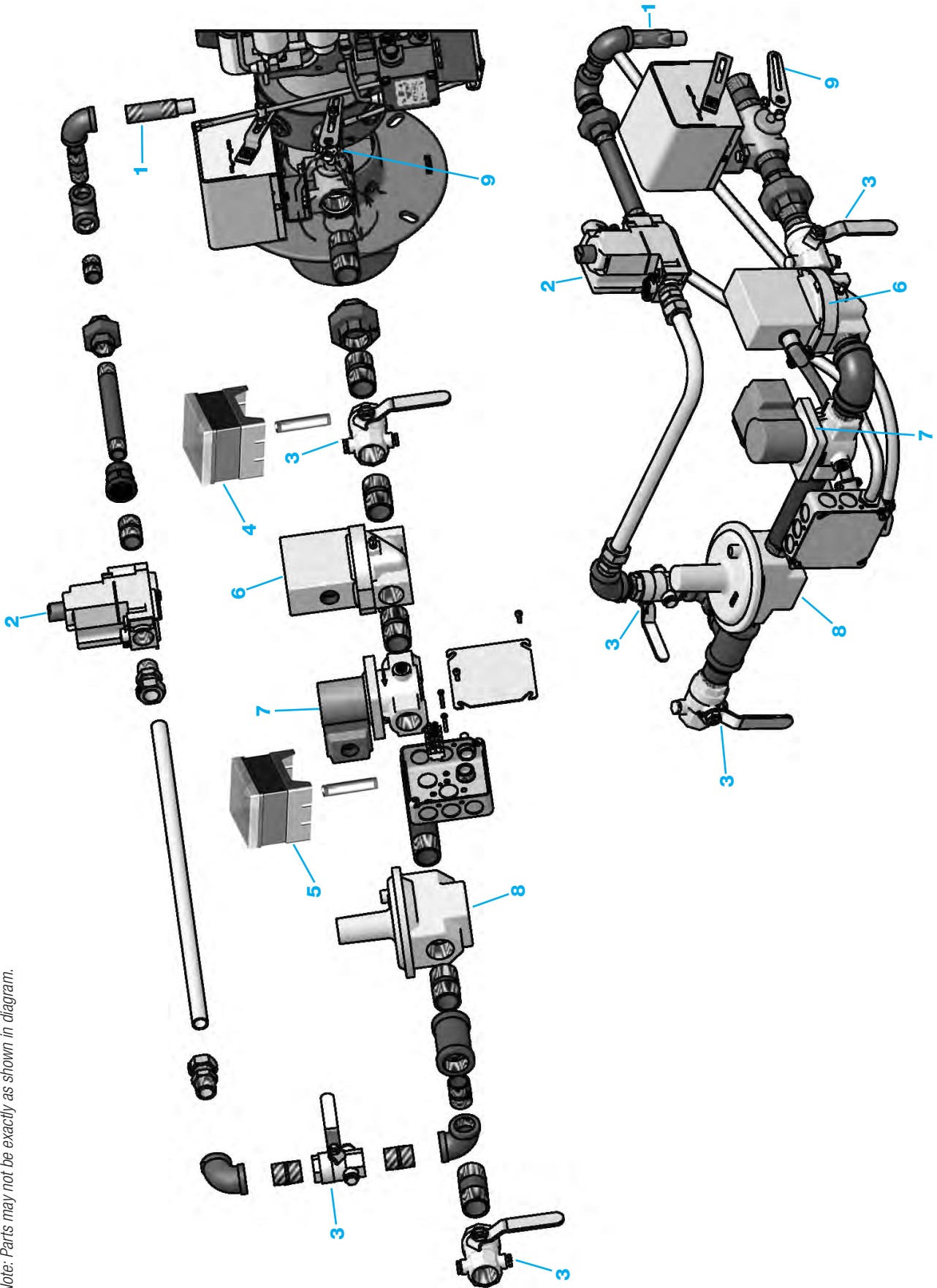
Note: Parts may not be exactly as shown in diagram.

ITEM	PART NO.	DESCRIPTION	702Gas	702G/O
1	27706S	Motor: 1/2 hp, 115/230V, 60HZ, 1 Phase, 3450 rpm	•	•
2	98507S	Electrode Set of 2, Approx. 9-1/4" OAL	•	•
3	55772S	Ignition wire – One wire in Service Pack (2 Req'd)	•	•
4	99541S	14" Tube with pressurized flange 1" main gas inlet; 1/2" pilot inlet	•	•
5	98522S	Air Flow Switch 120 Volt	•	•
6	40246S	Gasket	•	•
7	35808S	Damper Motor – M436A	•	•
8	40857S	Instant Oil Valve 32Z0071TSCV	•	•
	41004S	Instant Oil Valve 32Z0078TSCV 3 Way	•	•
	61150KITS	Oil Valve Kit (44560, 29678, 44461, 29728, 44545)	•	•
9	23556S	Suntec, 2 Stage, B2TA-8851	•	•
	74476S	Suntec, 2 Stage, NYC, B2TA-8851 100/300PSI	•	•
10	57810S	14" Combustion Head Assembly (includes thermal fuse and electrode wire)	•	•
11	41000S	Ignitor	•	•
	41000SOLC	Ignitor on Baseplate	•	•
12	98857KITS	Blower Wheel, Coupling, Augmentor, 6-1/2" OD x 3-3/4" W, 1/2" Bore	•	•

ITEM	PART NO.	DESCRIPTION	702Gas	702G/O
13	98856S	Coupling 1/2" ID x 5/16" ID x 6-13/16" L, B Pump	•	•
14	56747S	Retention Ring Assy 702CRD	•	•
15	75291S	Oil line kit (75358S, 75291S)	•	•
16	35824S	Motor Contactor 20 AMP R4242B1005 (not shown)	•	•
17	22889S	Damper Motor Linkage Kit	•	•
18	34215S	Thermal fuse	•	•
19	35311S	C7027A1023 UV Scanner	•	•
	97656S	Q7800B1003 Sub Base	•	•
	99766S	RM7897C1000 Programming Control	•	•
	97662S	R7849A1023 Amplifier	•	•
	97716S	ST7800A1054 Timing Card	•	•
	EMX15UVS	EMX15UV KIT includes all of the above	•	•
20	23382REDS	Pedestal (not shown)	•	•
	23382BLU1S	Pedestal (not shown)	•	•
21	6702KITS	Hardware Kit (Yoke 54916, C/H adj screw 47167, oil line elbow 29694)	•	•

70 702G & 702G/O Train

Note: Parts may not be exactly as shown in diagram.



ITEM	PART NO.	DESCRIPTION	702Gas	702G/O
1	73007S	Orifice nipple assembly Natural Gas	•	•
	73007AS	Orifice nipple assembly Propane Gas	•	•
2	98523S	Pilot Gas valve 120 volt	•	•
3	99455S	Manual Gas Shutoff 3/4" NPT	•	•
	99225S	Manual Gas Shutoff 1" NPT	•	•
	99245S	Manual Gas Shutoff 1-1/4" NPT	•	•
	99246S	Manual Gas Shutoff 1-1/2" NPT	•	•
	99926S	Manual Gas Shutoff 2" NPT	•	•
4	99235S	High gas pressure switch	•	•
5	99234S	Low Gas pressure switch	•	•
6	99227S	Primary Gas Valve, Honeywell 48A 2169 1" NPT w/ bleed restrictor	•	•
	99434S	Primary Gas Valve, Honeywell 48A 2177 1-1/4" NPT w/ bleed restrictor	•	•
	99434AS	Primary Gas Valve, Honeywell V48A 2185 1-1/2" NPT w/ bleed restrictor	•	•
	99434BS	Primary Gas Valve, Honeywell 48A 2243 2" NPT w/ bleed restrictor		

ITEM	PART NO.	DESCRIPTION	702Gas	702G/O
7	99229S	Secondary Gas Valve Honeywell V4295A 1031 – 1" NPT	•	•
	99435S	Secondary Gas Valve Honeywell V4295A 1049 – 1-1/4" NPT	•	•
	99435AS	Secondary Gas Valve Honeywell V4295A 1056 – 1-1/2" NPT	•	•
	99435BS	Secondary Gas Valve Honeywell V4295A 1064 – 2" NPT	•	•
8	99233S	Gas Pressure Regulator 1" NPT Maxitrol RV-61	•	•
	99432S	Gas Pressure Regulator 1-1/4" NPT Maxitrol RV-81	•	•
	99432AS	Gas Pressure Regulator 1-1/2" NPT Maxitrol RV-81	•	•
	99432BS	Gas Pressure Regulator 2" NPT Maxitrol RV-91	•	•
9	99533S	Butterfly valve and crank arm – Eclipse 48V-A, 1" NPT	•	•

Part No.	Description
----------	-------------

EZGAS PRO BURNER SERVICE KIT TOTE

Use for EZGAS PRO Burners

GPROTOTES*	EZGas Pro Burner Service Kit Tote
------------	-----------------------------------

*For EZGAS PRO Burners manufactured after 11/2013

INCLUDES

1. EZGAS Pro Burner Instruction Manual
2. 13" Flame Rod WireEZGFRWIREs
3. Carlin Ignitor4180002S1
4. Carlin 60200FR Control.....6020002FR363S
5. 10" Electrode/Flame Rod50873AS
6. 12" Electrode/Flame Rod50873BS
7. 14" Electrode/Flame Rod50873CS
8. Air Flow Switch 24V50806S
9. Gas Valve 24V50824S
10. Flame Signal Test Jack & Ignitor Spark Tester99017S
11. Orifice Nipple9938440XX
12. Full Firing Rate Kit A,B & 9S Diffuser & Airbands ...50808KITS
13. Transformer 24V50822S



EZGAS BURNER SERVICE KIT TOTE

Use for EZGAS Burners

EZGASTOTES*	EZ-Gas Burner Service Kit Tote
-------------	--------------------------------

*For EZGAS Burners manufactured after 11/2013

INCLUDES

1. EZ-Gas Burner Instruction Manual
2. 13" Flame Rod WireEZGFRWIREs
3. Carlin Ignitor4180002S1
4. Carlin 60200FR Control.....6020002FR363S
5. 10" Electrode/Flame Rod50873AS
6. 12" Electrode/Flame Rod50873BS
7. 14" Electrode/Flame Rod50873CS
8. Air Flow Switch 120V98522S
9. Gas Valve98523S
10. Flame Signal Test Jack & Ignitor Spark Tester99017S
11. Orifice Nipple9938440XX



126 Bailey Road, North Haven, CT 06473

Tel: 203-680-9401 Fax 203-680-9403

www.carlincombustion.com