

hilmar[®]
RETOOL + CONQUER[™]

2015 PRODUCT CATALOG

The work takes you from superheat to freezing cold. And requires you get really comfortable in the dark, dirty and downright cramped. You gotta find a way to keep your cool even when the customer has been without hers for 27 hours. The tools in your truck are the only help you've got. And that's the kicker. Because while the work keeps getting more complex, the tools haven't evolved much at all. UNTIL NOW.

hilmar[®]
RETOOL + CONQUER[™]

Table of Contents

MANIFOLDS

Manifold Family	2-3
4-Valve Aluminum Manifold	4-7
2-Valve Aluminum Manifold	8-9
2-Valve Basic Manifold	10
Replacement Parts	11

ELECTRONIC TOOLS

Dual Readout Thermometer	12
Thermocouple Clamp	13

GAUGES

Gauge Family	14
Analog Gauges	15

HOSES

Hose Family	16
Hoses	17
Hoses with Ball Valve Adapters	18
Ball Valve Adapters	19

BENDING TOOLS

Bender Family	20-21
Compact Bender Kits	22-23
Lever Benders	24
Tri-Tube Benders	25
Spring Benders	25

FLARING TOOLS

Flare Family	26-27
Orbital Flare	28
Basic Flare	29
Large Basic Flare	29
Quick-Engage Flare and Swage Kit	30
Large Flare/Swage	31

SWAGING TOOLS

Swage Family	32-33
Compact Swage Tool	34-35
Punch Swage Set	36
Multi-Swage Punch	37

TUBING CUTTERS

Tubing Cutters Family	38-39
Small Diameter Tubing Cutters	40
Large Diameter Tubing Cutters	41
Plastic Tubing Cutter	42
Ratcheting Plastic Tubing Cutters	43

SHEET METAL & DUCT TOOLS

Sheet Metal & Duct Tools Family	44-45
Aviation Snips	46
Offset Aviation Snips	46
Tinner Snips	47
Aluminum Handle Snip	47
Pipe Duct Cutter	48
V-Notcher	48
Snap Lock Punch	49
Hand Crimpers	49
Hand Seamers	50
Folding Tools	51
Duct Stretcher	51
Hole Cutters	52
Duct Slitting Tool	52
Duct Knife	53
Cable Tie Tensioning Tool	53

DRIVING TOOLS

Driving Tools Family	54-55
Magnetic Nutsetters	56
Magnetic Nut Drivers	57-59
Quick-Change Magnetic Nut Drivers	60-61
Ratcheting 9 in 1 Multi-Tool	62
9 in 1 Multi-Tool	63
Stubby 6 in 1 Multi-Tool	63
Keystone Tip Demolition Screwdrivers	65
Keystone Tip Screwdrivers	66
Cabinet Tip Screwdrivers	66
Terminal Block Screwdriver	67
Phillips Tip Screwdrivers	67
Screwdriver Sets	68
Precision Screwdriver Set	69
Hex Key Sets	70-71

At hilmor, we're revolutionizing the HVAC/R world by creating tools that are a step ahead. Every tool we make is designed to give you all the features you need and none of the ones you don't. We're determined to deliver smart, innovative solutions when and where you need them most. So, you'll be fully equipped to retool and conquer.

PLIERS, WRENCHES & WIRE STRIPPERS

Pliers, Wrenches & Wire Strippers	72-73
Quick-Adjusting Tongue & Groove Pliers	74-75
Tongue & Groove Pliers	76
Slip Joint Pliers	76
Lineman's Pliers	77
Long Nose Pliers	77
Diagonal Cutting Pliers	78
Crimping Tool	78
Adjustable Wrenches	79
Wire Strippers	80
Self-Adjusting Wire Stripper	81

UTILITY KNIVES

Utility Knives and Blades Family	82-83
Retractable Utility Knife	84
Folding Utility Knife	85

SERVICE TOOLS

Service Tools Family	86
Service Wrenches	87
Inspection Mirror	88
Deburring Tools	88
Fin Straightening Tool	89
Tube Prep Brushes	89

WORKSITE STORAGE

Worksite Storage Family	90
HVAC/R Tote	91
Backpack Tool Bag	92
Tool Center Bag	93
HVAC/R Refrigerant Tank & Utility Backpack	94
HVAC/R Carrying Strap	95
Zipper Pouch	96
Manifold Cover	96
HVAC/R General Purpose Gloves	97
HVAC/R Sheet Metal Gloves	97

KITS

HVAC/R Starter Kit	98-99
--------------------	-------

WARRANTY/PRESSURE TEMPERATURE CHART

Warranty	100
Pressure Temperature Chart	101

BUILT TO HANDLE ANY CLIMATE THROWN THEIR WAY.



Manifolds operate as your sidekicks on every job. They need to be durable. They need to not leak. They need to excel in even the most extreme conditions. The Hilmor line of Manifolds is ready to be put to work with replaceable stainless steel valve seats and SAE-style O-rings. The list of features goes on and on, but the one that matters most is their ability to withstand all the pressures you encounter — day in and day out.



4-VALVE ALUMINUM MANIFOLD

We know that manifolds are your lifeline. So, when we decided to retool the features and design, we were meticulous down to the last detail.



Extra Confidence

Built to last with a forged aluminum body. Designed to be leak-resistant with replaceable stainless steel valve seats, SAE-style O-rings and a securely seated, large sight glass.



Quick On The Job

Get faster vacuum pulls with a true 3/8" bore throughout the valve.



Comfortable Grip

A rubberized handle makes it easier to use in wet and dirty environments.



Glows in the Dark

Light-activated paint illuminates, so you won't be left in the dark.



Pressure Indicator Ring

A pressure reminder allows you to set the pressure ring and reference it later.



Rubberized handles are optimally sized for quick and painless turns.



Front-mounted hose positions give you easier access.



4-Valve Aluminum Manifold
1839120

4-VALVE ALUMINUM MANIFOLD

Product Specifications

Item Numbers/Product Descriptions					
Refrigerants	With 60" Hoses and Ball Valve Adapters	Without Hoses	Temp.	Pressure Range Low	Pressure Range High
R410A	1839109 4V410H	1839111 4V410	F/C	-30" HG/300/ 500 psi	0/800 psi
R12-22-502A	1839115 4V1222502H	1839117 4V1222502	F	-30" HG/120/ 350 psi	0/500 psi
R12-22-134A	1839120 4V1222134H	1839121 4V1222134	F	-30" HG/120/ 350 psi	0/500 psi
R22-134A-404A	1839122 4V22134404H	1839124 4V22134404	F	-30" HG/120/ 350 psi	0/500 psi
R22-407C-410A (Heat Pump)	1839128 4V22407410H	1839129 4V22407410	F	0/800 psi	0/800 psi
R22-404A-410A	1839130 4V22404410H	1839132 4V22404410	F	-30" HG/300/ 500 psi	0/800 psi
R134A-404A-407C	1839135 4V134404407H	1839137 4V134404407	F	-30" HG/120/ 350 psi	0/500 psi
Accuracy	Class 1 - 1% Accuracy (full scale)				
Gauge Connection Type	1/8" NPT Male Fitting				
Valve Type	Double O-ring Piston Style				
Valve Seat (Orifice)	Replaceable Stainless Steel (SAE-style straight thread with O-ring)				
Sight Glass	Bonded steel with SAE-style straight thread with O-ring				
Vacuum Port	3/8" full bore (quantity 1)				
Charge Ports	1/4" (quantity 3)				
Hoses Included	1839143 H60BVS4 60" Hoses with Ball Valve Adapters - Set of 4				
Dimensions					
Length	8-7/8"	8-7/8"			
Width	4"	4"			
Height	7-1/8"	7-1/8"			
	without hook	without hook			
Weight	7.1 lbs.	3.4 lbs.			



Hilmar

T1
96.2
89.2
°F
T2



°C/°F



4-Valve Aluminum Manifold
with Hoses & Dual Readout
Thermometer
1839116

4-VALVE ALUMINUM MANIFOLD WITH HOSES & DUAL READOUT THERMOMETER

Product Specifications

Item Numbers/Product Descriptions						
Refrigerants	With 60" Hoses and Ball Valve Adapters		Temp.	Pressure Range Low	Pressure Range High	
R410A	1839110	4V410HD	F/C	-30" HG/300/500 psi	0/800 psi	
R12-22-502A	1839116	4V1222502HD	F	-30" HG/120/350 psi	0/500 psi	
R22-134A-404A	1839123	4V221344404HD	F	-30" HG/120/350 psi	0/500 psi	
R22-404A-410A	1839131	4V22404410HD	F	-30" HG/300/500 psi	0/800 psi	
R134A-404A-407C	1839136	4V134404407HD	F	-30" HG/120/350 psi	0/500 psi	

Accuracy	Class 1 - 1% Accuracy (full scale)
Gauge Connection Type	1/8" NPT Male Fitting
Valve Type	Double O-ring Piston Style
Valve Seat (Orifice)	Replaceable Stainless Steel (SAE-style straight thread with O-ring)
Sight Glass	Bonded steel with SAE-style straight thread with O-ring
Vacuum Port	3/8" full bore (quantity 1)
Charge Ports	1/4" (quantity 3)
Hoses Included	1839143 H60BVS4 60" Hoses with Ball Valve Adapters - Set of 4
Thermometer Included	1839106 DROT2TCC Dual Readout Thermometer
2 Thermocouples Included	1839108 TCC Thermocouple Clamp

Dimensions	
Length	8-7/8"
Width	4"
Height	7-1/8" without hook
Weight	7.3 lbs.



Scan this QR Code to watch the Aluminum Manifold in action

2-VALVE ALUMINUM MANIFOLD

The rough and tumble durability of our 4-Valve with the simplicity of a 2-Valve design.



Extra Confidence

Built to last with a forged aluminum body. Designed to be leak-resistant with replaceable stainless steel valve seats, SAE-style O-rings and a securely seated, large sight glass.



Comfort Grip

Offers easy access with front-mounted hose positions and a permanent location for temperature clamps.



Easy To Read

Improved graphics and high-contrast colors deliver precise readings at a glance.



A permanent location for the temperature clamps offers quick and convenient storage.



With a forged aluminum body, it can stand up to the roughest, toughest conditions.



Rubberized handles are optimally sized for easy turns.

2-Valve Aluminum Manifold
1839118

Product Specifications

Item Numbers/Product Descriptions					
Refrigerants	Item Numbers	Product Descriptions	Temp.	Pressure Range Low	Pressure Range High
R410A	1839113	2V410	F/C	-30" HG/300/500 psi	0/800 psi
R12-22-502A	1839118	2V1222502	F	-30" HG/120/350 psi	0/500 psi
R22-134A-404A	1839126	2V22134404	F	-30" HG/120/350 psi	0/500 psi
R22-404A-410A	1839134	2V22404410	F	-30" HG/300/500 psi	0/800 psi
R134A-404A-407C	1839139	2V134404407	F	-30" HG/120/350 psi	0/500 psi

Accuracy	Class 1 - 1% Accuracy (full scale)
----------	------------------------------------

Gauge Connection Type	1/8" NPT Male Fitting
-----------------------	-----------------------

Valve Type	Double O-ring Piston Style
------------	----------------------------

Valve Seat (Orifice)	Replaceable Stainless Steel (SAE-style straight thread with O-ring)
----------------------	---

Sight Glass	Bonded Steel with SAE-style straight thread with O-ring
-------------	---

Charge Ports	1/4" (quantity 3)
--------------	-------------------

Dimensions	
Length	8-7/8"
Width	1-3/4"
Height	7-1/8" without hook
Weight	2.5 lbs.



Scan this QR Code to watch the Aluminum Manifold in action

2-VALVE BASIC MANIFOLD

The hilmor 2-Valve Basic Manifold with 60" Hoses provides all the features you've come to expect from a standard manifold, and then some. It has a durable design, improved accessibility and smart functionality.

The 3-1/8" gauges have been optimized for greater readability with improved graphics, high-contrast color and glow-in-the-dark functionality. Sold with hilmor 60" hoses.



2-Valve Basic Manifold
1839119



Easy To Read

Improved graphics and high-contrast colors deliver precise readings at a glance.



Glow In The Dark

Light-activated paint illuminates, so you won't be left in the dark.



Comfort Grip

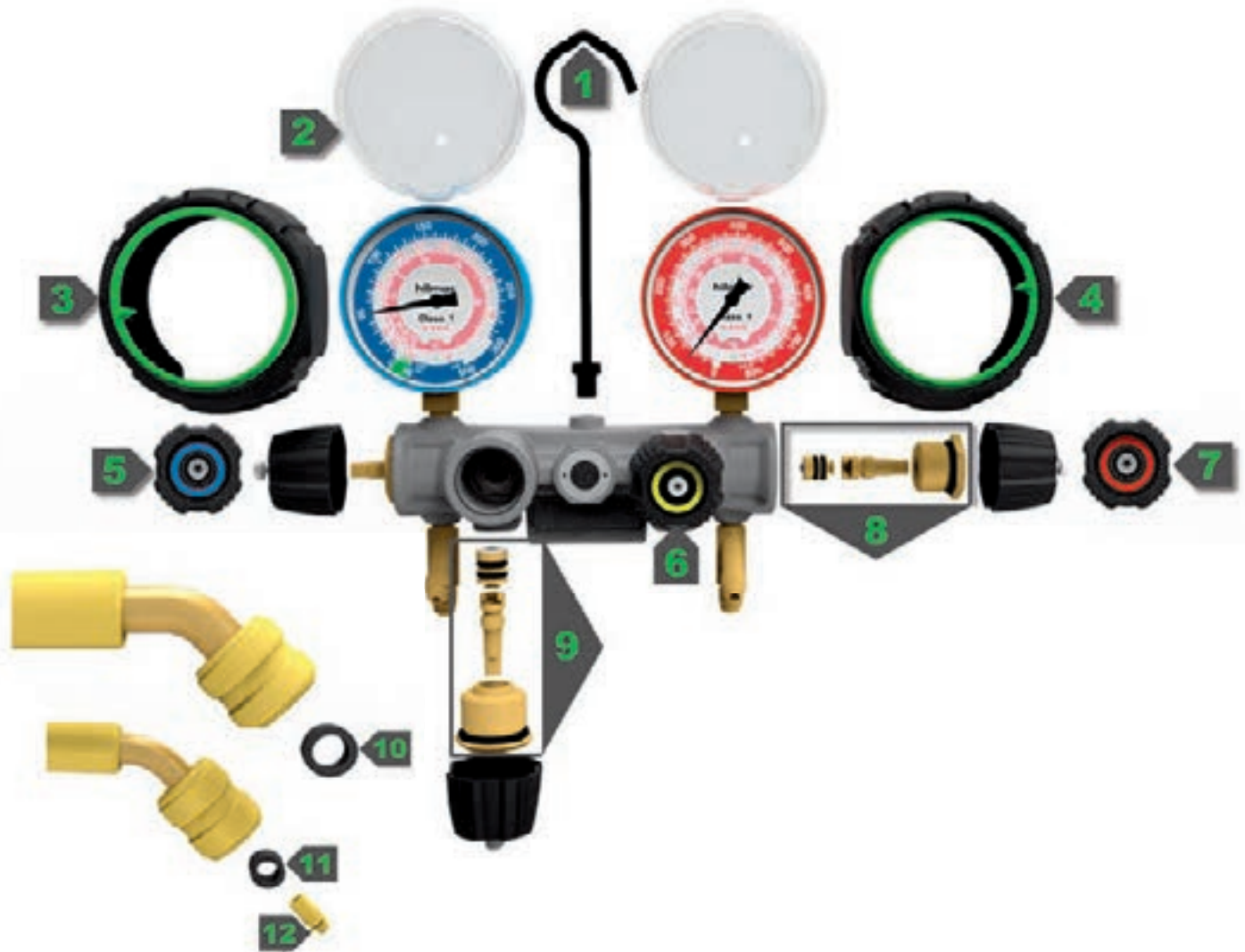
Rubberized handles are optimally sized for easy turns.

Product Specifications

Item Numbers/Product Descriptions					
Refrigerants	With 60" Hoses		Temp.	Pressure Range Low	Pressure Range High
R410A	1839114	2VB410H	F/C	-30" HG/300/500 psi	0/800 psi
R12-22-502A	1839119	2VB1222502H	F	-30" HG/120/350 psi	0/500 psi
R22-134A-404A	1839127	2VB22134404	F	-30" HG/120/350 psi	0/500 psi
R22-404A-410A	1932650	2VB22404410H	F	-30" HG/300/500 psi	0/800 psi
Accuracy	Class 1 - 1% Accuracy (full scale)				
Gauge Connection Type	1/8" NPT Male Fitting				
Valve Type	Double O-ring Piston Style				
Charge Ports	1/4" (quantity 3)				
Hoses Included	1839153 H60S3 Hose 60" - Set of 3				
Dimensions					
Length	7-1/4"				
Width	3"				
Height	6"				
Weight	3.9 lbs.				

Replacement Parts

Category	Item Numbers	Product Descriptions	Location #
Manifolds	1932944	AMH Analog Manifold Hook	1
Manifolds	1932949	MVHB Manifold Valve Handle - Blue	5
Manifolds	1932951	MVHY Manifold Valve Handle - Yellow	6
Manifolds	1932950	MVHR Manifold Valve Handle - Red	7
Manifolds	1932945	VSA2 2-Valve Seat Assembly (2-1/4")	8
Manifolds	1932946	VSA4 4-Valve Seat Assembly (3-1/4", 1-3/8")	9
Gauges	1932986	AGL Analog Gauge Lens	2
Gauges	1932947	LAGBR Low Side Analog Gauge Boot w/Ring	3
Gauges	1932948	HAGBR High Side Analog Gauge Boot w/Ring	4
Hoses	1932984	HGL Hose Gaskets (3/8", Pack of 10)	10
Hoses	1932982	HGS Hose Gaskets (1/4", Pack of 12)	11
Hoses	1932985	HTD Hose Threaded Depressors, Pack of 6	12



DUAL READOUT THERMOMETER



Makes Calculations Easier

The industry's only manifold-compatible compact thermometer with two readings to help simplify the calculation of superheat and subcool.



Superior Versatility

Use it on any gauge set, or remove it and use it independently.



Reads Temperatures Quickly

Two easy-to-use, K-style tube clamp thermocouples get you to the temperature reading quickly.



This thermometer is the first in the industry to attach to any manifold.

Product Specifications

Item Number	1839106
Product Description	DROT2TCC
2 Thermocouples Included	1839108 TCC Thermocouple Clamp
Batteries	AA x 1 (included)
Battery Life	151 hours
Connection Type	K

Measurement	Range	Resolution	Accuracy
Temperature	-76°F to 999.9°F	.10° F/C	+/-2.0°C
Operating Temperature Range		0°C to +50°C (LCD)	

Dimensions	
Length	1-3/4"
Width	1-5/8"
Height	3-7/8"
Weight	11.2 oz.



Scan this QR Code to watch the Dual Readout Thermometer in action



Dual Readout Thermometer
1839106

THERMOCOUPLE CLAMP

Get right to it on up to 1-1/8" tubing with hilmor's Thermocouple Clamp. A K-style connection offers a secure fit and is easy to use with other devices. It is a perfect pairing for the hilmor Dual Readout Thermometer. When the job is done, it is easy to stow it away. Simply wrap the thermocouple wire around the handle, and secure the plug into the clamp.



Fast, Precise Readings

Gets right to the temperature reading up to 1-1/8" tubing.



Secure Connection

K-style connection provides a tight fit and easy use with other devices.



Secure Storage

Stow it away simply by wrapping the thermocouple wire around the clamp and securing the plug.



Protect the thermocouple plug when not in use by wrapping the cord around the handle and plugging into the side socket.

Product Specifications

Item Number	1839108
Product Description	TCC
Connection Type	K
Accuracy	+/-2.0°C
Operating Temperature (plastic)	-40°F to 250°F

Dimensions

Lead wire length	36"
Length	5-1/4"
Width	7/8"
Height	3-1/4"
Weight	3 oz.



Attach K-style clamp to an easily accessible spot on the hilmor manifold.



K-style clamp securely attaches to tubing up to 1-1/8" for measurements on the double.



Thermocouple Clamp
1839108

FINALLY, THE BRAINS OF YOUR OPERATION CAN TAKE A BUMP TO THE HEAD.



Analog Gauge
1839086



Analog Gauge
1839087

ANALOG GAUGES

You need accurate readings, and you need them at a glance. hilmor gauges were made for just that. Simply choose the gauge you need, and put it to work.

Tt

Easy To Read

Improved graphics and high-contrast colors deliver precise readings at a glance.



Rugged & Durable

High-impact protective boots mean dropping it won't ruin your day.



Forget the flashlight. These gauges are equipped with glow-in-the-dark capabilities.



A pressure reminder allows you to set the pressure ring and reference it later.

Product Specifications

Item Numbers/Product Descriptions					
Refrigerants	Low-side (Blue)	Pressure Range	High-side (Red)	Temp.	Pressure Range
R410A	1839082 AG410L	-30" HG/300/500 psi	1839083 AG410H	F/C	0/800 psi
R12-22-502A	1839084 AG1222502L	-30" HG/120/350 psi	1839085 AG1222502H	F	0/500 psi
R12-22-134A	1839086 AG1222134L	-30" HG/120/350 psi	1839087 AG1222134H	F	0/500 psi
R22-134A-404A	1839088 AG22134404L	-30" HG/120/350 psi	1839089 AG22134404H	F	0/500 psi
R22-407C-410A (Heat Pump)	1839090 AG22407410L	0/800 psi	1839091 AG22407410H	F	0/800 psi
R22-404A-410A	1839092 AG22404410L	-30" HG/300/500 psi	1839093 AG22404410H	F	0/800 psi
R134A-404A-407C	1839094 AG134404407L	-30" HG/120/350 psi	1839095 AG134404407H	F	0/500 psi
Accuracy	Class 1 - 1% Accuracy (full scale)				
Size	3-1/8" (80mm) Gauge				
Fitting	1/8" NPT Male connection				
Included Parts	Protective boot and dial indicator ring				
Dimensions					
Depth	1-3/4"				
Diameter	3-5/8"				
Weight	6 oz.				

THIS JOB TAKES SOME THICK SKIN. LUCKILY, OUR HOSES HAVE IT.



If you can stand the pressure, your hoses should, too. We've rethought and retooled the hoses you use every day with smart features like an extra abrasion-resistant layer for superior protection in tough conditions. All of our Hoses are rated for 800 PSI working pressure to work with the newest high-pressure refrigerants. Simply select the Hose and Ball Valves you need. You can choose from Hoses and Ball Valve Adapters individually, or buy them as a set.

HOSES

Hilmor 36" and 60" Hoses are designed with smart features including an extra abrasion-resistant layer for tough environments.



Superior Protection

An extra abrasion-resistant layer for the tough environments of HVAC/R.



Handles High Pressure

Rated for 800 PSI working pressure to work with high-pressure refrigerants.



36" Vacuum Hose
1839159

Product Specifications

60" Hoses

Item Numbers	Product Descriptions	Diameter
1839150	H60R Hose 60" - Red	1/4"
1839151	H60B Hose 60" - Blue	1/4"
1839152	H60Y Hose 60" - Yellow	1/4"
1839153	H60S3 Hose 60" - Set of 3	1/4"
1839154	H6038 Hose 60" - Black - Vacuum	3/8"

Maximum Allowable Working Pressure 800 PSI

Burst Pressure 4000 PSI

Operating Temperature -20°F to +180°F

End Connection Straight by 45 degree

Dimensions

Length 60"
Weight 10 oz.

36" Hoses

Item Numbers	Product Descriptions	Diameter
1839155	H36R Hose 36" - Red	1/4"
1839156	H36B Hose 36" - Blue	1/4"
1839157	H36Y Hose 36" - Yellow	1/4"
1839158	H36S3 Hose 36" - Set of 3	1/4"
1839159	H3638 Hose 36" - Vacuum	3/8"

Maximum Allowable Working Pressure 800 PSI

Burst Pressure 4000 PSI

Operating Temperature -20°F to +180°F

End Connection Straight by 45 degree

Dimensions

Length 36"
Weight 6 oz.

60" REFRIGERATION HOSES WITH BALL VALVE ADAPTERS

Rated for 800 PSI working pressure to work with high-pressure refrigerants.



Superior Protection

An extra abrasion-resistant layer for the tough environments of HVAC/R.



Handles High Pressure

Rated for 800 PSI working pressure to work with high-pressure refrigerants.

Product Specifications

Item Numbers	Product Descriptions	Diameter
1839140	H60BVR Hose 60" - Ball Valve - Red	1/4"
1839141	H60BVB Hose 60" - Ball Valve - Blue	1/4"
1839142	H60BVY Hose 60" - Ball Valve - Yellow	1/4"
1839143	H60BVS4 Hose 60" - Ball Valve - Set of 4	1/4" & 3/8"
1839144	H60BV38 Hose 60" - Ball Valve - 3/8" VAC Black - Vacuum	3/8"

Maximum Allowable Working Pressure 800 PSI

Burst Pressure 4000 PSI

Operating Temperature -20°F to +180°F

Hoses End Connection Straight by Straight

Ball Valve End Connection Straight by 45 degree

Dimensions

Length 70-1/2"

Weight 1.1 lbs.



60" Refrigeration Hoses with Ball Valve Adapters
1839140, 1839141, 1839142

BALL VALVE ADAPTERS

We all know that controlling refrigerant loss on the jobsite is a big deal. And the hilmor Ball Valve Adapter is here to help. It is designed with an extra 6" of hose for additional length.



Superior Protection

An extra abrasion-resistant layer for the tough environments of HVAC/R.



Handles High Pressure

Rated for 800 PSI working pressure to work with high-pressure refrigerants.



Knob turns quickly and easily to restrict flow from hoses.

Product Specifications

Item Number	Product Descriptions	Diameter
1839145	BVR Ball Valve Adapter - Red	1/4"
1839146	BVB Ball Valve Adapter - Blue	1/4"
1839147	BVY Ball Valve Adapter - Yellow	1/4"
1839148	BVS Ball Valve Adapters - Set of 3	1/4"
1839149	BV38 Ball Valve Adapter - Black - Vacuum	3/8"

Maximum Allowable Working Pressure 800 PSI

Burst Pressure 4000 PSI

Operating Temperature -20°F to +180°F

End Connection Straight by 45 degree

Dimensions

Length 8"
Weight 4 oz.



Ball Valve Adapters
1839145, 1839146, 1839147, 1839149

IT TAKES BRAINS AND BRAWN TO BEND TUBES.



Quality bends on the job are a necessity. Unfortunately, so are the headaches that come with them. Not anymore. All of our bending tools are intelligently designed to give you more power and more control, resulting in a precision bend you're proud to show off. Choose the bending tool that fits your needs, and get ready to conquer your job - one precisely bent tube at a time.



Tri-Tube Bender
1839026



Compact Bender Kit with Reverse
Bending Attachment
1926598

COMPACT BENDER KITS

1839032 Compact Bender Kit

Body and crossbar for 1/4" to 7/8", 1/4", 5/16", 3/8", 1/2", 5/8", 3/4" and 7/8" mandrels.

1926598 Compact Bender Kit with Reverse Bending Attachment

Body and crossbar for 1/4" to 7/8", 1/4", 5/16", 3/8", 1/2", 5/8", 3/4", 7/8" mandrels and Reverse Bending Attachment.



Simple Setup

Universal crossbar and color-coded mandrels make identifying and changing sizes quick and easy.



One-handed Operation

A ratcheting mechanism and innovative release lever allow for bending with one hand.



Small Space Capable

A compact design allows it to fit where others can't.



A reverse bending attachment for bends in the opposite direction.



A ratcheting lever gives you the brawn to bend tubes with one hand.



A quick-release button allows you to free the tube with ease and without damage.



A locking slider keeps the bender compact for storage and transport.

Product Specifications

Item Numbers	1839032	1926598
Product Descriptions	CBK	CBKRB
Tube Sizes (O.D.)	1/4", 5/16", 3/8", 1/2", 5/8", 3/4", 7/8"	

Dimensions

Length	16-3/8"	16-3/8"
Width	12-1/4"	12-1/4"
Height	3-1/4"	3-1/4"
Weight	8.8 lbs.	10.8 lbs.

Replacement Parts

Descriptions	Sizes	Bend Radius	Item Numbers
CBB Body	N/A	N/A	1839033
CBR Bar for 1/4" - 7/8"	N/A	N/A	1839034
CBM14 Mandrel	1/4"	1-1/4"	1839035
CBM516 Mandrel	5/16"	1-1/4"	1839036
CBM38 Mandrel	3/8"	1-1/8"	1839037
CBM12 Mandrel	1/2"	1-1/8"	1839038
CBM58 Mandrel	5/8"	1-1/2"	1839039
CBM34 Mandrel	3/4"	2-3/8"	1839040
CBM78 Mandrel	7/8"	2-3/4"	1839041
CBRBM Rev Bend Att	N/A	N/A	1890999

Tube Materials Soft Tubing Only
Copper, Steel, Aluminum, Brass



Scan this QR Code to watch the Compact Bender in action

LEVER BENDERS

You need a tool that can give you a precise bend every time. The Hilmor Lever Bender can do just that. It's designed with markings to help you center the tube correctly.



Simple Setup

A spring-loaded tube holding mechanism securely holds the tube in place.



Precise Angles

Markings on the side help create up to 180° bends.



More Leverage, More Bends

Can be placed into a vise for multiple bends or for extra leverage.

Product Specifications

Item Numbers	1839028	1839029	1839030
Product Descriptions	LB58	LB34	LB78
Tube Sizes (O.D.)	5/8"	3/4"	7/8"
Tube Sizes (O.D.)	16 mm	19 mm	22 mm
Dimensions			
Length	29"	32-1/3"	34-1/2"
Width	4-1/3"	5-1/2"	5-3/4"
Height	3-3/4"	4"	4-1/4"
Weight	5.6 lbs.	6.6 lbs.	7.7 lbs.
Tube Materials	Soft Tubing Only Copper, Steel, Aluminum, Brass		
Bend Radius	2-1/4"	3"	3-1/4"



Scan this QR Code to watch the Lever Bender in action



Stainless steel rollers reduce friction against the tube.



A spring-loaded mechanism helps to securely hold the tube in place.



The bender can be placed in a vise for even more leverage.



A comfort-grip handle can lessen the strain, allowing easier 180° bends.

Lever Bender
1839028

TRI-TUBE BENDERS

From start to final bend, the Hilmor Tri-Tube Bender has you covered. It just takes simple sizing.



Simple Sizing

Indicators in the handles can help you find the correct tube size.



Quick Identification

Color-coded to help you spot the right tube size and align in the groove.



Precise Angles

Markings on the side help create up to 180° bends.



Scan this QR Code to watch the Tri-Tube Bender in action

SPRING BENDERS

Getting an accurate bend by hand isn't always easy. But, our Spring Benders can help simplify things. Four different benders are included to fit 1/4", 3/8", 1/2" and 5/8" tubing. Simply slip the Spring Bender over soft-copper or aluminum tubing, and count on the spring to keep the tube from kinking.



Spring Benders
1839031

Product Specifications

Item Numbers	1839026	1839027
Product Descriptions	TC1438	TC1412
Tube Sizes (O.D.)	1/4", 5/16", 3/8"	1/4", 3/8", 1/2"
Dimensions		
Length	14"	19"
Width	2-1/4"	3-1/2"
Height	3-1/4"	4-1/4"
Weight	1.1 lbs.	2.4 lbs.
Tube Materials	Soft Tubing Only Copper, Steel, Aluminum, Brass	



Tri-Tube Bender
1839027

Tri-Tube Bender
1839026

Product Specifications

Item Number	1839031			
Product Description	SB 4PC Set			
Tube Sizes (O.D.)	1/4"	3/8"	1/2"	5/8"
Dimensions				
Size	1/4"	3/8"	1/2"	5/8"
Length	11-1/3"	11-1/3"	11-1/3"	11-1/3"
Weight	5 oz.	5 oz.	5 oz.	5 oz.
Tube Materials	Soft Tubing Only Copper, Steel, Aluminum, Brass			

GET IN. GET OUT. GET ON TO THE NEXT JOB.



Simple setup, precise positioning and a secure hold. It's a common theme you'll find throughout Hilmor's line of flaring tools, and it's the reason our flaring tools deliver a precise, quality flare every time. Simply choose the flaring tool that fits your needs, and get ready to conquer your next job.



Orbital Flare
1838952

ORBITAL FLARE

The hilmor Orbital Flare was designed to produce quality flares – again and again. A tube-stop arrow allows precise positioning and placement so you can keep that nickel in your pocket. Plus, a clutch mechanism stops the flare to eliminate cracking the tube.



Precise Flares, Every Time

An off-center mounted cone spins on an axis to effectively produce quality flares.



No Cracked Tubes

A clutch mechanism stops the flaring when the job is done.



Simple Setup

A clothespin-inspired, spring-loaded block grips the tube securely.



Easy To Position

A tube-stop arrow slides to set correct height and positioning while ball detents allow for easy flaring cone alignment.



A clutch mechanism stops the flare when the job is done to eliminate cracking the tube.



An off-center mounted cone helps to uniformly shape the tube.

Product Specifications

Item Number 1838952

Product Description FTO

Tube Sizes (O.D.) 3/16", 1/4", 5/16", 3/8", 1/2", 5/8", 3/4"

Dimensions

Length 8-1/2"

Width 4-5/8"

Height 5-1/4"

Weight 3.8 lbs.

Tube Materials Soft Tubing Only
Copper, Steel, Aluminum, Brass

Flare Type 45 degree



Scan this QR Code to watch the Orbital Flare in action



Orbital Flare
1838952

BASIC FLARE

The hilmor flaring tools are the no-muss, no-fuss way to flare. Our Basic Flare handles 1/8" to 3/4" tubes.



Durable

The cast steel yoke and hardened flaring bar are made to be knocked around.



Control

Steel wing nuts make it easy to hold pipe secure.



Quality Flares

An extra-long handle provides more leverage and self-centers for a consistent quality flare.



Basic Flare
1838956

LARGE BASIC FLARE

The hilmor Large Basic Flare has all the advantages of hilmor flaring tools with the bulked-up size to handle 3/4" to 1-1/8" tubes. And it can fit into spaces other flaring and swaging tools can't.



Durable

The cast steel yoke and hardened flaring bar are made to be knocked around.



Control

Steel wing nuts make it easy to hold pipe secure.



Quality Flares

An extra-long handle provides more leverage and self-centers for a consistent quality flare.



Large Basic Flare
1838955

Product Specifications

Item Number	1838956
Product Description	FT1834
Tube Sizes (O.D.)	1/8", 3/16", 1/4", 5/16", 3/8", 1/2", 5/8", 3/4"
Dimensions	
Length	8-3/4"
Width	5-1/4"
Height	4-1/4"
Weight	2.4 lbs.
Tube Materials	Soft Tubing Only Copper, Steel, Aluminum, Brass
Flare Type	45 degree
Replacement Parts	
Item Number	1839004
Product Description	FSC1434 Replacement Cone

Product Specifications

Item Number	1838955
Product Description	FTL
Tube Sizes (O.D.)	3/4", 7/8", 1-1/8"
Dimensions	
Length	7"
Width	6"
Height	5-1/4"
Weight	3.7 lbs.
Tube Materials	Soft Tubing Only Copper, Steel, Aluminum, Brass
Flare Type	45 degree
Replacement Parts	
Item Number	1839007
Product Description	SC58118 Flare Cone

QUICK-ENGAGE FLARE AND SWAGE KIT

Extra appendages are hard to come by these days. Instead, opt for the all-new hilmar Quick-Engage Flare and Swage. Simple setup, precise positioning and a secure hold allow you to quickly conquer and move on to the next job.



Less Work

Allows for faster flares and swages because it requires fewer rotations.



Simple Setup

A clothespin-inspired, spring-loaded block grips the tube securely.



Easy to Position

A tube-stop arrow slides to set correct height and positioning, while ball detents allow for easy flaring cone alignment.

Product Specifications

Item Number 1838947

Product Description FS

Tube Sizes (O.D.) 3/16", 1/4", 5/16", 3/8", 1/2", 5/8", 3/4"

Dimensions

Length 8-1/2"
Width 4-5/8"
Height 7-1/2"
Weight 3.5 lbs.

Tube Materials Soft Tubing Only
Copper, Steel, Aluminum, Brass

Flare Type 45 degree



Scan this QR Code to watch the Quick-Engage Flare and Swage in action

Kit Contents

1 Bar, 1 Quick-Engage Yoke, 1 Flare Cone 3/16" to 3/4", 5 Swage Heads



Quick-Engage Flare and Swage
1838947



Ball detents ensure proper and precise alignment to guarantee a perfect flare or swage every time.



Push down the yoke and with fewer rotations, you get a precise flare or swage.



An innovative spring-loaded block holds the tube firmly in place.

LARGE FLARE/SWAGE

When you need a precise, quality flare or swage, the hilmor Large Flare/Swage delivers. Its compact design allows it to fit where others can't. And, with a long handle for additional leverage, it can help give you a leg up on any job.



Durable

The cast steel yoke and hardened flaring bar are made to be knocked around.



Control

Steel wing nuts make it easy to hold pipe secure.



Small Space Capable

A compact design allows it to be used even in cramped spaces.



Quality Flares

An extra-long handle provides more leverage and self-centers for a consistent quality flare.



Easily changeable swage heads are made for 3/4", 7/8" and 1-1/8" tubing.

Product Specifications

Item Number	1838948
Product Description	FSL
Tube Sizes (O.D.)	3/4", 7/8", 1-1/8"

Dimensions

Length	7"
Width	6"
Height	6"
Weight	6.4 lbs.

Tube Materials	Soft Tubing Only Copper, Steel, Aluminum, Brass
----------------	--

Flare Type	45 degree
------------	-----------

Replacement Parts

Item Numbers	Descriptions	Sizes
1839002	FSA58 Swage Adapter	5/8"
1839003	FSA34 Swage Adapter	3/4"
1839005	FSA78 Swage Adapter	7/8"
1839006	FSA118 Swage Adapter	1-1/8"
1839007	FSC58118 Flare Cone	5/8" to 1-1/8"



Large Flare/Swage
1838948

NO SWEAT. NO STRAIN. JUST PICTURE-PERFECT SWAGES.



At hilmor, we've built our swaging tools around the way you work. We've retooled the design to make swaging tools much more convenient and comfortable to use. And our tools deliver. Each one is made to be precise.



Compact Swage Tool
1839015

Compact Swage Tool
1839015



COMPACT SWAGE TOOL KIT

Kit Contents

3/8", 1/2", 5/8", 3/4" and 7/8" Expander Heads, Deburrer and Compact Swage Tool.



Picture-perfect Swaging

Simply select the correct head place it on the tool and make a quality swage.



Less Effort, More Control

The power to swage 1-5/8" tubing and the control to swage 5/16" without splitting the tube.



Small Space Capable

A compact design allows it to be used even in cramped spaces.



One-handed Operation

The lever mechanism and release button allow for one-handed swaging without the fatigue.

Hydraulic mechanism and release button make one-handed swages possible.

Product Specifications

Item Number	1839015
Product Description	CS
Kit Contents	3/8", 1/2", 5/8", 3/4", 7/8" Expander Heads, Deburrer, Compact Swage Tool
Tube Sizes (O.D.)	3/8", 1/2", 5/8", 3/4", 7/8"
Dimensions	
Length	9"
Width	1-3/4"
Height	5"
Weight	8.5 lbs.

Expander Heads & Replacement Parts

Item Numbers	Descriptions	Sizes
1839016	CSEH516 Expander Head	5/16"
1839017	CSEH38 Expander Head	3/8"
1839018	CSEH12 Expander Head	1/2"
1839019	CSEH58 Expander Head	5/8"
1839020	CSEH34 Expander Head	3/4"
1839021	CSEH78 Expander Head	7/8"
1839022	CSEH118 Expander Head	1-1/8"
1839023	CSEH138 Expander Head	1-3/8"
1839024	CSEH158 Expander Head	1-5/8"
1839025	CSB Compact Swage Body Kit	N/A
1839052	DBUR Deburrer	N/A

Tube Materials	Soft Tubing Only Copper, Steel, Aluminum, Brass	
Recommended Replacement Hydraulic Fluid	HV-15	
Recommended Expander Head Lubricant	NLGI1 or NLGI2	



Multiple expander heads quickly switch out to accommodate 5/16" to 1-5/8" tubing.

PUNCH SWAGE SET

Get the sizes you need, right when you need them, with the hilmor 5-piece Punch Swage Set. Punches are available in a set with 1/4", 5/16", 3/8", 1/2" and 5/8".

Product Specifications

Item Number	1839008				
Product Description	S1458				
Tube Sizes (O.D.)	1/4"	5/16"	3/8"	1/2"	5/8"
Dimensions					
Size	1/4"	5/16"	3/8"	1/2"	5/8"
Diameter	1/2"	2/3"	2/3"	7/8"	7/8"
Height	3"	3"	3"	3-3/4"	3-3/4"
Weight	3 oz.	3 oz.	3 oz.	3 oz.	3 oz.
Tube Materials	Soft Tubing Only Copper, Steel, Aluminum, Brass				



Punch Swage Set
1839008

MULTI-SWAGE PUNCH

One punch. Multiple tube sizes. The hilmor Multi-Swage Punch is designed to fit 1/4" to 5/8" tubes. Made of steel and chrome-coated for a durable design with less friction against the tube.



The Multi-Swage Punch tool is intelligently designed with a broader base to reduce missed hits.

Product Specifications

Item Number	1839009
Product Description	MS
Tube Sizes (O.D.)	1/4" to 5/8" (1/4", 5/16", 3/8", 1/2", 5/8")
Dimensions	
Diameter	7/8"
Height	5-1/4"
Weight	6 oz.
Tube Materials	Soft Tubing Only Copper, Steel, Aluminum, Brass



Multi-Swage Punch
1839009

CUT TIME, HARD WORK AND EXCESS TUBING.



Trim back on the unnecessary complexities of the job with hilmor's new line of tubing cutters. They're ruggedly durable and designed to slice through copper, PEX and PVC tubing like it's their job. Whether you're up on a ladder or stuck in a crawl space, hilmor tubing cutters will perform time and time again.



Ratcheting Plastic Tubing Cutter
2-3/8" MAX OD
1885395

SMALL DIAMETER TUBING CUTTERS

When you're in a tight space, this tool can definitely cut it. hilmor's ruggedly durable Small Diameter Tubing Cutters offer precision cuts with minimal burrs.



Rugged & Durable

An ergonomic, cast-zinc body and shock-resistant steel wheel reduce burrs while increasing life and durability.



Small Space Capable

Compact design allows this tool to fit where others can't.



Maximum Protection

A full-stop threading system offers maximum protection for cutting wheels.



Precision Flare Cutting

A flare-cutting groove allows for precision removal of material. Item 1885383 only.



Spare Blade Storage

A bonus blade comes with the tool and can be stored easily in the handle. Items 1885382 & 1885383 only.

Product Specifications

Item Numbers	1885381	1885382
Product Descriptions	TC1858	TC181
Diameters	1/8" - 5/8"	1/8" - 1"

Dimensions

Length	1-3/8"	1-3/4"
Width	3/4"	3/4"
Height	1-3/4"	2-3/8"
Weight	4 oz.	6 oz.

Item Number	1885383
Product Description	TC18118 TC
Diameter	1/8" - 1-1/8"

Dimensions

Length	2"
Width	1"
Height	3"
Weight	8 oz.



Small Diameter Tubing Cutters
1/8"- 5/8", 1/8"- 1", 1/8"- 1-1/8"
1885381, 1885382, 1885383

LARGE DIAMETER TUBING CUTTERS

This cutter can talk the talk without walking the walk. hilmor's Large Diameter Tubing Cutters feature a four-roller tracking system to keep the tube from threading. All the while, a shock-resistant steel wheel cuts through the tube like a knife through butter.



Rugged & Durable

An ergonomic, cast-zinc body and shock-resistant steel wheel reduce burrs while increasing life and durability.



Precision Flare Cutting

A flare-cutting groove allows for precision removal of material.



Maximum Protection

A full-stop threading system offers maximum protection for cutting wheels.



Spare Blade Storage

A bonus blade comes with the tool and can be stored easily in the handle.



Accurate Cutting

A unique, four-roller tracking system keeps the tube from threading.



Professional Deburring

Conveniently deburr tubes with a replaceable machinist's reamer.



Quick on the Job

Quick-action ratcheting helps you get the job done in a snap. Item 1885385 only.

Product Specifications

Item Numbers	1885384	1885385
Product Descriptions	TC18138	TC18134
Diameters	1/8" - 1-3/8"	1/8" - 1-3/4"

Dimensions

Length	2-3/4"	3"
Width	1-3/4"	1-3/4"
Height	6-1/4"	7-7/8"
Weight	1.4 lbs.	1.7 lbs.

Accessories

Item Number	1885386
Product Description	Small Tubing Cutter Wheels Fits hilmor Tubing Cutters: 1885381, 1885382
Item Number	1885387
Product Description	Tubing Cutter Wheels Fits hilmor Tubing Cutters: 1885383, 1885384, 1885385
Item Number	21024TCD
Product Description	Replacement Deburrer for 1885384 and 1885385



Large Diameter Tubing Cutters
1/8" - 1-3/8" and 1/8" - 1-3/4"
1885384, 1885385

PLASTIC TUBING CUTTER

We've cut out the unnecessary complexity so you can cut plastic. hilmar's Plastic Tubing Cutter gets the job done with ease. Simple design and intuitive features allow you to get a handle on any cut.



Rugged & Durable

An ergonomic, cast-aluminum body and stainless-steel blade increase life and durability.



Comfortable Grip

A rubberized handle makes it easier to use in wet and dirty environments.



Easy to Open and Close

A conveniently positioned locking latch allows for true one-handed operation.



A stainless steel blade gives you the strength and precision for any cut.

Product Specifications

Item Number	1885388
Product Description	PTC Plastic Tube Cutter
Diameter	1-5/16" MAX OD

Dimensions

Length	2-3/4"
Width	1-1/8"
Height	8-2/3"
Weight	13 oz.

Replacement Blade

Item Number	1885390
Description	PTCRB Plastic TC Rep Blade



Scan this QR Code for blade change instructions for the 1-5/16" Ratcheting Plastic Tubing Cutter



Plastic Tubing Cutter
1-5/16" MAX OD
1885388

RATCHETING PLASTIC TUBING CUTTERS



Rugged & Durable

An ergonomic, cast-aluminum body and stainless-steel blade increase life and durability.



Comfortable Grip

A rubberized handle makes it easier to use in wet and dirty environments.



Easy to Open and Close

A conveniently placed release button allows for true one-handed operation, while a locking tab secures the blade in place.



Rugged & Durable

An ergonomic, cast-aluminum body and high-carbon steel blade increase life and durability.



Easy to Open

Simply pull both handles apart to quickly start the next cut.



Product Specifications

Item Number	1885393
Product Description	RPTC158
Diameter	1-5/8" MAX OD

Dimensions

Length	4-1/8"
Width	1-1/8"
Height	9"
Weight	1.0 lbs.

Replacement Blade

Item Number	1885394
Description	RPTC158RB Rat TC Rep Blade



Scan this QR Code for blade change instructions for the 1-5/8" Ratcheting Plastic Tubing Cutter

Ratcheting Plastic Tubing Cutter
1-5/8" MAX OD
1885393

Product Specifications

Item Number	1885395
Product Description	PTC238
Diameter	2-3/8" MAX OD

Dimensions

Length	6"
Width	1-1/3"
Height	13-1/8"
Weight	2.5 lbs.

Replacement Blade

Item Number	1885396
Description	RPTC238RB Rat TC Rep Blade



Scan this QR Code for blade change instructions for the 2-3/8" Ratcheting Plastic Tubing Cutter

Ratcheting Plastic Tubing Cutter
2-3/8" MAX OD
1885395

ALL THE TOOLS IT TAKES TO TACKLE DUCT WORK.



Whether you need to bend, crimp, pierce or cut sheet metal or duct work, our family of Sheet Metal & Duct Tools are up for the challenge.



3" Hand Seamer
1891185

AVIATION SNIPS

Sheet metal, duct, stainless steel — it's all no match for the Aviation Snips. With a comfortable overmolded grip and strong, durable blades they'll cut like new, job after job.



Rugged and Durable

High-carbon steel blades and a reinforced chrome silicon spring increase life and durability.



Quick Identification

Color-coded handle inserts and splines make identification simple.



Comfortable Grip

Over-molded handles reduce hand fatigue and won't slip or twist.



Left Cut Aviation Snips
1891133



Right Cut Offset Aviation Snips
1891138



Bulldog Aviation Snip
1891136

Product Specifications

Aviation Snips

Item Numbers

1891133 1891134 1891135 1891172

Product Descriptions

SNIPAL SNIPAR SNIPAS SNIPASLR

Capacity

CRS	18ga	18ga	18ga	18ga
SS	22ga	22ga	22ga	22ga

Dimensions

Length	10-3/8"	10-3/8"	10-3/8"	10-3/8"
Width	3-1/2"	3-1/2"	3-1/2"	9-1/2"
Height	7/8"	7/8"	7/8"	9-1/2"
Weight	1.1 lbs.	1.1 lbs.	1.1 lbs.	3.3 lbs.

Cutting Direction



3PC Set

Bulldog & Offset Aviation Snips

Item Numbers

1891136 1891137 1891138

Product Descriptions

SNIPAB SNIPOL SNIPOR

Capacity

CRS	16ga	18ga	18ga
SS	20ga	22ga	22ga

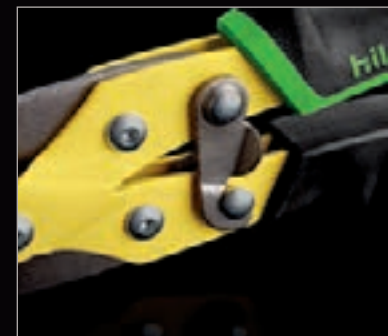
Dimensions

Length	9-1/2"	10-1/4"	10-1/4"
Width	3-1/2"	3-1/4"	3-1/4"
Height	7/8"	1"	1"
Weight	1.0 lbs.	1.1 lbs.	1.1 lbs.

Cutting Direction



Color coded handle inserts for quick identification.



Lock for quick and easy storage.

TINNER SNIPS

From straight to curved cuts in sheet metal and duct, the Tinner Snip cuts it.



Rugged & Durable

Precision-formed, hot-drop forged steel blades increase life and durability.



Comfortable Grip

Over-molded handles reduce hand fatigue and won't slip or twist.

12" Tinner Snip
1891175

10" Tinner Snip
1891177

10" Duckbill Tinner Snip
1891178



Product Specifications

Item Numbers	1891177	1891175	1891178
Product Descriptions	SNIP10T	SNIP12T	SNIPDBT
Sizes	10"	12"	10"
Capacity			
CRS	22ga	20ga	24ga
SS	26ga	22ga	26ga
Dimensions			
Length	10-3/8"	12-3/8"	10-3/8"
Width	4-3/8"	4-3/8"	4-3/8"
Height	1/2"	1/2"	1/2"
Weight	1.1 lbs.	1.5 lbs.	1.0 lbs.

Cutting Direction



ALUMINUM HANDLE SNIP

These Snips will get the job done quick. Their cut length means longer, cleaner cuts and less time for you on the job.



Rugged & Durable

Lightweight aluminum construction and replaceable blades increase life and durability.



Less Work

A 3-1/2" cut length requires fewer cuts to complete the job.



Added Versatility

Use either right or left hand to easily make cuts.

Aluminum Handle Snip
1891173



Product Specifications

Item Number	1891173
Product Description	SNIP13AH
Capacity	
CRS	24ga
SS	28ga
Dimensions	
Length	13"
Width	4"
Height	1/2"
Weight	1.2 lbs.
Cutting Direction	
Replacement Blades	
Item Number	1891174
Description	SNIP13AHRB 13" AL HAND REP BLADES

PIPE DUCT CUTTER

Show sheet metal who's boss. Whether you're bending, flattening, cutting or joining sheet metal, these tools let you do it accurately and comfortably.



Rugged and Durable

High-carbon steel blades and a reinforced chrome silicon spring increase life and durability.



Comfortable Grip

Over-molded handles reduce hand fatigue and won't slip or twist.



Pipe Duct Cutter

For cutting metal pipe and duct.

Product Specifications

Item Number	1891189
Product Description	SMTPDC
Capacity	
CRS	18ga
SS	22ga
Dimensions	
Length	10-1/2"
Width	3"
Height	7/8"
Weight	1.2 lbs.

Pipe Duct Cutter
1891189



V-NOTCHER



Rugged and Durable

High-carbon steel blades and a reinforced chrome silicon spring increase life and durability.



Comfortable Grip

Over-molded handles reduce hand fatigue and won't slip or twist.



V-Notcher

Cuts V-Shaped notch in sheet metal.

Product Specifications

Item Number	1891180
Product Description	SMTVN1
Capacity	
CRS	18ga
SS	22ga
Dimensions	
Length	9-1/4"
Width	3"
Height	7/8"
Weight	1.2 lbs.

V-Notcher
1891180



SNAP LOCK PUNCH



Rugged and Durable

Stainless steel blades and a reinforced chrome silicon spring increase life and durability.



Comfortable Grip

Over-molded handles reduce hand fatigue and won't slip or twist.



Snap Lock Punch

For joining sheet metal, duct and pipe.

Product Specifications

Item Number	1891182
Product Description	SMTSLP
Capacity	
CRS	18ga
SS	22ga
Dimensions	
Length	8-7/8"
Width	3"
Height	7/8"
Weight	1.1 lbs.

Snap Lock Punch
1891182



HAND CRIMPERS



Rugged and Durable

High-carbon steel blades and a reinforced chrome silicon spring increase life and durability.



Comfortable Grip

Over-molded handles reduce hand fatigue and won't slip or twist.



Hand Crimper

For crimping round metal pipe.

Product Specifications

Item Numbers	1891186	1891187
Product Descriptions	SMTBC3	SMTBC5
Capacity		
CRS	18ga	18ga
SS	22ga	22ga
Dimensions		
Length	9-3/4"	9-3/4"
Width	3"	3"
Height	7/8"	7/8"
Weight	1.0 lbs.	1.2 lbs.

3 Blade Crimper,
5 Blade Crimper
1891186, 1891187



HAND SEAMERS



Rugged and Durable

Stainless-steel blades and a reinforced chrome silicon spring increase life and durability.



Comfortable Grip

Over-molded handles reduce hand fatigue and won't slip or twist.



Quick Identification

1/4" depth marks on the blades allow for quick bends.



Seamer

For bending and flattening sheet metal.

Product Specifications

Item Numbers	1891185	1891183	1891184
Product Descriptions	SMTHS3	SMTHS03	SMTHS6
Sizes	3"	3" Offset	6"
Capacity			
CRS	18ga	18ga	18ga
SS	22ga	22ga	22ga
Dimensions			
Length	9-3/4"	8-1/4"	10"
Width	3-1/8"	5"	6"
Height	7/8"	3-1/4"	3-1/2"
Weight	1.5 lbs.	1.4 lbs.	2.2 lbs.



1/4" depth marks on the blades allow for quick bends.



Locking Latch.

3" Offset Hand Seamer
1891183

6" Hand Seamer
1891184

3" Hand Seamer
1891185



FOLDING TOOLS

From end caps to folds for drive cleats, bend sheet metal to your will with incredible ease and accuracy every time.



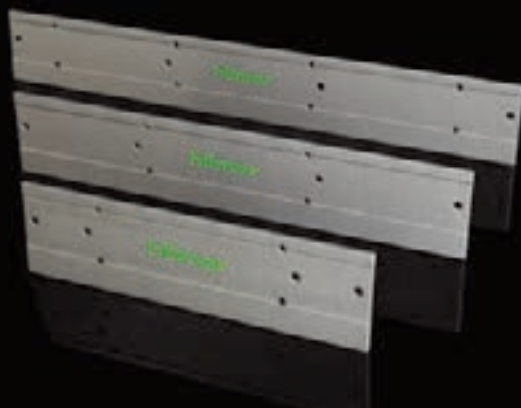
Folding Tool

Built for both 3/8" (10mm) and 1" (25mm) folds.



Accurate Folding

Equipped with sight holes for proper depth alignment.



Product Specifications

Item Numbers	1891146	1890985	1890986
Product Descriptions	SMTFT12	SMTDT18	SMTFT24
Capacity CRS	18ga	18ga	18ga
Dimensions			
Length	12"	18"	24"
Width	3-1/4"	3-1/4"	3-1/4"
Height	1/5"	1/5"	1/5"
Weight	1.4 lbs.	2.1 lbs.	2.8 lbs.

12", 18" & 24" Folding Tools
1891146, 1890985, 1890986

DUCT STRETCHER

Now you can pull duct together with one hand. Even large gaps are no match for the hilmor Duct Stretcher.



Rugged and Durable

An all-aluminum body increases life and durability.



Small Space Capable

Features a low profile for use in tight spaces.



Added Versatility

Additional spacing holes allow wheels to be adjusted for use on large gaps.



Comfortable Grip

A cushion grip for reduced hand fatigue.

Product Specifications

Item Number	1890987
Product Description	SMTDS
Dimensions	
Length	16"
Width	1/4"
Height	1-1/2"
Weight	11 oz.
Replacement Wheels	
Item Number	1890988
Product Description	SMTDSRW Rep Wheels



Duct Stretcher
1890987

HOLE CUTTERS

Cutting holes in sheet metal just got a whole lot easier. The hilmor Hole Cutters allow you to bring some power to what was previously a manual job.



Rugged and Durable

Includes a lightweight aluminum frame, with a milled bit for life and durability.



Added Versatility

Get two-in-one capabilities with both inch and metric scales.



Perfect Fit

Fits into any corded or cordless drill with a 1/4" or larger chuck.

Product Specifications

Item Numbers	1891191	1891192
Product Descriptions	SMTHC212	SMTHC220
Sizes	2" TO 12"	2" TO 20"

Dimensions

Length	7"	11"
Width	3"	3"
Height	1"	1"
Weight	1.1 lbs.	1.5 lbs.

Replacement Part

Item Number	1891193
Description	Drill Bit 1 Pack

DUCT SLITTING TOOL

The Duct Slitting Tool is a snip's most trusted companion. You'll see why when you need to pierce, slit or scribe lines in sheet metal.



Comfortable Grip

Over-molded handle reduces hand fatigue and won't slip or twist.



Extra Versatility

Designed to scribe lines, or pierce and enlarge holes in sheet metal.

Product Specifications

Item Number	1890990
Product Description	SMTDR

Dimensions

Length	9-3/8"
Width	1-1/4"
Height	1-1/4"
Weight	6.4 oz.



2" TO 12" & 2" TO 20" Hole Cutters
1891191, 1891192



Duct Slitting Tool
1890990

DUCT KNIFE

Yeah, it's sharp. Keep this trusty knife by your side for when you need to quickly slice through ductboard.



Rugged and Durable

A hardened stainless steel blade increases life and durability.



Comfortable Grip

Over-molded handle reduces hand fatigue and won't slip or twist.



Added Versatility

Serrated and standard cutting edges made to cut duct board and flexible duct.



Simple Storage

A puncture-resistant nylon sheath with a belt loop allows for quick and easy storage.

Product Specifications

Item Number	1891331
Product Description	SMTDK
Dimensions	
Length	11-5/8"
Width	5/8"
Height	1-3/8"
Weight	10 oz.

Duct Knife
1891331



CABLE TIE TENSIONING TOOL

Quickly tighten and cut cable ties without leaving sharp edges, so you won't have to worry about scrapes, cuts, or cursing.



Versatility

Works with both light and heavy-duty nylon cable ties.



Clean Cut

Easy-to-use cutting lever allows for flush cutting of excess material.

Product Specifications

Item Number	1891190
Product Description	SMTDR
Dimensions	
Length	7-5/8"
Width	3-7/8"
Height	5/8"
Weight	10 oz.

Cable Tie Tensioning Tool
1891190



TOOLS TO HELP YOU KICK IT OFF OR DRIVE IT HOME.



When it comes to tightening and loosening fasteners, you want tools that can get the job done fast without damaging the screw. Same for the next job and the job after that. That's why our line of Screwdrivers, Nut Drivers, Nutsetters and Hex Keys are built for the long haul.



T-Handle Hex Key Set
1891471

MAGNETIC NUTSETTERS

When the job needs a little more power, call on the hilmor Magnetic Nutsetter. It will fit right in.



Secure Hold

A rare-earth magnet helps maintain a secure hold to keep fasteners firmly in place.



Impact Compatible

Bits are specially manufactured for use with impact drivers.



Quick ID

A color-coded band makes size identification simple.



Reduced Stopping

Designed to drive fasteners on the side instead of the corners, reducing breakage and stripping.



1/4" Shank

The 1/4" quick-change shank is designed for use in impact drivers and rotary drills.



Rugged & Durable

Bits are built to last, manufactured from cold-forged, high-grade steel and coated with black oxide to resist corrosion.

Product Specifications

Item Numbers	1885435	1885436	1885437
Product Descriptions	MNS14178	MNS516178	MNS38178
Sizes	1/4"	5/16"	3/8"

Dimensions

Length	1/2"	4/7"	5/8"
Width	1/2"	4/7"	5/8"
Height	1-7/8"	1-7/8"	1-7/8"
Weight	2 oz.	2 oz.	2 oz.



Designed for reduced stripping.



1/4", 5/16" and 3/8" Magnetic Nutsetters
[1885435](#), [1885436](#), [1885437](#)

MAGNETIC NUT DRIVERS

At hilmor, we've taken the nut driver up a notch. Simply put, it's ready to conquer when you are.



Secure Hold

A magnetic tip keeps fasteners firmly in place.



Quick Identification

A color-coded insert makes size identification simple.



More Torque

A slip-resistant grip and wrench flats allow for maximum leverage. Wrench flat items 1839076 and 18839077 only.



Big Bolt Capable

A hollowed shaft allows for use on long bolts.



Rugged & Durable

Designed to last with a durable chrome-vanadium steel construction.

Sizes

1-1/2" Shaft Magnetic Nut Drivers:

Available in 1/4" and 5/16" sizes or as a 2-piece set.

3" and 6" Shaft Magnetic Nut Drivers:

Sold individually, or choose our full 7-piece set or our handy 2-piece set.

18" Shaft Magnetic Nut Drivers:

Available in 1/4" and 5/16" sizes.

Product Specifications

1-1/2" Magnetic Nut Drivers

Item Numbers	1839055	1839056	1839057
Product Descriptions	SHSM14	SHSM516	SHSM2PC
Sizes	1/4"	5/16"	Set of 2 1/4" & 5/16"
Colors	Red	Yellow	Red & Yellow

Dimensions

Length	3-1/2"	3-1/2"	3-1/2"
Width	1-1/4"	1-1/4"	1-1/4"
Height	1-1/4"	1-1/4"	1-1/4"
Weight	2 oz.	2 oz.	2 oz.

18" Magnetic Nut Drivers

Item Numbers	1839076	1839077
Product Descriptions	XLHSM14	XLHSM516
Sizes	1/4"	5/16"
Colors	Red	Yellow

Dimensions

Length	22"	22"
Width	1-1/4"	1-1/4"
Height	1-1/4"	1-1/4"
Weight	6 oz.	6 oz.



MAGNETIC NUT DRIVERS

Product Specifications

3" Magnetic Nut Drivers								
Item Numbers								
1839058	1839059	1839060	1839061	1839062	1839063	1839064	1839066	1839065
Product Descriptions								
HSM316	HSM14	HSM516	HSM1132	HSM38	HSM716	HSM12	HSM2PC	HSM7PC
Sizes								
3/16"	1/4"	5/16"	11/32"	3/8"	7/16"	1/2"	Set of 2 - 1/4" & 5/16"	Set of 7
Colors								
Black	Red	Yellow	Green	Blue	Brown	Red	Red & Yellow	Multi
Dimensions								
Length								
6-7/8"	6-7/8"	6-7/8"	6-7/8"	6-7/8"	7-1/4"	7-1/4"	6-7/8"	6-7/8" 7-1/4"
Width								
1-1/4"	1-1/4"	1-1/4"	1-1/4"	1-1/4"	1-3/8"	1-3/8"	1-1/4"	1-1/4" 1-3/8"
Height								
1-1/4"	1-1/4"	1-1/4"	1-1/4"	1-1/4"	1-3/8"	1-3/8"	1-1/4"	1-1/4" 1-3/8"
Weight								
3 oz.	3 oz.	3 oz.	3 oz.	3 oz.	6 oz.	6 oz.	6 oz.	1.7 lbs.



A color-coded insert makes size identification quick and easy.



3" Magnetic Nut Driver Set
1839065

MAGNETIC NUT DRIVERS

Product Specifications

6" Magnetic Nut Drivers								
Item Numbers								
1839067	1839068	1839069	1839070	1839071	1839072	1839073	1839074	1839075
Product Descriptions								
LHSM316	LHSM14	LHSM516	LHSM1132	LHSM38	LHSM716	LHSM12	LHSM2PC	LHSM7PC
Sizes								
3/16"	1/4"	5/16"	11/32"	3/8"	7/16"	1/2"	Set of 2 - 1/4" & 5/16"	Set of 7
Colors								
Black	Red	Yellow	Green	Blue	Brown	Red	Red & Yellow	Multi
Dimensions								
Length								
9-7/8"	9-7/8"	9-7/8"	9-7/8"	9-7/8"	10-1/4"	10-1/4"	9-7/8"	9-7/8" 10-1/4"
Width								
1-1/4"	1-1/4"	1-1/4"	1-1/4"	1-1/4"	1-3/8"	1-3/8"	1-1/4"	1-1/4" 1-3/8"
Height								
1-1/4"	1-1/4"	1-1/4"	1-1/4"	1-1/4"	1-3/8"	1-3/8"	1-1/4"	1-1/4" 1-3/8"
Weight								
3 oz.	3 oz.	3 oz.	3 oz.	3 oz.	6 oz.	6 oz.	6 oz.	1.9 lbs.



A wrench flat lets you tighten with a wrench for ease and extra confidence.



6" Magnetic Nut Driver Set
1839075



Quick-Change Magnetic Nut Driver 1/4" & 5/16"
Shaft Length 3"
1839054

QUICK-CHANGE MAGNETIC NUT DRIVERS

Quickly switch between 1/4" and 5/16", the two most common sizes.

x2

Added Versatility

Quickly switch between 1/4" and 5/16", the two most common sizes.



Secure Hold

A magnetic tip on both ends keeps fasteners firmly in place.



Quick Identification

A color-coded insert on the bands and bottom makes size identification simple.



Big Bolt Capable

A hollowed shaft allows for use on long bolts.



Rugged & Durable

Designed to last with a durable chrome-vanadium steel construction.

Product Specifications

1/4" and 5/16" Quick-Change Magnetic Nut Drivers

Item Numbers	1839054	1891260
--------------	---------	---------

Descriptions	QCND	QCND6
--------------	------	-------

Shaft Length	3"	6"
--------------	----	----

Sizes	1/4" & 5/16"	1/4" & 5/16"
-------	--------------	--------------

Dimensions

Length	7-1/2"	10-3/8"
--------	--------	---------

Width	1-3/8"	1-3/8"
-------	--------	--------

Height	1-3/8"	1-3/8"
--------	--------	--------

Weight	6 oz.	6 oz.
--------	-------	-------



Quick-Change Magnetic Nut Drivers 1/4" & 5/16"
Shaft Length 3", 6"
1839054, 1891260

RATCHETING 9 IN 1 MULTI-TOOL

Be a master of all trades. With 9 different bits, a ratcheting mechanism and a rubber grip, it's one tool that will help you do more than you ever thought possible.



Extra Durable

Designed with a high torque ratcheting mechanism and thick shaft walls for long life and less stripping.



More Torque

A slip-resistant grip allows for maximum leverage.



Simple Setup

Easily change between forward, reverse and locked positions.

Product Specifications

Item Number	1891259
Product Description	MTR91
Bit Sizes	#1 & #2 Phillips, 3/16" & 1/4" Slotted, #2 Square, 1/4", 5/16", and 3/8" Nut Drivers, and Valve Core Remover.
Dimensions	
Length	8-1/2"
Width	1-1/4"
Height	1-1/4"
Weight	12 oz.



Features 9 driving bits including a Valve Core Remover.



9 IN 1 MULTI-TOOL

When you need more out of one tool, hilmor is here to help. In fact, our 9 in 1 Multi-Tool even gives you a little more. Tackle any on-the-job challenge with bits, including #1 and #2 Phillips, 3/16" and 1/4" Slotted, #2 Square, 1/4", 5/16", and 3/8" Nut Drivers, and Valve Core Remover.



Extra Durable

Designed with thick shaft walls for long life and less stripping.



More Torque

A slip-resistant grip allows for maximum leverage.

Product Specifications

Item Number	1839053
Product Description	9IN1SV
Bit Sizes	#1 & #2 Phillips, 3/16" & 1/4" Slotted, #2 Square, 1/4", 5/16", and 3/8" Nut Drivers, and Valve Core Remover.

Dimensions

Length	7-1/4"
Width	1-3/8"
Height	1-3/8"
Weight	7 oz.



9 In 1 Multi-Tool
1839053

STUBBY 6 IN 1 MULTI-TOOL

The Stubby Multi-Tool is at its best when space is at a premium, giving you the versatility of 6 tools in 1.



Small Space Capable

A compact design allows for use in tight spaces.



More Torque

A slip-resistant grip allows for maximum leverage.



Simple Setup

Easily change between six different drivers - 3/16" and 1/4" Slotted, #1 and #2 Phillips, 1/4" and 5/16" Nut Drivers.

Product Specifications

Item Number	1891351
Product Description	MTS
Bit Sizes	3/16" and 1/4" Slotted, #1 and #2 Phillips, 1/4" and 5/16" Nut Drivers.

Dimensions

Length	4-7/8"
Width	1-1/4"
Height	1-1/4"
Weight	3 oz.



Stubby 6 in 1 Multi-Tool
1891351



5 Piece Screwdriver Set
1891087



7 Piece Screwdriver Set
1891088

KEYSTONE TIP DEMOLITION SCREWDRIVERS

These tools really do live up to their name. They can take a pounding and aren't afraid of a little prying or chiseling either.



Rugged & Durable

Designed to last with a heat-treated, chrome-plated through shaft and metal strike cap.



More Torque

A slip-resistant grip allows for maximum leverage.



Secure Fit

A machined tip allows for a better fit.

Product Specifications

Item Numbers	1891395	1891396
Product Descriptions	SDSLKTDEMO144	SDSLKTDEMO5167
Shaft Length	4"	7"
Tip Type/Size	1/4"	5/16"
Dimensions		
Length	8"	11-1/8"
Width	1"	1-1/8"
Height	1"	1-1/8"
Weight	6 oz.	6 oz.



Metal Strike Cap.

5/16" Keystone Tip Demolition Screwdriver 7"
1891396



1/4" Keystone Tip Demolition Screwdriver 4"
1891395

KEYSTONE TIP & CABINET TIP SCREWDRIVERS

Here's a tip: use screwdrivers that won't strip out your screws. When you demand tools that are as durable as you are, hilmor Screwdrivers fit that description and then some.



More Torque

A slip-resistant grip allows for maximum leverage.



Quick Identification

Easy-to-read tip marking on the handle makes identification quick and easy.

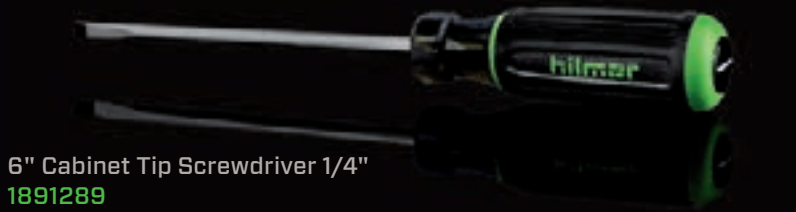


Rugged & Durable

Designed to last with a heat-treated, chrome-plated shaft.



8" Keystone Tip Screwdriver 3/8"
1891286



6" Cabinet Tip Screwdriver 1/4"
1891289

Product Specifications

KEYSTONE TIP SCREWDRIVERS					
Item Numbers	1891355	1891352	1891356	1891358	1891286
Product Descriptions	SDSLKTRS14112	SDSLKTSS144	SDSLKTRS144	SDSLKTRS5166	SDSLKTRS388
Shaft Length	1-1/2"	4"	4"	6"	8"
Tip Type/Size	1/4"	1/4"	1/4"	5/16"	3/8"
Dimensions					
Length	3-1/2"	8-1/8"	8"	10-1/2"	12-1/2"
Width	1-1/4"	1"	1-1/8"	1-1/4"	1-3/8"
Height	1-1/4"	1"	1-1/8"	1-1/4"	1-3/8"
Weight	2 oz.	4 oz.	4 oz.	6 oz.	8 oz.
CABINET TIP SCREWDRIVERS					
Item Numbers	1891287	1891288	1891289		
Product Descriptions	SDSLCTRS3163	SDSLCTRS3166	SDSLCTRS3163		
Shaft Length	3"	6"	6"		
Tip Type/Size	3/16"	3/16"	1/4"		
Dimensions					
Length	6-1/2"	9-1/2"	10-1/4"		
Width	1"	1"	1"		
Height	1"	1"	1"		
Weight	3 oz.	3 oz.	4 oz.		

TERMINAL BLOCK SCREWDRIVER



More Torque

A slip-resistant grip allows for maximum leverage.



Quick Identification

Easy-to-read tip marking on the handle makes identification quick and easy.



Rugged & Durable

Designed to last with a heat-treated, chrome-plated shaft.



Secure Fit

A machined tip allows for a better fit.

Product Specifications

Item Number	1891397
Product Description	SDTB4
Shaft Length	4"
Tip Type/Size	Terminal Block
Dimensions	
Length	7-1/8"
Width	7/8"
Height	1"
Weight	2 oz.



Terminal Block Screwdriver 4"
1891397

PHILLIPS TIP SCREWDRIVERS



More Torque

A slip-resistant grip allows for maximum leverage.



Quick Identification

Easy-to-read tip marking on the handle makes identification quick and easy.



Rugged & Durable

Designed to last with a heat-treated, chrome-plated shaft.

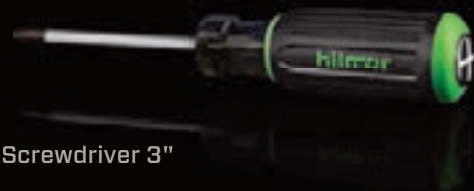


Secure Fit

A machined tip allows for a better fit.

Product Specifications

Item Numbers	1891290	1891391	1891392	1891393	1891394
Product Descriptions	SDPHRS13	SDPHRS2	SDPHRS24	SDPHRS27	SDPHRS36
Tip Type/Size	#1PH	#2PH	#2PH	#2PH	#3PH
Shaft Length	3"	1-1/2"	4"	7"	6"
Dimensions					
Length	6-1/2"	3-1/2"	8"	11"	10-1/2"
Width	1"	1-1/4"	1"	1"	1-1/4"
Height	1"	1-1/4"	1"	1"	1-1/4"
Weight	3 oz.	2 oz.	4 oz.	5 oz.	6 oz.



#1 Phillips Tip Screwdriver 3"
1891290

SCREWDRIVER SETS

When you're not sure what the day may bring, hilmor Screwdriver Sets have you covered, no matter what you run into on the job.



More Torque

A slip-resistant grip allows for maximum leverage.



Quick Identification

Easy-to-read tip marking on the handle makes identification quick and easy.



Rugged & Durable

Designed to last with a heat-treated, chrome-plated shaft.



Secure Fit

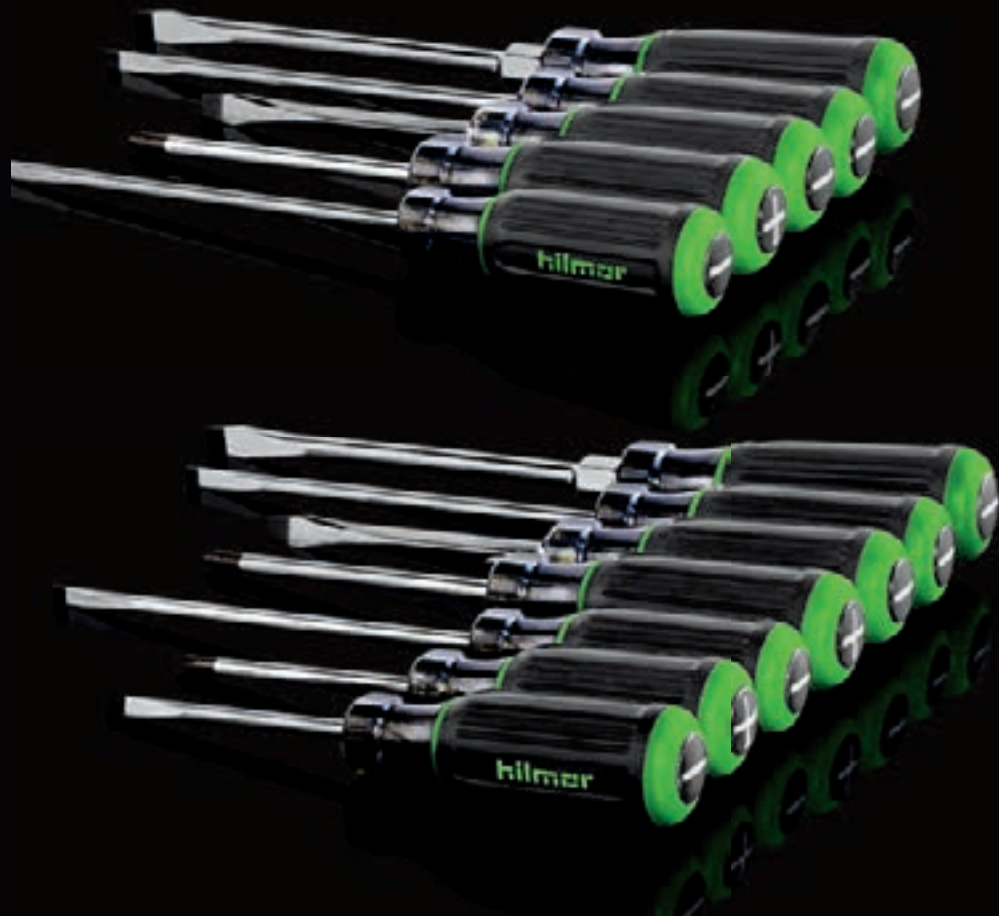
A machined tip allows for a better fit.

Product Specifications

Item Numbers	1891087	1891088
Product Descriptions	SD5PC	SD7PC
Includes	#2 Phillips Tip Round Shank 4" 3/16" Cabinet Tip Round Shank 6" 1/4" Cabinet Tip Round Shank 6" 1/4" Keystone Tip Square Shank 4" 5/16" Keystone Tip Round Shank 6"	
	#1 Phillips Tip Round Shank 3" #2 Phillips Tip Round Shank 4" 3/16" Cabinet Tip Round Shank 3" 3/16" Cabinet Tip Round Shank 6" 1/4" Cabinet Tip Round Shank 6" 1/4" Keystone Tip Square Shank 4" 5/16" Keystone Tip Round Shank 6"	

Dimensions

Length	10-1/4"	10-1/4"
Width	1-1/4"	1-1/4"
Height	1-1/4"	1-1/4"
Weight	1.4 lbs.	1.7 lbs.



5 Piece Screwdriver Set
1891087

7 Piece Screwdriver Set
1891088

PRECISION SCREWDRIVER SET

Complete with machined tips and rotating heads, these tools are perfect for precision work with small screws. And their storage pouch keeps them together so they'll always be easy to find.



Comfortable Grip

Over-molded handles reduce hand fatigue and won't slip or twist.



Maximum Precision

A rotating head allows for precise adjustments while giving you greater control.



Quick Identification

Easy-to-read tip marking on the handle makes identification quick and easy.



Storage

Pouch included for quick and easy storage.

Product Specifications

Item Number	1891089
Product Description	SDPS
Includes	1/16" x 2" Slotted #0 x 3" Phillips 3/32" x 3" Slotted 1/8" x 4" Slotted 1/8" x 6" Slotted

Dimensions

Length	10-1/4"
Width	5"
Height	1/8"
Weight	10 oz.



Includes storage pouch.



Tip markings for quick identification.



HEX KEY SETS

Get the full socket contact you need. Our slip-resistant Folding Hex Key Sets are available in standard and metric. And the ball ends of our Ball End Hex Key Set let you access and turn hard-to-get-at fasteners at up to 30° angles. Get equipped with all the hex keys you need in standard and metric sizes.

Product Specifications

Item Number	1839049
Product Description	HKS Ball End Hex Key Set
Sizes	.05", 1/16", 5/64", 3/32", 7/64", 1/8", 9/64", 5/32", 3/16", 7/32", 1/4", 5/16", 3/8"

Dimensions

Length	7-1/4"
Width	2-3/4"
Height	3/4"
Weight	13 oz.



Ball End Hex Key Set
1839049

You don't fold on the job. Luckily, this set does for easy, convenient storage. Available in inch and metric.

Product Specifications

Item Numbers	1839048	1891472
Product Descriptions	HKFS Folding Hex Key Set Inch	HKFSM Folding Hex Key Set Metric
Sizes	5/64", 3/32", 7/64", 1/8", 9/64", 5/32", 3/16", 7/32", 1/4"	1.5mm, 2mm, 2.5mm, 3mm, 4mm, 5mm, 6mm, 8mm

Dimensions

Length	4-1/4"	4-1/4"
Width	7/8"	7/8"
Height	1-5/8"	1-5/8"
Weight	5 oz.	5 oz.



Folding Hex Key Set
Metric
1891472

Folding Hex Key Set
Inch
1839048

T-HANDLE HEX KEY SET

Turn without the burn. hilmor's T-Handle Hex Key Set is designed to ease gripping and handling, improving the torque performance. After all, your hands are your livelihood.



Rugged and Durable

Hardened, nickel chrome-plated shafts increase life and durability.



Comfortable Grip

Ergonomic molded handles reduce hand fatigue and won't slip or twist.



Quick Identification

Easy-to-read size markings make identification simple.



Added Versatility

A 6" shaft works well in tight spaces, while the 1/2" shaft gives you more leverage.

Product Specifications

Item Number	1891471
Product Description	HKTH T-Handle Hex Key Set
Sizes	3/32", 5/32", 7/64", 3/16", 1/8", 7/32", 9/64", 1/4", 5/16", 3/8"

Dimensions

Length	8-3/4"
Width	7-3/4"
Height	5-3/8"
Weight	2.8 lbs.



Easy to read size markings.



T-Handle Hex Key Set
1891471

TOOLS THAT ARE AS DURABLE AS YOU.



Cutting, gripping, stripping, and crimping. Our family of Pliers, Wrenches and Wire Strippers let you do all that and more, while each tools' comfortable grip is a treat for your hands.



8" Long Nose Plier
1885398



12" Quick-Adjusting Tongue and Groove Plier
1890998

QUICK-ADJUSTING TONGUE & GROOVE PLIERS

Don't play the guessing game. These pliers' Quick-Adjusting V-Jaw allows for a precise adjustment with just a push of a button. So now it's quicker and easier to loosen, tighten or grip hex, square and round fasteners or pipe.



Simple Sizing

A push button allows for quick adjustments while multiple grooves guarantee precise positioning.



Comfortable Grip

Over-molded handle reduces hand fatigue and won't slip or twist.



Strong Hold

Machined jaws increase grip on the material every time.

Product Specifications

Item Numbers	1890996	1890997	1890998
Product Descriptions	PBTGP8	PBTGP10	PBTGP12
Length	8"	10"	12"
Jaw Capacity	1-1/2"	1-3/4"	2-3/16"
Dimensions			
Length	8-1/4"	10-1/8"	12-1/4"
Width	5/8"	3/4"	3/4"
Height	1-3/4"	2-1/4"	2-1/2"
Weight	9 oz.	13 oz.	1.4 lbs.



8", 10" and 12" Quick-Adjusting Tongue & Groove Pliers
1890996, 1890997, 1890998

TONGUE & GROOVE PLIERS

No matter what job you use these tools for, the sharp teeth in the jaws will ensure what you're grabbing isn't going anywhere.



Comfortable Grip

Over-molded handles reduce hand fatigue and won't slip or twist.



Strong Hold

Machined jaws increase grip on the material every time.



Product Specifications

Item Numbers	1885366	1885367	1885368
Product Descriptions	GJP8	GJP10	GJP12
Sizes	8"	10"	12"
Jaw Capacity	1"	1-11/16"	2-1/16"
Dimensions			
Length	8"	10-1/4"	12"
Width	2-1/2"	3-1/4"	3-1/4"
Height	3/4"	3/4"	7/8"
Weight	10 oz.	1.1 lbs.	1.5 lbs.

8", 10" and 12" Tongue & Groove Pliers
1885366, 1885367, 1885368

SLIP JOINT PLIERS



Comfortable Grip

Over-molded handles reduce hand fatigue and won't slip or twist.



Strong Hold

Machined jaws increase grip on the material every time.



Product Specifications

Item Numbers	1885364	1885365
Product Descriptions	SJP6	SJP8
Sizes	6"	8"
Jaw Capacity	5/8"	5/8"
Dimensions		
Length	6-3/4"	8-1/4"
Width	2"	2-1/4"
Height	3/4"	3/4"
Weight	8 oz.	12 oz.

6" and 8" Slip Joint Pliers
1885364, 1885365

LINEMAN'S PLIERS

Cutting with these tools is a cinch. And with a grip that lasts and lasts, they'll be there for you and ready for action, time after time.



Stays Sharp

A laser-hardened cutting edge will stay sharper for longer.



Strong Hold

Cross-cut knurled jaws increase grip on the material every time.



Comfortable Grip

Over-molded handles reduce hand fatigue and won't slip or twist.

Product Specifications

Item Numbers	1885399	1885411
Product Descriptions	LP85	LP95
Sizes	8-1/2"	9-1/2"
Dimensions		
Length	8-3/4"	9-1/2"
Width	2"	2-1/4"
Height	7/8"	7/8"
Weight	13 oz.	1.0 lbs.



8-1/2" and 9-1/2" Lineman's Pliers
1885399, 1885411

LONG NOSE PLIERS



Stays Sharp

A laser-hardened cutting edge will stay sharper for longer.



Strong Hold

Cross-cut knurled jaws increase grip on the material every time.



Comfortable Grip

Over-molded handles reduce hand fatigue and won't slip or twist.

Product Specifications

Item Numbers	1885397	1885398
Product Descriptions	LNP6	LNP8
Sizes	6"	8"
Dimensions		
Length	6-7/8"	8-5/8"
Width	2-1/8"	2-1/8"
Height	5/8"	3/4"
Weight	4 oz.	8 oz.



6" and 8" Long Nose Pliers
1885397, 1885398

DIAGONAL CUTTING PLIERS



Stays Sharp

A laser-hardened cutting edge will stay sharper for longer.



Comfortable Grip

Over-molded handles reduce hand fatigue and won't slip or twist.



Product Specifications

Item Numbers	1885412	1885362	1885363
Product Descriptions	DCP6	DCP7	DCP8
Sizes	6"	7"	8"
Dimensions			
Length	6-3/4"	7-1/4"	8"
Width	2-1/8"	2-1/8"	2-1/8"
Height	3/4"	3/4"	3/4"
Weight	4 oz.	8 oz.	12 oz.

6", 7" and 8" Diagonal Cutting Pliers
1885412, 1885362, 1885363

CRIMPING TOOL



Stays Sharp

A hardened cutting edge will stay sharper for longer.



Comfortable Grip

Over-molded handles reduce hand fatigue and won't slip or twist.



10" Crimping Tool
1885429

Product Specifications

Item Number	1885429
Product Description	FC10
Size	10"
Capacity	
Wire	10-22AWG
Insulated Terminals	10-22AWG
Non-Insulated Terminals	10-22AWG
Dimensions	
Length	9-7/8"
Width	2-1/4"
Height	3/4"
Weight	1.1 lbs.

ADJUSTABLE WRENCHES

Leave chance to your poker game. These tools won't have you guessing. And they're as versatile as they come.



Comfortable Grip

Over-molded handles reduce hand fatigue and won't slip or twist.



Added Versatility

Get two-in-one capabilities with both inch and metric scales.

Product Specifications

Item Numbers	1885369	1885370	1885421	1885422
Product Descriptions	AW6	AW8	AW10	AW12
Sizes	6"	8"	10"	12"
Jaw Capacity Up To	1"	1-1/8"	1-1/4"	1-1/2"
Dimensions				
Length	6-3/8"	8-1/4"	10"	12-1/8"
Width	1-3/4"	1"	2-5/8"	2-7/8"
Height	1/2"	5/8"	3/4"	3/4"
Weight	6 oz.	12 oz.	1.1 lbs.	1.7 lbs.



6", 8", 10" & 12" Adjustable Wrenches
1885369, 1885370, 1885421, 1885422

WIRE STRIPPERS

These handy tools have clearly marked gauge indicators so you can strip wires without damaging them. Plus a sharp cutting edge is there when you need it.



Comfortable Grip

Over-molded handles reduce hand fatigue and won't slip or twist.



Quick ID

Easy to read size markings on the jaws make identification simple.



Bolt Cutting

Cuts 4-40, 5-40, 6-32, 8-32, 10-24, 10-32 bolts and screws to desired size. *1885424 Only.

Product Specifications

Item Number	1885427	1885426	1885424
Product Descriptions	WS6	WS7	WS8
Sizes	6"	7"	8"
Capacity	10-20AWG	10-20AWG	10-22AWG
Dimensions			
Length	6-1/2"	7-1/4"	8"
Width	2-1/4"	2-1/8"	2-5/8"
Height	5/8"	5/8"	5/8"
Weight	5 oz.	6 oz.	8 oz.

8" Wire Stripper
1885424



7" Wire Stripper
1885426



6" Wire Stripper
1885427



SELF-ADJUSTING WIRE STRIPPER

x2 Added Versatility
Crimp insulated and non-insulated terminals 10-22 AWG.

Comfortable Grips
Over-molded handles reduce hand fatigue and won't slip or twist.

STOP Maximum Control
An adjustable stop controls the length of wire being stripped.

Precise Stripping
A micro-adjusting knob allows for stripping down to 30 AWG and up to 8 AWG.

Self-Adjusting
Automatically adjusts to strip and cut wire 10-24 AWG.

Product Specifications

Item Number	1885423
Product Description	WSSA
Sizes	Self-Adjusting
Capacity	
Wire	10-24AWG
Insulated Terminals	10-22AWG
Non-Insulated Terminals	10-22AWG
Dimensions	
Length	8-3/8"
Width	3-1/2"
Height	5/8"
Weight	13 oz.



Adjustable Stop & Micro-Adjusting Knob.

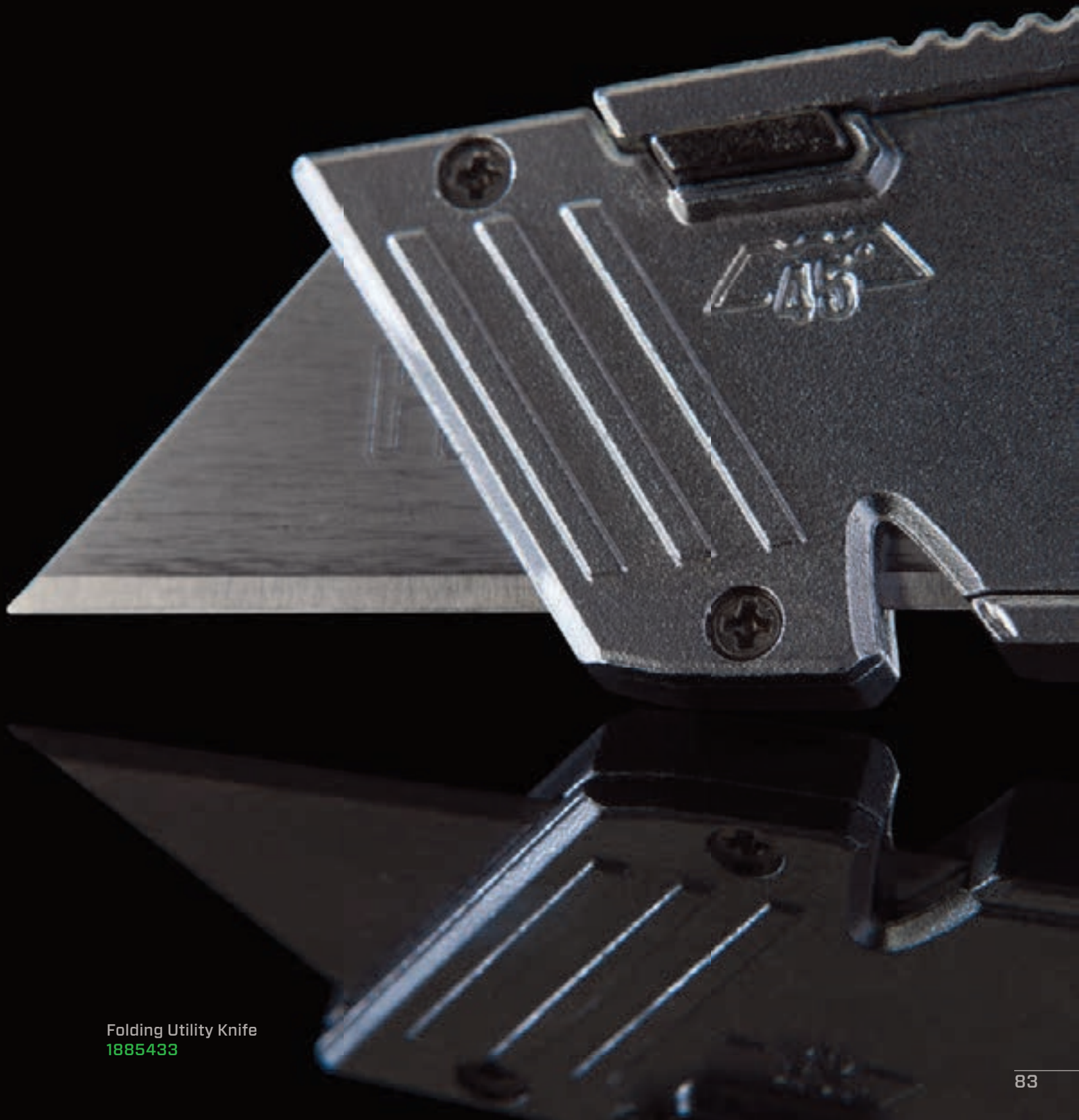


Self-Adjusting Wire Stripper
1885423

STAY SHARP ON THE JOB.



Sure, you have knives. But you don't have these knives. hilmer's new line of utility knives can definitely cut it. They're ruggedly durable and seriously sharp. Plus, they come with all the safety features you need to keep you in one piece. Like a Bi-Metal, shatter-resistant blade.



Folding Utility Knife
1885433

RETRACTABLE UTILITY KNIFE

This is a great knife to have by your side. Quick cuts come standard with a unique trigger grip. Plus, you've got a few spare blades in the handle when you need them.



Rugged and Durable

An all-metal body and Bi-Metal blade increase life and durability.



Secure Storage

Conveniently store up to five extra blades in the handle.



Easy to Change

Change your blade quickly and easily without the use of a separate tool.



Easy to Cut

Get easier cutting on the pull with a unique trigger grip.



Bi-Metal Blade

Three Bi-Metal blades are included.

Product Specifications

Item Number	1885434
-------------	---------

Product Description	UKHR
---------------------	------

Dimensions

Length	6-3/4"
--------	--------

Width	1"
-------	----

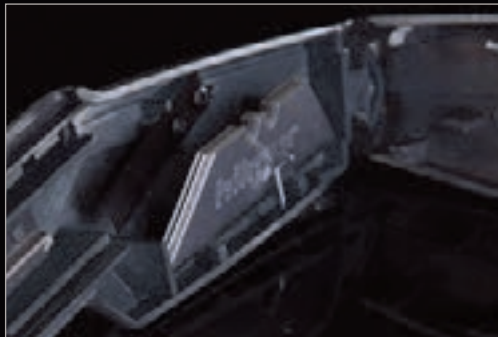
Height	6-3/4"
--------	--------

Weight	6 oz.
--------	-------

Bi-Metal Utility Knife Blades

Item Number	1885432
-------------	---------

Product Description	BMUKB Bi-Metal Utility Knife Blades 5PK
---------------------	--



A shatter resistant Bi-Metal blade gives you strength and precision. Store up to five blades in the handle.



Retractable Utility Knife
1885434

FOLDING UTILITY KNIFE

hilmer's Folding Utility Knife stands up to the test with an all metal body and Bi-Metal blade. It's your new knife.



Rugged and Durable

An all-metal body and Bi-Metal blade increase life and durability.



Securely Locks Blade

A blade-locking mechanism prevents the blade from coming out during use.



One-handed Operation

A liner-lock for one-handed operation and extra safety.



Superior Versatility

A built-in wire-stripping channel for up to 10-gauge wire is there when you need it.



Belt Clip

A belt clip keeps knife close for easy access.



Bi-Metal Blade

One Bi-Metal utility knife blade is included.

Product Specifications

Item Number	1885433
Product Description	UKHF
Dimensions	
Length	4"
Width	3/4"
Height	1-1/2"
Weight	5 oz.
Bi-Metal Utility Knife Blades	
Item Number	1885432
Product Description	BMUKB Bi-Metal Utility Knife Blades 5PK



You won't fold on the job. With a liner lock, this knife won't either. Until you want it to.



Folding Utility Knife
1885433

THE REWARD IS IN THE DETAIL.



If you like to set the bar high, you need service tools that do the same.
These will help you tend to every last detail, so you can get the job done right.

SERVICE WRENCHES

Smart features that save your knuckles and your time. Our Straight Service Wrench makes changing sizes quick and easy. Our Offset Service Wrench makes maneuvering around cramped spaces second nature. The reversible Ratchet Wrench has square openings of 1/4" and 3/16" on one end and 3/8" and 5/16" on the other end. And, when it comes to accessing liquid- and suction-based valves, reach for our Hex Key Adapter. It works on 3/16" and 5/16" hex valves.



Hex Key Adapter
1839046

Product Specifications

Hex Key Adapter

Item Number	1839046
Product Description	SWHKA
Hex Valve Sizes	3/16" and 5/16"

Dimensions

Length	2-1/8"
Width	3/8"
Height	3/8"
Weight	1 oz.

Product Specifications

Item Numbers			
	1839042	1839043	1839045
Product Descriptions			
	SWS Service 1/4 X 3/16 SQ 3/8 X 5/16 SQ	SWOS Offset 1/4 X 3/16 SQ 3/8 X 5/16 SQ	SWLR Service LR 1/2 X 9/16 Hex 3/16 X 1/4 SQ
Square Sizes			
	1/4", 3/16" 3/8", 5/16"	1/4", 3/16" 3/8", 5/16"	1/4", 3/16"
Hex Sizes			
	N/A	N/A	1/2", 9/16"
Accessories			
1839046 SWHKA Service Hex Key Adapter works on 3/16" and 5/16" Hex Valves			
Dimensions			
Length	5-1/2"	5-1/4"	6-1/2"
Width	1/2"	3/4"	1/2"
Height	7/8"	7/8"	1"
Weight	3 oz.	3 oz.	5 oz.



Straight Service Wrench
1839042

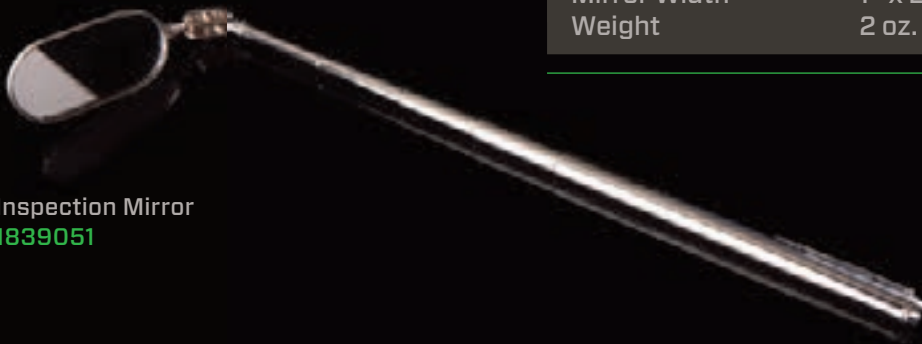
Offset Service Wrench
1839043

INSPECTION MIRROR

Leaks can't hide anymore. With a handle that extends from 7-3/4" to 21-1/2", this telescoping mirror truly does go above and beyond.

Product Specifications

Item Number	1839051
Product Description	IMIR
Dimensions	
Length	7-3/4" to 21-1/2"
Mirror Width	1" x 2"
Weight	2 oz.



Inspection Mirror
1839051

DEBURRING TOOLS

Whether they're inside or outside, copper or plastic, Hilmar Deburring Tools can smooth things over. With steel blades, the standard Deburrer works flawlessly on OD tubing from 1/4" to 1-5/8". And our Pocket Size Deburring Tool lets you put your silky-smooth signature on even the smallest pieces of tubing.

Product Specifications

Item Numbers	1839052	1891258
Product Descriptions	DBUR	DBURPS
Sizes	1/4" to 1-5/8"	1/4" and up
Dimensions		
Length	2-3/8"	5-1/2"
Width	2-1/8"	3/8"
Height	2-1/8"	3/8"
Weight	2 oz.	7 oz.



Deburrer, Pocket Size Deburring Tool
1839052, 1891258

FIN STRAIGHTENING TOOL

A condenser should work as efficiently as you. With two wheels that offer 12 sizes, this tool makes it easy to remove debris and straighten fins.



Rugged & Durable
A plastic handle and wheels increase life and durability.



Quick Identification
Easy-to-read size markings make identification simple.



Compact Design
Wheels can be removed after use for easy storage.



Simple Setup
Quickly change between two wheels with six different sizes each.

Product Specifications

Item Number	1891255
Product Description	FST
Sizes	8, 9, 10, 10.5, 11, 12, 13, 14, 15, 18, 20, 22 Fins Per Inch
Dimensions	
Length	4-1/2"
Width	7/8"
Height	3-1/8"
Weight	5 oz.



Fin Straightening Tool
1891255

TUBE PREP BRUSHES

You do the job right or you don't do it at all. This tool lets you easily remove loose copper and other debris from joints so you can solder and braze with the best of them.



Rugged & Durable
High-carbon steel bristles and a plastic handle increase life and durability.



Quick Identification
Easy-to-read size markings make identification simple.

Product Specifications

Item Numbers	1891474	1891475	1891462
Product Descriptions	TPB12	TPB34	TPB1
Sizes	1/2"	3/4"	1"
Dimensions			
Length	6-3/8"	6-3/8"	6-3/8"
Width	1-1/4"	1-1/4"	1-1/4"
Height	1/2"	3/4"	1"
Weight	1 oz.	1 oz.	1 oz.



1/2", 3/4" and 1"
Tube Prep Brushes
1891474, 1891475, 1891462

IN THE DARK, DIRTY AND DOWNRIGHT CRAMPED, YOU GOTTA KEEP IT TOGETHER.



We're not just revolutionizing your HVAC/R equipment, we're also retooling the way you store it. We offer a wide array of smart storage and transport solutions for all your valuable tools. It's another way we help you conquer from one job to the next. And keep your cool no matter the climate.

HVAC/R TOTE

The hilmer HVAC/R Tote is your go-to tool storage and transport solution. It includes 27 exterior and interior pockets, 18 bands and clips for your keys so you can store your tools safely and find them quickly.



Keep Organized

27 pockets and 18 bands.
14 exterior pockets and
13 interior pockets.



Rugged & Durable

Designed to last with water-resistant bottom and reinforced rivets.



Secure Storage

Stow your meter away safely in the padded pocket in the interior of the tote. Use the tape measure clip, key clip and tape holder loop to secure the rest of the items you need.



Helps With The Heavy Lifting

This tote has room for multiple tools and is tested up to 50 lbs. The padded shoulder strap makes carrying more comfortable.

Product Specifications

Item Number	1839078
Product Description	HT
Number of Pockets	
Interior	13
Exterior	14
Extra Features	Key Clip; Tape Loop; Shoulder Strap
Dimensions	
Length	7-1/2"
Width	7-1/2"
Height	13"
Weight	3.3 lbs.



HVAC/R Tote
1839078

BACKPACK TOOL BAG

The hilmor Backpack Tool Bag is your jobsite sidekick with 19 exterior and interior pockets. Its sturdy rubber, water-resistant bottom means rain or shine, the contents inside won't be damaged. And while it's spacious enough to hold up to 50 lbs., padded shoulder straps and a back air vent make hauling it a little more comfortable and leave your hands free to safely climb a ladder.



Secure Storage

Stow your meter away safely in either of the two padded zipper pockets on the exterior sides of the tote.



Superior Versatility

Hang your manifold from the bag's metal loop for easy transport to the jobsite.



Helps With The Heavy Lifting

This bag has room for multiple tools and is tested up to 50 lbs. The padded shoulder straps and air vent back make carrying more comfortable.

Product Specifications

Item Number	1839080
Product Description	BKB
Number of Pockets	
Interior	11
Exterior	8

Extra Features

Clear Vinyl ID Window Pocket; Shoulder Strap; Double-grip Handles; Steel "U" Ring; Airflow Ventilator Pads

Dimensions

Length	6"
Width	14"
Height	16"
Weight	4.5 lbs.



19 exterior and interior pockets allow you to store tools safely and find them quickly.



Backpack Tool Bag
1839080



A metal loop gives you an easy way to transport your manifold.



Two padded, zippered side pockets provide safe storage for your meter.

TOOL CENTER BAG

The hilmer Tool Center Bag is your total tool storage solution. It includes 24 exterior and interior pockets and three zippered pouches so you can store your tools safely and find them quickly.



Keep Organized

24 pockets and three zippered pouches.



Secure Storage

Stow your meter away safely in either of the two padded pockets on the exterior sides of the tote.



Helps With The Heavy Lifting

This bag has room for multiple tools and is tested up to 50 lbs. The padded shoulder strap makes carrying more comfortable.



Rugged & Durable

Designed to last with a hard plastic, water-resistant bottom and a padded aluminum carrying handle.

Product Specifications

Item Number 1839079

Product Description TCB

Number of Pockets

Interior 13; 18 Tool Loops

Exterior 11

Extra Features

Clear Vinyl ID Window Pocket; Shoulder Strap; Cover Flap

Dimensions

Length 13-1/2"

Width 8-1/2"

Height 9"

Weight 4.5 lbs.



Three zippered pouches and two padded side pockets provide safe storage for your meter.



Tool Center Bag
1839079

HVAC/R REFRIGERANT TANK & UTILITY BACKPACK

Give yourself a hand with the Utility Backpack. Comfortably carry Refrigerant or Recovery tanks, or up to 50 pounds of whatever the job calls for.



Superior Versatility

Can carry up to 30 lb. refrigerant or recovery cylinders and serves as a knapsack to transport other materials to and from the jobsite.



Secure Transport

A drawstring with a cord lock and flap with latch securely hold your materials in place during transport.



Stay Organized

8-carabiner loops, a see-through pocket to display OSHA refrigerant labels and a pocket keep you together.



Helps With The Heavy Lifting

Padded shoulder straps and back pads allow you to comfortably carry up to 50 lbs.



Rugged & Durable

Designed to last with heavy duty nylon thread and puncture and abrasion resistant nylon fabric.

Product Specifications

Item Number	1891628
Product Description	HVACBP
Extra Features	
External Pocket; See Through Pocket; 8-Carabiner Loops	
Dimensions	
Length	20"
Width	12"
Height	12"
Weight	2.4 lbs.



Designed to carry 30 lb. Refrigerant and Recovery cylinders.



Serves as a knapsack to transport other materials.



HVAC/R CARRYING STRAP

Let this Strap do some of your lifting. Clip on and carry refrigerant or recovery tanks comfortably and easily.



Rugged & Durable

Heavy duty nylon fabric and slip-resistant padding helps prevent the strap from sliding.



Less Wasted Time

Steel carabiners easily clip to carry refrigerant or recovery cylinders and other essential materials to save trips and give you an extra arm.



Helps with the Heavy Lifting

Shoulder strap is designed and tested to hold up to 50 lbs.

Product Specifications

Item Number	1891625
Product Description	HVACSCS
Dimensions	
Length	50-1/2"
Width	3-3/4"
Height	1/2"
Weight	14 oz.



Easily hooks to refrigerant and recovery cylinders.



ZIPPER POUCH

The hilmor Zipper Pouch is your best bet for keeping track of all the small stuff on the jobsite – from small tools and accessories to receipts and other paperwork.



Keep Organized

The hilmor Zipper Pouch can conveniently fit many hilmor tools, including the Punch Swage Set or Dual Readout Thermometer with two Thermocouple Clamps.



Rugged & Durable

Designed with an inner liner to protect from water damage and a rivet on the outside so it can be clipped where it's needed.

Product Specifications

Item Number	1839081
Product Description	ZP
Number of Pockets Interior	1
Dimensions	
Length	10-1/2"
Width	1/8"
Height	7"
Weight	3 oz.



Zipper Pouch
1839081

MANIFOLD COVER

The hilmor Manifold Cover is the ultimate shield to keep your manifold out of harm's way. The padded cover protects the manifold from any falls and scrapes while still allowing it to be hung for daily use.



Secure Storage

Keep your manifold out of harm's way with a padded protective cover that still allows you to hang it up for daily use.



Keep Organized

Use the two mesh pockets on the sides for spare parts and accessories.

Product Specifications

Item Number	1839050
Product Description	MC
Number of Pockets Exterior	2
Dimensions	
Length	9-1/2"
Width	4"
Height	9"
Weight	6 oz.



Manifold Cover
1839050

HVAC/R GENERAL PURPOSE GLOVES

No matter what the task get a grip and protect your hands with these ruggedly reinforced gloves made to take on any job.



Rugged & Durable

Stands up to HVAC/R applications with a breathable-fabric design, featuring a reinforced thumb, palm and fingertips to increase life and durability.



Extra Comfort

A wrist strap easily adjusts for comfort while a form-fitting design provides fit and flexibility.

Product Specifications

Item Numbers	1891606	1891607	1891624
Product Descriptions	GLOVEHVACM	GLOVEHVACL	GLOVEHVACXL
Sizes	MED	LG	XL
Dimensions			
Length	9-3/4"	9-7/8"	10"
Width	4-3/8"	4-7/16"	4-5/8"
Height	1/2"	1/2"	1/2"
Weight	5 oz.	5 oz.	5 oz.



HVAC/R General Purpose Gloves, XL
1891624

HVAC/R SHEET METAL GLOVES

We don't need to tell you sheet metal can be sharp. Shield your hands from cuts with these gloves that are as tough as they are comfortable.



Rugged & Durable

Stands up to sheet metal with cut-resistant fabric featuring a reinforced thumb, palm and fingertips to increase life and durability.



Extra Comfort

A wrist strap easily adjusts for comfort while a form-fitting design provides fit and flexibility.

Product Specifications

Item Numbers	1891463	1891469	1891592
Product Descriptions	GLOVESMM	GLOVESML	GLOVESMXL
Sizes	MED	LG	XL
Dimensions			
Length	9-3/4"	9-7/8"	10"
Width	4-3/8"	4-7/16"	4-5/8"
Height	1/2"	1/2"	1/2"
Weight	5 oz.	5 oz.	5 oz.



HVAC/R Sheet Metal Gloves, XL
1891592

THESE TOOLS ARE BUILT FOR HVAC/R. JUST LIKE YOU.



hilmar's HVAC/R Starter Kit includes some of the most revolutionary new tools on the market. Tools to help you handle superheat and subcool with no sweat. Tools to help you flare and swage tubes without needing a third arm. All with the goal of helping you get in, get out and get on to the next job. Not to mention, get your foot in the door.

HVAC/R STARTER KIT

Get started on the right foot with a few of hilmor's most forward-thinking tools.

Dual Readout Thermometer 1839106

hilmor's Dual Readout Thermometer is the industry's first to offer two digital readouts to help simplify the calculation of superheat and subcool.

2-Valve Aluminum Manifold 1839134

This ruggedly durable Aluminum Manifold features a forged aluminum body and high-impact gauge boots.

60" Hose Set of 3 1839153

Our hoses are bulked up with an extra abrasion-resistant layer and designed to work with the newest high-pressure refrigerants.

Quick-Engage Flare and Swage 1838947

Finally, a flaring tool that doesn't require a third arm. Two hands are all it takes to flare or swage in seconds.

Tri-Tube Bender 1839027

From start to final bend, the hilmor Tri-Tube Bender has you covered. Color-coded sizing makes it simple to bend 1/4", 3/8" and 1/2" tubes.

Service Wrenches 1839042, 1839046

Smart features that save your knuckles and your time. Plus, a Hex Key Adapter for liquid- and suction-based valves.

Product Specifications

Item Number	1890995
Product Description	KITHVACR
Dimensions	
Length	20"
Width	15-1/4"
Height	16-1/2"
Weight	21.7 lbs.

Deburrer 1839052

Whether it's inside or outside, copper or plastic, the hilmor Deburrer can smooth things over, including OD tubing from 1/4" to 1-5/8".

Folding Hex Key Set 1839048

Get full socket contact without our slip-resistant Folding Hex Key Set. Sizes include 5/64" to 1/4".

Inspection Mirror 1839051

Leaks can't hide anymore. With a handle that extends from 7-3/4" to 21-1/2", this telescoping mirror goes above and beyond.

3" Quick-Change Magnetic Nut Driver 1839054

Don't get driven nuts. Just drive them. This Nut Driver lets you quickly switch between 1/4" and 5/16", the two most common sizes.

9 in 1 Multi-Tool 1839053

Tackle any on-the-job challenge with square, hex and Phillips bits. Not to mention a handy valve core remover.

Backpack Tool Bag 1839080

The hilmor Backpack Tool Bag includes 19 exterior and interior pockets. Plus, its sturdy, water-resistant bottom holds up in any climate.



HVAC/R Starter Kit
1890995

LIMITED WARRANTY

At hilmor, we have put the highest priority on thoughtful product design and manufacturing quality. That is why we guarantee our products to be free of material and workmanship defects for a period of time from purchase (see chart below). We get the tough conditions in which you work and have designed products to stand up to those challenges. Unfortunately, this warranty does not apply to product that has been damaged as a result of improper maintenance, accident or other misuse, or which fails to operate due to normal wear and tear.

Product Line	Time Period from Purchase
Electronics	Limited Three years
Manifold Bar	Limited Lifetime
Analog Gauges	Limited One year
Hoses	Limited One year
Bending Tools	Limited Lifetime
Flaring Tools	Limited Lifetime
Swaging Tools	Limited Lifetime
Tubing Cutters	Limited Lifetime
Sheet Metal & Duct Tools	Limited Lifetime
Driving Tools	Limited Lifetime
Pliers, Wrenches and Wire Strippers	Limited Lifetime
Utility Knives	Limited Lifetime
Service Tools	Limited Lifetime
Tool Storage Bags	Limited Lifetime
Power Tool Accessories, Deburring Tools, Gloves, Drill Bits	
Tube Brushes, Cutting Wheels and Blades	Limited 90 Days

All products subject to warranty claims should be returned to the place of purchase along with proof of purchase showing the date of purchase. The distributor from whom the product was purchased will contact hilmor for next steps, which could include field scrap or return to the factory for analysis, and work with you on a repair, replacement or credit.

Please contact hilmor Technical Services for general technical questions related to products or this warranty policy: **1-800-642-0010**.

HILMOR MAKES NO OTHER WARRANTIES, EXPRESS OR IMPLIED, CONCERNING THE PRODUCT OR THE MERCHANTABILITY OR FITNESS THEREOF FOR ANY PURPOSE. IN NO EVENT SHALL HILMOR (WHICH INCLUDES NEWELL RUBBERMAID, INC. AND ITS AFFILIATES, SUCCESSORS AND ASSIGNS) BE LIABLE FOR INCIDENTAL, CONSEQUENTIAL OR PUNITIVE DAMAGES (OR LOST PROFITS), REGARDLESS OF THE NATURE OF THE CLAIM.

PRESSURE – TEMPERATURE CHART

ALL PRESSURES SHOWN ARE IN PSIG; RED PRINT = VACUUM (INCHES OF MERCURY)

F	R-12	R-22	R-134A	R-404A		R-407C		R-410A	R-502	C
				Vapor	Liquid	Vapor	Liquid			
-40	11	1	15	5	4	3	4	12	4	-40
-35	8	3	13	8	7	5	1	15	7	-37
-30	6	5	10	11	10	8	2	19	9	-34
-25	2	7	7	14	13	11	4	23	12	-32
-20	1	10	4	17	16	14	7	27	15	-29
-15	2	13	1	21	19	18	9	32	19	-26
-10	5	17	2	25	23	21	13	37	23	-23
-5	7	20	4	29	28	25	16	43	27	-21
0	9	24	7	34	32	30	20	49	31	-18
5	12	28	9	39	37	35	24	55	36	-15
10	15	33	12	45	42	40	28	62	41	-12
15	18	38	15	51	48	46	33	70	47	-9
20	21	43	18	57	55	52	38	78	52	-7
25	25	49	22	64	61	58	44	87	59	-4
30	29	55	26	71	68	65	50	97	66	-1
35	33	62	30	79	76	73	56	107	73	2
40	37	69	35	97	84	81	63	118	81	4
45	42	76	40	106	93	89	71	130	89	7
50	47	84	46	116	103	98	79	142	97	10
55	52	93	51	127	113	108	87	155	107	13
60	58	102	58	138	123	118	97	170	116	16
65	64	111	64	150	135	129	106	185	127	18
70	70	121	71	163	147	141	117	201	138	21
75	77	132	79	176	159	153	128	217	149	24
80	84	144	87	190	173	166	140	235	161	27
85	92	156	95	205	187	180	153	254	174	29
90	100	168	104	221	202	195	166	274	187	32
95	108	182	114	237	218	210	180	295	201	35
100	117	196	124	255	234	226	195	317	216	38
105	127	211	135	273	252	243	210	340	232	41
110	136	226	147	292	270	261	226	365	248	43
115	147	243	159	313	289	280	243	391	265	46
120	158	260	171	318	310	300	261	418	283	49
125	169	278	185	339	331	321	280	446	301	52
130	181	297	199	362	353	342	300	476	321	54
135	194	317	214	385	377	365	321	507	341	57
140	207	337	229	410	401	389	342	539	363	60
145	220	359	246	436	426	412	365	573	391	63
150	234	382	263	463	453	438	389	608	415	66

hilmor[®]

RETOOL + CONQUER[™]



301 Chestnut Street
East Longmeadow, MA 01028
1-800-628-8810
hilmor.com

© 1/2015 hilmor, Newell Rubbermaid

H1026C F140061