

---

# REPLACEMENT PARTS MANUAL

---

## WALL-MOUNT HEATER PACKAGE

### Models:

EHWV03-A05 EHWV03-A05L  
EHWV03-A10 EHWV03-A10L  
EHWV03-B06 EHWV03-B06L  
EHWV03-B09 EHWV03-B09L  
  
EHWV05-A10 EHWV05-A10L  
EHWV05-A20 EHWV05-A20L  
EHWV05-B09 EHWV05-B09L  
EHWV05-B18 EHWV05-B18L  
  
EHWV06-B09 EHWV06-B09L  
EHWV06-B18 EHWV06-B18L

---

### Contents

<u>Description</u>	<u>Page</u>
Heater Package Assembly	
♦ Layout View – A Versions.....	1
♦ Layout View – B Versions.....	2
♦ Usage List – A & B Versions .....	3

### General Notes

- Revised and/or additional pages may be issued from time to time.
- A complete and current manual consists of pages shown in the following contents section.

### Important

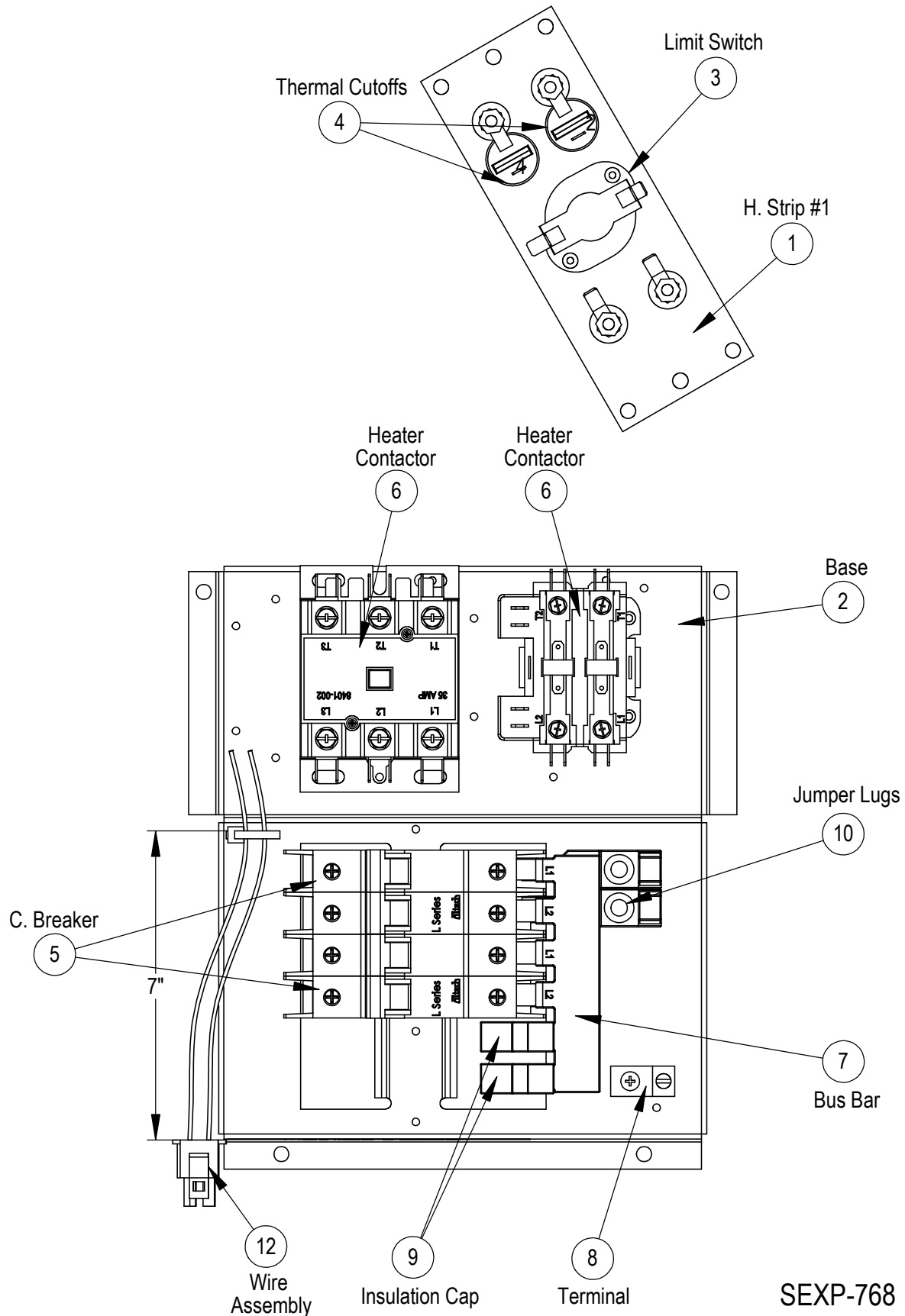
- Contact the installing and/or local Bard distributor for all parts requirements. Make sure to have the complete model and serial number available from the unit rating plates.



Bard Manufacturing Company, Inc.  
Bryan, Ohio 43506  
[www.bardhvac.com](http://www.bardhvac.com)

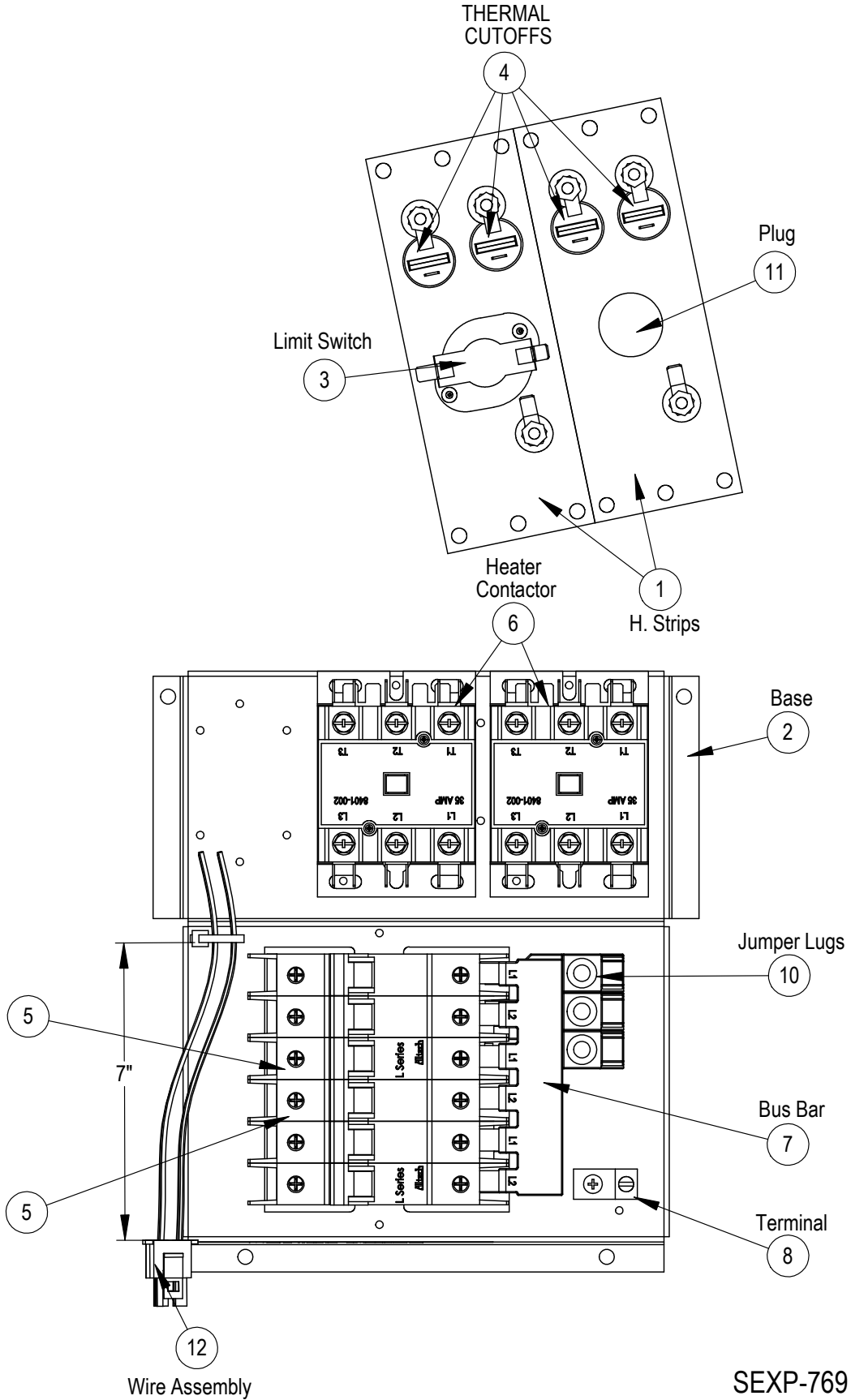
Manual: 2110-624  
Supersedes: **NEW**  
Date: 1-16-15

# HEATER PACKAGES - A VERSIONS



SEXP-768

# HEATER PACKAGES - B VERSIONS



SEXP-769

# HEATER PACKAGES – A & B VERSIONS

Drawing No.	Part No.	Description	EHW03-A05	EHW03-A10	EHW03-B06	EHW03-B09	EHW05-A10	EHW05-A20	EHW05-B09	EHW05-B18	EHW06-B09	EHW06-B18	EHW03-A05L	EHW03-A10L	EHW03-B06L	EHW03-B09L	EHW05-A10L	EHW05-A20L	EHW05-B09L	EHW05-B18L	EHW06-B09L	EHW06-B18L	
1	8604-048	HEAT STRIP 9KW 240V 3 TERM L			X			X	2	X	2				X				X	2	X	2	
1	8604-049	HEAT STRIP 6KW 240V 3 TERM L	X		X								X		X								
1	8604-089	HEAT STRIP 5KW 240V 2 TERM L	X										X										
1	8604-091	HEAT STRIP 10KW 240V 4 TERM L					X	2									X	2					
1	8604-095	HEAT STRIP 10KW 240V 4 TERM L		X									X										
2	127X484	HEATER CONTROL BASE	X	X	X	X	X	X	X	X	X	X	X	X	X	X	X	X	X	X	X	X	
2	127Y484	HEATER CONTROL BASE	X	X	X	X	X	X	X	X	X	X	X	X	X	X	X	X	X	X	X	X	
3	8402-028	LIMIT CONTROL 150-125	X	X									X										
3	8402-065	LIMIT CONTROL L160-4.0			X	X							X										
3	8402-074	LIMIT CONTROL L170-7.0					X		X								X						
3	8402-075	LIMIT CONTROL L170-7.0 2-POLE					X		X								X			X		X	
4	8402-091	THERMAL CUTOFF G5AM0400098	X										X										
4	8402-092	THERMAL CUTOFF G5AM0400104			2	2			2	4	2	4				2	2			2	4	2	4
4	8402-093	THERMAL CUTOFF G5AM0400110					2	4									2	4					
4	8402-096	THERMAL CUTOFF G5AM0400117		2										2									
5	8615-080	CIRCUIT BREAKER 30A 2-POLE	X	X			2	3					X	X									
5	8615-082	CIRCUIT BREAKER 60A 2-POLE	X	X									X	X			2	3					
5	8615-083	CIRCUIT BREAKER 30A 3-POLE							X	X										X	X		
5	8615-084	CIRCUIT BREAKER 40A 3-POLE			X										X								
5	8615-085	CIRCUIT BREAKER 50A 3-POLE				X										X							
5	8615-086	CIRCUIT BREAKER 60A 3-POLE							X	X	X	2							X	X	X	2	
6	8401-002	CONTACTOR 3-POLE 25 AMP			X	X	X		X	2	X	2			X	X	X	X	X	X	2	X	2
6	8401-006	CONTACTOR 2-POLE 20 AMP	X	2			X						X	2			X						
6	8401-040	CONTACTOR 3-POLE 50AMP					2											2					
7	8615-087	3 CIRCUIT BUS BAR/2-POLE		X			X	X					X				X	X					
7	8615-090	2 CIRCUIT BUS BAR/3-POLE							X	X	X						X	X		X	X	X	
8	8611-006	GROUND TERMINAL		X			X	X	X	X	X		X				X	X		X	X	X	
9	8615-089	JUMPER BAR COVER		X			X						X				X						
10	8615-088	JUMPER BAR MAIN LUGS		2			2	2		3	3	3		2			2	2		3	3	3	
11	6051-005	PLUG 1-1/4"					X	X	X	X	X						X	X				X	
12	3000-972	WIRE ASSEMBLY	X	X	X	X							X	X	X	X							
12	3000-972	WIRE ASSEMBLY					X		X	X	X						X			X	X	X	
12	3000-972	WIRE ASSEMBLY					X														X		
12	3000-972	WIRE ASSEMBLY					X	X									X		X				
NS	4097-195	WIRING DIAGRAM	X										X										
NS	4097-196	WIRING DIAGRAM		X										X									
NS	4097-197	WIRING DIAGRAM				X											X						
NS	4097-198	WIRING DIAGRAM					2											X					
NS	4097-248	WIRING DIAGRAM			X	X									X	X							
NS	4097-249	WIRING DIAGRAM						X											X				
NS	4097-250	WIRING DIAGRAM							X											X			
NS	4097-251	WIRING DIAGRAM								X											X		
NS	4097-252	WIRING DIAGRAM									X											X	

NS – Not Shown