



Prefabricated Sheet Metal Ducts & Fittings

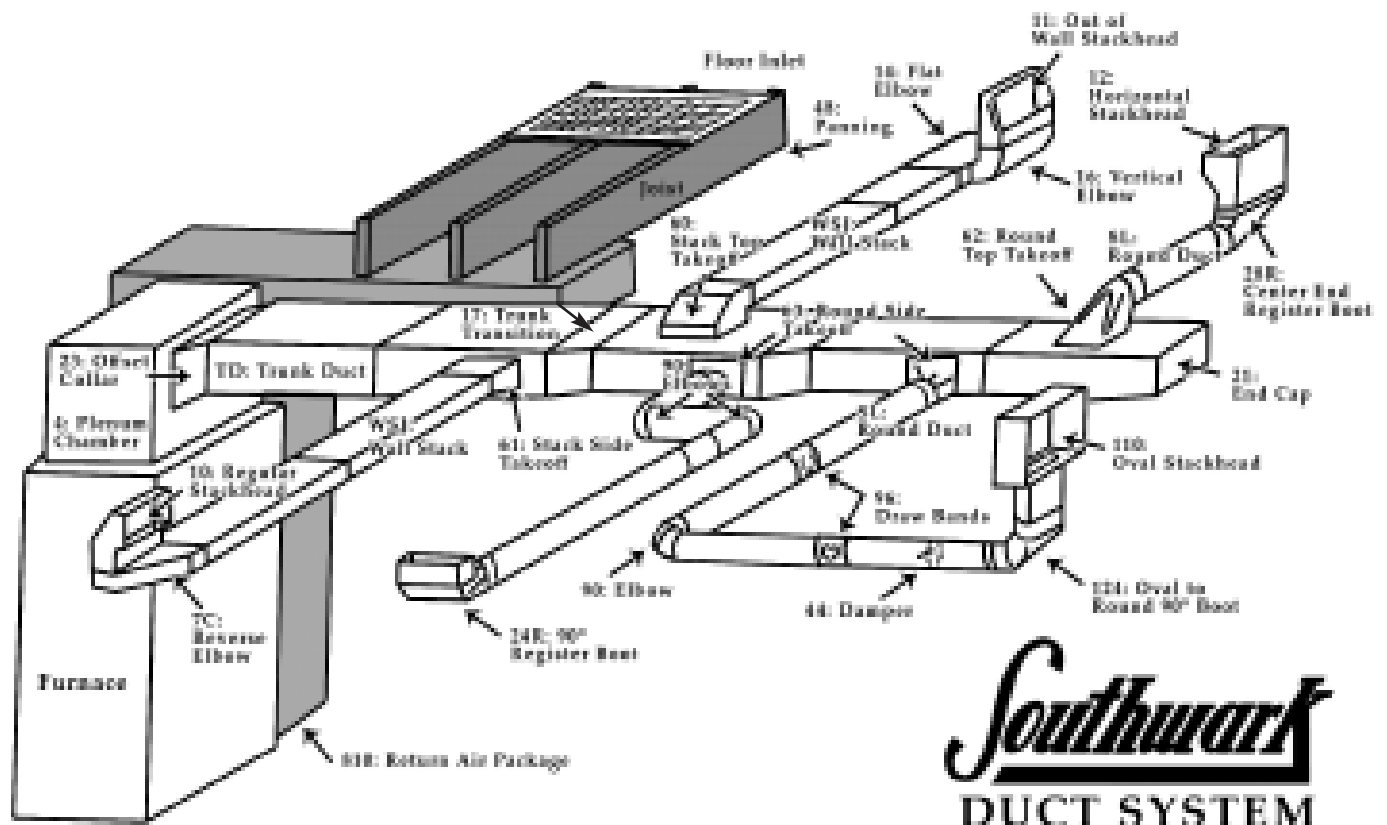
Philadelphia Division

2800 Red Lion Road • Philadelphia, PA 19114
(800) 523-1052 • (800) 722-2076

Southwark Metal Mfg. Co. Philadelphia Division

PRODUCT CATEGORY INDEX

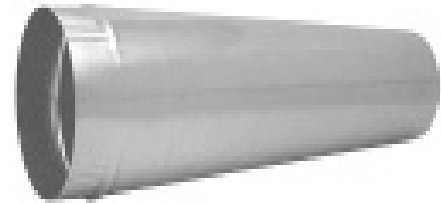
| PAGE | DESCRIPTION |
|-------|--|
| 4 | Snaplock Pipe |
| 5 | Elbows, Angles, & Register Boots |
| 6-7 | Trunk Duct & Fittings |
| 8-9 | Trunk Duct Fittings & Installation Accessories |
| 10-11 | Oval Pipe & Fittings |
| 12-13 | Wall Stack & Fittings |
| 14-15 | Sheet Metal & Fiberglass Takeoffs |
| 16 | Sheet Metal & Fiberglass Collars |
| 17 | Air-Tite Takeoffs |
| 18-19 | Accessories |
| 20-21 | Ceiling Outlets & Register Boxes |
| 22 | Venting Products |
| 23 | Black Pipe, Elbows, & Accessories |



Southwark
DUCT SYSTEM

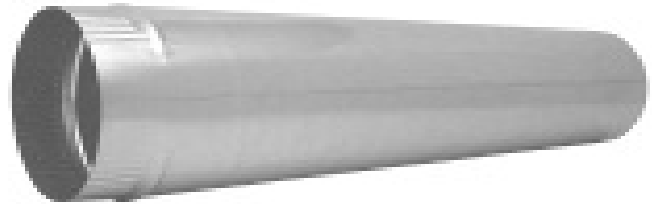
PRODUCT NUMBER INDEX

| Item No. | Product Name | Page | Item No. | Product Name | Page | Item No. | Product Name | Page |
|----------|--------------------------------|------|----------|---|------|----------|-----------------------------------|------|
| 3 | Fiberglass Extension | 9 | 77WF | Diffuser Funnel w/Flange | 21 | 812B | Cold Air Boot | 8 |
| 4 | Plenum Chamber | 8 | 78 | Wye Branch | 19 | 813 | Return Air Package | 8 |
| 5 | 12" Duct Hanger | 9 | 83PC | Branch Connector | 19 | 813B | Cold Air Boot | 8 |
| 6 | S-Cleat | 9 | 84ST | Ductboard Collar | 16 | 814 | Return Air Package | 8 |
| 8 | Drive Cleat | 9 | 84STWD | Ductboard Collar w/Damper | 16 | 814B | Cold Air Boot | 8 |
| 13 | Flat Trunk 45° Angle | 6 | 85 | Insul.Ceiling Box Top Outlet | 20 | 815 | Return Air Package | 8 |
| 14 | Flat Trunk 90° Elbow | 6 | 85S | Insul.Ceiling Box Side Outlet | 20 | 815B | Cold Air Boot | 8 |
| 14TT | Trunk Tee | 7 | 86SC | Sleeve Connector | 19 | 816 | Return Air Package | 8 |
| 15 | Vertical Trunk 45° Angle | 6 | 87 | Lever Takeoff Metal | 14 | 816B | Cold Air Boot | 8 |
| 16 | Vertical Trunk 90° Elbow | 6 | 90 | 90° Adjustable Elbow | 5 | 817 | Return Air Package | 8 |
| 17 | Trunk Transition | 6 | 90 | Floor Register Box- 6" Deep | 21 | 817B | Cold Air Boot | 8 |
| 17CR | Adjustable Register Boot | 5 | 91 | Floor Reg. Box- 11" Deep | 21 | AT62 | Air-Tite Top Takeoff | 17 |
| 17TT | Trunk Tee | 7 | 92 | Funnel Register Box | 21 | AT62WD | Air-Tite Top w/Damper | 17 |
| 18 | Connector- Plenum to Trunk | 7 | 93 | Elbow Draft Vent | 18 | AT63 | Air-Tite Side Takeoff | 17 |
| 19RC | Register Collar | 21 | 94 | Horizontal Draft Vent | 18 | AT63A | Air-Tite Adj. Takeoff | 17 |
| 20 | Trunk Straight Collar | 6 | 95 | Vertical Draft Vent | 18 | AT63WD | Air-Tite Side w/Damper | 17 |
| 21 | Trunk End Cap | 7 | 96 | Drawband - Gear Clamp | 19 | ATD | Air-Tite w/Damper | 17 |
| 23 | Trunk Offset Collar | 6 | 97 | Flat Collar | 16 | ATDBM | Air-Tite Bellmouth w/Damper | 17 |
| 23AT | Trunk Transition Collar | 7 | 97FG | Spin Collar Fiberglass | 16 | ATDRP | Air-Tite Rd Pipe w/Damper | 17 |
| 24 | 90° Stack Boot | 12 | 97FGWD | Spin Collar w/Damper Fiberglass | 16 | ATHE | Air-Tite High Efficiency | 17 |
| 24R | 90° Register Boot | 5 | 97LS | Long Style Flat Collar | 16 | ATHEWD | Air-Tite High Efficiency w/Damper | 17 |
| 24RWE | 90° Basement Boot | 5 | 97LSWD | Flat Collar w/Damper | 16 | ATS | Air-Tite w/Scoop | 17 |
| 26 | Angle Stack Boot | 12 | 98 | Spin Collar w/Scoop Fiberglass | 16 | ATSD | Air-Tite w/Scoop & Damper | 17 |
| 26R | 45° Register Boot | 5 | 98WD | Spin Collar w/Scoop & Damper Fiberglass | 16 | ATT | Air-Tite Plain | 17 |
| 27 | Straight Stack Boot | 12 | 99 | Chimney Cap | 18 | ATTBM | Air-Tite Bellmouth | 17 |
| 27R | Straight Register Boot | 5 | 99LD | Chimney Cap- Lo Draft | 18 | ATTRP | Air-Tite Round Pipe | 17 |
| 28 | End Stack Boot | 12 | 100 | Oval Pipe - 100" | 10 | ATTRP45 | Air-Tite 45° Saddle | 17 |
| 28R | End Register Boot | 5 | 106 | Rd to Oval Reverse Boot | 10 | BP12 | Black Pipe- 12" | 23 |
| 28RL | End Register Boot-Left | 5 | 110 | Oval Stackhead | 10 | BP24 | Black Pipe- 24" | 23 |
| 28RR | End Register Boot-Right | 5 | 111 | Register Outlet | 10 | BP36 | Black Pipe- 36" | 23 |
| 29RO | Offset Register Boot | 5 | 113 | Flat Oval 45° Angle | 10 | BP54 | Black Tee Joint | 23 |
| 31 | Return Air Frame | 9 | 114 | Flat Oval 90° Elbow | 10 | BP55 | Black Tee Cap | 23 |
| 31PF | Plaster Frame | 21 | 115 | Vertical Oval 45° Angle | 11 | BP58 | Black Reducer- 3PC | 23 |
| 34PLF | Adj. Takeoff Fiberglass | 15 | 116 | Vertical Oval 90° Elbow | 11 | BP90 | Black 90° Elbow | 23 |
| 35 | Trunk Reducer | 9 | 117 | Flue Thimble | 18 | BP96 | Black Drawband | 23 |
| 35A | Trunk Reducer | 9 | 120SC | Snap Collar - Sheet Metal | 16 | BP127 | Black Oval to Rd Adapter | 23 |
| 36 | Fresh Air Intake | 19 | 122SC | Snap Collar - Fiberglass | 16 | BPC | Black Pipe Collar | 23 |
| 37 | Rigid S-Cleat | 9 | 124 | Rd to Oval 90° Boot | 11 | BPCHAD | Black Chimney Adapter | 23 |
| 39 | Galvanized Vent Hood | 19 | 124R | Oval 90° Register Boot | 10 | BPCON | Black Connector | 23 |
| 39AL | Alum Wall Cap w/Damper | 22 | 127 | Rd to Oval Straight Boot | 11 | BPTC | Black Trim Collar | 23 |
| 39GP | Gray Plastic Wall Cap | 22 | 127R | Oval Straight Reg. Boot | 10 | CAF | Cold Air Frame | 9 |
| 39WP | White Plastic Wall Cap | 22 | 128 | Oval to Oval Reverse Boot | 11 | CID | Cast Iron Damper | 23 |
| 40 | Damper Section | 16 | 128R | Oval End Register Boot | 10 | EV141 | Eave Vent | 22 |
| 42 | Trunk Volume Damper | 7 | 132 | 'A' Adapter | 13 | HT15 | Rd to Rd 1/2 Tab Takeoff Metal | 14 |
| 44 | Round Damper | 18 | 133 | 'B' Adapter | 13 | MF | Aluminum Flexible Duct | 22 |
| 44S | Rd Damper- Fixed Hardware | 19 | 137 | Drain Pan | 21 | MR | Mounting Rails | 20 |
| 45 | 45° Adjustable Angle | 5 | 140 | Adjustable Roof Flashing | 19 | PC | Plenum Corner | 9 |
| 47 | Connector- Furnace to Plenum | 7 | 141 | Tall Cone Flashing | 19 | RV51 | Alum Roof Cap-8" opening | 22 |
| 48 | Panning Material | 9 | 142 | Storm Collar | 19 | SAL | Aluminum Transition Duct | 22 |
| 49P | Adjustable Plenum Panel | 8 | 150 | Oval Stackhead w/Collar | 10 | S5 | Pivot Takeoff Metal | 15 |
| 49T | Adjustable Plenum Top | 8 | 156 | Spin Collar | 16 | S75 | Drawband - Snap | 19 |
| 50 | Wye - 15" Long | 18 | 156D | Spin Collar w/Damper | 16 | SAE | Aluminum Elbow | 22 |
| 51 | Wye - 24" Long | 18 | 156S | Spin Collar w/Scoop | 16 | SAP | Aluminum Pipe | 22 |
| 51F | Ceiling Box | 20 | 156SD | Spin Collar w/Scoop & Damper | 16 | SB30 | Return Air Support Box | 9 |
| 52 | Flue Wye | 18 | 160 | Oval Pipe - 60" | 10 | SB38 | Return Air Support Box | 9 |
| 53 | Tee- 24" Long | 18 | 162 | Oval Top Takeoff | 11 | SH | White Flexible Vinyl Hose | 22 |
| 54 | Tee- 15" Long | 18 | 163 | Oval Side Takeoff | 11 | SL24 | Round Pipe-24" | 4 |
| 54SW | Swivel Tee | 18 | 170 | Return Air Pan | 21 | SL60 | Round Pipe-60" | 4 |
| 55 | Tee Cap | 19 | 177 | Ceiling Outlet | 20 | SL120 | Round Pipe-120" | 4 |
| 58 | Reducer- 3PC | 18 | 177S | Ceiling Side Outlet | 20 | SPC | Pipe Clamp | 22 |
| 58WF | Diffuser Outlet w/Flange | 21 | 199 | H-Vent | 18 | SVH | Aluminum Vent Hood | 22 |
| 59F | Ceiling Box | 20 | 201VH | Aluminum Wall Vent | 22 | SVHBP | Brown Plastic Vent Hood | 22 |
| 62 | Top Takeoff Metal | 14 | 201VHP | White Plastic Vent | 22 | SVHWP | White Plastic Vent Hood | 22 |
| 62FG | Top Takeoff Fiberglass | 14 | 207 | Quick Tee 90° | 19 | TD | Trunk Duct | 6 |
| 63 | Side Takeoff Metal | 14 | 208 | Quick Y 45° | 19 | WSJ | Wallstack | 12 |
| 63A | Adjustable Takeoff Metal | 15 | 220EC | Eave Vent | 22 | WS7C | Center Reverse Stack Elbow | 13 |
| 63AFG | Adj. Takeoff Fiberglass | 15 | 239 | Alum Roof Cap w/Damper | 22 | WS9 | Double Stackhead | 12 |
| 63FG | Side Takeoff Fiberglass | 15 | 240 | Alum Roof Cap w/Damper | 22 | WS10 | Stackhead | 12 |
| 64 | Double Top Takeoff Metal | 15 | 241 | Alum Roof Cap w/Damper | 22 | WS10X | Stackhead w/Ears | 12 |
| 65 | Rd to Rd Adj. Takeoff Metal | 14 | 277 | Ceiling Outlet No Flange | 20 | WS11 | Projection Stackhead | 12 |
| 66WF | Ceiling Diffuser Outlet | 21 | 355 | Oval Straight Register Box | 11 | WS12 | Horizontal Stackhead | 12 |
| 67 | Basement Diffuser Box | 20 | 360 | Oval Angle Register Box | 11 | WS13 | Flat Stack 45° Angle | 13 |
| 70 | Register Takeoff | 20 | 390WP | White Louver Hood w/Tail | 22 | WS14 | Flat Stack 90° Elbow | 13 |
| 71 | Register Tee | 20 | 391WP | White Louver Hood | 22 | WS15 | Vertical Stack 45° Angle | 13 |
| 72 | Diffuser Tee | 21 | 582 | Reducer- 2PC | 19 | WS16 | Vertical Stack 90° Elbow | 13 |
| 72WF | Diffuser Tee w/Flange | 21 | 810 | Return Air Package | 8 | WS17 | Stack Transition | 13 |
| 73 | Square Diffuser Box | 21 | 810B | Cold Air Boot | 8 | WS20 | Stack Straight Collar | 13 |
| 74 | Register Cap | 20 | 811 | Return Air Package | 8 | WS21 | Stack End Cap | 13 |
| 75 | Register Box- 7" Deep | 20 | 811B | Cold Air Boot | 8 | WS45 | Stack Damper | 13 |
| 77 | Rd to Square Diffuser Box | 20 | 812 | Return Air Package | 8 | WS60 | Stack Top Takeoff | 13 |
| 77S | Rd to Square Diffuser Box Side | 20 | | | | WS61 | Stack Side Takeoff | 13 |

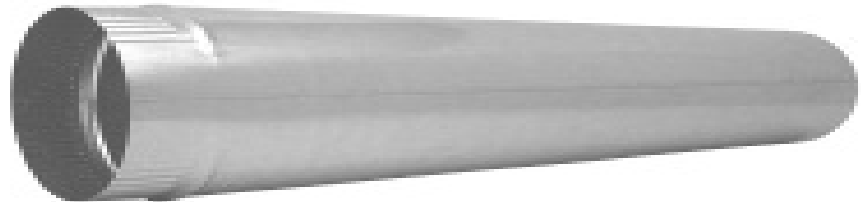


No. SL24
2 FT PIPE - 30, 26 & 24 GAUGE

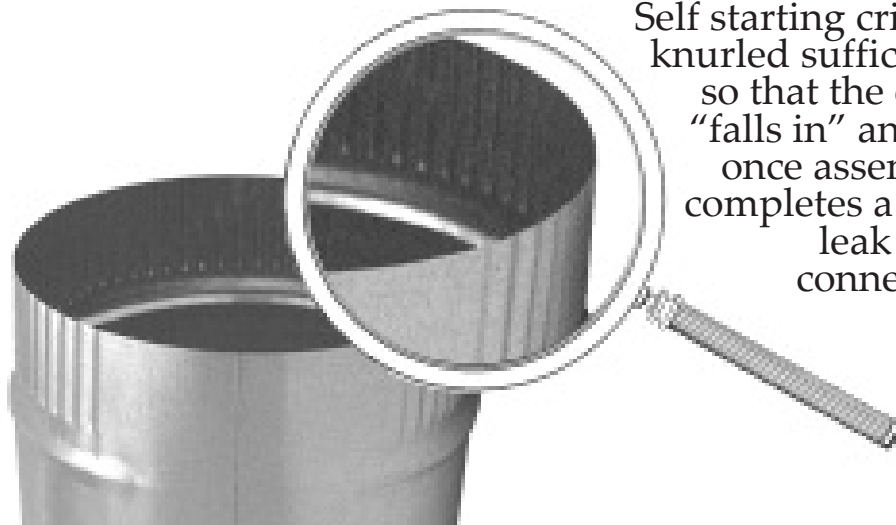
No tools required to assemble Snaplock Pipe. Simply start at one end and easily snap pipe together. One person can quickly assemble up to 10 ft. lengths.



No. SL60
5 FT PIPE - 30 & 26 GAUGE



No. SL120
10 FT PIPE - 30 GAUGE



Self starting crimp is knurled sufficiently so that the crimp "falls in" and yet, once assembled completes a rigid, leak proof connection.



90° ADJUSTABLE ELBOW



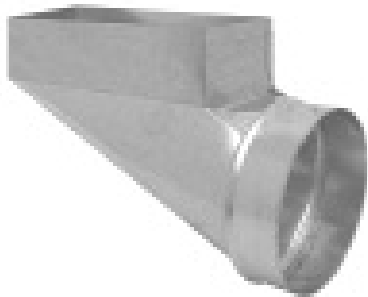
45° ADJUSTABLE ANGLE



No. 24R
90° REGISTER BOOT



No. 27R
STRAIGHT
REGISTER BOOT



No. 28R
END REGISTER BOOT
No. 28RL LEFT HAND
No. 28RR RIGHT HAND



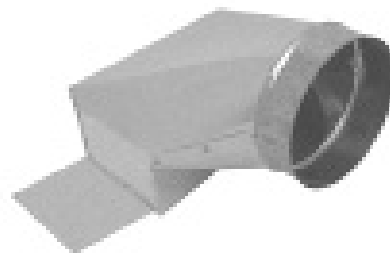
No. 29RO
2" OFFSET
REGISTER BOOT



No. 17CR
OFFSET
ADJUSTABLE
REGISTER BOOT



No. 26R
45° ANGLE
REGISTER BOOT



No. 24RWE
90° BASEMENT BOOT

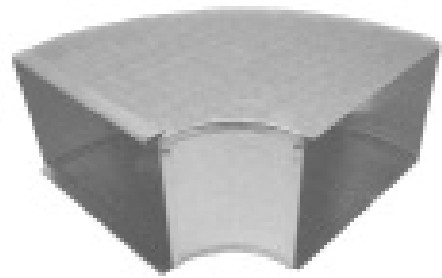
- 12", 30", 48", 60", and 96" Lengths
- Furnished in Button Snaplock with S-Cleat & Drive Connections
- Cross Broken for Extra Stiffening Strength



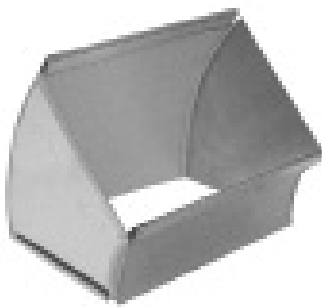
No. TD
TRUNK DUCT



No. 13
FLAT 45° ANGLE



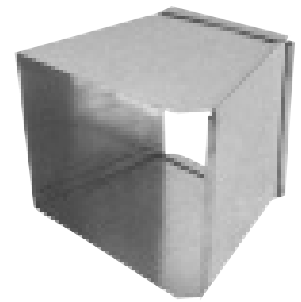
No. 14
FLAT 90° ELBOW



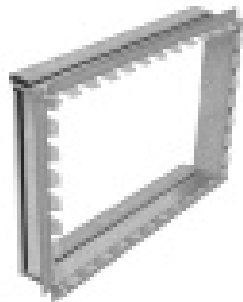
No. 15
VERTICAL 45° ANGLE



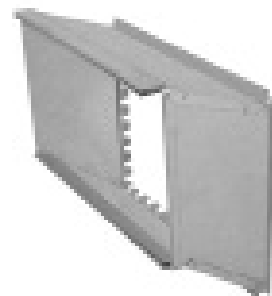
No. 16
VERTICAL 90° ELBOW



No. 17
TRANSITION



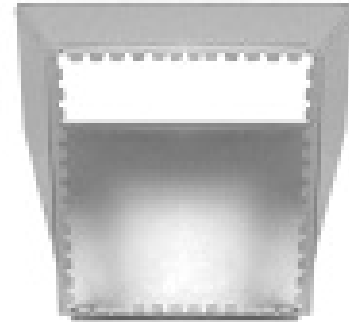
No. 20
STRAIGHT COLLAR



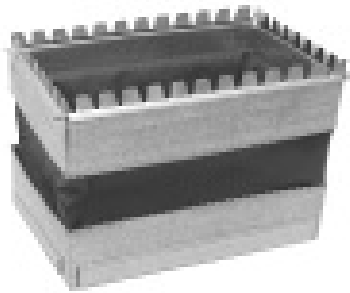
No. 23
OFFSET COLLAR



No. 21
END CAP



No. 23AT
TRANSITION COLLAR

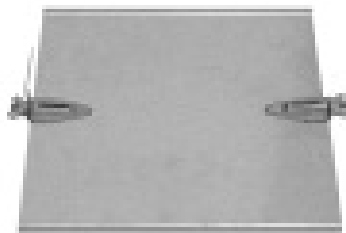


No. 18
CONNECTOR
PLENUM to TRUNK

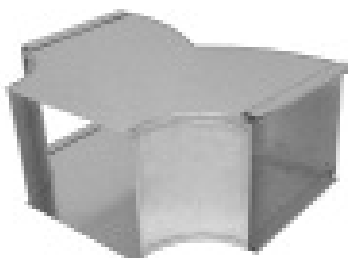


No. 47
CONNECTOR
FURNACE to PLENUM

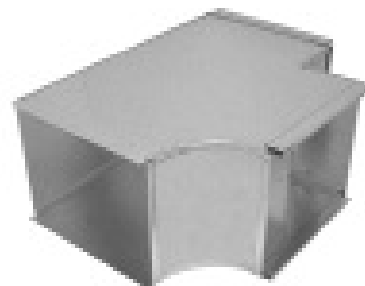
| 23AT TRANSITION | |
|---------------------------------------|--------------|
| PLENUM OPENING (width x height) | DUCT SIZE |
| 12x10 | 14x8 |
| 12x11 | 16x8 |
| 12x12 | 18x8 |
| 12x14 | 20x8 |
| 12x15 | 22x8 |
| 12x16 | 24x8 |
| 14x15 | 26x8 |
| 14x16 | 28x8 |
| 16x15 | 30x8 |
| 16x16 | 32x8 |



No. 42
VOLUME DAMPER



No. 14TT
TRUNK TEE



No. 17TT
TRUNK TEE

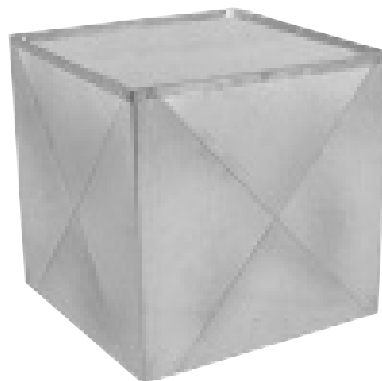
No. 49T
ADJ. PLENUM TOP



No. 49P
ADJ. PLENUM SIDE



COLD
AIR
BOOT



No. 4
PLENUM CHAMBER
CUSTOM SIZES
SHIPPED KNOCKED
DOWN OR MADE-UP

ADJUSTABLE PLENUMS

AVAILABLE TO ORDER
(Actual plenum height,
2" less than listed size)

TO INSTALL...

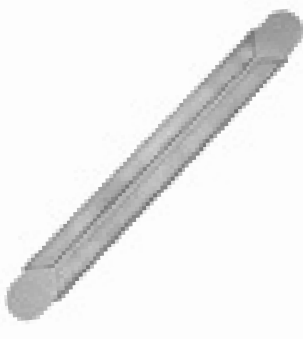
- (1) Cut raw edges of side panels to desired width and height sizes.
- (2) Trim top to desired width and depth dimensions.
- (3) Assemble 3 sides, slide top into side panel pockets, then position fourth side.
- (4) Secure assembly with sheet metal screws.

RETURN AIR PACKAGE

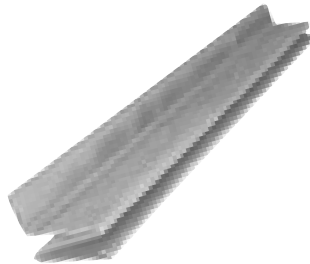
Complete package
consisting of:

- 1 - #20 Starting Collar
 - 2 - 30" Duct Sections
 - 1 - R.A. Plenum with
1" Filter Rack
 - 6 - 10" Drive Straps
- Shipped K.D. in One Carton*

| RA PKG. | DUCT SIZE | BOOT ONLY |
|---------|---------------|-----------|
| 810 | 20x10 - 20x16 | 810B |
| 811 | 25x10 - 25x16 | 811B |
| 812 | 20x10 - 20x14 | 812B |
| 813 | 25x10 - 25x14 | 813B |
| 814 | 20x8 - 20x16 | 814B |
| 815 | 24x8 - 24x16 | 815B |
| 816 | 20x8 - 20x14 | 816B |
| 817 | 24x8 - 24x14 | 817B |



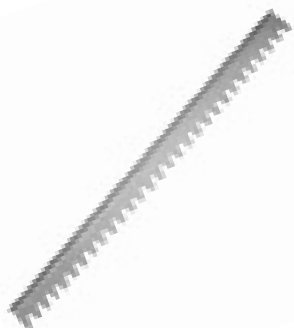
No. 8
DRIVE CLEAT



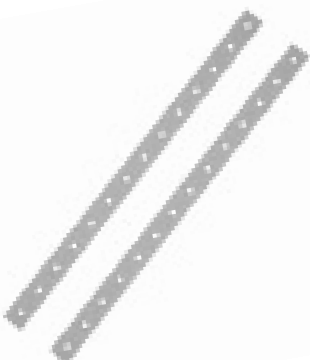
No. 37
RIGID S-CLEAT



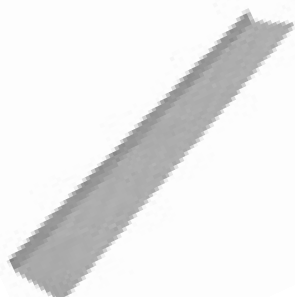
No. 6
S-CLEAT



No. 3
FIBERGLASS
EXTENSION



No. 5
12" DUCT HANGER



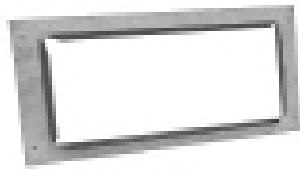
No. CAF
COLD AIR FRAME



No. PC
PLENUM
CORNER



No. 48
PANNING
MATERIAL



No. 31
RETURN AIR
FRAME



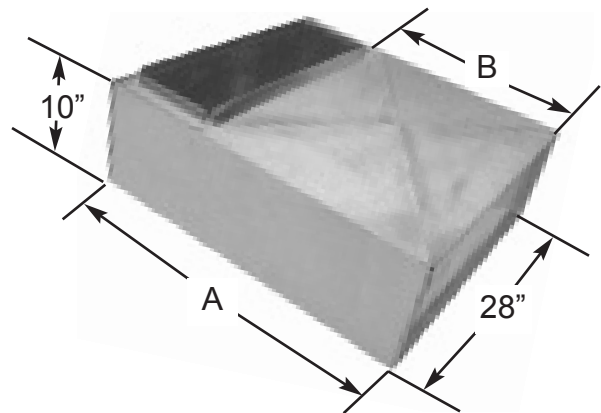
No. 35
TRUNK REDUCER



No. 35A
TRUNK REDUCER

RETURN AIR/SUPPORT BOX

| | SB30 | SB38 |
|----------------------|-------------|-------------|
| A DIMENSION | 30" | 38" |
| B DIMENSION | 20" | 26" |
| RETURN AIR DUCT SIZE | 8 X 24 | 10 X 25 |



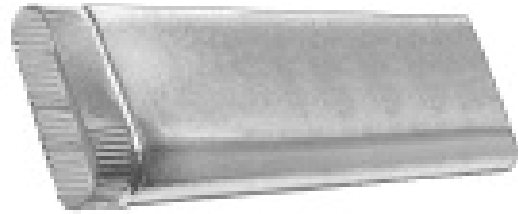
RETURN AIR/SUPPORT BOX

No. SBF - Return Air Support Box w/Filter Rack
(Accepts 1", 4", & 5" Filter)

No. 100 OVAL PIPE 100" - 30 Ga.

No. 112 OVAL PIPE 112" - 30 Ga.

No. 160 OVAL PIPE 60" - 30 Ga.



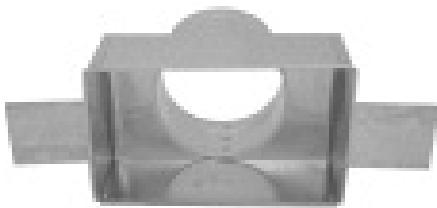
No. 110
OVAL STACKHEAD



No. 113
FLAT 45° ANGLE



No. 114
FLAT 90° ELBOW



No. 111
REGISTER OUTLET



No. 150
STACKHEAD w/COLLAR



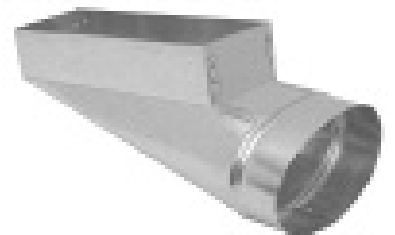
No. 106
OVAL to ROUND
REVERSE BOOT



No. 124R
90° REGISTER BOOT

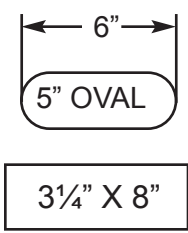
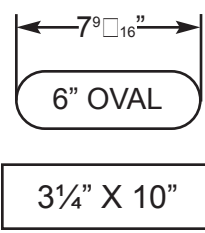
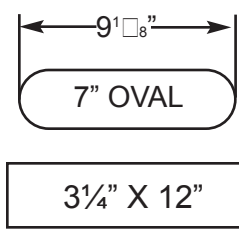
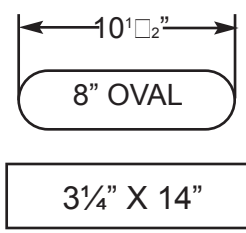


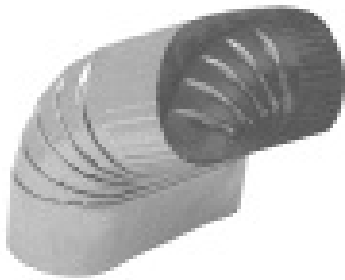
No. 127R
STRAIGHT
REGISTER BOOT



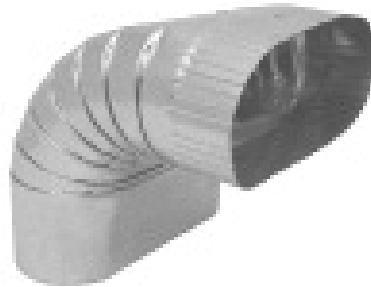
No. 128R
END REGISTER BOOT

WALL STACK VS. OVAL PHYSICAL COMPARISON

| | | | |
|---|--|---|--|
|  <p>5" OVAL</p> <p>3 1/4" X 8"</p> |  <p>6" OVAL</p> <p>3 1/4" X 10"</p> |  <p>7" OVAL</p> <p>3 1/4" X 12"</p> |  <p>8" OVAL</p> <p>3 1/4" X 14"</p> |
|---|--|---|--|



No. 115
VERTICAL 45° ANGLE



No. 116
VERTICAL 90° ELBOW



No. 162
OVAL TOP TAKEOFF



No. 127
OVAL to ROUND
STRAIGHT BOOT



No. 124
OVAL to ROUND
90° BOOT



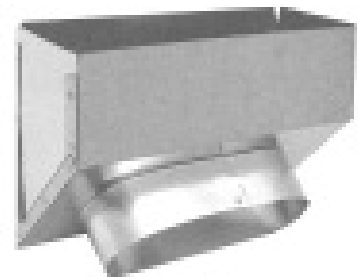
No. 163
OVAL SIDE TAKEOFF



No. 128
OVAL to OVAL
REVERSE BOOT

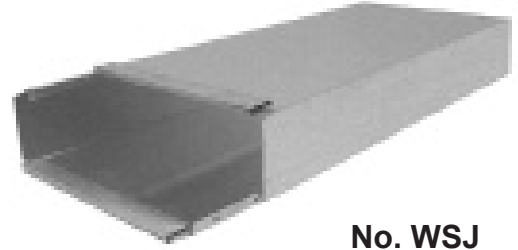


No. 355
STRAIGHT OVAL
REGISTER BOX



No. 360
ANGLE OVAL
REGISTER BOX

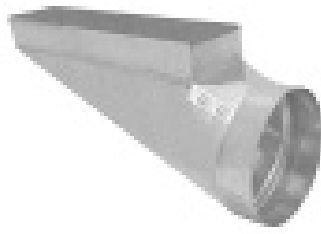
- 12", 24", 30", 60" & 100" Lengths
- Furnished in Button Snaplock
- Two Pieces Per Section
- No Tools and No Indentations, Just Snap It and It's Closed



No. WSJ
WALL STACK



No. 24
90°
STACK BOOT



No. 28
END
STACK BOOT



No. 26
ANGLE
STACK BOOT

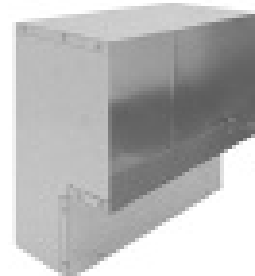


No. 27
STRAIGHT
STACK BOOT

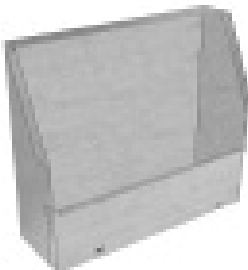
STACKHEADS



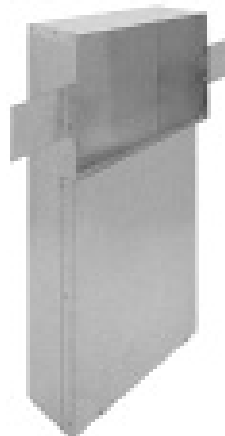
No. WS9
DOUBLE
STACKHEAD



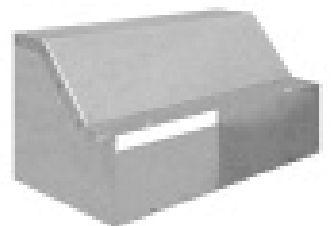
No. WS10
STACKHEAD



No. WS11
PROJECTION
STACKHEAD



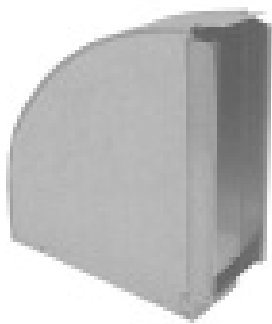
No. WS10X
STACKHEAD w/EARS



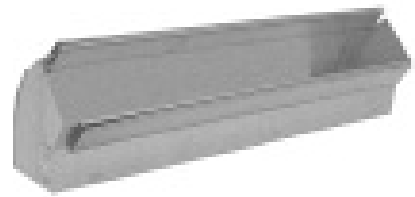
No. WS12
HORIZONTAL
STACKHEAD



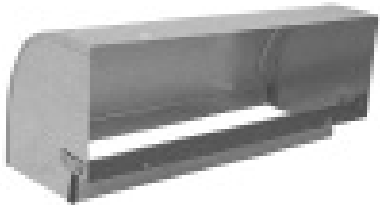
No. WS13
FLAT 45° ANGLE



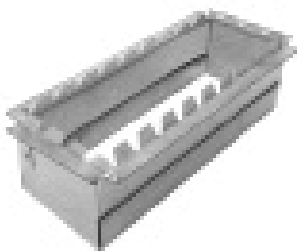
No. WS14
FLAT 90° ELBOW



No. WS15
VERTICAL 45° ANGLE



No. WS16
VERTICAL 90°
ELBOW



No. WS20
STRAIGHT COLLAR



No. WS21
END CAP



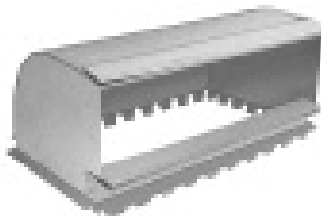
No. WS45
DAMPER



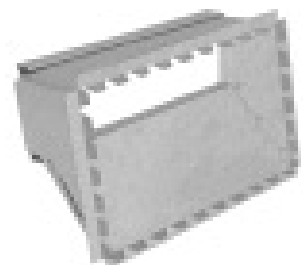
No. WS7C
CENTER
REVERSE ELBOW
WS7L - Left Hand
WS7R - Right Hand



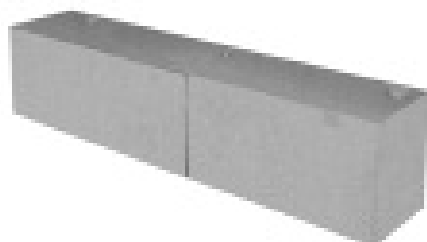
No. WS17
TRANSITION



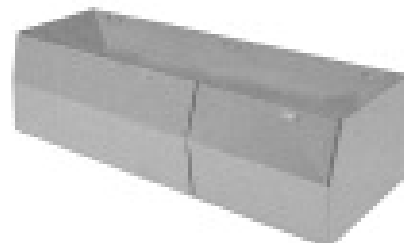
No. WS60
TOP TAKEOFF



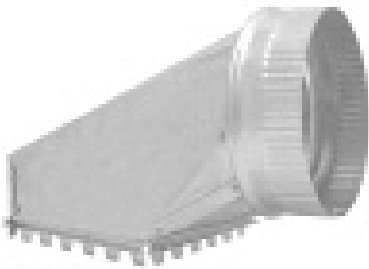
No. WS61
SIDE TAKEOFF



No. 132
"A" ADAPTER ADJUSTABLE
2 1/4 x 10 - 12 or 14



No. 133
"B" ADAPTER ADJUSTABLE
4 x 10 - 3 1/4 x 10, 12, or 14



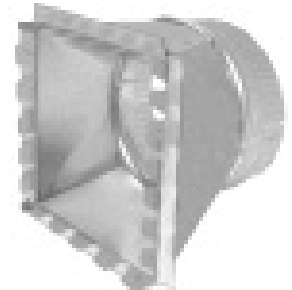
No. 62
SHEET METAL
TOP TAKEOFF

| Pipe Size | Base Opening |
|-----------|-------------------------------------|
| 4" | 4 x 6 |
| 5" | 5 x 6 |
| 6" | 6 x 6 |
| 7" | 7 x 7 |
| 8" | 8 x 8 |
| 9" | 10 x 10 |
| 10" | 11 ¹ / ₂ x 10 |
| 12" | 12 x 12 |
| 14" | 14 x 14 |



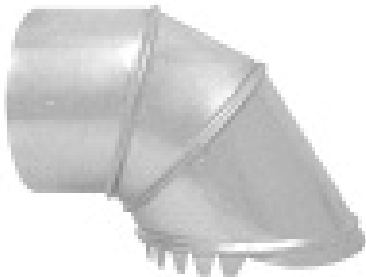
No. 62FG
FIBERGLASS TOP
TAKEOFF

| Pipe Size | Base Opening |
|-----------|-------------------------------------|
| 4" | 4 x 6 |
| 5" | 5 x 6 |
| 6" | 6 x 6 |
| 7" | 7 x 7 |
| 8" | 8 x 8 |
| 9" | 10 x 10 |
| 10" | 11 ¹ / ₂ x 10 |
| 12" | 12 x 12 |
| 14" | 14 x 14 |



No. 63
SHEET METAL
SIDE RD TAKEOFF

| Pipe Size | Base Opening |
|-----------|--------------|
| 4" | 6 x 6 |
| 5" | 6 x 6 |
| 6" | 6 x 6 |
| 7" | 6 x 8 |
| 8" | 6 x 10 |
| 9" | 7 x 12 |
| 10" | 7 x 14 |
| 12" | 8 x 18 |
| 14" | 8 x 20 |



No. HT15
SHEET METAL RD to RD
HALF TAB TAKEOFF

| Pipe Size | Base Opening |
|-----------|--------------|
| 6" | 7" |



No. 65
SHEET METAL RD to RD
ADJUSTABLE TAKEOFF

| Pipe Size | Base Opening |
|-----------|--------------|
| 5" | 6" |
| 6" | 7" |
| 7" | 8" |
| 8" | 9" |



No. 87
SHEET METAL
LEVER TAKEOFF

| Pipe Size | Base Opening |
|-----------|--------------|
| 5" | 6" |
| 6" | 7" |
| 7" | 8" |



No. 63FG
FIBERGLASS
SIDE TAKEOFF

| Pipe Size | Base Opening |
|-----------|--------------|
| 4" | 6 x 6 |
| 5" | 6 x 6 |
| 6" | 6 x 6 |
| 7" | 6 x 8 |
| 8" | 6 x 10 |
| 9" | 7 x 12 |
| 10" | 7 x 14 |
| 12" | 8 x 18 |
| 14" | 8 x 20 |



No. 63A
SHEET METAL
ADJUSTABLE RD TAKEOFF

| Pipe Size | Base Opening |
|-----------|--------------|
| 4" | 4 x 6 |
| 5" | 5 x 6 |
| 6" | 6 x 7 |
| 7" | 7 x 8 |
| 8" | 7 x 10 |
| 9" | 9 x 11 |
| 10" | 10 x 12 |
| 12" | 12 x 16 |
| 14" | 14 x 19 |



No. 63AFG
FIBERGLASS
ADJUSTABLE TAKEOFF

| Pipe Size | Base Opening |
|-----------|--------------|
| 4" | 4 x 6 |
| 5" | 5 x 6 |
| 6" | 6 x 7 |
| 7" | 7 x 8 |
| 8" | 7 x 10 |
| 9" | 9 x 11 |
| 10" | 10 x 12 |
| 12" | 12 x 16 |
| 14" | 14 x 19 |



No. S5
SHEET METAL
PIVOT TAKEOFF

| Pipe Size | Base Opening |
|-----------|--------------|
| 5" | 6" |
| 6" | 7" |
| 7" | 8" |



No. 64
SHEET METAL
DOUBLE TOP TAKEOFF

| Pipe Size | Base Opening |
|-----------|--------------|
| 5" | 6 x 10 |
| 6" | 7 x 10 |
| 7" | 7 x 14 |
| 8" | 8 x 14 |



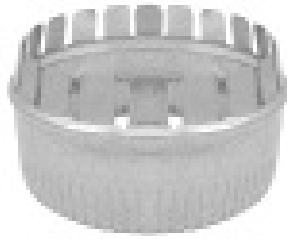
No. 34PLF
FIBERGLASS
ADJUSTABLE TAKEOFF

| Pipe Size | Base Opening |
|-----------|---|
| 5" | 5 x 6 |
| 6" | 6 ³ / ₈ x 6 ³ / ₈ |
| 7" | 7 x 8 |
| 8" | 6 ³ / ₈ x 10 |

SHEET METAL COLLARS



No. 120SC
SNAP COLLAR



No. 97
FLAT COLLAR



No. 97LS
LONG FLAT COLLAR
No. 97LSWD
COLLAR w/DAMPER



No. 40
DAMPER SECTION



No. 156
SPIN FITTING



No. 156D
SPIN FITTING
w/DAMPER



No. 156S
SPIN FITTING
w/SCOOP



No. 156SD
SPIN FITTING
w/SCOOP &
DAMPER

FIBERGLASS COLLARS



No. 84ST
COLLAR
No. 84STWD
COLLAR w/DAMPER



No. 122SC
SNAP COLLAR



No. 97FG
SPIN COLLAR



No. 97FGWD
SPIN COLLAR
w/DAMPER



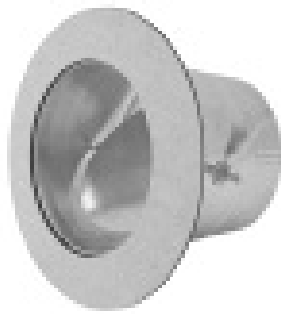
No. 98
SPIN COLLAR
w/SCOOP



No. 98WD
SPIN COLLAR
w/SCOOP &
DAMPER



No. ATT
TAKEOFF
PLAIN



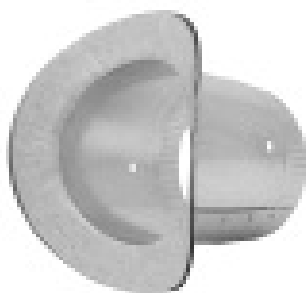
No. ATD
TAKEOFF
w/DAMPER



No. ATS
TAKEOFF
w/SCOOP



No. ATSD
TAKEOFF
w/SCOOP &
DAMPER



No. ATTRP
RD PIPE TAKEOFF
No. ATDRP
w/DAMPER



No. ATTRP45
45° SADDLE
TAKEOFF



No. ATTBM
BELLMOUTH TAKEOFF
No. ATDBM
w/DAMPER



No. AT62
TOP TAKEOFF
No. AT62WD
w/DAMPER



No. AT63
RECTANGULAR TAKEOFF
No. AT63WD
w/DAMPER



No. ATHE
HIGH EFFICIENCY TAKEOFF
No. ATHEWD
w/DAMPER

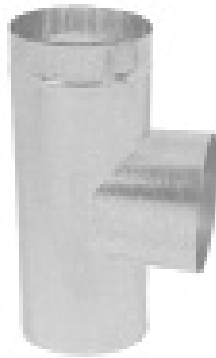


No. AT63A
ADJUSTABLE
RD TAKEOFF

| Size | Base Opening |
|------|--------------|
| 4" | 6 x 6 |
| 5" | 6 x 6 |
| 6" | 6 x 6 |
| 7" | 6 x 8 |
| 8" | 6 x 10 |
| 9" | 7 x 12 |
| 10" | 7 x 14 |
| 12" | 8 x 18 |
| 14" | 8 x 20 |

| Size | Base Opening |
|------|--------------|
| 5" | 6 x 10 |
| 6" | 6 x 10 |
| 7" | 6 x 10 |
| 8" | 8 x 12 |
| 9" | 9 x 12 |
| 10" | 10 x 14 |
| 12" | 12 x 18 |
| 14" | 14 x 18 |

- Tees and Wyes
- Reducers
- Dampers
- Vents
- Drawbands
- Flashing
- Connectors



TEE JOINT
No. 53 24" LONG
No. 54 15" LONG



SMOKE Y
No. 50 15" LONG
No. 51 24" LONG



No. 52
FLUE Y



No. 54SW
SWIVEL TEE



No. 58
3 Pc. REDUCER
 Available Crimped



No. 99
CHIMNEY CAP



No. 99LD
LO-DRAFT
CHIMNEY CAP



No. 199
"H" VENT



No. 117
FLUE THIMBLE



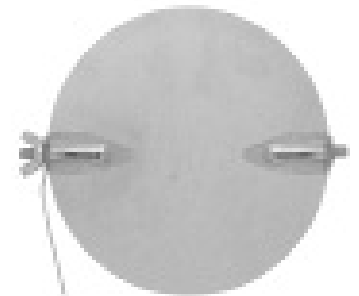
No. 93
ELBOW
DRAFT VENT



No. 94
HORIZONTAL
DRAFT VENT



No. 95
VERTICAL
DRAFT VENT



No. 44
ROUND DAMPER



No. 55
TEE CAP
Available Crimped
Available w/Handle



No. 207QT
QUICK TEE 90°



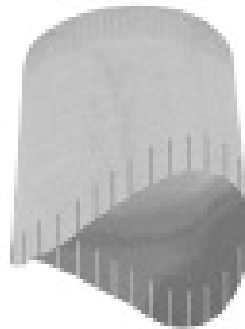
No. 208QY
QUICK Y 45°



No. 582
2 Pc. REDUCER



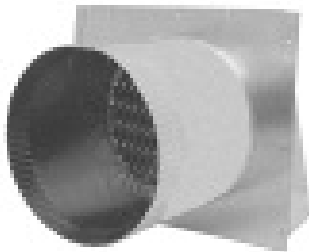
No. 78
Y-BRANCH



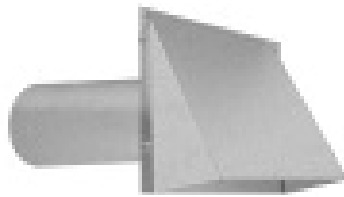
No. 83PC
BRANCH
CONNECTOR



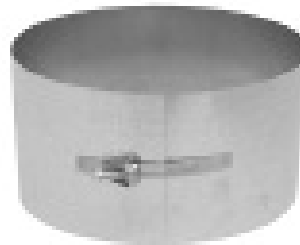
No. 86SC
SLEEVE
CONNECTOR



No. 36
FRESH AIR INTAKE



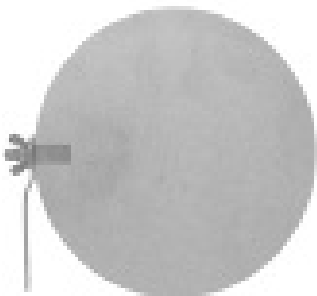
No. 39
GALVANIZED
VENT HOOD



No. 96
DRAWBAND
GEAR CLAMP



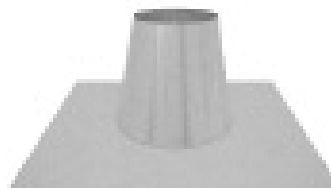
No. S75
SNAPPY
DRAWBAND



No. 44S
ROUND DAMPER
FIXED HARDWARE



No. 140
ADJ. ROOF
FLASHING



No. 141
TALL CONE
FLASHING

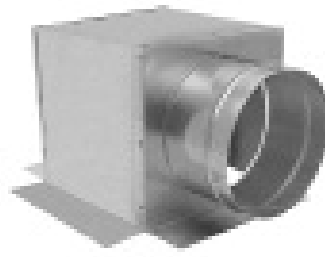


No. 142
STORM COLLAR

Ceiling Outlets & Register Boxes



No. 177
CEILING OUTLET



No. 177S
SIDE OUTLET



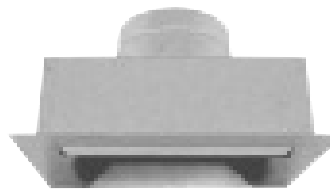
No. 277
CEILING OUTLET
NO FLANGE



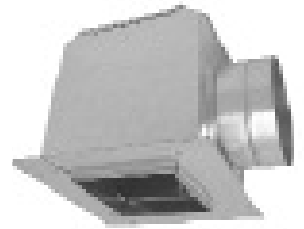
No. 77
ROUND to SQUARE
DIFFUSER BOX



No. 77S
ROUND to SQUARE
DIFFUSER BOX
SIDE OUTLET



No. 85
INSULATED CEILING
BOX TOP OUTLET



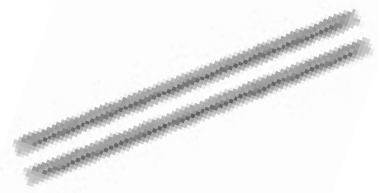
No. 85S
INSULATED CEILING
BOX SIDE OUTLET



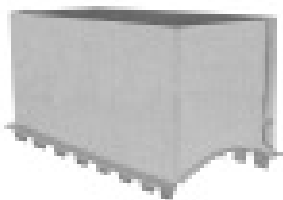
No. 51F
STRAIGHT CEILING BOX
w/FLANGE



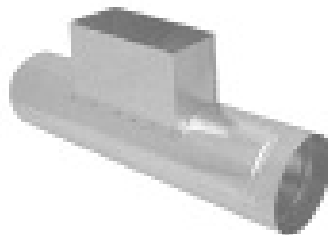
No. 59F
90° CEILING BOX
w/FLANGE



No. MR
MOUNTING RAILS
Available 24" or 36" long



No. 70
REGISTER TAKEOFF



No. 71
REGISTER TEE



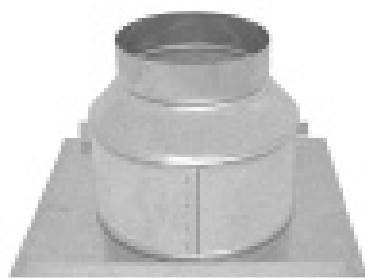
No. 74
REGISTER CAP



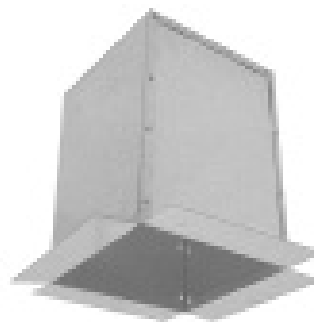
No. 75
7" DEEP
REGISTER BOX



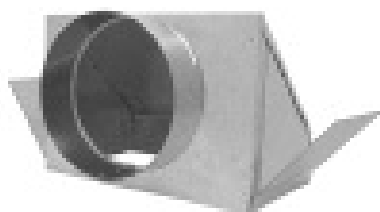
No. 77WF
DIFFUSER FUNNEL
w/FLANGE



No. 58WF
DIFFUSER OUTLET
w/FLANGE



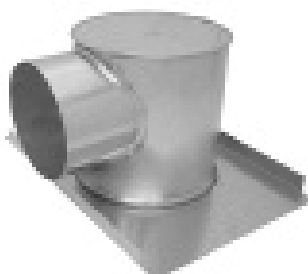
No. 73
SQUARE
DIFFUSER BOX



No. 67
BASEMENT
DIFFUSER BOX



No. 72
DIFFUSER TEE



No. 72WF
DIFFUSER TEE
w/FLANGE



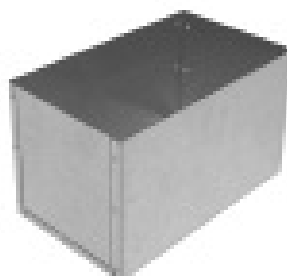
No. 66WF
CEILING DIFFUSER
OUTLET



No. 19RC
REGISTER COLLAR



No. 92
FUNNEL
REGISTER BOX
w/FLANGE



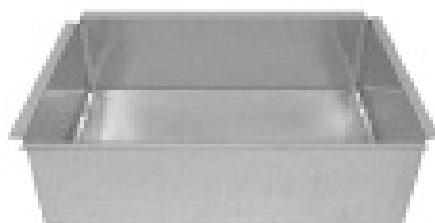
No. 90
FLOOR REGISTER
BOX 6" DEEP



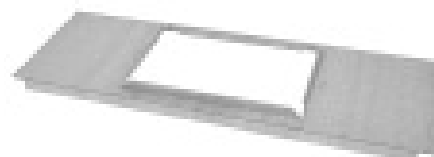
No. 91
FLOOR REGISTER
BOX 11" DEEP



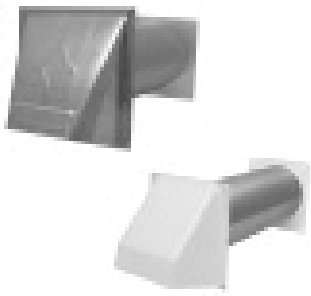
No. 137
DRAIN PAN



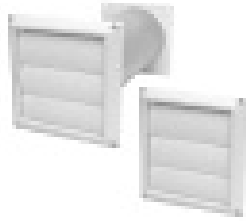
No. 170
RETURN AIR PAN



No. 31PF
PLASTER FRAME



No. SVH
ALUMINUM
VENT HOOD
No. SVHBP
BROWN PLASTIC
No. SVHWP
WHITE PLASTIC



No. 390WP
WHITE LOUVER
HOOD w/TAIL
No. 391WP
FACE ONLY



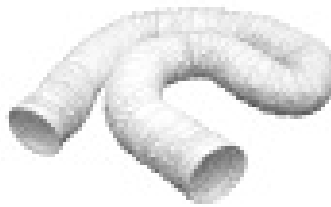
No. SAP
ALUMINUM PIPE



No. SAE
ALUMINUM
ELBOW



No. SPC
PIPE CLAMP



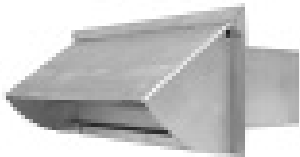
No. SH
FLEXIBLE
WHITE VINYL HOSE



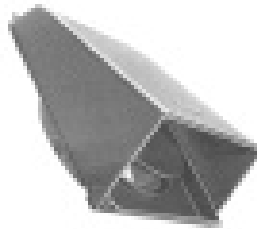
No. MF
FLEXIBLE
ALUMINUM DUCT



No. SAL
ALUMINUM
TRANSITION DUCT



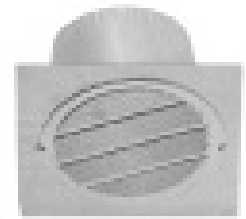
No. 201VH
ALUMINUM
WALL CAP
No. 201VHWP
WHITE PLASTIC



No. 39GP
GRAY PLASTIC
WALL CAP
w/DAMPER
No. 39WP
WHITE PLASTIC



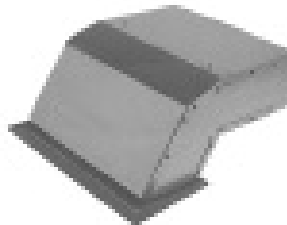
No. 39AL
ALUMINUM
WALL CAP
w/DAMPER



No. EV141
EAVE VENT



No. RV51
ALUMINUM ROOF
CAP w/SCREEN
UP TO 8" ROUND



No. 220EC
EAVE VENT
w/GRILLE

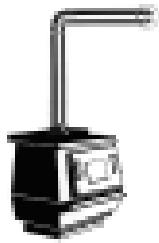


ALUMINUM ROOF
CAP w/DAMPER
& SCREEN

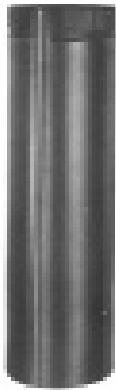
No. 239 - Fits 4" DIA.

No. 240 - Up to 7" RD

No. 241 - Up to 10" RD



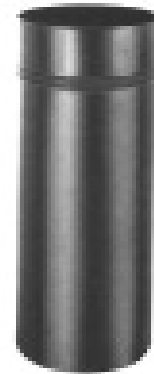
- Available in 5", 6", 7", & 8" Diameters
- 24 Gauge Material
- Heat and Rust Resistant
- Standard Packaging



No. BP
SNAPLOCK PIPE
Available 12", 24", & 36" Lengths



No. BP90
90° ADJUSTABLE ELBOW



No. BPCHAD
CHIMNEY ADAPTER



No. BP127
OVAL to RD ADAPTER



No. BP54
TEE JOINT



No. BP55
TEE CAP



No. BP58
3 Pc. REDUCER



No. BP96
DRAWBAND



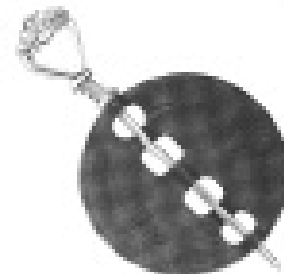
No. BPCON
CONNECTOR



No. BPC
PIPE COLLAR



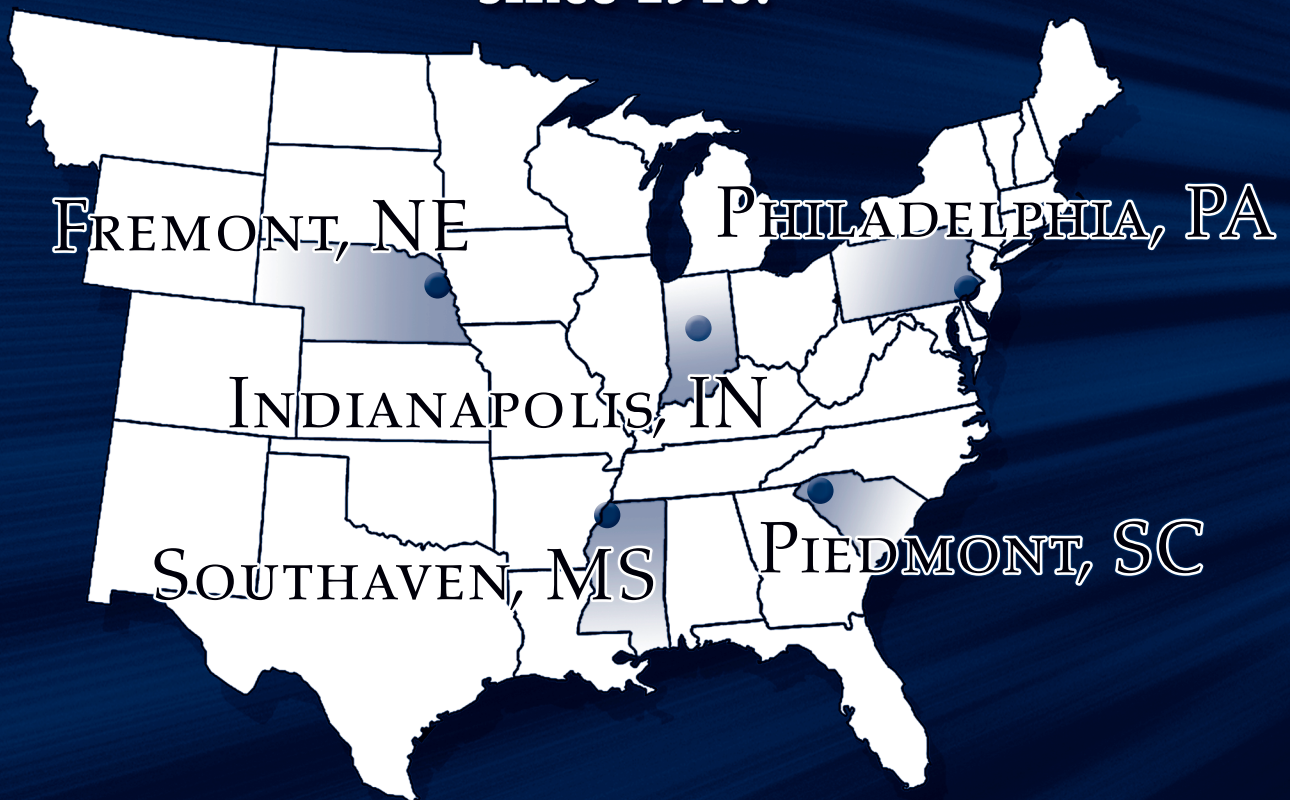
No. BPTC
TRIM COLLAR



No. CID
CAST IRON DAMPER

Black Pipe, Elbows, & Accessories

**Providing Quality Products,
Superior Service and On-Time Delivery
since 1946.**



Philadelphia Division

Philadelphia, PA

(800) 523-1052

(800) 722-2076 Fax

Greenville Division

Piedmont, SC

(800) 229-2803

(864) 845-6190 Fax

Indianapolis Division

Indianapolis, IN

(800) 490-7707

(317) 823-1006 Fax

Mississippi Division

Southaven, MS

(800) 541-6706

(662) 393-8005 Fax

Nebraska Division

Fremont, NE

(800) 801-0336

(402) 753-9008 Fax

www.southwarkmetal.com