



RECTORSEAL[®]

ENGINEERED HVACR PRODUCTS **CATALOG**



Equipment Mounting
Commercial Lineset Ducting
Locking Refrigerant Caps
Condensate Management
Lineset Covers
Universal Condenser Brackets



**RD Series Engineered Commercial Metal Duct System
Protects VRF AC & Refrigeration Linesets
on Roof Tops & Vertical Building Surfaces**

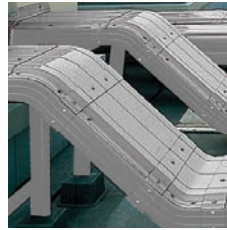
Professional Engineering Solutions that Provide Strength, Protection & Durability!

Table of Contents



**Big Foot®
Equipment Mounting
Systems**

page 4



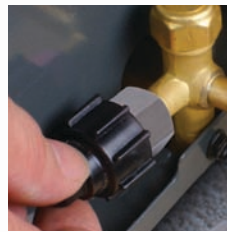
**RD Series
Commercial Rooftop Metal
VRF Ducting Systems**

page 8



**PD Series
Light Commercial PVC
Lineset Duct Systems**

page 11



**Gas Guard™
Keyless Locking
Refrigerant Gas Caps**

page 13



**Aspen® Pumps
for Mini Split Units**

page 14



**Condensate
Management**

page 16



**SlimDuct®
Residential / Light
Commercial Lineset Covers**

page 19



**RectorSeal®
Universal Condenser
Brackets & Risers**

page 22



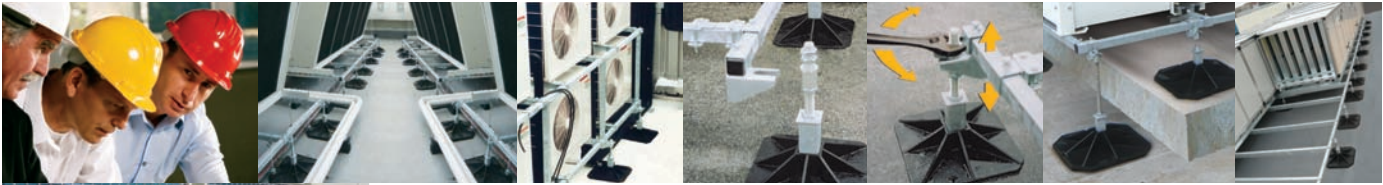
For Submittal Data Sheets, visit
www.rectorseal.com/qr/epsub.html
or scan this code.





Equipment Mounting

Heavy duty framework systems for equipment mounting on flat roofs.



The Advantages of Big Foot Systems.

The industry standard

Big Foot Systems set the industry standard for free standing flat roof mounting of air conditioning, refrigeration and other equipment.

The system is modular and completely flexible. Allows for multiple design layouts. Mounting is strong, secure, flexible, vibration absorbing and leak proof. Installation is quick, clean, practical and aesthetically pleasing. Free-standing design makes roofing repairs simpler and resurfacing less costly.

Rugged removable legs Each leg assembly holds 268 lbs. and can be removed individually. Costly removal of equipment is unnecessary when re-roofing or resurfacing.

Optimum weight distribution The Big Foot base is designed to transfer weight beyond the roof's center stress point.

Optimum strength and durability The Big Foot base is made of glass filled Nylon with UV protection. Frameworks are hot dip galvanized for all weather protection.

Quiet durability Each foot assembly includes a recycled crumb rubber pad for vibration isolation and to protect the roof surface.

Quick on-site leveling The legs allow for vertical height adjustment to permit easy leveling. A stepped roof option is available.

Reduced risk of roof leaks The Big Foot System does not penetrate the waterproof membrane, eliminating difficult flashing around concrete structures. The roofing system warranty is never compromised.

Architecturally friendly Big Foot clean contemporary framework suspends equipment above the roof surface, allowing for a simpler, more flexible roof design.

Equipment Clamps secure equipment at both ends of crossbars and are fully adjustable.

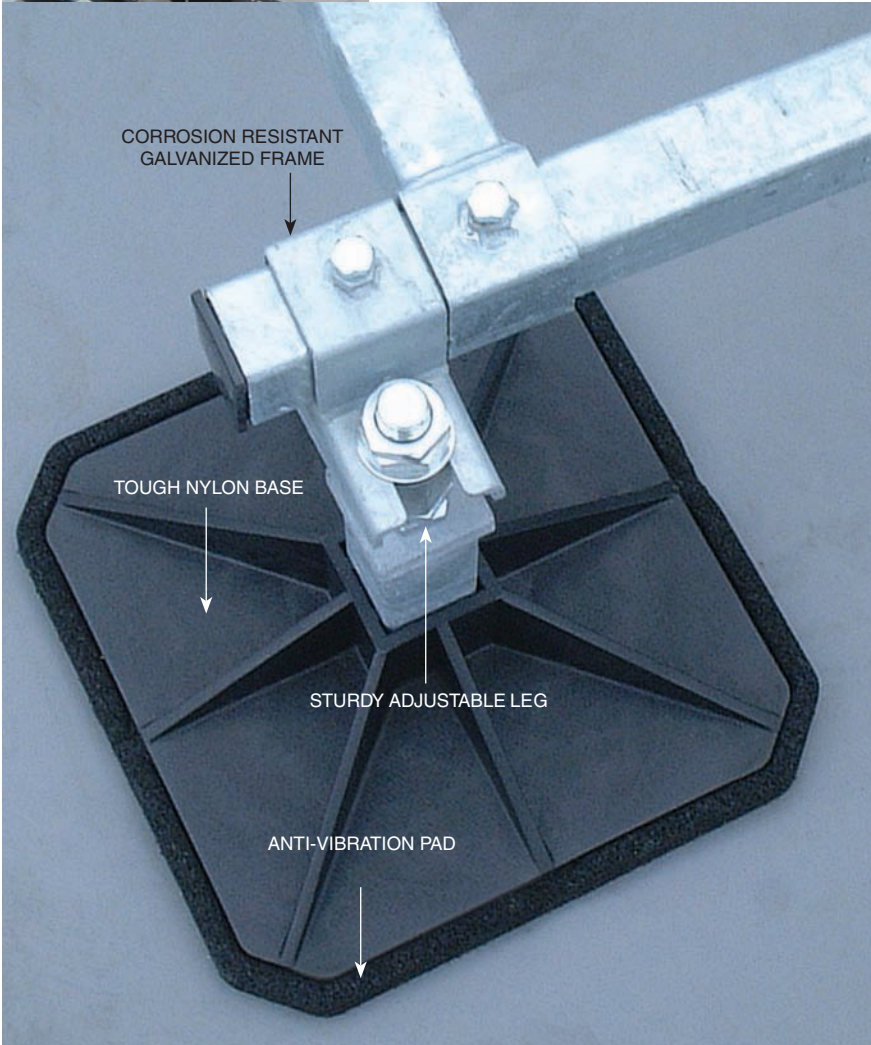
Linear Adjustment The cross bars supporting the equipment slide along the end bars into position required, then are locked securely in place.

Leg Assembly Positioning The leg assembly is typically positioned outside the frame work, but can be placed inside the framework to avoid an obstruction, if necessary.

Custom frameworks

For larger, more complex projects, RectorSeal offers a custom frame design service. Available upon request for Big Foot frames, Cube & Beam assemblies, Computational Fluid Dynamics (CFD) modeling and engineering design & analysis.

Contact RectorSeal 1-800-231-3345 or your bid & spec representative.





Heavy Duty Cube & Beam



RS# (ref. #)	Description	Support Wt lbs.	L	W	H	Foot Size	Frame Wt lbs.
87650 (RHC 20 450)	HD Cube 200 kit 18"	2646	44.5"	44.5"	13"	18"	137
87651 (RHC 200 600)	HD Cube 200 kit 24"	4409	51"	51"	13"	24"	159
87652 (RHC 600 450)	HD Cube 600 kit 18"	2646	44.5"	44.5"	23"	18"	165
87653 (RHC 600 600)	HD Cube 600 kit 24"	4409	51"	51"	23"	24"	181
87654 (RHC 800 450)	HD Cube 800 kit 18"	2646	44.5"	44.5"	35"	18"	177
87655 (RHC 800 600)	HD Cube 800 kit 24"	4409	51"	51"	35"	24"	192
87657 (RHCA ADJUSTER)	Cube Adjuster	4409	9.75"	6"	-	-	6.6
87662 (RHB 450)	HD Beam kit 18"	1323	49"	19"	12"	18"	66
87663 (RHB 600)	HD Beam kit 24"	2205	55"	25"	12"	24"	71
87667 (RHAB 450)	HD Adjustable Beam kit 18"	1102	52"	19"	12-14"	18"	77
87668 (RHAB 600)	HD Adjustable Beam kit 24"	1764	59"	25"	12-14"	24"	82

Frames for VRF Condensers - 78" Wide



RS# (ref. #)	Description	VRF Dimensions		Support Wt lbs.	Frame Dimensions		# of Feet	Frame Wt lbs.
		L	W		L	W		
87721 (VRF1000)	1000 Frame kit	37"	30"	1056	50"	78"	4	108
87621 (VRF1500)	1500 Frame kit	49"	30"	1056	70"	78"	4	117
87722 (VRF2000)	2000 Frame kit	69"	30"	1584	90"	78"	6	155
87723 (VRF2500)	2500 Frame kit	73"	30"	1584	110"	78"	6	161
87724 (VRF3000)	3000 Frame kit	104"	30"	2112	130"	78"	8	194
87622 (VRF3500)	3500 Frame kit	100"	30"	2112	130"	78"	8	194
87725 (VRF4000)	4000 Frame kit	117"	30"	2112	149"	78"	8	216
87623 (VRF4500)	4500 Frame kit	120"	30"	2112	149"	78"	8	216
87624 (VRF5000)	5000 Frame kit	117"	30"	2640	169"	78"	10	279
87625 (VRF5500)	5500 Frame kit	145"	30"	2640	169"	78"	10	257
87626 (VRF6000)	6000 Frame kit	142"	30"	2640	169"	78"	10	279
87627 (VRF6500)	6500 Frame kit	165"	30"	2640	169"	78"	10	293
87628 (VRF7000)	7000 Frame kit	174"	30"	3168	208"	78"	12	334
87629 (VRF7500)	7500 Frame kit	207"	30"	3168	228"	78"	12	372

Angled AV Pads The solution to sloping roofs. 2.5° & 5° AV pads are available for 12" & 18" feet.

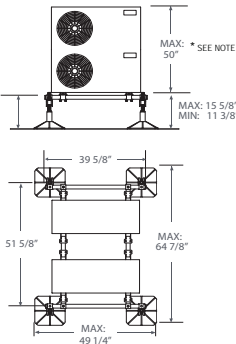
Leg Height Adjustment 11³/₈" - 15⁵/₈" : floor to top of framework.

Linear Adjustment The cross-bars which support the condenser units can slide along the plain bars into the position required, then are locked securely in place.

Equipment Clamps secure equipment and are fully adjustable on both sides of the cross-bars.

Leg Assembly Positioning The leg assembly is typically positioned outside the frame work, but can be placed inside the framework to avoid an obstruction, if necessary.


Foot Protection Covers are recommended for use on PVC membrane roof surfaces to prevent migration of plasticizers.



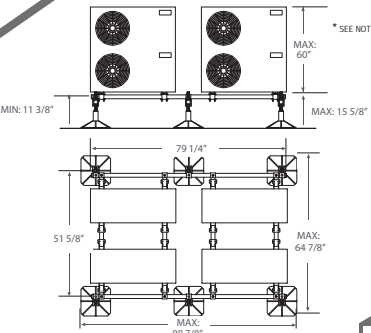
40" System Framework

SYSTEM COMPONENTS

- (2) Plain Bars 15/8" x 39 5/8"
- (2) Cross Bars 15/8" x 46 7/8"
- (4) Leg Assemblies with AV Pads 12" x 12"
- (2) Clamp Kits




RS #	STYLE	SUPPORT WT LBS	FRAME WT LBS	FRAME WIDTH
87701	(RES4840)	1072	93	48"



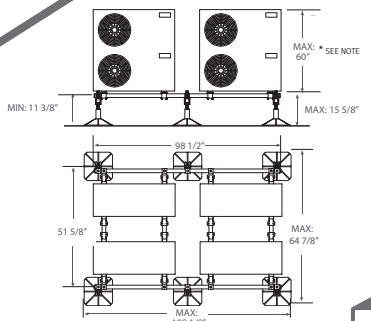
80" System Framework

SYSTEM COMPONENTS

- (2) Plain Bars 15/8" x 79 1/4"
- (4) Cross Bars 15/8" x 46 7/8"
- (6) Leg Assemblies with AV Pads 12" x 12"
- (4) Clamp Kits




RS #	STYLE	SUPPORT WT LBS	FRAME WT LBS	FRAME WIDTH
87702	(RES4880)	1608	154	48"



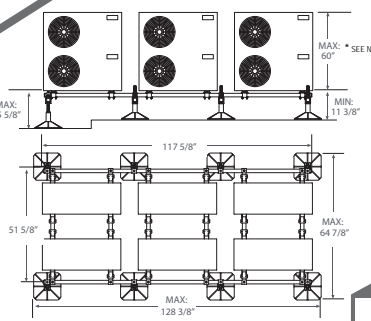
100" System Framework

SYSTEM COMPONENTS

- (2) Plain Bars 15/8" x 98 1/4"
- (4) Cross Bars 15/8" x 46 7/8"
- (6) Leg Assemblies with AV Pads 12" x 12"
- (4) Clamp Kits




RS #	STYLE	SUPPORT WT LBS	FRAME WT LBS	FRAME WIDTH
87703	(RES48100)	1608	154	48"



120" System Framework

SYSTEM COMPONENTS

- (2) Plain Bars 15/8" x 117 5/8"
- (4) Cross Bars 15/8" x 46 7/8"
- (8) Leg Assemblies with AV Pads 12" x 12"
- (6) Clamp Kits



RS #	STYLE	SUPPORT WT LBS	FRAME WT LBS	FRAME WIDTH
87707	(RES48100)	2144	214	48"

Big Foot is a registered trademark of Aspen Pumps Limited Company UK

Big Foot Systems is a registered trademark of Aspen Pumps Limited Company UK

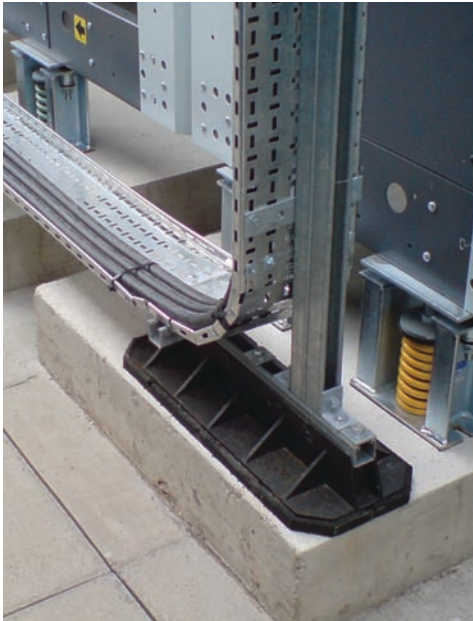
*NOTE: For condensers higher than 60" please consult RectorSeal.

Additional individual parts available.

Frame Supports

Ideal for constructing your own support system on rooftops, floors or slabs.

Frame Supports provide the base and essential hardware. This system can then be used for piping, tray systems or ductwork. The bases include recycled crumb rubber pads to cushion and protect the roof or other surface. Framework must be cut and fit on-site using readily available 1⁵/₈" strut and 1/2" threaded rod (not included).



87711	87712
H = 3 ³ / ₄ "	H = 3 ⁷ / ₈ "
W = 7"	W = 8 ¹ / ₂ "
L = 15 ³ / ₄ "	L = 23 ⁵ / ₈ "

RS # (ref. #)	DESCRIPTION	WT LBS.
87711 (RPS16)	MULTI FOOT 16"	2.3
87712 (RPS24)	MULTI FOOT 24"	4.2

Multi Foot can accept both 1/2" coarse threaded rod OR 1⁵/₈" strut (not included). Installer must provide rod or strut for custom on-site fabrication. Ideal for smaller systems. Sold individually.

Materials: Rubber/PVC

Multi Foot kit includes:
1 foot, 1 anti-vibration pad

Max weight capacity:
RPS16 - 170 lbs RPS24 - 312 lbs



87713	87714
H = 3 ³ / ₄ "	H = 4 ³ / ₄ "
W = 13 ¹ / ₄ "	W = 19"
L = 13 ¹ / ₄ "	L = 19"

RS # (ref. #)	DESCRIPTION	WT LBS.
87713 (RSPD12)	H-FRAME KIT 12"	14.5
87714 (RSPD18)	H-FRAME KIT 18"	28.5

H-Frame Kits accepts a standard 1 5/8" strut (not included) that fits securely into pockets provided in the foot. Any frame shape can then be built up for sturdy support. AV pads provide insulation from vibration, creeping and noise. Sold in pairs.

Materials: Rubber/PVC

H-Frame Kit includes:
2 feet, 2 AV pads, 2 strut inserts
2 L-Brackets, 4 M10 Bolts, 4 channel nuts

Max weight capacity:
RPSD12 - 200 lbs (per pair) RPSD18 - 330 lbs (per pair)

RD Series

Commercial Lineset Metal Ducting Systems

for VRF Linesets on Rooftops
& Vertical Building Surfaces



STRENGTH PROTECTION DURABILITY

RD Series commercial lineset ducting.
Designed to meet the demands of the expanding market trend towards VRF applications.



Triple hot dipped protection.

RD ducts and fittings feature ZAM® brand hot dip coating for excellent durability. ZAM® features three layers of protection - zinc, aluminum and magnesium.

Superior corrosion & scratch resistance.

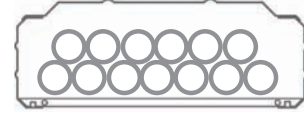
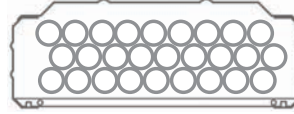
RD/ZAM hot coated steel sheet delivers corrosion resistance 10 to 20 times greater than that of ordinary galvanized steel sheet and 5 to 8 times more than zinc-aluminum alloy coated steel sheet when subjected to accelerated spray salt testing. ZAM® coating provides better scratch resistance.

Tough ZAM® coating out performs galvanized steel. Stainless steel duct & fittings are available by special order only. Optional anti-slip walking surface is available for select RD duct and fittings.

RD Series

Specifications & Technical Information

Maximum Lineset Capacity

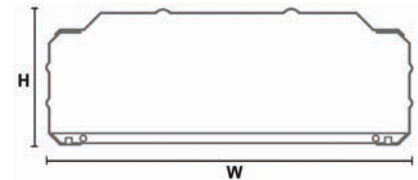


Duct Series Model type	Insulation Thickness		Tubing Diameter (Liquid) (Gas) in inches									
	Liquid	Gas	(3/8) (5/8)	(3/8) (3/4)	(1/2) (1)	(1/2) (1 1/8)	(5/8) (1 1/8)	(5/8) (1 1/4)	(3/4) (1 1/4)	(3/4) (1 1/2)	(7/8) (1 1/2)	(7/8) (1 5/8)
RD300	1/2"	1/2"	8	8	5	5	5	4	4	3	3	3
	1/2"	3/4"	5	4	3	3	3	2	2	2	2	2
RD450	1/2"	1/2"	12	11	9	9	7	7	6	5	5	5
	1/2"	3/4"	9	8	7	6	6	4	4	3	3	3
RD600	1/2"	1/2"	19	17	13	13	12	10	10	8	8	6
	1/2"	3/4"	10	9	8	7	7	6	6	5	4	4
RD900	1/2"	1/2"	25	24	19	18	16	14	14	10	10	8
	1/2"	3/4"	18	16	14	13	12	8	8	6	6	6

Table calculations utilize 75% area fill for linesets. Additional free area should be considered for complex installations.

Dimensions and Availability

Duct Series	Width (inches)	Height (inches)	In-Stock	Special Order
RD300	11 7/8"	5 1/8"	●	
RD450	17 3/4"	5 1/8"	●	
RD600	23 5/8"	5 1/8"	●	
RD900	35 3/8"	5 1/8"		●



In-Stock items are warehoused in Fall River, MA. For special order RD Series sizes or RDWK Walkway Styles, allow 16 weeks delivery time.

Maximum Load Capacity for Duct Base & Brackets

Duct Series	3ft. 3in. Bracket Spacing	6ft. 6.5in. Bracket Spacing
RD300	1187 lbs./ft.	883 lbs./ft.
RD450	775 lbs./ft.	572 lbs./ft.
RD600	565 lbs./ft.	413 lbs./ft.
RD900	349 lbs./ft.	248 lbs./ft.

Maximum Duct Cover Load:

Type RD - standard

102.40 lbs./sq. ft. or less.

Type RDWK - walkway

1024 lbs./sq. ft. or less.

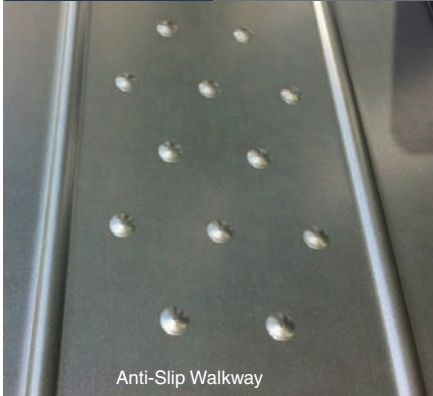
Maximum Load Capacity for Brackets Only

When brackets are fastened with 4 bolts tightened to the torque specification in column 1, column 2 (below) shows the maximum allowable load before the bracket / riser combination will shift and fail.

Torque (column 1)	Shift Starting Load (column 2)
21.70 lbs./ft.	1432.93 lbs./ft.

RD Series

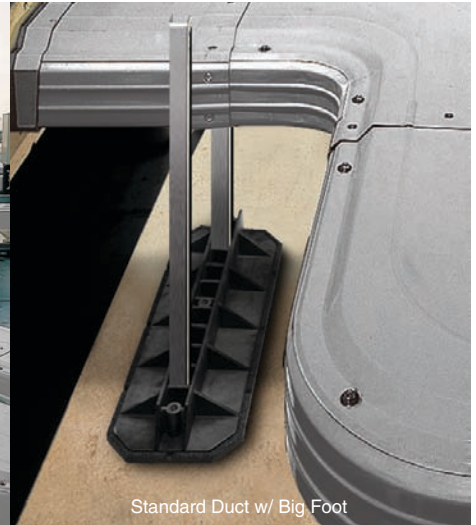
Ordering Information



Anti-Slip Walkway



Standard Duct



Standard Duct w/ Big Foot

Anti-slip walking surface is available for select RD duct and fittings.

Multiple support options are available, including Big Foot. Contact RectorSeal for details.

Standard Duct & Fittings

RS# (ref. #)	Description
86364 (RD-300)	300 duct 12" x 78"
86370 (RSJ-300)	300 fixed coupler 12"
86378 (RSJ-300)	300 coupler 12"
86379 (RSS-300)	300 telescopic coupler 12"
86360 (RCF-300)	300 45° vertical ELL 12"
86372 (RF-300)	300 45° flat ELL 12"
86362 (RCI-300)	300 90° inner vertical ELL 12"
86363 (RCO-300)	300 90° outer vertical ELL 12"
86371 (RE-300)	300 90° flat ELL 12"
86375 (RT-300)	300 TEE 12"
86376 (RSP-300)	300 wall inlet seal plate 12"
86377 (RWP-300)	300 wall flange 12"
86365 (REC-300)	300 end cap 12"
86464 (RD-450)	450 duct 18" x 78"
86470 (RSJ-450)	450 fixed coupler 18"
86478 (RFJ-450)	450 coupler 18"
86479 (RSS-450)	450 telescopic coupler 18"
86460 (RCF-450)	450 45° vertical ELL 18"
84672 (RF-450)	450 45° flat ELL 18"
86462 (RCI-450)	450 90° inner vertical ELL 18"
86463 (RCO-450)	450 90° outer vertical ELL 18"
86471 (RE-450)	450 90° flat ELL 18"
86475 (RT-450)	450 TEE 18"
86466 (RR-450-350)	450-300 reducer 18" to 12"
86476 (RSP-450)	450 wall inlet seal plate 18"
86477 (RWP-450)	450 wall flange 18"
86465 (REC-450)	450 end cap 18"
86384 (RD-600)	600 duct 24" x 78"
86390 (RSJ-600)	600 fixed coupler 24"
86398 (RFJ-600)	600 coupler 24"
86399 (RSS-600)	600 telescopic coupler 24"
86380 (RCF-600)	600 45° vertical ELL 24"
86392 (RF-600)	600 45° flat ELL 24"
86382 (RCI-600)	600 90° inner vertical ELL 24"
86383 (RCO-600)	600 90° outer vertical ELL 24"
86391 (RE-600)	600 90° flat ELL 24"
86395 (RT-600)	600 TEE 24"
86387 (RR-600-450)	600-450 reducer 24" to 18"

RS# (ref. #)	Description
86386 (RR-600-300)	600-300 reducer 24" to 12"
86396 (RSP-600)	600 wall inlet seal plate 24"
86397 (RWF-600)	600 wall flange 24"
86385 (REC-600)	600 end cap 24"
86438 (RPH-90)	Bracket to connect RD series to PD 90 Duct
86439 (RPH-120)	Bracket to connect RD series to PD 120 Duct
86484 (RD-900)	900 duct 36" x 78"
86490 (RSJ-900)	900 fixed coupler 36"
86498 (RFJ-900)	900 coupler 36"
86499 (RSS-900)	900 telescopic coupler 36"
86492 (RF-900)	900 45° flat ELL 36"
86482 (RCI-900)	900 90° inner vertical ELL 36"
86483 (RCO-900)	900 90° outer vertical ELL 36"
86488 (RR-900-600)	900-600 reducer 36" to 24"
86497 (RWF-900)	900 wall flange 36"
86485 (REC-900)	900 end cap 36"

Walkway Duct & Fittings Includes Reinforced Anti-Slip Surface

RS# (ref. #)	Description
86564 (RDWK-300)	300 walk duct 12" x 78"
86565 (RTWK-300)	300 walk TEE 12"
86562 (RFWK-300)	300 walk 45° flat ELL 12"
86561 (REWK-300)	300 walk 90° flat ELL 12"
86574 (RDWK-450)	450 walk duct 18" x 78"
86575 (RTWK-450)	450 walk TEE 18"
86572 (RFWK-450)	450 walk 45° flat ELL 18"
86571 (REWK-450)	450 walk 90° flat ELL 18"
86584 (RDWK-600)	600 walk duct 24" x 78"
86585 (RTWK-600)	600 wall TEE 24"
86582 (RFWK-600)	600 walk 45° flat ELL 24"
86581 (REWK-600)	600 walk 90° flat ELL 24"
86594 (RDWK-900)	900 walk duct 36" x 78"
86595 (RTWK-900)	900 walk TEE 36"
86592 (RFWK-900)	900 walk 45° flat ELL 36"
86591 (REWK-900)	900 walk 90° flat ELL 36"

- Non Stock Item: Special order only, approx. lead 16 weeks.

PD Series

PVC Duct Systems for Light Commercial VRF & Industrial Linesets

Functional & Professional Appearance

Light & Tough: UV & weather resistant heavy duty PVC construction resists deformation.

The PD series is designed to protect linesets from the elements, vandalism and mechanical damage while enhancing the external appearance of the entire system.

Currently available in 2 sizes, 3.5" diameter and 4.7" diameter, this series is designed primarily for use in smaller VRF systems where use of the larger metal RD series is not needed.

It can also be used in conjunction with the RD series to cover the linesets from the condenser to the point where they enter the Metal Duct system.

It is particularly effective for cladding any configuration of final connections into a condenser.

In addition, this series can be used for industrial linesets for both refrigeration and conventional Air Conditioning applications.

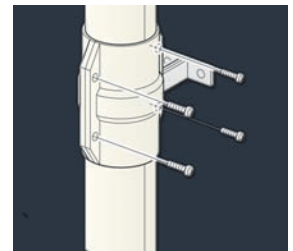
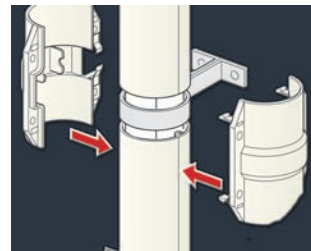
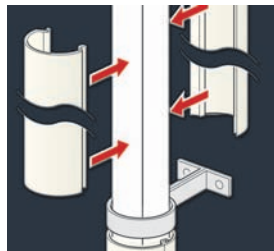
The PD Series can be fitted during the installation process or can easily be retrofitted after the linesets have been installed.

Easy Installation: All duct and fittings disassemble for ease of installation and mount with commercially available standard wall mounted pipe brackets.

Step 1: Clip duct into place over installed lineset.

Step 2: Install mounting couplers & fittings.

Step 3: Secure with provided screws.



Specifications & Technical Information

Application	Offset from vertical or horizontal surface
Temperature Range	-4°F to 140°F (surface temperature)
Material	Fire resistant & UV stable rigid PVC
Color	Ivory

Maximum Lineset Combinations

Item No.	Matching Pipe Clamp Size*1	Insulation Thickness		
		0.39" x 0.39" *2	0.39" x 0.78" *2	0.78" x 0.78"
PD-90	3.5" or less	∅0.62" x ∅1.12"	∅0.37" x ∅0.75"	-
PD-120	4.7" or less	∅0.75" x ∅1.50"	∅0.75" x ∅1.25"	∅0.37" x ∅0.75"

*1 System is designed for use with pipe clamps sized for steel pipe. Pipe clamps sized for PVC pipe can also be used provided their OD is 3.5" or less.

*2 Lineset capacity mentioned is based on Insulation thickness up to 0.75". For thicker insulation reduce Lineset capacity accordingly.

PD Series



Ordering Information

RS# (ref. #)	Description (Ivory)
86403 (PD90-1000-I)	PD 90 duct 3.5" x 38"
86413 (PD90-1500-I)	PD 90 duct 3.5" x 58"
86404 (PD120-1000-I)	PD 120 duct 4.7" x 38"
86414 (PD120-1500-I)	PD 120 duct 4.7" x 58"
86401 (PDE-90-I)	PD 90 - 90° ELL
86411 (PDE-120-I)	PD 120 - 90° ELL
86400 (PDJ-90-I)	PD 90 plain coupler
86402 (PDF-90-I)	PD 90 - 45° ELL
86412 (PDF-120-I)	PD 120 - 45° ELL
86410 (PDJ-120-I)	PD 120 plain coupler
86405 (PDT-90-I)	PD 90 TEE
86415 (PDT-120-I)	PD 120 TEE
86406 (PDC-90-I)	PD 90 end fitting
86416 (PDC-120-I)	PD 120 end fitting
86407 (PWP-90-I)	PD 90 wall flange
86417 (PWP-120-I)	PD 120 wall flange
86409 (PDB-120-I)	PD 90 mounting coupler
86419 (PDB-120-I)	PD 120 mounting coupler
86429 (PDL)	PD metal mounting clip
86420 (PDPC-90)	PD 90 pipe clamp 3.5"
86421 (PDPC-120)	PD 120 pipe clamp 4.7"
86425 (PDTM60)	PD TEE type mounting bracket, 2.5" long
86426 (PDTM80)	PD TEE type mounting bracket, 3" long
86427 (PDTM100)	PD TEE type mounting bracket, 4" long

For Submittal Data Sheets, visit
www.rectorseal.com/qr/epsb.html
 or scan this code.



GasGuard™ Keyless Locking Refrigerant Gas Caps



The simplest way to comply with IMC & IRC codes for protection against refrigerant gas misuse.



1/4" Thread

Gray

RS #	DESCRIPTION	QTY
86640	Socket Tool / 2 Free Caps	10
86641	Universal 10 pk	10
86643	Universal 50 pk	1
86646	Universal 100 pk	1

5/16" Thread

Available in Gray Only

86621	Socket Tool / 2 Free Caps	10
86650	Universal 10 pk	10



1/4" Thread

Green

RS #	DESCRIPTION	QTY
86610	Socket Tool / 2 Free Caps	10
86611	R22 10 pk	10
86613	R22 50 pk	1
86616	R22 100 pk	1



1/4" Thread

Pink

RS #	DESCRIPTION	QTY
86630	Socket Tool / 2 Free Caps	10
86631	R410 10 pk	10
86633	R410 50 pk	1
86636	R410 100 pk	1

It's in the Code. Effective February 2009 the International Mechanical Code and International Residential Code now require that all outdoor access ports on AC Refrigerant circuits be made tamper resistant.

International Mechanical Code 1101.10 -

Locking access port caps. "Refrigerant circuit access ports located outdoors shall be fitted with locking-type tamper resistant caps."

International Residential Code M1411.6 -

Locking access port caps. "Refrigerant circuit access ports located outdoors shall be fitted with locking-type tamper resistant caps."

Surface Mounted Monobloc Kits



Lime
S E R I E S

Mini & Maxi pump kits

Original elbow pump. Quick installation. Completely reversible.



(Patent No. 6,976,367)

RS # (ref. #)

UNIVERSAL VOLTAGE MINI KITS	LINESET KIT	POWER SUPPLY & CONSUMPTION			WT LBS.
83849 (ASP-ML-UNI)	Slimline Ivory	100-250 VAC	.10-.16A	16W	4
83859 (ASP-MLF-UNI)	Fortress White	100-250 VAC	.10-.16A	16W	4
SILENT PLUS MINI KITS					
83851 (ASP-ML-115-SP)	Slimline Ivory	115 VAC	.16A	13.5W	4
83852 (ASP-ML-230-SP)	Slimline Ivory	230 VAC	.10A	15W	4
83860 (ASP-MLF-115-SP)	Fortress White	115 VAC	.16A	13.5W	4
83861 (ASP-MLF-230-SP)	Fortress White	230 VAC	.10A	15W	4
MAXI KITS					
83830 (ASP-MAXLF-115)	Fortress White	115 VAC	.23A	18W	4
83831 (ASP-MAXLF-230)	Fortress White	230 VAC	.10A	15W	4
OEM MINI KITS					
83842 (ASP-MLOEM-115)	No Duct	115 VAC	.16A	13.5W	2
83843 (ASP-MLOEM-230)	No Duct	230 VAC	.10A	15W	2
OEM MAXI KITS					
83834 (ASP-MAXOEM-115)	No Duct	115 VAC	.16A	13.5W	2
83835 (ASP-MAXOEM-115)	No Duct	230 VAC	.10A	15W	2

Duty Cycle:
Mini - continuous
Maxi - 66% 10 mins on / 5 mins off

Maxi - 10 GPH @ zero head
3.8 GPH @ 49ft head
Up to 60,000 BTU/hr

Capacity:
Mini - 3.2 GPH @ zero head
0.8 GPH @ 33ft head
Up to 30,000 BTU/hr

Maximum head: Mini - 33ft Maxi - 49ft

Sound level: Mini - 27dB(A) Maxi - 35dB(A)
Silent Plus - 21dB(A)



White
S E R I E S

Mini pump kits

Monobloc pump assembly. Surface mounts directly below evaporator.



RS # (ref. #)

UNIVERSAL VOLTAGE KITS	POWER SUPPLY & CONSUMPTION			WT LBS.
83939 (ASP-MW-UNI)	100-250 VAC	.11-.18A	16W	2
MINI KITS				
83931 (ASP-MW-115)	115 VAC	.18A	15W	2
83931 (ASP-MW-230)	230 VAC	.11A	16W	2

Duty Cycle: Continuous

Maximum head: 33ft

Capacity:
2.8 GPH @ zero head
0.8 GPH @ 33ft head
Up to 30,000 BTU/hr

Sound level: 21dB(A)



For Submittal Data Sheets, visit
www.rectorseal.com/qr/epsup.html
or scan this code.

ASPEN® is a registered trademark of Aspen Oldco Limited Company UK
Mini White is a registered trademark of Aspen Pumps Limited Company UK

Two-Component Split-Type Concealed Condensate Pump Kits



Aqua SERIES

Mini pump kits

Ultra-slim profile. Fits inside evaporator or lineset cover.



RS # (ref. #)	POWER SUPPLY & CONSUMPTION			WT LBS.
UNIVERSAL VOLTAGE KITS				
83809 (ASP-MA-UNI)	100-250 VAC	.07-13A	16W	2
SILENT PLUS KITS				
83811 (ASP-MA-115-SP)	115 VAC	.13A	15W	2
83812 (ASP-MA-230-SP)	230 VAC	.07A	16W	2

Aspen offers the only pump in the world designed specifically to fit the LG Art Cool Picture Frame unit. Please contact RectorSeal for more information.

Duty Cycle:
50% duty cycle
5 mins on / 5 mins off

Capacity:
3.7 GPH @ zero head,
0.8 GPH @ 33ft head
Up to 24,000 BTU/hr

Maximum head: 33ft

Suction lift: 5ft

Sound level: Mini - 24dB(A)
Silent Plus - 19dB(A)



Orange SERIES

Mini & Maxi pump kits

Installation flexibility. Proven reliability.



RS # (ref. #)	POWER SUPPLY & CONSUMPTION			WT LBS.
UNIVERSAL VOLTAGE MINI KITS				
83909 (ASP-MO-UNI)	100-250 VAC	.11-18A	16W	2
SILENT PLUS MINI KITS				
83911 (ASP-MO-115-SP)	115 VAC	.18A	15W	2
83912 (ASP-MO-230-SP)	230 VAC	.11A	16W	2
MAXI KITS				
83901 (ASP-MAXO-115)	115 VAC	.28A	21W	2
83902 (ASP-MAXO-230)	230 VAC	.15A	21W	2

Duty Cycle:
Mini - continuous
Maxi - 50% 5 mins on / 5 mins off

Capacity:
Mini - 3.2 GPH @ zero head
0.8 GPH @ 33ft head
Up to 24,000 BTU/hr
Maxi - 10 GPH @ zero head
3.8 GPH @ 50ft head
Up to 60,000 BTU/hr

Maximum head:
Mini - 33ft Maxi - 50ft

Suction lift: 5ft

Sound level:
Mini - 26dB(A) Maxi - 35dB(A)
Silent Plus - 19dB(A)



Purple SERIES

Mechanical & Universal Peristaltic pump kits

The ideal condensate pump for remote location applications.



RS # (ref. #)	POWER SUPPLY & CONSUMPTION			WT LBS.
UNIVERSAL SENSOR KITS				
83965 (ASP-PERI-UNI-115)	115 VAC	.20A	46W	6
83966 (ASP-PERI-UNI-230)	230 VAC	.20A	46W	6
MECHANICAL SENSOR KITS				
83963 (ASP-PERI-MECH-115)	115 VAC	.20A	46W	6
83964 (ASP-PERI-MECH-230)	230 VAC	.20A	46W	6
PERI REPLACEMENT TUBE				
83892 (ASP-PERITUBE)				

Duty Cycle:
100% - continuous

Capacity:
1.65 GPH @ 39ft head,
BTU/hr: up to 24,000

Maximum head: 39ft
Maximum water temp: 104° F
Suction lift: 10ft
Sound level: 47dB(A)



Magnetic Reed Condensate Overflow Switches



- FEATURES**
- Primary drains or auxiliary drain outlets
 - Magnetic reed switch
 - Install vertically or horizontally
 - Connect to either red or yellow wire

RS #	DESCRIPTION	QTY
97632	MODEL SS1	24

- Detects clogged A/C condensate drains and shuts off the system to prevent water damage to floors, walls and ceilings
- Can be installed horizontally or vertically, inline or on the primary pan's auxiliary drain outlet by using the included 3/4" adapter, bushing and cap
- Can be installed on a sloping line and does not need to be level or plumb

US Patent No. 6,442,955



- FEATURES**
- Primary pan auxiliary outlet
 - Magnetic reed switch
 - Connect to either red or yellow wire

RS #	DESCRIPTION	QTY
97637	MODEL SS2	24

- Detects clogged A/C condensate drains and shuts off the system
- Using the 3/4" adapter the SS2 can be installed on the auxiliary outlet of the primary drain pan
- Easy access to the switch and the primary drain line for service

US Patent No. 6,442,955



- FEATURES**
- Primary & auxiliary drain pans
 - Magnetic reed switch
 - Connect to either red or yellow wire

RS #	DESCRIPTION	QTY
97647	MODEL SS3	24

- Detects clogged A/C condensate drains and shuts off the system
- Steel mounting bracket clips firmly over the edge of most drain pans
- Slim-profile can be installed on primary or auxiliary drain pans

US Patent No. 6,698,215



- FEATURES**
- Drain pans w/ slanted sides or lipped edges
 - Magnetic reed switch
 - Connect to either red or yellow wire

RS #	DESCRIPTION	QTY
97626	MODEL SS4	24

- Detects clogged A/C condensate drains and shuts off the system
- Adjustable clip to fit over slanted sides and lipped edges of primary and auxiliary drain pans



- FEATURES**
- Systems with communicating thermostats
 - Magnetic reed switch
 - Connect to either red or yellow wire

RS #	DESCRIPTION	QTY
97652	MODEL SS3-CT	24

- Detects clogged A/C condensate drains
- Normally open condensate overflow switch can be connected to the accessory wires of the communicating thermostat
- Installed on primary or auxiliary drain pans

US Patent No. 6,698,215



- FEATURES**
- Plenum rated
 - Magnetic reed switch
 - Connect to either red or yellow wire

RS #	DESCRIPTION	QTY
97640	MODEL SS2AP	50

- Detects clogged A/C condensate drains and shuts off the system
- Schedule 40 CPVC, plenum rated and listed to UL-2043
- Use 3/4" adapter to install on the auxiliary outlet of the primary drain pan

US Patent No. 6,442,955





- FEATURES**
- Dual sensors
 - Simple 2-wire design
 - Onboard LED indicator
 - Connect to either red or yellow wire

RS #	DESCRIPTION	QTY
97692	SS 103 E	24

- For primary drain line and auxiliary drain pan or primary drain line and auxiliary drain outlet • Can be installed horizontally or vertically or inline • Onboard LED indicates the condition of the unit at a glance • No moving parts



- FEATURES**
- Commercial rooftop downflow units
 - Plenum rated wire
 - Simple 2-wire design
 - Onboard LED indicator
 - Connect to either red or yellow wire

RS #	DESCRIPTION	QTY
97693	SS 500 EP	24

- Install on primary drain pan when plenum rating is needed • Small size and slim profile great for use on commercial rooftop downflow units



- FEATURES**
- Sensor connects to indoor mini split units
 - Attaches to pan or coil with unique bracket
 - Onboard LED indicator can be mounted to side of unit
 - No batteries required

RS #	DESCRIPTION	QTY
97622	SS 610 E	12

- Designed for mini split systems • For installation directly on primary drain pan or clipped to coil above primary drain pan • Multi-voltage • Can be wired in both normally open & normally closed systems



- FEATURES**
- Works in any position directly in the secondary drain pan
 - Universal puck works in all secondary drain pans
 - Onboard LED indicator

RS #	DESCRIPTION	QTY
97695	SS 700 E	12

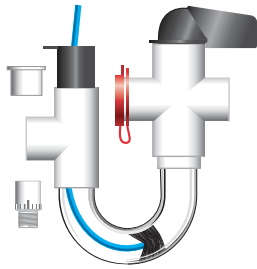
- Designed to sit directly in a secondary drain pan, eliminating screws and clips • Multiple position option for the sensor and provides adjustable heights • Great for use in plastic overflow pans with round edges





SmartTrap™ Kits

Float switch overflow protection. Clear cleanable trap.



RS #	DESCRIPTION	SIZE
83210	EZT-210	3/4"

Standard SmartTrap kit

Fits most applications requiring automatic shut down.
10 per carton.

Includes: 3/4" Standard Trap, 3/4" cross, 3/4" red cap, 1"x 3/4" bushing, 3/4" tee, 3/4" black stub, 3/4" male adapter, float switch assembly, 48" cable, cleaning brush, 1" drop

UltraTrap™ Waterless Condensate Traps



RS #	DESCRIPTION	SIZE
83180	EZT-180	5/8"

Mini waterless in-line trap

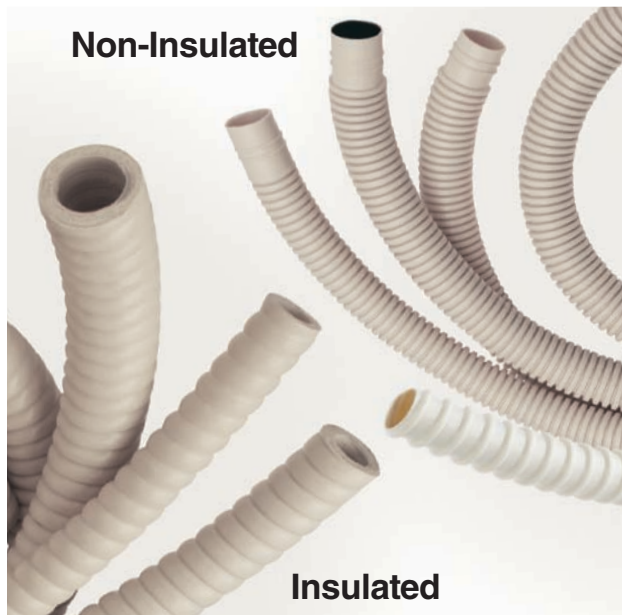
Sized for use in ductless mini-split applications. Use on any mini-split evaporator with gravity drain.

Permits free condensate flow while blocking odors, noise and insects. Freeze resistant. Only 2-3/4" long. 10 per carton.

Includes: 5/8" MiniTrap, 9/16" adapter



Mini-Split Condensate Drain Hose and Fittings



RS# (ref. #)	Description
83001 (DH-14)	14mm (9/16") drain hose 164' coil lite
83003 (DH-16S)	16mm (5/8") drain hose 20' coil standard
83002 (DH-16)	16mm (5/8") drain hose 164' coil standard
83004 (DHQ-16)	16mm (5/8") UV resistant drain hose 164' coil outdoor
83005 (DSB-20)	16mm (5/8") smooth bore drain hose 65' coil
83006 (DSB-20)	20mm (3/4") smooth bore drain hose 65' coil
83011 (DSH-14)	14mm (9/16") drain hose 65' coil insulated
83012 (DSH-20N)	20mm (3/4") drain hose 65' coil insulated
83013 (DSH-25N)	25mm (1") drain hose 65' coil insulated
83022 (DY-16)	Vented drain WYE 5/8"
83020 (DSH-14-16V)	Pipe adaptor dsh14 or dh16 hose to 3/4" PVC
83021 (DSH-14J)	14mm (9/16") coupler for dsh14 hose
83023 (DSH-20NJ)	20mm (3/4") coupler for dsh20 hose
83024 (DSH-20NV)	Pipe adaptor for dsh20 hose to 3/4" PVC
83016 (HN-75-I)	UV resistant non adhesive wrap 3" x 70'
83017 (NFP-75)	Wall sleeve 3"x5"-7"
83015 (FPS-65)	5° Inclined wall sleeve 2-1/2" x up to 8"
83028 (DHJ-14)	1/2" Drain hose coupler standard
83029 (DHJ-16)	5/8" Drain hose coupler standard
83031 (DSH-14C)	Insulated A/C drain hose adapter coupling

STANDARD HOSE

Corrugated construction provides maximum flexibility, eliminates crimping; interior use only.

Smooth Bore

Resists clogging, reduces resistance and maximizes condensate flow, less flexible than standard hose.

UV Resistant

Resists deterioration from Sunlight, suitable for exterior applications.

Insulated

Eliminates sweating that can occur in dead airspace.

SLIMDUCT®

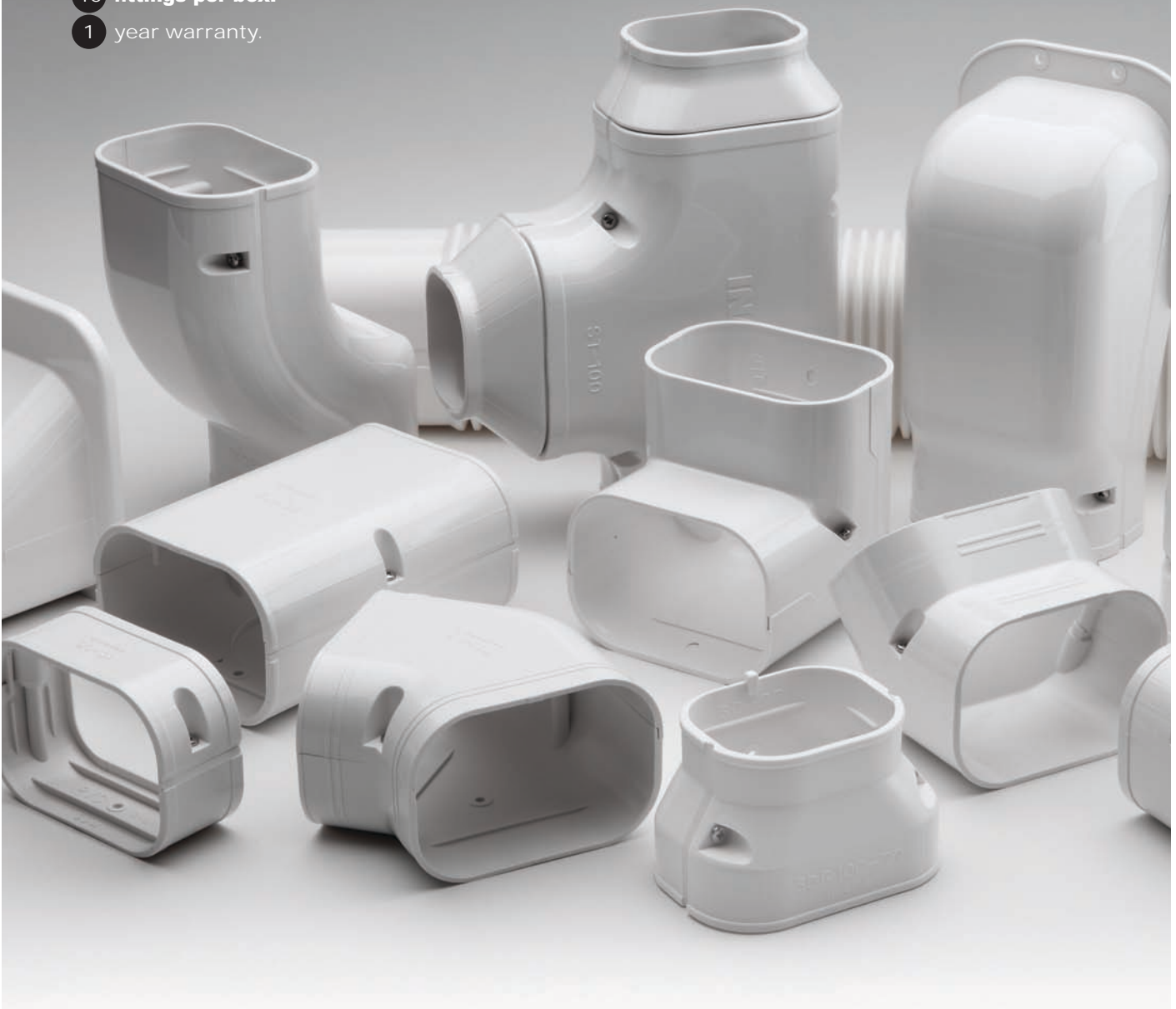
Lineset Ducting System

Lineset Covers

**Attractive wall mounted ducting system
for residential & light commercial linesets.**

SlimDuct: • Heavy weight professional grade • Gloss finish

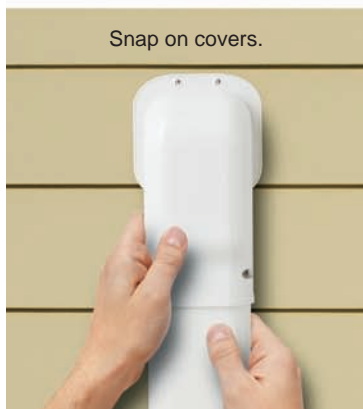
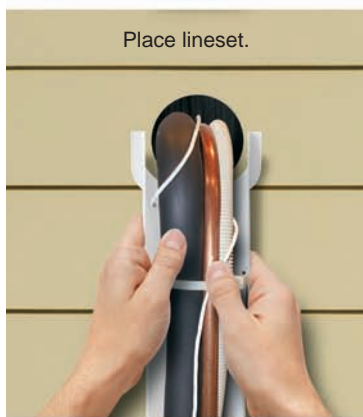
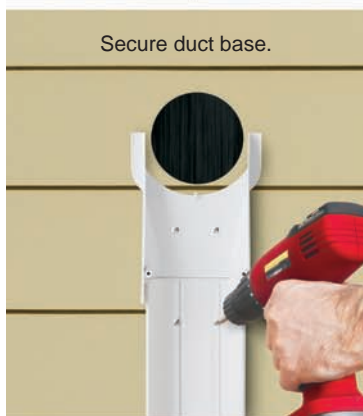
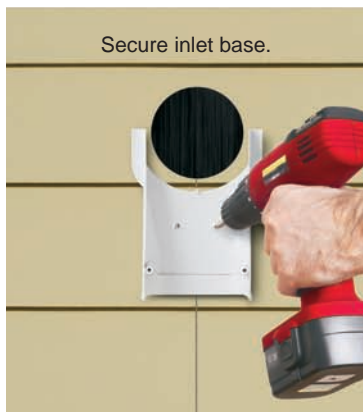
- 3 sizes. 3 1/2", 4" and 5 1/2"
- 3 colors. Choose white, ivory or brown.
- 15 fittings. Assures complete flexibility of installation
- 78" lengths. 5 lengths per box
- 10 fittings per box.
- 1 year warranty.



SLIMDUCT®

Lineset Ducting System

Quick Installation



Application. Slimduct® is perfect for minisplits, high velocity and conventional ducted split air conditioning systems.

Strong. Slimduct® ducting is extruded with our special formula rigid polyvinyl chloride. Slimduct is UV, weather & fire resistant, with a temperature range from -4°F to 140°F. The result is a long lasting quality product that will remain attractive and provide protection for many years.

Protective. Slimduct® protects lineset, wiring and drain hose from weather, vandalism, pet and pest damage.

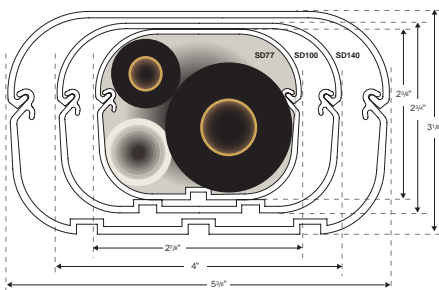
Easy to install. Slimduct® installs quickly, and can be easily accessed for repairs or replacement of the lineset.

Stylish. Slimduct® offers three duct sizes. Each size is available in three neutral colors - white, ivory and brown. Slimduct colors are designed to compliment any natural stone, brick, wood, stucco, vinyl or painted facade, and can be used for both residential or commercial Installations.

Technical Information

Weather Resistance
Weather resistant PVC, UV stabilized & fire resistant. Tested to over 2,000 hours.

Temperature Range
-4°F to 140°F



Size Specifications

Choose duct size
SD77, SD100 or SD140.

3 Colors for Residential & Commercial Applications

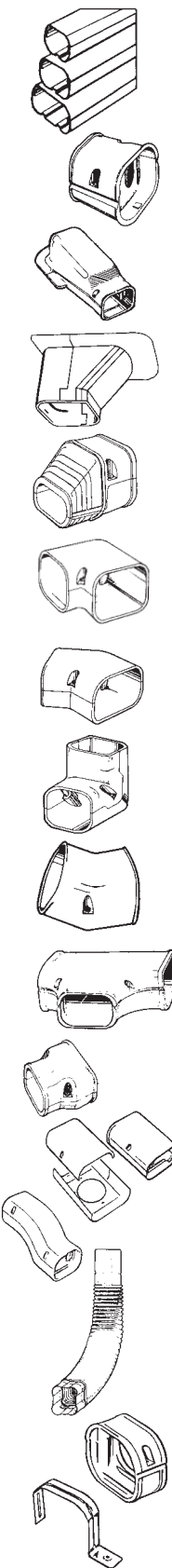


SLIMDUCT is a registered trademark of Inaba Denki Sangyo Co.

SLIMDUCT®

Lineset Ducting System

Ordering Information



RS# (ref. #) White	RS# (ref. #) Ivory	RS# (ref. #) Brown	Description	L	W	H
85004 (SD-77-W)	85024 (SD-77-I)	85064 (SD-77-B)	SD Slimduct 78" length 77	78"	2 ¹ / ₈ "	2 ³ / ₈ "
85104 (SD-100-W)	85124 (SD-100-I)	85164 (SD-100-B)	SD Slimduct 78" length 100	78"	4"	2 ³ / ₄ "
85204 (SD-140-W)	85224 (SD-140-I)	85264 (SD-140-B)	SD Slimduct 78" length 140	78"	5 ⁵ / ₈ "	3 ¹ / ₄ "
86010 (SJ-77-W)	86030 (SJ-77-I)	85370 (SJ-77-B)	SJ coupler 77	2"	3 ³ / ₈ "	2 ⁵ / ₈ "
86110 (SJ-100-W)	86130 (SJ-100-I)	85470 (SJ-100-B)	SJ coupler 100	2 ¹ / ₂ "	4 ¹ / ₄ "	3"
86210 (SJ-140-W)	86230 (SJ-140-I)	85570 (SJ-140-B)	SJ coupler 140	3 ¹ / ₂ "	5 ³ / ₄ "	3 ³ / ₈ "
86016 (SW-77-W)	86036 (SW-77-I)	85376 (SW-77-B)	SW wall inlet 77	8"	4 ³ / ₈ "	3"
86116 (SW-100-W)	86136 (SW-100-I)	85476 (SW-100-B)	SW wall inlet 100	8 ³ / ₄ "	5"	3 ³ / ₈ "
85216 (SW-140-W)	85236 (SW-140-I)	85576 (SW-140-B)	SW wall inlet 140	11"	6 ¹ / ₂ "	3 ³ / ₈ "
85014 (SP-77-W)	85034 (SP-77-I)	85374 (SP-77-B)	SP soffit inlet 77	5 ¹ / ₈ "	4 ³ / ₈ "	5 ¹ / ₈ "
86114 (SP-100-W)	86134 (SP-100-I)	85474 (SP-100-B)	SP soffit inlet 100	5 ³ / ₈ "	5 ³ / ₈ "	5 ³ / ₈ "
85214 (SP-140-W)	85234 (SP-140-I)	85574 (SP-140-B)	SP soffit inlet 140	5 ³ / ₄ "	6 ¹ / ₈ "	5 ³ / ₄ "
85007 (SE/SEN-77-W)	86027 (SE/SEN-77-I)	85367 (SE/SEN-77-B)	SEN end fitting 77	1 ³ / ₄ "	3 ¹ / ₄ "	2 ⁵ / ₈ "
86107 (SEN-100-W)	85127 (SEN-100-I)	85467 (SEN-100-B)	SEN end fitting 100	4 ¹ / ₂ "	4 ¹ / ₄ "	3"
86207 (SEN-140-W)	86227 (SEN-140-I)	85567 (SEN-140-B)	SEN end fitting 140	6"	5 ³ / ₄ "	3 ³ / ₈ "
86011 (SK-77-W)	86031 (SK-77-I)	85371 (SK-77-B)	SK 90° flat ELL 77	5"	2 ⁵ / ₈ "	5"
86111 (SK-100-W)	86131 (SK-100-I)	85471 (SK-100-B)	SK 90° flat ELL 100	6"	3"	6"
85211 (SK-140-W)	85231 (SK-140-I)	85571 (SK-140-B)	SK 90° flat ELL 140	7 ¹ / ₂ "	3 ³ / ₈ "	7 ¹ / ₂ "
85012 (SKF-77-W)	85032 (SKF-77-I)	85372 (SKF-77-B)	SKF 45° flat ELL 77	4 ¹ / ₂ "	3 ¹ / ₄ "	2 ⁵ / ₈ "
86112 (SKF-100-W)	86132 (SKF-100-I)	85472 (SKF-100-B)	SKF 45° flat ELL 100	5 ¹ / ₄ "	4 ¹ / ₄ "	3"
85212 (SKF-140-W)	85232 (SKF-140-I)	85572 (SKF-140-B)	SKF 45° flat ELL 140	6 ¹ / ₄ "	5 ³ / ₄ "	3 ³ / ₈ "
86002 (SC-77-W)	86022 (SC-77-I)	85362 (SC-77-B)	SC 90° vertical ELL 77	4"	3 ¹ / ₄ "	4"
86102 (SC-100-W)	86122 (SC-100-I)	85462 (SC-100-B)	SC 90° vertical ELL 100	4 ⁵ / ₈ "	4 ¹ / ₄ "	4 ⁵ / ₈ "
85202 (SC-140-W)	85222 (SC-140-I)	85562 (SC-140-B)	SC 90° vertical ELL 140	5"	5 ³ / ₄ "	5"
85000 (SCF-77-W)	85020 (SCF-77-I)	85360 (SCF-77-B)	SCF 45° vertical ELL 77	4 ¹ / ₈ "	3 ¹ / ₄ "	2 ⁵ / ₈ "
86100 (SCF-100-W)	86120 (SCF-100-I)	85460 (SCF-100-B)	SCF 45° vertical ELL 100	4 ³ / ₈ "	4 ¹ / ₄ "	3"
85200 (SCF-140-W)	85220 (SCF-140-I)	85560 (SCF-140-B)	SCF 45° vertical ELL 140	4 ⁵ / ₈ "	5 ³ / ₄ "	3 ³ / ₈ "
86015 (ST-77-W)	86035 (ST-77-I)	85375 (ST-77-B)	ST TEE 77	6 ¹ / ₂ "	4 ¹ / ₈ "	2 ⁵ / ₈ "
86115 (ST-100-W)	86135 (ST-100-I)	85475 (ST-100-B)	ST TEE 100	7 ¹ / ₈ "	6"	3"
85215 (ST-140-W)	85235 (ST-140-I)	85575 (ST-140-B)	ST TEE 140	9 ¹ / ₈ "	7 ¹ / ₈ "	3"
85106 (SDR-100-77-W)	85126 (SDR-100-77-I)	85466 (SDR-100-77-B)	SDR reducer 100-77	2 ¹ / ₂ "	4 ¹ / ₄ "	3"
86206 (SDR-140-100-W)	86226 (SDR-140-100-I)	85566 (SDR-140-100-B)	SDR reducer 140-100	4"	5 ³ / ₄ "	3 ³ / ₈ "
85119 (SJA-100-W)	85139 (SJA-100-I)	85439 (SJA-100-B)	SJA rear entry coupler 100	5 ¹ / ₈ "	4 ¹ / ₄ "	3"
86219 (SJA-140-W)	86299 (SJA-140-I)	85579 (SJA-140-B)	SJA rear entry coupler 140	6 ³ / ₈ "	5 ⁵ / ₈ "	3 ¹ / ₄ "
86018 (SIF-77-W)	86038 (SIF-77-I)	85378 (SIF-77-B)	SIF 2" fixed offset 77	7 ¹ / ₈ "	3 ¹ / ₄ "	3 ¹ / ₄ "
86118 (SIF-100-W)	86138 (SIF-100-I)	85478 (SIF-100-B)	SIF 2" fixed offset 100	7 ¹ / ₈ "	4 ¹ / ₄ "	4 ¹ / ₄ "
85008 (SF-77-500-W)	85028 (SF-77-500-I)	85368 (SF-77-500-B)	SF flexible ELL 20" length 77-500	19 ¹ / ₂ "	3"	2 ¹ / ₂ "
86108 (SF-100-100-W)	86128 (SF-100-100-I)	86468 (SF-100-100-B)	SF flexible ELL 31" length 100-800	31 ¹ / ₂ "	4"	2 ³ / ₄ "
85208 (SF-140-800-W)	85228 (SF-140-800-I)	85568 (SF-140-800-B)	SF flexible ELL 31" length 140-800	31 ¹ / ₂ "	5 ³ / ₄ "	3 ³ / ₈ "
-	85188 (SF-77-1000-I)	-	SF flexible ELL 39" length ivory 77-1000	2 ³ / ₄ "	3"	2 ¹ / ₂ "
85009 (SFJ-77-W)	85029 (SFJ-77-I)	85369 (SFJ-77-B)	SFJ flexible adaptor 77	1 ³ / ₈ "	3 ¹ / ₄ "	3 ¹ / ₄ "
85109 (SFJ-100-W)	85129 (SFJ-100-I)	85469 (SFJ-100-B)	SFJ flexible adaptor 100	1 ¹ / ₂ "	4 ¹ / ₄ "	4 ¹ / ₄ "
86105 (SWC-100-W)	86125 (SWC-100-I)	-	SD 3.75" Slim wall flange 100	5 ⁵ / ₈ "	1 ⁵ / ₈ "	6 ¹ / ₈ "
85205 (SWC-140-W)	85225 (SWC-140-I)	-	SD 5.5" Slim wall flange 140	7 ¹ / ₈ "	1 ⁵ / ₈ "	8 ² / ₃ "
86005 (SWC-77-W)	86025 (SWC-77-I)	-	SD 2.75" Slim wall flange 77	4 ¹ / ₂ "	1 ⁵ / ₈ "	5"
86117 (SWM-100-W)	86137 (SWM-100-I)	85477 (SWM-100-B)	SD 3.75" Flanged wall inlet 100	6 ¹ / ₂ "	3 ³ / ₄ "	8 ¹ / ₂ "
86017 (SWM-77-W)	86037 (SWM-77-I)	85377 (SWM-77-B)	SD 2.75" Flanged wall inlet 77	5 ³ / ₄ "	3 ³ / ₈ "	7 ³ / ₈ "
85080 (SN-77-W)	85085 (SN-77-I)	85395 (SN-77-B)	SD 2.75" Twist ELL 77	5 ¹ / ₂ "	5 ¹ / ₂ "	3 ³ / ₁₆ "
86001 (SFS-77)	-	-	SFS saddle for flexible ELL (stainless steel) 77	1 ³ / ₈ "	3 ¹ / ₄ "	2 ¹ / ₂ "
86101 (SFS-100)	-	-	SFS saddle for flexible ELL (stainless steel) 100	1 ¹ / ₂ "	3 ¹ / ₄ "	3"
86201 (SFS-140)	-	-	SFS saddle for flexible ELL (stainless steel) 140	1 ¹ / ₂ "	4 ¹ / ₄ "	3"
86299 (SL-300)	-	-	SL strap kit for line sets	-	-	-



Universal Mounting Brackets for Mini-Split Condensers



H = 18"
W = 33 1/2"
D = 22" WBB500 = 24"



H = 31 1/4"
W = 39 1/2"
D = 20 1/4"

RS # (ref. #)	DESCRIPTION	WT LBS.
87733 (WBB300)	WALL BRACKET	11
87734 (WBB300SS)	WALL BRACKET	14
87735 (WBB500)	WALL BRACKET	14

Sliding cross bar gives this bracket an exceptional equipment width range. Available in stainless steel. Includes level for convenience.

Finish:

WBB300 - Powdercoat
WBB300SS - Stainless
WBB500 - Powdercoat

Min/Max mounting width:
9 3/4" - 30"
Min/Max mounting depth:
10 1/2" - 16"
Max load capacity:
WBB300/WBB300SS - 300 lbs
WBB500 - 500 lbs

RS # (ref. #)	DESCRIPTION	WT LBS.
87732 (PCK30)	HEAVY DUTY WALL BRACKET	30

This bracket includes extra integral cross bracing for the ultimate in stability.

Finish: Galvanized

Min/Max mounting width:
15 3/4" - 35 1/4"
Min/Max mounting depth:
9 3/4" - 15"
Max load capacity: 330 lbs



H = 22"
W = 39 1/2"
D = 22"



87741	87744
H = 36 1/4"	H = 36 1/4"
W = 15 1/2"	W = 17"
D = 32"	D = 36"

87741 (CBYW3)	DUPLEX STAND	24
87744 (CWGL)	DUPLEX STAND	24

Securely mounts two condenser units, one above the other. Includes anti-slip rubber feet.

Finish: Powdercoat

Min/Max mounting width:
CBYW3 - 11 7/8" - 27 1/2"
CWGL - 15 3/4" - 31 1/2"

Min/Max mounting depth:
CBYW3 - 6 1/4" - 13 3/8"
CWGL - 7 7/8" - 15"
Max weight capacity:
CBYW3 - 76 lbs x 2
CWGL - 176 lbs x 2

87745 (WRB250)	SLOPE STAND	13
----------------	-------------	----

Adjustable bracket follows roof slope up to 45 degrees or 12 inch pitch providing a level mounting surface. Includes level.

Finish: Powdercoat

Min/Max mounting width:
6" - 35"
Min/Max mounting depth:
10" - 19"
Max weight capacity: 250 lbs



H = 11 1/4"
W = 29 1/2"
D = 16 3/4"



87743	87746
H = 4-12 1/4"	H = 12 1/2"
W = 31 3/4"	W = 48 3/4"
D = 15"	D = 21"

87743 (CNG)	SLAB STAND	11
87746 (PCNG63)	SLAB STAND	32

Raises condenser up above a flat surface. Each leg is independently adjustable for uneven surfaces. Anti-slip rubber feet.

Finish: 87743 - Powdercoat
87746 - Galvanized

Min/Max mounting width:
87743 - 11 3/4" - 27 1/2"

87746 - 28 3/4" - 38 1/2"
Min/Max mounting depth:
87743 - 6 1/4" - 13 1/4"
87746 - 23 1/4" - 30 1/4"
Max weight capacity:
87743 - 176 lbs
87746 - 440 lbs

87731 (CBZG)	UNDER WINDOW BRACKET	9
--------------	----------------------	---

A top cross bar allows this bracket to be installed under a window or other obstacle. Ideal for window type air conditioner support.

Finish: Galvanized

Min/Max mounting width:
11 3/4" - 27 1/2"
Min/Max mounting depth:
6 1/4" - 13"
Max load capacity: 176 lbs



H = 28 1/2"
W = 31 1/2"
D = 20"

87742 (CDF)	UNDER SLAB HANGER BRACKET	12
-------------	---------------------------	----

Permits condenser to be supported under a slab, overhang or structural member.

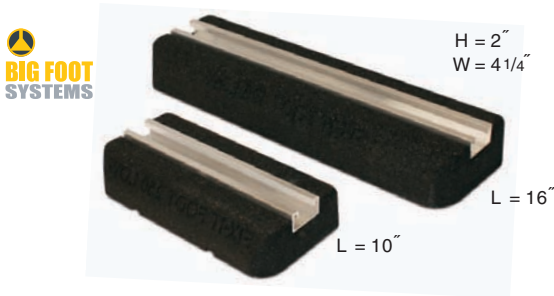
Finish: Powdercoat

Min/Max mounting width:
12" - 28"

Min/Max mounting depth:
6" - 13"
Max weight capacity:
132 lbs

Risers

Ideal for simple and secure mounting of small and large piping systems, ductwork runs, cable trays, and smaller equipment such as condensers. Manufactured from recycled crumb rubber with a fully adjustable aluminum mounting track. Not recommended for large equipment.



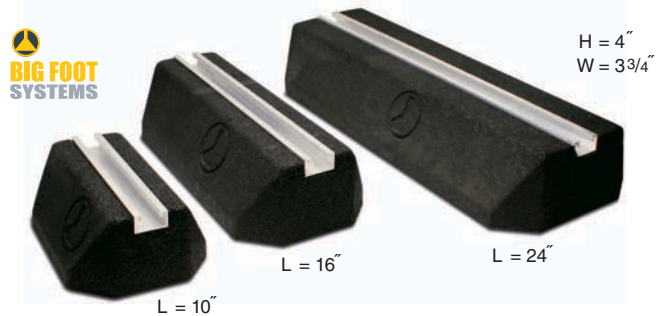
RS # (ref. #)	DESCRIPTION	WT LBS.
87772 (RMB10L)	FIX-IT-FOOT LOW 10"	2.3
87774 (RMB16L)	FIX-IT-FOOT LOW 16"	3.7

Low Profile Rubber Risers offer significant vibration isolation, and are ideal for rooftop support of equipment and systems. Aluminum linear track permits the use of standard strut hardware (not included). Underside has recessed area to permit easy leveling.

Materials: Recycled Crumb Rubber/Aluminum

Max weight capacity:

RMB10L - 110 lbs RMB16L - 220 lbs



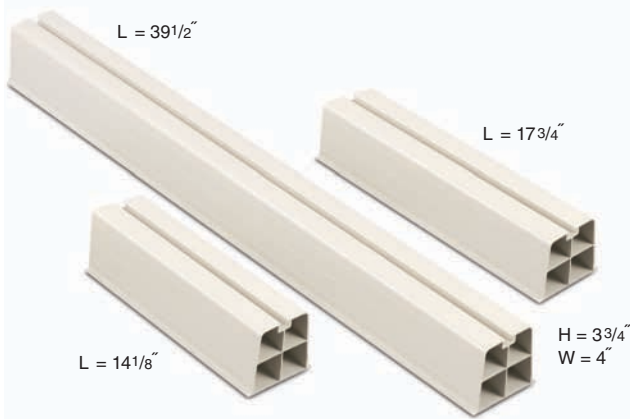
RS # (ref. #)	DESCRIPTION	WT LBS.
87771 (RMB10)	FIX-IT-FOOT 10"	4.2
87773 (RMB16)	FIX-IT-FOOT 16"	7.5
87775 (RMB24)	FIX-IT-FOOT 24"	16

Similar to the low profile model, these risers have additional vibration isolation due to their increased height. Their extra weight will increase stability. Aluminum channel accepts standard Unistrut hardware.

Max weight capacity:

RMB10 - 220 lbs RMB16 - 440 lbs RMB24 - 660 lbs

Light Duty Risers



RS # (ref. #)	DESCRIPTION	WT LBS.
87761 (PR-351N-I)	POLYMER RISER 14" (20)	29
87762 (PR-351N-M)	POLYMER RISER 18" (20)	41
87763 (PR-351N-L)	POLYMER RISER 39" (4)	16
87765 (PRC-351N)	END CAPS (1 pair)	1

Polymer Risers are light, durable and weather resistant. Linear track holds 3/8" hex head bolts - two 7/8" long bolts included. End caps available.

Material: Ivory PVC

Max weight capacity: PR-351N-I - 308 lbs

PR-351N-M - 397 lbs PR-351N-L - 880 lbs



Through the use of current technology and social media, RectorSeal provides up-to-date technical information and marketing materials.

Company Homepage:

An online hub of readily available resources for our full-line of specialty chemicals and tools including: product codes, MSDS and product data sheets. Promotional literature and artwork can be easily viewed. Trade show scheduling and booth information are also updated frequently.



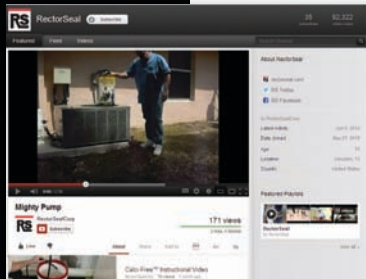
Social Media:

Up to the minute information from RectorSeal regarding new products, press releases, market trends and trade articles are sent directly to your wall, time-line and mobile devices.



Online Video:

Watch instructional videos on how to effectively and properly use RectorSeal products. Subscribe to our channel and receive new product videos instantly.



Online Training:

Earn certifications from RectorSeal for approved field use of our specialty products. Lessons and exams can be completed at your own pace and results accessed from your personal computer. 5 NATE CEU classes are also available.



To utilize these services, visit www.rectorseal.com

Contact: RectorSeal®

2601 Spenwick Drive, Houston, TX 77055

☎ 713-263-8001 | 800-231-3345

☎ 713-263-7577 | 800-441-0051

🌐 www.rectorseal.com

Distributed by: