

FIRST STAGE REGULATORS



FISHER R122H-AAJ

Small, non-adjustable first stage regulator that is factory set at 10 psig. Contains a relief valve and large vent. 10 in a case.

ITEM#	CAPACITY	INLET	OUTLET	OUT. PRES. (ADJ. RANGE)
R122H-AAJ	1,100,000	1/4"	1/2"	10# (non-adjustable)

*Capacities based on 30 psig inlet and 20% droop.)



FISHER R622H Series

Large capacity adjustable first stage regulators that are factory set at 5 or 10 psig. Equipped with high capacity internal relief valve with 3/4" FNPT vent and built-in 1/8" FNPT gauge taps on both inlet and outlet sides. 10 in a case.

ITEM#	CAPACITY	INLET	OUTLET	OUT. PRES. (ADJ. RANGE)
R622H-BGK	2,000,000	1/2"	1/2"	5# (4-6 psig)
R622H-BGJ	2,100,000	1/2"	1/2"	10# (8-12 psig)
R622H-HGJ	2,100,000	FPOL	1/2"	10# (8-12 psig)
R622H-JGK	2,250,000	FPOL	3/4"	5# (4-6 psig)
R622H-JGJ	2,250,000	FPOL	3/4"	10# (8-12 psig)
R622H-DGJ	2,400,000	3/4"	3/4"	10# (8-12 psig)

(Capacities based on 30 psig inlet and 20% droop.)



Sherwood Streamline 740HP

Compact technology regulator with 1/8" NPT gauge port. Mounting plate: 700-4 12 in a case.

ITEM#	CAPACITY	INLET	OUTLET	OUT. PRES. (ADJ. RANGE)
740HP	1,000,000	1/4"	1/2"	10 psig

(Capacities is determined at actual delivery pressure 20% less than set pressure with inlet pressure 20% higher than set pressure.)



Sherwood 800HPS Series

This regulator is colored red and has plenty of capacity for a 1000 gallon tank. A regulator with an internal relief valve protects against propane condensation in the first stage line and gives positive indication of regulator malfunction. This regulator has a factory pressure setting at 10 psig and a 1/8" FNPT pressure port for monitoring outlet pressure. - 6 in a case

ITEM#	CAPACITY	INLET	OUTLET	OUT. PRES. (ADJ. RANGE)
800HPS1	1,000,000	FPOL	1/2"	10# (5 - 15 psig)
800HPS2	1,000,000	1/2"	1/2"	10# (5 - 15 psig)
800HPS3	1,000,000	FPOL	3/4"	10# (5 - 15 psig)
800HPS4	1,000,000	1/2"	3/4"	10# (5 - 15 psig)

(Capacities based on 25 psig inlet at 9 psig delivery pressure.)

SECOND STAGE REGULATORS

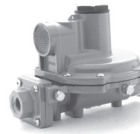


FISHER R222 Series

Designed for 2 stage LP gas systems. Reduces outlet pressure from the first-stage regulator (10psig) to an outlet pressure of 11" water column. The unit is for small domestic loads and has an ideal size for tight fit applications. 10 in a case.

ITEM#	CAPACITY	INLET	OUTLET	OUT. PRES. (ADJ. RANGE)
R222-BAF	659,000	1/2"	1/2" NPT	11" (9 1/2 -13")
R222-BAFXA ²	659,000	1/2"	1/2" NPT	11" (9 1/2 -13")

(Capacities based on 10 psig inlet and 2 inches water column droop.) (Spring case vent over outlet)



FISHER R622 Series Straight Through Type

Large capacity adjustable second stage regulators with full capacity internal relief valve with 3/4" FNPT vent. Regulators are color coded palm green and factory set at 11" WC. with first stage inlet pressure of 10 psig. Have built-in 1/8" FNPT gauge taps on both inlet and outlet sides. 10 in a case.

ITEM#	CAPACITY	INLET	OUTLET	OUT. PRES. (ADJ. RANGE)
R622-BCF	875,000	1/2"	1/2"	11" (9-13")
R622-CFF	1,400,000	1/2"	3/4"	11" (9-13")
R622-DFE	1,400,000	3/4"	3/4"	11" (9-13")
R622-CFGXA	1,125,000	1/2"	3/4"	18" (13-20")

(Capacities based on 10 psig inlet and 2" WC droop.)



FISHER R652 SERIES Back Mount Type

Large capacity back-mount second stage regulator with same features and settings of the R622 Series regulators. Outlet at right angle to inlet. 10 in a case.

ITEM#	CAPACITY	INLET	OUTLET	OUT. PRES. (ADJ. RANGE)
R652-CFF	1,000,000	1/2"	3/4"	11" (9-13")
R652-DFE	1,000,000	3/4"	3/4"	11" (9-13")

(Capacities based on 10 psig inlet and 20% droop.)



FISHER HSRL Series

For domestic and light commercial applications. High strength cast iron body in angle and straight configurations. - Sold individually

ITEM#	CAPACITY	INLET	OUTLET	BODY	OUT. PRES. (ADJ. RANGE)
HSRL-BFC	2,300,000	3/4"	3/4"	STRAIGHT	11" (9 -13")
HSRL-CFC	2,600,000	1"	1"	STRAIGHT	11" (9 -13")

(Capacities based on 10 psig inlet and 20% droop.)



FISHER R642 Series

Designed for 2 stage LP gas systems. The unit is designed to reduce the outlet from a first stage regulator (10psig) to an outlet pressure of 11" water column. It's 90 degree body design makes the R642 ideal for metered installations. 10 in a case.

ITEM#	CAPACITY	INLET	OUTLET	OUT. PRES. (ADJ. RANGE)
R642-DFE	900,000	3/4"	3/4" NPT	11" (9 -13")
R642-DFFXA ²	900,000	3/4"	3/4" NPT	11" (9 -13")

(Capacities based on 10 psig inlet and 2 inches water column droop.) (Spring case vent over outlet)

SECOND-STAGE (CONTINUED)

A

 **Streamline 760LP**




Compact technology regulator with 1/8" NPT gauge port. Has flow control technology which prevents downstream pressure from exceeding 2 psig without high capacity venting to the atmosphere. 12 in a case

Mounting plate: 700-4

ITEM#	CAPACITY	INLET	OUTLET	OUT. PRES. (ADJ. RANGE)
760LP	500,000	1/2"	1/2"	11"

(Capacities based on inlet pressure as low as 25 psig at 9" WC outlet pressures.)

 **800 SERIES**

Straight Through Type



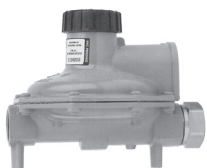
Sherwood's second stage regulators are colored green. They have the capacity to handle large loads and all are equipped with full capacity internal relief valves. The full capacity internal relief valve limits outlet pressure to a maximum of 2 psig, even with total regulator seat failure. They have 1/8" FNPT pressure port for monitoring outlet pressure. 6 in a case.

ITEM#	CAPACITY	INLET	OUTLET	OUT. PRES. (ADJ. RANGE)
800HC	800,000	1/2"	1/2"	11" (9-13")
800JC	800,000	1/2"	3/4"	11" (9-13")
800NC	800,000	3/4"	3/4"	11" (9-13")

(Capacities based on 7.5 psig inlet at 9" WC delivered pressures.)

 **800 CS/BCR SERIES**

Straight Through Swivel Type



Same quality product as the standard 800 Series regulator, but with the special feature of swivel FNPT at the inlet and/or outlet. Both inlet and outlet connections rotate independently. Swivel connections cannot

be over tightened or loosened from the regulator body during installation or replacement. Provides fast and easy installation without additional cost of previously required hardware. Factory set at 11" w.c. 6 per case.

ITEM#	CAPACITY	SWIVEL INLET	FIXED OUTLET	OUT. PRES. (ADJ. RANGE)
800HCS	800,000	1/2"	1/2"	11" (9-13")
800JCS	800,000	1/2"	3/4"	11" (9-13")
800NCS	800,000	3/4"	3/4"	11" (9-13")

ITEM#	CAPACITY	SWIVEL INLET	FIXED OUTLET	OUT. PRES. (ADJ. RANGE)
800HBCR	800,000	1/2"	1/2"	11" (9-13")
800JBCR	800,000	1/2"	3/4"	11" (9-13")
800NBCR	800,000	3/4"	3/4"	11" (9-13")

SECOND-STAGE (CONTINUED)

 **800 BCS/BCSR SERIES**

Back Mount Swivel Type




The back-mount or "Right Angle" regulator adds yet another dimension to versatility. This configuration allows the regulator to be installed without a mounting bracket and also incorporates Sherwoods swivel feature to increase ease of installation. Factory set at 11" w.c. 6 per case

ITEM#	CAPACITY	SWIVEL INLET	FIXED OUTLET	OUT. PRES. (ADJ. RANGE)
800HBCS	800,000	1/2"	1/2"	11" (9-13")
800JBCS	800,000	1/2"	3/4"	11" (9-13")
800NBCS	800,000	3/4"	3/4"	11" (9-13")

ITEM#	CAPACITY	SWIVEL INLET	FIXED OUTLET	OUT. PRES. (ADJ. RANGE)
800HBCSR	800,000	1/2"	1/2"	11" (9-13")
800JBCSR	800,000	1/2"	3/4"	11" (9-13")
800NBCSR	800,000	3/4"	3/4"	11" (9-13")

INTEGRAL TWO-STAGE REGULATORS

 **R232 SERIES**

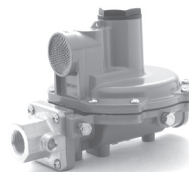


Designed for installations with small capacity loads. The compact size makes it ideal for ASME tanks used on recreational vehicles and small residential loads. 10 in a case.

ITEM#	CAPACITY	INLET	OUTLET	OUT. PRES. (ADJ. RANGE)
R232-BBF	455,000	1/4"	1/2"	11" (9 1/2"-13")
R232-BBFXA*	455,000	1/4"	1/2"	11" (9 1/2"-13")
R232-HBF	455,000	FPOL	1/2"	11" (9 1/2"-13")
R232-HBFXA*	455,000	FPOL	1/2"	11" (9 1/2"-13")

* Has vent positioned at 90° from outlet

 **R632 Series**



These units are used for on-site cylinder installations, mobile homes, and average residential service where separation of the first and second-stage regulators is not cost effective. 10 in a case.

ITEM#	CAPACITY	INLET	OUTLET	OUT. PRES. (ADJ. RANGE)
R632-BCF	700,000	1/4"	1/2"	11" (9 1/2"-13")
R632-HCF	700,000	FPOL	1/2"	11" (9 1/2"-13")
R632-CFF	750,000	1/4"	3/4"	11" (9 1/2"-13")
R632-JFF	750,000	FPOL	3/4"	11" (9 1/2"-13")

(*Capacities based on 30 psig inlet pressure and 20% droop)

INTEGRAL TWO STAGE REGULATORS (CONTINUED)



Streamline 720 Series

These regulators have compact technology and two 1/8" NPT gauge ports. These regulators also have flow control technology, which prevents downstream pressure from exceeding 2 psi without high capacity venting to the atmosphere. 12 in a case.

Mounting plate: 700-1

ITEM #	CAPACITY	INLET	OUTLET	OUT PRES.
720C	160,000	1/4"	3/8"	(NON ADJ.)
720A	250,000	1/4"	3/8"	11"
720B	500,000	1/4"	1/2"	11"

(*Capacities is based on inlet pressure as low as 25 psig at 9" WC outlet pressure.)



920/921 Series

Combines first stage and second stage regulation into one unit. Ideal for use with installations of large cylinders (200, 300, 420 pounds) or stationary 500 and 1,000 gallon tanks. The 920/921 Series regulator has a full-capacity relief valve that limits outlet pressure to a maximum of 2 psig, even with total seat failure. It has a 1/8" FNPT port for monitoring outlet pressure. 6 in a case.

ITEM#	CAPACITY	INLET	OUTLET	OUT. PRES. (ADJ. RANGE)
920	550,000	1/4"	1/2"	10" (9-13")
920A	550,000	1/4"	3/4"	10" (9-13")
921	550,000	FPOL	3/4"	10" (9-13")
921A	550,000	FPOL	1/2"	10" (9-13")

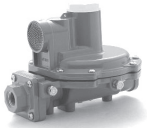


MG290-00

Economical regulator for small loads. 11" outlet pressure.

ITEM#	CAPACITY	INLET	OUTLET
MG290-00	90,000 BTU	1/4"	3/8"

2 PSI REGULATORS



FISHER R622E Series

For 2 psi Regulator Systems

2 psi service regulators with internal relief valves. Designed to serve as an intermediate regulator installed on the exterior of the building structure for 2 psi regulator systems. White spring cover. 10 in a case.

ITEM#	CAPACITY	INLET	OUTLET	OUT. PRES. (ADJ. RANGE)
R622E-BCH	1,250,000	1/2"	1/2"	2 psig (1-2.2)
R622E-DCH	1,500,000	3/4"	3/4"	2 psig (1-2.2)
R652E-DFH*	1,400,000	3/4"	3/4"	2 psig (1-2.2)
S302H-FHK	4,090,000	1 1/4"	1 1/4"	2 psig (1.5-3)

* Backmount Regulator (capacities based on 10 psig inlet and 20% droop)

2 PSI REGULATORS (CONTINUED)



900 Series

Integral 2-stage 2 PSI Regulator. Mount at the tank and pipe directly to the Maxitrol regulator.

ITEM#	CAPACITY	INLET	OUTLET	OUT. PRES.
920MP	750,000	1/4"	1/2"	2 psi
920AMP	750,000	1/4"	3/4"	2 psi
921MP	750,000	POL	1/2"	2 psi
921AMP	750,000	POL	3/4"	2 psi



StreamLine 750MP

This regulator has compact technology and two 1/8" NPT gauge ports. This regulator also has flow control technology, which prevents downstream pressure from exceeding 2 psi without high capacity venting to the atmosphere. 12 in a case

Mounting plate: 700-4

ITEM#	CAPACITY	INLET	OUTLET	OUT. PRES.
750MP	400,000	1/2"	1/2"	2 psi



800 Series

Full size 2 psi regulator with internal relief valve. 6 in a case.

ITEM#	CAPACITY	INLET	OUTLET	OUT. PRES.
800MP	1,050,000	1/2"	1/2"	2psi
800JP	1,150,000	1/2"	3/4"	2psi
800MPS	1,175,000	1/2" swivel	1/2"	2psi
800JPS	1,050,000	1/2" swivel	3/4"	2psi

APPLIANCE REGULATORS FOR 2 PSI SYSTEMS



Maxitrol Regulators

The 1/2" and 3/4" regulators include an approved vent limiter for indoor installations. The 1 1/4" must be vented to the outside.

ITEM #	CAPACITY	INLET	OUTLET	OUT PRES
REG-3P	250,000	1/2"	1/2"	11"
REG-5A	550,000	3/4"	3/4"	11"
M325-7-11/4	1,000,000	1 1/4"	1 1/4"	11"

Accessories: Maxicap-3 Cover for Reg-3P
Maxicap-5 Cover for Reg-5A

AUTOMATIC CHANGEOVER REGULATORS



R962-31

ITEM#	CAPACITY	INLET	OUTLET
R962-31	400,000	1/4" INV. FL	1/2"

AUTOMATIC CHANGEOVER REGULATORS (CONTINUED)

FISHER R110/21



Changeover manifold assembly. This manifold connects to the inlet of a second stage regulator, providing a complete automatic changeover assembly. With no relief valve, it cannot be used for domestic service. If the manifolds are used as a final-stage (pounds to pounds), a relief valve is required in the down stream system.

ITEM#	CAPACITY	INLET	OUTLET	Outlet Pressure Setting	
				Supply	Reserve
R110-21	500,000	1/4" INV. FL.	1/4" FNPT	15 psig (1.03 bar)	7 psig (0.48 bar)



Sherwood Streamline 730 Series

Compact technology with Flow Control. Mounting plate: 700-1 Protective Cover for 730C: 700-3 730C+A: 12 in a case. 730B: 9 in a case.

ITEM #	CAPACITY	INLET	OUTLET	OUT PRES.
730C	160,000	1/4" INV. FL.	3/8" FNPT	(NON-ADJ.)
730A	250,000	1/4" INV. FL.	3/8" FNPT	11"
730B	400,000	1/4" INV. FL.	1/2" FNPT	11"



Sherwood 1776 AFDI

ITEM#	CAPACITY	INLET	OUTLET
1776AFDI	550,000	1/4" INV. FL.	1/2"



Marshall Gas Controls MG254-00

ITEM#	CAPACITY	INLET	OUTLET
MG254-00	130,000	1/4" INV. FL.	3/8"
RCI-24	Remote Changeover Indicator		

OUTDOOR GRILL/APPLIANCE REGULATORS



FISHER 912 SERIES

Drip lip vent for vertical installations.

ITEM#	CAPACITY	INLET	OUTLET	OUT PRES.
912/101	320,000	1/4"	3/8"	11"
912/104	320,000	1/4"	1/4"	11"



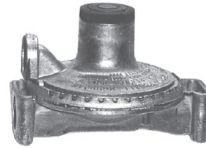
Marshall Gas Controls 150 Series

Small, inexpensive, right angle inlet, low pressure regulator for use on grills. Because this regulator does not have a drip-lip vent, it must be installed under a protective cover when used outdoors.

Includes QCC inlet fitting and 24" hose assembly.

ITEM#	CAPACITY	INLET	OUTLET	OUT PRES.
MG150-#20674	100,000	QCC	24" HOSE w/ 3/8" FL END	11"

OUTDOOR GRILL/APPLIANCE REGULATORS (CONTINUED)



Marshall Gas Controls 230 SERIES

Drip lip vent for vertical installations.

ITEM#	CAPACITY	INLET	OUTLET	OUT. PRES.	
				Supply	Reserve
MG230-00	140,000	1/4"	3/8"	11"	
MG224-00	140,000	MPOL	3/8"	11"	



TVL202

This UL Listed regulator by Rotarex offers greater flexibility with your outdoor installations. The TVL202 has a BTU capacity of 140,000 BTU's. The TVL202 comes with the QCC adaptor installed as shown.

Hose assemblies sold separately.

COMMERCIAL AUTO CHANGEOVER REGULATORS



FISHER 749B/21

Changeover manifold assembly used in conjunction with an HSRL or 64SR series regulator.

ITEM#	CAPACITY	INLET	OUTLET	Outlet Pressure Setting	
				Supply	Reserve
749B-21	1,500,000	1/2" FNPT	1/2" FNPT	15 psig (1.03 bar)	5 psig (0.35 bar)

1. Based on 100 psig (6.90 bar) inlet, reserve setting.



FISHER 64SR/122

High Pressure (pounds to pounds) Service

ITEM#	CAPACITY	INLET	OUTLET	OUT. PRES. (ADJ. RANGE)
64SR/122	1,210,000	1/2" FNPT	1/2" FNPT	10# (5 - 20 psig)

COMMERCIAL/INDUSTRIAL FIRST STAGE AND 2 PSI REGULATORS



FISHER 627/630 SERIES

Large capacity high pressure regulators for use in conjunction with Type S302G or S202G units. They can also be used on final-stage (pounds to pounds) service. Since these regulators do not have a built-in relief valve, a type 1805 external relief valve (page 13) should be installed downstream of the regulator to protect from excessive pressure build-up.

ITEM#	CAPACITY	INLET	OUTLET	OUT. PRES. (ADJ. RANGE)
627/419	27,161,000	3/4"	3/4"	60# (35 - 80 psig)
627/5810	6,080,000	3/4"	3/4"	10# (5-20 psig)
627/6210	10,755,000	3/4"	3/4"	10# (5-20 psig)
627/7710	10,773,000	1"	1"	10# (5-20 psig)
630-104/78	14,000,000	2"	2"	10# (8-20 psig)
S302H-FHK	4,090,000	1 1/4"	1 1/4"	2# (1.5-3 psig)

COMMERCIAL/INDUSTRIAL SECOND STAGE REGULATORS



FISHER 99 SERIES
Pilot operated unit keeps outlet pressure constant despite varying flow rates and inlet pressures. The 99 can be used for low or high pressure.

ITEM#	CAPACITY	INLET	OUTLET	OUT. PRES. (ADJ. RANGE)
99-513	36,225,000	2"	2"	10# (2-10 psig)
99-515	37,680,000	2"	2"	15# (10-20 psig)
99-901PH	116,180,000	2"	2"	40# (10-65 psig)



FISHER S302G SERIES*

ITEM#	CAPACITY	INLET	OUTLET	OUT. PRES. (ADJ. RANGE)
1813C-20-3*	2,500,000	1 1/4"	1 1/4"	11"
S302G-FMC	5,200,000	1 1/4"	1 1/4"	11" (6-14")
S302G-KMC	5,500,000	1 1/2"	1 1/2"	11" (6-14")
S302G-SMC	5,500,000	2"	2"	11" (6-14")
S302H-FHK	4,090,000	1 1/4"	1 1/4"	2# (1.5 - 3#)

* Reliance Brand



FISHER S202G SERIES*

ITEM#	CAPACITY	INLET	OUTLET	OUT. PRES. (ADJ. RANGE)
S202G-BNC	10,800,000	1 1/2"	1 1/2"	11" (9-18")
S202G-CNC	14,500,000	2"	2"	11" (9-18")

* For high capacity relief, install a 289H/2 or 289L/21 relief valve (page 13) downstream of regulator.

HIGH PRESSURE REGULATORS



FISHER TYPE 64 SERIES
High capacity for grain dryers and tobacco curing service. Has 1/4" FNPT plugged gauge port and 1/2" FNPT inlet and outlet. The SR Series can be used as a final stage regulator on high pressure systems.

ITEM#	CAPACITY	OUT. PRES. (ADJ. RANGE)	INT. RELIEF VALVE
64/33	2,625,000	10 psig (3-15)	NO
64/35	3,600,000	20 psig (5-35)	NO
64/36	4,150,000	40 psig (30-60)	NO
64/222	5,250,000	50 psig (35-100)	NO
64SR/21	2,625,000	10 psig (3-15)	YES
64SR/22	3,000,000	15 psig (5-20)	YES
64SR/23	3,600,000	20 psig (5-35)	YES

HIGH PRESSURE REGULATORS (CONTINUED)

FISHER TYPE 67C SERIES
Small high pressure torch or burner-type regulator for liquid (3-5 gpm) or vapor service. All have 1/4" FNPT plugged gauge port and 1/4" FNPT inlet and outlet.



HANDWHEEL ADJUSTMENT

ITEM#	CAPACITY	OUT. PRES. (ADJ. RANGE)
67CH-751	675,000	15 PSIG (3-20)
67CH-743	750,000	20 PSIG (3-35)
67CH-742	1,200,000	40 PSIG (30-60)
67CH-741	1,000,000	50 PSIG (50-135)



WRENCH ADJUSTMENT

ITEM#	CAPACITY	OUT. PRES. (ADJ. RANGE)
67CW-683	675,000	15 PSIG (3-20)
67CW-684	750,000	20 PSIG (3-35)
67CW-685	1,200,000	40 PSIG (30-60)
67CW-701	1,000,000	50 PSIG (50-135)



DIAL CAP ADJUSTMENT

ITEM#	CAPACITY	OUT. PRES. (ADJ. RANGE)
67CD-100	675,000	15 PSIG (5-20)
67CD-101	750,000	20 PSIG (3-35)
67CD-102	1,200,000	40 PSIG (30-60)
67CD-103	1,000,000	50 PSIG (40-100)



Sherwood
Harsco
710A
Handwheel Adjustment
1/8" FNPT Gauge Port

ITEM#	CAPACITY	INLET	OUTLET	OUT. PRES. (ADJ. RANGE)
710A	1,200,000	1/4" FNPT	1/4" FNPT	40# (30 - 60)
710B	1,200,000	1/4" FNPT	1/4" FNPT	20# (3 - 60)

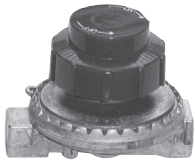


Marshall Gas Controls
Division of S.H. Leggett Co.
130 SERIES

ITEM#	INLET	OUTLET	OUTLET PRESSURE
MG130#139	1/4"	1/4"	10 psig
MG130#146	MPOL	1/4"	10 psig
MG130#20150	1/4"	1/4"	2 psig

HIGH PRESSURE REGULATORS (CONTINUED)

A



MARSHALL BRASS

MG350-00

Capacity: 280,000 BTU
Will function as a shut-off valve.

ITEM#	INLET	OUTLET	OUTLET PRESSURE
MG350-00	1/4"	1/4"	0-18 PSIG



HURRICANE

H1200

Economical, imported regulator T-handle

ITEM#	CAPACITY	INLET	OUTLET	OUTLET PRESSURE (SET PRESSURE)
H1200	750,000	1/4"	1/4"	0-30 (20) PSI
H1200-60	1,200,000	1/4"	1/4"	30-60 (40) PSI

PIGTAILS (1/4" OD TUBING) / HOGTAILS (3/8" OD)



CONNECTION	TYPE	NUT	NIPPLE
Economy	MPOL	7/8"	Short
Standard	MPOL	7/8"	Long
Heavy Duty	MPOL	1 1/8"	Long

POL X 1/4" INV. Flare

PART NUMBER	LGTH	TYPE OF MPOL CONNECT	TUBE SIZE
ME-K240	20"	Standard	1/4"
ME-K220	20"	Heavy Duty	1/4"
ME-K241	30"	Standard	1/4"
ME-K249	36"	Standard	1/4"



THT-12 RUBBER PIGTAIL

POL x POL, 12"

POL X POL

PART NUMBER	LGTH	TYPE OF MPOL CONNECT	TUBE SIZE
ME-K809	6"	Economy	1/4"
ME-K865*	6"	Economy	3/8"
ME-K845	12"	Economy	1/4"
ME-K245	12"	Standard	1/4"
ME-K862	12"	Economy	3/8"
ME-K840	20"	Economy	1/4"
ME-K160	20"	Standard	1/4"
ME-K860	20"	Economy	3/8"
ME-K200	20"	Standard	3/8"
ME-K161	30"	Standard	1/4"
ME-K846	36"	Economy	1/4"
ME-K162	36"	Standard	1/4"
ME-K166	48"	Standard	1/4"

*Add -90 to part # for 90° Bend

PIGTAILS AND HOGTAILS (CONTINUED)

POL X 1/4" MNPT

PART NUMBER	LGTH	TYPE OF MPOL CONNECT	TUBE SIZE
ME-K807	6"	Economy	1/4"
ME-K806	12"	Economy	1/4"
ME-K460	12"	Economy	3/8"
ME-K275	15"	Standard	1/4"
ME-K804	18"	Economy	1/4"
ME-K280	20"	Standard	1/4"
ME-K461	20"	Economy	3/8"

*Add -90 to part # for 90° Bend

POL X 1/2" MNPT

PART NUMBER	LGTH	TYPE OF MPOL CONNECT	TUBE SIZE
ME-K833	6"	Economy	3/8"
ME-K520	12"	Standard	3/8"

FLEXIBLE HOSE PIGTAILS



MG40409-20

POL x 1/4" MNPT

POL X 1/4" INV. FLARE

PIGTAIL W/O HANDWHEEL *

PART NUMBER	LENGTH
MG40403-15	15"
MG40403-20	20"
MG40403-24	24"
MG40403-30	30"
MG40403-36	36"
MG40403-60	60"

POL or QCC X 1/4" INV. FLARE

PIGTAIL W/ HANDWHEEL *

POL X 1/4" INV. FLARE (MG40402 Series)
QCC X 1/4" INV. FLARE (MG40408 Series)

PART NUMBER	LENGTH
MG40402-15	15"
MG40402-20	20"
MG40402-24	24"
MG40402-36	36"

* For pigtail with QCC coupling instead of POL, change part # to MG40408-XX. These are available in 15", 18", 24", 36", & 48" lengths

A

VENT ASSEMBLIES

Attached directly to the regulator vent connection to a regulator vent line, vent assemblies should be pointed downward on outdoor installations to avoid moisture build-up in the regulator spring case. Units with a stabilizer assembly are intended for regulators with stability problems. The stabilizer gives a restricted discharge when necessary.



UMBRELLA TYPE

PART #	SIZE	STABILIZER
Y602-1	1/4" MNPT	NO
Y602-2	1/4" MNPT	YES



ANGLE TYPE

PART #	SIZE	STABILIZER
Y602-13	1/4" FNPT	NO
Y602-14	1/4" FNPT	YES
Y602-5	3/8" FNPT	NO
Y602-6	3/8" FNPT	YES
Y602-7	1/2" FNPT	NO
Y602-8	1/2" FNPT	YES
Y602-9	3/4" FNPT	NO
Y602-23	3/4" MNPT	NO
Y602-25	1" FNPT	NO

MOUNTING BRACKETS



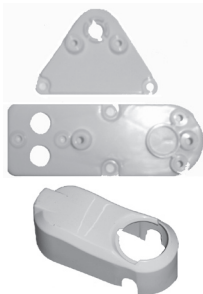
P100A

Fits Fisher 912, R500 & R600 Series & R966 and Sherwood 800 Series Regulators



P100C

Universal economical bracket for full size Fisher, Rego & Sherwood Regulators



SHERWOOD STREAMLINE BRACKETS

Part #	Application
700-4	740, 750 & 760 Series
700-1	720 & 730 Series
700-3	730 Series Cover



MG240-32

Bracket for Marshall Brass Regulators.

REGULATOR MANIFOLDS



ME-P400 TEE BLOCK

Male POL Inlet x Female POL Outlets



ME-P410

Same as P400 but has a check valve

1700 TEE CHECK

1/4" MPT Inlet x 1/4" Inverted Flare Outlets

REGULATOR ADAPTERS



INVERTED FLARE PLUG

ME-P500

Keeps dirt and foreign material from entering changeover assemblies like R966 and R110.



MC48W

Adapter with screen 1/4" INV flare x 1/4" MNPT converts NPT inlet to inverted flare inlet.



ME-1002K

1/4" inverted flare nut for venting regulators in underground installations.

REGULATOR COVER



R100

Second Stage Regulator Cover. Inexpensive heavy-duty plastic. Top hinge tucks under. Light gray color.