

# LYNN MANUFACTURING, INC

15 Marion St., Lynn, MA 01905  
TEL: 781-593-2500 FAX: 781-596-0430  
www.lynnmfg.com

## INSTALLATION INSTRUCTIONS

# 1067

Replacement Combustion  
Chamber Kit For  
Peerless JO / JOT  
Oil Fired Boilers

Also Fits:  
Electric Furnace Man OBT-5



This product contains fiberglass wool and ceramic fiber materials. Airborne fibers from these materials have been listed by the state of California as a possible cause of cancer through inhalation. Apply special care when handling these materials. (Burner door refractory, rear refractory, blankets, rope seal, jacket insulation, etc.)

**Please see SDS for more health and safety information.**

### *BEFORE STARTING:*

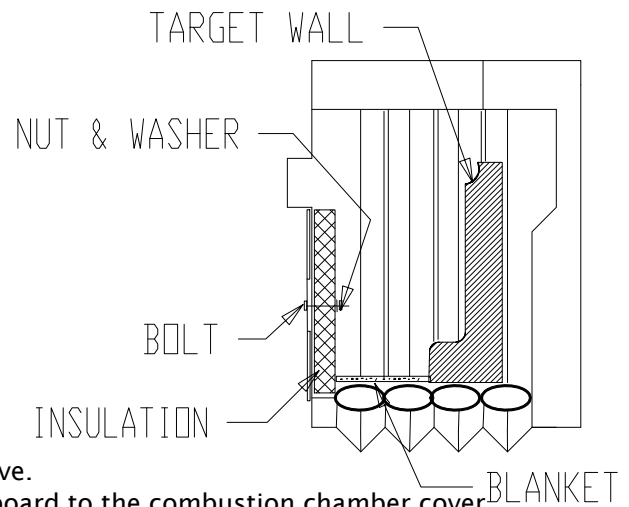
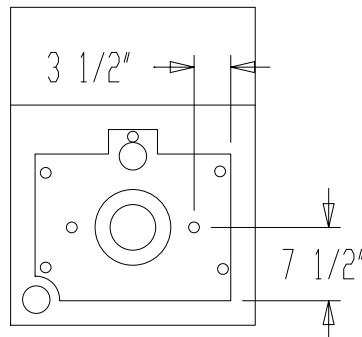


Failure to perform the following can cause severe personal injury, death or substantial property damage!

- \* Read all instructions before starting.
- \* Follow all instructions in proper order.
- \* Turn off service switch on boiler and all other electrical disconnect switches.
- \* Close fuel supply valve(s) and disconnect fuel line from burner.

**NOTE: A HIGH SPEED FLAME RETENTION OIL BURNER MUST BE USED WITH THIS KIT. (EXAMPLE: BECKETT AF/AFG)**

1. Remove oil burner from combustion chamber cover plate.
2. Remove combustion chamber cover plate.
3. Remove old combustion chamber and clean out combustion area.
4. Install target wall firmly against face of rear section of boiler.  
If necessary, use shims provided to insure a press fit.
5. Measure the distance from the front of the target wall to the front of the boiler and cut the 14" wide Kaowool blanket provided to this length. Open plastic bottle and spread contents (waterglass) on the floor of the boiler. Lay the blanket on the floor and center as shown.
6. Remove old insulation from inside surface of cover plate.
7. If combustion chamber cover plate does not have 2 holes for attaching the new thicker insulation board, drill them as shown above.
8. Use the stainless steel hardware provided to attach the insulation board to the combustion chamber cover plate as shown above.
9. Inspect the rope seal around the cover plate. If it is worn or damaged, replace it with the rope provided. Scrape off all of the old rope and clean the surface. Peel the paper from the adhesive strip on the new rope and press the rope into place.
10. The oil burner gasket should also be inspected and replaced if worn or damaged.
11. Reinstall the combustion chamber cover plate and oil burner.
12. Fire burner for 15 min. to allow chamber to "cure".



**NOTE:** When first fired, some smoke and a slight odor may occur.  
This is part of the curing process.

13. Combustion tests **MUST** be performed after the curing process is complete to insure proper performance.