

Streamline[®]

Tube • Fittings • Valves

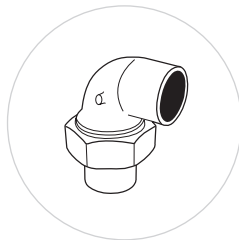
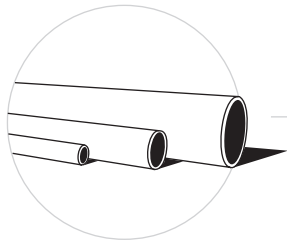
THE INDUSTRY'S FINEST PRODUCTS.
80 YEARS & COUNTING.



PLUMBING WHOLESALE CATALOG

A BRAND OF MUELLER INDUSTRIES





CONTENTS

Tube & Pipe

Copper Tube	8-9
Plastic-Coated Copper Tube	10
Level Wound Copper Tube	11
Line Sets	12-14
ABS DWV Pipe	15

Copper Fittings

Solder-Joint Copper Pressure Fittings	18-30
Solder-Joint Copper DWV Fittings	31-37
Copper Flare Fittings	38-39

Plastic Fittings

PVC Schedule 40 Pressure Fittings	42-47
Insert Fittings	48-51
ABS DWV Fittings	52-65
PVC DWV Fittings	66-78
PVC Sewer Fittings	79-82
Styrene Sewer & Drain Fittings	83-86

Index	87
-------	----

▶ **80 YEARS**

OF THE INDUSTRY'S
FINEST PRODUCTS.

AND COUNTING.



- ▶ **Mueller Industries' Streamline® brand of tube, fittings, valves and related products have set the Plumbing, HVAC and Refrigeration Industry's standard of excellence for over 80 years. Known for quality, precision fit and reliable performance, we're proud to be the preferred and specified brand of professionals all around the world.**





Streamline® Past and Future.

When Mueller Industries introduced the world's first solder-type copper fittings under the Streamline brand in 1930, the plumbing industry changed forever.

Those then-revolutionary Streamline copper solder-joined fittings were strong, precise and reliable, which helped establish all-copper plumbing systems as the industry standard.

Today, Streamline stands for 80 years of excellence in Plumbing, HVAC and Refrigeration flow-control products. Manufactured in the U.S.A. in our many modern, state-of-the-art facilities, Streamline copper tube, fittings and line sets; plastic pipe and fittings; brass flare fittings; refrigeration valves and protection devices are known and respected all over the world for consistency, precision fit and unflinching performance.

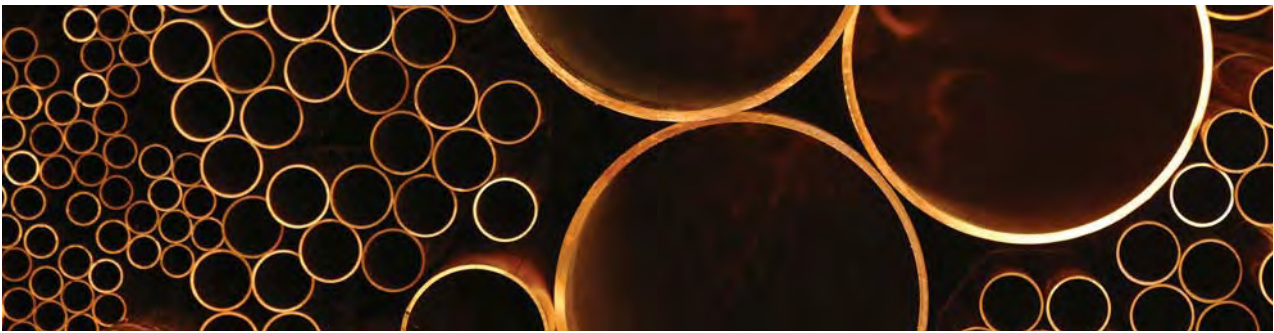


Streamline[®]

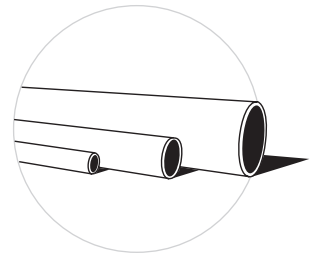
PREMIUM QUALITY TUBE & PIPE MANUFACTURED TO
THE ABSOLUTE HIGHEST STANDARDS.



TUBE & PIPE



▶ A global leader in premium-quality tube and pipe products since the early 1900's, Streamline® copper tube, line sets and ABS DWV pipe are manufactured in the USA to the absolute highest quality standards. From our pioneering of nitrogen charged ACR copper tube to the precision manufacturing of our ABS DWV pipe, our products reflect many industry first innovations and leading technologies. Each tube and pipe product line offers a full selection of choices to meet the needs of our customers' plumbing, air-conditioning, refrigeration, medical gas and other specialty applications.



- Copper Tube
- Plastic Coated Copper Tube
- Level Wound Copper Tube
- Line Sets
- ABS DWV Pipe

Streamline®

COPPER TUBE • PLUMBING



Streamline® Copper Tube sets the standard for quality, consistency and service in the plumbing industries. With a full line of copper tube products to support most all plumbing supply and DWV applications, Streamline® Copper Tube is available in all common types including Type K, Type L, Type M and DWV. Each piece of tube is incised marked and color coded for easy, long lasting identity. Manufactured in accordance with applicable standards, our ongoing commitment to quality continues to make Streamline® Copper Tube the preferred and specified brand of industry professionals.



- Made to applicable ASTM standards B88, B306, B819
- Meets NSF 61G
- Made in the USA

Copper Tube • Plumbing

Nom. Dia.	O.D. Dia.	TYPE K		TYPE L			TYPE M	DWV	MEDICAL GAS		
		Hard Lengths	Soft Coils	Soft Lengths	Hard Lengths	Soft Coils	Soft Lengths	Hard Lengths	Hard Lengths	Nitrogenized® thru 3-1/8" only	
										Type K Hard Lengths	Type L Hard Lengths
1/4"	3/8"	10 ft., 20 ft.	60 ft., 100 ft.	10 ft., 20 ft.	10 ft., 20 ft.	60 ft., 100 ft.	10ft, 20ft	-	-	10 ft., 20 ft.	10 ft., 20 ft.
3/8"	1/2"	10 ft., 20 ft.	60 ft., 100 ft.	10 ft., 20 ft.	10 ft., 20 ft.	60 ft., 100 ft.	10ft, 20ft	10 ft., 20 ft.	-	10 ft., 20 ft.	10 ft., 20 ft.
1/2"	5/8"	10 ft., 20 ft.	60 ft., 100 ft.	10 ft., 20 ft.	10 ft., 20 ft.	60 ft., 100 ft.	10ft, 20ft	10 ft., 20 ft.	-	10 ft., 20 ft.	10 ft., 20 ft.
5/8"	3/4"	10 ft., 20 ft.	60 ft., 100 ft.	10 ft., 20 ft.	10 ft., 20 ft.	60 ft., 100 ft.	10ft, 20ft	10 ft., 20 ft.	-	10 ft., 20 ft.	10 ft., 20 ft.
3/4"	7/8"	10 ft., 20 ft.	60 ft., 100 ft.	10 ft., 20 ft.	10 ft., 20 ft.	60 ft., 100 ft.	10ft, 20ft	10 ft., 20 ft.	-	10 ft., 20 ft.	10 ft., 20 ft.
1"	1-1/8"	10 ft., 20 ft.	60 ft., 100 ft.	10 ft., 20 ft.	10 ft., 20 ft.	60 ft., 100 ft.	10ft, 20ft	10 ft., 20 ft.	-	10 ft., 20 ft.	10 ft., 20 ft.
1-1/4"	1-3/8"	10 ft., 20 ft.	60 ft., 100 ft.	10 ft., 20 ft.	10 ft., 20 ft.	60 ft., 100 ft.	10ft, 20ft	10 ft., 20 ft.	10 ft., 20 ft.	10 ft., 20 ft.	10 ft., 20 ft.
1-1/2"	1-5/8"	10 ft., 20 ft.	60 ft., 100 ft.	10 ft., 20 ft.	10 ft., 20 ft.	60 ft., 100 ft.	10ft, 20ft	10 ft., 20 ft.	10 ft., 20 ft.	10 ft., 20 ft.	10 ft., 20 ft.
2"	2-1/8"	10 ft., 20 ft.	40 ft., 60 ft.	10 ft., 20 ft.	10 ft., 20 ft.	40 ft., 60 ft.	10ft, 20ft	10 ft., 20 ft.	10 ft., 20 ft.	10 ft., 20 ft.	10 ft., 20 ft.
2-1/2"	2-5/8"	10 ft., 20 ft.	-	10 ft., 20 ft.	10 ft., 20 ft.	-	10ft, 20ft	10 ft., 20 ft.	-	10 ft., 20 ft.	10 ft., 20 ft.
3"	3-1/8"	10 ft., 20 ft.	-	10 ft., 20 ft.	10 ft., 20 ft.	-	10ft, 20ft	10 ft., 20 ft.	10 ft., 20 ft.	10 ft., 20 ft.	10 ft., 20 ft.
3-1/2"	3-5/8"	10 ft., 20 ft.	-	-	10 ft., 20 ft.	-	-	10 ft., 20 ft.	-	10 ft., 20 ft.	10 ft., 20 ft.
4"	4-1/8"	10 ft., 20 ft.	-	-	10 ft., 20 ft.	-	-	10 ft., 20 ft.	10 ft., 20 ft.	10 ft., 20 ft.	10 ft., 20 ft.
5"	5-1/8"	10 ft., 20 ft.	-	-	10 ft., 20 ft.	-	-	10 ft., 20 ft.	10 ft., 20 ft.	10 ft., 20 ft.	10 ft., 20 ft.
6"	6-1/8"	10 ft., 20 ft.	-	-	10 ft., 20 ft.	-	-	10 ft., 20 ft.	-	10 ft., 20 ft.	10 ft., 20 ft.
8"	8-1/8"	10 ft., 20 ft.	-	-	10 ft., 20 ft.	-	-	10 ft., 20 ft.	-	10 ft., 20 ft.	10 ft., 20 ft.

COPPER TUBE • HVACR



Streamline® Copper Tube provides the strength, precision and cleanliness needed for the demanding conditions of HVAC and refrigeration applications. Preferred throughout the industry, our products have set the benchmark for HVACR copper tube. Streamline® Nitrogenized® ACR Copper Tube is pressurized with nitrogen to provide maximum protection against the formation of harmful oxides normally formed during brazing operations. Reduction of these oxides greatly reduces system contamination. Streamline® Refrigeration Service Tube is of a consistent dead soft temper, bright, thoroughly dried/dehydrated and packed in shrink wrapping plus individual cartons for the highest level of protection.



- Made to applicable ASTM standard B280
- Made in the USA

Copper Tube • Refrigeration

ACR TUBE Nitrogenized® thru 3-1/8" only	
O.D. Dia.	Hard Lengths
3/8"	10 ft., 20 ft.
1/2"	10 ft., 20 ft.
5/8"	10 ft., 20 ft.
3/4"	10 ft., 20 ft.
7/8"	10 ft., 20 ft.
1-1/8"	10 ft., 20 ft.
1-3/8"	10 ft., 20 ft.
1-5/8"	10 ft., 20 ft.
2-1/8"	10 ft., 20 ft.
2-5/8"	10 ft., 20 ft.
3-1/8"	10 ft., 20 ft.
3-5/8"	10 ft., 20 ft.
4-1/8"	10 ft., 20 ft.
5-1/8"	10 ft., 20 ft.
6-1/8"	10 ft., 20 ft.
8-1/8"	10 ft., 20 ft.

REFRIGERATION SERVICE TUBE	
O.D. Dia.	Soft Coils
1/8"	50 ft., 100 ft.
3/16"	50 ft., 100 ft.
1/4"	50 ft., 100 ft.
5/16"	50 ft., 100 ft.
3/8"	50 ft., 100 ft.
1/2"	50 ft., 100 ft.
5/8"	50 ft., 100 ft.
3/4"	50 ft., 100 ft.
7/8"	50 ft., 100 ft.
1-1/8"	50 ft., 100 ft.
1-3/8"	50 ft., 100 ft.
1-5/8"	50 ft., 100 ft.

O.D. Dia.	Wall Thickness .025"		Wall Thickness .032"	
	Hard Lengths	Soft Lengths	Hard Lengths	Soft Lengths
	1/4"	10 ft., 20 ft.	10 ft., 20 ft.	10 ft., 20 ft.

Temperature Control Tube is not recommended for forming or bending purposes.

Temperature Control Tube order quantities are in 2000 ft. per box increments.

Standard ACR Copper Tube is produced from Type L Copper Tube. Heavy Wall ACR Copper Tube produced from Type K Copper Tube is available upon request.

COPPER TUBE • PLASTIC COATED



Streamline® Plastic-Coated Copper Tube is manufactured in a variety of options for use when copper tube is to be buried or used in a potentially aggressive environment. Some building and insulation materials may contain chemicals that are potentially corrosive to plain copper tube, requiring it to be protected to ensure its longevity in service. Our plastic-coated copper tube eliminates the need for on-site tape wrapping or sleeving, creating a savings on labor and ensuring a professional-looking installation. It can be used in a wide variety of situations including reclaimed water applications and the movement of natural gas.



* Type K & L water tube only.

- For use in above-ground potable water supply systems
- Constructed of high-grade copper
- Made to applicable ASTM standards B88, B280
- Meets NSF 61G

Polyethylene-Coated Copper Tube: PlumbShield®, GasShield®, OilShield®, Coated ACR

Nom. Dia.	O.D. Dia.	TYPE K		TYPE L		COATED ACR		REFRIGERATION
		Lengths	Soft Coils	Lengths	Soft Coils	Type K	Type L	Soft Coils
1/4"	3/8"	-	60 ft., 100 ft.	-	60 ft., 100 ft.	-	-	50 ft., 100 ft., 250 ft.
3/8"	1/2"	-	60 ft., 100 ft.	-	60 ft., 100 ft.	-	-	50 ft., 100 ft., 250 ft.
1/2"	5/8"	20 ft.	60 ft., 100 ft.	20 ft.	60 ft., 100 ft.	20 ft.	20 ft.	50 ft., 100 ft., 250 ft.
5/8"	3/4"	20 ft.	60 ft., 100 ft.	20 ft.	60 ft., 100 ft.	20 ft.	20 ft.	50 ft., 100 ft.
3/4"	7/8"	20 ft.	60 ft., 100 ft.	20 ft.	60 ft., 100 ft.	20 ft.	20 ft.	50 ft., 100 ft.
1"	1-1/8"	20 ft.	60 ft., 100 ft.	20 ft.	60 ft., 100 ft.	20 ft.	20 ft.	50 ft., 100 ft.
1-1/4"	1-3/8"	20 ft.	60 ft., 100 ft.	20 ft.	60 ft., 100 ft.	20 ft.	20 ft.	-
1-1/2"	1-5/8"	20 ft.	-	20 ft.	-	20 ft.	20 ft.	-
2"	2-1/8"	20 ft.	-	20 ft.	-	20 ft.	20 ft.	-

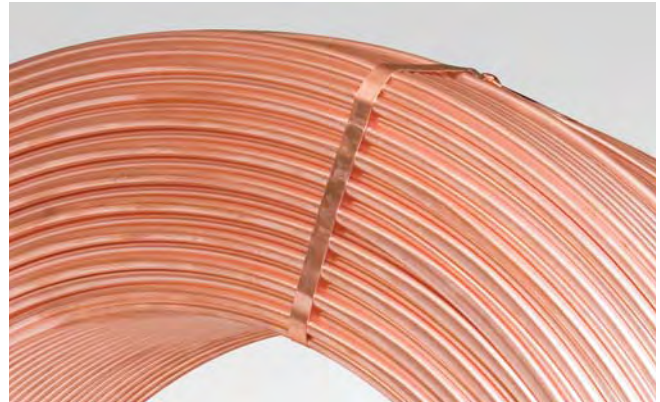
PlumbShield® is available in blue and red for water applications and purple for reclaimed water. Certified to NSF 61.

GasShield® is available in yellow for natural and LP Gas applications. *O.D. sizes only. Manufactured to meet the requirements of NFPA 54.

OilShield® is available in orange for fuel and oil applications. *O.D. sizes only. Manufactured to meet the requirements of NFPA 31.

Coated ACR is available in white for HVAC & Refrigeration applications. Hard drawn tube lengths are nitrogen charged and plugged.

COPPER TUBE • LEVEL WOUND



Streamline® Level Wound Copper Tube is a great solution for when large quantity coiled tubing is a benefit. Available in light annealed, soft annealed and hard temper, this tube comes in either bulk coil or spool rolled coil packaging. Bulk coils come independently stacked with cardboard disk separators and stretch wrapped onto a skid. Spool coil coils come stacked with hub mounted cardboard reels and also stretch wrapped onto a skid. Streamline® Level Wound Copper Tube is manufactured in various wall dimensions and diameters. Custom options and tempers can be quoted upon request.



- Seamless tube alloy made to C12200 DHP
- Copper material made to ASTM standard B743
- Custom O.D. wall and or tempers can be quoted as required
- Bulk packaging and spool packaging available

Copper Tube • Level Wound

O.D. Dia.	Wall	Sizes (lbs.)	Coil Width	Coils per Skid	Approx. Feet / Coil
0.250	0.028	180	7"	6	2377
0.250	0.030	180	7"	6	2239
0.313	0.032	180	7"	6	1643
0.375	0.028	180	7"	6	1521
0.375	0.030	180	7"	6	1428
0.375	0.035	180	7"	6	1242
0.500	0.028	180	7"	6	1118
0.500	0.032	180	7"	6	987
0.500	0.035	180	7"	6	908
0.625	0.032	180	9"	5	779
0.625	0.035	180	9"	5	716
0.625	0.040	180	9"	5	632
0.750	0.035	180	9"	5	591
0.875	0.038	180	9"	5	465
0.875	0.045	180	9"	5	396
1.125	0.050	180	9"	5	275

* Level Wound Copper Tube is available in Light Annealed, Soft Annealed and Hard Temper.

Bulk Packaging Information

Skids (43" X 43") | Coil ID = 26"
Stacked in with cardboard disk as separators
Plastic stretch wrapped on to a skid
Coils per skid are dependent on coil width

Spool Packaging Information

Skids (43" X 43")
Spools Diameter 42" O.D. | Hub Hole 5.25" I.D.
Stacked with cardboard reels and hubs mounted
Plastic stretch wrapped on to a skid
Coils per skid are dependent on coil width

Temper

050 = Light Annealed
060 = Soft Annealed
H58 = Hard

LINE SETS



Streamline® Line Sets have been an industry leader for decades. We leverage our many years of experience and expertise producing copper tube in every line set we make. From liquid line and suction line handling to unique insulation applications and packaging, every Streamline® Line Set meets our rigorous standards for quality and consistency. With a broad offering of liquid line and suction line diameters, insulation, thicknesses, custom ends and connections – plus a wide array of custom options, we're able to meet our customers most specialized and exacting needs.

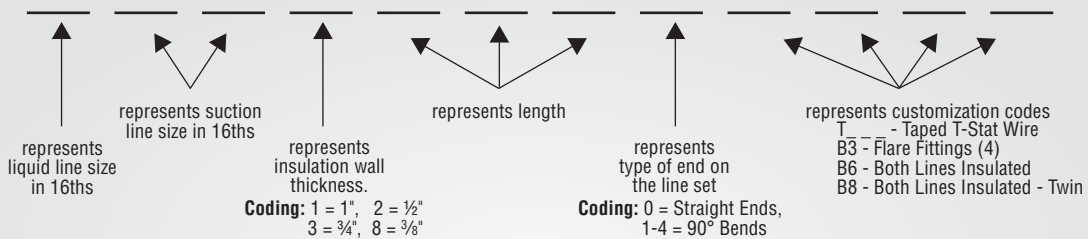


- UL-recognized at 700 PSI MWP
- R410A engineered & tested
- Proprietary manufacturing process allows for kink-free installation
- Copper tube made to ASTM B280

Custom Options Include:

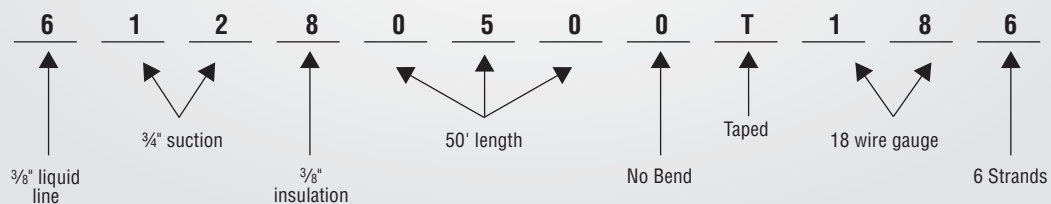
- Insulated liquid and suction lines for mini-split and twin tube systems
- Flare nuts, 90-degree bends, custom connections and assemblies
- Nitrogen and refrigerant charged lines
- Custom lengths
- Thermostat wire, mini-split wire or control cable, and taping

Line Sets Part Number Coding



EXAMPLE:

Part # 61280500T186



				STANDARD LINE SETS										
				Quantity per Master Carton										
Series No.	Liquid Line	Suction Line	Insulation	10'	15'	20'	25'	30'	35'	40'	45'	50'	60'	100'
406	1/4"	3/8"	3/8"	14	14	14	14	14	12	12	8	8	7	1
			1/2"	14	14	14	14	14	12	12	8	8	7	1
			3/4"	8	8	8	8	5	7	5	4	4	4	1
			1"	8	8	8	8	4	5	5	4	4	4	1
408	1/4"	1/2"	3/8"	14	14	14	14	14	12	12	8	7	7	1
			1/2"	14	14	14	14	12	8	8	7	5	1	
			3/4"	14	14	8	8	7	7	5	4	4	4	1
			1"	12	8	8	8	5	5	5	4	4	4	1
410	1/4"	5/8"	3/8"	14	14	14	14	12	8	8	8	8	7	1
			1/2"	14	14	12	12	8	8	8	7	7	5	1
			3/4"	12	12	12	8	7	7	7	5	5	1	
			1"	12	8	8	8	5	5	5	4	4	4	1
412	1/4"	3/4"	3/8"	14	14	14	12	12	8	8	7	7	5	1
			1/2"	14	14	12	8	8	7	7	5	5	4	1
			3/4"	12	12	8	8	5	5	5	4	4	4	1
			1"	12	8	8	8	5	5	5	4	4	4	1
510	5/16"	5/8"	3/8"	14	14	14	14	12	8	8	8	8	7	1
			1/2"	14	14	12	12	8	8	8	7	7	5	1
			3/4"	12	12	12	8	8	8	8	7	5	5	1
			1"	12	12	8	5	8	8	8	7	4	5	1
512	5/16"	3/4"	3/8"	14	14	14	12	12	8	8	7	7	5	1
			1/2"	14	14	12	8	8	7	7	5	5	4	1
			3/4"	12	8	8	8	5	5	5	4	4	4	1
			1"	12	8	8	5	5	5	5	4	4	4	1
514	5/16"	7/8"	3/8"	14	14	12	12	8	8	8	7	7	5	1
			1/2"	14	12	8	8	7	7	5	5	5	4	1
			3/4"	12	8	8	8	5	5	4	4	4	4	1
			1"	12	8	8	7	5	5	4	4	4	4	1
518	5/16"	1-1/8"	3/8"	8	8	8	8	7	7	5	5	5	5	1
			1/2"	8	8	8	8	7	5	5	4	4	4	1
			3/4"	8	7	7	7	5	4	4	4	4	4	1
			1"	8	7	7	7	5	4	4	4	4	4	1
610	3/8"	5/8"	3/8"	14	14	14	14	12	8	8	8	8	7	1
			1/2"	14	14	12	12	8	8	8	7	7	5	1
			3/4"	12	12	12	7	7	5	5	5	5	5	1
			1"	8	12	8	5	5	4	4	4	4	4	1
612	3/8"	3/4"	3/8"	14	14	14	12	12	8	8	7	7	5	1
			1/2"	14	12	12	8	8	7	7	5	5	4	1
			3/4"	12	8	8	8	5	5	5	4	4	4	1
			1"	12	8	8	5	5	4	4	4	4	4	1
614	3/8"	7/8"	3/8"	14	12	12	12	8	8	8	7	7	5	1
			1/2"	14	8	8	8	7	7	5	5	5	4	1
			3/4"	12	8	8	7	5	5	4	4	4	4	1
			1"	7	7	7	5	5	4	4	4	4	4	1
618	3/8"	1-1/8"	3/8"	8	8	8	8	7	7	5	5	5	5	-
			1/2"	8	8	8	8	7	5	5	4	4	4	-
			3/4"	8	7	7	7	5	4	4	4	4	4	-
			1"	8	7	7	7	5	4	4	4	4	4	-
810	1/2"	5/8"	3/8"	14	14	14	14	12	8	8	8	8	7	1
			1/2"	14	14	12	12	8	8	8	7	7	5	1
			3/4"	12	12	12	7	7	5	5	5	5	5	1
			1"	12	12	12	7	7	5	5	5	5	5	1
812	1/2"	3/4"	3/8"	14	14	14	12	12	8	8	7	7	5	1
			1/2"	14	14	12	8	8	7	7	5	5	4	1
			3/4"	12	8	8	8	5	5	5	4	4	4	1
			1"	12	8	8	8	5	5	5	4	4	4	1
814	1/2"	7/8"	3/8"	14	14	12	12	8	8	8	7	7	5	1
			1/2"	14	12	8	7	7	7	4	5	5	4	1
			3/4"	12	8	8	7	5	5	4	4	4	4	1
			1"	12	8	8	7	5	5	4	4	4	4	1
818	1/2"	1-1/8"	3/8"	8	8	8	8	8	7	5	5	5	5	-
			1/2"	8	8	8	8	8	5	5	4	4	4	-
			3/4"	8	7	7	7	5	4	4	4	4	4	-
			1"	8	7	7	7	5	4	4	4	4	4	-

Mini-Split Line Sets • Plain Ends

LIQUID LINE & SUCTION LINE INSULATED

Quantity per Master Carton

Series No.	Liquid Line	Suction Line	Insulation	15'	20'	25'	30'	35'	40'	45'	50'	100'
406	1/4"	3/8"	3/8"	14	14	14	14	12	12	8	8	1
			1/2"	14	14	14	14	8	12	8	7	1
			3/4"	14	8	7	7	7	5	4	5	1
408	1/4"	1/2"	3/8"	14	14	14	14	12	12	8	7	1
			1/2"	14	14	14	12	8	8	8	5	1
			3/4"	14	8	7	7	7	5	4	4	1
410	1/4"	5/8"	3/8"	14	14	14	12	8	8	8	8	1
			1/2"	14	14	8	8	8	8	7	7	1
			3/4"	12	12	7	7	7	7	7	5	1
610	3/8"	5/8"	3/8"	14	14	14	12	8	8	8	8	1
			1/2"	14	12	12	8	8	8	7	7	1
			3/4"	12	12	7	7	5	5	5	5	1
612	3/8"	3/4"	3/8"	14	14	12	12	8	8	7	7	1
			1/2"	14	12	8	8	7	7	5	5	1
			3/4"	8	8	8	5	5	5	4	4	1

Mini-Split Line Sets • Flare Fittings

LIQUID LINE & SUCTION LINE INSULATED

Quantity per Master Carton

Series No.	Liquid Line	Suction Line	Insulation	15'	20'	25'	30'	35'	40'	45'	50'	100'
406	1/4"	3/8"	3/8"	14	14	14	14	12	12	8	8	1
			1/2"	12	12	12	8	8	12	8	8	1
			3/4"	14	8	12	7	7	5	4	5	1
408	1/4"	1/2"	3/8"	14	14	14	14	12	12	8	7	1
			1/2"	14	12	14	12	8	8	8	7	1
			3/4"	14	8	8	7	7	5	4	5	1
410	1/4"	5/8"	3/8"	14	14	14	12	8	8	8	8	1
			1/2"	14	12	12	8	8	8	7	7	1
			3/4"	12	12	7	7	7	7	7	5	1
610	3/8"	5/8"	3/8"	14	14	14	12	8	8	8	8	1
			1/2"	14	12	12	8	8	8	7	7	1
			3/4"	12	12	7	7	5	5	5	5	1
612	3/8"	3/4"	3/8"	14	14	12	12	8	7	7	7	1
			1/2"	14	12	8	7	7	7	5	4	1
			3/4"	8	8	8	5	5	5	4	4	1

ABS DWV PIPE



Streamline® ABS DWV Pipe has consistent and dense cellular structure, plus a uniform pipe wall thickness for uncompromising, reliable performance. Smooth, consistent interior walls provide for full flow and increased resistance to corrosion and scaling. Dense and uniform cellular (foam) structure results in a stronger, more reliable and quiet product while uniform interior and exterior wall skins improve joint strength and reliability. Our proprietary manufacturing technologies combined with our relentless attention to quality and detail means our customers will enjoy the best pipe in the industry.



- For use in non-pressurized drain, waste and vent sanitary systems
- Dense and uniform cellular (foam) structure results in a stronger, more reliable and quiet product
- Superior resistance to chemicals and corrosion
- Smooth, consistent interior walls provide for full flow and increased resistance to corrosion and scaling
- Uniform interior and exterior wall skins improve joint strength and reliability
- Made to ASTM standard F628
- Meets NSF 14

ABS DWV Pipe – 10 FT

ABS DWV Schedule 40 Cellular Core, Plain End, Black, ASTM F-628

Nom. Dia.	Lengths	Part Number	Feet per Lift	Pieces per Lift	Weight (lbs.) per 100 ft.	Truckload % per Lift
1-1/2"	10 ft.	APC015010	2590	259	27.3	2.5
2"	10 ft.	APC020010	1670	167	37.8	2.5
3"	10 ft.	APC030010	750	75	74.5	2.5
4"	10 ft.	APC040010	480	48	103.9	2.5
6"	10 ft.	APC060010	180	18	186.9	2.5

ABS DWV Pipe – 20 FT

ABS DWV Schedule 40 Cellular Core, Plain End, Black, ASTM F-628

Nom. Dia.	Lengths	Part Number	Feet per Lift	Pieces per Lift	Weight (lbs.) per 100 ft.	Truckload % per Lift
1-1/2"	20 ft.	APC015020	5,180	259	27.3	5
2"	20 ft.	APC020020	3,340	167	37.8	5
3"	20 ft.	APC030020	1,500	75	74.5	5
4"	20 ft.	APC040020	960	48	103.9	5
6"	20 ft.	APC060020	360	18	186.9	5

Streamline[®]

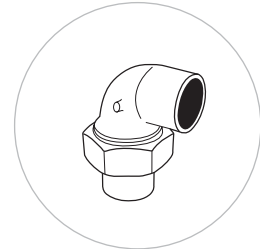
THE BEST FITTINGS IN THE JOINT.™



COPPER FITTINGS



▶ As originators of the solder-type copper fittings, our commitment to providing the highest quality fittings in the industry holds a special place. Today, our expansive line of Streamline® Copper Fittings are one of the industry's most complete offerings of fittings for copper piping systems from one source. Included are wrought and cast solder-joint pressure fittings, wrought and cast solder-joint DWV fittings and copper flare fittings. Our many years of engineering know-how and experience are reflected in the fine quality and workmanship of each copper fitting we manufacture.



- Copper Pressure Fittings
- Copper DWV Fittings
- Copper Flare Fittings

Streamline®

COPPER SOLDER-JOINT PRESSURE FITTINGS

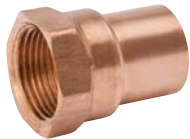


Streamline® Copper Solder-Joint Fittings for supply/pressurized systems have been the leading brand of copper fittings for over 80 years. Available in both wrot copper and cast bronze, our product selection has grown to become the most extensive in the industry. We are the acknowledged experts at engineering and manufacturing precision solder-joint copper fittings. Quality, consistency and reliability have made the Streamline® brand trusted and specified all around the world.



** Applies to Wrot fittings only.

- For use in above-ground potable water supply systems
- Constructed of high-grade copper or bronze materials
- Made to applicable ASME standards B16.15, B16.18, B16.22, B16.24, B16.50, B1.20.1
- Wrot fittings meet NSF 61G



Adapter • Female

C x FPT
Wrot Style #: WC-402
Cast Style #: C-102*



** Applies to Wrot Fittings only

(CONTINUED FROM PREVIOUS COLUMN)

Item No.	Diameter	Each Wt.	Inner Qty.	Master Carton
W 01207	1/8"	0.0355	100	1500
W 01215	1/4"	0.0446	50	750
W 01225	3/8"	0.0676	50	750
WB01231	1/2"	0.0983	50	500
WB01246	3/4"	0.1389	25	250
WB01263	1"	0.2535	10	100
W 01271	1-1/4"	0.4548	10	100
W 01279	1-1/2"	0.5329	10	100
W 01287	2"	0.565	1	50
W 01296	2-1/2"	1.224	1	25
W 01297	3"	1.833	1	15
A 01926*	4"	3.82	1	10
A 02007*	5"	9	1	5
W 01204	1/8" x 1/2"	0.1012	100	300
W 01205	1/8" x 3/8"	0.0525	100	700
W 01206	1/8" x 1/4"	0.0432	100	900
W 01214	1/4" x 3/8"	0.0626	50	1000
W 01216	1/4" x 1/8"	0.0313	100	1500
W 01223	3/8" x 3/4"	0.158	50	300

Item No.	Diameter	Each Wt.	Inner Qty.	Master Carton
W 01224	3/8" x 1/2"	0.0959	50	500
W 01226	3/8" x 1/4"	0.0557	50	750
WB01230	1/2" x 3/4"	0.1594	25	250
W 01232	1/2" x 3/8"	0.0708	50	500
W 01233	1/2" x 1/4"	0.0585	50	500
W 01238	5/8" x 3/4"	0.1538	50	500
W 01239	5/8" x 1/2"	0.0892	50	500
W 01245	3/4" x 1"	0.275	25	250
W 01247	3/4" x 1/2"	0.109	25	250
A 04122*	3/4" x 3/8"	0.17	50	200
W 01261	1" x 1-1/4"	0.28	10	100
W 01264	1" x 3/4"	0.216	25	250
W 01265	1" x 1/2"	0.2474	20	200
W 01270	1-1/4" x 1-1/2"	0.5026	10	100
W 01272	1-1/4" x 1"	0.3297	10	100
W 01278	1-1/2" x 2"	0.7374	1	60
W 01280	1-1/2" x 1-1/4"	0.3944	10	100
W 01288	2" x 1-1/2"	0.738	5	50



Adapter • Fitting

FTG x FPT
Wrot Style #: WC-405
Cast Style #: C-105*



** Applies to Wrot Fittings only.

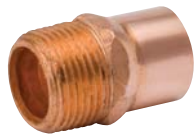
Item No.	Diameter	Each Wt.	Inner Qty.	Master Carton
W 01525	3/8"	0.0546	50	750
W 01531	1/2"	0.114	50	450
W 01546	3/4"	0.1721	25	250
W 01563	1"	0.2444	25	250
W 01571	1-1/4"	0.4022	10	100
W 01579	1-1/2"	0.4582	10	100
W 01587	2"	0.6535	1	50
W 01596	2-1/2"	1.2023	1	25
A 01779*	3"	2.33	1	20
W 01514	1/4" x 3/8"	0.058	50	750
W 01524	3/8" x 1/2"	0.0965	50	350
W 01526	3/8" x 1/4"	0.0586	50	750
W 01532	1/2" x 3/8"	0.0688	50	750
A 01480*	1/2" x 1/4"	0.105	50	500
W 01547	3/4" x 1/2"	0.1109	50	500
W 01564	1" x 3/4"	0.1807	25	250



Adapter • Special Drop

C x FPT
Cast Style #: C-102S*

Item No.	Diameter	Each Wt.	Inner Qty.	Master Carton
A 03948*	1/2"	0.1590	50	250



Adapter • Male

C x MPT
Wrot Style #: WC-401
Cast Style #: C-101*



** Applies to Wrot Fittings only.

Item No.	Diameter	Each Wt.	Inner Qty.	Master Carton
W 01107	1/8"	0.0158	50	1000
W 01115	1/4"	0.033	50	1200
W 01125	3/8"	0.0558	50	500
WB01131	1/2"	0.064	50	500
WB01146	3/4"	0.133	25	250
WB01163	1"	0.2365	10	100
W 01171	1-1/4"	0.4105	10	100
W 01179	1-1/2"	0.5145	10	100
W 01187	2"	0.573	5	50
W 01196	2-1/2"	1.257	1	20
W 01199	3"	1.704	1	20
W 01150	4"	3.711	1	16
A 01876*	4"	3.538	1	10
A 02005*	5"	8.6	1	5
A 02104*	6"	10.73	1	3
W 01105	1/8" x 3/8"	0.0604	50	750
W 01106	1/8" x 1/4"	0.0325	50	1200
W 01113	1/4" x 1/2"	0.0847	50	500
W 01114	1/4" x 3/8"	0.0571	50	1000

(CONTINUED NEXT COLUMN)

(CONTINUED FROM PREVIOUS COLUMN)

Item No.	Diameter	Each Wt.	Inner Qty.	Master Carton
W 01116	1/4" x 1/8"	0.0193	50	1000
W 01123	3/8" x 3/4"	0.1709	25	250
W 01124	3/8" x 1/2"	0.0921	50	500
W 01126	3/8" x 1/4"	0.053	50	750
W 01129	1/2" x 1"	0.2968	15	150
WB01130	1/2" x 3/4"	0.1725	25	250
W 01132	1/2" x 3/8"	0.0656	50	500
W 01133	1/2" x 1/4"	0.0554	25	600
W 01138	5/8" x 3/4"	0.141	25	250
W 01139	5/8" x 1/2"	0.1243	25	500
A 02547*	3/4" x 1-1/4"	0.375	10	100
W 01145	3/4" x 1"	0.2925	10	100
W 01147	3/4" x 1/2"	0.1201	25	250
W 01161	1" x 1-1/2"	0.4841	10	100
W 01162	1" x 1-1/4"	0.3856	10	100
W 01164	1" x 3/4"	0.1734	10	100
W 01165	1" x 1/2"	0.182	25	250
W 01170	1-1/4" x 1-1/2"	0.4834	10	100
W 01172	1-1/4" x 1"	0.2384	10	100
W 01173	1-1/4" x 3/4"	0.2137	10	100
W 01178	1-1/2" x 2"	0.776	1	50
W 01180	1-1/2" x 1-1/4"	0.3742	10	100
W 01181	1-1/2" x 1"	0.3838	10	100
W 01188	2" x 1-1/2"	0.6444	1	50
W 01189	2" x 1-1/4"	0.568	1	50
W 01197	2-1/2" x 2"	0.9794	1	20
W 01198	2-1/2" x 1-1/2"	0.9754	1	20



Adapter • Male (Flush)

C x MPT
Wrot Style #: 104-F
Cast Style #: C-101F*

Item No.	Diameter	Each Wt.	Inner Qty.	Master Carton
W 01136	1/2"	0.0274	5	1700
A 03637*	3/4"	0.0280	50	500



Adapter • Fitting

FTG x MPT
Wrot Style #: WC-404
Cast Style #: C-104*



** Applies to Wrot Fittings only.

Item No.	Diameter	Each Wt.	Inner Qty.	Master Carton
W 01425	3/8"	0.0534	50	750
W 01431	1/2"	0.0885	50	500
W 01446	3/4"	0.1538	50	500
W 01463	1"	0.2308	25	250
W 01471	1-1/4"	0.4108	10	100
W 01479	1-1/2"	0.4914	10	100
W 01487	2"	0.7552	1	50
W 01496	2-1/2"	1.9502	1	20
A 01778*	3"	2.214	1	25
W 01432	1/2" x 3/8"	0.0626	50	750
A 01474*	3/4" x 1"	0.27	25	250
W 01447	3/4" x 1/2"	0.1304	25	250
W 01464	1" x 3/4"	0.1855	25	250

COPPER FITTINGS | COPPER PRESSURE FITTINGS



Air Chamber

FTG
Wrot Style #: WA-515



Item No.	Diameter	Each Wt.	Inner Qty.	Master Carton
W 06000	1/2" x 6"	0.2229	1	100
W 06001	1/2" x 12"	0.4203	1	50
W 06002	3/4" x 12"	0.4063	1	72



Bushing • Flush

FTG x C
Wrot Style #: WC-106



Item No.	Diameter	Each Wt.	Inner Qty.	Master Carton
W 01706	1/4" x 1/8"	0.0079	100	3400
W 01712	3/8" x 1/4"	0.0137	100	3400
W 01714	3/8" x 1/8"	0.022	100	2400
W 01715	1/2" x 3/8"	0.0197	100	1500
W 01717	1/2" x 1/4"	0.0446	100	1500
W 01720	5/8" x 1/2"	0.0314	50	750
W 01721	5/8" x 3/8"	0.0575	50	750
W 01722	5/8" x 1/4"	0.0765	50	750
W 01725	3/4" x 5/8"	0.0419	50	500
W 01726	3/4" x 1/2"	0.0738	50	500
W 01727	3/4" x 3/8"	0.1113	50	500
W 01737	1" x 3/4"	0.1249	50	500
W 01738	1" x 5/8"	0.1779	50	500
W 01739	1" x 1/2"	0.2193	25	250
W 01743	1-1/4" x 1"	0.1614	10	200
W 01745	1-1/4" x 3/4"	0.298	10	200
W 01750	1-1/2" x 1-1/4"	0.219	10	100
W 01751	1-1/2" x 1"	0.4073	10	100
W 01758	2" x 1-1/2"	0.6752	10	100
W 01759	2" x 1-1/4"	0.9419	5	50
W 01767	2-1/2" x 2"	0.9225	1	50



Bushing • Flush

FTGx FPT
Wrot Style #: WC-417
(Brass)



Item No.	Diameter	Each Wt.	Inner Qty.	Master Carton
A 07813	1/2" x 1/4"	0.0218	50	1200
A 07812	1/2" x 1/8"	0.0363	100	1600
A 07814	3/4" x 3/8"	0.0804	50	600
A 07815	1" x 1/2"	0.1658	50	300
A 07816	1-1/4" x 3/4"	0.2488	10	160
A 07817	1-1/2" x 1"	0.3388	10	120
A 07819	2" x 1-1/2"	0.4825	10	60



Cap

C
Wrot Style #: WC-415
Cast Style #: C-115*



** Applies to Wrot Fittings only

Item No.	Diameter	Each Wt.	Inner Qty.	Master Carton
W 07002	1/8"	0.0033	50	2000
W 07004	1/4"	0.0056	50	2000
W 07006	3/8"	0.0125	50	1000
WB07007	1/2"	0.0188	50	1000
W 07008	5/8"	0.0319	50	1000
WB07009	3/4"	0.043	25	1000
WB07011	1"	0.0775	10	500
W 07012	1-1/4"	0.1058	25	250
W 07013	1-1/2"	0.175	25	250
W 07014	2"	0.3	1	100
W 07015	2-1/2"	0.475	1	50
W 07016	3"	0.725	1	50
W 07017	3-1/2"	1.15	1	25
W 07018	4"	1.5	1	20
A 02016*	5"	5.484	1	5
A 02115*	6"	9.67	1	5



Coupling • No Stop

C x C
Wrot Style #: WC-400NS



Item No.	Diameter	Each Wt.	Inner Qty.	Master Carton
W 01900	1/8"	0.0046	100	3400
W 01901	1/4"	0.008	50	1700
W 01902	3/8"	0.0148	50	1700
W 01903	1/2"	0.0253	100	1000
W 01904	5/8"	0.044	25	375
W 01905	3/4"	0.0628	50	500
W 01906	1"	0.1075	25	250
W 01907	1-1/4"	0.1483	25	250
W 01908	1-1/2"	0.248	10	100
W 01909	2"	0.399	1	75
W 01910	2-1/2"	0.6643	1	50
W 01911	3"	1.0296	1	25
W 01913	4"	2.1467	1	15



Coupling • Rolled Stop

C x C
Wrot Style #: WC-400



Item No.	Diameter	Each Wt.	Inner Qty.	Master Carton
W 01003	1/8"	0.0046	100	3400
W 01009	1/4"	0.008	50	1700
W 01017	3/8"	0.0149	50	1700
WB01022	1/2"	0.0253	50	1000
W 01028	5/8"	0.045	50	500
WB01034	3/4"	0.0628	25	500
WB01047	1"	0.1075	10	250

(CONTINUED NEXT COLUMN)

*Cast Bronze

(CONTINUED FROM PREVIOUS COLUMN)

Item No.	Diameter	Each Wt.	Inner Qty.	Master Carton
W 01055	1-1/4"	0.1530	25	250
W 01063	1-1/2"	0.2070	10	100
W 01072	2"	0.3960	1	75
W 01082	2-1/2"	0.6630	1	50
W 01092	3"	1.0290	1	25
W 010100	3-1/2"	1.1786	1	20
W 010107	4"	2.1050	1	15



Coupling • Staked Stop

C x C
Wrot Style #: WC-400S



Item No.	Diameter	Each Wt.	Inner Qty.	Master Carton
W 10141	1/8"	0.0046	100	3400
W 10143	1/4"	0.0080	50	1700
W 10144	3/8"	0.0150	50	1700
W 10145	1/2"	0.0253	100	1000
W 10157	5/8"	0.0431	25	500
W 10146	3/4"	0.0628	50	500
W 10147	1"	0.1075	25	250
W 10148	1-1/4"	0.1484	25	250
W 10149	1-1/2"	0.2170	10	100
W 10150	2"	0.4090	1	75
W 10151	2-1/2"	0.6640	1	50
W 10152	3"	1.0230	1	25
W 10153	3-1/2"	1.0340	1	20
W 10154	4"	2.1510	1	15
W 10155	5"	3.3373	1	8
W 10156	6"	4.6125	1	3
W 10130	8"	14.130	0	1



Coupling • Reducing

C x C
Wrot Style #: WC-400R



Item No.	Diameter	Each Wt.	Inner Qty.	Master Carton
W 01011	1/4" x 1/8"	0.0072	50	1700
W 01019	3/8" x 1/4"	0.0150	50	1700
W 01021	3/8" x 1/8"	0.0161	50	1200
W 01023	1/2" x 3/8"	0.0291	100	1000
W 01025	1/2" x 1/4"	0.0292	100	1000
W 01027	1/2" x 1/8"	0.0293	100	1000
W 01029	5/8" x 1/2"	0.0454	100	600
W 01030	5/8" x 3/8"	0.0373	100	600
W 01031	5/8" x 1/4"	0.0416	100	600
W 01035	3/4" x 5/8"	0.0614	100	1000
WB01036	3/4" x 1/2"	0.0788	25	500
W 01037	3/4" x 3/8"	0.0576	50	500
W 01038	3/4" x 1/4"	0.0566	50	500
W 01049	1" x 3/4"	0.1332	25	250
W 01050	1" x 5/8"	0.1127	25	250
W 01051	1" x 1/2"	0.1089	25	250
W 01052	1" x 3/8"	0.1092	25	250
W 01056	1-1/4" x 1"	0.1954	10	100

(CONTINUED NEXT COLUMN)

(CONTINUED FROM PREVIOUS COLUMN)

Item No.	Diameter	Each Wt.	Inner Qty.	Master Carton
W 01058	1-1/4" x 3/4"	0.1703	10	100
W 01060	1-1/4" x 1/2"	0.1660	10	100
W 01064	1-1/2" x 1-1/4"	0.2310	10	100
W 01065	1-1/2" x 1"	0.2310	10	100
W 01067	1-1/2" x 3/4"	0.2385	10	100
W 01069	1-1/2" x 1/2"	0.2240	10	100
W 01073	2" x 1-1/2"	0.4280	1	100
W 01074	2" x 1-1/4"	0.4250	1	100
W 01075	2" x 1"	0.4580	1	100
W 01077	2" x 3/4"	0.4014	1	100
W 01079	2" x 1/2"	0.4060	1	75
W 01083	2-1/2" x 2"	0.6490	1	50
W 01084	2-1/2" x 1-1/2"	0.7463	1	50
W 01085	2-1/2" x 1-1/4"	0.6983	1	50
W 01086	2-1/2" x 1"	0.7079	1	50
W 01093	3" x 2-1/2"	1.0647	1	25
W 01094	3" x 2"	1.0953	1	25
W 01095	3" x 1-1/2"	1.0103	1	25
W 10101	3-1/2" x 3"	1.2194	1	25
W 10108	4" x 3-1/2"	1.8692	1	20
W 10109	4" x 3"	0.7604	1	20
W 10110	4" x 2-1/2"	1.8789	1	15
W 10111	4" x 2"	1.9666	1	20
W 10116	5" x 4"	3.3100	1	1
W 10123	6" x 4"	4.8200	1	1
W 10124	6" x 3"	4.8500	1	1



Coupling • Cross Over

C x C
Wrot Style #: WC-412



Item No.	Diameter	Each Wt.	Inner Qty.	Master Carton
A 02535	1/2"	0.1188	5	100
A 02583	3/4"	0.2559	5	50



Coupling • Drain

C x C
Cast Style #: CD-100*

Item No.	Diameter	Each Wt.	Inner Qty.	Master Carton
A 11547*	1/2"	0.0770	10	200
A 11548*	3/4"	0.1370	25	250
A 11549*	1"	0.2190	10	100

*Cast Bronze

COPPER FITTINGS | COPPER PRESSURE FITTINGS



Coupling • Eccentric

C x C
Cast Style #: CE-100*

Item No.	Diameter	Each Wt.	Inner Qty.	Master Carton
A 04340*	3/4" x 1/2"	0.1090	50	250
A 04341*	1" x 3/4"	0.1750	25	250
A 04342*	1-1/4" x 1"	0.2500	10	100
A 04343*	1-1/4" x 3/4"	0.2420	10	100



Coupling • High Ear

C
Cast Style #: C-100HE*

Item No.	Diameter	Each Wt.	Inner Qty.	Master Carton
A 03067*	1/2"	0.0620	100	1000
A 03068*	3/4"	0.0900	25	500
A 03071*	1"	0.1310	25	250



Cross

C x C x C x C
Cast Style #: T-312*

Item No.	Diameter	Each Wt.	Inner Qty.	Master Carton
A 02532*	1/2"	0.1400	25	250
A 02579*	3/4"	0.2980	10	100
A 02612*	1"	0.5400	5	100
A 02649*	1-1/4"	0.7420	5	50
A 02672*	1-1/2"	1.0470	1	50
A 02707*	2"	2.0000	1	25
A 02734*	2-1/2"	2.9100	1	15



45° Elbow

C x C
Wrot Style #: WE-504



Item No.	Diameter	Each Wt.	Inner Qty.	Master Carton
W 03005	1/8"	0.0066	50	1700
W 03012	1/4"	0.0125	50	1700
W 03021	3/8"	0.0257	25	850
W 03026	1/2"	0.0360	50	500
W 03030	5/8"	0.0590	50	500
WB03034	3/4"	0.0900	25	250
WB03044	1"	0.1560	10	200
W 03050	1-1/4"	0.2500	10	100
W 03055	1-1/2"	0.3570	10	100
W 03059	2"	0.6020	10	50
W 03063	2-1/2"	0.9950	5	25
W 03067	3"	1.5320	2	20
W 03070	3-1/2"	2.8137	2	10
W 03073	4"	3.1418	1	5
W 03074	5"	6.5640	1	1
W 03075	6"	10.6360	1	1

*Cast Bronze



45° Elbow

FTG x FTG
Wrot Style #: WE-507



Item No.	Diameter	Each Wt.	Inner Qty.	Master Carton
W 03621	3/8"	0.0212	50	1700
W 03626	1/2"	0.0366	50	750
W 03634	3/4"	0.0958	25	250
W 03644	1"	0.1775	10	100



45° Elbow • Street

FTG x C
Wrot Style #: WE-505



Item No.	Diameter	Each Wt.	Inner Qty.	Master Carton
W 03312	1/4"	0.0106	100	3400
W 03321	3/8"	0.0268	100	1500
WB03326	1/2"	0.0348	50	500
W 03330	5/8"	0.0570	50	500
WB03334	3/4"	0.0912	25	250
W 03344	1"	0.1520	25	250
W 03350	1-1/4"	0.2440	10	100
W 03355	1-1/2"	0.3270	10	100
W 03359	2"	0.6050	5	50
W 03363	2-1/2"	1.0485	2	20
W 03368	3"	1.5163	2	10
W 03373	4"	3.1146	1	5



90° Elbow • Short Radius

C x C
Wrot Style #: WE-500
Cast Style #: E-200*



** Applies to Wrot Fittings only

Item No.	Diameter	Each Wt.	Inner Qty.	Master Carton
W 02003	1/8"	0.0078	50	1700
W 02009	1/4"	0.0173	50	1700
W 01617	3/8"	0.0279	50	750
WB01622	1/2"	0.0410	50	500
W 02028	5/8"	0.0840	50	500
WB01634	3/4"	0.0943	25	250
WB01647	1"	0.1820	10	100
W 02084	1-1/4"	0.3030	10	100
W 02085	1-1/2"	0.4230	10	100
W 02086	2"	0.7600	10	50
W 02087	2-1/2"	1.1920	5	25
W 02088	3"	1.8820	5	25
W 02089	3-1/2"	2.7699	2	10
W 02090	4"	3.9976	2	10
W 02096	5"	8.5860	1	1
W 02097	6"	13.7262	1	1
W 02099	8"	27.0000	1	1
W 02011	1/4" x 1/8"	0.0165	50	750
W 02019	3/8" x 1/4"	0.0267	50	750

(CONTINUED NEXT COLUMN)

(CONTINUED FROM PREVIOUS COLUMN)

Item No.	Diameter	Each Wt.	Inner Qty.	Master Carton
W 02023	1/2" x 3/8"	0.0451	50	500
W 02025	1/2" x 1/4"	0.0456	50	500
W 02029	5/8" x 1/2"	0.0610	50	500
W 02030	5/8" x 3/8"	0.0667	50	500
W 02035	3/4" x 5/8"	0.1064	50	500
W 02036	3/4" x 1/2"	0.1050	50	500
W 02037	3/4" x 3/8"	0.1056	50	500
W 02049	1" x 3/4"	0.1710	25	250
W 02050	1" x 5/8"	0.1640	25	250
W 02051	1" x 1/2"	0.1799	25	250
W 02052	1" x 3/8"	0.1990	25	150
W 02056	1-1/4" x 1"	0.3163	20	200
A 02638*	1-1/4" x 3/4"	0.3380	10	100
A 03826*	1-1/4" x 1/2"	0.2800	10	100
W 02077	1-1/2" x 1-1/4"	0.3300	5	100
A 02663*	1-1/2" x 1"	0.5510	10	100
A 03905*	1-1/2" x 3/4"	0.4250	10	100
W 02078	2" x 1-1/2"	0.6000	5	50
A 02691*	2" x 1-1/4"	0.9130	5	50
A 02724*	2" x 1"	0.7800	5	50
A 02725*	2-1/2" x 2"	2.1620	1	10
A 02777*	3" x 2-1/2"	2.7620	1	20
A 02778*	3" x 2"	2.6800	1	10
A 01932*	4" x 3"	5.1800	1	5



90° Elbow • Long Radius

C x C
Wrot Style #: WE-500L



Item No.	Diameter	Each Wt.	Inner Qty.	Master Carton
W 02715	1/8"	0.0101	50	1700
W 02716	1/4"	0.0240	50	1700
W 02717	3/8"	0.0420	50	500
W 02722	1/2"	0.0590	50	500
W 02728	5/8"	0.0930	50	500
W 02734	3/4"	0.1293	25	250
W 02747	1"	0.2690	10	100
W 02055	1-1/4"	0.4210	10	100
W 02063	1-1/2"	0.6040	5	50
W 02072	2"	1.2280	5	25
W 02082	2-1/2"	2.0540	5	25
W 02092	3"	3.1250	2	10
W 02093	3-1/2"	5.5310	1	5
W 02095	4"	7.9780	0	1
W 02711	1/4" x 1/8"	0.0110	50	3000
W 02719	3/8" x 1/4"	0.0260	50	1000
W 02723	1/2" x 3/8"	0.0400	50	500
W 02725	1/2" x 1/4"	0.0300	50	1000
W 02735	3/4" x 5/8"	0.1200	25	250
W 02736	3/4" x 1/2"	0.0900	50	400
W 02749	1" x 3/4"	0.1700	10	200
W 02756	1-1/4" x 1"	0.3100	10	100
W 02064	1-1/2" x 1-1/4"	0.4351	5	50
W 02065	1-1/2" x 1"	0.5166	5	50
W 02067	1-1/2" x 3/4"	0.5127	5	50
W 02073	2" x 1-1/2"	0.9844	2	20
W 02074	2" x 1-1/4"	0.9437	2	20
W 02075	2" x 1"	0.9654	2	20
W 02083	2-1/2" x 2"	1.5277	2	20



90° Elbow Short Radius • Street

FTG x C
Wrot Style #: WE-503



Item No.	Diameter	Each Wt.	Inner Qty.	Master Carton
W 02305	1/8"	0.0082	50	1700
W 02312	1/4"	0.0174	50	1700
W 02321	3/8"	0.0300	50	750
WB01652	1/2"	0.0400	50	500
W 02330	5/8"	0.0900	25	250
WB01654	3/4"	0.0954	25	250
WB02344	1"	0.2180	10	100
W 02384	1-1/4"	0.2940	25	125
W 02385	1-1/2"	0.4410	10	100
W 02386	2"	0.7692	10	50
W 02387	2-1/2"	1.2310	5	25
W 02388	3"	1.9440	2	20
W 02389	3-1/2"	2.7809	1	10
W 02390	4"	4.0338	2	10



90° Elbow Long Radius • Street

FTG x C
Wrot Style #: WE-503L



Item No.	Diameter	Each Wt.	Inner Qty.	Master Carton
W 02809	1/4"	0.0236	50	1700
W 02817	3/8"	0.0401	50	500
W 02822	1/2"	0.0590	50	500
W 02828	5/8"	0.0943	25	250
W 02834	3/4"	0.1283	25	250
W 02847	1"	0.2585	10	100
W 02350	1-1/4"	0.4225	10	100
W 02355	1-1/2"	0.6020	5	50
W 02359	2"	1.2327	5	25
W 02363	2-1/2"	2.0800	5	25
W 02368	3"	3.1200	2	10
W 02393	3-1/2"	5.5179	1	5
W 02395	4"	8.0678	0	1



90° Elbow • Short Radius

FTG x FTG
Wrot Style #: WE-506



Item No.	Diameter	Each Wt.	Inner Qty.	Master Carton
W 02612	1/4"	0.0153	50	1700
W 02621	3/8"	0.0340	50	750
W 02626	1/2"	0.0493	50	500
W 02634	3/4"	0.1093	25	250
W 02644	1"	0.2178	10	100
W 02684	1-1/4"	0.3064	10	100
W 02685	1-1/2"	0.4251	5	50
W 02686	2"	0.7860	1	10
W 02687	2-1/2"	1.2530	1	10
W 02688	3"	2.0831	1	10
W 02689	3-1/2"	2.6250	1	10
W 02690	4"	3.8750	1	5

COPPER FITTINGS | COPPER PRESSURE FITTINGS



90° Elbow • Long Radius

FTG x FTG
Wrot Style #: WE-506L



Item No.	Diameter	Each Wt.	Inner Qty.	Master Carton
W 02650	1-1/4"	0.4364	5	50
W 02655	1-1/2"	0.6282	5	50
W 02659	2"	1.2321	1	10



90° Elbow • Flanged Sink

C x FPT
Cast Style #: E-215*

Item No.	Diameter	Each Wt.	Inner Qty.	Master Carton
A 03706*	1/2"	0.1990	25	250



90° Elbow • Drop Ear

C x C
Cast Style #: E-210*

Item No.	Diameter	Each Wt.	Inner Qty.	Master Carton
A 02508*	1/2"	0.1170	50	500
A 02556*	3/4"	0.2280	10	200



90° Elbow

C x FPT
Cast Style #: E-202*

Item No.	Diameter	Each Wt.	Inner Qty.	Master Carton
A 01397*	3/8"	0.0900	50	500
A 01507*	1/2"	0.2200	25	150
A 01532*	3/4"	0.1890	25	150
A 01559*	1"	0.4380	10	100
A 01594*	1-1/4"	0.7070	5	50
A 01632*	1-1/2"	0.9120	5	50
A 01680*	2"	1.4580	1	25



90° Elbow • High Ear

C x C
Cast Style #: E-210HE*

Item No.	Diameter	Each Wt.	Inner Qty.	Master Carton
A 03040*	1/2"	0.1260	25	250
A 03070*	3/4"	0.2130	10	100



90° Elbow • Reducing

C x FPT
Cast Style #: E-202*

Item No.	Diameter	Each Wt.	Inner Qty.	Master Carton
A 01379*	3/8" x 1/2"	0.1300	50	500
A 02512*	1/2" x 3/4"	0.1830	25	250
A 01520*	1/2" x 3/8"	0.0850	25	500
A 02559*	3/4" x 1"	0.3580	10	100
A 02560*	3/4" x 1/2"	0.1980	25	250
A 02609*	1" x 3/4"	0.3300	10	100



90° Elbow • Union

C x C
Cast Style #: E-207*

Item No.	Diameter	Each Wt.	Inner Qty.	Master Carton
A 11431*	3/8"	0.1670	25	250
A 11432*	1/2"	0.2430	25	250
A 11433*	3/4"	0.3940	10	100
A 11434*	1"	0.6360	5	50
A 11435*	1-1/4"	1.0680	5	50



90° Elbow • Drop Ear

C x FPT
Cast Style #: E-211*

Item No.	Diameter	Each Wt.	Inner Qty.	Master Carton
A 01367*	3/8"	0.1200	50	500
A 01508*	1/2"	0.1510	25	250
A 02581*	3/4"	0.2400	25	100
A 02849*	1"	0.4850	10	100
A 01361*	3/8" x 1/2"	0.1800	50	500
A 02513*	1/2" x 3/8"	0.1650	50	250
A 02850*	3/4" x 1/2"	0.2400	25	250



90° Elbow • w/Drain

C x C
Cast Style #: E-200D*

Item No.	Diameter	Each Wt.	Inner Qty.	Master Carton
A 11555*	1/2"	0.1000	50	500
A 11556*	3/4"	0.1970	25	250
A 11557*	1"	0.3070	10	100



90° Elbow • High Ear

C x FPT
Cast Style #: E-211HE*

Item No.	Diameter	Each Wt.	Inner Qty.	Master Carton
A 03038*	1/2"	0.1970	25	250
A 03048*	3/4"	0.2950	25	150



90° Elbow • w/Union

C x FPT
Cast Style #: E-209*

Item No.	Diameter	Each Wt.	Inner Qty.	Master Carton
A 11452*	1/2"	0.3090	10	100
A 11453*	3/4"	0.4860	10	100
A 11454*	1"	0.7890	5	50



90° Elbow • w/Union

C x MPT
Cast Style #: E-208*

Item No.	Diameter	Each Wt.	Inner Qty.	Master Carton
A 11441*	3/8"	0.2060	10	200
A 11442*	1/2"	0.2990	10	100
A 11443*	3/4"	0.4870	10	100
A 11444*	1"	0.7250	5	50
A 11445*	1-1/4"	1.1580	5	50



90° Elbow

C x MPT
Cast Style #: E-201*

Item No.	Diameter	Each Wt.	Inner Qty.	Master Carton
A 01396*	3/8"	0.0800	50	500
A 01506*	1/2"	0.1140	50	250
A 01531*	3/4"	0.2270	25	125
A 01558*	1"	0.3900	10	100
A 01593*	1-1/4"	0.5840	10	50
A 01631*	1-1/2"	0.7690	5	50
A 01679*	2"	1.3800	1	25
A 02509*	1/2" x 3/4"	0.2010	25	250
A 02510*	1/2" x 3/8"	0.1000	25	500
A 02557*	3/4" x 1"	0.3300	10	100
A 02558*	3/4" x 1/2"	0.1800	10	200



90° Fitting Reducer

FTG x C
Wrot Style #: WC-403



Item No.	Diameter	Each Wt.	Inner Qty.	Master Carton
W 01306	1/4" x 1/8"	0.0143	50	1700
W 01312	3/8" x 1/4"	0.0152	50	1700
W 01314	3/8" x 1/8"	0.0127	50	1700
W 01315	1/2" x 3/8"	0.0272	50	750
W 01317	1/2" x 1/4"	0.0246	50	1700
W 01320	5/8" x 1/2"	0.0419	100	1000
W 01321	5/8" x 3/8"	0.0401	100	900
W 01322	5/8" x 1/4"	0.0356	100	900
W 01325	3/4" x 5/8"	0.0574	50	500
W 01326	3/4" x 1/2"	0.0641	50	500
W 01327	3/4" x 3/8"	0.0564	50	500
W 01328	3/4" x 1/4"	0.0490	50	1000
W 01337	1" x 3/4"	0.1131	25	250
W 01338	1" x 5/8"	0.1028	25	250
W 01339	1" x 1/2"	0.1002	25	250
W 01340	1" x 3/8"	0.0986	20	200
W 01343	1-1/4" x 1"	0.1744	10	100
W 01345	1-1/4" x 3/4"	0.1670	10	100
W 01347	1-1/4" x 1/2"	0.1563	10	100
W 01350	1-1/2" x 1-1/4"	0.2330	10	100
W 01351	1-1/2" x 1"	0.2370	10	100
W 01353	1-1/2" x 3/4"	0.2284	10	100
W 01355	1-1/2" x 1/2"	0.2190	10	100
W 01358	2" x 1-1/2"	0.4360	1	100
W 01359	2" x 1-1/4"	0.4320	1	100
W 01360	2" x 1"	0.4460	1	100
W 01362	2" x 3/4"	0.4268	1	100
W 01364	2" x 1/2"	0.4155	1	100
W 01367	2-1/2" x 2"	0.6180	1	50
W 01368	2-1/2" x 1-1/2"	0.5714	1	50
W 01369	2-1/2" x 1-1/4"	0.6214	1	50
W 01370	2-1/2" x 1"	0.6300	1	50
W 01376	3" x 2-1/2"	0.9997	1	25
W 01377	3" x 2"	0.8942	1	25
W 01378	3" x 1-1/2"	0.9159	1	50
W 01379	3" x 1-1/4"	1.0146	1	50
W 01381	3-1/2" x 3"	1.2756	1	20
W 01382	3-1/2" x 2-1/2"	1.3721	1	20
W 01383	3-1/2" x 2"	1.4670	1	20
W 01386	4" x 3-1/2"	1.7416	1	20
W 01387	4" x 3"	1.7657	1	15
W 01388	4" x 2-1/2"	1.8293	1	15
W 01389	4" x 2"	1.8577	1	15
W 01390	5" x 4"	3.2400	1	1
W 01391	5" x 3"	2.7600	1	1
W 01393	5" x 2"	2.6600	1	1
W 01394	6" x 5"	4.8000	1	1
W 01395	6" x 4"	4.3200	1	1
W 01396	6" x 3"	4.4900	1	1

COPPER FITTINGS | COPPER PRESSURE FITTINGS



Flange (Companion) • Class 125

C x Flange
Cast Style #: F-940*

Item No.	Diameter	Each Wt.	Inner Qty.	Master Carton
A 02881*	1/2"	0.4870	1	50
A 02882*	3/4"	0.7110	1	50
A 02883*	1"	0.9890	1	12
A 02884*	1-1/4"	1.1420	1	12
A 02885*	1-1/2"	1.6410	1	10
A 02886*	2"	2.7420	1	8
A 02887*	2-1/2"	3.7940	1	6
A 02888*	3"	4.9500	1	6
A 02889*	4"	6.8980	1	2
A 02890*	5"	9.0390	1	2
A 02891*	6"	13.1800	1	2
A 04152*	8"	25.9000	1	1



Flange (Companion) • Class 150

C x Flange
Cast Style #: F-900*

Item No.	Diameter	Each Wt.	Inner Qty.	Master Carton
A 04114*	3/4"	1.1470	1	40
A 02933*	1"	1.5930	1	12
A 03806*	1-1/4"	2.0370	1	12
A 03907*	1-1/2"	2.4330	1	12
A 02980*	2"	3.6700	1	8
A 02746*	2-1/2"	5.8290	1	6
A 02802*	3"	7.4470	1	6
A 01940*	4"	10.3500	1	2
A 02052*	5"	15.6880	1	2
A 02149*	6"	17.9140	1	2



Plug • Fitting

FTG
Wrot Style #: WC-416
(Brass)



Item No.	Diameter	Each Wt.	Inner Qty.	Master Carton
A 01402	1/8"	0.0073	50	500
A 01392	3/8"	0.0200	50	2000
A 01504	1/2"	0.0305	50	1200
A 01529	3/4"	0.0700	50	600
A 01556	1"	0.1208	25	300
A 01590	1-1/4"	0.1950	180	180
A 01628	1-1/2"	0.2822	10	120



P-Trap • Pressure

C x C
Wrot Style #: WE-554P



Item No.	Diameter	Each Wt.	Inner Qty.	Master Carton
W 60999	1/2"	0.3794	10	50
W 61008	5/8"	0.5100	10	50
W 61000	3/4"	0.6260	5	25
W 61001	1"	0.8720	3	15
W 61002	1-1/4"	1.1639	4	20
W 61003	1-1/2"	2.2755	1	4
W 61009	2"	3.8732	1	3



Return Bend

C x C
Wrot Style #: WE-512



Item No.	Diameter	Each Wt.	Inner Qty.	Master Carton
W 06025	1/4" x 4-1/2"	0.0958	25	150
W 06020	1/4" x 1-1/2"	0.0164	25	850
W 06048	3/8" x 6"	0.2078	100	100
W 06045	3/8" x 4"	0.1424	200	200
W 06041	3/8" x 3"	0.1133	25	250
W 06036	3/8" x 2"	0.0600	50	300
W 06035	3/8" x 1-29/32"	0.0752	50	300
W 06032	3/8" x 1-1/2"	0.0623	50	500
W 06069	1/2" x 6"	0.2990	5	30
W 06062	1/2" x 3-3/8"	0.1800	10	100
W 06060	1/2" x 3"	0.1632	25	150
W 06058	1/2" x 2-1/2"	0.1436	25	250
W 06056	1/2" x 2-1/4"	0.1272	25	250
W 06053	1/2" x 1-7/8"	0.1100	25	250
W 06051	1/2" x 1-9/16"	0.0966	25	250
W 06084	5/8" x 4"	0.2462	120	120
W 06081	5/8" x 3-3/8"	0.2352	10	90
W 06077	5/8" x 2-1/2"	0.1717	10	100
W 06074	5/8" x 2"	0.1515	10	100
W 06099	3/4" x 12"	0.8765	15	15
W 06095	3/4" x 3-3/8"	0.2899	10	100
W 06092	3/4" x 2-1/2"	0.2301	10	100
W 60111	1" x 3-1/4"	0.4890	5	50
W 60110	1" x 3"	0.4700	5	50
W 60121	1-1/4" x 3-3/4"	0.6467	5	50
W 60131	1-1/2" x 4-1/2"	0.9955	1	25
W 60140	2" x 5-1/2"	1.9200	1	15

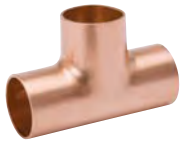


Return Bend • Closed

C x C
Cast Style #: E-212*

Item No.	Diameter	Each Wt.	Inner Qty.	Master Carton
A 04106*	3/4" x 1-5/16"	0.2910	10	100

*Cast Bronze



Tee

C x C x C
Wrot Style #: WT-600



Item No.	Diameter	Each Wt.	Inner Qty.	Master Carton
W 40306	1/8"	0.0095	100	2400
W 04000	1/4"	0.0220	50	1700
W 04001	3/8"	0.0429	50	500
WB04006	1/2"	0.0655	50	500
W 04017	5/8"	0.1161	25	250
WB04031	3/4"	0.1550	25	200
WB04048	1"	0.2932	10	100
W 04068	1-1/4"	0.4220	5	50
W 04084	1-1/2"	0.5974	5	50
W 40102	2"	1.1410	5	25
W 40123	2 1/2"	1.7240	2	20
W 40152	3"	2.7700	2	10
W 40190	3-1/2"	5.6586	1	5
W 40200	4"	5.9870	1	5
W 40400	5"	12.3840	1	1
W 40500	6"	20.8500	0	1
W 40525	8"	36.8100	0	1



Tee • Reducing

C x C x C
Wrot Style #: WT-600
Cast Style #: T-300*



** Applies to Wrot Fittings only

Item No.	Diameter	Each Wt.	Inner Qty.	Master Carton
W 40368	1/8" x 1/8" x 1/4"	0.0273	50	750
W 04016	1/4" x 1/4" x 1/2"	0.0843	50	500
W 04005	1/4" x 1/4" x 3/8"	0.0378	50	500
W 40324	1/4" x 1/4" x 1/8"	0.0194	50	1700
W 40330	1/4" x 1/8" x 1/4"	0.0227	50	500
W 40332	1/4" x 1/8" x 1/8"	0.0223	50	1700
W 04015	3/8" x 3/8" x 1/2"	0.0944	50	500
W 04002	3/8" x 3/8" x 1/4"	0.0371	50	500
W 40350	3/8" x 3/8" x 1/8"	0.0422	50	500
W 04003	3/8" x 1/4" x 3/8"	0.0477	50	500
W 04004	3/8" x 1/4" x 1/4"	0.0426	50	500
W 40358	3/8" x 1/4" x 1/8"	0.0413	50	750
W 40363	3/8" x 1/8" x 3/8"	0.0522	50	750
W 40364	3/8" x 1/8" x 1/4"	0.0419	50	750
W 40366	3/8" x 1/8" x 1/8"	0.0462	50	450
W 04067	1/2" x 1/2" x 1"	0.3545	10	100
W 04047	1/2" x 1/2" x 3/4"	0.1060	25	250
W 04029	1/2" x 1/2" x 5/8"	0.0982	25	250
W 04007	1/2" x 1/2" x 3/8"	0.0779	50	500
W 04008	1/2" x 1/2" x 1/4"	0.0618	50	500
W 04014	1/2" x 1/2" x 1/8"	0.0833	50	500
W 04009	1/2" x 3/8" x 1/2"	0.0863	50	500
W 04010	1/2" x 3/8" x 3/8"	0.0787	50	500
W 04011	1/2" x 3/8" x 1/4"	0.0848	50	500
W 04012	1/2" x 1/4" x 1/2"	0.0894	50	500
W 40367	1/2" x 1/4" x 3/8"	0.0819	50	500
W 04013	1/2" x 1/4" x 1/4"	0.0882	50	500
W 04046	5/8" x 5/8" x 3/4"	0.1473	25	250
W 04018	5/8" x 5/8" x 1/2"	0.1014	25	250

(CONTINUED NEXT COLUMN)

(CONTINUED FROM PREVIOUS COLUMN)

Item No.	Diameter	Each Wt.	Inner Qty.	Master Carton
W 04019	5/8" x 5/8" x 3/8"	0.1003	25	250
W 04020	5/8" x 5/8" x 1/4"	0.1036	25	250
W 04021	5/8" x 1/2" x 5/8"	0.1271	25	225
W 04022	5/8" x 1/2" x 1/2"	0.1085	25	250
W 04023	5/8" x 1/2" x 3/8"	0.1071	25	225
W 04025	5/8" x 3/8" x 5/8"	0.1501	25	250
W 04026	5/8" x 3/8" x 1/2"	0.1440	25	225
W 04027	5/8" x 3/8" x 3/8"	0.1069	25	250
W 04065	3/4" x 3/4" x 1"	0.2200	10	100
W 04032	3/4" x 3/4" x 5/8"	0.1678	25	250
WB04033	3/4" x 3/4" x 1/2"	0.1220	25	250
W 04034	3/4" x 3/4" x 3/8"	0.1114	25	250
W 04035	3/4" x 3/4" x 1/4"	0.1080	25	250
W 04036	3/4" x 5/8" x 3/4"	0.1870	25	250
W 04037	3/4" x 5/8" x 5/8"	0.1659	25	250
WB04041	3/4" x 1/2" x 3/4"	0.1550	25	250
W 04042	3/4" x 1/2" x 5/8"	0.1707	25	150
WB04043	3/4" x 1/2" x 1/2"	0.1300	25	250
W 04044	3/4" x 1/2" x 3/8"	0.1210	25	250
W 04045	3/4" x 1/2" x 1/4"	0.1503	25	225
W 40230	3/4" x 3/8" x 3/4"	0.1900	25	250
W 40231	3/4" x 3/8" x 1/2"	0.1650	25	250
W 40232	3/4" x 3/8" x 3/8"	0.1210	25	250
W 40101	1" x 1" x 1-1/2"	0.4707	5	50
W 04082	1" x 1" x 1-1/4"	0.3140	5	50
WB04049	1" x 1" x 3/4"	0.2415	10	100
W 04050	1" x 1" x 5/8"	0.2706	10	100
WB04051	1" x 1" x 1/2"	0.2055	10	100
W 04052	1" x 1" x 3/8"	0.1877	10	100
W 04055	1" x 3/4" x 1"	0.2970	10	100
W 04056	1" x 3/4" x 3/4"	0.2532	10	100
W 04057	1" x 3/4" x 5/8"	0.4317	10	90
W 04058	1" x 3/4" x 1/2"	0.2324	10	100
W 04059	1" x 3/4" x 3/8"	0.2090	10	100
W 40233	1" x 5/8" x 1"	0.3255	10	100
W 40234	1" x 5/8" x 3/4"	0.3010	10	90
W 40235	1" x 5/8" x 5/8"	0.3091	10	100
W 40236	1" x 5/8" x 1/2"	0.3455	10	90
W 04061	1" x 1/2" x 1"	0.2982	10	100
W 04062	1" x 1/2" x 3/4"	0.2760	10	100
W 04063	1" x 1/2" x 1/2"	0.2146	10	100
W 40122	1-1/4" x 1-1/4" x 2"	0.8940	2	20
W 40100	1-1/4" x 1-1/4" x 1-1/2"	0.4873	5	50
W 04069	1-1/4" x 1-1/4" x 1"	0.4063	5	50
W 04070	1-1/4" x 1-1/4" x 3/4"	0.3540	5	50
W 04072	1-1/4" x 1-1/4" x 3/8"	0.2863	5	50
W 04073	1-1/4" x 1" x 1-1/4"	0.4779	5	50
W 04074	1-1/4" x 1" x 1"	0.4580	5	50
W 04075	1-1/4" x 1" x 3/4"	0.3805	5	50
W 04076	1-1/4" x 1" x 1/2"	0.3560	5	50
W 04078	1-1/4" x 3/4" x 1-1/4"	0.4540	5	50
W 04079	1-1/4" x 3/4" x 1"	0.4553	5	50
W 04080	1-1/4" x 3/4" x 3/4"	0.3687	5	50
W 04081	1-1/4" x 3/4" x 1/2"	0.3380	5	50
W 04083	1-1/4" x 1/2" x 1-1/4"	0.5739	5	50
A 01610*	1-1/4" x 1/2" x 1"	0.4830	5	50
W 40121	1-1/2" x 1-1/2" x 2"	1.2090	2	20
W 04085	1-1/2" x 1-1/2" x 1-1/4"	0.5670	5	50
W 04086	1-1/2" x 1-1/2" x 1"	0.5200	5	50
W 04087	1-1/2" x 1-1/2" x 3/4"	0.4717	5	50
W 04088	1-1/2" x 1-1/2" x 1/2"	0.4210	5	50
W 04089	1-1/2" x 1-1/2" x 3/8"	0.4140	5	50
W 04090	1-1/2" x 1-1/4" x 1-1/2"	0.6790	5	50

(CONTINUED NEXT PAGE)

COPPER FITTINGS | COPPER PRESSURE FITTINGS



Tee • Reducing (CONTINUED)

C x C x C

Wrot Style #: WT-600

Cast Style #: T-300*



** Applies to Wrot Fittings only

Item No.	Diameter	Each Wt.	Inner Qty.	Master Carton
W 04091	1-1/2" x 1-1/4" x 1-1/4"	0.6880	5	50
W 04092	1-1/2" x 1-1/4" x 1"	0.5698	5	50
W 04093	1-1/2" x 1-1/4" x 3/4"	0.5660	5	50
W 04094	1-1/2" x 1-1/4" x 1/2"	0.4520	5	50
W 04095	1-1/2" x 1" x 1-1/2"	0.6760	5	50
W 04096	1-1/2" x 1" x 1-1/4"	0.6482	5	50
W 04097	1-1/2" x 1" x 1"	0.6114	5	50
W 04098	1-1/2" x 1" x 3/4"	0.5570	5	50
W 40237	1-1/2" x 1" x 1/2"	0.4540	5	30
W 04099	1-1/2" x 3/4" x 1-1/2"	0.6661	5	50
W 40239	1-1/2" x 3/4" x 1-1/4"	0.7522	5	50
W 40240	1-1/2" x 3/4" x 1"	0.5232	5	50
W 40238	1-1/2" x 3/4" x 3/4"	0.5540	5	50
W 40243	1-1/2" x 3/4" x 1/2"	0.4660	5	50
W 40244	1-1/2" x 3/4" x 1-1/2"	0.6630	5	50
W 40153	2" x 2" x 3"	2.5537	1	10
W 40144	2" x 2" x 2-1/2"	1.4586	1	10
W 40103	2" x 2" x 1-1/2"	0.9930	5	50
W 40104	2" x 2" x 1-1/4"	0.8510	5	50
W 40105	2" x 2" x 1"	0.8810	5	50
W 40106	2" x 2" x 3/4"	0.8317	5	50
W 40107	2" x 2" x 1/2"	0.6677	5	50
W 40109	2" x 1-1/2" x 2"	1.3140	2	20
W 40110	2" x 1-1/2" x 1-1/2"	1.1470	2	20
W 40111	2" x 1-1/2" x 1-1/4"	0.8647	2	20
W 40112	2" x 1-1/2" x 1"	1.0590	2	20
W 40113	2" x 1-1/2" x 3/4"	0.7535	2	20
W 40114	2" x 1-1/2" x 1/2"	0.7690	5	50
W 40115	2" x 1-1/4" x 2"	1.2956	2	20
W 40116	2" x 1-1/4" x 1-1/2"	1.1375	2	20
W 40117	2" x 1-1/4" x 1-1/4"	1.0900	2	20
W 40118	2" x 1-1/4" x 1"	0.9460	2	20
W 40119	2" x 1-1/4" x 3/4"	0.7606	5	50
W 40120	2" x 1-1/4" x 1/2"	0.7820	5	20
W 40245	2" x 1" x 2"	1.6369	5	25
W 40247	2" x 1" x 1"	1.0570	5	50
W 40248	2" x 3/4" x 2"	1.7076	5	25
W 40249	2" x 1/2" x 2"	1.6561	5	25
A 01812*	2-1/2" x 2-1/2" x 3"	2.9810	1	15
W 40124	2-1/2" x 2-1/2" x 2"	1.5930	2	20
W 40125	2-1/2" x 2-1/2" x 1-1/2"	1.4930	2	20
W 40126	2-1/2" x 2-1/2" x 1-1/4"	1.8741	2	20
W 40127	2-1/2" x 2-1/2" x 1"	1.8320	2	20
W 40128	2-1/2" x 2-1/2" x 3/4"	1.8270	1	10
W 40129	2-1/2" x 2-1/2" x 1/2"	2.0475	1	10
W 40130	2-1/2" x 2" x 2-1/2"	2.3007	4	20
W 40131	2-1/2" x 2" x 2"	1.8369	2	20
W 40132	2-1/2" x 2" x 1-1/2"	2.0884	4	20
W 40133	2-1/2" x 2" x 1-1/4"	2.1160	4	20
W 40134	2-1/2" x 2" x 1"	2.1000	4	20
W 40135	2-1/2" x 2" x 3/4"	2.0591	4	20
W 40136	2-1/2" x 2" x 1/2"	2.1980	4	20
W 40137	2-1/2" x 1-1/2" x 2-1/2"	2.3185	4	20
W 40138	2-1/2" x 1-1/2" x 2"	1.8438	4	20
W 40139	2-1/2" x 1-1/2" x 1-1/2"	2.1127	4	20
W 40140	2-1/2" x 1-1/2" x 1-1/4"	2.1682	4	20
W 40141	2-1/2" x 1-1/2" x 1"	1.8333	4	20
W 40142	2-1/2" x 1-1/2" x 3/4"	2.3573	4	20
W 40143	2-1/2" x 1-1/2" x 1/2"	2.3573	4	20

(CONTINUED NEXT COLUMN)

(CONTINUED FROM PREVIOUS COLUMN)

Item No.	Diameter	Each Wt.	Inner Qty.	Master Carton
W 40220	2-1/2" x 1-1/4" x 2-1/2"	2.3457	4	20
W 40250	2-1/2" x 1-1/4" x 2"	1.8214	4	20
W 40251	2-1/2" x 1-1/4" x 1-1/2"	2.4695	4	20
W 40252	2-1/2" x 1-1/4" x 1-1/4"	1.9615	4	20
W 40253	2-1/2" x 1-1/4" x 1"	2.4695	4	20
W 40254	2-1/2" x 1-1/4" x 3/4"	2.1793	4	20
W 40255	2-1/2" x 1-1/4" x 1/2"	2.4695	4	20
W 40221	2-1/2" x 1" x 2-1/2"	2.3949	4	20
W 40256	2-1/2" x 1" x 2"	1.9737	4	20
W 40257	2-1/2" x 1" x 1-1/2"	2.1539	4	20
W 40258	2-1/2" x 1" x 1-1/4"	2.0444	4	20
W 40259	2-1/2" x 1" x 1"	2.2655	4	20
W 40222	2-1/2" x 3/4" x 2-1/2"	2.4105	4	20
A 01902*	3" x 3" x 4"	6.9600	1	5
W 40151	3" x 3" x 2-1/2"	2.4451	2	10
W 40150	3" x 3" x 2"	2.2991	2	20
W 40149	3" x 3" x 1-1/2"	2.1760	2	10
W 40148	3" x 3" x 1-1/4"	2.3822	2	10
W 40147	3" x 3" x 1"	1.9647	2	20
W 40146	3" x 3" x 3/4"	1.4850	2	20
W 40145	3" x 3" x 1/2"	1.3780	2	20
W 40159	3" x 2-1/2" x 3"	2.9624	2	10
W 40158	3" x 2-1/2" x 2-1/2"	4.5160	2	10
W 40157	3" x 2-1/2" x 2"	2.6830	2	10
W 40156	3" x 2-1/2" x 1-1/2"	2.6252	2	10
W 40155	3" x 2-1/2" x 1-1/4"	2.6179	2	10
W 40154	3" x 2-1/2" x 1"	2.0165	2	20
W 40167	3" x 2" x 3"	3.0684	2	10
W 40165	3" x 2" x 2-1/2"	4.6424	2	10
W 40164	3" x 2" x 2"	2.7490	2	10
W 40163	3" x 2" x 1-1/2"	2.5732	2	10
W 40162	3" x 2" x 1-1/4"	2.6110	2	10
W 40161	3" x 2" x 1"	2.0430	2	20
W 40174	3" x 1-1/2" x 3"	2.9748	2	10
W 40181	3" x 1-1/4" x 3"	3.1416	2	10
W 40178	3" x 1" x 3"	3.0152	2	10
W 40179	3" x 3/4" x 3"	3.0287	2	10
W 40198	4" x 4" x 3"	4.9370	1	5
W 40197	4" x 4" x 2-1/2"	5.1562	1	5
W 40196	4" x 4" x 2"	4.5180	1	10
W 40195	4" x 4" x 1-1/2"	4.1000	1	10
W 40194	4" x 4" x 1-1/4"	4.5531	1	10
W 40193	4" x 4" x 1"	3.0540	1	10
W 40192	4" x 4" x 3/4"	2.8900	1	10
W 40191	4" x 4" x 1/2"	2.8880	1	10
W 40208	4" x 3" x 4"	8.6632	1	5
W 40206	4" x 3" x 3"	5.1180	1	5
W 40205	4" x 3" x 2-1/2"	5.6143	1	5
W 40204	4" x 3" x 2"	4.7578	1	5
W 40212	4" x 2-1/2" x 4"	7.7912	1	5
W 40216	4" x 2" x 4"	8.9477	1	5
W 40215	4" x 1-1/2" x 4"	8.5082	1	5
W 40214	4" x 1-1/4" x 4"	8.5658	1	5
W 40213	4" x 1" x 4"	9.3333	1	5
W 40401	5" x 5" x 4"	6.9500	1	1
W 40402	5" x 5" x 3"	6.2500	1	1
W 40404	5" x 5" x 2"	5.0500	1	1
W 40520	6" x 4" x 4"	12.5200	1	1
W 40502	6" x 6" x 4"	11.0000	1	1
W 40503	6" x 6" x 3"	10.9998	1	1
W 40504	6" x 6" x 2-1/2"	11.1046	1	1
W 40505	6" x 6" x 2"	9.5356	1	1
W 40526	8" x 8" x 4"	22.2640	1	1

*Cast Bronze



Tee

C x C x FPT
Cast Style #: T-302*

Item No.	Diameter	Each Wt.	Inner Qty.	Master Carton
A 01399*	3/8"	0.1050	50	480
A 01512*	1/2"	0.1250	25	250
A 01538*	3/4"	0.3250	10	100
A 01569*	1"	0.5420	5	50
A 01607*	1-1/4"	0.7560	5	50
A 01644*	1-1/2"	1.0800	1	25
A 01698*	2"	1.7400	1	25
A 02517*	1/2" x 1/2" x 3/4"	0.2180	25	250
A 01521*	1/2" x 1/2" x 3/8"	0.1470	25	250
A 01539*	3/4" x 3/4" x 1/2"	0.2170	25	250
A 02578*	3/4" x 3/4" x 3/8"	0.2300	25	250
A 02907*	3/4" x 1/2" x 3/4"	0.2800	25	100
A 01572*	1" x 1" x 3/4"	0.4220	10	100
A 01570*	1" x 1" x 1/2"	0.3470	10	100
A 02655*	1-1/4" x 1-1/4" x 1"	0.6600	5	50
A 02654*	1-1/4" x 1-1/4" x 3/4"	0.5510	10	100
A 01613*	1-1/4" x 1-1/4" x 1/2"	0.3960	10	100
A 02688*	1-1/2" x 1-1/2" x 1"	0.7920	5	50
A 02673*	1-1/2" x 1-1/2" x 3/4"	0.6480	5	50
A 01645*	1-1/2" x 1-1/2" x 1/2"	0.6200	5	50
A 02703*	2" x 2" x 1"	1.2280	1	25
A 02706*	2" x 2" x 3/4"	1.1000	1	25
A 01699*	2" x 2" x 1/2"	0.9720	1	25



Tee

FPT x MPT x C
Cast Style #: T-305*

Item No.	Diameter	Each Wt.	Inner Qty.	Master Carton
A 03655*	3/4"	0.3400	10	100
A 03656*	3/4" x 3/4" x 1/2"	0.3280	10	100



Tee

C x FPT x C
Cast Style #: T-303*

Item No.	Diameter	Each Wt.	Inner Qty.	Master Carton
A 02516*	1/2"	0.1900	25	250
A 01548*	3/4"	0.3100	10	100
A 01577*	1"	0.5200	10	50
A 01621*	1-1/4"	0.7000	5	50
A 01646*	1-1/2"	1.0000	1	25
A 01712*	2"	1.7200	1	25
A 02151*	1/2" x 3/4" x 1/2"	0.2700	25	125
A 02587*	3/4" x 1/2" x 3/4"	0.2550	25	250
A 02624*	1" x 3/4" x 1"	0.4600	10	100
A 04053*	1" x 1/2" x 1"	0.4120	10	100



Tee • Baseboard

C x FPT x C
Cast Style #: T-301*

Item No.	Diameter	Each Wt.	Inner Qty.	Master Carton
A 07750*	1/2" x 1/8" x 1/2"	0.1040	50	500
A 07757*	3/4" x 1/8" x 1"	0.2900	10	100
A 07751*	3/4" x 1/8" x 3/4"	0.1960	25	250
A 07754*	1" x 1/8" x 1"	0.3110	10	100
A 07775*	1-1/4" x 1/8" x 1-1/4"	0.5140	10	80



Tee • Drop

C x C x C
Cast Style #: T-310*

Item No.	Diameter	Each Wt.	Inner Qty.	Master Carton
A 02515*	1/2"	0.1500	25	250



Tee • Drop

C x C x FPT
Cast Style #: T-311*

Item No.	Diameter	Each Wt.	Inner Qty.	Master Carton
A 01513*	1/2"	0.2400	25	250
A 01549*	3/4"	0.3770	10	100



Tee

FPT x FPT x C
Cast Style #: T-304*

Item No.	Diameter	Each Wt.	Inner Qty.	Master Carton
A 01502*	1/2"	0.2200	25	150
A 04117*	3/4"	0.3700	10	100
A 03711*	3/4" x 3/4" x 1/2"	0.3100	10	200
A 04109*	3/4" x 1/2" x 3/4"	0.3100	10	100
A 09692*	3/4" x 1/2" x 1/2"	0.2570	10	200



Tee

C x FTG x C
Wrot Style #: WT-600F



Item No.	Diameter	Each Wt.	Inner Qty.	Master Carton
W 04106	1/2"	0.0998	50	300
W 04131	3/4"	0.1940	25	150

COPPER FITTINGS | COPPER PRESSURE FITTINGS



Tee • Supply & Return

C x C x C
Cast Style #: T-300RB*

Item No.	Diameter	Each Wt.	Inner Qty.	Master Carton
A 03623*	1/2"	0.1670	25	250



45° Wye

C x C x C
Cast Style #: T-317*

Item No.	Diameter	Each Wt.	Inner Qty.	Master Carton
A 03726*	1/2"	0.1500	10	100
A 04119*	3/4"	0.3020	10	100
A 04216*	1"	0.5500	5	50



Union

C x MPT
Cast Style #: C-108*

Item No.	Diameter	Each Wt.	Inner Qty.	Master Carton
A 11209*	3/8"	0.1970	10	100
A 11210*	1/2"	0.2770	25	125
A 11211*	3/4"	0.4270	10	100
A 11212*	1"	0.6780	10	100
A 11213*	1-1/4"	0.9540	5	50
A 11214*	1-1/2"	1.3470	1	50
A 11215*	2"	2.1710	1	25
A 11240*	2-1/2"	4.1250	1	10



Union

C x C
Wrot Style #: WC-407
Cast Style #: C-107*



** Applies to Wrot Fittings only

Item No.	Diameter	Each Wt.	Inner Qty.	Master Carton
W 08001	1/4"	0.1160	10	200
W 08002	3/8"	0.1141	50	250
W 08003	1/2"	0.1583	25	250
W 08004	3/4"	0.3672	25	150
W 08005	1"	0.5162	10	100
A 11205*	1-1/4"	0.7640	1	25
A 11206*	1-1/2"	1.0420	1	25
A 11207*	2"	1.7700	1	25
A 11216*	2-1/2"	3.2500	1	20
A 11217*	3"	4.7500	1	10



Union

C x FPT
Cast Style #: C-109*

Item No.	Diameter	Each Wt.	Inner Qty.	Master Carton
A 11421*	3/8"	0.1900	10	200
A 11422*	1/2"	0.2560	25	125
A 11423*	3/4"	0.3710	25	150
A 11424*	1"	0.6090	10	100
A 11425*	1-1/4"	0.9820	5	50
A 11426*	1-1/2"	1.2120	1	50
A 11427*	2"	1.8950	1	25



25 Ft. Roll Copper Tube Strap Perforated

C
Wrot Style #: WS-1101



Each Wt.	Item No.	Inner Qty.	Master Carton
A 01211	1.6290	1	10



Copper Tube Strap • Two-Hole

C
Wrot Style #: WS-1100



Item No.	Diameter	Each Wt.	Inner Qty.	Master Carton
A 01203	1/8"	0.0050	100	4000
A 01278	1/4"	0.0063	100	5600
A 01366	3/8"	0.0071	100	3400
A 02529	1/2"	0.0083	100	1500
A 01467	5/8"	0.0102	100	2000
A 02574	3/4"	0.0125	50	750
A 02614	1"	0.0233	50	750
A 02650	1-1/4"	0.0423	50	500
A 02675	1-1/2"	0.0512	50	500
A 02708	2"	0.0607	50	500



Hanger High Ear

C
Wrot Style #: W-124



Item No.	Diameter	Each Wt.	Inner Qty.	Master Carton
A 03167	1/2"	0.0294	100	1000
A 03168	3/4"	0.0375	50	500
A 03171	1"	0.0425	25	250

COPPER SOLDER-JOINT DWV FITTINGS



Streamline® Copper Solder-Joint Fittings for DWV plumbing applications are available in both wrot copper and cast bronze materials. Designed for use in non-pressurized sanitary systems, these fittings commonly feature shorter solder cup designs and more sweeping turns. They are available in a wide range of diameters, styles and connections to meet most all sanitary system applications.



** Applies to Wrot fittings only.

- For use in non-pressurized drain, waste and vent sanitary systems
- Constructed of high-grade copper or bronze materials
- Made to applicable ASME standards B16.23, B16.29
- Wrot fittings meet NSF 61G



Adapter • Soil Pipe

C x Spigot
Wrot Style #: DW-733
Cast Style #: D-733*



** Applies to Wrot Fittings only

Item No.	Diameter	Each Wt.	Inner Qty.	Master Carton
W 07122	2"	0.4267	5	100
W 07133	3"	1.1150	5	40
A 07220*	4"	2.2290	1	15
A 07016*	1-1/4" x 2"	0.9320	1	50
W 07112	1-1/2" x 2"	0.6070	5	50
A 07322*	2" x 4"	2.3060	1	10
A 07169*	3" x 4"	2.7750	1	20



Adapter • Soil Pipe

C x No Hub
Cast Style #: D-736N*

Item No.	Diameter	Each Wt.	Inner Qty.	Master Carton
A 07486*	2"	0.3960	1	50
A 07488*	3"	0.7500	1	50
A 07485*	1-1/2" x 2"	0.4270	1	50



Adapter • Trap

FTG x SJ
Wrot Style #: DW-724F
Cast Style #: D-724F*



** Applies to Wrot Fittings only

Item No.	Diameter	Each Wt.	Inner Qty.	Master Carton
A 11563*	1-1/4"	0.2540	10	100
A 11564	1-1/2"	0.2800	1	10
A 11566	1-1/2" x 1-1/4"	0.2580	10	100



Adapter • Trap

C x SJ
Wrot Style #: DW-724



Item No.	Diameter	Each Wt.	Inner Qty.	Master Carton
A 11355	1-1/4"	0.2200	1	25
A 11356	1-1/2"	0.3280	1	10
A 11383	1-1/2" x 1-1/4"	0.3958	1	10

COPPER FITTINGS | COPPER DWV FITTINGS



Adapter • Trap
FPT x SJ
Wrot Style #: DW-757



Item No.	Diameter	Each Wt.	Inner Qty.	Master Carton
A 11409	1-1/4"	0.3400	10	100
A 11410	1-1/2"	0.4000	10	100
A 11411	1-1/2" x 1-1/4"	0.4000	10	100



Adapter • Slip Joint
C x SJ THD
Cast Style #: D-729*

Item No.	Diameter	Each Wt.	Inner Qty.	Master Carton
W 07050*	1-1/4"	0.0500	50	500
W 07051*	1-1/2"	0.0540	50	500
W 07052*	2"	0.0640	25	250



Adapter • Trap
MPT x SJ
Wrot Style #: DW-756



Item No.	Diameter	Each Wt.	Inner Qty.	Master Carton
A 11405	1-1/4"	0.4200	10	100
A 11406	1-1/2"	0.5200	1	10
A 11407	1/2" x 1-1/4"	0.5300	10	100



Adapter • Female
C x FPT
Wrot Style #: DW-753
Cast Style #: D-753*



** Applies to Wrot Fittings only

Item No.	Diameter	Each Wt.	Inner Qty.	Master Carton
W 07221	1-1/2"	0.2530	10	100
W 07222	2"	0.4080	10	100
A 07403*	3"	1.4500	1	25
A 07340*	4"	2.3100	1	20



Adapter • Trap
C x O.D. Tube
Cast Style #: D-738*

Item No.	Diameter	Each Wt.	Inner Qty.	Master Carton
A 07251*	1-1/4"	0.2100	25	250
A 07252*	1-1/2"	0.2390	10	100
A 07253*	1-1/2" x 1-1/4"	0.1950	10	100



Adapter • Male
C x MPT
Wrot Style #: DW-732
Cast Style #: D-732*



** Applies to Wrot Fittings only

Item No.	Diameter	Each Wt.	Inner Qty.	Master Carton
A 07012	1-1/4"	0.3527	25	250
A 07054	1-1/2"	0.4354	10	100
A 07094	2"	0.5150	10	100
A 07234*	3"	1.2940	1	25
A 07339*	4"	2.5880	1	20
W 07235	1-1/4" x 1-1/2"	0.3710	10	100
A 07233*	1-1/2" x 1-1/4"	0.3090	10	100



Adapter • Trap
C x MPT
Cast Style #: D-732F*

Item No.	Diameter	Each Wt.	Inner Qty.	Master Carton
A 07230*	1-1/4"	0.2200	25	150
A 07231*	1-1/2"	0.2540	25	150
A 07232*	2"	0.3290	10	100
A 07264*	3"	0.7700	1	50
A 07263*	1-1/4" x 1-1/2"	0.4380	10	100



Adapter • Fitting
FTG x FPT
Wrot Style #: DW-754
Cast Style #: D-754*



** Applies to Wrot Fittings only

Item No.	Diameter	Each Wt.	Inner Qty.	Master Carton
W 07240	1-1/4"	0.1900	10	100
A 07436*	1-1/2"	0.3910	10	100
A 07481*	2"	0.5530	10	100
A 07482*	3"	1.4390	1	25



Adapter • Trap (Flush)
C x MPT
Cast Style #: D-732C*

Item No.	Diameter	Each Wt.	Inner Qty.	Master Carton
A 07645*	1-1/2"	0.1880	25	150
A 07646*	2"	0.2540	10	100

*Cast Bronze



Bushing • Extended

FTG x C
Wrot Style #: DW-742



Item No.	Diameter	Each Wt.	Inner Qty.	Master Carton
W 07350	1-1/2" x 1-1/4"	0.1127	25	250
W 07358	2" x 1-1/2"	0.2193	1	100
W 07359	2" x 1-1/4"	0.1782	1	100
W 07377	3" x 2"	0.4742	1	50
W 07378	3" x 1-1/2"	0.4448	1	50
W 07379	3" x 1-1/4"	0.5029	1	50
W 07387	4" x 3"	0.8873	1	25
W 07389	4" x 2"	1.0289	1	25



Flange • Closet

C x Closet
Wrot Style #: DW-734



Item No.	Diameter	Each Wt.	Inner Qty.	Master Carton
W 07834	3" x 4"	0.8260	5	50
W 07844	4" x 4"	0.6666	5	40



Bushing • Flush

FTG x C
Wrot Style #: DW-742F



Item No.	Diameter	Each Wt.	Inner Qty.	Master Carton
A 07334	2" x 1-1/2"	0.3700	10	100



Coupling

C x C
Wrot Style #: DW-741



Item No.	Diameter	Each Wt.	Inner Qty.	Master Carton
W 07055	1-1/4"	0.0854	25	150
W 07063	1-1/2"	0.1143	25	250
W 07072	2"	0.1306	1	100
W 07092	3"	0.4677	1	50
W 70107	4"	1.0337	1	25
W 07073	2" x 1-1/2"	0.1676	1	100
W 07074	2" x 1-1/4"	0.1770	1	100
W 07094	3" x 2"	0.5228	1	50
W 07095	3" x 1-1/2"	0.5184	1	50
W 07096	3" x 1-1/4"	0.6958	1	50
W 70109	4" x 3"	0.9252	1	25
W 70106	4" x 2"	1.3793	1	25



Cleanout • w/Plug

FTG x C.O.
Cast Style #: D-730*

Item No.	Diameter	Each Wt.	Inner Qty.	Master Carton
A 11350*	1-1/4"	0.4900	10	100
A 11351*	1-1/2"	0.6010	1	100
A 11352*	2"	0.8710	1	50
A 11353*	3"	2.3680	1	25
A 11354*	4"	3.9900	1	10



Coupling • Repair

C x C
Wrot Style #: DW-741NS



Item No.	Diameter	Each Wt.	Inner Qty.	Master Carton
W 07907	1-1/4"	0.0720	25	225
W 07908	1-1/2"	0.1146	25	250
W 07909	2"	0.1896	1	75
W 07911	3"	0.3427	1	50



Cleanout • Flush w/Plug

FTG x C.O.
Cast Style #: D-730F*

Item No.	Diameter	Each Wt.	Inner Qty.	Master Carton
A 11551*	1-1/4"	0.2000	10	100
A 11552*	1-1/2"	0.2900	15	150
A 11553*	2"	0.4160	10	100
A 11554*	3"	0.9560	5	50



11-1/4° Elbow

C x C
Cast Style #: D-704*

Item No.	Diameter	Each Wt.	Inner Qty.	Master Carton
A 07063*	1-1/2"	0.2180	10	100
A 07103*	2"	0.4020	5	50

COPPER FITTINGS | COPPER DWV FITTINGS



22-1/2° Elbow

C x C
Wrot Style #: DW-703
Cast Style #: D-703*



** Applies to Wrot Fittings only

Item No.	Diameter	Each Wt.	Inner Qty.	Master Carton
A 07011*	1-1/4"	0.1930	25	200
W 07060	1-1/2"	0.2650	10	100
A 07098	2"	0.4610	1	50
A 07157	3"	0.9860	1	25



45° Elbow

C x C
Wrot Style #: DW-204
Cast Style #: D-702*



** Applies to Wrot Fittings only

Item No.	Diameter	Each Wt.	Inner Qty.	Master Carton
W 07420	1-1/4"	0.1367	25	250
W 07421	1-1/2"	0.2030	25	125
W 07422	2"	0.3340	1	50
W 07423	3"	0.8421	1	25
A 07304*	4"	2.4700	1	10



45° Elbow • Street

FTG x C
Wrot Style #: DW-205
Cast Style #: D-702*



** Applies to Wrot Fittings only

Item No.	Diameter	Each Wt.	Inner Qty.	Master Carton
W 07430	1-1/4"	0.1675	25	250
W 07431	1-1/2"	0.1954	25	125
W 07432	2"	0.3240	0	50
W 07433	3"	0.8148	1	25
A 07124*	4"	2.8120	1	10



60° Elbow

C x C
Wrot Style #: DW-701



Item No.	Diameter	Each Wt.	Inner Qty.	Master Carton
W 07064	1-1/2"	0.3520	25	125
W 07066	3"	0.9500	2	20



90° Elbow

C x C
Wrot Style #: DW-200
Cast Style #: D-700*



** Applies to Wrot Fittings only

Item No.	Diameter	Each Wt.	Inner Qty.	Master Carton
W 07400	1-1/4"	0.2548	25	125
W 07401	1-1/2"	0.2384	20	100
W 07403	2"	0.7052	1	50
W 07404	3"	1.6575	1	15
A 07215*	4"	3.7570	1	10
A 07056*	1-1/2" x 1-1/4"	0.4300	10	100
A 07210*	2" x 1-1/2"	0.6400	1	50



90° Elbow • Long Radius

C x C
Wrot Style #: DW-700LT



Item No.	Diameter	Each Wt.	Inner Qty.	Master Carton
A 07209	1-1/2"	0.4120	5	100
A 07202	2"	0.6200	1	5



90° Elbow • Extra Long Radius

C x C
Wrot Style #: DW-700XLT



Item No.	Diameter	Each Wt.	Inner Qty.	Master Carton
W 07451	1-1/2"	0.5534	10	50
W 07452	2"	1.1106	5	25
W 07453	3"	2.2801	2	10
W 07454	4"	5.0976	1	5



90° Elbow

C x MPT
Cast Style #: D-722*

Item No.	Diameter	Each Wt.	Inner Qty.	Master Carton
A 07326*	1-1/2"	0.6630	1	50



90° Elbow

C x FPT
Cast Style #: D-705*

Item No.	Diameter	Each Wt.	Inner Qty.	Master Carton
A 07059*	1-1/4"	0.7150	10	100
A 07097*	2"	1.1500	1	25

*Cast Bronze



90° Elbow • w/Low Heel Inlet

C x C x C
Cast Style #: D-737*

Item No.	Diameter	Each Wt.	Inner Qty.	Master Carton
A 07330*	3" x 3" x 2"	2.4250	1	10



90° Elbow • Street

FTG x C
Wrot Style #: DW-203
Cast Style #: D-700*



** Applies to Wrot Fittings only

Item No.	Diameter	Each Wt.	Inner Qty.	Master Carton
W 07410	1-1/4"	0.2631	25	125
W 07411	1-1/2"	0.3834	20	100
W 07412	2"	0.7000	1	50
W 07413	3"	1.7025	1	15
A 07119*	4"	3.8350	1	10



90° Elbow • Double

C x C x C
Cast Style #: D-706*

Item No.	Diameter	Each Wt.	Inner Qty.	Master Carton
A 07443*	1-1/2"	0.7270	1	50
A 07444*	2"	1.3080	1	25
A 07446*	2" x 1-1/2" x 1-1/2"	0.9670	1	50



Plug • Male

MPT
Cast Style #: D-745*

Item No.	Diameter	Each Wt.	Inner Qty.	Master Carton
A 07679*	3/4"	0.0760	100	1000
A 07437	1-1/2"	0.2200	25	250
A 07222*	2"	0.3300	10	100



Tee

C x C x C
Wrot Style #: DW-707
Cast Style #: D-707*



** Applies to Wrot Fittings only

Item No.	Diameter	Each Wt.	Inner Qty.	Master Carton
W 07500	1-1/4"	0.3683	20	100
W 07511	1-1/2"	0.5180	20	100
W 07522	2"	0.8510	5	25
W 07533	3"	2.0971	1	10
A 07208*	4"	4.9210	1	5



Tee • Reducing

C x C x C
Wrot Style #: DW-707
Cast Style #: D-707*



** Applies to Wrot Fittings only

Item No.	Diameter	Each Wt.	Inner Qty.	Master Carton
W 07510	1-1/2" x 1-1/2" x 1-1/4"	0.5089	10	100
W 07512	1-1/2" x 1-1/4" x 1-1/4"	0.5196	10	100
W 07521	2" x 2" x 1-1/2"	0.7530	5	50
W 07520	2" x 2" x 1-1/4"	0.6839	5	30
W 07524	2" x 1-1/2" x 1-1/2"	0.8741	5	50
W 07532	3" x 3" x 2"	1.6878	5	25
W 07531	3" x 3" x 1-1/2"	1.4542	5	25
W 07530	3" x 3" x 1-1/4"	0.8095	5	25
A 07308*	4" x 4" x 3"	3.4880	1	10
A 07309*	4" x 4" x 2"	2.7350	1	15



Tee

C x C x FPT
Cast Style #: D-708*

Item No.	Diameter	Each Wt.	Inner Qty.	Master Carton
A 07046*	1-1/2"	0.8780	1	50
A 07100*	2"	1.5700	1	25
A 07101*	2" x 2" x 1-1/2"	1.1670	1	25



Tee • Double (Cross)

C x C x C x C
Cast Style #: D-718*

Item No.	Diameter	Each Wt.	Inner Qty.	Master Carton
A 07065*	1-1/2"	0.7750	1	50
A 07105*	2"	1.3100	1	25
A 07066*	1-1/2" x 1-1/2" x 1-1/4" x 1-1/4"	0.6800	1	50
A 07106*	2" x 2" x 1-1/2" x 1-1/2"	0.9780	1	25
A 07171*	3" x 3" x 2" x 2"	2.3550	1	15
A 07320*	3" x 3" x 1-1/2" x 1-1/2"	1.5130	1	25



Tee • Test w/Plug

C x C x C.O
Cast Style #: D-714*

Item No.	Diameter	Each Wt.	Inner Qty.	Master Carton
A 11360*	1-1/2"	1.0000	1	50
A 11366*	2"	1.3540	1	25
A 11367*	3"	3.7770	1	10

COPPER FITTINGS | COPPER DWV FITTINGS



Test Cap

C
Wrot Style #: DW-798T



Item No.	Diameter	Each Wt.	Inner Qty.	Master Carton
W 07634	1/2"	0.0025	500	3000
W 07635	3/4"	0.0041	100	600
W 07636	1"	0.0059	100	600
W 07637	1-1/4"	0.0080	100	600
W 07638	1-1/2"	0.0107	100	600
W 07639	2"	0.0165	50	300
W 07640	3"	0.0428	50	300



T-Y • Long Turn

C x C x C
Cast Style #: D-715*

Item No.	Diameter	Each Wt.	Inner Qty.	Master Carton
A 07082*	1-1/4"	0.9260	1	50
A 07041*	1-1/2"	0.8700	1	10
A 07083*	2"	1.8350	1	10
A 07158*	3"	3.6860	1	10
A 07273*	4"	9.0000	1	4
A 07084*	2" x 2" x 1-1/2"	1.0200	1	25
A 07159*	3" x 3" x 2"	2.7810	1	10



T-Y • Long Turn (Double)

C x C x C x C
Cast Style #: D-717*

Item No.	Diameter	Each Wt.	Inner Qty.	Master Carton
A 07061*	1-1/2"	1.2500	1	25
A 07089*	2"	2.8310	1	10
A 07090*	2" x 2" x 1-1/2" x 1-1/2"	1.9630	1	25



Vent Increaser

C x Tube
Wrot Style #: DW-752



Item No.	Diameter	Each Wt.	Inner Qty.	Master Carton
W 70112	3" x 4" x 18"	4.3694	1	6
W 70111	3" x 4" x 24"	5.9046	1	5



Drum Trap • Swivel

C x C x C.O.
Cast Style #: D-778*

Item No.	Diameter	Each Wt.	Inner Qty.	Master Carton
A 11395*	3" x 6" x 1-1/2"	2.8960	1	10



45° Wye

C x C x C
Cast Style #: D-719*

Item No.	Diameter	Each Wt.	Inner Qty.	Master Carton
A 07005*	1-1/4"	0.6300	1	50
A 07037*	1-1/2"	0.8710	1	50
A 07077*	2"	1.2400	1	25
A 07150*	3"	2.7670	1	20
A 07200*	4"	5.5470	1	5
A 07078*	2" x 2" x 1-1/2"	1.1460	1	50
A 07079*	2" x 2" x 1-1/4"	1.0110	1	50
A 07249*	2" x 1-1/2" x 2"	1.1550	1	40
A 07318*	2" x 1-1/2" x 1-1/2"	0.8500	1	50
A 07152*	3" x 3" x 2"	2.0350	1	25
A 07153*	3" x 3" x 1-1/2"	1.6860	1	25
A 07315*	4" x 4" x 3"	3.9590	1	10
A 07203*	4" x 4" x 2"	2.9040	1	10



P-Trap • w/Cleanout

C x SJ
Cast Style #: D-763*

Item No.	Diameter	Each Wt.	Inner Qty.	Master Carton
A 15660*	1-1/2"	1.7980	1	20
A 15661*	2"	2.6550	1	25



45° Wye • Double

C x C x C x C
Cast Style #: D-720*

Item No.	Diameter	Each Wt.	Inner Qty.	Master Carton
A 07039*	1-1/2"	1.1150	1	50
A 07080*	2"	2.0000	1	20
A 07379*	3"	3.9500	1	10
A 07081*	2" x 2" x 1-1/2" x 1-1/2"	1.2620	1	25



P-Trap
C x SJ
Cast Style #: D-762*

Item No.	Diameter	Each Wt.	Inner Qty.	Master Carton
A 15654*	1-1/2"	1.5000	1	25



Return Bend • w/Cleanout
C x C
Cast Style #: D-783*

Item No.	Diameter	Each Wt.	Inner Qty.	Master Carton
A 15692*	1-1/4"	0.8130	1	50
A 15695*	1-1/2"	0.9780	1	50
A 15698*	2"	1.3980	1	25



P-Trap • w/Cleanout
C x C
Cast Style #: D-761*

Item No.	Diameter	Each Wt.	Inner Qty.	Master Carton
A 15656*	1-1/4"	1.2130	1	50
A 15657*	1-1/2"	1.5310	1	50
A 15658*	2"	2.2610	1	25



P-Trap
C x C
Cast Style #: D-760*

Item No.	Diameter	Each Wt.	Inner Qty.	Master Carton
A 15651*	1-1/2"	1.4530	1	50
A 15652*	2"	2.1130	1	25



P-Trap • w/Union Joint
C x SJ
Cast Style #: D-740*

Item No.	Diameter	Each Wt.	Inner Qty.	Master Carton
A 15636*	1-1/2"	1.8550	1	25

*Cast Bronze

All diameters are nominal.

COPPER FLARE FITTINGS



Streamline® Copper Flare Fittings are for use with above-ground flexible copper tube in common potable water supply systems. These fittings make for easy and flame-free installations and require common tools for assembly. Available in five diameters from 1/2" to 2", these flare fittings come in an assortment of styles to meet common job needs.



- For use in above-ground potable water supply systems
- Made to ASME standard B16.26
- Constructed of high-grade copper or bronze materials
- Meets NSF 61G



90° Elbow • w/Flare Nuts

FL x FL
Cast Style #: WW-816*



Item No.	Diameter	Each Wt.	Inner Qty.	Master Carton
A 12275*	1/2"	0.5400	10	100
A 12276*	3/4"	0.7710	5	50
A 12277*	1"	1.6000	5	50



Adapter • Two Piece

FL x MPT
Cast Style #: WW-813*



Item No.	Diameter	Each Wt.	Inner Qty.	Master Carton
A 12252*	1/2"	0.2900	25	250
A 12352*	3/4"	0.5830	10	50
A 12452*	1"	0.8820	5	50
A 12652*	1-1/2"	1.8900	1	25
A 12752*	2"	2.9450	1	10



Adapter • Two Piece

FL x FPT
Cast Style #: WW-814*



Item No.	Diameter	Each Wt.	Inner Qty.	Master Carton
A 12251*	1/2"	0.3550	25	250
A 12351*	3/4"	0.4760	5	50
A 12451*	1"	1.0340	5	50
A 12651*	1-1/2"	1.9900	1	25
A 12751*	2"	3.2240	1	25



Coupling • Three Piece

FL x FL
Cast Style #: WW-812*



Item No.	Diameter	Each Wt.	Inner Qty.	Master Carton
A 12250*	1/2"	0.4360	10	100
A 12350*	3/4"	0.6780	10	50
A 12450*	1"	1.2600	5	25
A 12550*	1-1/4"	1.9990	5	30
A 12650*	1-1/2"	2.9800	1	10
A 12750*	2"	4.5910	1	10



Flare Nut

FL
Cast Style #: WW-815*



Item No.	Diameter	Each Wt.	Inner Qty.	Master Carton
A 01024*	3/4"	0.2060	50	500
A 01025*	1"	0.3100	1	25



Tee

FL x FL x FL
Cast Style #: WW-817*



Item No.	Diameter	Each Wt.	Inner Qty.	Master Carton
A 12285*	1/2"	0.6750	5	50
A 12286*	3/4"	1.0890	5	25
A 12287*	1"	2.0770	1	10

Streamline[®]

MANUFACTURED TO EXACTING SPECIFICATIONS
FOR THE BEST FIT IN THE INDUSTRY.



PLASTIC FITTINGS



▶ As a leader in high-quality PVC, ABS, Polypropylene and Styrene Fittings for over 20 years, Streamline® Plastic Fittings are designed and manufactured to the most exacting standards. With a fitting to meet most every common residential, commercial, industrial, irrigation and agricultural plumbing system application, our many lines of plastic fittings are simply the best in the industry. Each delivers excellent fit, smooth interior walls and outstanding corrosion and chemical resistance.



- PVC Schedule 40 Pressure Fittings
- Insert Fittings
- ABS DWV Fittings
- PVC DWV Fittings
- PVC Sewer Fittings
- Styrene Sewer Fittings

Streamline®

PVC SCHEDULE 40 PRESSURE FITTINGS



Streamline® PVC Schedule 40 Pressure Fittings are renowned for superior strength and enhanced performance. With a full line of diameters and styles, our fittings are designed and tested under real world "cyclic" pressure conditions so they excel in extreme applications where lesser products often fail. Along with superior strength, our pressure plastic fittings offer smooth inner walls for low pressure drops and superior resistance to chemicals and corrosion.



- For use in cold-water pressure applications including potable water supply, irrigation and pool/spa
- Superior resistance to chemicals and corrosion
- Smooth inner walls provide for low pressure drops
- Made to applicable ASTM standards D2466, D1784, F1498
- Meets NSF 14 and 61G



Tee
SLIP x SLIP x SLIP



Item No.	Diameter	Each Wt.	Inner Qty.	Master Carton
401-005	1/2"	0.0651	50	400
401-007	3/4"	0.0904	50	300
401-010	1"	0.1651	0	50
401-012	1-1/4"	0.2333	0	25
401-015	1-1/2"	0.3494	0	25
401-020	2"	0.5133	0	20
401-025	2-1/2"	1.0241	0	10
401-030	3"	1.4685	1	10
401-040	4"	2.3224	1	5
401-060	6"	5.6100	1	4



Reducing Tee
SLIP x SLIP x SLIP



Item No.	Diameter	Each Wt.	Inner Qty.	Master Carton
401-095	3/4" x 1/2" x 3/4"	0.0940	50	300
401-101	3/4" x 3/4" x 1/2"	0.0863	50	300
401-130	1" x 1" x 1/2"	0.1275	0	50
401-131	1" x 1" x 3/4"	0.1354	0	50
401-167	1-1/4" x 1-1/4" x 3/4"	0.2085	0	25
401-168	1-1/4" x 1-1/4" x 1"	0.2206	0	25
401-210	1-1/2" x 1-1/2" x 3/4"	0.2417	0	25
401-211	1-1/2" x 1-1/2" x 1"	0.2705	0	25
401-251	2" x 2" x 1-1/2"	0.4515	0	20



Tee
SLIP x SLIP x FPT



Item No.	Diameter	Each Wt.	Inner Qty.	Master Carton
402-005	1/2"	0.0753	50	400
402-007	3/4"	0.0955	50	300
402-010	1"	0.1689	0	50
402-012	1-1/4"	0.2599	0	25
402-015	1-1/2"	0.3446	0	25



Reducing Tee
SLIP x SLIP x FPT



Item No.	Diameter	Each Wt.	Inner Qty.	Master Carton
402-101	3/4" x 3/4" x 1/2"	0.0823	50	300
402-130	1" x 1" x 1/2"	0.1277	0	50
402-131	1" x 1" x 3/4"	0.1457	0	50
402-166	1-1/4" x 1-1/4" x 1/2"	0.2115	0	25
402-167	1-1/4" x 1-1/4" x 3/4"	0.2161	0	25
402-209	1-1/2" x 1-1/2" x 1/2"	0.2425	0	25
402-210	1-1/2" x 1-1/2" x 3/4"	0.2976	0	25
402-248	2" x 2" x 3/4"	0.3300	0	20
402-338	3" x 3" x 2"	1.1300	1	10



90° Elbow Reducing
SLIP x SLIP



Item No.	Diameter	Each Wt.	Inner Qty.	Master Carton
406-101	3/4" x 1/2"	0.0588	50	400
406-130	1" x 1/2"	0.0866	0	50
406-131	1" x 3/4"	0.0960	0	50
406-168	1-1/4" x 1"	0.1533	0	25



Tee
SLIP x FPT x SLIP



Item No.	Diameter	Each Wt.	Inner Qty.	Master Carton
403-007	3/4" x 3/4" x 3/4"	0.1018	50	300



90° Elbow
SLIP x FPT



Item No.	Diameter	Each Wt.	Inner Qty.	Master Carton
407-005	1/2"	0.0626	50	600
407-007	3/4"	0.0763	50	400
407-010	1"	0.1351	0	50
407-012	1-1/4"	0.2234	0	25
407-015	1-1/2"	0.3095	0	25
407-020	2"	0.4509	0	25



Tee
FPT x FPT x FPT



Item No.	Diameter	Each Wt.	Inner Qty.	Master Carton
405-005	1/2"	0.1230	50	400
405-007	3/4"	0.1290	50	300
405-010	1"	0.2287	0	50



90° Elbow Reducing
SLIP x FPT



Item No.	Diameter	Each Wt.	Inner Qty.	Master Carton
407-101	3/4" x 1/2"	0.0572	50	600
407-130	1" x 1/2"	0.0842	0	50
407-131	1" x 3/4"	0.1108	0	50
407-251	2" x 1-1/2"	0.3780	0	20



90° Elbow
SLIP x SLIP



Item No.	Diameter	Each Wt.	Inner Qty.	Master Carton
406-005	1/2"	0.0520	50	600
406-007	3/4"	0.0742	50	400
406-010	1"	0.1322	0	50
406-012	1-1/4"	0.1858	0	25
406-015	1-1/2"	0.2314	0	25
406-020	2"	0.3631	0	25
406-025	2-1/2"	0.7714	0	10
406-030	3"	1.1165	1	10
406-040	4"	1.8180	1	5
406-060	6"	4.7207	1	5



90° Elbow
FPT x FPT



Item No.	Diameter	Each Wt.	Inner Qty.	Master Carton
408-005	1/2"	0.0718	50	600
408-007	3/4"	0.0967	50	400

▶ PLASTIC FITTINGS | PVC SCHEDULE 40 PRESSURE FITTINGS



90° Street Elbow
SLIP x SP



Item No.	Diameter	Each Wt.	Inner Qty.	Master Carton
409-005	1/2"	0.0510	50	600
409-007	3/4"	0.0740	50	400
409-010	1"	0.1148	0	50
409-012	1-1/4"	0.2313	0	25
409-015	1-1/2"	0.2580	0	25
409-020	2"	0.3991	0	20



45° Elbow
SLIP x SLIP



Item No.	Diameter	Each Wt.	Inner Qty.	Master Carton
417-005	1/2"	0.0522	50	600
417-007	3/4"	0.0562	50	400
417-010	1"	0.1013	0	50
417-012	1-1/4"	0.1418	25	150
417-015	1-1/2"	0.2011	0	25
417-020	2"	0.3248	0	20
417-025	2-1/2"	0.6214	0	10
417-030	3"	0.8994	1	10
417-040	4"	1.4366	1	5
417-060	6"	3.8640	1	5



90° Street Elbow
SLIP x MPT



Item No.	Diameter	Each Wt.	Inner Qty.	Master Carton
410-005	1/2"	0.0499	50	600
410-007	3/4"	0.0717	50	400
410-010	1"	0.1101	0	50
410-012	1-1/4"	0.2412	0	25
410-015	1-1/2"	0.3190	0	25
410-020	2"	0.4807	0	20



Cross
S x S x S x S



Item No.	Diameter	Each Wt.	Inner Qty.	Master Carton
420-005	1/2"	0.0817	50	300
420-007	3/4"	0.1054	0	50
420-010	1"	0.1812	0	50
420-012	1-1/4"	0.2952	0	25
420-015	1-1/2"	0.4023	0	25
420-020	2"	0.5833	0	10



90° Street Elbow
MPT x FPT



Item No.	Diameter	Each Wt.	Inner Qty.	Master Carton
412-005	1/2"	0.0527	50	600
412-007	3/4"	0.0780	50	400
412-010	1"	0.1183	50	300



Coupling
SLIP x SLIP



Item No.	Diameter	Each Wt.	Inner Qty.	Master Carton
429-005	1/2"	0.0327	50	400
429-007	3/4"	0.0464	50	600
429-010	1"	0.0747	50	300
429-012	1-1/4"	0.1091	25	200
429-015	1-1/2"	0.1545	25	150
429-020	2"	0.2024	0	20
429-025	2-1/2"	0.5121	0	10
429-030	3"	0.6174	1	15
429-040	4"	0.8846	1	5
429-060	6"	2.1000	1	5



90° Street Elbow w/ Side Outlet
SLIP x SLIP x FPT



Item No.	Diameter	Each Wt.	Inner Qty.	Master Carton
414-005	1/2"	0.0600	0	50
414-101	3/4"	0.0800	50	300
414-130	1" x 1" x 1/2"	0.1280	0	50



Coupling Reducing
SLIP x SLIP



Item No.	Diameter	Each Wt.	Inner Qty.	Master Carton
429-101	3/4" x 1/2"	0.0450	50	600
429-131	1" x 3/4"	0.0680	50	200
429-338	3" x 2"	0.5138	5	30



Adapter
FPT x Reducing SLIP



Item No.	Diameter	Each Wt.	Inner Qty.	Master Carton
435-074	3/4" x 1/2"	0.0433	50	600
435-102	1" x 3/4"	0.0620	50	200



Coupling
FPT x FPT



Item No.	Diameter	Each Wt.	Inner Qty.	Master Carton
430-005	1/2"	0.0397	50	400
430-007	3/4"	0.0514	50	600
430-010	1"	0.0920	50	300



Adapter
SLIP x MPT



Item No.	Diameter	Each Wt.	Inner Qty.	Master Carton
436-005	1/2"	0.0331	50	800
436-007	3/4"	0.0461	50	600
436-010	1"	0.0767	50	400
436-012	1-1/4"	0.1119	25	200
436-015	1-1/2"	0.1459	25	150
436-020	2"	0.2043	10	120



Riser Extended
FPT x MPT



Item No.	Diameter	Each Wt.	Inner Qty.	Master Carton
434-005	1/2"	0.0300	50	400



Adapter
SLIP x Reducing MPT



Item No.	Diameter	Each Wt.	Inner Qty.	Master Carton
436-074	3/4" x 1/2"	0.0373	50	600
436-102	1" x 3/4"	0.0739	50	400
436-132	1-1/4" x 1"	0.1012	25	200
436-169	1-1/2" x 1-1/4"	0.1354	25	150
436-213	2" x 1-1/2"	0.1977	10	120



Adapter
SLIP x FPT



Item No.	Diameter	Each Wt.	Inner Qty.	Master Carton
435-005	1/2"	0.0372	50	400
435-007	3/4"	0.0479	50	600
435-010	1"	0.0739	50	300
435-012	1-1/4"	0.1210	25	200
435-015	1-1/2"	0.1503	25	150
435-020	2"	0.2041	0	20



Adapter
SLIP x Reducing FPT



Item No.	Diameter	Each Wt.	Inner Qty.	Master Carton
435-101	3/4" x 1/2"	0.0467	50	600
435-131	1" x 3/4"	0.0712	50	200

PLASTIC FITTINGS | PVC SCHEDULE 40 PRESSURE FITTINGS



Adapter
MPT x Reducing SLIP



Item No.	Diameter	Each Wt.	Inner Qty.	Master Carton
436-101	3/4" x 1/2"	0.0263	50	400
436-131	1" x 3/4"	0.0480	50	400
436-212	1-1/2" x 1-1/4"	0.1173	25	200
436-251	2" x 1-1/2"	0.1804	10	120

(CONTINUED FROM PREVIOUS COLUMN)

Item No.	Diameter	Each Wt.	Inner Qty.	Master Carton
438-251	2" x 1-1/2"	0.1465	10	160
438-290	2-1/2" x 1-1/4"	0.2900	10	80
438-292	2-1/2" x 2"	0.2720	10	80
438-338	3" x 2"	0.4400	10	60
438-339	3" x 2-1/2"	0.4600	10	60
438-421	4" x 2-1/2"	1.0628	5	30
438-422	4" x 3"	1.1320	5	30



Bushing
SPIG x SLIP



Item No.	Diameter	Each Wt.	Inner Qty.	Master Carton
437-101	3/4" x 1/2"	0.0209	50	400
437-130	1" x 1/2"	0.0433	50	800
437-131	1" x 3/4"	0.0357	50	800
437-166	1-1/4" x 1/2"	0.0860	25	200
437-167	1-1/4" x 3/4"	0.0731	25	200
437-168	1-1/4" x 1"	0.0634	25	200
437-209	1-1/2" x 1/2"	0.1090	25	300
437-210	1-1/2" x 3/4"	0.1105	25	300
437-211	1-1/2" x 1"	0.0945	25	300
437-212	1-1/2" x 1-1/4"	0.0673	25	300
437-248	2" x 3/4"	0.1508	10	160
437-249	2" x 1"	0.1643	10	160
437-250	2" x 1-1/4"	0.1424	10	160
437-251	2" x 1-1/2"	0.1321	10	160
437-290	2-1/2" x 1-1/4"	0.2867	10	80
437-291	2-1/2" x 1-1/2"	0.2930	10	80
437-292	2-1/2" x 2"	0.2305	10	80
437-338	3" x 2"	0.4117	10	60
437-339	3" x 2-1/2"	0.3834	10	60



Bushing
MPT x FPT



Item No.	Diameter	Each Wt.	Inner Qty.	Master Carton
439-101	3/4" x 1/2"	0.0210	50	400
439-130	1" x 1/2"	0.0389	50	800
439-131	1" x 3/4"	0.0320	50	800
439-167	1-1/4" x 3/4"	0.0842	25	200
439-168	1-1/4" x 1"	0.0631	25	200
439-210	1-1/2" x 3/4"	0.0983	25	200
439-211	1-1/2" x 1"	0.0913	25	200
439-212	1-1/2" x 1-1/4"	0.0586	25	200
439-249	2" x 1"	0.1446	10	160
439-251	2" x 1-1/2"	0.1118	10	160



Cap
SLIP



Item No.	Diameter	Each Wt.	Inner Qty.	Master Carton
447-005	1/2"	0.0236	50	400
447-007	3/4"	0.0316	50	400
447-010	1"	0.0611	50	400
447-012	1-1/4"	0.0891	25	300
447-015	1-1/2"	0.1259	25	200
447-020	2"	0.1840	10	120
447-025	2-1/2"	0.4250	10	60
447-030	3"	0.5483	10	60
447-040	4"	0.8772	1	5
447-060	6"	2.9042	1	5



Bushing
SPIG x FPT



Item No.	Diameter	Each Wt.	Inner Qty.	Master Carton
438-101	3/4" x 1/2"	0.0233	50	400
438-130	1" x 1/2"	0.0447	50	800
438-131	1" x 3/4"	0.0397	50	800
438-166	1-1/4" x 1/2"	0.0860	25	200
438-167	1-1/4" x 3/4"	0.0800	25	200
438-168	1-1/4" x 1"	0.0682	25	200
438-209	1-1/2" x 1/2"	0.1151	25	300
438-210	1-1/2" x 3/4"	0.1123	25	300
438-211	1-1/2" x 1"	0.1079	25	300
438-212	1-1/2" x 1-1/4"	0.0756	25	300
438-248	2" x 3/4"	0.1671	10	160
438-249	2" x 1"	0.1716	10	160
438-250	2" x 1-1/4"	0.1630	10	160

(CONTINUED NEXT COLUMN)



Cap
FPT



Item No.	Diameter	Each Wt.	Inner Qty.	Master Carton
448-005	1/2"	0.0272	50	400
448-007	3/4"	0.0372	50	400
448-010	1"	0.0611	50	400
448-012	1-1/4"	0.0966	25	300
448-015	1-1/2"	0.1243	25	200
448-020	2"	0.1925	10	120



Union w/ Buna O-Ring
SLIP x SLIP



Item No.	Diameter	Each Wt.	Inner Qty.	Master Carton
457-007	3/4"	0.1580	10	80



Plug
SPIG



Item No.	Diameter	Each Wt.	Inner Qty.	Master Carton
449-005	1/2"	0.0180	50	400
449-007	3/4"	0.0247	50	400
449-010	1"	0.0430	50	800
449-012	1-1/4"	0.0700	25	200
449-015	1-1/2"	0.0972	25	300
449-020	2"	0.1360	10	160



Coupling Deep Socket
SLIP



Item No.	Diameter	Each Wt.	Inner Qty.	Master Carton
482-007	3/4"	0.0462	0	50



Plug
MPT



Item No.	Diameter	Each Wt.	Inner Qty.	Master Carton
450-005	1/2"	0.0169	50	400
450-007	3/4"	0.0245	50	400
450-010	1"	0.0401	50	800
450-012	1-1/4"	0.0685	25	200
450-015	1-1/2"	0.0878	25	200
450-020	2"	0.1180	10	160



R-Trap Condensate Drain Line



Item No.	Diameter	Each Wt.	Inner Qty.	Master Carton
488-005	1/2" (315 psi)	0.1000	0	50
488-007	3/4"	0.2000	0	50
488-010	1"	0.4000	0	10



P-Trap Condensate Drain Line



Item No.	Diameter	Each Wt.	Inner Qty.	Master Carton
489-007	3/4"	0.2000	0	50
489-010	1"	0.4000	0	10

INSERT FITTINGS



Streamline® Insert Fittings are available in polypropylene. These fittings are designed to connect flexible polyethylene plastic tubing using either clamps or compression fittings. Because polyethylene plastic tubing comes in long coils, requires more support and is subject to kinking if bent too far, the ease of use and reliability of our insert fittings simplifies the installation of flexible plastic tubing and hosing systems.



- Use in the installation of flexible plastic tubing and hosing in cold-water applications including underground sprinkler systems
- Smooth walls prevent scaling and provide for free flow
- Compatible with polyethylene tubing
- Made to applicable ASTM standards D2609 & F1498
- Meets NSF 14 and 61G



90° Elbow Combination
Insert x FPT



Item No.	Diameter	Each Wt.	Inner Qty.	Master Carton
POLY				
04177	1/2"	0.0474	10	300
04179	3/4"	0.0765	25	450
04333	1"	0.1000	0	25
04337	1-1/4"	0.1700	5	60
04339	1-1/2"	0.2300	0	10
04341	2"	0.3900	5	40



90° Elbow
Insert x Insert



Item No.	Diameter	Each Wt.	Inner Qty.	Master Carton
POLY				
04170	1/2"	0.02	10	800
04171	3/4"	0.032	10	450
04172	1"	0.052	10	200
04173	1-1/4"	0.086	10	120
04174	1 1/2"	0.111	10	100
04175	2"	0.238	5	60



90° Elbow Combination Reducing
Insert x FPT



Item No.	Diameter	Each Wt.	Inner Qty.	Master Carton
POLY				
04176	3/4" X 1/2"	0.0518	10	250
04331	1" X 1/2"	0.0850	10	200
04332	1" X 3/4"	0.0850	10	180
04334	1-1/4" X 1/2"	0.1000	0	25
04335	1-1/4" X 3/4"	0.1100	0	10
04336	1-1/4" X 1"	0.1400	5	150
04337	1-1/2" x 1-1/4"	0.2100	0	10
04340	2" X 1-1/2"	0.3100	5	40



Coupling
Insert x Insert



Item No.	Diameter	Each Wt.	Inner Qty.	Master Carton
POLY				
04150	1/2"	0.0160	25	1200
04151	3/4"	0.0250	25	600
04152	1"	0.0390	25	400
04153	1-1/4"	0.0600	10	200
04154	1-1/2"	0.0820	10	140
04155	2"	0.1250	5	60
04400	3"	0.4400	5	10



Coupling • Reducing
Insert x Insert



Item No.	Diameter	Each Wt.	Inner Qty.	Master Carton
POLY				
04317	3/4" X 1/2"	0.0300	10	1000
04318	1" X 3/4"	0.0400	10	600
04319	1-1/4" X 1"	0.0800	10	240
04320	1-1/2" X 1-1/4"	0.1100	5	140
04321	2" X 1 1/2"	0.0900	5	120



Female Adapter
FIP x FPT



Item No.	Diameter	Each Wt.	Inner Qty.	Master Carton
POLY				
04784	1/2"	0.0240	25	900
04785	3/4"	0.0330	15	360
04786	1"	0.0510	10	260
04787	1-1/4"	0.1070	10	150
04788	1-1/2"	0.1290	10	120
04789	2"	0.1700	10	60



Insert Plug
Insert



Item No.	Diameter	Each Wt.	Inner Qty.	Master Carton
POLY				
04325	1/2"	0.0200	5	750
04326	3/4"	0.0200	10	700
04327	1"	0.0300	10	200



Male Adapter
MIP x MPT



Item No.	Diameter	Each Wt.	Inner Qty.	Master Carton
POLY				
04180	1/2"	0.0160	25	1200
04181	3/4"	0.0240	25	700
04182	1"	0.0400	25	350
04183	1-1/4"	0.0610	10	150
04184	1-1/2"	0.0760	10	140
04185	2"	0.1330	5	60
04403	3"	0.4100	0	10



Male Adapter • Reducing
MIP x MPT



Item No.	Diameter	Each Wt.	Inner Qty.	Master Carton
POLY				
04306	3/4" X 1/2"	0.0300	10	300
04307	1" X 3/4"	0.0700	10	400
04308	1-1/4" X 1"	0.0800	10	160
04309	1-1/2" X 1-1/4"	0.0840	5	150
04310	2" X 1-1/2"	0.1230	0	10
04313	3/4" X 1/2"	0.0410	10	300
04314	1" X 3/4"	0.0450	10	250
04315	1-1/4" X 1"	0.0700	5	120

▶ PLASTIC FITTINGS | INSERT FITTINGS



Reducing Elbow
Insert x FPT



Item No.	Diameter	Each Wt.	Inner Qty.	Master Carton
POLY				
04331	1" X 1/2"	0.0850	10	200
04332	1" X 3/4"	0.0850	10	180
04334	1-1/4" X 1/2"	0.1000	0	25
04335	1-1/4" X 3/4"	0.1100	0	10
04336	1-1/4" X 1"	0.1400	5	150
04338	1-1/2" X 1-1/4"	0.2100	0	10
04340	2" X 1-1/2"	0.3100	5	40



Reducing Elbow
Insert x MPT



Item No.	Diameter	Each Wt.	Inner Qty.	Master Carton
POLY				
04342	1/2"	0.0300	10	300
04343	3/4"	0.0500	10	300
04344	1"	0.0700	10	240
04345	1-1/4"	0.1200	5	60
04346	1 1/2"	0.1800	5	80
04347	2"	0.3000	5	60



Reducing Tee
Insert x Insert x FPT



Item No.	Diameter	Each Wt.	Inner Qty.	Master Carton
POLY				
04166	3/4" X 3/4" X 1/2"	0.0710	10	300
04357	1" X 1" X 1/2"	0.0930	10	240
04358	1" X 1" X 3/4"	0.0960	10	100
04359	1" X 1" X 1"	0.1300	10	80
04360	1-1/4" X 1-1/4" X 1/2"	0.1400	10	140
04361	1-1/4" X 1-1/4" X 3/4"	0.1400	5	60
04362	1-1/4" X 1-1/4" X 1"	0.1700	5	60
04365	1-1/2" X 1-1/2" X 1 1/4"	0.2900	0	5
04366	2" X 2" X 1-1/2"	0.4500	0	5
04367	2" X 2" X 2"	0.4500	0	5



Reducing Tee
Insert x Insert x Insert



Item No.	Diameter	Each Wt.	Inner Qty.	Master Carton
POLY				
04368	3/4" X 3/4" X 1/2"	0.0610	10	320
04369	1" X 1" X 3/4"	0.2300	10	160
04370	1-1/4" X 1-1/4" X 1"	0.1600	15	120
04372	2" X 2" X 1-1/2"	0.3200	5	30



Tee
Insert x Insert x FPT



Item No.	Diameter	Each Wt.	Inner Qty.	Master Carton
POLY				
04159	3/4"	0.0932	10	100
04167	1/2"	0.0617	10	400
04363	1-1/4"	0.2400	0	10
04364	1-1/2"	0.2600	5	60



Tee
Insert x Insert Insert



Item No.	Diameter	Each Wt.	Inner Qty.	Master Carton
POLY				
04160	1/2"	0.0280	10	450
04161	3/4"	0.0450	10	200
04162	1"	0.0780	5	120
04163	1-1/4"	0.1670	5	60
04164	1 1/2"	0.2300	5	40
04165	2"	0.3370	5	30



Tee
Insert x Insert x MPT



Item No.	Diameter	Each Wt.	Inner Qty.	Master Carton
POLY				
04381	1/2"	0.0500	15	480
04382	3/4"	0.0600	10	120
04383	1"	0.1000	5	80

ABS DWV FITTINGS



Streamline® ABS DWV Fittings are manufactured to exact specifications to ensure the best fit in the industry. Each fitting delivers excellent rigidity and smooth interior walls to improve flow, inhibit scaling and provide superior resistance to chemicals and corrosion. Our stringent quality control protocols guarantee that our fittings fit and perform flawlessly, piece after piece. All fittings are packaged in standard industry carton quantities and dimensions, and utilize an intuitive, easily interpreted style numbering system.



- For use in non-pressurized drain, waste and vent sanitary systems
- Smooth, consistent interior walls provide for full flow and increased resistance to corrosion and scaling
- Superior resistance to chemicals and corrosion
- Uniform interior and exterior walls improve joint strength and reliability
- Made to applicable ASTM standards D2661, F1498, D3311, D3965
- Meets NSF 14



Coupling
H x H
Style #: A100



Item No.	Diameter	Each Wt.	Inner Qty.	Master Carton
02932	1-1/4"	0.0600	0	50
02933	1-1/2"	0.0665	0	100
02934	2"	0.1010	0	100
02935	3"	0.3360	0	60
02936	4"	0.5775	0	25
03143	6"	1.6340	1	15



Pipe Increaser/Reducer
H x H
Style #: A102



Item No.	Diameter	Each Wt.	Inner Qty.	Master Carton
02948	2" x 1-1/2"	0.1180	0	25
02949	3" x 1-1/2"	0.2960	0	50
02950	3" x 2"	0.3140	0	20
02951	4" x 2"	0.5020	0	10
02952	4" x 3"	0.5720	0	20



Adapter • Female
H x FPT
Style #: A101



Item No.	Diameter	Each Wt.	Inner Qty.	Master Carton
03006*	1-1/4"	0.0880	0	50
02866	1-1/2"	0.0730	0	100
02867	2"	0.1120	0	100
02869	3"	0.3690	0	30
03396	4"	0.5790	0	10
03147	6"	1.3180	1	10



**Adapter • Trap • Male
w/ One-Piece Poly Nut**
SP x SJ
Style #: A103P



Item No.	Diameter	Each Wt.	Inner Qty.	Master Carton
03391	1-1/4"	0.0795	0	50
03393	1-1/2"	0.1507	0	50
03379	1-1/2" x 1-1/4"	0.0940	0	75

*Not CSA recognized.



Adapter • Trap • Male w/Plastic Nut & Washers

SP x SJ
Style #: A103R



Item No.	Diameter	Each Wt.	Inner Qty.	Master Carton
03389	1-1/2" x 1-1/4"	0.0975	0	50
- OR -				
03389	1-1/2"	0.0975	0	50



Adapter • Trap • Female w/Chrome Nut & Washer

H x SJ
Style #: A104X



Item No.	Diameter	Each Wt.	Inner Qty.	Master Carton
03376*	1-1/2"	0.1452	0	50
03397	2"	0.1540	0	25
03394*	1-1/2" x 1-1/4"	0.1536	0	50



Adapter • Trap • Male w/Plastic Nut & Washer

SP x SJ
Style #: A103W



Item No.	Diameter	Each Wt.	Inner Qty.	Master Carton
03308	1-1/4"	0.0795	0	50
03410	1-1/2"	0.0905	0	50
03390	2"	0.1200	0	25
03409	1-1/2" x 1-1/4"	0.0940	0	50



Adapter • Cleanout

SP x FPT
Style #: A105



Item No.	Diameter	Each Wt.	Inner Qty.	Master Carton
02922	1-1/2"	0.0700	0	50
02923	2"	0.1040	0	50
02924	3"	0.3360	0	25
02925	4"	0.5270	0	10
03148	6"	1.1300	1	10



Adapter • Trap • Male w/Chrome Nut & Washer

SP x SJ
Style #: A103X



Item No.	Diameter	Each Wt.	Inner Qty.	Master Carton
03309	1-1/4"	0.1400	0	50
03392	1-1/2"	0.1445	0	50
03378	1-1/2" x 1-1/4"	0.1296	0	100



Adapter • Cleanout w/Cleanout Plug

SP x FPT
Style #: A105X



Item No.	Diameter	Each Wt.	Inner Qty.	Master Carton
03001	1-1/2"	0.1100	0	50
03002	2"	0.1540	0	50
03003	3"	0.4880	0	25
03004	4"	0.9050	0	10
03005	6"	1.6700	1	10



Adapter • Trap • Female w/One-Piece Poly Nut

H x SJ
Style #: A104P



Item No.	Diameter	Each Wt.	Inner Qty.	Master Carton
03381	1-1/4"	0.0795	0	50
03377	1-1/2"	0.0912	0	50
03395	1-1/2" x 1-1/4"	0.0956	0	50



Plug • Cleanout

MPT
Style #: A106



Item No.	Diameter	Each Wt.	Inner Qty.	Master Carton
02938	1-1/2"	0.0460	0	50
02939	2"	0.0660	0	50
02941	3"	0.1520	0	25
02943	3-1/2"	0.1900	0	30
02942	4"	0.2400	0	30
03146	6"	0.5400	1	10



Adapter • Trap • Female w/Plastic Nut & Washer

H x SJ
Style #: A104W



Item No.	Diameter	Each Wt.	Inner Qty.	Master Carton
03380	1-1/4"	0.0844	0	50
03383	1-1/2"	0.0940	0	50
03382	2"	0.1464	0	25
03384	1-1/2" x 1-1/4"	0.0980	0	50

*Not CSA recognized.

PLASTIC FITTINGS | ABS DWV FITTINGS



Plug • Slip
SP
Style #: A106P



Item No.	Diameter	Each Wt.	Inner Qty.	Master Carton
03055	1-1/2"	0.0540	0	25
03056*	2"	0.0600	0	50



Plug • Cleanout • Flush
MPT
Style #: A110



Item No.	Diameter	Each Wt.	Inner Qty.	Master Carton
03015	4"	0.3280	0	25



Bushing • Flush
SP x H
Style #: A107



Item No.	Diameter	Each Wt.	Inner Qty.	Master Carton
02904	1-1/2" x 1-1/4"	0.0240	0	100
02905	2" x 1-1/4"	0.0900	0	50
02906	2" x 1-1/2"	0.0600	0	50
02907	3" x 1-1/2"	0.2140	0	30
02908	3" x 2"	0.2280	0	30
02910	4" x 2"	0.4500	0	30
02909	4" x 3"	0.3610	0	30



Adapter • Male
SP x MPT
Style #: A111



Item No.	Diameter	Each Wt.	Inner Qty.	Master Carton
03010*	1-1/4"	0.0550	0	50
03386	1-1/2"	0.0580	0	50
03385	2"	0.0800	0	25
03366	3"	0.2810	0	25
03387*	1-1/2" x 1-1/4"	0.0650	0	100



Bushing • Flange w/Tube Stop
SP x H
Style #: A107S



Item No.	Diameter	Each Wt.	Inner Qty.	Master Carton
03144	6" x 4"	1.4230	1	10



Adapter • Tray Plug
H x NPSM Threaded
Style #: A113



Item No.	Diameter	Each Wt.	Inner Qty.	Master Carton
03014	1-1/2"	0.1505	0	50



**Bushing • Flush
(Cleanout Adapter)**
SP x FPT
Style #: A108



Item No.	Diameter	Each Wt.	Inner Qty.	Master Carton
02912*	1-1/2" x 1-1/4"	0.0400	0	50
02913	2" x 1-1/2"	0.0840	0	50



Adapter • Tray Plug Spigot
SP x NPSM Threaded
Style #: A113S



Item No.	Diameter	Each Wt.	Inner Qty.	Master Carton
03419	1-1/2"	0.1543	0	50



Adapter • Male
H x MPT
Style #: A109



Item No.	Diameter	Each Wt.	Inner Qty.	Master Carton
02931	1-1/4"	0.0540	0	50
02927	1-1/2"	0.0620	0	50
02928	2"	0.0940	0	50
02929	3"	0.2800	0	25
02930	4"	0.4540	0	10
02926	1-1/2" x 1-1/4"	0.0710	0	25



Cap • Threaded
FPT
Style #: A114



Item No.	Diameter	Each Wt.	Inner Qty.	Master Carton
02993	1-1/2"	0.0610	0	100
02994	2"	0.0790	0	50
02995	3"	0.2830	0	25

*Not CSA recognized.



Cap • Socket

H
Style #: A116



Item No.	Diameter	Each Wt.	Inner Qty.	Master Carton
02977	1-1/2"	0.0640	0	50
02978	2"	0.0950	0	25
02979	3"	0.2050	0	25
02980	4"	0.5270	0	5



Adapter • Hub • Cast Iron Increaser

CI SP x DWV Hub
Style #: A123R



Item No.	Diameter	Each Wt.	Inner Qty.	Master Carton
02964	3" x 1-1/2"	0.1450	0	10
02960	4" x 3"	0.7800	0	10

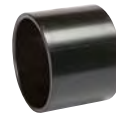


Adapter • Coupling

S/D H x DWV H
Style #: A117



Item No.	Diameter	Each Wt.	Inner Qty.	Master Carton
02970*	3"	0.4020	0	10
02963	4"	0.4320	0	10
02962	4" x 3"	0.3280	0	20



Coupling • Repair

H x H
Style #: A130



Item No.	Diameter	Each Wt.	Inner Qty.	Master Carton
02965	1-1/2"	0.0640	0	20
02966	2"	0.0880	0	20
02967	3"	0.3200	0	20
02968	4"	0.5090	0	5



Adapter • Bushing

DWV SP x S/D Hub
Style #: A118



Item No.	Diameter	Each Wt.	Inner Qty.	Master Carton
02990	3"	0.0860	0	25
02991	4"	0.1450	0	10



Cap • Test • Styrene

Fits Pipe I.D.
Style #: A131



Item No.	Diameter	Each Wt.	Inner Qty.	Master Carton
02411	1-1/2"	0.0080	0	100
02412	2"	0.0130	0	100
02413	3"	0.0260	0	50
02414	4"	0.0450	0	50



Adapter • No Hub

CI No Hub x DWV Hub
Style #: A119



Item No.	Diameter	Each Wt.	Inner Qty.	Master Carton
02954*	2"	0.1220	0	25
02955	3"	0.3030	0	20
02956	4"	0.4941	0	15



Nut • Slip Joint • Plastic

NPSM Thread
Style #: A140



Item No.	Diameter	Each Wt.	Inner Qty.	Master Carton
02743	1-1/4"	0.0280	0	400
02744	1-1/2"	0.0300	0	100
02741	2"	0.0423	0	100



Adapter • Hub • Cast Iron

CI SP x DWV Hub
Style #: A123



Item No.	Diameter	Each Wt.	Inner Qty.	Master Carton
02957	2"	0.2270	0	20
02958*	3"	0.5360	0	10
02959	4"	0.8600	0	20



Washer • Slip Joint

SJ
Style #: A141



Item No.	Diameter	Each Wt.	Inner Qty.	Master Carton
02747	1-1/2"	0.0020	100	2000
02748	1-1/2" x 1-1/4"	0.0080	100	500

*Not CSA recognized.

▶ PLASTIC FITTINGS | ABS DWV FITTINGS



Elbow • 1/4 Bend

H x H
Style #: A300



Item No.	Diameter	Each Wt.	Inner Qty.	Master Carton
02875*	1-1/4"	0.1300	0	50
02876	1-1/2"	0.1465	0	100
02877	2"	0.2400	0	50
02878	3"	0.7550	0	25
02879	4"	1.3370	0	10
03130	6"	3.5880	1	5



Elbow • Long Sweep 1/4 Bend

H x H
Style #: A304



Item No.	Diameter	Each Wt.	Inner Qty.	Master Carton
02870*	1-1/4"	0.1650	0	50
02871	1-1/2"	0.2105	0	50
02872	2"	0.3175	0	25
02873	3"	0.8890	0	10
02874	4"	1.6050	0	5



Elbow • 1/4 Bend • Reducing

H x H
Style #: A300R



Item No.	Diameter	Each Wt.	Inner Qty.	Master Carton
03092	2" x 1-1/2"	0.2360	0	10



Elbow • Long Sweep 1/4 Bend • w/High Inlet

All Hub
Style #: A305



Item No.	Diameter	Each Wt.	Inner Qty.	Master Carton
03028*	3" x 3" x 1-1/2"	0.9580	0	10
03027	3" x 3" x 2"	0.9590	0	25



Elbow • Side Inlet • 1/4 Bend

All Hub
Style #: A300S



Item No.	Diameter	Each Wt.	Inner Qty.	Master Carton
03069	3" x 3" x 1-1/2"	0.7940	0	10
03070	3" x 3" x 2"	0.7960	0	10



Elbow • Long Sweep 1/4 Bend • w/Low Inlet

All Hub
Style #: A307



Item No.	Diameter	Each Wt.	Inner Qty.	Master Carton
03025	3" x 3" x 1-1/2"	0.9610	0	10
03024	3" x 3" x 2"	0.9810	0	25



Elbow • Street • 1/4 Bend

SP x H
Style #: A302



Item No.	Diameter	Each Wt.	Inner Qty.	Master Carton
02894*	1-1/4"	0.1240	0	50
02880	1-1/2"	0.1490	0	100
02881	2"	0.2350	0	50
02882	3"	0.7030	0	20
02883	4"	1.2910	0	10
02889*	6"	3.3200	1	5



Elbow • Long Sweep 1/4 Bend • Street

SP x H
Style #: A309



Item No.	Diameter	Each Wt.	Inner Qty.	Master Carton
03060	1-1/2"	0.1990	0	50
03061	2"	0.2925	0	25
03063	3"	0.8500	0	20



Elbow • Street • 1/4 Bend w/Low Heel Inlet

All Hub
Style #: A303



Item No.	Diameter	Each Wt.	Inner Qty.	Master Carton
03041	3" x 3" x 1-1/2"	0.8050	0	25
03042	3" x 3" x 2"	0.7940	0	25
03043*	4" x 4" x 2"	1.3760	0	15



Elbow • 1/4 Bend w/Low Inlet • Street

H x SP x H
Style #: A310



Item No.	Diameter	Each Wt.	Inner Qty.	Master Carton
03026	3" x 3" x 2"	0.8220	0	15

*Not CSA recognized.



Elbow • Long Sweep 1/4 Bend • w/Side Inlet

All Hub
Style #: A311



Item No.	Diameter	Each Wt.	Inner Qty.	Master Carton
03051*	3" x 3" x 1-1/2"	0.9570	0	10
03050	3" x 3" x 2"	0.9640	0	25



Elbow • 1/8 Bend • Street

SP x H
Style #: A323



Item No.	Diameter	Each Wt.	Inner Qty.	Master Carton
03016*	1-1/4"	0.1110	0	50
02890	1-1/2"	0.1315	0	100
02891	2"	0.1965	0	50
02892	3"	0.5840	0	20
02893	4"	1.1050	0	10
03133	6"	3.0300	1	3



Elbow • 1/6 Bend

H x H
Style #: A319



Item No.	Diameter	Each Wt.	Inner Qty.	Master Carton
02895	1-1/2"	0.1390	0	40
02896	2"	0.2220	0	25
02897	3"	0.6050	0	20
02982	4"	1.0440	0	10



Elbow • 1/16 Bend

H x H
Style #: A324



Item No.	Diameter	Each Wt.	Inner Qty.	Master Carton
02899	1-1/2"	0.1000	0	50
02900	2"	0.1610	0	25
02901	3"	0.4515	0	20
02983	4"	0.8300	0	15
02988*	6"	3.8700	1	3



Elbow • 1/6 Bend • Street

SP x H
Style #: A320



Item No.	Diameter	Each Wt.	Inner Qty.	Master Carton
03020*	1-1/2"	0.1280	0	40
03021	2"	0.2110	0	25
03022*	3"	0.5700	0	20
03023*	4"	1.1000	0	5



Elbow • 1/16 Bend • Street

SP x H
Style #: A326



Item No.	Diameter	Each Wt.	Inner Qty.	Master Carton
02984	1-1/2"	0.0900	0	50
02985	2"	0.1530	0	25
02986	3"	0.4195	0	20
02987	4"	0.7540	0	10



Elbow • 1/8 Bend

H x H
Style #: A321



Item No.	Diameter	Each Wt.	Inner Qty.	Master Carton
02884	1-1/4"	0.1100	0	50
02885	1-1/2"	0.1415	0	100
02886	2"	0.2065	0	50
02887	3"	0.6095	0	20
02888	4"	1.1600	0	10
03132*	6"	3.1390	1	3



Elbow • Double • 1/4 Bend

All Hub
Style #: A327



Item No.	Diameter	Each Wt.	Inner Qty.	Master Carton
03045	1-1/2"	0.2700	0	20
03046	2"	0.3980	0	25
03047	3"	1.1320	0	10
03049	2" x 1-1/2" x 1-1/2"	0.4600	0	25

▶ PLASTIC FITTINGS | ABS DWV FITTINGS



Elbow • Closet Bend Reducing • Short Radius

SP x H
Style #: A328



Item No.	Diameter	Each Wt.	Inner Qty.	Master Carton
03105	4" x 3"	1.0230	0	10



Elbow • Vent

H x FPT
Style #: A332



Item No.	Diameter	Each Wt.	Inner Qty.	Master Carton
03071	3"	0.6450	0	20



Elbow • Closet Bend Reducing • Short Radius w/Test Cap

SP x H
Style #: A328X



Item No.	Diameter	Each Wt.	Inner Qty.	Master Carton
03104	4" x 3"	1.0728	0	10



Elbow • Vent • Street

SP x H
Style #: A333



Item No.	Diameter	Each Wt.	Inner Qty.	Master Carton
03088	1-1/2"	0.1300	0	25
03089	2"	0.1950	0	20
03090	3"	0.6920	0	10



Elbow • Closet Bend Reducing

SP x H
Style #: A329



Item No.	Diameter	Each Wt.	Inner Qty.	Master Carton
03093	4" x 3"	1.0480	0	10



Tee • Sanitary

All Hub
Style #: A400



Item No.	Diameter	Each Wt.	Inner Qty.	Master Carton
02751	1-1/4"	0.1700	0	50
02752	1-1/2"	0.2115	0	100
02753	2"	0.3545	0	35
02754	3"	1.0135	0	30
02755	4"	1.8170	0	5
02756	6"	4.6700	1	5



Elbow • Closet Bend Reducing • Street Elbow

SP x H
Style #: A330



Item No.	Diameter	Each Wt.	Inner Qty.	Master Carton
03107	4" x 3"	1.1275	0	10



Elbow • Closet Bend Reducing • Street • Test Cap

SP x H
Style #: A330X



Item No.	Diameter	Each Wt.	Inner Qty.	Master Carton
03108	4" x 3"	1.1918	0	10



Tee • Sanitary • Reducing

All Hub
Style #: A401



Item No.	Diameter	Each Wt.	Inner Qty.	Master Carton
02759*	1-1/2" x 1-1/4" x 1-1/4"	0.1850	0	20
02762*	1-1/2" x 1-1/4" x 1-1/2"	0.2300	0	20
02757*	1-1/2" x 1-1/2" x 1-1/4"	0.2010	0	20
02761	2" x 1-1/2" x 1-1/2"	0.2835	0	25
02760	2" x 1-1/2" x 2"	0.3370	0	25
02758*	2" x 2" x 1-1/2"	0.2965	0	50
02764	3" x 3" x 1-1/2"	0.6020	0	20
02763	3" x 3" x 2"	0.6880	0	10
02765	4" x 4" x 2"	1.0740	0	10
02766	4" x 4" x 3"	1.4300	0	10
02768*	6" x 6" x 4"	3.0600	1	6



Elbow • Vent

H x H
Style #: A331



Item No.	Diameter	Each Wt.	Inner Qty.	Master Carton
03084	1-1/2"	0.1490	0	20
03085	2"	0.0950	0	30
03086	3"	0.5810	0	25
03087	4"	1.0500	0	10

*Not CSA recognized.



Tee • Sanitary • Street

SP x H x H
Style #: A403



Item No.	Diameter	Each Wt.	Inner Qty.	Master Carton
03112	1-1/2"	0.2000	0	20
03113	2"	0.3165	0	25
03114	3"	0.9700	0	30
03120	4"	1.7620	0	10



Tee • Double • Sanitary

All Hub
Style #: A428



Item No.	Diameter	Each Wt.	Inner Qty.	Master Carton
02812	1-1/2"	0.3030	0	25
02813	2"	0.4510	0	20
02814	3"	1.2800	0	20
02815	4"	2.1890	0	4



Tee • Sanitary • Street Reducing

SP x H x H
Style #: A404



Item No.	Diameter	Each Wt.	Inner Qty.	Master Carton
03115	2" x 1-1/2" x 1-1/2"	0.2750	0	25
03116	2" x 1-1/2" x 2"	0.3420	0	25
03117	2" x 2" x 1-1/2"	0.2850	0	50
03118	3" x 3" x 1-1/2"	0.5750	0	10
03119	3" x 3" x 2"	0.6600	0	20



Tee • Double • Sanitary Reducing

All Hub
Style #: A429



Item No.	Diameter	Each Wt.	Inner Qty.	Master Carton
02817	2" x 2" x 1-1/2" x 1-1/2"	0.3640	0	20
02818	3" x 3" x 1-1/2" x 1-1/2"	0.6420	0	20
02819*	3" x 3" x 2" x 1-1/2"	0.7670	0	10
02820	3" x 3" x 2" x 2"	0.7890	0	10
02240	4" x 4" x 2" x 2"	1.7480	0	10
02821*	4" x 4" x 3" x 3"	1.6130	0	5



Tee • Sanitary w/Left Side Inlet

All Hub
Style #: A416



Item No.	Diameter	Each Wt.	Inner Qty.	Master Carton
02780	3" x 3" x 2" x 2"	0.9180	0	10
02781	3" x 3" x 3" x 1-1/2"	1.0800	0	10
02782	3" x 3" x 3" x 2"	1.1280	0	10



Tee • Double • Sanitary Street • Reducing

SP x H x H x H
Style #: A431



Item No.	Diameter	Each Wt.	Inner Qty.	Master Carton
03310	3" x 3" x 2" x 2"	0.8000	0	10



Tee • Sanitary w/Right Side Inlet

All Hub
Style #: A417



Item No.	Diameter	Each Wt.	Inner Qty.	Master Carton
02795	3" x 3" x 3" x 1-1/2"	1.1160	0	10
02796	3" x 3" x 3" x 2"	1.2020	0	10



Tee • Double • Sanitary w/Side Inlet

All Hub
Style #: A438



Item No.	Diameter	Each Wt.	Inner Qty.	Master Carton
02772	3" x 3" x 3" x 3" x 2"	1.5800	0	10



Tee • Sanitary w/Left & Right Inlet

All Hub
Style #: A418



Item No.	Diameter	Each Wt.	Inner Qty.	Master Carton
02810*	3" x 3" x 3" x 1-1/2" x 1-1/2"	0.3860	0	10
02811	3" x 3" x 3" x 2" x 2"	1.3330	0	5



Tee • Double • Sanitary w/Right and Left Side Inlet

All Hub
Style #: A439



Item No.	Diameter	Each Wt.	Inner Qty.	Master Carton
02770	3" x 3" x 3" x 3" x 2" x 2"	1.5500	0	10

*Not CSA recognized.

▶ PLASTIC FITTINGS | ABS DWV FITTINGS



Tee Vent
All Hub
Style #: A441



Item No.	Diameter	Each Wt.	Inner Qty.	Master Carton
03403	1-1/2"	0.1990	0	25
03404	2"	0.2770	0	25
03405	3"	0.9180	0	10
03406	4"	1.4000	0	5



Tee • Fixture
H x H x FPT
Style #: A450



Item No.	Diameter	Each Wt.	Inner Qty.	Master Carton
03012	1-1/2"	0.2050	0	50
03402	2" x 2" x 1-1/2"	0.2400	0	25



Tee • Cleanout w/Cleanout Plug
H x H x FPT
Style #: A444X



Item No.	Diameter	Each Wt.	Inner Qty.	Master Carton
02997	1-1/2"	0.2544	0	10
02998	2"	0.3620	0	10
02999	3"	0.8926	0	10
03000	4"	1.5930	0	5



Tee • Double Fixture • Street
SP x H x H
Style #: A499



Item No.	Diameter	Each Wt.	Inner Qty.	Master Carton
02245	3"	1.7800	0	5



Tee • Flush Cleanout
H x H x FPT
Style #: A445



Item No.	Diameter	Each Wt.	Inner Qty.	Master Carton
03413	1-1/2"	0.1990	0	20
03414	2"	0.2500	0	20
03415	3"	0.7410	0	10
03416	4"	1.3700	0	10



Tee • Double Fixture
All Hub
Style #: A500



Item No.	Diameter	Each Wt.	Inner Qty.	Master Carton
02246	2"	0.6200	0	25
02249	3"	1.8300	0	5



Cleanout • Two Way
All Hub
Style #: A448



Item No.	Diameter	Each Wt.	Inner Qty.	Master Carton
02237	3"	1.4430	0	10
02238	4"	2.5500	0	5



Wye • Double Fixture
All Hub
Style #: A500



Item No.	Diameter	Each Wt.	Inner Qty.	Master Carton
02247	2" x 1-1/2" x 1-1/2" x 1-1/2"	0.4290	0	20
02248	2" x 1-1/2" x 2" x 2"	0.5800	0	25
02244	2" x 2" x 1-1/2" x 1-1/2"	0.5020	0	20
02250	3" x 2" x 3" x 3"	1.7000	0	5



Combination Wye & 1/8 Bend-One Piece
All Hub
Style #: A501



Item No.	Diameter	Each Wt.	Inner Qty.	Master Carton
02853	1-1/2"	0.3610	0	50
02858	2"	0.5280	0	20
02852	3"	1.6360	0	10
02860	4"	3.1200	0	10

*Not CSA recognized.



Combination Wye & 1/8 Bend Reducing • One Piece

All Hub
Style #: A502



Item No.	Diameter	Each Wt.	Inner Qty.	Master Carton
02835	2" x 1-1/2" x 1-1/2"	0.3940	0	5
02836	2" x 1-1/2" x 2"	0.5269	0	5
02865	2" x 2" x 1-1/2"	0.3970	0	20
02837	3" x 3" x 1-1/2"	0.7795	0	15
02857	3" x 3" x 2"	0.9140	0	10
02863	4" x 4" x 2"	1.3270	0	5
02864	4" x 4" x 3"	2.1070	0	5



Combination Wye & 1/8 Bend Two Piece

All Hub
Style #: A503



Item No.	Diameter	Each Wt.	Inner Qty.	Master Carton
02266	6"	8.1940	1	2



Combination Wye & 1/8 Bend Reducing • Two Piece

All Hub
Style #: A504



Item No.	Diameter	Each Wt.	Inner Qty.	Master Carton
02267	6" x 6" x 4"	4.7940	1	4



Double Combination Wye & 1/8 Bend

All Hub
Style #: A507



Item No.	Diameter	Each Wt.	Inner Qty.	Master Carton
02854	3"	2.6576	0	5



Wye
All Hub
Style #: A600



Item No.	Diameter	Each Wt.	Inner Qty.	Master Carton
02816	1-1/4"	0.2320	0	50
02822	1-1/2"	0.2920	0	50
02823	2"	0.4080	0	25
02824	3"	1.2800	0	25
02825	4"	2.1955	0	5
03135	6"	5.2810	1	4



Wye • Reducing

All Hub
Style #: A601



Item No.	Diameter	Each Wt.	Inner Qty.	Master Carton
02831	2" x 1-1/2" x 1-1/2"	0.3140	0	25
02832*	2" x 1-1/2" x 2"	0.4700	0	10
02826	2" x 2" x 1-1/2"	0.3820	0	25
02827	3" x 3" x 1-1/2"	0.7890	0	15
02828	3" x 3" x 2"	0.8725	0	25
02833	4" x 4" x 1-1/2"	1.1967	0	5
02829	4" x 4" x 2"	1.3625	0	10
02830	4" x 4" x 3"	1.7550	0	10
03137	6" x 6" x 4"	3.6320	1	5



Wye • Street

SP x H x H
Style #: A602



Item No.	Diameter	Each Wt.	Inner Qty.	Master Carton
03367	1-1/2"	0.2820	0	50
03368	2"	0.4050	0	30
03369	3"	1.2150	0	10
03370	4"	2.1525	0	5



Wye • Street • Reducing

SP x H x H
Style #: A603



Item No.	Diameter	Each Wt.	Inner Qty.	Master Carton
03372	3" x 3" x 1-1/2"	0.7590	0	20
03373	3" x 3" x 2"	0.8405	0	30
03374	4" x 4" x 2"	1.3470	0	10
03375	4" x 4" x 3"	1.7200	0	10



Wye • Cleanout

H x H x FPT
Style #: A604



Item No.	Diameter	Each Wt.	Inner Qty.	Master Carton
03019	1-1/2"	0.2850	0	20



Wye • Cleanout w/Cleanout Plug

H x H x FPT
Style #: A604X



Item No.	Diameter	Each Wt.	Inner Qty.	Master Carton
02809	1-1/2"	0.3437	0	20

*Not CSA recognized.

PLASTIC FITTINGS | ABS DWV FITTINGS



Wye • Double

All Hub
Style #: A611



Item No.	Diameter	Each Wt.	Inner Qty.	Master Carton
02838	1-1/2"	0.3480	0	40
02839	2"	0.5540	0	20
02840	3"	1.7480	0	10
02841	4"	2.8920	0	5



Wye • Double • Reducing

All Hub
Style #: A612



Item No.	Diameter	Each Wt.	Inner Qty.	Master Carton
02847	2" x 2" x 1-1/2" x 1-1/2"	0.4690	0	10
02843	3" x 3" x 1-1/2" x 1-1/2"	0.8940	0	10
02844	3" x 3" x 2" x 2"	1.0170	0	10
02845	4" x 4" x 2" x 2"	1.4620	0	5
02846	4" x 4" x 3" x 3"	2.4180	0	5
03142	6" x 6" x 4" x 4"	4.0800	1	3



Return Bend

H x H
Style #: A700



Item No.	Diameter	Each Wt.	Inner Qty.	Master Carton
03466	1-1/2"	0.2440	0	20
03467	2"	0.4430	0	35
03468	3"	1.3040	0	10
03469	4"	2.3060	0	5



Return Bend w/Cleanout

H x H
Style #: A701



Item No.	Diameter	Each Wt.	Inner Qty.	Master Carton
03471	1-1/2"	0.2630	0	20
03472	2"	0.4940	0	10



Adapter • Tail Piece w/Plastic Nut

SP x SJ
Style #: A704P



Item No.	Diameter	Each Wt.	Inner Qty.	Master Carton
02975	1-1/2" x 1-1/2"	0.1000	0	25
- OR -				
02975	1-1/2" x 1-1/4"	0.1000	0	25

(Furnished with both sizes SJ washers)



P-Trap • w/ Solvent Weld Joint

H x H
Style #: A706X



Item No.	Diameter	Each Wt.	Inner Qty.	Master Carton
02214	1-1/2"	0.3870	0	25
02222	2"	0.6550	0	20
02230	3"	1.9700	0	10
02231	4"	3.5970	0	4



P-Trap • w/Solvent Weld Joint & Cleanout

H x H
Style #: A707X



Item No.	Diameter	Each Wt.	Inner Qty.	Master Carton
02223	1-1/2"	0.3960	0	10
02224	2"	0.6510	0	10



P-Trap • w/Union

H x H
Style #: A708P



Item No.	Diameter	Each Wt.	Inner Qty.	Master Carton
02212*	1-1/4"	0.5195	0	50
02215	1-1/2"	0.4160	0	25
02216	2"	0.6910	0	20



P-Trap • Low Profile w/ Solvent Weld Joint

H x H
Style #: A710



Item No.	Diameter	Each Wt.	Inner Qty.	Master Carton
02225	2"	0.6420	0	20

*Not CSA recognized.



LA-Trap • w/Union & One-Piece Poly Nut

SJ x H
Style #: A711M



Item No.	Diameter	Each Wt.	Inner Qty.	Master Carton
02219	1-1/4" x 1-1/2"	0.5140	0	25
02221	1-1/2"	0.5140	0	25



Closet Flange • Knockout

H
Style #: A800KO



Item No.	Diameter	Each Wt.	Inner Qty.	Master Carton
02253	4"	0.5420	0	25
02254	4" x 3"	0.5500	0	25



LA P-Trap • w/Union & 1-1/2 & 1-1/4 SJ Washer Plastic Nut

SJ x H
Style #: A711P



Item No.	Diameter	Each Wt.	Inner Qty.	Master Carton
02220	1-1/4" x 1-1/2"	0.5140	0	25



Closet Flange • Spigot Reducing

SP
Style #: A801



Item No.	Diameter	Each Wt.	Inner Qty.	Master Carton
02919	4" x 3"	0.5320	0	25



Drum Trap • w/Cleanout

H x H
Style #: A720X



Item No.	Diameter	Each Wt.	Inner Qty.	Master Carton
03100	3" x 6" x 1-1/2"	1.2000	1	10



Closet Flange • w/Gusset

H
Style #: A802



Item No.	Diameter	Each Wt.	Inner Qty.	Master Carton
02262	4"	0.5120	0	25



Closet Flange

H
Style #: A800



Item No.	Diameter	Each Wt.	Inner Qty.	Master Carton
02902	4"	0.4730	0	25



Closet Flange • Female

FPT
Style #: A807



Item No.	Diameter	Each Wt.	Inner Qty.	Master Carton
02270	4" x 3"	0.4700	0	25



Closet Flange • w/Stop

H
Style #: A800S



Item No.	Diameter	Each Wt.	Inner Qty.	Master Carton
02903	4" x 3"	0.5680	0	25



Closet Flange • Male

MPT
Style #: A808



Item No.	Diameter	Each Wt.	Inner Qty.	Master Carton
02260	4" x 3"	0.5040	0	25

▶ PLASTIC FITTINGS | ABS DWV FITTINGS



Closet Flange • Adjustable w/Plastic Ring

H
Style #: A810



Item No.	Diameter	Each Wt.	Inner Qty.	Master Carton
02256	4"	0.4900	0	25



Closet Flange • Spigot Adjustable • w/ Plastic Ring

SP x H
Style #: A812P



Item No.	Diameter	Each Wt.	Inner Qty.	Master Carton
02252	4" x 3"	0.5596	0	25
02264	4"	0.5592	0	25



Closet Flange • w/Pipe Stop Adjustable • w/ Plastic Ring

H
Style #: A810S



Item No.	Diameter	Each Wt.	Inner Qty.	Master Carton
02251	4" x 3"	0.6019	0	25



Flush Closet Flange

SP x H
Style #: A815



Item No.	Diameter	Each Wt.	Inner Qty.	Master Carton
02255	4"	0.4800	0	25



Closet Flange • Adjustable w/ Metal Ring • Epoxy Coated

H
Style #: A811



Item No.	Diameter	Each Wt.	Inner Qty.	Master Carton
02226	4"	0.5960	0	25
02227	4" x 3"	0.7080	0	25



Offset Closet Flange Adjustable • w/ Metal Ring Epoxy Coated

H
Style #: A820



Item No.	Diameter	Each Wt.	Inner Qty.	Master Carton
02920	4" x 3"	0.8930	0	15



Closet Flange • Spigot Adjustable • w/ Metal Ring Epoxy Coated

SP
Style #: A812



Item No.	Diameter	Each Wt.	Inner Qty.	Master Carton
02229	4"	0.7040	0	25
02228	4" x 3"	0.6740	0	25



Swivel Tray Plug Adapter w/Washer

SP x NPSM Threaded



Item No.	Diameter	Each Wt.	Inner Qty.	Master Carton
03418	1-1/2"	0.0750	0	50



Swivel Tray Plug Adapter Extended Spigot • w/Washer

SP x NPSM Threaded
Style #: A900X



Item No.	Diameter	Each Wt.	Inner Qty.	Master Carton
03013	1-1/2"	0.0990	0	50
03420	1-1/4" x 1-1/2"	0.0870	0	50



Swivel Tray Plug Adapter w/Washer

HUB x NPSM Threaded
Style #: A910



Item No.	Diameter	Each Wt.	Inner Qty.	Master Carton
03421	1-1/2"	0.0850	0	50
03417	1-1/4" x 1-1/2"	0.0770	0	50



Nut • One-Piece Poly

SJ x NPSM Threaded
Style #: P142



Item No.	Diameter	Each Wt.	Inner Qty.	Master Carton
01036	1-1/4"	0.0214	0	150
01038	1-1/2"	0.0252	0	125

PVC DWV FITTINGS



Streamline® PVC DWV Fittings are manufactured to exact specifications to ensure the best fit in the industry. Each fitting delivers excellent rigidity and smooth interior walls to improve flow, inhibit scaling and provide superior resistance to chemicals and corrosion. Our stringent quality control protocols guarantee that our fittings fit and perform flawlessly, piece after piece. All fittings are packaged in standard industry carton quantities and dimensions, and utilize an intuitive, easily interpreted style numbering system.



- For use in non-pressurized drain, waste and vent sanitary systems
- Smooth, consistent interior walls provide for full flow and increased resistance to corrosion and scaling
- Superior resistance to chemicals and corrosion
- Uniform interior and exterior
- Made to applicable ASTM D2665, F1498, D331, D1784
- Meets NSF 14



Coupling

H x H
Style #: P100



Item No.	Diameter	Each Wt.	Inner Qty.	Master Carton
05932	1-1/4"	0.0810	0	100
05933	1-1/2"	0.0830	0	100
05934	2"	0.1130	0	100
05935	3"	0.4480	0	60
05936	4"	0.7970	0	25
06143	6"	2.1000	1	15
06145	8"	4.3350	1	6



Pipe Increaser/Reducer

H x H
Style #: P102



Item No.	Diameter	Each Wt.	Inner Qty.	Master Carton
05948	2" x 1-1/2"	0.1500	0	25
05949	3" x 1-1/2"	0.4130	0	25
05950	3" x 2"	0.3710	0	20
05951	4" x 2"	0.6790	0	10
05952	4" x 3"	0.7780	0	20
05981	6" x 4"	1.8920	1	5



Adapter • Female

FPT x H
Style #: P101



Item No.	Diameter	Each Wt.	Inner Qty.	Master Carton
05868	1-1/4"	0.0980	0	50
05866	1-1/2"	0.1020	0	100
05867	2"	0.1520	0	100
05869	3"	0.5000	0	30
06396	4"	0.7798	0	10
06147	6"	1.7780	1	10



Adapter • Trap Male w/One-Piece Poly Nut

SP x SJ
Style #: P103P



Item No.	Diameter	Each Wt.	Inner Qty.	Master Carton
06309	1-1/4"	0.0994	0	50
06393	1-1/2"	0.1040	0	50
06379	1-1/2" x 1-1/4"	0.1084	0	75



Adapter • Trap • Male w/Plastic Nut & 1-1/2 & 1-1/4 Washers

SP x SJ
Style #: P103R



Item No.	Diameter	Each Wt.	Inner Qty.	Master Carton
06389	1-1/2" x 1-1/4"	0.1200	0	50



Adapter • Trap • Female w/Chrome Nut & Washer

H x SJ
Style #: P104X



Item No.	Diameter	Each Wt.	Inner Qty.	Master Carton
06376	1-1/2"	0.1650	0	50
06397	2"	0.2420	0	25
06394	1-1/2" x 1-1/4"	0.1490	0	50



Adapter • Trap • Male w/Plastic Nut & Washer

SP x SJ
Style #: P103W



Item No.	Diameter	Each Wt.	Inner Qty.	Master Carton
06308	1-1/4"	0.1050	0	50
06410	1-1/2"	0.1130	0	50
06409	1-1/2" x 1-1/4"	0.1140	0	50
06390	2"	0.1680	0	25



Adapter • Cleanout

SP x FPT
Style #: P105



Item No.	Diameter	Each Wt.	Inner Qty.	Master Carton
05918	1-1/4"	0.1400	0	50
05922	1-1/2"	0.0860	0	50
05923	2"	0.1380	0	50
05924	3"	0.4460	0	25
05925	4"	0.6950	0	10
06148	6"	1.7570	1	10



Adapter • Trap • Male w/Chrome Nut & Washer

SP x SJ
Style #: P103X



Item No.	Diameter	Each Wt.	Inner Qty.	Master Carton
06392	1-1/2"	0.1580	0	50
06378	1-1/2" x 1-1/4"	0.1440	0	100



Adapter • Cleanout w/Cleanout Plug

SP x FPT
Style #: P105X



Item No.	Diameter	Each Wt.	Inner Qty.	Master Carton
06007	1-1/4"	0.1510	0	50
06001	1-1/2"	0.1520	0	50
06002	2"	0.2060	0	50
06003	3"	0.6640	0	25
06004	4"	1.0730	0	10
06005	6"	2.5950	1	10



Adapter • Trap • Female w/One-Piece Poly Nut

H x SJ
Style #: P104P



Item No.	Diameter	Each Wt.	Inner Qty.	Master Carton
06381	1-1/4"	0.1300	0	50
06377	1-1/2"	0.1110	0	50
06395	1-1/2" x 1-1/4"	0.1134	0	50



Plug • Cleanout

MPT
Style #: P106



Item No.	Diameter	Each Wt.	Inner Qty.	Master Carton
05937	1-1/4"	0.0650	0	100
05938	1-1/2"	0.0600	0	50
05939	2"	0.0870	0	50
05941	3"	0.2180	0	25
05942	4"	0.3780	0	30
06146	6"	0.7300	1	10



Adapter • Trap • Female w/Plastic Nut & Washer

H x SJ
Style #: P104W



Item No.	Diameter	Each Wt.	Inner Qty.	Master Carton
06380	1-1/4"	0.1300	0	50
06383	1-1/2"	0.1290	0	50
06384	1-1/2" x 1-1/4"	0.1190	0	50
06382	2"	0.1850	0	25

PLASTIC FITTINGS | PVC DWV FITTINGS



Plug • Slip
SP
Style #: P106P



Item No.	Diameter	Each Wt.	Inner Qty.	Master Carton
06055	1-1/2"	0.0350	0	25
06056	2"	0.0780	0	50



Plug • Flush Cleanout
MPT
Style #: P110



Item No.	Diameter	Each Wt.	Inner Qty.	Master Carton
06015	4"	0.3625	0	25
06017	2"	0.0850	0	25
06018	3"	0.2450	0	50



Bushing • Flush
SP x H
Style #: P107



Item No.	Diameter	Each Wt.	Inner Qty.	Master Carton
05904	1-1/2" x 1-1/4"	0.0330	0	100
05905	2" x 1-1/4"	0.1540	0	50
05906	2" x 1-1/2"	0.0820	0	50
05907	3" x 1-1/2"	0.2890	0	30
05908	3" x 2"	0.2950	0	30
05910	4" x 2"	0.5390	0	30
05909	4" x 3"	0.4440	0	30



Adapter • Male
SP x MPT
Style #: P111



Item No.	Diameter	Each Wt.	Inner Qty.	Master Carton
06010	1-1/4"	0.0720	0	50
06386	1-1/2"	0.0770	0	50
06385	2"	0.1530	0	25
06366	3"	0.3725	0	25
06387	1-1/2" x 1-1/4"	0.0990	0	100



Bushing • Flange w/Tube Stop
SP x H
Style #: P107S



Item No.	Diameter	Each Wt.	Inner Qty.	Master Carton
06144	6" x 4"	1.9160	1	10
06149	8" x 6"	4.2690	1	4



Adapter • Tray Plug
H x NPSM Thread
Style #: P113



Item No.	Diameter	Each Wt.	Inner Qty.	Master Carton
06014	1-1/2"	0.2010	0	50



Bushing • Flange w/Tube Stop
SP x FPT
Style #: P108



Item No.	Diameter	Each Wt.	Inner Qty.	Master Carton
05913	2" x 1-1/2"	0.1176	0	50



Adapter • Tray Plug • Spigot
SP x NPSM Thread
Style #: P113S



Item No.	Diameter	Each Wt.	Inner Qty.	Master Carton
06419	1-1/2"	0.1830	0	50



Adapter • Male
H x MPT
Style #: P109



Item No.	Diameter	Each Wt.	Inner Qty.	Master Carton
05931	1-1/4"	0.0840	0	50
05927	1-1/2"	0.0850	0	50
05928	2"	0.1180	0	50
05929	3"	0.3780	0	25
05930	4"	0.6070	0	25
05926	1-1/2" x 1-1/4"	0.0930	0	25



Cap • Threaded
FPT
Style #: P114



Item No.	Diameter	Each Wt.	Inner Qty.	Master Carton
05993	1-1/2"	0.0840	0	100
05994	2"	0.1220	0	50

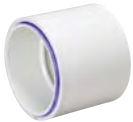


Cap • Socket

H
Style #: P116



Item No.	Diameter	Each Wt.	Inner Qty.	Master Carton
05977	1-1/2"	0.0840	0	50
05978	2"	0.1260	0	25
05979	3"	0.4460	0	25
05980	4"	0.6860	0	5
06057	6"	1.7550	1	5
06058	8"	4.3114	1	3



Coupling • Adapter

S/D H x DWV H
Style #: P117



Item No.	Diameter	Each Wt.	Inner Qty.	Master Carton
05970	3"	0.5970	0	10
05963	4"	0.8480	0	10
05962	4" x 3"	0.4420	0	20



Coupling • Adapter

S/D SP x DWV H
Style #: P117X



Item No.	Diameter	Each Wt.	Inner Qty.	Master Carton
05992	4" x 3"	0.4800	0	10



Bushing • Adapter (DWV Spigot x S/D Hub)

DWV SP x SD H
Style #: P118



Item No.	Diameter	Each Wt.	Inner Qty.	Master Carton
05990	3"	0.1140	0	25
05991	4"	0.1920	0	10



Adapter • No Hub

CI No H x DWV H
Style #: P119



Item No.	Diameter	Each Wt.	Inner Qty.	Master Carton
05802	1 1/2"	0.1320	0	25
05954	2"	0.1650	0	25
05955	3"	0.4100	0	20
05956	4"	0.7070	0	15
05953	4" x 3"	0.4400	0	10



Adapter • Schedule 40 to Schedule 30

H x H
Style #: P120



Item No.	Diameter	Each Wt.	Inner Qty.	Master Carton
05996	3"	0.4790	0	20



Adapter • Spigot Cast Iron

CI H x DWV H
Style #: P122



Item No.	Diameter	Each Wt.	Inner Qty.	Master Carton
05944	2"	0.3080	0	50
05946	4"	1.1260	0	10



Adapter • Hub • Cast Iron

CI SP x DWV H
Style #: P123



Item No.	Diameter	Each Wt.	Inner Qty.	Master Carton
05957	2"	0.3110	0	20
05958	3"	0.7410	0	20
05959	4"	1.1320	0	20



Adapter • Hub Cast Iron • Increaser

CI SP x DWV H
Style #: A123R



Item No.	Diameter	Each Wt.	Inner Qty.	Master Carton
05961	2" x 1-1/2"	0.2790	0	10
05964	3" x 1-1/2"	0.4560	0	10
06398	3" x 2"	0.5160	0	20
05960	4" x 3"	1.0390	0	10



Coupling • Repair

H x H
Style #: P130



Item No.	Diameter	Each Wt.	Inner Qty.	Master Carton
05965	1-1/2"	0.0880	0	20
05966	2"	0.1100	0	25
05967	3"	0.4320	0	10
05968	4"	0.6970	0	5
05969	6"	2.2200	0	5

PLASTIC FITTINGS | PVC DWV FITTINGS



Nut • Slip Joint • Plastic

NPSM Thread
Style #: P140



Item No.	Diameter	Each Wt.	Inner Qty.	Master Carton
05743	1-1/4"	0.0370	0	400
05744	1-1/2"	0.0410	0	100
05741	2"	0.0570	0	100



Nut • One-Piece Poly

NPSM Thread
Style #: P142



Item No.	Diameter	Each Wt.	Inner Qty.	Master Carton
01036	1-1/4"	0.0214	0	150
01038	1-1/2"	0.0252	0	125



Elbow • 1/4 Bend

H x H
Style #: P300



Item No.	Diameter	Each Wt.	Inner Qty.	Master Carton
05875	1-1/4"	0.1680	0	50
05876	1-1/2"	0.2200	0	100
05877	2"	0.3300	0	50
05878	3"	0.9730	0	25
05879	4"	1.8430	0	10
06130	6"	5.0000	1	5
06131	8"	4.8300	1	2



Elbow • 1/4 Bend • Reducing

H x H
Style #: P300R



Item No.	Diameter	Each Wt.	Inner Qty.	Master Carton
06092	2" x 1-1/2"	0.3050	0	10



Elbow • 1/4 Bend w/Side Inlet

All Hub
Style #: P300S



Item No.	Diameter	Each Wt.	Inner Qty.	Master Carton
06069	3" x 3" x 1-1/2"	1.0900	0	10
06070	3" x 3" x 2"	1.0880	0	10



Elbow • 1/4 Bend • Street

SP x H
Style #: P302



Item No.	Diameter	Each Wt.	Inner Qty.	Master Carton
05894	1-1/4"	0.1680	0	50
05880	1-1/2"	0.2000	0	100
05881	2"	0.3120	0	50
05882	3"	0.9530	0	20
05883	4"	1.6810	0	10
05889	6"	4.6480	1	5



Elbow • 1/4 Bend w/Low Heel Inlet

All Hub
Style #: P303



Item No.	Diameter	Each Wt.	Inner Qty.	Master Carton
06041	3" x 3" x 1-1/2"	1.0940	0	25
06042	3" x 3" x 2"	1.0700	0	25
06043	4" x 4" x 2"	1.8500	0	15



Elbow • Long Sweep 1/4 Bend

All Hub
Style #: P304



Item No.	Diameter	Each Wt.	Inner Qty.	Master Carton
05871	1-1/2"	0.2800	0	50
05872	2"	0.4380	0	25
05873	3"	1.1550	0	10
05874	4"	2.1920	0	5



Elbow • Long Sweep 1/4 Bend • Street

H x H
Style #: P309



Item No.	Diameter	Each Wt.	Inner Qty.	Master Carton
06060	1-1/2"	0.1960	0	50
06061	2"	0.3360	0	25
06063	3"	1.1980	0	500
06064	4"	1.7080	0	10



Elbow • Long Sweep 1/4 Bend w/High Heel Inlet

All Hub
Style #: P305



Item No.	Diameter	Each Wt.	Inner Qty.	Master Carton
06028	3" x 3" x 1-1/2"	1.2750	0	10
06027	3" x 3" x 2"	1.2890	0	25



Elbow • 1/4 Bend • Street w/Low Heel Inlet

All Hub
Style #: P310



Item No.	Diameter	Each Wt.	Inner Qty.	Master Carton
06026	3" x 3" x 2"	1.0980	0	15



Elbow • Long Sweep 1/4 Bend • w/Side Inlet

All Hub
Style #: P311



Item No.	Diameter	Each Wt.	Inner Qty.	Master Carton
06050	3" x 3" x 2"	1.2840	0	25



Elbow • Long Sweep 1/4 Bend • w/Low Heel Inlet

All Hub
Style #: P307



Item No.	Diameter	Each Wt.	Inner Qty.	Master Carton
06025	3" x 3" x 1-1/2"	1.2940	0	10
06024	3" x 3" x 2"	1.3310	0	25



Elbow • 1/6 Bend

H x H
Style #: P319



Item No.	Diameter	Each Wt.	Inner Qty.	Master Carton
05895	1-1/2"	0.1850	0	40
05896	2"	0.2920	0	25
05897	3"	0.8570	0	20
05982	4"	1.4480	0	10



Elbow • 1/6 Bend • Street

SP x H
Style #: P320



Item No.	Diameter	Each Wt.	Inner Qty.	Master Carton
06020	1-1/2"	0.1680	0	40
06021	2"	0.2660	0	25
06022	3"	0.7980	0	20
06023	4"	1.5400	0	5



Elbow • 1/8 Bend

H x H
Style #: P321



Item No.	Diameter	Each Wt.	Inner Qty.	Master Carton
05884	1-1/4"	0.1460	0	50
05885	1-1/2"	0.1840	0	100
05886	2"	0.3020	0	50
05887	3"	0.8190	0	20
05888	4"	1.4840	0	10
06132	6"	3.1960	1	3
06134	8"	7.5200	1	1



Elbow • 1/8 Bend • Street

SP x H
Style #: P323



Item No.	Diameter	Each Wt.	Inner Qty.	Master Carton
06016	1-1/4"	0.1400	0	50
05890	1-1/2"	0.1860	0	100
05891	2"	0.2810	0	50
05892	3"	0.7750	0	20
05893	4"	1.3870	0	10
06133	6"	4.0280	1	3
06136	8"	8.4000	1	1



Elbow • 1/16 Bend

H x H
Style #: P324



Item No.	Diameter	Each Wt.	Inner Qty.	Master Carton
05899	1-1/2"	0.1390	0	50
05900	2"	0.2170	0	25
05901	3"	0.6070	0	20
05983	4"	1.0950	0	15
05988	6"	3.0750	1	3



Elbow • 1/16 Bend • Street

SP x H
Style #: P326



Item No.	Diameter	Each Wt.	Inner Qty.	Master Carton
05984	1-1/2"	0.1230	0	50
05985	2"	0.2050	0	25
05986	3"	0.5620	0	20
05987	4"	1.0300	0	10
06011	6"	3.0850	0	5

PLASTIC FITTINGS | PVC DWV FITTINGS



Elbow • Double • 1/4 Bend

All Hub
Style #: P327



Item No.	Diameter	Each Wt.	Inner Qty.	Master Carton
06045	1-1/2"	0.3590	0	20
06046	2"	0.5270	0	25
06047	3"	1.5200	0	10
06048	4"	2.6500	0	6
06049	2" x 1-1/2" x 1-1/2"	0.5160	0	25



Elbow • Vent • Street

SP x H
Style #: P333



Item No.	Diameter	Each Wt.	Inner Qty.	Master Carton
06088	1-1/2"	0.1770	0	25
06089	2"	0.2730	0	20
06090	3"	0.9160	0	10



Elbow • Closet Bend • Reducing

H x H
Style #: P329



Item No.	Diameter	Each Wt.	Inner Qty.	Master Carton
06093	4" x 3"	1.4120	0	10



Tee • Sanitary

All Hub
Style #: P400



Item No.	Diameter	Each Wt.	Inner Qty.	Master Carton
05751	1-1/4"	0.2380	0	50
05752	1-1/2"	0.2970	0	100
05753	2"	0.4980	0	35
05754	3"	1.3370	0	30
05755	4"	2.4490	0	5
05756	6"	6.1000	1	5
05775	8"	11.7000	1	2



Elbow • Closet Bend Reducing • Street

SP x H
Style #: P330



Item No.	Diameter	Each Wt.	Inner Qty.	Master Carton
06107	4" x 3"	1.4870	0	10



Tee • Sanitary • Reducing

All Hub
Style #: P401



Item No.	Diameter	Each Wt.	Inner Qty.	Master Carton
05757	1-1/2" x 1-1/2" x 1-1/4"	0.2660	0	20
05761	2" x 1-1/2" x 1-1/2"	0.3890	0	25
05760	2" x 1-1/2" x 2"	0.4650	0	25
05758	2" x 2" x 1-1/2"	0.4090	0	50
05764	3" x 3" x 1-1/2"	0.8190	0	20
05763	3" x 3" x 2"	0.9260	0	10
05767	4" x 4" x 1-1/2"	1.5730	0	5
05765	4" x 4" x 2"	1.4500	0	10
05766	4" x 4" x 3"	1.9470	0	10
05768	6" x 6" x 4"	4.2840	1	6



Elbow • Closet Bend • Reducing Street • w/Test Cap

SP x H
Style #: P330X



Item No.	Diameter	Each Wt.	Inner Qty.	Master Carton
06108	4" x 3"	1.6000	0	10



Elbow • Vent

H x H
Style #: P331



Item No.	Diameter	Each Wt.	Inner Qty.	Master Carton
06084	1-1/2"	0.2010	0	20
06085	2"	0.2900	0	30
06086	3"	0.7910	0	25



Tee • Sanitary • Street

SP x H x H
Style #: P403



Item No.	Diameter	Each Wt.	Inner Qty.	Master Carton
06112	1-1/2"	0.2860	0	20
06113	2"	0.4630	0	25
06114	3"	1.2850	0	30
06120	4"	2.3430	0	10



Tee • Sanitary • Street Reducing

SP x H x H
Style #: P404



Item No.	Diameter	Each Wt.	Inner Qty.	Master Carton
06115	2" x 1-1/2" x 1-1/2"	0.3750	0	25
06116	2" x 1-1/2" x 2"	0.4550	0	25
06117	2" x 2" x 1-1/2"	0.3890	0	50
06118	3" x 3" x 1-1/2"	0.7670	0	10
06119	3" x 3" x 2"	0.8830	0	20
06121	4" x 4" x 2"	2.4080	0	5



Tee • Sanitary • Double

All Hub
Style #: P428



Item No.	Diameter	Each Wt.	Inner Qty.	Master Carton
05812	1-1/2"	0.4060	0	25
05813	2"	0.5960	0	20
05814	3"	1.7110	0	20
05815	4"	3.0570	0	4



Tee • Sanitary w/Left Side Inlet

All Hub
Style #: P416



Item No.	Diameter	Each Wt.	Inner Qty.	Master Carton
05781	3" x 3" x 3" x 1-1/2"	1.4600	0	10
05782	3" x 3" x 3" x 2"	1.5870	0	10
05784	4" x 4" x 4" x 2"	2.6100	0	5



Tee • Sanitary • Double Reducing

All Hub
Style #: P429



Item No.	Diameter	Each Wt.	Inner Qty.	Master Carton
05817	2" x 2" x 1-1/2" x 1-1/2"	0.4820	0	20
05818	3" x 3" x 1-1/2" x 1-1/2"	0.8570	0	20
05820	3" x 3" x 2" x 2"	1.0810	0	10
05240	4" x 4" x 2" x 2"	1.4850	0	5
05821	4" x 4" x 3" x 3"	2.2650	0	5



Tee • Sanitary w/Right Side Inlet

All Hub
Style #: P417



Item No.	Diameter	Each Wt.	Inner Qty.	Master Carton
05795	3" x 3" x 3" x 1-1/2"	1.4600	0	10
05796	3" x 3" x 3" x 2"	1.6040	0	10
05797	4" x 4" x 4" x 2"	2.5400	0	5



Tee • Sanitary • Double Street • Reducing

SP x H x H x H
Style #: P431



Item No.	Diameter	Each Wt.	Inner Qty.	Master Carton
06310	3" x 3" x 2" x 2"	0.7440	0	10



Tee • Sanitary • Double w/Right & Left Side Inlet

All Hub
Style #: P418



Item No.	Diameter	Each Wt.	Inner Qty.	Master Carton
05810	3" x 3" x 3" x 1-1/2" x 1-1/2"	1.6100	0	10
05811	3" x 3" x 3" x 2" x 2"	1.7960	0	5
05805	4" x 4" x 4" x 1-1/2" x 1-1/2"	2.9429	0	5
05808	4" x 4" x 4" x 2" x 2"	2.7800	0	5



Tee • Sanitary • Double w/Side Inlet

All Hub
Style #: P438



Item No.	Diameter	Each Wt.	Inner Qty.	Master Carton
05772	3" x 3" x 3" x 3" x 2"	2.0860	0	10



Tee • Sanitary • Double w/Right & Left Side Inlet

All Hub
Style #: P439



Item No.	Diameter	Each Wt.	Inner Qty.	Master Carton
05770	3" x 3" x 3" x 3" x 2" x 2"	2.2210	0	10

PLASTIC FITTINGS | PVC DWV FITTINGS



Tee • Vent

All Hub
Style #: P441



Item No.	Diameter	Each Wt.	Inner Qty.	Master Carton
06403	1-1/2"	0.2700	0	25
06404	2"	0.3740	0	25
06405	3"	1.2330	0	10
06406	4"	1.9010	0	5



Tee • Two Way • Cleanout

All Hub
Style #: P448



Item No.	Diameter	Each Wt.	Inner Qty.	Master Carton
05237	3"	1.9610	0	10
05238	4"	3.4290	0	5



Tee • Cleanout w/Cleanout Plug

H x H FPT
Style #: P444X



Item No.	Diameter	Each Wt.	Inner Qty.	Master Carton
05997	1-1/2"	0.4020	0	10
05998	2"	0.4870	0	10
05999	3"	1.2160	0	10
06000	4"	2.2190	0	5



Tee • Double Fixture

All Hub
Style #: P500



Item No.	Diameter	Each Wt.	Inner Qty.	Master Carton
05246	2"	0.8260	0	25
05249	3"	2.6300	0	5
05247	2" x 1-1/2" x 1-1/2" x 1-1/2"	0.5640	0	20
05244	2" x 2" x 1-1/2" x 1-1/2"	0.6420	0	20
05250	3" x 2" x 3" x 3"	3.0000	0	5



Tee • Flush Cleanout

H x H x FPT
Style #: P445



Item No.	Diameter	Each Wt.	Inner Qty.	Master Carton
06413	1-1/2"	0.2800	0	20
06414	2"	0.3360	0	20
06415	3"	1.0130	0	10
06416	4"	1.8640	0	10



Wye • Combination 1/8 Bend • One Piece

All Hub
Style #: P501



Item No.	Diameter	Each Wt.	Inner Qty.	Master Carton
05853	1-1/2"	0.5000	0	50
05858	2"	0.7040	0	20
05852	3"	2.2010	0	10
05860	4"	4.1720	0	10



Tee • Flush Cleanout w/Flush Cleanout Plug

H x H x FPT
Style #: P445X



Item No.	Diameter	Each Wt.	Inner Qty.	Master Carton
05198	2"	0.4600	0	10
05199	3"	1.3200	0	10
05200	4"	2.5240	0	5



Wye • Combination • 1/8 Bend Reducing • One Piece

All Hub
Style #: P502



Item No.	Diameter	Each Wt.	Inner Qty.	Master Carton
05835	2" x 1-1/2" x 1-1/2"	0.2420	0	5
05836	2" x 1-1/2" x 2"	0.7280	0	5
05865	2" x 2" x 1-1/2"	0.5360	0	20
05837	3" x 3" x 1-1/2"	1.0400	0	15
05857	3" x 3" x 2"	1.2420	0	10
05863	4" x 4" x 2"	1.7990	0	5
05864	4" x 4" x 3"	2.8290	0	5



Tee • Horizontal Twin

All Hub
Style #: P447



Item No.	Diameter	Each Wt.	Inner Qty.	Master Carton
05235	3" x 3" x 1-1/2" x 1-1/2"	0.8970	0	5



Wye • Combination 1/8 Bend • Two Piece

All Hub
Style #: P503



Item No.	Diameter	Each Wt.	Inner Qty.	Master Carton
05266	6"	11.3170	1	2



Wye • Combination • 1/8 Bend Reducing • Two Piece

All Hub
Style #: P504



Item No.	Diameter	Each Wt.	Inner Qty.	Master Carton
05267	6" x 6" x 4"	6.5870	1	4
05271	6" x 6" x 3"	6.5470	0	5



Wye • Combination • 1/8 Bend Double • Assembly

All Hub
Style #: P507



Item No.	Diameter	Each Wt.	Inner Qty.	Master Carton
06032	3"	2.7990	0	10
06033	4"	6.9650	0	4
06034	2" x 1 1/2"	1.8630	0	10
06035	3" x 2"	7.1000	0	10
06036	4" x 2"	2.6900	0	5
06037	4" x 3"	9.4500	0	5



Wye • Combination • 1/8 Bend w/Left Side Inlet

All Hub
Style #: P515



Item No.	Diameter	Each Wt.	Inner Qty.	Master Carton
06009	3" x 3" x 3" x 2"	2.6410	0	10



Wye • Combination • 1/8 Bend w/Right Side Inlet

All Hub
Style #: P516



Item No.	Diameter	Each Wt.	Inner Qty.	Master Carton
06008	3" x 3" x 3" x 2"	2.6410	0	10



Wye

All Hub
Style #: P600



Item No.	Diameter	Each Wt.	Inner Qty.	Master Carton
05816	1-1/4"	0.3080	0	50
05822	1-1/2"	0.3910	0	50
05823	2"	0.5950	0	25
05824	3"	1.7110	0	25
05825	4"	3.1030	0	5
06135	6"	7.3030	1	4
06139	8"	14.7000	0	1



Wye • Reducing

All Hub
Style #: P601



Item No.	Diameter	Each Wt.	Inner Qty.	Master Carton
05831	2" x 1-1/2" x 1-1/2"	0.4190	0	25
05832	2" x 1-1/2" x 2"	0.6580	0	10
05826	2" x 2" x 1-1/2"	0.4970	0	25
05827	3" x 3" x 1-1/2"	1.0620	0	15
05828	3" x 3" x 2"	1.1660	0	25
05833	4" x 4" x 1-1/2"	1.9640	0	5
05829	4" x 4" x 2"	1.8430	0	10
05830	4" x 4" x 3"	2.4190	0	10
06138	6" x 6" x 3"	5.0120	1	5
06137	6" x 6" x 4"	4.9960	1	5
05834	8" x 8" x 6"	10.7200	0	1



Wye • Street

SP x H x H
Style #: P602



Item No.	Diameter	Each Wt.	Inner Qty.	Master Carton
06367	1-1/2"	0.3760	0	50
06368	2"	0.5640	0	30
06369	3"	1.6630	0	10
06370	4"	2.9750	0	5



Wye • Street • Reducing

SP x H x H
Style #: P603



Item No.	Diameter	Each Wt.	Inner Qty.	Master Carton
06372	3" x 3" x 1-1/2"	1.1190	0	20
06373	3" x 3" x 2"	1.1140	0	30
06374	4" x 4" x 2"	1.8110	0	10
06375	4" x 4" x 3"	2.4230	0	10

PLASTIC FITTINGS | PVC DWV FITTINGS



Wye • Double

All Hub
Style #: P611



Item No.	Diameter	Each Wt.	Inner Qty.	Master Carton
05838	1-1/2"	0.4590	0	40
05839	2"	0.7770	0	20
05840	3"	2.1160	0	10
05841	4"	3.9420	0	5
05842	6"	4.9980	1	2



Wye • w/Right Side Inlet

All Hub
Style #: P626



Item No.	Diameter	Each Wt.	Inner Qty.	Master Carton
06156	3" x 3" x 3" x 2"	1.7000	0	5
06158	4" x 4" x 4" x 2"	3.0820	0	5



Wye • Double • w/Side Inlet

All Hub
Style #: P611S



Item No.	Diameter	Each Wt.	Inner Qty.	Master Carton
05849	3" x 3" x 3" x 3" x 2"	2.1500	0	10
06159	4" x 4" x 4" x 4" x 2"	3.8480	0	5



Return Bend

H x H
Style #: P700



Item No.	Diameter	Each Wt.	Inner Qty.	Master Carton
06466	1-1/2"	0.3360	0	20
06467	2"	0.6010	0	35
06468	3"	1.7670	0	10
06469	4"	3.1230	0	5



Wye • Double • Reducing

All Hub
Style #: P612



Item No.	Diameter	Each Wt.	Inner Qty.	Master Carton
05847	2" x 2" x 1-1/2" x 1-1/2"	0.6140	0	10
05843	3" x 3" x 1-1/2" x 1-1/2"	1.1300	0	10
05844	3" x 3" x 2" x 2"	1.3770	0	10
05845	4" x 4" x 2" x 2"	2.0360	0	5
05846	4" x 4" x 3" x 3"	2.2530	0	5
06142	6" x 6" x 4" x 4"	5.7080	1	3



Return Bend • w/Cleanout

H x H
Style #: P701



Item No.	Diameter	Each Wt.	Inner Qty.	Master Carton
06471	1-1/2"	0.3620	0	20
06472	2"	0.6740	0	10



Wye • w/Left Side Inlet

All Hub
Style #: P625



Item No.	Diameter	Each Wt.	Inner Qty.	Master Carton
06155	3" x 3" x 3" x 2"	1.7000	0	5
06157	4" x 4" x 4" x 2"	3.0820	0	5



Adapter • Tail Piece w/Plastic Nut

SP x SJ
Style #: P704P



Item No.	Diameter	Each Wt.	Inner Qty.	Master Carton
05975	1-1/2" x 1-1/2"	0.1310	0	25
- OR -				
05975	1-1/2" x 1-1/4"	0.1310	0	25

(Furnished with both size SJ washers)



P-Trap • w/Solvent Weld Joint

H x H
Style #: P706X



Item No.	Diameter	Each Wt.	Inner Qty.	Master Carton
05214	1-1/2"	0.5130	0	25
05222	2"	0.8650	0	20
05230	3"	2.7520	0	10
05231	4"	4.9330	0	4



P-Trap • w/Solvent Weld Joint & Cleanout

H x H
Style #: P707X



Item No.	Diameter	Each Wt.	Inner Qty.	Master Carton
05223	1-1/2"	0.5530	0	10
05224	2"	0.8760	0	10



P-Trap • w/Union

H x H
Style #: P708P



Item No.	Diameter	Each Wt.	Inner Qty.	Master Carton
05215	1-1/2"	0.5710	0	25
05216	2"	0.9440	0	20



P-Trap • Low Profile w/Solvent Weld Joint

H x H
Style #: P710



Item No.	Diameter	Each Wt.	Inner Qty.	Master Carton
05225	2"	0.8650	0	20



LA Trap • w/Union & 1-1/2 & 1-1/4 SJ Washers • Plastic Nut

SJx H
Style #: P711P



Item No.	Diameter	Each Wt.	Inner Qty.	Master Carton
05220	1-1/4" x 1-1/2"	0.7110	0	25



Drum Trap • w/Cleanout

H x H
Style #: P720X



Item No.	Diameter	Each Wt.	Inner Qty.	Master Carton
06100	1-1/2" x 3" x 6"	1.2900	1	10



Closet Flange

H
Style #: P800



Item No.	Diameter	Each Wt.	Inner Qty.	Master Carton
05902	4"	0.6350	0	25



Closet Flange • Knockout

H
Style #: P800KO



Item No.	Diameter	Each Wt.	Inner Qty.	Master Carton
05253	4"	0.7250	0	25
05254	4" x 3"	0.7630	0	25



Closet Flange • w/Stop

H
Style #: P800S



Item No.	Diameter	Each Wt.	Inner Qty.	Master Carton
05903	4" x 3"	0.7640	0	25



Closet Flange • Spigot Reducing

SP
Style #: P801



Item No.	Diameter	Each Wt.	Inner Qty.	Master Carton
05919	4" x 3"	0.7100	0	25

▶ PLASTIC FITTINGS | PVC DWV FITTINGS



Closet Flange • Adjustable w/Plastic Ring

H
Style #: P810   

Item No.	Diameter	Each Wt.	Inner Qty.	Master Carton
05256	4"	0.6650	0	25



Closet Flange • Spigot Adjustable • w/Plastic Ring

SP
Style #: P812P   

Item No.	Diameter	Each Wt.	Inner Qty.	Master Carton
05252	4" x 3"	0.7210	0	25
05264	4"	0.6970	0	25



Closet Flange • w/Pipe Stop Adjustable • w/Plastic Ring

H
Style #: P810S   

Item No.	Diameter	Each Wt.	Inner Qty.	Master Carton
05251	3" x 4"	0.7900	0	25



Closet Flange • Flush

SP x H
Style #: P815   

Item No.	Diameter	Each Wt.	Inner Qty.	Master Carton
05255	4" x 4" x 4" x 3"	0.6500	0	25



Closet Flange • Adjustable w/Metal Ring • Epoxy Coated

H
Style #: P811   

Item No.	Diameter	Each Wt.	Inner Qty.	Master Carton
05226	4"	0.7030	0	25
05227	4" x 3"	0.8270	0	25



Closet Flange • Flush Knockout

SP x H
Style #: P815KO   

Item No.	Diameter	Each Wt.	Inner Qty.	Master Carton
05257	4" x 4" x 4" x 3"	0.6190	0	25



Closet Flange • Spigot Adjustable • w/Metal Ring Epoxy Coated

SP
Style #: P812   

Item No.	Diameter	Each Wt.	Inner Qty.	Master Carton
05228	4" x 3"	0.7630	0	25
05229	4"	0.8130	0	25



Closet Flange • Offset Adjustable • w/Metal Ring Epoxy Coated

H
Style #: P820   

Item No.	Diameter	Each Wt.	Inner Qty.	Master Carton
05920	4" x 3"	1.1400	0	15

PVC SEWER FITTINGS



Streamline® PVC Sewer Fittings are built and subjected to the similar rigorous testing and dimensioning that we use on our pressure and DWV fitting lines. Designed to withstand the conditions of burial, these fittings are extra strong, to resist crushing, and consistently sized for fast, precision assembly. Our manufacturing processes allow for absolute protection against leaks.



- Use in roof and ground drainage and sewer applications
- Built with virgin materials
- Extra strong to resist crushing
- Consistently sized for fast, precision assembly
- Corrosion and chemical resistant
- Smooth inner walls provide for free flow
- 4" fittings made to applicable ASTM standards D3034, D1784. All other sizes made to D2729, D1784



Adapter
S/D H x C.I. Hub



Item No.	Diameter	Each Wt.	Inner Qty.	Master Carton
03331	4"	0.8200	0	24



Adapter
S/D H x Clay SP



Item No.	Diameter	Each Wt.	Inner Qty.	Master Carton
03334	4"	0.3870	0	15



Adapter
S/D H x C.I. SP



Item No.	Diameter	Each Wt.	Inner Qty.	Master Carton
03332	4"	0.2320	0	25



Bushing • Adapter Sleeve
DWV SP x S/D Hub



Item No.	Diameter	Each Wt.	Inner Qty.	Master Carton
03245	3"	0.1200	0	25



Adapter
S/D H x Clay H



Item No.	Diameter	Each Wt.	Inner Qty.	Master Carton
03333	4"	0.9990	0	15



Bushing • Extended
S/D SPG x DWV H



Item No.	Diameter	Each Wt.	Inner Qty.	Master Carton
03291	6" x 4"	1.0200	1	12

▶ PLASTIC FITTINGS | PVC SEWER & DRAIN FITTINGS



Bushing • Extended
S/D SPG x S/D Hub

MADE IN USA

Item No.	Diameter	Each Wt.	Inner Qty.	Master Carton
03325	6" x 4"	0.4800	1	24



Pipe Cleanout Adapter
H x FPT

MADE IN USA

Item No.	Diameter	Each Wt.	Inner Qty.	Master Carton
03348	4"	0.3750	0	24
03299	6"	0.9100	1	12



Bushing • Reducer Extended
SP x H

MADE IN USA

Item No.	Diameter	Each Wt.	Inner Qty.	Master Carton
03223	3" x 1-1/2"	0.1000	0	25
03230	4" x 2"	0.2400	0	25



Cap
Hub

MADE IN USA

Item No.	Diameter	Each Wt.	Inner Qty.	Master Carton
03353	3"	0.1860	0	20
03329	4"	0.3150	0	10
03330	6"	0.8800	1	30
03284	8"	2.3200	1	15



Bushing • Reducer
S/D SP x DWV Hub

MADE IN USA

Item No.	Diameter	Each Wt.	Inner Qty.	Master Carton
03222	4" x 1-1/2"	0.2000	0	25



Coupling
H x H

MADE IN USA

Item No.	Diameter	Each Wt.	Inner Qty.	Master Carton
03349	3"	0.2140	0	20
03326	4"	0.3620	0	25
03327	6"	1.2600	1	24
03282	8"	4.0300	1	2



90° Elbow • Street Short Turn
SP x H

MADE IN USA

Item No.	Diameter	Each Wt.	Inner Qty.	Master Carton
03306	3"	0.3570	0	25
03307	4"	0.6400	0	25
03344	6"	2.2400	1	12



Coupling • Reducer
H x H

MADE IN USA

Item No.	Diameter	Each Wt.	Inner Qty.	Master Carton
03358	4" x 3"	0.3790	0	20
03328	6" x 4"	1.1300	1	24
03290	8" x 4"	2.6500	1	4
03289	8" x 6"	3.3500	1	4



Fitting Cleanout Adapter
SP x FPT

MADE IN USA

Item No.	Diameter	Each Wt.	Inner Qty.	Master Carton
03336	3"	0.2240	0	40
03337	4"	0.3860	0	20
03297	6"	0.8900	1	12



Cross
All Hub

MADE IN USA

Item No.	Diameter	Each Wt.	Inner Qty.	Master Carton
03346	4"	1.1100	0	24



Down Spout Adapter
DS x H

MADE IN USA

Item No.	Diameter	Each Wt.	Inner Qty.	Master Carton
03356	2" x 3" x 3"	0.2840	0	20
03357	2" x 3" x 4"	0.4400	0	10
03294	3" x 4" x 4"	0.3600	1	25



**Down Spout Adapter
Extended • Offset**
DS x H

MADE IN USA

Item No.	Diameter	Each Wt.	Inner Qty.	Master Carton
03295	4" x 6" x 6"	1.1100	1	15



Drain Grate
SP

MADE IN USA

Item No.	Diameter	Each Wt.	Inner Qty.	Master Carton
03354	3"	0.1890	0	30
03355	4"	0.3520	0	40
03296	6"	1.0600	1	30



Plug
MPT

MADE IN USA

Item No.	Diameter	Each Wt.	Inner Qty.	Master Carton
03338	3"	0.1970	0	20
03339	4"	0.3550	0	40
03298	6"	0.5700	1	24



Sanitary Tee
All Hub

MADE IN USA

Item No.	Diameter	Each Wt.	Inner Qty.	Master Carton
03352	3"	0.7280	0	24
03335	4"	1.1700	0	10
03362	6"	3.1800	1	6
03285	8"	13.5100	1	1



Tee
All Hub

MADE IN USA

Item No.	Diameter	Each Wt.	Inner Qty.	Master Carton
03359	3"	0.5760	0	30
03311	4"	0.9820	0	15
03312	6"	3.1200	1	8
03313	6" x 6" x 4"	2.6000	1	8
03286	8"	9.4000	1	1



22-1/2° Elbow • 1/16 Bend
H x H

MADE IN USA

Item No.	Diameter	Each Wt.	Inner Qty.	Master Carton
03320	4"	0.4880	0	10
03321	6"	1.2400	1	20
03288	8"	5.4900	1	1



**22-1/2° Elbow • Street
1/16 Bend**
H x H

MADE IN USA

Item No.	Diameter	Each Wt.	Inner Qty.	Master Carton
03350	4"	0.4800	0	30
03351	6"	1.2100	1	20



45° Elbow • 1/8 Bend
H x H

MADE IN USA

Item No.	Diameter	Each Wt.	Inner Qty.	Master Carton
03317	3"	0.3620	0	20
03318	4"	0.5670	0	20
03319	6"	1.8500	1	18
03283	8"	4.3200	1	2

▶ PLASTIC FITTINGS | PVC SEWER & DRAIN FITTINGS



45° Elbow • Street • 1/8 Bend
H x H

MADE IN
USA

Item No.	Diameter	Each Wt.	Inner Qty.	Master Carton
03340	3"	0.3360	0	30
03341	4"	0.5470	0	20
03345	6"	1.1800	1	18



**90° Elbow • Street • Long Turn
1/4 Bend**
SP x H

MADE IN
USA

Item No.	Diameter	Each Wt.	Inner Qty.	Master Carton
03342	3"	0.4780	0	25
03343	4"	0.8160	0	15
03293	6"	1.9600	1	8



**90° Elbow • Long Turn
1/4 Bend**
H x H

MADE IN
USA

Item No.	Diameter	Each Wt.	Inner Qty.	Master Carton
03314	3"	0.5030	0	25
03315	4"	0.8500	0	15
03292	6"	2.6100	1	8



2-Way Cleanout
All Hub

MADE IN
USA

Item No.	Diameter	Each Wt.	Inner Qty.	Master Carton
03361	4"	1.2500	0	10



**90° Elbow • Short Turn
1/4 Bend**
H x H

MADE IN
USA

Item No.	Diameter	Each Wt.	Inner Qty.	Master Carton
03301	3"	0.3680	0	25
03302	4"	0.6360	0	25
03316	6"	2.3400	1	12
03281	8"	5.4400	1	2



45° Wye
All Hub

MADE IN
USA

Item No.	Diameter	Each Wt.	Inner Qty.	Master Carton
03360	3"	0.8020	0	25
03322	4"	1.2000	0	10
03323	6"	4.1300	1	6
03324	6" x 6" x 4"	3.3300	1	8
03287	8"	12.7600	1	1

STYRENE SEWER FITTINGS



Streamline® Styrene Sewer Fittings are manufactured with the extra steps necessary to deliver the strongest, most reliable sewer fittings available. Subjected to the similar rigorous testing and dimensioning that we use on our pressure and DWV fitting lines, our fittings are built extra strong for reliability and leak-proof performance above and underground.



- Use in roof and ground drainage and sewer applications
- Made with white impact virgin styrene
- High-strength material
- Smooth inner walls provide for free flow
- Suitable for use above and underground
- Corrosion and chemical resistant
- Made to ASTM D2852



22-1/2° Elbow • 1/16 Bend
H x H



Item No.	Diameter	Each Wt.	Inner Qty.	Master Carton
03160	4"	0.3470	0	10



45° Elbow • Street • 1/8 Bend
SP x H



Item No.	Diameter	Each Wt.	Inner Qty.	Master Carton
03256	3"	0.2440	0	30
03257	4"	0.3980	0	20
03217	6"	1.3300	1	18



45° Elbow • 1/8 Bend
H x H



Item No.	Diameter	Each Wt.	Inner Qty.	Master Carton
03162	3"	0.2710	0	20
03163	4"	0.4190	0	20
03211	6"	1.4100	1	18



45° Wye
All Hub



Item No.	Diameter	Each Wt.	Inner Qty.	Master Carton
03198	3"	0.5760	0	25
03199	4"	1.0100	0	10
03214	6"	3.0800	1	6

▶ PLASTIC FITTINGS | STYRENE SEWER & DRAIN FITTINGS



90° Elbow • 1/4 Bend
H x H

MADE IN USA

Item No.	Diameter	Each Wt.	Inner Qty.	Master Carton
03165	3"	0.3670	0	25
03166	4"	0.6850	0	15



Bushing
SP x H

MADE IN USA

Item No.	Diameter	Each Wt.	Inner Qty.	Master Carton
03216	6" X 4"	0.7300	1	24



**90° Elbow • Short Turn
1/4 Bend**
H x H

MADE IN USA

Item No.	Diameter	Each Wt.	Inner Qty.	Master Carton
03167	3"	0.2600	0	25
03168	4"	0.4610	0	25
03212	6"	1.1600	1	12



**Cap
Hub**

MADE IN USA

Item No.	Diameter	Each Wt.	Inner Qty.	Master Carton
03183	3"	0.1360	0	20
03184	4"	0.2260	0	10
03185	6"	0.5400	1	30



**90° Elbow • Short Turn
1/4 Bend**
SP x H

MADE IN USA

Item No.	Diameter	Each Wt.	Inner Qty.	Master Carton
03209	4"	0.4570	0	25
03218	6"	1.1100	1	12



Cleanout Adapter
H x FPT

MADE IN USA

Item No.	Diameter	Each Wt.	Inner Qty.	Master Carton
03268	3"	0.1720	0	24
03269	4"	0.2620	0	24



90° Elbow • Street • 1/4 Bend
SP x H

MADE IN USA

Item No.	Diameter	Each Wt.	Inner Qty.	Master Carton
03270	3"	0.3220	0	25
03271	4"	0.6710	0	15



Cleanout Adapter
SP x FPT

MADE IN USA

Item No.	Diameter	Each Wt.	Inner Qty.	Master Carton
03186	3"	0.1700	0	40
03187	4"	0.2810	0	20



Adapter Sleeve • Street
SP x F

MADE IN USA

Item No.	Diameter	Each Wt.	Inner Qty.	Master Carton
03245	3"	0.1200	0	25



Coupling
H x H

MADE IN USA

Item No.	Diameter	Each Wt.	Inner Qty.	Master Carton
03151	3"	0.1580	0	20
03153	4"	0.2680	0	25
03220	6"	0.4100	1	24



Cross
H x H

MADE IN USA

Item No.	Diameter	Each Wt.	Inner Qty.	Master Carton
03206	4"	0.7100	0	24



Coupling • Reducing
H x H

MADE IN USA

Item No.	Diameter	Each Wt.	Inner Qty.	Master Carton
03155	3" x 2"	0.1540	0	40
03156	4" x 2"	0.2640	0	20
03154	4" x 3"	0.2780	0	20
03215	6" x 4"	0.7300	1	24



Down Spout Adapter
DS x H

MADE IN USA

Item No.	Diameter	Each Wt.	Inner Qty.	Master Carton
03194	2" X 3" X 3"	0.2060	0	20
03195	2" X 3" X 4"	0.3120	0	10
03196	3" X 4" X 4"	0.3700	0	10



Tee • Reducing
H x H x H

MADE IN USA

Item No.	Diameter	Each Wt.	Inner Qty.	Master Carton
03219	6" X 6" X 4"	2.1000	1	8



Drain Grate
SP

MADE IN USA

Item No.	Diameter	Each Wt.	Inner Qty.	Master Carton
03272	3"	0.1420	0	30
03273	4"	0.2660	0	40



S/D x CI Adapter
H x CI H

MADE IN USA

Item No.	Diameter	Each Wt.	Inner Qty.	Master Carton
03263	4"	0.5780	0	25



Adapter • Male
H x MPT

MADE IN USA

Item No.	Diameter	Each Wt.	Inner Qty.	Master Carton
03202	3"	0.1830	0	25
03203	4"	0.2970	0	30



S/D x CI Adapter
H x CI SP

MADE IN USA

Item No.	Diameter	Each Wt.	Inner Qty.	Master Carton
03210	4"	0.1700	0	25



Plug
MPT

MADE IN USA

Item No.	Diameter	Each Wt.	Inner Qty.	Master Carton
03190	3"	0.1440	0	20
03191	4"	0.2550	0	40



S/D x Clay Adapter
H x Clay H

MADE IN USA

Item No.	Diameter	Each Wt.	Inner Qty.	Master Carton
03177	4"	0.7400	0	15

▶ PLASTIC FITTINGS | STYRENE SEWER & DRAIN FITTINGS



Saddle
All Hub

MADE IN
USA

Item No.	Diameter	Each Wt.	Inner Qty.	Master Carton
03240	4" X 1 1/2"	0.2100	0	25



Tee
H x H x H

MADE IN
USA

Item No.	Diameter	Each Wt.	Inner Qty.	Master Carton
03169	3"	0.4160	0	30
03170	4"	0.7140	0	15
03213	6"	2.2600	1	8



Tee • Sanitary
H x H x H

MADE IN
USA

Item No.	Diameter	Each Wt.	Inner Qty.	Master Carton
03172	3"	0.5300	0	24
03173	4"	0.8380	0	10

INDEX BY DESCRIPTION



TUBE & PIPE

Copper Tube

Copper Tube - Plumbing8
Copper Tube - Refrigeration9
Plastic Coated Copper Tube10
Level Wound Copper Tube11

Line Sets

Line Sets12-14
-----------	----------------

ABS DWV Pipe

ABS DWV Pipe15
--------------	-------------

COPPER FITTINGS

Copper Pressure Fittings

45° Elbow22
45° Wye30
90° Elbow22-25
Adapter18-19
Air Chamber20
Bushing20
Cap20
Copper Tube Strap30
Coupling20-22
Cross22
Fitting Reducer25
Flange26
Hanger30
Plug26
P-Trap26
Return Bend26
Tee27-30
Union30

Copper DWV Fittings

11-1/4° Elbow33
22-1/2° Elbow34
45° Elbow34
45° Wye36
60° Elbow34
90° Elbow34-35
Adapter31-32
Bushing33
Cleanout33
Coupling33
Drum Trap36
Flange33
P-Trap36-37
Plug35
Return Bend37
Tee35
Test Cap36
T-Y36
Vent Increaser36

Copper Flare Fittings

90° Elbow w/Flare Nuts38
Adapter - Two Piece38
Coupling - Three Piece38
Flare Nut38
Tee39

PLASTIC FITTINGS

PVC Sch. 40 Pressure Fittings

45° Elbow44
90° Elbow43-44
Adapter45-46
Bushing46
Cap46-47
Coupling44-45
Cross44
Deep Socket Coupling47
Plug47
P-Trap47
R-Trap47
Riser45
Tee42-43
Union47

Insert Fittings

90° Elbow48, 50
Adapter49
Bushing51
Coupling49
Insert Plug49
Tee50-51

ABS DWV Fittings

Adapter52-55
Bushing54
Cap54-55
Closet Flange63-64
Coupling52, 55
Drum trap63
Elbows56-58
Nut55, 65
Pipe Increaser52
Plug53-54
P-Trap62
Return Bend62
Swivel Tray Plug Adapter64-65
Tee58-60
Trap Adapter52-53
Washer55
Wye60-62

PVC DWV Fittings

Adapter66-69, 76
Bushing68-69
Cap68
Closet Flange77-78
Coupling66, 69
Drum Trap77
Elbows70-72
Nut70
Pipe Increaser/Reducer66
Plug67-68
P-Trap77
Return Bend76
Tee72-74
Trap Adapter66-67
Wye74-76

PVC Sewer & Drain Fittings

22-1/2° Elbow81
22-1/2° Elbow Street81
2-Way Cleanout82
45° Elbow81
45° Elbow Street82
45° Wye82
90° Elbow82
90° Elbow Street80, 82
Adapter79
Bushing79-80
Cap80
Cleanout Adapter80
Coupling80
Cross80
Down Spout Adapter81
Drain Grate81
Plug81
Tee81

Styrene Sewer & Drain Fittings

22-1/2° Elbow83
45° Elbow83
45° Elbow Street83
45° Wye83
90° Elbow84
90° Elbow Street84
Adapter84-85
Bushing84
Cap84
Cleanout Adapter84
Coupling84-85
Cross85
Down Spout Adapter85
Drain Grate85
Plug85
Saddle86
Tee85-86

TERMS OF SALE

Please visit:
www.muellerindustries.com



Streamline[®]
Tube • Fittings • Valves

Mueller Streamline Co. • 8285 Tournament Drive, Suite 150 • Memphis, TN 38125 • www.muellerindustries.com

Wholesale Customer Service: 1.800.FITTING (348.8464)

