

ST9103A Electronic Fan Timer

INSTALLATION INSTRUCTIONS

APPLICATION

The ST9103A Electronic Fan Timer integrates control of all burner and circulator fan operations in an oil furnace. This control is the central wiring point for most of the electrical components in the furnace. The basic purposes of the ST9103A are to monitor the thermostat for heat, cool, and fan demands and run the oil burner primary control and up to a two-speed circulating fan as required. The ST9103A also monitors a limit switch string, which energizes the circulating fan whenever the limit switch opens.

Electronic air cleaner and humidifier convenience terminal connections may be provided as an option. A means for operating continuous indoor air circulation is also available as an option.

SPECIFICATIONS

Electrical Ratings:

Power Requirements:
Voltage: 18-30 Vac, 50/60 Hz.
Current: 4 VA at 24 Vac.

Contact Ratings:

Circulating Fan: 15A Full Load, 30A Locked Rotor at 115 Vac (includes optional EAC load).

On/Off Delay Settings:

Delay On: 30 seconds, fixed.
Delay Off: 60, 90, 120, 150 seconds, field-adjustable.
Timing Tolerance: larger of $\pm 20\%$ or 5 seconds.

Environmental Ratings:

Temperature: -40 to +150° F [-40° to +66° C].
Humidity: 95% maximum, noncondensing.

INSTALLATION

When Installing this Product...

1. Read these instructions carefully. Failure to follow them could damage the product or cause a hazardous condition.

2. Check the ratings and specifications given in the Instructions and on the product to assure the product is suitable for your application.
3. Installer must be a trained, experienced service technician.
4. After installation is complete, check out the product operation as provided in these instructions.



CAUTION

Disconnect power supply before wiring to prevent electrical shock or equipment damage.

Location and Mounting

The ST9103A is mounted in the appliance wiring compartment using four No. 6 screws (obtained locally) through standoffs on the corners of the board.

Wiring

All wiring must comply with local codes and ordinances. Disconnect power before making wiring connections. Refer to Fig. 1 for standard wiring connections. Refer to Fig. 2 for an internal schematic.

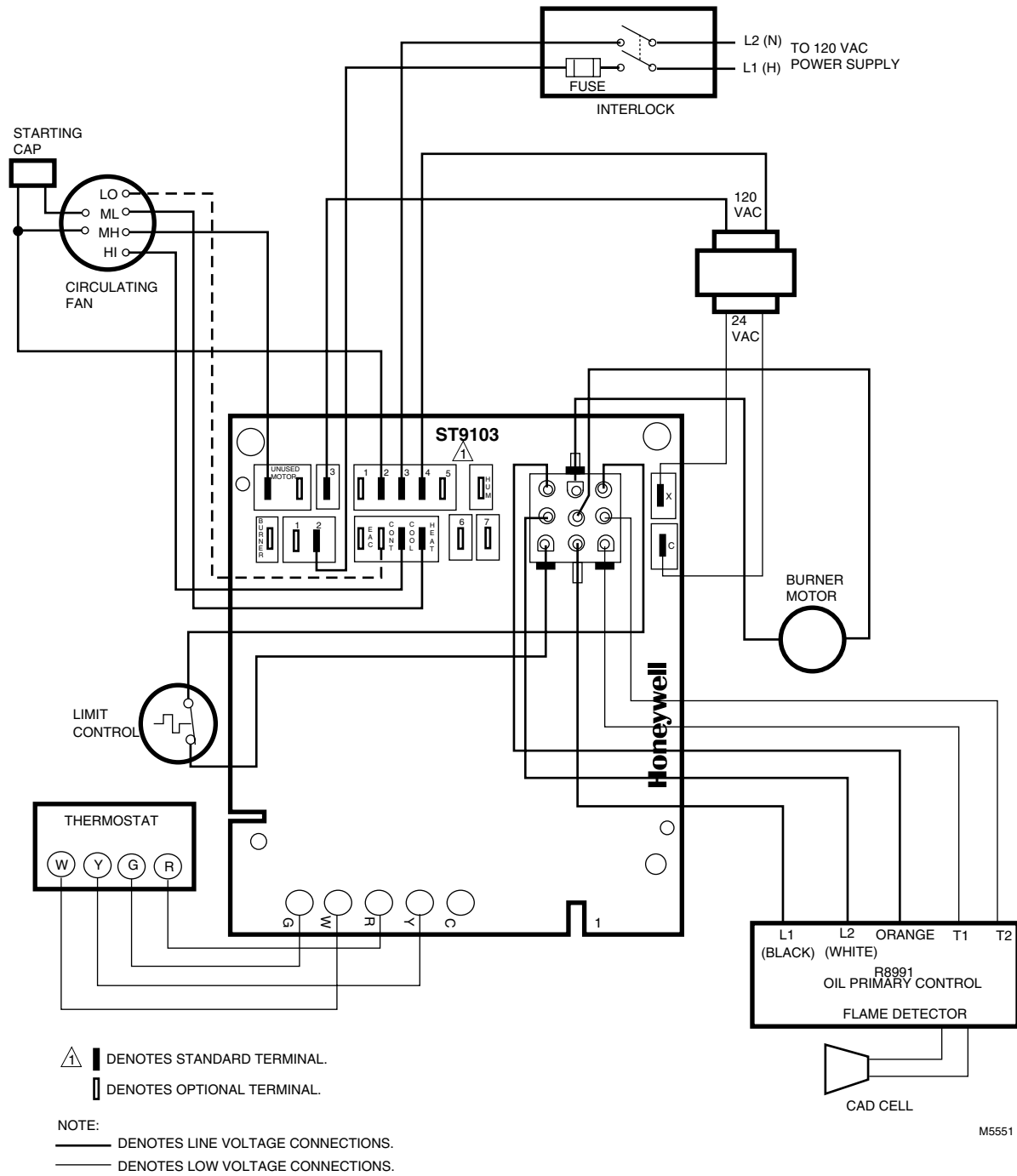
Setting the Heat Fan Off Delay Switches

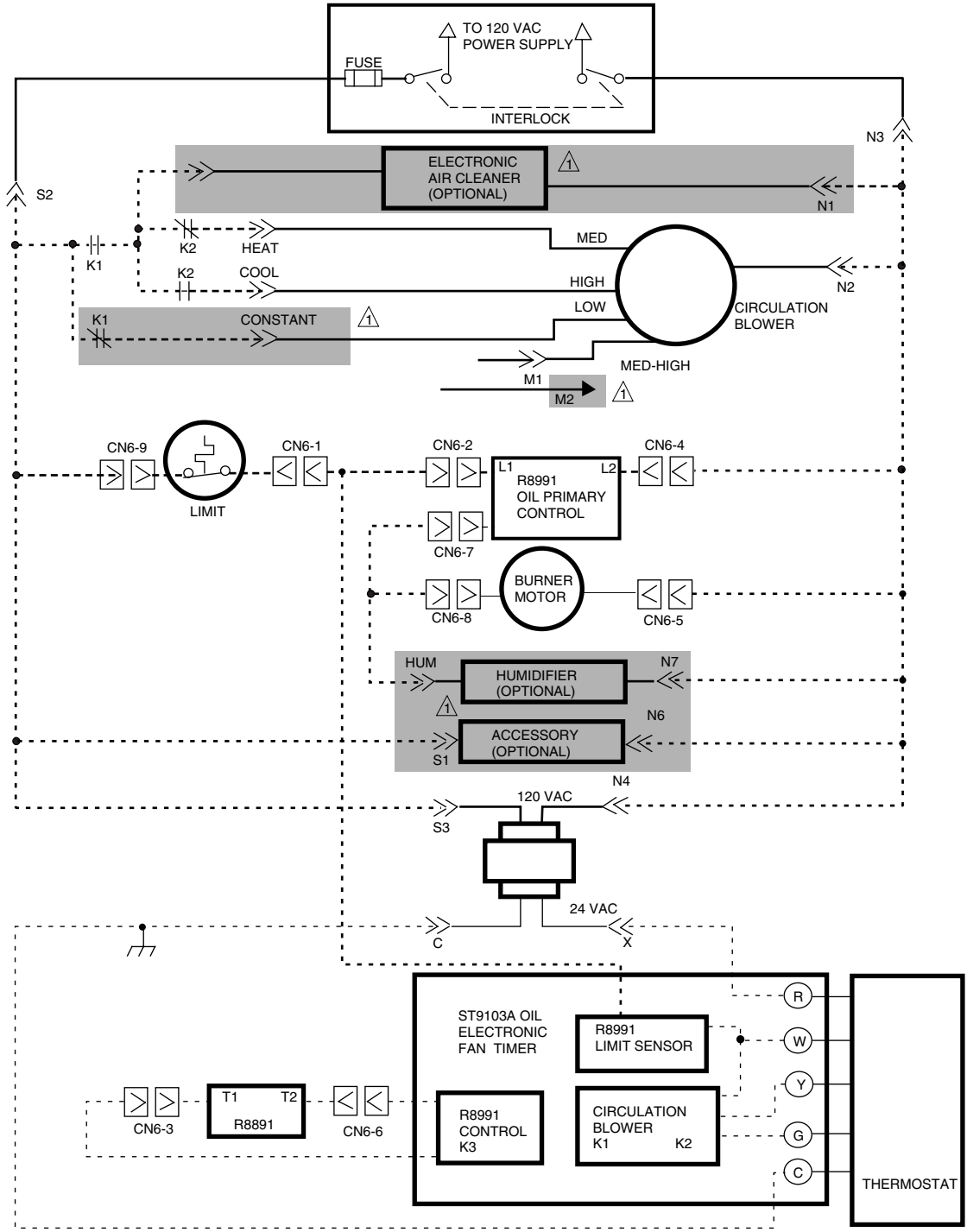
Set the heat fan off delay switches to either 60, 90, 120, or 150 seconds, as shown in Fig. 3. The off delay time starts when the burner motor is de-energized at the end of a thermostat call for heat.

CHECKOUT

Assure the system operates properly by operating the system through at least one complete heating cycle and cooling cycle, if applicable. Troubleshoot by checking for appropriate voltages at the ST9103A terminals controlling the burner motor and heat and cool speed circulating fan. The ST9103A schematic shows internal switching to clarify operation and assist in troubleshooting. See Fig. 2.







▲ DENOTES OPTIONAL CONNECTIONS, COMPONENTS AND ACCESSORIES.

NOTE: DOTTED LINES REPRESENT PRINTED CIRCUIT BOARD WIRING.

M5552

Fig. 2. ST9103A internal schematic.

ST9103 Operating Sequence (Continued).

Action	System Response
Thermostat ends call for fan. (G terminal is de-energized.)	<ul style="list-style-type: none"> • Circulating fan is de-energized.
Limit switch string opens.	<ul style="list-style-type: none"> • Oil primary control shuts off burner. • Circulating fan is energized immediately at heat speed. • ST9103A opens oil primary control T-T connections. • Circulating fan runs as long as limit string stays open. • If there is a call for cooling or fan, the circulating fan switches from heat speed to cool speed.
Limit switch string closes.	<ul style="list-style-type: none"> • ST9103A begins heat fan off delay sequence. • Circulating fan turns off after the selected heat fan off delay timing. • ST9103A recloses oil primary control T-T connections. • Oil primary control is energized, initiating burner light off.
Continuous circulating fan is connected. (Optional connectors are available for separate circulating fan speed tap.)	<ul style="list-style-type: none"> • Circulating fan is energized at low speed when there is no call for heat, cool or fan. • If fan operation is required by a call for heat, cool or fan, the ST9103A switches off the continuous fan speed tap before energizing the other fan speed.
Electronic air cleaner is connected. (Optional connectors are available for 120 Vac electronic air cleaner.)	<ul style="list-style-type: none"> • Electronic air cleaner (EAC) connections are energized when the heat or cool speed of the circulating fan is energized. EAC connections are <i>not</i> energized when the optional continuous fan terminal is energized.
Humidity control is connected. (Optional connectors are available for 120 Vac humidifier.)	<ul style="list-style-type: none"> • Humidifier connections are energized when burner motor is energized.

Honeywell

Home and Building Control

Honeywell Inc.
Honeywell Plaza
P.O. Box 524
Minneapolis MN 55408-0524

Home and Building Control

Honeywell Limited-Honeywell Limitée
155 Gordon Baker Road
North York, Ontario
M2H 2C9

Helping You Control Your World[®]