

Gray Metal South, Inc.

PRODUCT CATALOG

GRAYMETALSOUTH.COM

Mission Statement

Our present and continued objectives are to supply our distributors with a product line that is ever consistent in exceptional quality, and delivered expeditiously at a fair market price. We will always aspire to build partnerships with our customers, employees and suppliers by pledging a system of conduct that enthusiastically embraces values that foster trust, loyalty and long standing relationships. We commit to doing this by making the following pledges:

To Our Customer...

We pledge to continually invest in new automation and improvement techniques so we can provide you with a top quality product to allow you to remain competitive in the marketplace and to always keep our word to you. We promise to make changes and developments in products that reflect the changes and demands that arise in the marketplace. Above all, we promise service to you that represents our true level of appreciation for the opportunity to be your supplier.

To Our Employees...

We pledge to provide each employee a safe environment to work in and to recognize each individual accomplishment of exceptional service. We promise to reward service and achievement with equitable market wages and benefits. We also pledge to use hiring practices of merit from within to assure that no individual talent or dedication goes unrecognized.

To Our Suppliers...

We pledge to always remain loyal to your products and services considering we, too, are kept competitive and serviced with appreciation.

To Our Environment...

We pledge to always act responsibly to our environment and to be pro-active and not re-active.

To Our Competitors...

To always compete with integrity, fairness and honesty.

And finally we make this pledge to ourselves...

We promise ourselves and each other to always support the Gray principles of good business ethics, superior product service and quality and dedication to achieve excellence in whatever we do.

Gray Metal South, Inc.

GRAND OPENING & DEDICATION OF HUMBOLDT, TN FACILITY

Opportunity is defined as “A favorable or advantageous combination of circumstances”. The Gray family has had the good fortune to recognize, create and seize upon opportunities for over a century now. These opportunities have not come to them without the dedicated support of family, friends, employees and community. We stand here today because several people believed in themselves, their future and each other. The Gray corporate family history dates back to the early 1900’s. Malcolm E. Gray, founder of Rochester Can Company would begin what would become a century long commitment to the sheet metal industry. Malcolm was a prolific inventor, most notably recognized for his invention of the five day work week in 1922. His dedication to manufacturing was an inspiration to his brother, William H. Gray, who started a copper gutter hanger company, of which he held a patent on, under the company name of William Gray & Sons. William H. Gray would then later begin his transition into manufacturing of furnace pipe and fittings, incorporating in 1932 under the name, Gray Metal Products. Gray Metal’s modest beginnings would take place at what has become affectionately referred to as “Carlton Street” by our family. His son, William J. Gray, would continue on in his father’s footsteps, learning the business so that one day he, too, could pass it on to his son; our father, Richard E. Gray Sr. This would begin what can be defined today as our family’s legacy.

When our father inherited Gray Metal Products in 1974, he would immediately recognize the priceless value of our mother’s own inherent talent which would prove to parallel his own love and dedication to the business. Together, they would grow the business, dedicating long hours, with immeasurable sacrifice, working alongside employees; no task beneath them. Our parents would turn Carlton Street into a learning institution, imparting on each of us a sense of self, direction and confidence; creating what would one day be the foundations necessary for our own success and contributions to the family legacy.

With the growth and expansion efforts of Gray Metal Products, came opportunity for all of us to flourish in our own way. Our mother and father have been instrumental in all of our opportunities, encouraging us and believing in us at times more than we probably believed in ourselves. Our father was, in particular, the biggest enthusiast we had. He embraced and encouraged every dream, every goal and every step forward. He unified us in a single direction and gave us a feeling of independent accomplishment. He knew when to let go and when to step in. His love of what he did was contagious and inspirational. Today, from its’ modest beginnings at Carlton Street, the Gray Family collectively owns six manufacturing locations with substantial distribution in 30 states. It is for this reason, on this day, February 15 2008, that we give honorable mention to our mother, Carole L. Gray and dedicate this business endeavor, to our truest enthusiast, Richard E. Gray Sr., who believed in his family enough to create opportunity.

Gray Metal South, Inc.



Malcolm E. Gray



William H. Gray

Gray Metal Products, Inc.



1900

Malcolm E. Gray was a prolific inventor and held patents on several products; however his most significant contribution was the implementation and national recognition of the five day work week. Malcolm announced to his family on Christmas day, 1921 that he would soon begin the 5 day week for his employees. He made that formal on January 2, 1922.

1932 - William H. Gray, brother of Malcolm E. Gray founded Gray Metal Products, Inc. with operations at 30 Carlton Street, Rochester, NY with a warehousing facility located in the Rochester suburb of Webster, NY. Customer base was originally sheet metal contractors sold in the state of New York. William H. Gray is awarded several patents related to the gutter industry. Sons William J. Gray and Donald Gray would work along with their father William H. Gray.

1969 - Richard E. Gray Sr. convinces his father William J. Gray to purchase a Slear and add on a Coil room to Carlton Street for steel processing, thereby changing the factory from a Sheet fed plant to a Coil fed plant. This strategy would set the stage for full scale manufacturing and expansion efforts throughout the Northeast.

1980/1981 - Carlton Street location is sold to Rochester Museum of Natural Science and complete production and operations are relocated to an industrial complex located at 166 Norman Street in Rochester.

1908 - Rochester Can Company is formed by Malcolm E. Gray. During his tenure at Rochester Can Company, the business grew to several hundred employees manufacturing over 500 products under the trade name Iron Horse, including army trench helmets during World War I.

On June 30, 1930, Malcolm resigned from the presidency and became chairman of the firm's board of directors. He left management of day to day operations to his two sons-in-law, Rodney Sage Hatch and William Easton.

1955 - Control of Gray Metal Products goes to brothers William J. and Donald. During this time, William J. Gray would recognize the value of shipping to HVAC wholesale distributors and discontinue contractor direct sales. This would widen distribution channels and open up greater volume opportunities throughout New York. Eventually, William would buy out his brother Donald entirely and gain exclusive control over the business. Also during this time, William's youngest son, Richard E. Gray Sr. would mentor under his father's guidance in the business.

1974 - William J. Gray passes on and control of Gray Metal Products, Inc. goes to (son) Richard E. Gray Sr. & (daughter-in-law) Carole L. Gray. Shortly thereafter, expansion into the hardware market would necessitate the need for another addition to Carlton Street for warehouse space.

COMPANY TIMELINE



William J. Gray



Richard E. Gray Sr.



1989 - Gray Flex Systems, a full line manufacturer of insulated flexible duct, is founded by William R. Gray of Rochester, NY. Business operations are temporarily relocated to Woodland, NC and eventually relocated permanently to Coats, NC in 1992.



1991 - The Gray family acquires a small competitor by the name of Nova Industries out of West Point, Virginia, renaming the company Gray Metal South, Inc. Current principal owners and operators are Marguerite Gray-Hearn & Joseph E. Gray.



1998 - Snap-Rite is founded by William R. Gray out of Coats, North Carolina. Operations are relocated to Lake Park, Georgia in January 2000.

2006 - Majority interest in Gray Metal Products is passed on to Carole L. Gray after the passing of Richard E. Gray Sr, with sons Richard E. Gray Jr. and Martin E. Gray acting as managing principals.

2009



1990 - William R. Gray is awarded his first of many patents related to the HVAC Industry.

1997 - Gray Metal South sells their West Point, Virginia based location and relocates to Dunn, North Carolina to a new 85,000 square foot facility. Necessary expansions of 31,600 square feet are made in 2000, 33,200 square feet in 2005 and 85,000 square feet in 2007. Total production and warehouse space is currently at 235,000 square feet in the Dunn, North Carolina location.

2000 - Snap-Rite acquired a competitor by the name of Automated Ductwork Manufacturing (ADM) out of Cleveland, Ohio on February 15th, 2000.

2007 - Gray Metal South in Humboldt, TN is founded by Joseph E. Gray. Operations become official February 15th, 2008.

Gray Metal South INC.

1



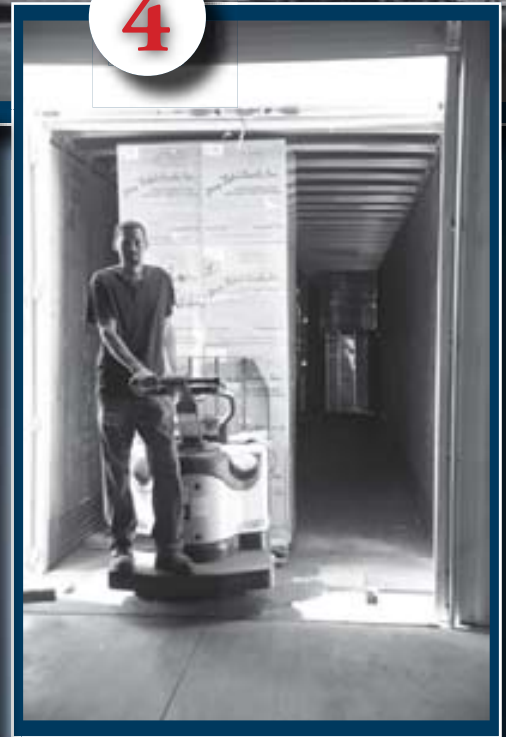
3



2



4



- 1. Gray Metal South operates their own fleet of tractor-trailers for quick, direct to your door deliveries.
- 2. Gray Metal South stretch wraps all products and never ships loose boxes unless requested by the distributor. Pipe is loaded on end on wooden pallets to significantly reduce the possibility of damage in transit. If requested, the pipe can be shipped horizontally in metal racks as shown in the photograph.
- 3. Elbows can be shipped straight to better utilize warehouse space or shipped turned if the distributor prefers.
- 4. Pallets unload as easy as they load with a hand operated pallet jack. Trucks are packed efficiently and tightly to help assure every order is filled completely and eliminating product damage during shipments.

TABLE OF CONTENTS

PAGE	CONTENT INFORMATION
1	GRAND OPENING & DEDICATION
2	COMPANY TIMELINE
4	GRAY METAL PLANT
5	TABLE OF CONTENTS
6	PRODUCT INDEX ALPHABETICALLY
8	POLICIES & PROCEDURES
9	WALL STACK & FITTINGS
10	TRUNK DUCT & FITTINGS
12	TRUNK DUCT ACCESSORIES
13	PLENUMS & PANS
16	TAKEOFFS - SHEETMETAL
17	TAKEOFFS - DUCT BOARD
17	PIPE & ACCESSORIES
20	ELBOWS, ANGLES, TEES & WYES
23	REGISTER BOOTS
25	INSULATED CEILING OUTLETS & REGISTER BOXES
30	INSULATED WYE PANELS & ENDS
30	FIRE DAMPER BOOTS & BOXES
31	TAKEOFFS - AIR TITE
32	SPIN FITTINGS - METAL
33	SPIN FITTINGS - DUCTBOARD
33	METAL STARTING COLLARS
34	DUCTBOARD STARTING COLLARS, OVAL PIPE AND FITTINGS
35	VENTING AND ROOF PRODUCTS
37	BLACK PIPE, ELBOWS & ACCESSORIES
38	STAINLESS PRODUCTS
39	ACCESSORIES

Gray Metal South, Inc.

A		
Angle, 45 Degree Adjustable	303	20
Angle, Stack, Long Way	123	10
Angle, Stack, Short Way	121	10
Angle, Trunk, Long Way, Slide/Drive	123SD	11
Angle, Trunk, Short Way, Slide/Drive	121SD	10
Air Tite, Collar, Adhesive	400A	31
W/ Damper	400AD	31
W/ Scoop	400AS	31
W/ Scoop & Damper	400ASD	31
Air Tite, Fitting, Conical	408A	32
W/ Damper	408AD	32
Air Tite, Fitting, Conical, W/ Damper & Quadrant Standoff	408ADQ	32
Air Tite, Fitting, Conical, W/ Scoop & Damper	408ASD	32
Air Tite, Take Off, Saddle /Pipe	406A	31
W/ Damper	406AD	31
W/ Scoop	406AS	31
W/ Scoop & Damper	406ASD	31
B		
Band, Draw, Galvanized	316	18
Boot, 45 Degree Adjustable	111A	23
Boot, 90 Degree	113R	23
Round to Oval	505-0	34
W/ Flange	113RF	23
W/ Plaster Frame	113RPF	23
Boot, Angle, Adjustable	113A	23
Boot, Angle, Extended	113REA	23
Boot, Center End	112S	9
W/ R4 Insulation	112IN4	25
W/ R6 Insulation	112IN6	25
Boot, Cold Air	189SD	16
Boot, End, Center	112R	23
W/ Flange	112RF	23
Boot, End, Round to Oval	504-0	34
Boot, Fire Damper Extended Angle	113READ	30
W/ Flange	113READF	30
Boot Rails	18BOOTRAILS	39
Boot Rails	26BOOTRAILS	39
Boot, Round to Oval, Black	610	37
Boot, Side Mount W/ R4 Insulation	113IN4	25
W/ R6 Insulation	113IN6	25
Boot, Stack	113S	9
Boot, Straight	110S	9
Boot, Straight	110R	23
Round to Oval	506-0	35
W/ Flange	110RF	23
W/ Plaster Frame	110RPF	23
Boot, Top, Slant, W/ Flange & R4 Insulation	3604FS	27
W/ Flange & R6 Insulation	3606FS	27
W/ Flange & R8 Insulation	3608FS	27

Boot, W/ Flange & Angle, W/ R4 Insulation	3604FA	27
W/ R6 Insulation	3606FA	27
W/ R8 Insulation	3608FA	27
Boot, W/ Flange & Collar, W/ R6 Insulation	3606F	29
W/ R8 Insulation	3608F	29
Box, Stackhead Closet, L-Shaped	101	14
Box, Diffuser, Top Outlet	320T	14
Box, Blind	BB	14
Box, Diffuser	320	14
Box, Diffuser, Side Outlet	320S	15
Box, Fire Damper, Side Mount, Radiation		
W/ Flange W/ R4 Insulation	213	30
W/ Flange W/ R6 Insulation	213	30
W/ Flange W/ R8 Insulation	213	30
Box, Fire Damper, Top Mount, Radiation		
W/ Flange W/ R4 Insulation	210	30
W/ Flange W/ R6 Insulation	210	30
W/ Flange W/ R8 Insulation	210	30
Box, Insulated, Top Flange	3406TF-6	27
Box, Insulated, W/ Filter Rack	317FR	13
Box, Mobile Home, 318 MHB	MHB	15
Box, Mobile Home, 317 MHB	MHB	15
Box, No Collar, No Flange, 4 or 6 Deep,		
W/ R4 Insulation	3404NF	25
W/ R6 Insulation	3406NF	25
W/ R8 Insulation	3408NF	25
Box, Register, No Flange	331	23
Box, Return, No Flange		
W/ R6 Insulation	3900	29
W/ R8 Insulation	3900	29
Box, Slant Top, Insulated, No Flange	3604NFS	28
Box, Slant Top, Insulated, No Flange	3606NFS	28
Box, W/ Collar No Flange, 4 or 6 Deep,		
W/ R4 Insulation	3404NF	25
W/ R6 Insulation	3406NF	25
W/ R8 Insulation	3408NF	25
Box, W/ Flange, 4 or 6 Deep		
W/ R4 Insulation	3404F	25
W/ R6 Insulation	3406F	25
W/ R8 Insulation	3408F	25
Box, W/ Flange & Ductboard Backing		
W/ R6 Insulation	3800F	29
W/ R8 Insulation	3800F	29
Branch, Wye	307	22
C		
Canstock	2X2CANSTOCK	39

PRODUCT INDEX ALPHABETICALLY

Canstock	112X10CANSTOCK	39
Cap, End, Set In	117SET	9
Cap, Chimney	327	35
Cap, Large End W/ No Crimp, Black	603LE	37
Cap, Round, Old Style Shanty	327OFF	35
Cap, Rain, Shanty, Stainless	927	38
Cap, Set In	187	12
Cap, Vent, Wind Band	351	36
Cap, Wall, Aluminum	805	36
Cleat, Drive	DRIVE	12
Cleat, S	324	12
Cleat, Standing S	324 S	12
Collar, Click Click, Unassembled, Ductboard	404DCC	34
Collar, Flex Duct, Metal Starting w/ Click Click	313FGCC	33
Collar, Offset, Slide/Drive	151SD	11
Collar, Small End	313SE	33
Collar, Small End, 6 Long	313FG	33
Collar, Storm	335	35
Collar, Starting, Center Transition	81CSD	11
Collar, Starting, Slide/Drive	141SD	11
Collar, Starter, Straight	141	10
Collar, Straight Starting W/ Damper	326	33
Collar, Tab, for 1 & 1 1/2 Inch Ductboard	404D	34
for 2 Inch Ductboard	404D2	34
Collar, Tab, W/ Damper	405D	34
Collar, Trim, Black	605	37
Connector, Crimp Both Ends, Black	606	37
Connector, SC Sleeve	SC	18
D		
Damper, Cast Iron	CID	38
Damper, Stack	116	9
Damper, Trunk	184	12
Damper, Round	314	18
Diffuser, Round, Adjustable, 6	6-DIFF	36
Diverter, Draft, Vertical	350	36
Duct, Flex, Aluminum	801	36
Duct, Trunk, Slide/Drive	125SD	11
E		
Elbow, 90 Degree Aluminum	802	18
Elbow, 90 Degree, Stainless	902	38
Elbow, Adjustable, Black	602	37
Elbow, Corrugated, 30 Gauge Galvanized	302C	20
Black	602C	37
Elbow, Oval, One Piece Vertical	502-0	34
Elbow, Oval, 4-Piece Flat	502-OF	34
Elbow, Stack, Long Way	122	10
Elbow, Stack, Short Way	120	9

Elbow, Straight, Adjustable	302ST	20
Elbow, Trunk, Long Way, Slide/Drive	122SD	11
Elbow, Trunk, Short Way, Slide/Drive	120SD	10
Elbow, Turned, Adjustable	302	20
F		
Face Plate, Brown Louver	BLB	37
Face Plate, White Louver	WLB	37
Flashing, Roof	1200	35
Flashing, Tall	1212	35
Flashing, Tall, Cap	1227	35
Flashing, Tall, Cap	1251	35
Fluestop, Adjustable, 6 to 8 , Black		38
Frame, Cold Air	CAF	14
Frame, Plaster	PF	39
Frame, Plaster, Round	442	39
H		
Hanger, Trunk	185	12
Hod W/ Shovel, Coal, Black	BHOD	38
Hood, Ultra Flow, White, No Tail W/ 6 Tail	WHB WHAB6	36 37
Hose, Dryer, Vinyl, 3 x 50	3X50-Hose	36
Hose, Dryer, Vinyl, 4 x 50	4X50-Hose	36
I		
Increaser	312	18
Increaser, Black	612	38
Intake, Fresh Air	329	35
Increaser, Trunk, Slide/Drive	210SD	11
Increaser/Reducer, Stainless, Plain	911P	38
J		
Jacks, Roof, Aluminum	806	36
Jack, Roof, Aluminum	RV	36
Joint, Slip, Black	607LE	37
L		
Line Cover	4X4X8LINECOVER	39
Line Cover	4X5X8LINECOVER	39
Line Cover	4X6X4-96LINECOVER	39
Line Cover	5X5X8LINECOVER	39
P		
Pan, Drain	191	14
Pan, Drain, Emergency	EDP	15
Pan, Funnel, Square to Round	318	14
Pan, Insulated Blank	317INS	13
Panel, Cold Air	323	13
Panel, End, Triangle Insulated	307INEND	30
Panel, Side, Square Insulated W/Collar	307INPANEL	30
Pipe, 24 Aluminum	800	18
Pipe, Galvanized, 24	300	17
Pipe, Galvanized, 60 , Unassembled	301	17

Pipe, Galvanized. 60	301	17
Plate, Nail		39
Plate, Nail, 16 Gauge (16 Holes)	3X18NAILPLATE	39
Pipe, Oval. 60	500-0	34
Pipe, Oval. 100	501-0	34
Plug, Round, Small End	309	17
Plug, Small End W/ Crimp, Black	603SE	37
Pipe, Stainless, 12	900A	38
Pipe, Stainless, 18	900C	38
Pipe, Stainless, 24	900B	38
Pipe, Stainless, 36	900	38
Pipe, Stainless, 48	901	38
Pipe, Stove, Black, 24	600	37
Plenum, Adjustable	188ADJ	13
Plenum, Box, Insulated	388	13
Plenum Chamber	188	13
Plenum Panel	PANEL ONLY	13

R

Rack, Filter	189FR	13
Rack, Filter, W/ Flange	189FRF	13
Reducer, Black	611	38
Reducer, Crimped	311	17
Reducer, Trunk	190	11
Reducer, Trunk, Slide/Drive	200SD Reducer	11
Reducer, Wall Stack	105	9
Reducer/Incraser, Plain	311P	17

S

Spin Fitting, Metal	400M	32
W/ Damper	401M	32
W/ Scoop	402M	32
W/ Scoop & Damper	403M	32
W/ Scoop & Damper & H Standoff	403MH	32
Spin Fitting, Ductboard	400D	33
W/ Damper	401D	33
W/ Scoop	402D	33
W/ Scoop & Damper	403D	33
Spin Reducer, Conical	411	32
Spin Reducer, Conical	411D	32
W/ Scoop & Damper	411SD	32
Stack Head	101	9
Stack Head, Oval	507-0	35
Stack Head, Oval, Double	507OD	35
Stack Head, Sidewall	104	9
Stack, Wall	124	10
Stand, Heater	4X4X16HEATSTAND	39
Stand, Heater	4X4X29HEATSTAND	39
Standoff, W/ Damper	163DH	16
Starter, 1 x4 -48	DUCT STARTER	12
Strap - Nailguard, FHA	12-FHASTRAP	39
Strapping, Perforated	HANGING PERFORATED STRAP	12
Strapping, Solid	HANGING STRAP	12

T		
Takeoff, Adjustable	181	16
Round to Round	201	16
Takeoff, Fiberglass	161FG	17
Takeoff, Fiberglass	161FGE	17
Takeoff, Fiberglass	181FG	17
Takeoff, Side	163	16
Below Joist	176	16
W/ Adhesive & Damper, 6 Collar	165AD	16
Takeoff, Top	161	16
Adhesive 6 Collar	161A	16
Adhesive W/Damper 6 Collar	161AD	16
Tee, Black	604	37
Tee, Easy Flow, 26 Gauge	304EZ	22
Tee, Increasing	305I	21
Tee, Reducing	305	21
Tee, Stainless	904	38
Tee, Stainless, Cap LE	910	38
Tee, Stub Wye, Old Style	306CC	21
Tee, Tapered Flue, W/ Full Flow Wye	306	21
Thimble, Adjustable, Galvanized	315	18

U

U Channel	1X1X60-26UCHAN	39
-----------	----------------	----

V

Vent, Foundation W/ Screen & Caulk	FV	36
Vent, Goose Neck	GNV	36
Vent, Kit, Dryer, Aluminum	804	36

W

Wye, Triangle Insulated	307IN4	30
Wye, Triangle Insulated	307IN6	30

PRODUCT RETURN POLICY

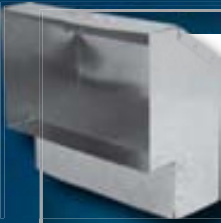
Please apply the following guidelines to any products requested to be returned for credit:

1. Specialty products made (non-stock items) will not be accepted for return under any circumstances.
2. Standard products will be considered for return if they are returned in the original carton. Management will take into consideration the number of inventory turns the product has in deciding whether they will accept the product back. If cartons are damaged from the outside after remaining in the customer warehouse for any length of time, it will be assumed the damage occurred at the customer location and not as a result of shipping or vendor negligence and therefore considered not valid.
3. Product authorized for return must have a valid return authorization number.
4. A 15% restocking charge will be applied to all returns resulting from excess inventory or customer error in ordering. When Gray Metal has made the error, the return will be handled automatically and the customer will be given the option of the correct product being shipped out prepaid, regardless of minimums being met.
5. Product shipped that was damaged in transit will be able to be returned and exchanged when reported within 24 hours of receipt.

SHORTAGE/OVERAGE POLICY - 48 HOUR RULE

Gray Metal South requires any shortages or overages be reported within 48 hours of delivery.

WALL STACK & FITTINGS



STACK HEAD
101

12 PER BOX
10 x3 x6

PACKAGED TO ORDER

14 x3 x6	12 x3 x4
14 x3 x8	12 x3 x6
12 x2 x6	10 x3 x4



SIDEWALL STACK HEAD
104

PACKAGED TO ORDER

10 x3 x6	12 x3 x6
12 x3 x4	14 x3 x6



WALL STACK REDUCER
105

PACKAGED TO ORDER



STRAIGHT STACK BOOT
110S

12 PER BOX

8 x3 x6	12 x3 x5 , 6 , 7 , 8
10 x3 x4 , 5 , 6	14 x2 x6
10 x2 x6 , 7	14 x3 x6 , 7 , 8
12 x2 x6	



CENTER END STACK BOOT
112S

12 PER BOX

10 x3 x5 , 6
12 x3 x5 , 6 , 7
14 x3 x8

PACKAGED TO ORDER

10 x2 x5	12 x3 x8
----------	----------



90° STACK BOOT
113S

12 PER BOX

10 x2 x6 , 7	12 x2 x6
10 x3 x7	12 x3 x5 , 6 , 7 , 8
10 x3 x4 , 5 , 6 , 8	14 x3 x7 , 8



STACK DAMPER
116

PACKAGED TO ORDER

10 x2 , 3	14 x2 , 3
12 x2 , 3	



SHORT WAY STACK ELBOW
120

12 PER BOX 10 x3

PACKAGED TO ORDER

12 x3	10 x2	14 x2
14 x3	12 x2	



SET IN END CAP
117SET

PACKAGED TO ORDER

10 x2 , 3	14 x2 , 3
12 x2 , 3	

WALL STACK & FITTINGS **CONTINUED**



SHORT WAY STACK ANGLE

PACKAGED TO ORDER **121**

10 x2	12 x3
10 x3	14 x2
12 x2	14 x3



LONG WAY STACK ELBOW

6 PER BOX **10 x3** **122**

PACKAGED TO ORDER

10 x2	14 x2
12 x2	14 x3
12 x3	—



WALL STACK **124**

(SHOWN ASSEMBLED, SHIPPED UNASSEMBLED)

6 PER BOX **10 x3 x36**

5 PER BOX

10 , 12 , 14 x2 , 3

LENGTHS:

24 , 36 , 48 , 60 & 96

PACKAGED TO ORDER

12 x3 x96 **14 x3 x96**



LONG WAY STACK ANGLE

6 PER BOX **123**

12 x3

PACKAGED TO ORDER

10 x2	14 x2
10 x3	14 x3
12 x2	—



STRAIGHT STARTER STACK COLLAR

PACKAGED TO ORDER **141**

12 x3

14 x3

10, 12 , 14 x2

4 PER BOX **10 x3**

TRUNK DUCT & FITTINGS



SLIDE / DRIVE SHORT WAY TRUNK ELBOW

120SD

4 PER BOX

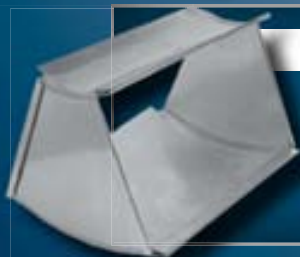
8 x8 thru 12 x8
16 x8 thru 20 x8

6 PER BOX

14 x8
24 x8

PACKAGED TO ORDER

22 x8 , 26 x8 thru 30 x8
10 x10 thru 24 x10



SLIDE / DRIVE SHORT WAY TRUNK ANGLE

121SD

4 PER BOX

8 x8 , 10 x8 , 24 x8
14 x8 thru 20 x8

6 PER BOX

14 x8

PACKAGED TO ORDER

22 x8 , 26 x8 thru 30 x8
10 x10 thru 24 x10



**SLIDE / DRIVE
LONG WAY
TRUNK ELBOW**

122SD

2 PER BOX

18 x8 -20 x8

4 PER BOX

8 x8 thru 16 x8
24 x8

PACKAGED TO ORDER

22 x8 , 26 x8 thru 32 x8
10 x10 thru 28 x10



**SLIDE / DRIVE
LONG WAY TRUNK ANGLE**

123SD

2 PER

8 x8
10 x8
14 x8

4 PER

12 x8 18 x8
16 x8 24 x8

PACKAGED TO ORDER

6 PER

20 x8

22 x8 , 26 x8 thru 32 x8
10 x10 thru 28 x10



SLIDE / DRIVE TRUNK DUCT

125SD

10 PER BOX

8 x8 thru 12 x8
10 x10 thru 12 x10

6 PER BOX

14 x8 thru 36 x8
14 x10 thru 36 x10

PACKAGED TO ORDER

26 x8 through 36 x8
26 x10 through 36 x10
12 x12 x48
14 x12 x48
14 x14 x48
20 x12 x48
24 x12 x48

**SLIDE / DRIVE
STARTING COLLAR**

141SD

PACKAGED TO ORDER

8 x8 - 36 x8



**SLIDE / DRIVE
OFFSET COLLAR**

151SD

PACKAGED TO ORDER

8 x8 - 36 x8



TRUNK REDUCER

190

4 PER BOX

8 x8 - 12 x8
12 x10 - 14 x10
14 x12 - 16 x12
16 x4
20 x16 x8
24 x20 x8

ALL OTHER
SIZES

PACKAGED
TO ORDER



**SLIDE / DRIVE
TRUNK REDUCER
& INCREASER
200SD REDUCER**

12 PER BOX

2 - 8

PACKAGED TO ORDER

2 x10 - 6 x10

210SD INCREASER

PACKAGED TO ORDER

2 - 8



**CENTER TRANSITION
STARTING COLLAR**

81CSD

PACKAGED TO ORDER

ALL SIZES

TRUNK DUCT ACCESSORIES



TRUNK DAMPER

184

PACKAGED TO ORDER

ALL SIZES

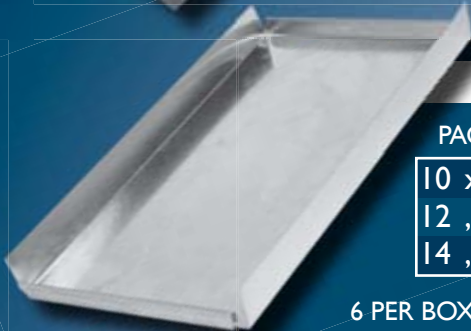


TRUNK HANGER

185

PACKAGED TO ORDER

ALL SIZES



SET IN CAP

187

PACKAGED TO ORDER

10 x10 - 30 x10
12 , 20 , 24 x12
14 , 24 x14

2 PER BOX

24 x 8

6 PER BOX

12 , 14 , 16 , 20

4 PER BOX

8 x 8 - 32 x 8
8 , 10 x 8

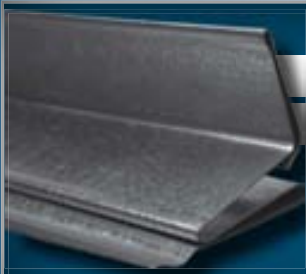


S CLEAT

324

25 PER BOX

48 , 60 , 120



**STANDING
S CLEAT**

324S

10 PER BOX

60 & 120



DRIVE CLEAT

DRIVE

100 PER BOX **8**

25 PER BOX

60 & 120

1 X 4 - 48 STARTER

DUCT STARTER

PACKAGED TO ORDER



PERFORATED 3/4" X 100' STRAPPING

PACKAGED TO ORDER

P STRAP

SOLID 1" X 100' STRAPPING (24 & 26 GAUGE)

SOLID 1 1/2" X 100' STRAPPING (24 & 26 GAUGE)



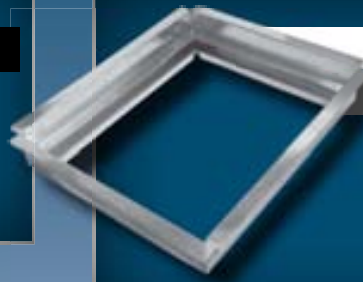


PLENUM CHAMBER

188

SHOWN ASSEMBLED –
SHIPPED KNOCKED DOWN
WITH 4 SIDES & A TOP

PACKAGED TO ORDER

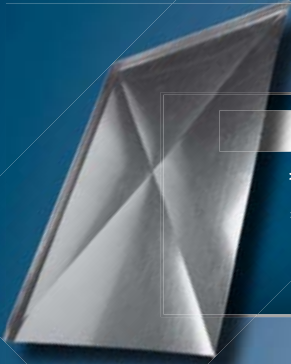


FILTER RACK W/ FLANGE

189FRF

PACKAGED TO ORDER

16 x25	20 x20
16 x20	—

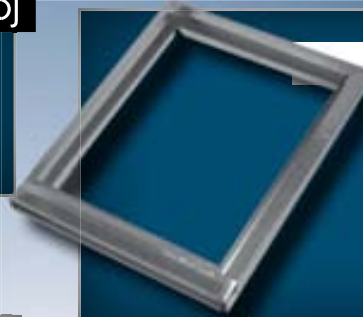


ADJUSTABLE PLENUM 188ADJ

* PLENUM PANEL ONLY SHOWN

* SHIPPED KNOCKED DOWN
WITH 4 SIDES AND A TOP.

PACKAGED TO ORDER



FILTER RACK

189FR

PACKAGED TO ORDER

14 x20	20 x20
16 x20	20 x25
16 x25	—



INSULATED BOX W/ FILTER RACK

317FR

PACKAGED TO ORDER



INSULATED BLANK PAN 317INS

PACKAGED TO ORDER



COLD AIR PANEL

12 PER BOX 323

17 x30

PACKAGED TO ORDER

32 x30



INSULATED PLENUM BOX

388

SHOWN ASSEMBLED –
SHIPPED KNOCKED DOWN
WITH 4 SIDES & A TOP

PACKAGED TO ORDER

PLENUM PANEL

PANEL ONLY

PACKAGED TO ORDER





**STACK HEAD L-SHAPED
STACKHEAD CLOSET BOX**

101

PACKAGED TO ORDER

14 x20	20 x20
16 x20	20 x25
16 x25	20 x30



DRAIN PAN

191

SHOWN WITH
3/4" PVC FITTING

PACKAGED TO ORDER



**FUNNEL PAN
SQUARE TO ROUND**

318

PACKAGED
TO ORDER

ALL LABELED WITH SIZE

COLD AIR FRAME

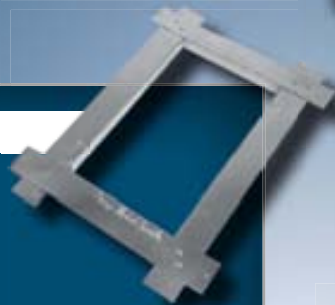
CAF

PACKAGED
TO ORDER

12 x6	30 x6
14 x6	48
14 x8	—

12 PER BOX

24 x6



BLIND

BOX

BB

PACKAGED TO ORDER



**TOP OUTLET
DIFFUSER BOX**

320T

2 PER BOX

14 x14 x10, 12

4 PER BOX

8 x8 x5

12 x12 x8, 10

8 PER BOX

6 x6 x4, 5, 6

8 x8 x6, 7, 8

10 PER BOX

10 x6 x4, 5, 6, 7

OTHER SIZES : PACKAGED TO ORDER



DIFFUSER BOX

320

PACKAGED TO ORDER



BLANK

PAN

317

PACKAGED TO ORDER



SIDE OUTLET

DIFFUSER BOX

8 PER BOX **320S**

6 x6 x4 , 6

8 x8 x7

OTHER SIZES: PACKAGED TO ORDER



318 MHB

MOBILE HOME

BOX **MHB**

SEE CHART

318 MOBILE HOME BOX



EMERGENCY

DRAIN PAN

12 PER BOX **EDP**

3 x6 x3



317 MHB

MOBILE

HOME BOX

MHB

Same sizes are available
as the 318 MHB.
All are PTO.

SEE CHART

318 MOBILE HOME BOX

318 MOBILE HOME BOX

SIZE	BOX QTY	SIZE	BOX QTY
20x24x18	PTO	16, 14x20, 14x18	3
12x20x12	PTO	16x20x16	PTO
12x20x14	3	16x20x14	3
12x12x12	4	20 x20 x18	3
12x24x12	3	20 x25 x20	2
12x20x16	3	20x20x16, 18, 20	3
14x20 x14	3	20 x30 x16	PTO
14x20x12	3	20 x20 x14, 16	3
14x20x14	PTO	20x25x16	2
14x20x16	3	20x30x16	PTO
14x24x14	PTO	20x25x20	3
14x14x6, 12, 24	3	20 x14 x16	3
14x20x6	PTO	20 x25 x16	2
18x24x14	PTO	20x20x14	PTO
14x25x14	PTO	24 x30 x18	PTO
16x24x16	3		

TAKEOFFS - SHEETMETAL




TOP TAKEOFF 161

24 PER BOX **6**

12 PER BOX **4, 5, 7 & 8**


PACKAGED TO ORDER **9 & UP**



ADHESIVE TOP TAKEOFF 161A

12 PER BOX **5 - 8**

PACKAGED TO ORDER **9 & UP**



TOP TAKEOFF W/ ADHESIVE & DAMPER 161AD

12 PER BOX **5 - 8**




SIDE TAKEOFF 163

4 PER BOX **12**

6 PER BOX **10**

12 PER BOX **5 - 8**

PACKAGED TO ORDER **4**




STANDOFF W/ DAMPER 165DH

12 PER BOX **6**



SIDE TAKEOFF W/ ADHESIVE & DAMPER & 6 COLLAR 165AD

PACKAGED TO ORDER **6, 8, 10 & 12**




SIDE TAKEOFF BELOW JOIST 176

PACKAGED TO ORDER

10 x 3


12 x 3



ADJUSTABLE TAKEOFF 181

12 PER BOX **4 - 8**

PACKAGED TO ORDER **9 & UP**



COLD AIR BOOT 189SD

PACKAGED TO ORDER

12 x 8 thru 28 x 8



ROUND TO ROUND ADJUSTABLE TAKEOFF 201

12 PER BOX **5 - 8**

TAKEOFFS - DUCT BOARD



FIBERGLASS TAKEOFF

12 PER BOX **161FG**

4 - 8

PACKAGED TO ORDER

10



FIBERGLASS TAKEOFF

12 PER BOX **161FGE**

5 - 8



FIBERGLASS TAKEOFF

181FG

12 PER BOX 5 - 8

4 PER BOX 10

PIPE & ACCESSORIES



ROUND PLUG

SMALL END **309**

12 PER BOX 10 PER BOX

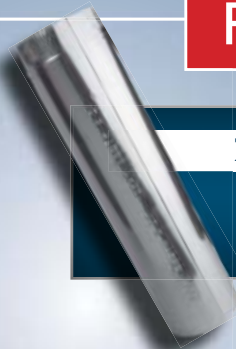
3 - 9

16

20 PER BOX PACKAGED TO ORDER

10 - 14

18 , 20



24 GALVANIZED PIPE

SEE CHART **300**
GALVANIZED PIPE



ROUND CAP

LARGE END **310**

10 PER BOX 10 PER BOX

3 - 9

16

20 PER BOX PACKAGED TO ORDER

10 - 14

18 - 24

60 GALVANIZED PIPE

301 UNASSEMBLED

SEE CHART
GALVANIZED PIPE

60 GALVANIZED PIPE

301 SEE CHART
GALVANIZED PIPE

REDUCER/CRIMPED

311 SEE CHART
REDUCER 311



PLAIN REDUCER/INCREASER

311P SEE CHART
PLAIN REDUCER 311P



GALVANIZED PIPE

	#300		#336		#448		#301		#301 20	
GAUGE	24	QTY	36	QTY	48	QTY	60	QTY	120	QTY
30	3- 8	25	3	10			3	5	3- 8	5
	9- 12	12					4- 12	10	10	PTO
28	14	12	14-16	10	14 & 16	10	14	10	4	5
	3	12								
26	4- 8	25	16- 20	10	4- 20	10	3	5		
	9- 20	12								
	3- 16	12					4- 18	10		
24	4- 24	12	16- 24	10	4- 24	10	5- 14	10		

Pipe is preassembled for 3 x 120 and 4 x 120 sizes only. It is available in metal racks or on wooden pallets.

INCREASER

312 SEE CHART
INCREASER 312



ROUND DAMPER

314



50 PER BOX 30 PER BOX
4 , 6 7 , 8

20 PER BOX 10 PER BOX PACKAGED TO ORDER
10 , 12 14 , 16 5 , 9 , 18 , 20

GALVANIZED

DRAW BAND

316
12 PER BOX PACKAGED TO ORDER
4 , 5 6 - 18



SC SLEEVE CONNECTOR

SC

12 PER BOX
4 , 5 , 7 , 9 , 10 & 12

6 PER BOX 24 PER BOX 36 PER BOX
14 - 18 8 6



GALVANIZED ADJUSTABLE

THIMBLE

315

PACKAGED TO ORDER
6 - 9



90° ALUMINUM ELBOW

802

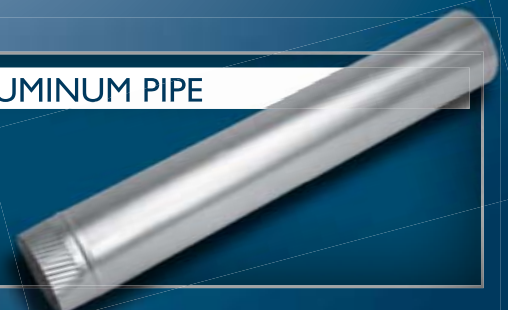
12 PER BOX
3 , 4



24 ALUMINUM PIPE

800

25 PER BOX
3 & 4



3 I I REDUCER

SIZE	QTY
4x3	24
5x4	24
5x3	12
6x4	24
6x5, 3	12
7x6, 5	24
7x4, 3	12
8x6	24
8x5, 4	12
9x8, 7, 6	12
10x9	12
10x8	12
10x7	12
10x6	24
12x10	12
12x9	6
12x8	12
12x6	6
14x12	12
14x10	6
14x8	12
16x14, 12, 10	6
18x16, 14	6
18x12	6
20x18	6
24x18, 20, 22	PTO

3 I I P REDUCER/INCREASER

SIZE	QTY
4x3	24
5x3	12
5x4	24
6x5	24
6x4	24
6x3	12
7x6	24
7x3, 4	12
7x5	24
8x6, 5, 4	24
9x8, 7, 6	12
10x6, 7, 9	12
10x8	24
12x10	12
12x9	6
12x8	12
12x6	6
14x12	12
14x10	6
14x8	12
16x14, 12, 10	6
18x16, 14	6
18x12	6
20x18	6
24x18, 20, 22	PTO

3 I 2 INCREASER

SIZE	QTY
3x4	12
4x5	12
3x5	12
5x6	12
4x6	12
3x6	12
6x7	12
4x7	12
6x8	12
8x9	12
8x10	12
10x12	12
12x14	12

GMS ~ History

1997 - Gray Metal South sells their West Point, Virginia based location and relocates to Dunn, North Carolina to a new 85,000 square foot facility. Necessary expansions of 31,600 square feet are made in 2000, 33,200 square feet in 2005 and 85,000 square feet in 2007. Total production and warehouse space is currently at 235,000 square feet in the Dunn, North Carolina location.

ELBOWS, ANGLES, TEES & WYES



**ADJUSTABLE TURNED
ELBOW** **302**

SEE CHART
ADJUSTABLE ELBOW
AVAILABLE BOXED
OR UNBOXED



**ADJUSTABLE
STRAIGHT ELBOW**

SEE CHART **302ST**
ADJUSTABLE ELBOW

INSET - BOX



ADJUSTABLE ELBOW

GAUGE	#302	QTY	#302ST	QTY
30	3- 12	12	4- 8	12
			10- 12	6
28	3- 9			
	10	PTO		
	12	12		
	14	8	14	4
26	16	PTO		
	3- 12	12	4- 8	12
	14	8	10- 12	6
	16	4	14- 16	4
24	18- 20	PTO		
	3- 12	12		
	14	8		
	16	4		
	18- 24	PTO		



**45°ADJUSTABLE
ANGLE** **303**

SEE CHART
**ADJUSTABLE
ANGLE**

ADJUSTABLE ANGLE

GAUGE	#303	QTY
30	4- 8	24
	9- 12	PTO
26	3, 5, 7- 16	PTO
	4, 6	24
24	5, 7- 12	PTO
	6	24
	14	8



26 GAUGE 24 TALL

EASY FLOW TEE **304-24**

2 PER BOX

12

6 PER BOX

6 , 7 , 8

4 PER BOX

9 , 10

12 PER BOX

3 , 4 , 5



**30 GAUGE GALVANIZED
CORRUGATED ELBOW**

12 PER BOX

3 - 6

302C



REDUCING TEE **305**

PACKAGED TO ORDER



TAPERED FLUE TEE
W/ FULL FLOW WYE

PACKAGED TO ORDER **306**

305I

INCREASING TEE

PACKAGED TO ORDER



OLD STYLE

STUB WYE TEE

306CC

SEE CHART
STUB WYE TEE



STUB WYE TEE

SIZE	QTY	SIZE	QTY
4x3x3	36	10x6x6	8
4x4x4	24	10x7x7	6
5x4x3	24	10x8x6	8
5x4x4	30	10x8x7, 8 10x9x4, 5,	6
6x3x3	30	10x9x7, 8, 9	6
6x4x4	30	12x10x10	3
6x5x5	24	12x10x6, 7, 8	6
6x6x6	12	12x10x9, 10	3
7x4x4	24	12x12x6	4
7x5x5	18	12x12x8	6
7x6x4, 5	18	12x8x8	4
7x6x6	12	12x9x7, 8	6
7x7x5	12	12x9x9	4
8x6x4	18	14x10x8	3
8x6x5, 6	12	14x10x10	2
8x7x4, 5	12	14x12x10, 12	2
8x7x6, 7	10	14x12x6, 7, 8, 9	2
8x8x6, 8	10	14x14x8	2
9x7x5, 6, 7	8	14x14x10, 12	2
9x8x4, 5, 6	10	14x8x8	2
9x8x7, 8	8	20x18x18	PTO
10x10x6, 7, 8	6		

*ALL OTHER SIZES PACKAGE TO ORDER



26 GAUGE

EASY FLOW TEE

304EZ

2 PER BOX

14 - 16

4 PER BOX

9 , 10 & 12

6 PER BOX

3 - 4 : 6 : 8

10 PER BOX

7

12 PER BOX

5

PACKAGED TO ORDER

18 - 20



WYE BRANCH

307

SEE CHART
WYE BRANCH

GMS ~ History

1991 - The Gray family acquires a small competitor by the name of Nova Industries out of West Point, Virginia, renaming the company Gray Metal South, Inc. Current principal owners and operators are Marguerite Gray-Hearn & Joseph E. Gray.

WYE BRANCH

SIZE	BOX QTY
4x3x3	12
4x4x4	12
5x4x3	12
6x4x4	12
6x6x6	12
7x5x5	12
8x6x6	12
8x8x8	6
9x7x7	12
9x8x6	6
9x8x8	6
10x10x10	4
10x6x6	6
10x7x7	6
10x8x6	4
10x8x8	6
12x10x10	4
12x12x12	4
12x8x8	6
14x10x10	4
14x12x12	4
14x14x14	2
16x12x12	2
16x14x14	2
16x16x16	2
18x14x14	2
18x16x16	2
20x16x16	PTO
20x18x18	PTO

*ALL OTHER SIZES PACKAGE TO ORDER



STRAIGHT BOOT 110R

SEE CHART
STANDARD BOOTS



STRAIGHT BOOT 110RF
W/ FLANGE

SEE CHART **STANDARD BOOTS**



STRAIGHT BOOT
W/ PLASTER FRAME

110RPF

SEE CHART **STANDARD BOOTS**

111A

45° ADJUSTABLE BOOT

12 PER BOX

PACKAGE TO ORDER

10 x4 x6
12 x2 x6
12 x4 x6

10 x3 x6
14 x3 x8



112R

CENTER END BOOT

SEE CHART
STANDARD BOOTS



CENTER END BOOT W/ FLANGE

112RF

SEE CHART
STANDARD BOOTS



90° BOOT

113R

SEE CHART
STANDARD BOOTS



ADJUSTABLE ANGLE BOOT

113A

SEE CHART
STANDARD BOOTS



90° BOOT

W/ FLANGE

113RF

SEE CHART
STANDARD BOOTS



EXTENDED

113REA

ANGLE BOOT

SEE CHART
STANDARD BOOTS



90° BOOT

W/ PLASTER FRAME

113RPF

SEE CHART
STANDARD BOOTS



REGISTER BOX

NO FLANGE

331

PACKAGE TO ORDER



REGISTER BOOTS CONTINUED

STANDARD BOOTS

#110R	QTY	#112R	QTY	#113R	QTY
8X4X4	12	8X4X6	12	8X4X6	12
8X4X5	12	8X4X5	12	8X4X5	12
8X4X6	12	8X4X4	12	8X4X4	12
10X2X6	12	10X2X7	12	10X2X7	12
10X2X5	12	10X2X4	12	10X2X4	12
10X2X4	12	10X2X6	12	10X2X6	12
10X4X6	24	10X2X5	12	10X2X5	12
10X4X5	12	10X4X8	12	10X4X8	12
10X4X8	12	10X4X7	12	10X4X7	12
10X4X7	12	10X4X4	12	10X4X4	12
10X4X4	12	10X4X6	12	10X4X6	12
10X6X8	12	10X4X5	12	10X4X5	12
10X6X7	12	10X6X8	12	10X6X8	12
10X6X5	12	10X6X7	12	10X6X7	12
10X6X6	12	10X6X5	12	10X6X5	12
12X6X6	12	10X6X6	12	10X6X6	12
12X2X6	12	12X2X6	12	12X2X6	12
12X2X5	24	12X2X5	12	12X2X5	12
12X2X7	12	12X2X8	12	12X2X8	12
12X4X8	12	12X2X7	12	12X2X7	12
12X4X7	12	12X4X5	12	12X4X5	12
12X4X5	12	12X4X6	12	12X4X8	12
12X4X6	12	12X4X8	12	12X4X7	12
12X6X8	12	12X4X7	12	12X4X6	12
12X6X7	12	12X6X8	12	12X6X8	12
12X8X8	12	12X6X7	12	12X6X7	12
14X8X8	12	12X6X6	12	12X6X6	12
14X2X8	12	14X2X8	12	12X8X8	10
14X2X7	12	14X2X7	12	14X2X8	12
14X2X6	12	14X2X6	12	14X2X7	12
14X4X8	12	14X4X8	12	14X4X8	12
14X4X7	12	14X4X7	12	14X4X7	12
14X4X6	12	14X4X6	12	14X4X6	12
14X6X6	12	14X6X8	12	14X6X8	10
14X6X7	12	14X6X7	12	14X6X7	10
14X6X8	12	14X6X6	12	14X6X6	12
14X6X9	10	14X8X8	10		
14X8X10	8				
14X8X7	12				
14X8X9	12				
16X6X8	10				
16X6X9	10				
16X8X10	10				

INSULATED CEILING OUTLETS & REGISTER BOXES



CENTER
END BOOT
W/ R6 OR R4
INSULATION

SEE CHARTS **112IN4** **112IN6** **112IN4** **112IN6**



INSULATED SIDE
MOUNT BOOT
W/ R6 OR R4
INSULATION

SEE CHARTS **113IN4** **113IN6** **113IN4** **113IN6**



INSULATED BOX
W/ FLANGE 4 OR 6
DEEP W/ R4, R6 OR R8
INSULATION

SEE CHARTS **3404F** **3406F** **3408F** **3404F** **3406F** **3408F**



INSULATED BOX
W/ COLLAR NO FLANGE
4 OR 6 DEEP W/ R4, R6
OR R8 INSULATION

SEE CHARTS **3404NF** **3406NF** **3408NF** **3404NF** **3406NF** **3408NF**



INSULATED BOX NO
COLLAR NO FLANGE
4 OR 6 DEEP W/ R4, R6
OR R8 INSULATION

3404NF **3406NF** **3408NF** **3404NF** **3406NF** **3408NF**

112IN4

SIZE	BOX QTY
6x6x5	PTO
6x6x6	PTO
8x4x4	20
8x4x5	16
8x8x6	PTO
8x8x7	PTO
10x6x6	12
10x10x7	PTO
10x10x8	PTO
12x6x6	12
12x6x7	9
12x6x8	PTO
12x8x8	PTO
12x8x9	PTO
12x12x9	PTO
12x12x10	PTO
14x6x8	6
14x6x9	PTO
14x14x10	PTO
14x14x12	PTO
16x6x8	PTO

113RPF

SIZE	BOX QTY
8x4x5	PTO
10x4x5, 6, 7	12
10x6x6, 7	12
10x6x8	PTO
12x4x3	12
12x4x7	10
12x6x6	PTO
12x6x7	8
12x6x8	PTO
14x4x8	PTO

INSULATED CEILING OUTLETS & REGISTER BOXES **CONTINUED**

112IN6

SIZE BOX QTY

6x6x5	PTO
6x6x6	PTO
8x4x5	PTO
8x8x6	PTO
8x8x7	PTO
10x6x6	12
10x10x7	PTO
10x10x8	PTO
12x6x6	12
12x6x7	9
12x6x8	PTO
12x8x8	PTO
12x8x9	PTO
12x12x9	PTO
12x12x10	PTO
14x6x8	6
14x6x9	PTO
14x14x10	PTO
14x14x12	PTO
16x6x8	PTO

113IN6

SIZE BOX QTY

6x6x5	PTO
6x6x6	PTO
8x4x5	PTO
8x8x6	PTO
8x8x7	PTO
10x6x6	12
10x10x7	12
10x10x8	PTO
12x6x6	12
12x6x7	8
12x6x8	6
12x8x8	PTO
12x8x9	PTO
12x12x9	PTO
12x12x10	PTO
14x6x8	6
14x6x9	PTO
14x14x10	PTO
14x14x12	PTO
16x6x8	PTO

113IN4

SIZE BOX QTY

6x6x5	PTO
6x6x6	PTO
8x4x4	PTO
8x4x5	12
8x8x5	PTO
8x8x6	PTO
8x8x7	PTO
10x6x5	PTO
10x6x6	12
10x10x6	PTO
10x10x7	6
10x10x8	PTO
12x6x6	10
12x6x7	9
12x6x8	6
12x8x8	PTO
12x8x9	PTO
12x12x9	PTO
12x12x10	PTO
14x6x8	6
14x6x9	PTO
14x14x10	PTO
14x14x12	PTO
16x6x8	PTO

3404NF-4

SIZE BOX QTY

6x6x4	PTO
6x6x5	PTO
6x6x6	PTO
8x4x5	24
8x8x6	PTO
8x8x7	PTO
8x8x8	PTO
10x10	PTO
10x6x6	20
10x8x7	PTO
12x12	PTO
12x6x6	PTO
12x6x7	10
12x6x8	PTO
12x8x8	PTO
12x8x9	PTO
14x6x8	12
16x6x8	PTO
16x6x9	PTO

3404NF-6

SIZE BOX QTY

10x6x6	12
10x8x7	PTO
12x6x6	10
12x6x7	10
12x6x8	10
12x8x8	PTO
12x8x9	PTO
16x6x8	PTO
16x6x9	PTO
6x6x4	24
6x6x5	24
6x6x6	18
8x4x5	20
8x8x6	12
8x8x7	PTO
8x8x8	PTO

3404F-4 & 3406F-4

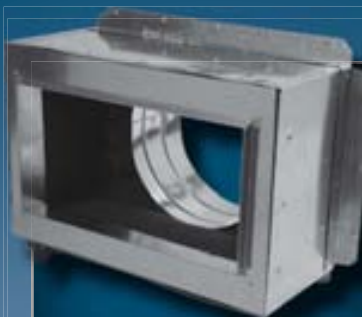
SIZE BOX QTY

10x4x4	12
10x6x4	10
10x6x5	10
10x6x7	8
10x6x8	8
12x4x4	8
12x4x7	8
12x4x8	8

3406TF-6

SIZE BOX QTY

10x6x5	PTO
10x6x6	9
10x6x7	10
12x6x6	10
12x6x7	12
12x6x8	12
12x8x8	PTO
12x8x9	PTO
14x6x8	PTO
14x6x9	PTO
14x8x9	PTO
16x6x8	PTO
6x6x4	PTO
6x6x5	12
6x6x6	PTO
8x4x5	PTO
8x8x6	9
8x8x7	PTO



TOP FLANGE

INSULATED BOX

3406TF-6

SEE CHART
3406TF-6



3604FS

3606FS

3608FS

SLANT TOP BOOT

W/ FLANGE & R4, R6

OR R8 INSULATION

SEE CHART
3604FS
3606FS
3608FS

3406F-6 & 3408F-6

SIZE BOX QTY

10x10x7	PTO
10x10x8	PTO
10x6x6	10
12x12x8	PTO
12x12x9	PTO
12x6x6	9
12x6x7	9
12x6x8	9
12x8x8	PTO
12x8x9	PTO
14x6x8	PTO
14x6x9	PTO
16x6x8	PTO
16x6x9	PTO
6x6x4	PTO
6x6x5	PTO
6x6x6	PTO
8x4x5	PTO
8x8x6	PTO
8x8x7	PTO
8x8x8	PTO

3406NF-4 & 3408NF-6

SIZE BOX QTY

10x6x5	PTO
10x6x6	PTO
12x6x6	PTO
12x6x7	PTO
12x6x8	PTO
14x6x8	12
6x6x4	PTO
6x6x5	PTO
6x6x6	PTO
8x4x5	24
8x8x6	PTO
8x8x7	PTO
8x8x8	PTO



**INSULATED BOOT W/
FLANGE & ANGLE W/ R4, R6
OR R8 INSULATION**

3604FA

3606FA

3608FA

8 PER BOX **12 x6 x7**

PACKAGE
TO ORDER

10 x4 x6	10 x6 x7	14 x6 x8
10 x6 x4	12 x4 x6	8 x4 x4
10 x6 x5	12 x4 x7	8 x4 x5
10 x6 x6	12 x6 x6	_____

INSULATED CEILING OUTLETS & REGISTER BOXES **CONTINUED**

3604FS

SIZE	BOX QTY
10x4x4	1
10x4x5	1
10x4x6	11
10x4x7	1
10x6x4	12
10x6x6	11
10x6x7	10
10x6x8	10
12x4x6	1
12x4x7	1
12x4x8	1
12x6x6	1
12x6x7	10
12x6x8	1
14x4x8	1
14x6x8	8
8x4x5	12



**INSULATED SLANT
TOP BOX NO FLANGE**

3604NFS

3606NFS

PACKAGE TO ORDER

10 x 6 x 6 | 12 x 6 x 7 | 14 x 6 x 8 | 8 x 4 x 5

3608FS

SIZE	BOX QTY
10x4x6	11
10x6x4, 5	12
10x6x6	11
10x6x7, 8	10

3404F-6

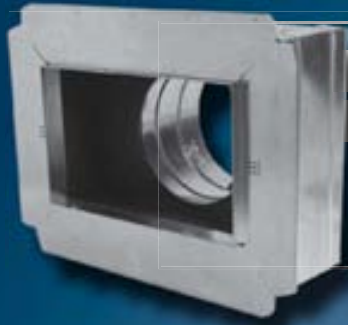
SIZE	BOX QTY
10x10x7	PTO
10x10x8	PTO
10x6x6	12
12x12x8	PTO
12x12x9	PTO
12x6x6	9
12x6x7	10
12x6x8	10
12x8x8	PTO
12x8x9	PTO
14x6x8	9
14x6x9	PTO
16x6x8	PTO
16x6x9	PTO
6x6x4	PTO
6x6x5	PTO
6x6x6	18
8x4x5	16
8x8x6	PTO
8x8x7	PTO
8x8x8	PTO

3406NF-6

SIZE	BOX QTY
6x6	PTO
6x6x4	PTO
6x6x5	24
6x6x6	18
8x4x4	PTO
8x4x5	20
8x8	PTO
8x8x5	12
8x8x6	12
8x8x7	12
8x8x8	PTO
10x10	10
10x6x5	12
10x6x6	12
10x6x7	12
12x6x6	10
12x6x7	12
12x6x8	10
12x8x8	PTO
12x8x9	PTO
14x6x8	9
14x6x9	PTO
14x8x9	PTO
16x6x8	PTO
16x6x9	PTO

3606FS

SIZE	BOX QTY
10x4x4	1
10x4x5	1
10x4x6	11
10x4x7	1
10x6x4	12
10x6x5	12
10x6x6	11
10x6x7	10
10x6x8	10
12x4x6	1
12x4x7	1
12x4x8	1
12x6x6	1
12x6x7	1
12x6x8	1
14x4x8	1
14x6x8	1
6x6x6	1
8x4x5	1



**INSULATED BOOT W/ FLANGE &
COLLAR W/ R6 OR R8 INSULATION**

SEE CHART **3606F** **3606F**
3608F **3608F**

3900

SIZE	BOX QTY
12 x12 x8	PTO
14 x14 x8	PTO
14 x20 x8	PTO
14 x20 x6	PTO
14 x24 x8	PTO
14 x30 x8	PTO
16 x20 x6	PTO
20 x20 x8	PTO
20 x25 x8	PTO
20 x25 x6	PTO



**RETURN
INSULATED BOX
NO FLANGE
W/ R6 OR R8
INSULATION**

SEE CHART **3900** **3900**

3800F

SIZE	BOX QTY
10x10	12
10x4	PTO
10x6	18
10x8	PTO
1212x1212	8
12x10	PTO
12x12	8
12x4	PTO
12x6	15
1412x1412	5
14x14	5
14x20	PTO
14x6	15
14x8	PTO
1612x1612	4
16x16	5
1812x1812	4
18x18	4
2012x2012	4
20x20	4
20x25	4
20x30	PTO
6x4	PTO
8x4	PTO
8x6	PTO
8x8	18

3606F & 3608F

SIZE	BOX QTY
10x10x5	PTO
10x10x6	PTO
10x10x7	PTO
10x4x4	12
10x4x5	12
10x4x6	12
10x6x4	10
10x6x5	10
10x6x6	10
10x6x7	8
10x6x8	8
12x12x8	PTO
14x14x10	PTO
14x14x12	PTO
14x4x6	6
14x6x7	6
14x6x8	6
14x8x8	PTO
6x6x6	PTO
8x4x4	16
8x4x5	16
8x4x6	12



**INSULATED BOX
W/ FLANGE &
DUCTBOARD
BACKING W/ R6 OR
R8 INSULATION**

SEE CHART **3800F** **3800F**

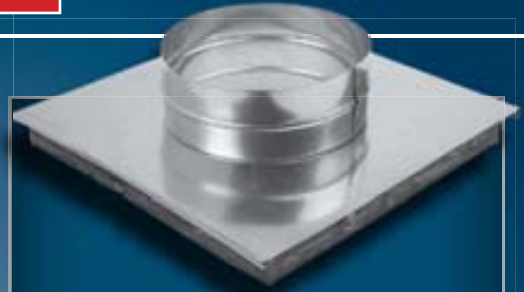
INSULATED WYE PANELS & ENDS



**END PANEL - INSULATED
TRIANGLE END PANELS**

307INEND

PACKAGE TO ORDER



**SQUARE INSULATED SIDE
PANEL WITH COLLAR**

307INPANEL

PACKAGE TO ORDER



INSULATED TRIANGLE WYE

307IN4

307IN6

PACKAGE TO ORDER

FIRE DAMPER BOOTS & BOXES



**FIRE DAMPER BOOT
EXTENDED ANGLE
W/ FLANGE & DAMPER**

113REAFD

SEE CHART **113REAFD**



**EXTENDED ANGLE
FIRE DAMPER BOOT
WITH DAMPER**

113READ

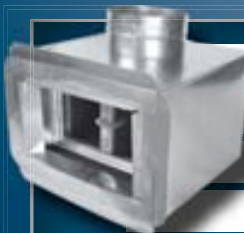
SEE CHART **113READ**



**TOP MOUNT
INSULATED
RADIATION FIRE
DAMPER BOX
W/ FLANGE
W/ R4, R6 OR R8
INSULATION**

210

PACKAGE
TO ORDER



**SIDE MOUNT
INSULATED
RADIATION FIRE
DAMPER BOX
W/FLANGE
W/ R4, R6 & R8**

PACKAGE TO ORDER


213

113REAFD

SIZE	BOX QTY
8x4x4	12
8x4x5	12
10x4x4	12
10x4x5	12
10x4x6	12
10x4x7	PTO
10x6x4	12
10x6x5	12
10x6x6	12
10x6x7	PTO
10x6x8	PTO
12x4x6	12
12x4x8	PTO
12x6x6	8
12x6x7	8
12x6x8	8
12x12x8	PTO
14x6x8	6
14x6x9	6


113READ

SIZE	BOX QTY
8x4x4	12
10x4x4	12
10x4x5	12
10x4x6	12
10x6x5	12
10x6x6	12
10x6x7	PTO
12x4x8	PTO
12x6x7	8
12x6x8	8
14x6x8	6
14x6x9	6




AIR TITE ADHESIVE COLLAR

12 PER BOX	6 PER BOX	400A
4 - 9	10 - 16	
4 PER BOX	PACKAGE TO ORDER	
18 - 20	22	



AIR TITE ADHESIVE COLLAR W/ DAMPER

12 PER BOX	6 PER BOX	4 PER BOX	400AD
4 - 9	10 - 16	18 - 20	



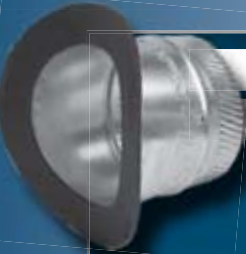
AIR TITE ADHESIVE COLLAR W/ SCOOP & DAMPER

12 PER BOX	6 PER BOX	4 PER BOX	400ASD
4 - 9	10 - 16	18 - 20	




AIR TITE ADHESIVE COLLAR W/ SCOOP

12 PER BOX	6 PER BOX	400AS
4 - 9	10 - 16	



AIR TITE SADDLE /PIPE TAKEOFF

12 PER BOX	6 PER BOX	406A
4 - 5	10 - 14	
7 - 9		
24 PER BOX	4 PER BOX	
6	18 - 20	




AIR TITE SADDLE /PIPE W/DAMPER

12 PER BOX	6 PER BOX	4 PER BOX	406AD
4 - 9	10 - 14	16 - 18	



AIR TITE SADDLE /PIPE W/SCOOP

12 PER BOX	6 PER BOX	4 PER BOX	406AS
4 - 9	10 - 14	16	



AIR TITE SADDLE /PIPE W/SCOOP & DAMPER

4 PER BOX	6 PER BOX	406ASD
16	10 - 14	
12 PER BOX	PACKAGE TO ORDER	
4 - 9	16	



***DETAIL**
PROTECTIVE PAPER
PEELED BACK

GMS ~ History
2007 - Gray Metal South in Humboldt, TN is founded by Joseph E. Gray. Operations became official February 15th, 2008.

TAKEOFFS - AIR TITE CONTINUED



**CONICAL AIR TITE
FITTING** **408A**
PACKAGE TO ORDER



**CONICAL AIR TITE
FITTING W/DAMPER** **408AD**
PACKAGE TO ORDER





**CONICAL AIR TITE
FITTING W/SCOOP
& DAMPER** **408ASD**
PACKAGE TO ORDER




**CONICAL AIR TITE
FITTING W/DAMPER
& QUADRANT
STANDOFF** **408ADQ**
PACKAGE TO ORDER
MODEL 408ADH AVAILABLE WITH AN
ECONOMY STANDOFF

SPIN FITTINGS - METAL




SPIN FITTING (METAL) **400M**
12 PER BOX **6 - 8**
PACKAGE TO ORDER **4 - 5 | 9 - 16**
 **INSET**




**SPIN FITTING (METAL)
W/ DAMPER** **401M**
12 PER BOX **6 - 8** PACKAGE TO ORDER **5 | 10 - 14**




**SPIN FITTING W/ SCOOP
(METAL)** **402M**
PACKAGE TO ORDER **6 , 8 , 10 - 14**



**SPIN FITTING W/SCOOP
& DAMPER (METAL)** **403M**
12 PER BOX **6 - 8** PACKAGE TO ORDER **4 | 10 - 18**



**CONICAL SPIN
REDUCER (METAL)** **411**
PACKAGE TO ORDER



**SPIN FITTING W/SCOOP
& DAMPER (METAL)
WITH H STANDOFF** **403MH**
12 PER BOX **6 - 8** PACKAGE TO ORDER **4 | 10 - 18**



**CONICAL SPIN REDUCER
W/ SCOOP & DAMPER (METAL)** **411SD**
PACKAGE TO ORDER



**CONICAL SPIN REDUCER
(METAL)** **411D**
PACKAGE TO ORDER

SPIN FITTINGS - DUCTBOARD



SPIN FITTING (DUCTBOARD)

12 PER BOX **6, 8** **400D**

PACKAGE TO ORDER **5 | 9 - 12 | 16 - 18**



SPIN FITTING (DUCTBOARD)

WITH DAMPER **401D**

12 PER BOX **6 - 8**

PACKAGE TO ORDER **5**



SPIN FITTING (DUCTBOARD)

WITH SCOOP **402D**

12 PER BOX **6**

PACKAGE TO ORDER **4 - 5**



SPIN FITTING

W/ SCOOP & DAMPER
(DUCTBOARD) **403D**

12 PER BOX **7 - 8**

PACKAGE TO ORDER **4 - 6 | 9 - 16**

METAL STARTING COLLARS



A COLLAR 6 LONG, SMALL END

313FG

4 PER BOX **20**

6 PER BOX **18**

10 PER BOX **16**

12 PER BOX **3, 14**

18 PER BOX **10 - 12**

24 PER BOX **8 - 9**

36 PER BOX **4 - 7**

PACKAGE TO ORDER **22 - 24**



FLEX DUCT METAL STARTING COLLAR W/ CLICK CLICK

313FGCC

75 PER BOX **5 - 6**

40 PER BOX **7 - 9**

30 PER BOX **10 - 16**

PACKAGE TO ORDER **18 - 20**

INSET



A COLLAR SMALL END

313SE

24 PER BOX **4**

50 PER BOX **5 - 6**

12 PER BOX **7 - 18**

4 PER BOX **20**



STRAIGHT STARTING COLLAR WITH DAMPER

326

6 PER BOX **18**

10 PER BOX **16**

12 PER BOX **12 - 14**

18 PER BOX **10**

24 PER BOX **4 - 9**

PACKAGE TO ORDER **3 | 22**

DUCTBOARD STARTING COLLARS



TAB COLLAR FOR 1 AND 1/2 INCH DUCTBOARD

404D

4 PER BOX **20** 6 PER BOX **18** 8 PER BOX **16** 10 PER BOX **14** 12 PER BOX **8, 12**
 18 PER BOX **10** 24 PER BOX **4, 5, 6, 7 & 9** PACKAGE TO ORDER **22**

404D2

TAB COLLAR FOR 2 INCH DUCTBOARD

6 PER BOX **18** 8 PER BOX **16** 10 PER BOX **14**
 12 PER BOX **8, 12** 18 PER BOX **10** 24 PER BOX **4, 5, 6, 7 & 9**



DUCTBOARD - CLICK CLICK COLLAR - UNASSEMBLED

404DCC

12 PER BOX **20** 14 PER BOX **18** 16 PER BOX **12 - 16** 24 PER BOX **9 - 10**
 30 PER BOX **8** 40 PER BOX **5, 7** 50 PER BOX **6** 60 PER BOX **4**

405D

TAB COLLAR WITH DAMPER (DUCTBOARD)

4 PER BOX **20** 6 PER BOX **18** 8 PER BOX **16** 8 PER BOX **16**
 10 PER BOX **14** 12 PER BOX **8, 10, 12** 24 PER BOX **5, 6, 7 & 9**



OVAL PIPE AND FITTINGS



ONE PIECE VERTICAL
 OVAL ELBOW

502-0

12 PER BOX **5 - 8**



60 OVAL PIPE

500-0

5 PER BOX **5 - 8**



ONE PIECE VERTICAL
 OVAL ANGLE

503-0

12 PER BOX **5 - 7**



4-PIECE FLAT
 OVAL ELBOW

502-OF

12 PER BOX **5 - 7**



ROUND TO OVAL END BOOT

12 PER BOX **5 - 7** **504-0**



ROUND TO OVAL 90° BOOT

12 PER BOX **5 - 7** 16 PER BOX **6** **505-0**



**ROUND TO OVAL
STRAIGHT BOOT** 506-0
12 PER BOX



OVAL STACK HEAD 507-0
SEE CHART 507-0



507OD **DOUBLE OVAL STACKHEAD**
12 PER BOX
10 x6 x5 , 6 , 4 | 12 x6 x7

507-0	
SIZE	BOX QTY
8x6x4, 5, 6	12
10x4x5, 6, 7	12
10x6x4, 5, 6, 7	12
12x4x6, 7	12
12x6x5, 6, 7	12
14x6x7	12

VENTING AND ROOF PRODUCTS



ROOF FLASHING 1200
6 PER BOX
4 , 5 , 6 & 8
PACKAGE TO ORDER 10



TALL FLASHING 1212
PACKAGE TO ORDER
4 -8 , 10



TALL FLASHING CAP 1227
PACKAGE TO ORDER



TALL FLASHING CAP 1251
PACKAGE TO ORDER



CHIMNEY CAP 327
12 PER BOX 3 - 8



**OLD STYLE SHANTY CAP
ROUND** 327OFF
PACKAGE TO ORDER



FRESH AIR INTAKE 329
PACKAGE TO ORDER
4 , 5 , 6 , 8 , 10 & 12



STORM COLLAR 335
12 PER BOX 3 - 8
PACKAGE TO ORDER 10



VERTICAL DRAFT DIVERTER

PACKAGE TO ORDER **3 -10** **350**

3" X 50' VINYL DRYER HOSE

3X50-HOSE

4" X 50' VINYL

DRYER HOSE

4X50-HOSE



PACKAGE TO ORDER



WIND BAND VENT CAP **351**

PACKAGE TO ORDER **3 -12**



8 ALUMINUM ROOF JACK

PACKAGE TO ORDER **806**

7 x7 | 10 x10



**FOUNDATION VENT
W/ SCREEN & CAULK**

FV

PACKAGE TO ORDER **4 , 6 & 8**

GNV

GOOSE NECK VENT

15 PER BOX **4**

PACKAGE TO ORDER **7**



**6 ADJUSTABLE ROUND
DIFFUSERS (ALSO IN 8)**

25 PER BOX **6**

6-DIFF

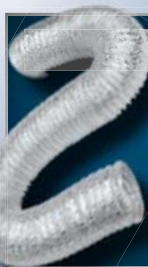
10 PER BOX **8**



8 ALUMINUM ROOF JACK

12 PER BOX

RV



ALUMINUM FLEX DUCT **801**

25 PER BOX **3** 4 PER BOX **7 , 8 & 10**

16 PER BOX **4** 2 PER BOX **9**

9 PER BOX **5 , 6** PACKAGE TO ORDER **12 -16**



**ALUMINUM DRYER
VENT KIT** **804**

PACKAGE TO ORDER **4 & 5**



ALUMINUM WALL CAP **805**

PACKAGE TO ORDER **10 x3**



**ALUMINUM DRYER
VENT HOOD** **807**

10 PER BOX **3 & 4**

PACKAGE TO ORDER **5 -8**

* 3 & 4 DIAMETERS COME WITH 10 TAIL,
ALL OTHER DIAMETERS COME WITH 3 TAIL.



**WHITE ULTRA FLOW HOOD
NO TAIL** **WHB**



**WHITE ULTRA FLOW
HOOD WITH 6 TAIL**

24 PER BOX **3 & 4** **WHAB6**



WHITE LOUVER FACE PLATE

12 PER BOX **3, 4, 5 & 6** **WLB**

BROWN LOUVER FACE PLATE

12 PER BOX **3 & 4** **BLB**

* ALL BLACK IS 24 GAUGE

BLACK PIPE, ELBOWS & ACCESSORIES



24 BLACK STOVE PIPE **600**

12 PER BOX **4 -9**



BLACK ADJUSTABLE ELBOW **602**

12 PER BOX **4 -8** 4 PER BOX **9**



BLACK CORRUGATED ELBOW

12 PER BOX **5 -8** **602C**



**BLACK CAP LARGE END
WITH NO CRIMP** **603LE**

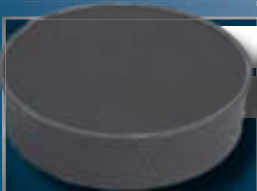
12 PER BOX **5 -8**



BLACK TEE **604**

12 PER BOX **5 & 7**

6 PER BOX **4, 6 & 8** 4 PER BOX **9**



**BLACK SMALL END PLUG
WITH CRIMP** **603SE**

12 PER BOX **6 -8**



BLACK TRIM COLLAR

12 PER BOX **4 -8** **605**



**BLACK CONNECTOR
CRIMP BOTH ENDS** **606**

12 PER BOX **5 x6 | 7 x6
8 x6, 8**

10 PER BOX **6 x6**

607LE **BLACK SLIP JOINT**

12 PER BOX **6, 7 & 8**



ROUND TO OVAL BLACK BOOT

610 PACKAGE TO ORDER **7 x7**


12 PER BOX **6 x6 | 7 x6 | 8 x8**




BLACK PIPE, ELBOWS & ACCESSORIES CONTINUED




BLACK COAL HOD WITH SHOVEL
 6 PER BOX **BHOD**
 * ALSO AVAILBLE GALVANIZED - PART GHOD



BLACK REDUCER OR INCREASER **611**
 12 PER BOX
 6 x5 | 7 x6 | 8 x6 , 7
612 12 PER BOX 5 x6 | 7 x8 | 6 x7 , 8




CAST IRON DAMPER **CID**
 12 PER BOX 4 , 5 & 7
 24 PER BOX 8 48 PER BOX 6



BLACK ADJUSTABLE 6 TO 8 FLUESTOP
 12 PER BOX **N/A**


STAINLESS PRODUCTS




36 STAINLESS PIPE **900**
 ALL MODELS PACKAGE TO ORDER **INSET**
 4 -12
 12 **900A**
 18 **900C**
 24 **900B**
 48 **901**



STAINLESS 90° ELBOW **902**
 PACKAGE TO ORDER 4 -12



904 STAINLESS TEE
 PACKAGE TO ORDER 4 -12



STAINLESS INCREASER /REDUCER - PLAIN **911P**
 PACKAGE TO ORDER
 6 x3 , 4 , 5 9 x6 , 7 , 8
 7 x3 , 4 , 5 10 x7 , 8 , 9
 8 x5 , 6 , 7 12 x8 , 9 , 10
 14 x9 , 10 , 12



STAINLESS TEE CAP LE **910**
 PACKAGE TO ORDER 4 -12



STAINLESS SHANTY RAIN CAP
 PACKAGE TO ORDER 4 -12 **927**

NAIL PLATE 16 GAUGE (16 HOLES)

PACKAGE TO ORDER

3 x18

3X18NAILPLATE



ROUND PLASTER FRAME

8 PER BOX

12

442



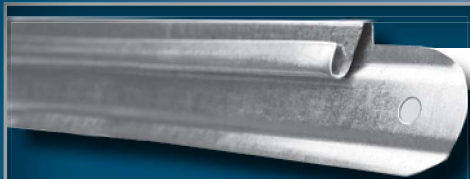
BOOT RAILS

18BOOTRAILS

26BOOTRAILS

100 PER BOX

18 & 26



FHA STRAP - NAILGUARD

1 x12

12-FHASTRAP

PACKAGE TO ORDER

12



LINE COVER

PACKAGE TO ORDER

4 x4 x8

4 x5 x8

4 x6 x4 -96

5 x5 x8



5X5X8LINECOVER

4X4X8LINECOVER

4X5X8LINECOVER

4X6X4-96LINECOVER

CANSTOCK

2X2CANSTOCK

112X10CANSTOCK

25 PER BOX

1 1/2"x2"x10' & 2"x2"x10'



HEATER STAND

MADE TO ORDER

PACKAGE TO ORDER

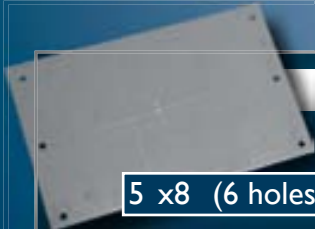


NAIL PLATE

PACKAGE TO ORDER

5 x8 (6 holes)

5X8-NAILPLATE



U CHANNEL

1X1X60-26UCHAN

PACKAGE TO ORDER

1 x1 x60 -26



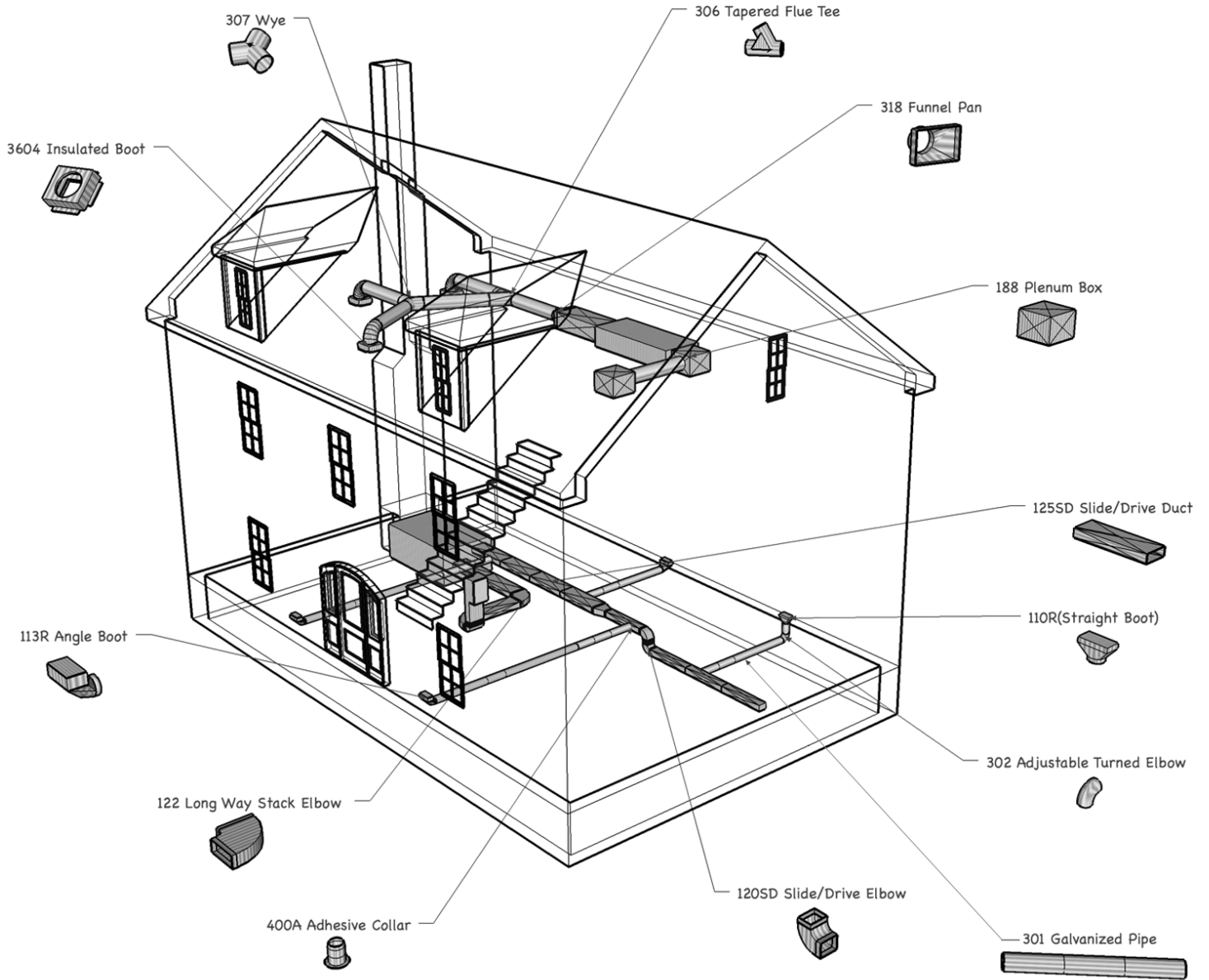
PF

PLASTER FRAME

25 PER BOX

16 , 24 & 26





GRAY METAL SOUTH, INC.

600 North Powell Avenue
P.O. Box 1126
Dunn, NC 28335

Phone: (910) 892-2119
Fax: (910) 892-7053

2901 Hwy. 45 West By-pass
Humboldt, TN 38343

Phone: (731) 784-8662
Fax: (731) 784-8810