

Streamline®

Tube • Fittings • Valves

THE BEST FITTINGS IN THE JOINT.™

The internal working pressures of R410A and Sub-Critical CO2 can be up to 60% higher than R-22. Trust in the quality and performance of a known leader. In fact, Streamline® Copper Fittings from Mueller Industries are the first fittings on the market to be UL Recognized to 700 PSI.

Streamline®

Other Manufacturer

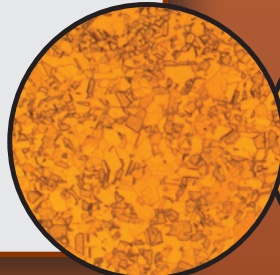
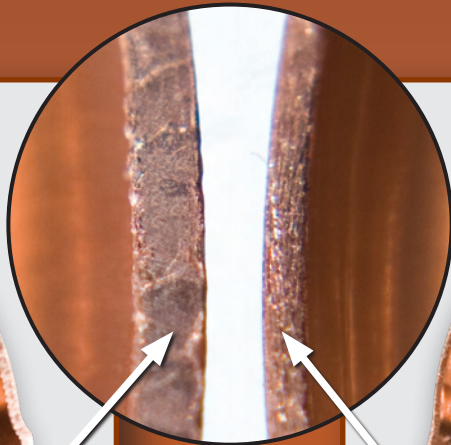
State of the art manufacturing provides consistent wall thickness. Meets ASME B16.22 standard.

Manufacturer mark stamped on every fitting for easy identification.

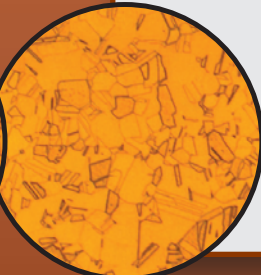
Cup depths are manufactured to strict tolerances for strong and reliable joints.



UL
700 PSI R410A



.055-mm avg. grain
Streamline



.070-mm avg. grain
Other

A smaller, tighter copper grain structure results in a stronger fitting. In these sample magnifications at 100x, Streamline's copper outperforms by over 20%.



Inconsistent, thin walls approximately 20% less than required ASME B16.22 standard.

No manufacturer markings make identification very difficult should problems arise.

Inconsistent cup depths can lead to failures at the joint.

RATINGS, APPROVALS AND ORGIN UNKNOWN

A BRAND OF MUELLER INDUSTRIES