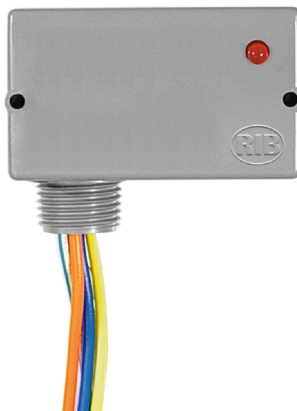
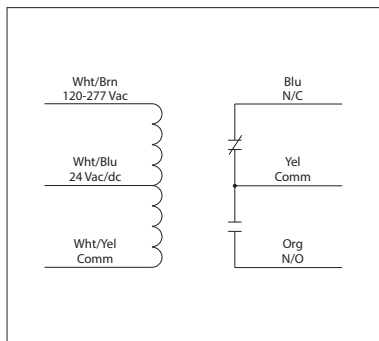


10 AMP PILOT CONTROL RELAYS

RIB2421C

Enclosed Relay 10 Amp SPDT with
24 Vac/dc/120-277 Vac Coil



RIB2421C-RD
• Red housing



RIB2421C-N4
• NEMA 4X housing,
UL508 only



**GREAT SERVICE
TRUCK RELAY**
ONE RELAY COVERS
MOST APPLICATIONS

RELAYS

SPECIFICATIONS

Relays & Contact Type: One (1) SPDT Continuous Duty Coil

Expected Relay Life: 10 million cycles minimum mechanical

Operating Temperature: -30 to 140° F

Humidity Range: 5 to 95% (noncondensing)

Operate Time: 20ms

Relay Status: LED On = Activated

Dimensions: 1.70" x 2.80" x 1.50" with .50" NPT nipple

Wires: 16", 600V Rated

Approvals: UL Listed, UL916, UL864, C-UL California
State Fire Marshal

Housing Rating: UL Accepted for Use in Plenum, NEMA 1

Gold Flash: No

Override Switch: No

Contact Ratings:

10 Amp General Use @ 277 Vac

10 Amp Resistive @ 30 Vdc (N/O)

7 Amp Resistive @ 30 Vdc (N/C)

1/2 HP @ 125 Vac

1 HP @ 250 Vac

1/4 HP @ 277 Vac

C300 Pilot Duty

Coil Current:

66 mA @ 24 Vac

38 mA @ 24 Vdc

40 mA @ 120-277 Vac

Coil Voltage Input:

24 Vac/dc ; 120-277 Vac ; 50-60 Hz

Drop Out = 3 Vac / 3.8 Vdc

Pull In = 20 Vac / 20 Vdc