

Type R632 Integral Two-Stage Regulator

Introduction

The Type R632 is an Underwriters Laboratories listed regulator designed for Two-Stage LP-Gas systems. The unit is designed to reduce the tank pressure through an integral two-stage system to 11-inches w.c. (27,4 mbar). The first-stage screened drip-lip vent is oriented downward and the second-stage vent is oriented over the outlet as standard.



Figure 1. Type R632 Integral Two-Stage Regulator

Features

- **20-Year Recommended Replacement Life –**

The Type R632 is designed using rugged time proven design concepts with enhancements to the corrosion resistance and durability of materials, both internally and externally. With proper installation and periodic inspection and maintenance the R632 design has a 20-Year Recommended Replacement Life. In some environmental conditions earlier replacement may be required.

- **Improved Regulations –** Fisher’s large molded fabric reinforced diaphragm and spring assisted vent stabilizer deliver accurate, stable regulation.

- **Superior Overpressure Protection –** The combination of a high capacity relief valve and large vent provide overpressure protection which exceeds UL standards.

- **Easy System Checks –** Intermediate and outlet 1/8 inch NPT inlet and outlet gauge taps orificed to a number 54 drill size for easy gas system checks.
- **Corrosion-Resistant –** Added corrosion resistance with an internal and external coating process for all castings prior to painting, stainless steel relief valve spring and retainer and a non-corrosive relief valve seat.
- **Positive Drainage –** When installed properly with the spring case pointed down the Fisher Positive Drainage design allows any moisture formed in the spring case to drain out eliminating the problems with corrosion and freezing of the water in the spring case.

Table 1. Ordering Information

TYPE NUMBER	CAPACITY BTU/HR PROPANE ¹	CONNECTIONS INLET X OUTLET	OUTLET ADJUSTMENT SETTING	OUTLET PRESSURE RANGE
R632-BCF	700,000	1/4 inch x 1/2 inch FNPT	11-inches w.c. (27,4 mbar)	9 to 13-inches w.c. (22,4 to 32,4 mbar)
R632-HCF		FPOL x 1/2 inch FNPT		
R632-CFF	750,000	1/4 inch x 3/4 inch FNPT		
R632-JFF		FPOL x 3/4 inch FNPT		

1. Capacities are based on 30 PSIG (2,07 bar) inlet pressure and 2-inches w.c. (5,0 mbar) droop.



Bulletin LP-7: R632

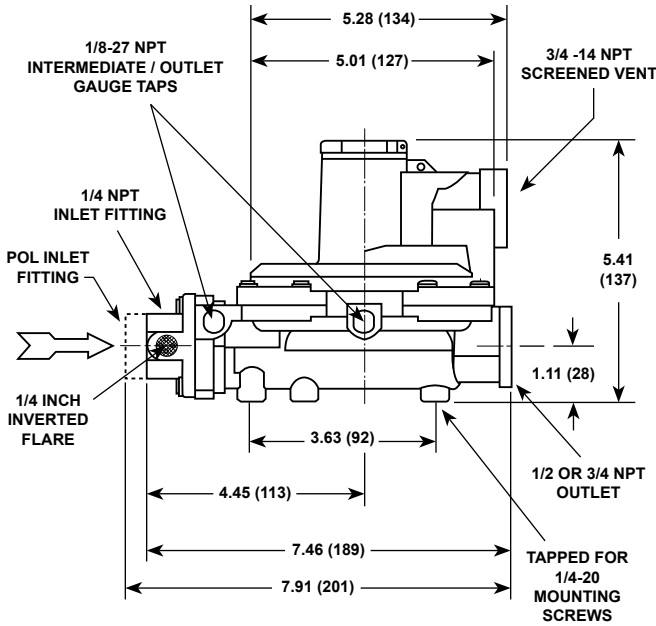


Figure 2. Type R632 Dimensions in Inches (mm)

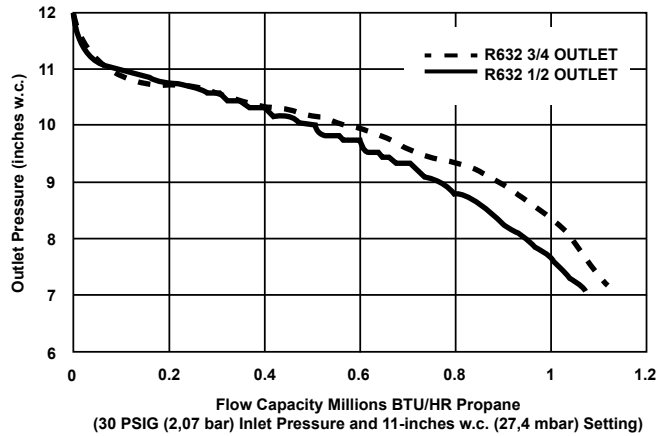


Figure 3. Flow Capacity Curves for Type R632

Table 2. Selected Capacities for Type R632 Integral Two-Stage Regulators

OUTLET PRESSURE SETTING, SPRING RANGE	INLET PRESSURE, PSIG (bar)	CAPACITIES IN THOUSANDS BTU/HR PROPANE ¹	
		1/2 Outlet	3/4 Outlet
11-inches w.c. setting (27,4 mbar), 9 to 13-inches w.c. (22,4 to 32,4 mbar) spring range	25 (1,72)	656	718
	30 (2,07)	778	837
	100 (6,90)	813	1,070
	250 (17,24)	778	750

1. Capacities are based on 2-inches w.c. (5,0 mbar) droop.

LP-Gas Equipment

Emerson Process Management Regulator Technologies, Inc.

USA - Headquarters
McKinney, Texas 75069-1872 USA
Telephone: 1 (800) 558-5853
Telephone: 1 (972) 548-3574

For further information visit www.fisherregulators.com/lp

The Emerson logo is a trademark and service mark of Emerson Electric Co. All other marks are the property of their prospective owners. Fisher is a mark owned by Fisher Controls, Inc., a business of Emerson Process Management.

The contents of this publication are presented for informational purposes only, and while every effort has been made to ensure their accuracy, they are not to be construed as warranties or guarantees, express or implied, regarding the products or services described herein or their use or applicability. We reserve the right to modify or improve the designs or specifications of such products at any time without notice.

Emerson Process Management does not assume responsibility for the selection, use or maintenance of any product. Responsibility for proper selection, use and maintenance of any Emerson Process Management product remains solely with the purchaser.