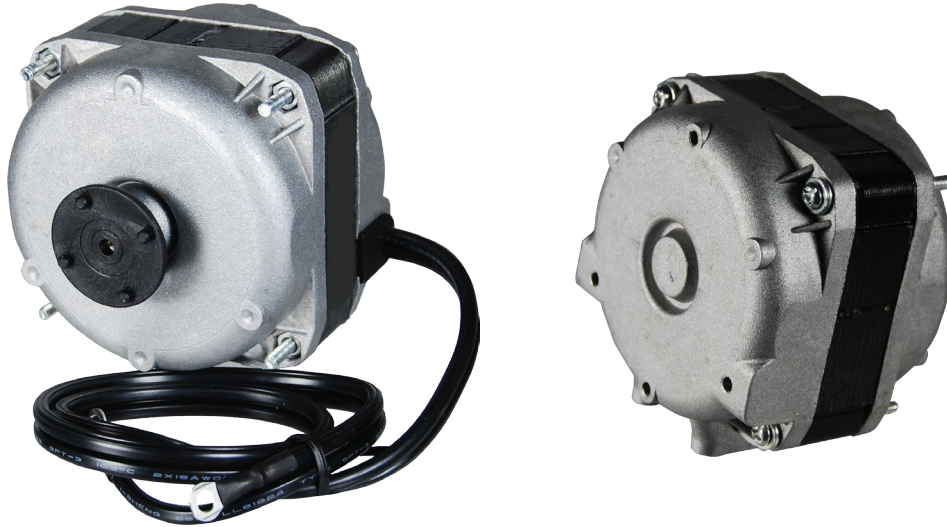


Square Frame Unit Bearing Motors



Applications

- Industrial and commercial refrigeration fans for condensing, ventilating and evaporator units, walk-in and reach-in coolers, freezers, food and beverage chillers.

Features

- All angle self-aligning sleeve bearings
- Totally Enclosed
- Continuous air over
- Class B insulation
- Standard operating temperatures: -40°F to + 104°F (-40°C to +40°C)
- UL listed, CSA approved
- Rear mount: 3 tapped holes #8-36 thread
- Foot mount: 4 holes, #8-36 thread

Item ID	Watts	Volts	RPM	Amps	Rotation	Protection
Packard						
PSQ4CW115	4	115	1550	0.36	CW Lead End	Impedence
PSQ5CW115	5	115	1550	0.40	CW Lead End	Thermal
PSQ6CW115	6	115	1550	0.41	CW Lead End	Impedence
PSQ9CW115	9	115	1550	0.58	CW Lead End	Thermal
PSQ9CW230	9	230	1550	0.35	CW Lead End	Thermal
PSQ18CW115	18	115	1550	1.00	CW Lead End	Thermal
PSQ18CW230	18	230	1550	0.50	CW Lead End	Thermal



For full line of evaporator fan blades, see page 116-117.

