

Up to 92.1% AFUE, Single-Stage, Gas Furnace

EASIER TO SELL

- Up to 92.1% AFUE in upflow, horizontal, and downflow positions
- Single-stage gas valve and fixed-speeds, constant torque ECM.
- Cabinet air leakage less than 2.0% at 1.0 in. W.C. and cabinet air leakage less than 1.4% at 0.5 in. W.C. when tested in accordance with ASHRAE standard 193
- Approved for Manufactured Housing/Mobile Home applications with accessory (order separately)
- Low NOx units are designed for California installations and meet 40 ng/J NOx emissions. Can be installed in air quality management districts with a 40 ng/J NOx emissions requirement.

TOUGHER

- Flame roll-out sensors standard
- Adjustable heating blower OFF delay
- Factory set blower ON delay
- RPJ® primary heat exchanger
- Stainless steel secondary heat exchanger
- High temperature limit control prevents overheating
- Direct ignition with Silicon Nitride ignitor
- High quality, corrosion-resistant, prepainted steel cabinet

EASIER TO INSTALL AND SERVICE

- Direct vent (2-pipe), single-pipe venting or ventilated combustion air
- 24 VAC humidifier terminal & electronic air cleaner terminal
- 35" (889mm) high, for ease of installation
- Simplified, factory installed internal condensate drain system
- Innovative knobs for easy door removal and secure attachment
- Factory shipped for natural gas, with propane gas conversion kits available
- Four position – upflow/downflow/horizontal (left/right) installation
- At least twelve different venting configurations
- Through the casing flue pipe for counterflow or horizontal applications with accessory (order separately)
- Concentric vent available
- Self diagnostics with super bright LED
- Slide out heat exchanger and blower assembly

LIMITED WARRANTY *

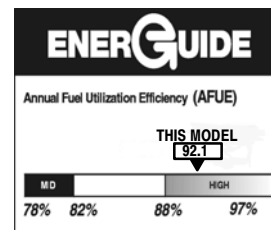
- 20 year heat exchanger limited warranty
- 5 year parts limited warranty
 - With timely registration, an additional 5 year parts limited warranty
- * For residential applications only. See warranty certificate for complete details and restrictions, including warranty coverage for other applications.



Illustrations and photographs are only representative.
Some product models may vary.

WARNING

CARBON MONOXIDE POISONING AND FIRE HAZARD
Failure to follow this warning could result in personal injury, death, and/or property damage.
This furnace is not designed for use in recreation vehicles or outdoors. This furnace is designed for use in manufactured (Mobile) homes when an optional Mobile Home accessory kit is installed.
Failure to follow this warning could result in personal injury, death, and/or property damage.



Use of the AHRI Certified TM Mark indicates a manufacturer's participation in the program. For verification of certification for individual products, go to www.ahridirectory.org.

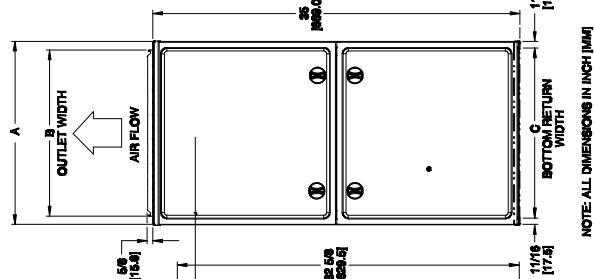
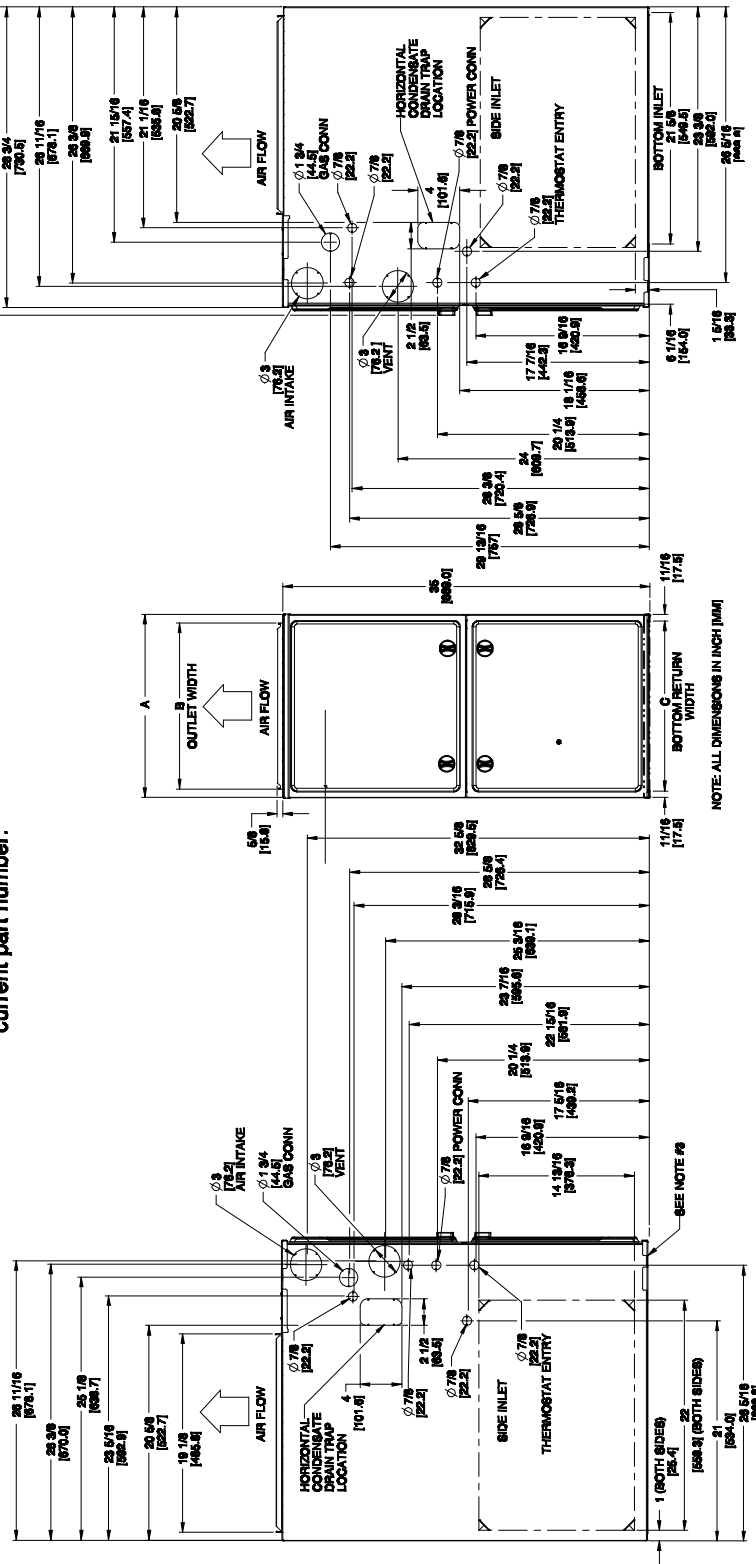
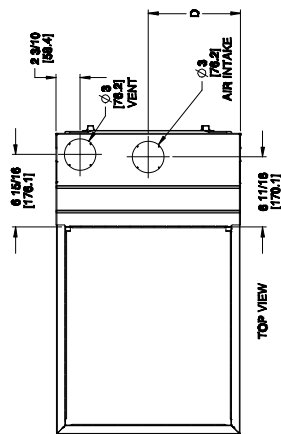
Model Number	Input (MBTUH)	Efficiency AFUE		Cooling Capacity CFM range @ .5 in. w.c. (125 Pa)	Dimensions H x W x D Inches (Millimeters)	Shipping Wt. Lbs (Kg)
		Upflow/Hz	Downflow			
N92ESN0401410A	40,000	92.1%	92.1%	290 – 985	35 x 14-3/16 x 29-1/2 (889 x 361 x 750)	112 (50.8)
N92ESN0401712A	40,000	92.1%	92.1%	350 – 985	35 x 17-1/2 x 29-1/2 (889 x 445 x 750)	122.5 (55.6)
N92ESN0601412A	60,000	92.1%	92.1%	450 – 1035	35 x 14-3/16 x 29-1/2 (889 x 361 x 750)	122 (55.3)
N92ESN0601714A	60,000	92.1%	92.1%	535 – 1190	35 x 17-1/2 x 29-1/2 (889 x 445 x 750)	132 (59.9)
N92ESN0801716A	80,000	92.1%	92.1%	450 – 1365	35 x 17-1/2 x 29-1/2 (889 x 445 x 750)	142 (64.4)
N92ESN0802120A	80,000	92.1%	92.1%	940 – 1815	35 x 21 x 29-1/2 (889 x 533 x 750)	150 (68.0)
N92ESN1002120A	100,000	92.1%	92.1%	945 – 1850	35 x 21 x 29-1/2 (889 x 533 x 750)	160 (72.6)
N92ESN1202420A	120,000	92.1%	92.1%	805 – 1850	35 x 24-1/2 x 29-1/2 (889 x 622 x 750)	183 (83.0)

PHYSICAL DATA									
UNIT SIZE		0401410	0401712	0601412	0601714	0801716	0802120	1002120	1202420
Heating Capacity and Efficiency									
Input	High Heat (BTUH)	40,000	40,000	60,000	60,000	80,000	80,000	100,000	120,000
Output	High Heat (BTUH)	37,000	37,000	56,000	56,000	75,000	75,000	93,000	111,000
Certified Temperature Rise Range °F (°C)	High Heat	35 – 65 (19 – 36)	35 – 65 (19 – 36)	35 – 65 (19 – 36)	35 – 65 (19 – 36)	40 – 70 (22 – 39)	35 – 65 (19 – 36)	40 – 70 (22 – 39)	45 – 75 (25 – 42)
Airflow Capacity and Blower Data									
Rated External Static Pressure (in. w.c.)	Heating	0.1	0.10	0.12	0.15	0.15	0.15	0.20	0.20
	Cooling	0.50	0.50	0.50	0.50	0.50	0.50	0.50	0.50
Airflow Delivery @ Rated ESP (CFM)	Heat	765	740	1100	1000	1350	1460	1675	1735
	Cooling	985	985	1035	1190	1370	1815	1855	1800
Cooling Capacity (tons) @ 400, 350 CFM/ton	400 CFM/ton	2	2.50	2.50	3	3.50	4.50	4.50	4.50
	350 CFM/ton	2.50	3	3	3.50	4	5	5	5
Direct-Drive Motor Type	Electronically Commutated Motor (ECM)								
Direct-Drive Motor HP		1/2	1/2	1/2	1/2	1/2	3/4	3/4	3/4
Motor Full Load Amps		6.4	6.4	6.4	6.4	6.4	8.8	8.8	8.8
RPM Range	600 – 1200								
Speed Selections	5								
Blower Wheel Dia x Width	in.	11 x 7	11 x 8	11 x 7	11 x 8	11 x 8	11 x 10	11 x 10	11 x 11
Air Filtration System	Field Supplied Filter								
Filter Used for Certified Watt Data	NAHA00*06FB								
Electrical Data									
Input Voltage	Volts-Hertz-Phase	115-60-1							
Operating Voltage Range	Min-Max	104-127							
Maximum Input Amps	Amps	7.10	7.10	7.20	7.20	7.20	9.60	9.70	9.70
Unit Ampacity	Amps	9.80	9.80	9.90	9.90	9.90	12.90	13.00	13.00
Minimum Wire Size	AWG	14	14	14	14	14	14	14	14
Maximum Wire Length @ Minimum Wire Size	Feet	37	37	37	37	37	28	28	28
	(M)	(11.50)	(11.50)	(11.40)	(11.40)	(11.40)	(8.70)	(8.70)	(8.70)
Maximum Fuse/Ckt Bkr (Time-Delay Type Recommended)	Amps	15	15	15	15	15	15	15	15
Transformer Capacity (24vac output)	40 VA								
External Control Power Available	Heating	27.9 VA							
	Cooling	34.6 VA							
Controls									
Gas Connection Size	1/2" – NPT								
Burners (Monoport)		2	2	3	3	4	4	5	6
Gas Valve (Redundant)	Manufacturer	White Rodgers™							
Minimum Inlet Gas pressure (in. w.c.)		4.50							
Maximum Inlet Gas pressure (in. w.c.)		13.60							
Manufactured (Mobile) Home Kit	See Accessory Listing								
Ignition Device	Silicon Nitride								
Heating Blower Control (Heating Off-Delay)	Adjustable: 90, 120, 150, 180 seconds								
Cooling Blower Control (Time Delay Relay)	90 seconds								
Communication System	none								
Thermostat Connections	Com 24V, R, W, G, Y								
Accessory Connections	EAC (115vac); HUM (24vac); 1-stg AC (via Y)								

* See Accessory List for part numbers available.

UNIT DIMENSIONS

- NOTES:**
1. Doors may vary by model.
 2. Minimum return-air openings at furnace, based on metal duct. If flex duct is used, see flex duct manufacturer's recommendations for equivalent diameters.
 - a. For 800 CFM-16-in. (406 mm) round or 14 1/2 x 12-in. (368 x 305 mm) rectangle.
 - b. For 1200 CFM-20-in. (508 mm) round or 14 1/2 x 19 1/2-in. (368 x 495 mm) rectangle.
 - c. For 1600 CFM-22-in. (559 mm) round or 14 1/2 x 22 1/16-in. (368 x 560mm) rectangle.
 - d. Return air above 1800 CFM at 0.5 in. w.c. ESP on 24.5" casing, requires one of the following configurations: 2 sides, 1 side and a bottom or bottom only. See Air Delivery table in this document for specific use to allow for sufficient airflow to the furnace.
 3. Vent and Combustion air pipes through blower compartment must use accessory "Vent Kit - Through the Cabinet". See accessory list for current part number.



NOTE: ALL DIMENSIONS IN INCH [MM]

A180202

FURNACE SIZE	A	B	C	D	SHIPPING WT. LBS (KG)
	CABINET WIDTH	OUTLET WIDTH	BOTTOM INLET WIDTH	AIR INTAKE	
0401410	14-3/16 (361)	12-1/2 (319)	12-9/16 (322)	7-1/8 (181)	112 (50.8)
0401712	17-1/2 (445)	15-7/8 (403)	16 (406)	8-3/4 (222)	122.5 (55.6)
0601412	14-3/16 (361)	12-1/2 (319)	12-9/16 (322)	7-1/8 (181)	122 (55.3)
0601714	17-1/2 (445)	15-7/8 (403)	16 (406)	8-3/4 (222)	132 (59.9)
0801716	17-1/2 (445)	15-7/8 (403)	16 (406)	8-3/4 (222)	142 (64.4)
0802120	21 (533)	19-3/8 (492)	19-1/2 (495)	10-1/2 (267)	150 (68.0)
1002122	21 (533)	19-3/8 (492)	19-1/2 (495)	10-1/2 (267)	160 (72.6)
1202422	24-1/2 (622)	22-7/8 (581)	23 (584)	12-1/4 (311)	183 (83.0)

MINIMUM CLEARANCES TO COMBUSTIBLE MATERIALS FOR ALL UNITS

POSITION	CLEARANCE In(mm)
REAR	0
FRONT (Combustion air openings in furnace and in structure)	1 (25)
Required for service	*24 (610)
All Sides of Supply Plenum	*1 (25)
Sides	0
Vent	0
Top of Furnace	1 (25)

* Consult your local building codes.

AIR DELIVERY – CFM (with filter)

FURNACE SIZE	RETURN–AIR CONNECTION	SPEED TAPS	FUNCTION	EXTERNAL STATIC PRESSURE (IN.W.C.)									
				0.10	0.20	0.30	0.40	0.50	0.60	0.70	0.80	0.90	1.00
0401410	SIDE/ BOTTOM	Gray	Cooling. Do not use for heating.	1120	1085	1055	1015	985	950	915	880	850	815
		Yellow	Cooling. Do not use for heating.	925	885	850	810	775	735	695	660	620	580
		Blue	Heating or alt Cooling	765	725	685	640	605	565	525	475	430	375
		Orange	Alt Cooling or alt Heating	750	710	665	625	585	545	500	455	405	350
		Red	Alt Cooling. Do not use for heating.	510	435	400	345	290	230	190	145	–7	–7
0401712	SIDE/ BOTTOM	Gray	Cooling. Do not use for heating.	1120	1090	1055	1020	985	950	915	875	840	805
		Yellow	Cooling. Do not use for heating.	910	880	845	800	760	720	680	640	595	555
		Orange	Alt Cooling or alt Heating	835	795	760	720	680	630	585	540	505	475
		Blue	Heating or alt Cooling	740	700	660	610	565	520	475	440	405	365
		Red	Alt Cooling. Do not use for heating.	555	500	445	395	350	315	260	205	–7	–7
0601412	SIDE/ BOTTOM	Gray	Cooling. Do not use for heating.	1165	1140	1110	1080	1035	1000	960	920	870	825
		Blue	Heating or alt Cooling	1105	1085	1050	1010	975	930	890	845	795	755
		Yellow	Alt Cooling or alt Heating	1040	1000	960	920	880	840	785	740	690	640
		Orange	Alt Cooling or alt Heating	840	795	750	705	655	610	555	500	450	395
		Red	Alt Cooling. Do not use for heating.	745	615	555	510	450	390	340	290	230	195
0601714	SIDE/ BOTTOM	Gray	Cooling. Do not use for heating.	1335	1300	1275	1230	1190	1135	1090	1040	985	925
		Yellow	Alt Cooling or alt Heating	1170	1135	1095	1045	995	940	890	825	770	700
		Blue	Heating or alt Cooling	1010	965	910	855	800	735	675	615	555	505
		Orange	Alt Cooling or alt Heating	960	905	855	800	740	675	615	555	505	460
		Red	Alt Cooling. Do not use for heating.	910	735	675	605	535	485	430	375	330	265
0801716	SIDE/ BOTTOM	Gray	Cooling. Do not use for heating.	1545	1505	1460	1420	1365	1320	1275	1225	1180	1135
		Blue	Heating or alt Cooling	1375	1330	1275	1225	1175	1125	1075	1025	970	920
		Yellow	Alt Cooling or alt Heating	1195	1140	1090	1040	985	930	875	815	765	705
		Orange	Alt Cooling. Do not use for heating.	1015	955	900	845	780	730	670	615	550	490
		Red	Alt Cooling. Do not use for heating.	945	735	575	520	450	375	325	260	–7	–7
0802120	BOTTOM or TWO– SIDES 5, 6	Gray	Cooling. Do not use for heating.	2020	1965	1920	1865	1815	1760	1705	1650	1595	1545
		Yellow	Alt Cooling or alt Heating	1650	1590	1535	1475	1425	1370	1315	1260	1205	1145
		Blue	Heating or alt Cooling	1495	1430	1365	1310	1260	1200	1145	1085	1030	970
		Orange	Alt Cooling or alt Heating	1420	1355	1290	1235	1175	1120	1060	1005	945	890
		Red	Alt Cooling. Do not use for heating.	1200	1120	1060	995	940	875	810	750	685	625
1002120	BOTTOM or TWO– SIDES 5, 6	Gray	Cooling. Do not use for heating.	2060	2010	1955	1905	1850	1800	1750	1690	1630	1565
		Blue	Heating or alt Cooling	1730	1675	1620	1565	1510	1455	1385	1325	1270	1210
		Yellow	Alt Cooling or alt Heating	1685	1630	1570	1515	1460	1410	1345	1280	1225	1170
		Orange	Alt Cooling or alt Heating	1445	1370	1310	1250	1185	1115	1055	1005	950	875
		Red	Alt Cooling. Do not use for heating.	1235	1155	1090	1020	945	900	835	755	690	635
1202420	BOTTOM or TWO– SIDES 5, 6	Gray	Cooling. Do not use for heating.	2070	2020	1965	1910	1850	1790	1725	1660	1605	1550
		Blue	Heating or alt Cooling	1795	1735	1680	1620	1560	1495	1440	1375	1315	1255
		Yellow	Alt Cooling or alt Heating	1465	1400	1340	1270	1210	1150	1090	1030	950	880
		Orange	Alt Cooling. Do not use for heating.	1295	1235	1165	1095	1030	970	905	825	760	700
		Red	Alt Cooling. Do not use for heating.	1095	1020	945	875	805	730	660	585	525	465

NOTE:

1. A filter is required for each return–air inlet. Airflow performance includes a 3/4–in. (19 mm) washable filter media such as contained in a factory–authorized accessory filter rack. See accessory list in sheet. To determine airflow performance without this filter, assume an additional 0.1 in. w.c. available external static pressure.
2. **ADJUST THE BLOWER SPEED TAPS AS NECESSARY FOR THE PROPER AIR TEMPERATURE RISE FOR EACH INSTALLATION.**
3. The “Function” column identifies with speed taps can be used for heating. Shaded areas indicate that this airflow range is **BELOW THE RANGE ALLOWED FOR HEATING OPERATION. THESE AIRFLOW RANGES MAY ONLY BE USED FOR COOLING.**
4. If the same motor speed tap is needed for heating and cooling, a Jumper Wire accessory kit is available, see sheet for the current Jumper Wire accessory part number. Reference the “Start–up, Adjustments, and Safety Check” section in the installation instructions for further Jumper Wire instructions.
5. Airflows over 1800 CFM require bottom return, two–side return, or bottom and side return. A minimum filter size of 20” x 25” (508 x 635 mm) is required.
6. For upflow applications, air entering from one side into both the side of the furnace and a return air base counts as a side and bottom return.
7. The “–” entry indicates an unstable operating condition.

ACCESSORIES										
PART NUMBER	COMPONENT NAME	DESCRIPTION	0401410	0401712	0601412	0601714	0801716	0802120	1002120	1202420
NAHB00101CT	EXTERNAL TRAP KIT	CONDENSATE TRAP	X	X	X	X	X	X	X	X
NAHA00110DA	DRAIN ACCESSORY	1/2" CPVC TO 3/4" PVC (10 PACK)	X	X	X	X	X	X	X	X
NAHA002CV	VENT TERMINATION KIT	2" CONCENTRIC VENT	X	X	X	X	X	X	X	
NAHA001CV		3" CONCENTRIC VENT			X	X	X	X	X	X
NAHA00101VC	INTERNAL VENT KIT	THROUGH THE CABINET	X	X	X	X	X	X	X	X
NAHA00301VT	DIRECT VENT	2" BRACKET	X	X	X	X	X	X	X	
NAHA00401VT	TERMINATION KIT	3" BRACKET			X	X	X	X	X	X
NAHA00101CK	INLET AIR PIPE COUPLING	COUPLING FOR POLYPROPYLENE VENT SYSTEMS	X	X	X	X	X	X	X	X
NAHA00101HV	HORIZONTAL INSTALLATION KIT	TRAP GROMMET (DIRECT VENT APPLICATION ONLY)	X	X	X	X	X	X	X	X
NAHA00101HH	FREEZE PROTECT KIT	CONDENSATE DRAIN LINE - TAPE	X	X	X	X	X	X	X	X
NAHA00201HH	CONDENSATE FREEZE PROTECTION KIT	CONDENSATE TRAP WITH HEAT PAD	X	X	X	X	X	X	X	X
NAHA01101SB	FLOOR BASE KIT	COMBUSTIBLE FLOOR	X	X	X	X	X	X	X	X
AGAGC9NPS01A	GAS CONVERSION KIT*	NATURAL TO PROPANE	X	X	X	X	X	X	X	X
AGAGC9NPS01A	GAS CONVERSION KIT*	PROPANE TO NATURAL	X	X	X	X	X	X	X	X
NAHC00101MH*	MANUFACTURED HOME KIT	GAS CONVERSION KIT	X	X	X	X	X	X	X	X
AGABLRJMP10A	BLOWER TAP KIT	BLOWER SPEED TAP JUMPER KIT (10 PIECE)	X	X	X	X	X	X	X	X
1188594‡	GAS VALVE TOWER PORT ADAPTER KIT	ADAPTER FOR GAS VALVE	X	X	X	X	X	X	X	X
NAHA00506FB†	WASHABLE FILTER PACK	WASHABLE FILTER 1" X 16" X 25" (6 PACK)	X	X	X	X	X			
NAHA00706FB		WASHABLE FILTER 1" 24" X 25" (6 PACK)							X	X
NAHB00501FF	EXTERNAL BOTTOM FILTER RACK (WASHABLE FILTER INCLUDED)	14" X 25" FILTER	X		X					
NAHB00601FF		17-1/2" X 25" FILTER		X		X	X			
NAHB00701FF		21" X 25" FILTER						X	X	
NAHB00801FF		24-1/2" X 25" FILTER								X
NAHB00101CA	COIL ADAPTER KIT	WITH NO OFFSET	X	X	X	X	X	X	X	X
NAHB00201CA		WITH SINGLE OFFSET	X	X	X	X	X	X	X	X
NAHB00301CA		WITH DOUBLE OFFSET	X	X	X	X	X	X	X	X
NAHA01401RA	RETURN AIR KIT	14-3/16" WIDE	X		X					
NAHA01701RA		17-1/2" WIDE		X		X	X			
NAHA02101RA		21" WIDE						X	X	
NAHA02401RA		24-1/2" WIDE								X
NAHA001NK	CONDENSATE NEUTRALIZER KIT	NEUTRALIZES CONDENSATE	X	X	X	X	X	X	X	X

- X Accessory available
- † Suitable for 17 inch external bottom filter rack.
- * Factory authorized and field installed. Gas conversion kits are CSA recognized.
- ‡ Order through FAST Parts.

Part Number	Gas Type	Orifice Size
1185612	Natural	42
1176928	Natural	43
1185574	Natural	44
1177213	Natural	45

Part Number	Gas Type	Orifice Size
1183809	Natural	46
1185613	Natural	47
1185614	Natural	48

Part Number	Gas Type	Orifice Size
1184256	Propane	54
1185615	Propane	55
1185616	Propane	56
1185617	Propane	1.25 mm
1185618	Propane	1.30 mm

