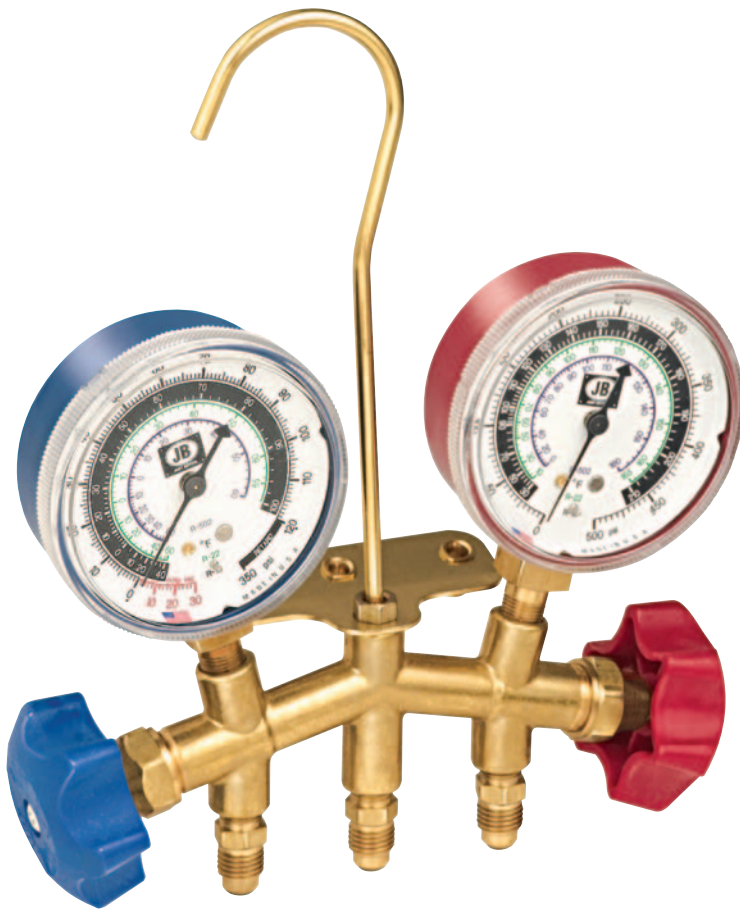


Manifolds

Standard Brass 2-Valve Manifold



made in the USA

Now available for use with R-410A

Now available with larger 3- 1/8" (80 mm) gauges for better visibility

Original free floating dual O-ring sealing system for faster evacuation/ charging

Angled bar with knuckle clearance to better rotate hand wheels

Surge dampened gauges for reduced needle movement

The Industry Standard

An industry standard for countless years, the JB M2 series of manifolds features our full flow design for faster evacuation/ charging. Coupled with an angled bar for better knuckle clearance in rotating the hand wheels and the original free flowing dual O-ring sealing system, the M2 is the classic American made manifold. All of JB's brass manifolds are equipped with heavy duty metal gauge cases for added durability.

Color coded refrigerant dials for easy reading

Plastic hand wheels allow for easy turning.

Pull out proof hanging hook for convenience

For manifold repairs, please refer to the "Repair Parts" section of this catalog beginning on page 60 or refer to our website at www.jbind.com

Replaceable intake/ hose fittings for easy repair

All metal gauges

Gauge features and replacements are detailed on page 25-28.

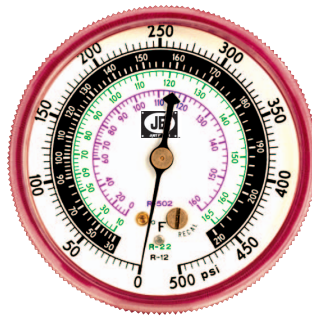
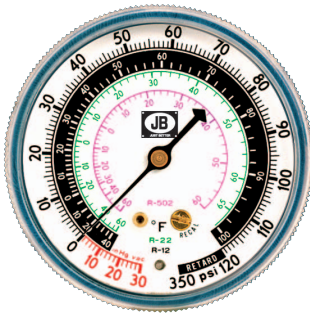
Metric versions are detailed on page 20.

Kobra hoses are detailed in the "Hoses" section beginning on page 34.

Part No.	Description
M2-8-410A	Brass manifold without hose, with two 2-1/2" R-22, R-404A, and R-410A gauges
M2-5-410A	Brass manifold with 60" (152.4 cm) CCLE hoses with 2-1/2" R-22, R-404A, and R-410A gauges
M2-22125	Brass manifold without hose, with 3-1/8" (80mm) R-22, R-134a, and 404A gauges
M2-22131	Brass manifold with 60" (152.4 cm) CCLE hoses, with 3-1/8" (80mm) R-22, R-134a, R404A gauges
M2-22225	Brass manifold without hoses, with 3-1/8" (80mm) R-22, R-404A, R410A gauges
M2-22231	Brass manifold with 60" (152.4 cm) CCLE hoses, with 3-1/8" (80mm) R-22, R-404A, R410A gauges
M2-22525	Brass manifold without hose, with 3-1/8" (80mm) R-410A gauges
M2-22531	Brass manifold with 60" (152.4 cm) CCLE hoses, with 3-1/8" (80mm) R-410A gauges
M2-8	No hose set with R-12, R-22, R-502 gauges
M2-6	1/4" CL hose set (36" red and blue, 60" yellow) with R-12, R-22, R-502 gauges
M2-5	1/4" CL hose set (60" red, blue, and yellow) with R-12, R-22, R-502 gauges
M2-36	1/4" CL hose set (36" red, blue, and yellow) with R-12, R-22, R-502 gauges
M2-12	Bar only

2 1/2" Standard

Gauges

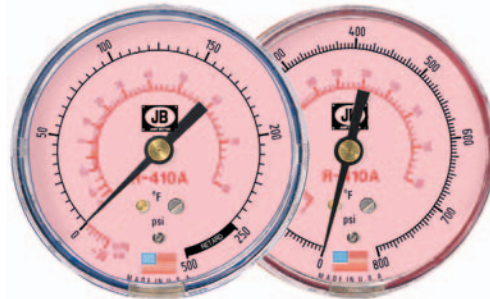
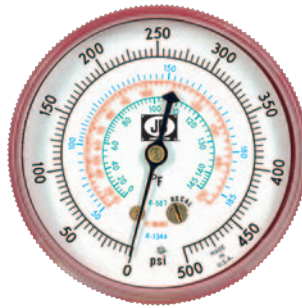


R-12, R-22 and R-502 Refrigerant Gauges

Compound Gauge: 30" vacuum to 120 psi, retard to 350 psi
Pressure Gauge: 0 to 500 psi

R-134a Automotive Gauges

Compound Gauge: 30" vacuum to 120 psi, retard to 350 psi
Pressure Gauge: 0 to 500 psi



R-134a, R-404A and R-507 Refrigerant Gauges

Compound Gauge: 30" vacuum to 120 psi, retard to 350 psi
Pressure Gauge: 0 to 500 psi

R-410A Refrigerant Gauges

Compound Gauge: 30" vacuum to 250 psi, retard to 500 psi
Pressure Gauge: 0 to 800 psi

2 1/2" (63.5 mm) Gauges

These high quality standard gauges are identical to the gauges used on our manifold sets. They are surge dampened for accuracy. Gauges are sensitive instruments and therefore should not be subjected to pressures beyond scale.



made in the USA
Recalibration screw for easy adjustment

Full size brass movements

1/8" MPT brass connection

All steel cases on standard gauges

High Impact clear view Lexan lens for visibility and durability

Refrigerants	Compound steel case	Pressure steel case	Compound steel case Liquid filled	Pressure steel case Liquid filled	Compound brass case	Pressure brass case
R-12, R-22 and R-502	M2-250	M2-500	M2-870	M2-875	M2-250B	M2-500B
R-22, R-134A, and R-404A	M2-430	M2-435	M2-880	M2-885	_____	_____
R-22, R-404, and R-410A	M2-460	M2-465	M2-890	M2-895	_____	_____
R-134a, R-404A, and R-507	M2-420	M2-425	_____	_____	_____	_____
R-134a	M2-350	M2-355	_____	_____	_____	_____
R-410A	M2-410	M2-415	_____	_____	_____	_____

For manifold replacement parts, please refer to "Repair Parts" section beginning on page 60.

For safety reasons, gauges and hoses not specified for R-410A can damage product and cause injury.



Kobra™ High Pressure Hose

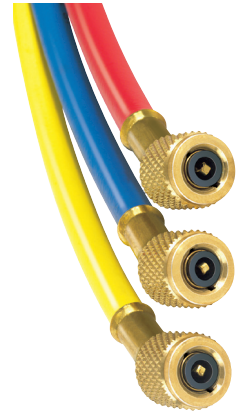
Hoses

Kobra™ CLE Series

Gasket Seal Fitting

Features blowout resistant depressor and barrel gasket

Length	Blue	Yellow	Red	Color coded set	Black
36" (91.4cm)	CLE-36B	CLE-36Y	CLE-36R	CCLC-36	CLB-36
48" (128.4cm)	CLE-48B	CLE-48Y	CLE-48R	CCLC-48	CLB-48
60" (152.3cm)	CLE-60B	CLE-60Y	CLE-60R	CCLC-60	CLB-60
72" (182.7cm)	CLE-72B	CLE-72Y	CLE-72R	CCLC-72	CLB-72



Replacement parts

Part No.	Description
P90513	Depressor
P509	1/4" Gasket

Other size hoses available. For more information, please contact sales@jbind.com or 800.323.0811

Kobra CLBV Series

Gasket Seal Fitting

Features blowout resistant depressor and barrel gasket

Length	Blue	Yellow	Red	Color coded set
60" (152.3cm)	CLBV-60B	CLBV-60Y	CLBV-60R	CCLBV-60



Kobra™ CLV Series

Length	Blue	Yellow	Red	Color coded set
36" (91.4cm)	CLV-36B	CLV-36Y	CLV-36R	CCLV-36
48" (128.4cm)	CLV-48B	CLV-48Y	CLV-48R	CCLV-48
60" (152.3cm)	CLV-60B	CLV-60Y	CLV-60R	CCLV-60
72" (182.7cm)	CLV-72B	CLV-72Y	CLV-72R	CCLV-72

Replacement Parts for CLBV and CLV

Part No.	Description
P90513	Depressor
P509	1/4" Gasket



Whip End Only with Ball Valve (Connects to Hose Fitting)

Length	Blue	Yellow	Red	Color coded set
6" (15.2cm)	CLV-6B	CLV-6Y	CLV-6R	CCLV-6



Whip End Only with 1/4" MPT Fitting (Replacement for CLV)

Length	Blue	Yellow	Red
6" (15.2cm)	CLP-6B	CLP-6Y	CLP-6R

