



**Low Cost, High Power  
Fan Delay, Controls  
Circulating Fan Relay**

## **ICM255 POST PURGE FAN DELAY**

**HBOR**

- Replaces thermal time delays
- OFF delay purges ducts of residual air to increase efficiency

### **MODE OF OPERATION**

Power must be applied before and during the time delay period. When the initiate contact closes, the load energizes and remains energized as long as the initiate contact is closed. The time delay begins when the initiate contact opens. At the end of the time delay period, the load is turned off. If the initiate contact recloses during the time delay period the load remains energized and the time delay is reset to zero. Removal of the input power during the delay turns off the load and resets the time delay to zero. A one second interrogation delay is provided to avoid nuisance trips due to thermostat bounce or tampering.

### **SPECIFICATIONS**

#### **Input**

- **Voltage:** 18-30 VAC
- **Frequency:** 50-60 Hz

#### **Output Ratings**

- **Type:** Relay
- **N.O. contact:** 20 amps resistive
- **N.C. contact:** 10 amps resistive

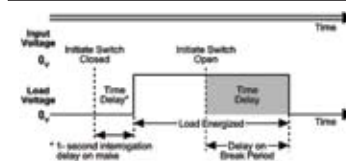
#### **OFF Time Delays**

- **Factory fixed:** 60 seconds

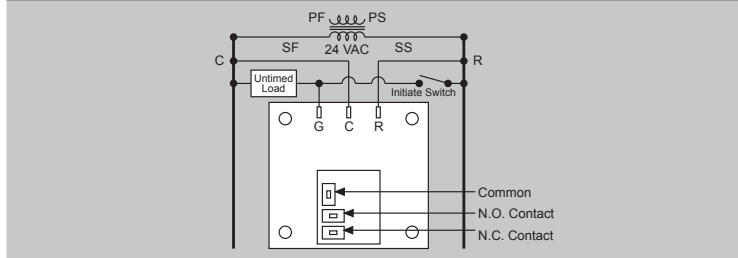
### **INSTALLATION**

1. Disconnect power.
2. Connect terminals as shown in the wiring diagram below.
3. Reapply power, check operation.

### **TIMING DIAGRAM**



### **WIRING DIAGRAM**



**ICM CONTROLS**  
www.icmcontrols.com

7313 William Barry Blvd.  
North Syracuse, NY 13212

**800.365.5525**  
LII040-1