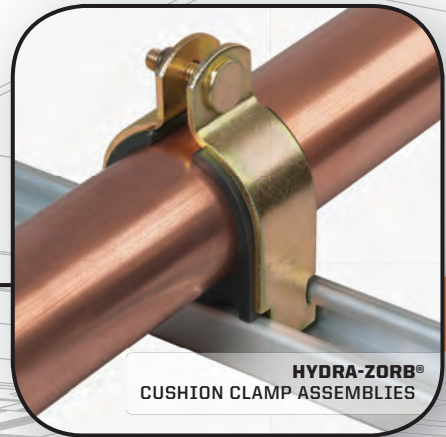


THE ORIGINAL CUSHION CLAMP | SINCE 1966

**HYDRA-
H7ORB**



HYDRA-ZORB®
CUSHION CLAMP ASSEMBLIES



KLO-SHURE®
INSULATION COUPLINGS



TITAN®
INSULATION RISERS



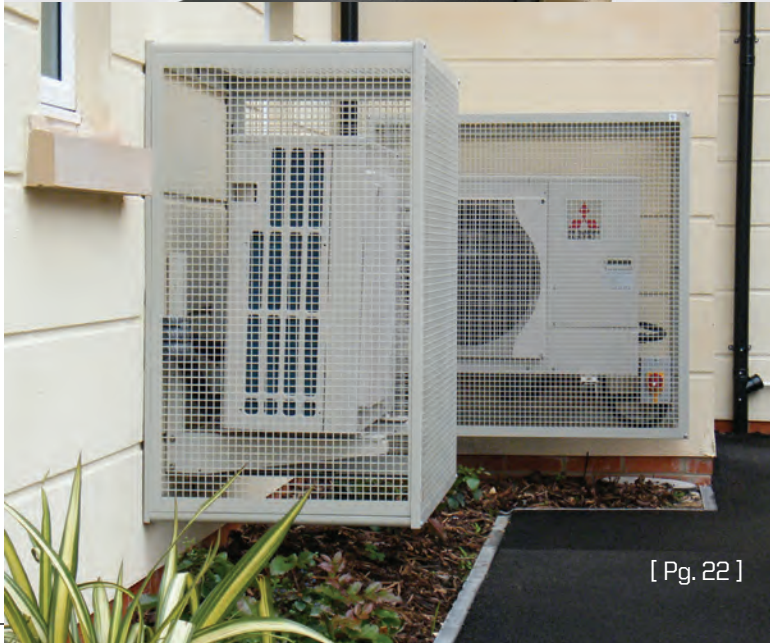
BRONCO®
SUPPORT FOR INSULATED LINES



[Pg. 2]



[Pg. 9]



[Pg. 22]

CONTENTS

Hydra-Zorb

| | |
|--------------------------------------|---|
| Strut Mounted Cushion Clamps | 2 |
| Cushion Clamp Dimensions | 4 |
| Cushion Clamp Load Data | 5 |
| Cushion Clamps for Metric Pipe | 6 |

Bronco

| | |
|----------------------------|---|
| Tube and Pipe Saddle | 7 |
|----------------------------|---|

Klo-Shure

| | |
|---|----|
| Insulation Couplings | 8 |
| 7 - Series | 12 |
| 8 - Series | 14 |
| 9 - Series for Copper Tube and Pipe ... | 15 |
| 9 - Series for Metric Pipe | 16 |
| Part Numbering System | 17 |
| Clevis Hanger | |
| Insulation Couplings | 18 |

Titan

| | |
|------------------------------|----|
| Insulation Riser Clamp | 20 |
|------------------------------|----|

MP Mini-Split Accessories

| | |
|-------------------------|----|
| Mini-Split Guards | 22 |
| VRF / VRV Guards | 23 |
| Mounting Brackets | 24 |
| Collection Trays | 25 |

TRH Hanger System

Anchor Channels

Hydra-Zorb

Component Parts List

Terms & Conditions

| | |
|-------|----|
| | 29 |
|-------|----|



Hydra-Zorb Co. has been the leader in the strut mounted clamp market for over 50 years, offering a wide variety of solutions when shock, vibration and corrosion are a problem.

As the originator of the cushion clamp assembly, Hydra-Zorb is the name to request in the fluid power, pneumatic, HVAC, refrigeration, and plumbing/mechanical industries.

Hydra-Zorb employs cutting-edge technology to manufacture quality products right here in the USA. Moving manufacturing overseas may be easier. It may be cheaper. But that doesn't mean everyone is doing it. Hydra-Zorb built a new 52,000 square-foot manufacturing facility, **to manufacture all of our products in the USA, saving our customers time and shipping expenses.**

We offer custom fabricating services as well. You can count on us to provide you with excellent quality, paired with timely and courteous service. When it comes to needing specialized custom fabricating, please contact our factory and let us take care of your unique needs.

We look forward to working with you.

The Hydra-Zorb Team

STRUT MOUNTED CUSHION CLAMP



Features:

- **Made in USA**
- **Classified 2043 (25/50) for use in plenums and air handling systems**
- Clamps are 1008-1010 carbon steel
- Eliminate shock and vibration
- Studs are projection welded
- Nylon insert locknut
- Resist most fuels, oils, gases, greases, solvents, mineral acids and other harsh materials
- Allow fluid conductors to be added or removed from installations without disturbing adjacent lines
- Assembled or disassembled with a single hand or power wrench for fast and simple installation
- Permit various size lines to be mixed to suit installation
- All metal components have a Tri-Valent (non-hex) plating
- Available in 304 and 316 stainless steel and aluminum
- Cushion material is a thermoplastic elastomer
- Temperature rating: -65°F to +275°F

PART NUMBER SYSTEM

Ordering is simple. First, determine if you require tube or pipe series. Second, determine the size of line to be clamped. That's it.

Example for 3/4" O.D. tube assembly:

| SERIES | DECIMAL INCH |
|--------|--------------|
| 100 | 075 |

Example for 2-1/2" nominal pipe assembly:

| SERIES | DECIMAL INCH |
|--------|--------------|
| 200 | 250 |

All standard clamp assemblies consist of a 6-digit part number. A complete listing of part numbers for the pipe and tube series is on pages 5-6. The clamp assemblies are shown by series 100 and 200 as:

100 = TUBE (O.D. Tube)

200 = PIPE (Nominal Pipe)

Cushion Size is indicated by decimal inch. See examples above.



ADDITIONAL MATERIALS

These are commonly requested materials for special applications. Just add one of the following suffix numbers to your 6-digit part number.

| SERIES | DECIMAL INCH | SUFFIX | |
|--------|--------------|-----------|--|
| _____ | _____ | - 4 - 555 | 304 stainless steel clamps 304 stainless stud (welded) 304 locknut |
| _____ | _____ | - 4 - 565 | 304 stainless steel clamps 316 hex head bolt (loose) 304 locknut |
| _____ | _____ | - 4 - 655 | 316 stainless steel clamps 304 stainless stud (welded) 304 locknut |
| _____ | _____ | - 4 - 666 | 316 stainless steel clamps 316 hex head bolt (loose) 316 locknut |
| _____ | _____ | - 4 - 865 | aluminum (5052) clamps* 316 hex head bolt (loose) 304 locknut |

* Special Orders Only



CUSHION CLAMP DIMENSIONS

TUBE

| PART NO. | O.D. | A | B | C | *D |
|----------|--------|------|------|------|------|
| 100025 | 1/4" | 1.11 | .22 | .075 | .62 |
| 100031 | 5/16" | 1.24 | .28 | .075 | .75 |
| 100037 | 3/8" | 1.24 | .28 | .075 | .75 |
| 100047 | .47" | 1.36 | .34 | .075 | .87 |
| 100050 | 1/2" | 1.36 | .34 | .075 | .87 |
| 100062 | 5/8" | 1.50 | .41 | .075 | 1.00 |
| 100075 | 3/4" | 1.78 | .53 | .075 | 1.33 |
| 100087 | 7/8" | 1.91 | .58 | .075 | 1.45 |
| 100100 | 1" | 2.03 | .66 | .075 | 1.66 |
| 100112 | 1-1/8" | 2.16 | .72 | .075 | 1.79 |
| 100119 | 1.19" | 2.30 | .72 | .105 | 1.92 |
| 100125 | 1-1/4" | 2.30 | .78 | .105 | 1.92 |
| 100137 | 1-3/8" | 2.75 | .91 | .119 | 2.22 |
| 100150 | 1-1/2" | 2.75 | .91 | .119 | 2.22 |
| 100162 | 1-5/8" | 3.03 | 1.03 | .119 | 2.47 |
| 100175 | 1-3/4" | 3.03 | 1.03 | .119 | 2.47 |
| 100187 | 1-7/8" | 3.28 | 1.16 | .119 | 2.47 |
| 100200 | 2" | 3.28 | 1.16 | .119 | 2.72 |
| 100212 | 2-1/8" | 3.53 | 1.28 | .119 | 2.97 |
| 100225 | 2-1/4" | 3.78 | 1.41 | .119 | 3.22 |
| 100237 | 2-3/8" | 3.78 | 1.41 | .119 | 3.22 |
| 100251 | 2-1/2" | 4.03 | 1.53 | .119 | 3.47 |
| 100262 | 2-5/8" | 4.03 | 1.53 | .119 | 3.47 |
| 100300 | 3" | 4.52 | 1.78 | .119 | 3.97 |
| 100312 | 3-1/8" | 4.52 | 1.78 | .119 | 3.97 |
| 100362 | 3-5/8" | 5.03 | 2.03 | .119 | 4.47 |
| 100412 | 4-1/8" | 5.66 | 2.34 | .119 | 5.09 |
| 100500 | 5" | 6.75 | 2.81 | .119 | 6.25 |
| 100512 | 5-1/8" | 6.75 | 2.81 | .119 | 6.25 |
| 100600 | 6" | 7.75 | 3.31 | .119 | 7.50 |
| 100612 | 6-1/8" | 7.75 | 3.31 | .119 | 7.50 |

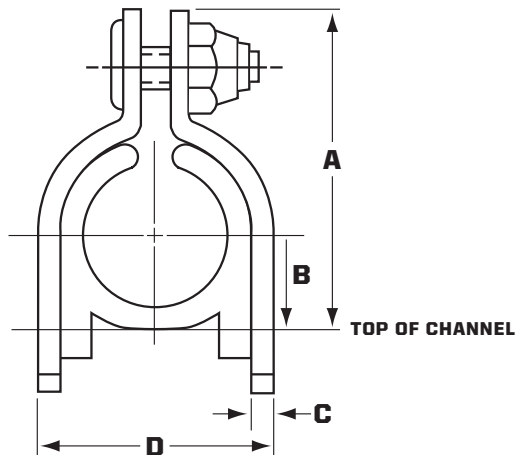
* Minimum Required Installation Dimension

NOMINAL PIPE

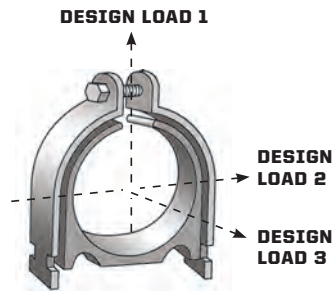
| PART NO. | I.P.S. | A | B | C | *D |
|----------|--------|-------|------|------|------|
| 200025 | 1/4" | 1.41 | .63 | .075 | .91 |
| 200037 | 3/8" | 1.59 | .45 | .075 | 1.07 |
| 200050 | 1/2" | 1.91 | .59 | .075 | 1.45 |
| 200075 | 3/4" | 2.16 | .72 | .075 | 1.79 |
| 200100 | 1" | 2.75 | .91 | .119 | 2.22 |
| 200125 | 1-1/4" | 3.03 | 1.03 | .119 | 2.47 |
| 200150 | 1-1/2" | 3.28 | 1.16 | .119 | 2.47 |
| 200200 | 2" | 3.78 | 1.41 | .119 | 3.22 |
| 200250 | 2-1/2" | 4.27 | 1.66 | .119 | 3.72 |
| 200300 | 3" | 4.91 | 1.97 | .119 | 4.63 |
| 200350 | 3-1/2" | 5.53 | 2.28 | .119 | 4.97 |
| 200400 | 4" | 6.03 | 2.53 | .119 | 5.47 |
| 200500 | 5" | 7.03 | 3.03 | .119 | 6.47 |
| 200600 | 6" | 8.03 | 3.53 | .119 | 7.47 |
| 200800 | 8" | 10.61 | 5.00 | .119 | 9.36 |

* Minimum required installation dimension

For Hoses: Measure hose outside diameter & select nearest OD size.



CUSHION CLAMP LOAD DATA



TUBE

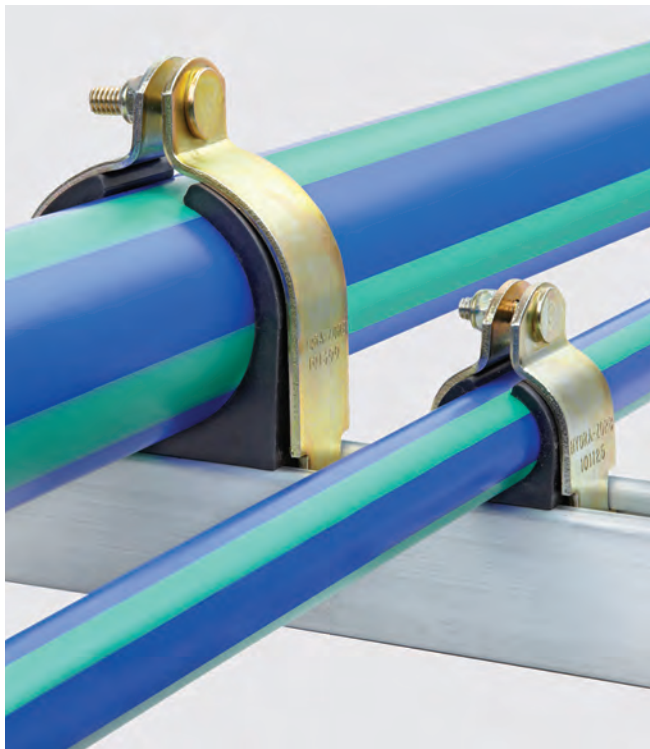
| PART NO. | O.D. | DESIGN LOAD 1 | | DESIGN LOAD 2 | | DESIGN LOAD 3 | |
|----------|--------|---------------|-----------|---------------|-----------|---------------|-----------|
| 100025 | 1/4" | 400 LBS | (1.78) KN | 50 LBS | (0.22) KN | 50 LBS | (0.22) KN |
| 100037 | 3/8" | 400 LBS | (1.78) KN | 50 LBS | (0.22) KN | 50 LBS | (0.22) KN |
| 100050 | 1/2" | 400 LBS | (1.78) KN | 50 LBS | (0.22) KN | 50 LBS | (0.22) KN |
| 100062 | 5/8" | 400 LBS | (1.78) KN | 50 LBS | (0.22) KN | 50 LBS | (0.22) KN |
| 100075 | 3/4" | 600 LBS | (2.67) KN | 75 LBS | (0.33) KN | 75 LBS | (0.33) KN |
| 100087 | 7/8" | 600 LBS | (2.67) KN | 75 LBS | (0.33) KN | 75 LBS | (0.33) KN |
| 100100 | 1" | 600 LBS | (2.67) KN | 75 LBS | (0.33) KN | 75 LBS | (0.33) KN |
| 100112 | 1-1/8" | 600 LBS | (2.67) KN | 75 LBS | (0.33) KN | 75 LBS | (0.33) KN |
| 100125 | 1-1/4" | 600 LBS | (2.67) KN | 75 LBS | (0.33) KN | 75 LBS | (0.33) KN |
| 100137 | 1-3/8" | 600 LBS | (2.67) KN | 75 LBS | (0.33) KN | 75 LBS | (0.33) KN |
| 100150 | 1-1/2" | 600 LBS | (2.67) KN | 75 LBS | (0.33) KN | 75 LBS | (0.33) KN |
| 100162 | 1-5/8" | 600 LBS | (2.67) KN | 75 LBS | (0.33) KN | 75 LBS | (0.33) KN |
| 100175 | 1-3/4" | 800 LBS | (3.56) KN | 125 LBS | (0.56) KN | 125 LBS | (0.56) KN |
| 100187 | 1-7/8" | 800 LBS | (3.56) KN | 125 LBS | (0.56) KN | 125 LBS | (0.56) KN |
| 100200 | 2" | 800 LBS | (3.56) KN | 125 LBS | (0.56) KN | 125 LBS | (0.56) KN |
| 100212 | 2-1/8" | 800 LBS | (3.56) KN | 125 LBS | (0.56) KN | 125 LBS | (0.56) KN |
| 100225 | 2-1/4" | 800 LBS | (3.56) KN | 125 LBS | (0.56) KN | 125 LBS | (0.56) KN |
| 100237 | 2-3/8" | 800 LBS | (3.56) KN | 125 LBS | (0.56) KN | 125 LBS | (0.56) KN |
| 100251 | 2-1/2" | 800 LBS | (3.56) KN | 125 LBS | (0.56) KN | 125 LBS | (0.56) KN |
| 100262 | 2-5/8" | 800 LBS | (3.56) KN | 125 LBS | (0.56) KN | 125 LBS | (0.56) KN |
| 100300 | 3" | 800 LBS | (3.56) KN | 125 LBS | (0.56) KN | 125 LBS | (0.56) KN |
| 100312 | 3-1/8" | 800 LBS | (3.56) KN | 125 LBS | (0.56) KN | 125 LBS | (0.56) KN |
| 100362 | 3-5/8" | 1000 LBS | (4.45) KN | 200 LBS | (0.89) KN | 150 LBS | (0.67) KN |
| 100412 | 4-1/8" | 1000 LBS | (4.45) KN | 200 LBS | (0.89) KN | 150 LBS | (0.67) KN |
| 100512 | 5-1/8" | 1000 LBS | (4.45) KN | 200 LBS | (0.89) KN | 150 LBS | (0.67) KN |
| 100612 | 6-1/8" | 1000 LBS | (4.45) KN | 200 LBS | (0.89) KN | 150 LBS | (0.67) KN |

NOMINAL PIPE

| PART NO. | I.P.S. | DESIGN LOAD 1 | | DESIGN LOAD 2 | | DESIGN LOAD 3 | |
|----------|--------|---------------|-----------|---------------|-----------|---------------|-----------|
| 200025 | 1/4" | 400 LBS | (1.78) KN | 50 LBS | (0.22) KN | 50 LBS | (0.22) KN |
| 200037 | 3/8" | 600 LBS | (2.67) KN | 75 LBS | (0.33) KN | 75 LBS | (0.33) KN |
| 200050 | 1/2" | 600 LBS | (2.67) KN | 75 LBS | (0.33) KN | 75 LBS | (0.33) KN |
| 200075 | 3/4" | 600 LBS | (2.67) KN | 75 LBS | (0.33) KN | 75 LBS | (0.33) KN |
| 200100 | 1" | 600 LBS | (2.67) KN | 75 LBS | (0.33) KN | 75 LBS | (0.33) KN |
| 200125 | 1-1/4" | 800 LBS | (3.56) KN | 125 LBS | (0.56) KN | 125 LBS | (0.56) KN |
| 200150 | 1-1/2" | 800 LBS | (3.56) KN | 125 LBS | (0.56) KN | 125 LBS | (0.56) KN |
| 200200 | 2" | 800 LBS | (3.56) KN | 125 LBS | (0.56) KN | 125 LBS | (0.56) KN |
| 200250 | 2-1/2" | 800 LBS | (3.56) KN | 125 LBS | (0.56) KN | 125 LBS | (0.56) KN |
| 200300 | 3" | 1000 LBS | (4.45) KN | 200 LBS | (0.89) KN | 150 LBS | (0.67) KN |
| 200350 | 3-1/2" | 1000 LBS | (4.45) KN | 200 LBS | (0.89) KN | 150 LBS | (0.67) KN |
| 200400 | 4" | 1000 LBS | (4.45) KN | 200 LBS | (0.89) KN | 150 LBS | (0.67) KN |
| 200500 | 5" | 1000 LBS | (4.45) KN | 200 LBS | (0.89) KN | 150 LBS | (0.67) KN |
| 200600 | 6" | 1000 LBS | (4.45) KN | 200 LBS | (0.89) KN | 150 LBS | (0.67) KN |
| 200800 | 8" | 1000 LBS | (4.45) KN | 200 LBS | (0.89) KN | 150 LBS | (0.67) KN |

Note: Full size range available upon request.

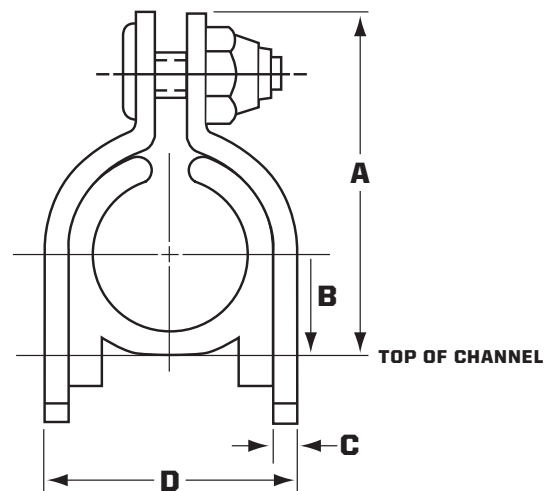
CUSHION CLAMPS FOR METRIC PIPE



Features:

- **Made in USA**
- **Classified 2043 (25/50) for use in plenums and air handling systems**
- Clamps are 1008-1010 carbon steel
- Eliminate shock and vibration
- Studs are projection welded
- Nylon insert locknut
- Resist most fuels, oils, gases, greases, solvents, mineral acids and other harsh materials
- Allow fluid conductors to be added or removed from installations without disturbing adjacent lines
- Assembled or disassembled with a single hand or power wrench or fast and simple installation
- Permit various size lines to be mixed to suit installation
- All metal components have a Tri-Valent (non-hex) plating
- Available in 304 and 316 stainless steel and aluminum
- Cushion material is a thermoplastic elastomer
- Temperature rating: -65°F to +275°F

| PART NO. | DESCRIPTION | A | B | C | D |
|----------|----------------------|------|------|------|------|
| 20MMHZ | 20mm Clamp Assembly | 1.78 | 0.53 | 0.07 | 1.33 |
| 25MMHZ | 25mm Clamp Assembly | 2.03 | 0.66 | 0.07 | 1.66 |
| 32MMHZ | 32mm Clamp Assembly | 2.30 | 0.78 | 0.07 | 1.92 |
| 40MMHZ | 40mm Clamp Assembly | 2.75 | 0.91 | 0.11 | 2.22 |
| 50MMHZ | 50mm Clamp Assembly | 3.28 | 1.16 | 0.11 | 2.72 |
| 63MMHZ | 63mm Clamp Assembly | 4.03 | 1.53 | 0.11 | 3.47 |
| 75MMHZ | 75mm Clamp Assembly | 4.52 | 1.78 | 0.11 | 3.97 |
| 90MMHZ | 90mm Clamp Assembly | 4.91 | 1.97 | 0.11 | 4.36 |
| 110MMHZ | 110mm Clamp Assembly | 5.76 | 2.44 | 0.11 | 5.30 |
| 125MMHZ | 125mm Clamp Assembly | 6.55 | 2.71 | 0.11 | 6.15 |
| 160MMHZ | 160mm Clamp Assembly | 7.95 | 3.41 | 0.11 | 7.70 |



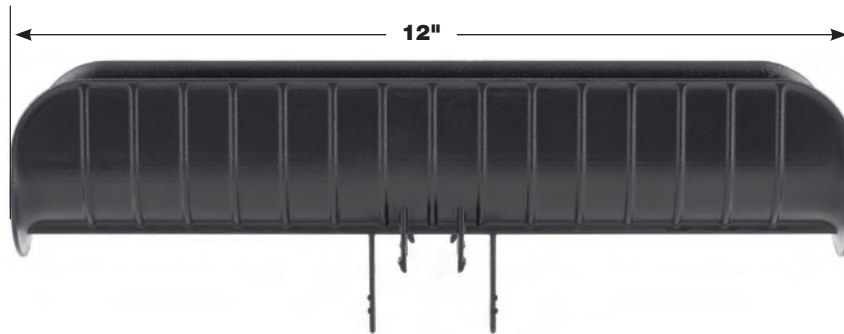
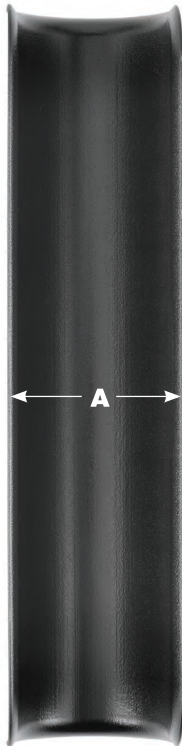
* Additional sizes available (see page 28).

BRONCO[®] SADDLE FOR INSULATED TUBE AND PIPE



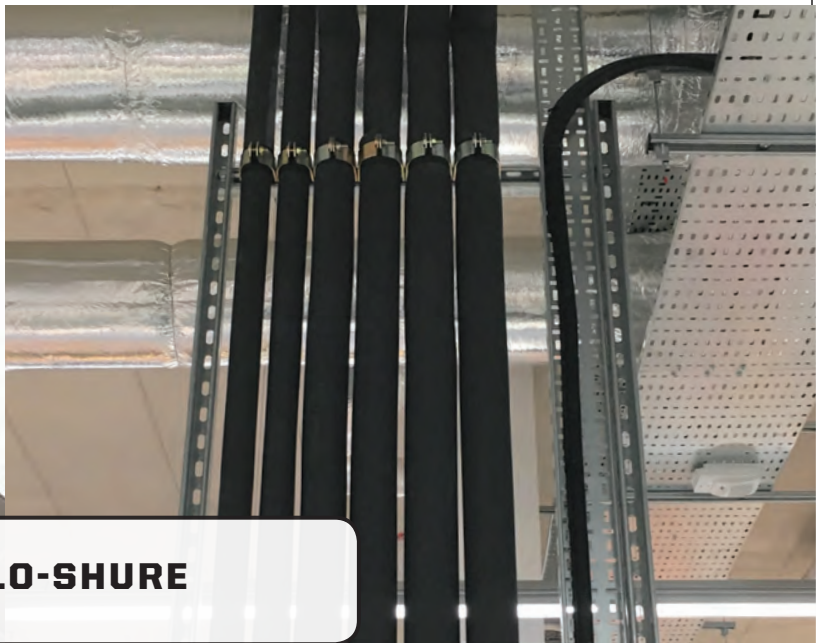
Features:

- Made in USA
- Classified 2043 (25/50) for use in plenums and air handling systems
- Available in black or white to match insulation
- Fits perfectly on anchor channel of any depth
- Plastic legs snap into channel
- External stability tabs with grooved slot feature for optional self-tapping screw (installer supplied)
- Single piece product—no assembly or tools required
- Enhanced safety lip prevents insulation crushing and tearing from pipe movement
- Molded with high-strength polypropylene copolymer
- UV resistant
- Temperature rating: -40°F to +178°F
- Available for 2-1/4" to 8-1/4" O.D.



| PART NO. (BLACK) | PART NO. (WHITE) | A |
|------------------|------------------|--------|
| HZSB225 | HZSW225 | 2-1/4" |
| HZSB325 | HZSW325 | 3-1/4" |
| HZSB425 | HZSW425 | 4-1/4" |
| HZSB525 | HZSW525 | 5-1/4" |
| HZSB625 | HZSW625 | 6-1/4" |
| HZSB825 | HZSW825 | 8-1/4" |





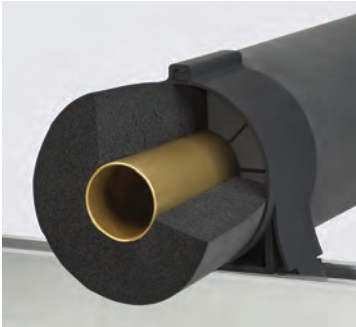
WITH KLO-SHURE



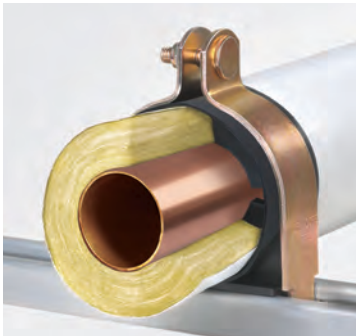
WITHOUT KLO-SHURE



7-Series Strut Mount



8-Series Strut Mount



9-Series Strut Mount



Clevis System



Patented Klo-Shure® Insulation Couplings allow sections of closed-cell, elastomeric or fiberglass insulation to be secured, eliminating most secondary operations at suspension points. It can also be used to simply join and secure two lengths of insulation.



KLO-SHURE INSULATION COUPLINGS

Classified 2043 (25/50) for use in plenums and air handling systems.
Available for copper tube, iron pipe and metric sizes.
Easy to install.

7-Series Strut Mount



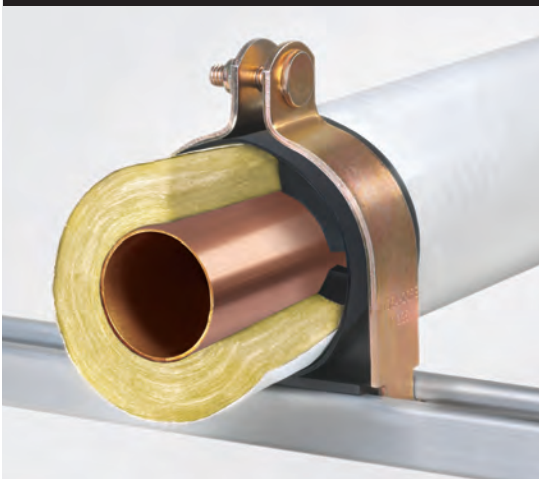
Supports & secures tubing in strut mounted applications. For elastomeric insulation.

8-SERIES STRUT MOUNT



Install in seconds without metal clamps.

9-SERIES STRUT MOUNT

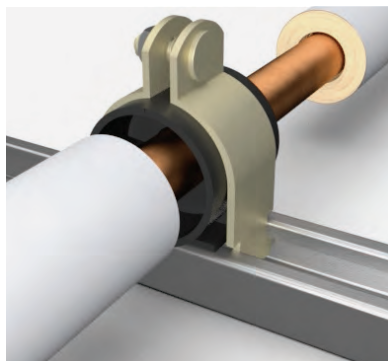
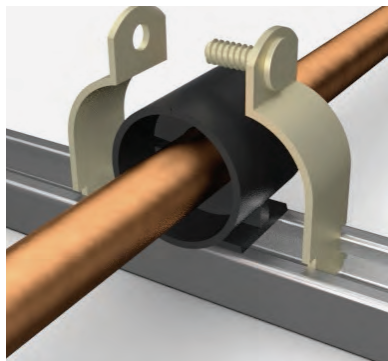
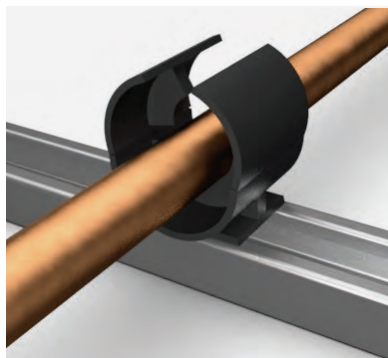
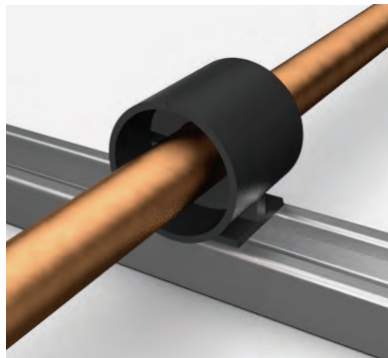


For fiberglass insulation, available in copper tube, iron pipe and mm sizing.

CLEVIS SYSTEM



Coupling locks into clevis hanger.



Features:

- **Made in USA**
- **Classified 2043 (25/50) for use in plenums and air handling systems**
- Manufactured from high strength TPO plastic
- Superior vapor barrier
- Three times faster installation of closed-cell elastomeric and fiberglass insulation
- Dramatically improved finished appearance of insulated tubing
- Eliminates insulation compression at suspension points
- For use with strut mounted clamps and clevis hangers
- Supports OD tube from 1/4" to 4-1/8" and 1/2" to 3" nominal pipe
- Metric sizes available from 25mm – 110mm
- Available with 304 or 316 stainless steel hardware

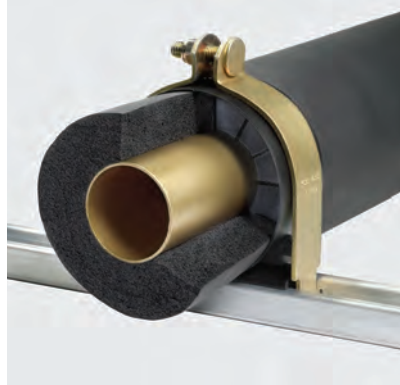
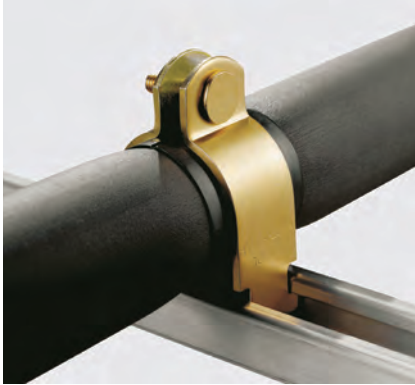
Specification Data & Guidelines:

- All insulated copper tube and iron pipe lines are to be secured using resilient Klo-Shure Insulation Couplings and Hydra-Zorb anchor channel
- Tubing supported and secured by internal part design
- Insulation to be inserted inside coupling with insulation contacting internal wall
- Secondary operations (glue + tape) can be performed at installer's discretion
- Entire assembly can be assembled or disassembled with a single hand or power wrench
- Coupling spacing should be no more than 60 diameters.
- Keep conductor runs as straight as possible.
- Overwrap of Klo-Shure coupling with insulation is not required
- 7-Series and 9-Series acceptable for horizontal and vertical installations
- 8-Series acceptable for horizontal installations

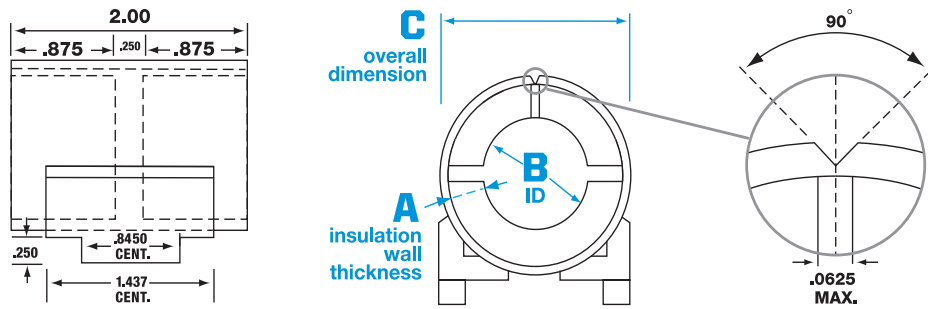
7-SERIES STRUT MOUNT INSULATION COUPLINGS

For use with elastomeric insulation.

Klo-Shure strut mounted parts include the Klo-Shure Coupling, clamp halves with welded fastener and locknut.



| A | B | C | PART NO. | QUANTITY PER BOX |
|---|-----------|------|---------------|------------------|
| Klo-Shure® Strut Mounted Coupling for 3/8" wall insulation | 1/4" OD | 1.12 | 723025 | 40 |
| | 3/8" OD | 1.25 | 723037 | 25 |
| | 1/2" OD | 1.37 | 723050 | 20 |
| | 5/8" OD | 1.50 | 723062 | 20 |
| | 3/4" OD | 1.62 | 723075 | 20 |
| | 7/8" OD | 1.75 | 723087 | 20 |
| | 1" OD | 1.87 | 723100 | 20 |
| | 1-1/8" OD | 2.00 | 723112 | 20 |
| | 1-3/8" OD | 2.25 | 723137 | 20 |
| | 1-5/8" OD | 2.50 | 723162 | 10 |
| | 2-1/8" OD | 3.00 | 723212 | 10 |
| Klo-Shure® Strut Mounted Coupling for 1/2" wall insulation | 1/4" OD | 1.37 | 724025 | 25 |
| | 3/8" OD | 1.50 | 724037 | 25 |
| | 1/2" OD | 1.62 | 724050 | 20 |
| | 5/8" OD | 1.75 | 724062 | 20 |
| | 3/4" OD | 1.87 | 724075 | 20 |
| | 7/8" OD | 2.00 | 724087 | 20 |
| | 1" OD | 2.12 | 724100 | 20 |
| | 1-1/8" OD | 2.25 | 724112 | 20 |
| | 1-3/8" OD | 2.50 | 724137 | 20 |
| | 1-5/8" OD | 2.75 | 724162 | 10 |
| | 2-1/8" OD | 3.25 | 724212 | 10 |
| | 2-5/8" OD | 3.75 | 724262 | 10 |
| | 3-1/8" OD | 4.25 | 724312 | 10 |
| | 3-5/8" OD | 4.75 | 724362 | 10 |
| | 4-1/8" OD | 5.25 | 724412 | 10 |



| A | B | C | PART NO. | QUANTITY PER BOX |
|---|-----------|---------------|---------------|------------------|
| Klo-Shure® Strut Mounted Coupling for 3/4" wall insulation | 1/4" OD | 1.87 | 726025 | 20 |
| | 3/8" OD | 2.00 | 726037 | 20 |
| | 1/2" OD | 2.12 | 726050 | 10 |
| | 5/8" OD | 2.25 | 726062 | 10 |
| | 3/4" OD | 2.37 | 726075 | 10 |
| | 7/8" OD | 2.50 | 726087 | 10 |
| | 1-1/8" OD | 2.75 | 726112 | 10 |
| | 1-3/8" OD | 3.00 | 726137 | 10 |
| | 1-5/8" OD | 3.25 | 726162 | 10 |
| | 2-1/8" OD | 3.75 | 726212 | 10 |
| | 2-5/8" OD | 4.25 | 726262 | 10 |
| | 3-1/8" OD | 4.75 | 726312 | 10 |
| | 3-5/8" OD | 5.25 | 726362 | 10 |
| 4-1/8" OD | 5.75 | 726412 | 10 | |
| Klo-Shure® Strut Mounted Coupling for 1" wall insulation | 1/4" OD | 2.37 | 728025 | 10 |
| | 5/16" OD | 2.43 | 728031 | 10 |
| | 3/8" OD | 2.50 | 728037 | 10 |
| | 1/2" OD | 2.62 | 728050 | 10 |
| | 5/8" OD | 2.75 | 728062 | 10 |
| | 3/4" OD | 2.87 | 728075 | 10 |
| | 7/8" OD | 3.00 | 728087 | 10 |
| | 1-1/8" OD | 3.25 | 728112 | 10 |
| | 1-3/8" OD | 3.50 | 728137 | 10 |
| | 1-5/8" OD | 3.75 | 728162 | 10 |
| | 2-1/8" OD | 4.25 | 728212 | 10 |
| | 2-5/8" OD | 4.75 | 728262 | 10 |
| | 3-1/8" OD | 5.25 | 728312 | 10 |
| 3-5/8" OD | 5.75 | 728362 | 10 | |
| 4-1/8" OD | 6.25 | 728412 | 5 | |
| Klo-Shure® Strut Mounted Coupling for 1-1/2" wall insulation | 5/16" OD | 3.43 | 729031 | 10 |
| | 3/8" OD | 3.50 | 729037 | 10 |
| | 1/2" OD | 3.62 | 729050 | 10 |
| | 5/8" OD | 3.75 | 729062 | 10 |
| | 7/8" OD | 4.00 | 729087 | 10 |
| | 1-1/8" OD | 4.25 | 729112 | 10 |
| | 1-3/8" OD | 4.50 | 729137 | 10 |
| | 1-5/8" OD | 4.75 | 729162 | 10 |
| | 2-1/8" OD | 5.25 | 729212 | 10 |
| | 2-5/8" OD | 5.75 | 729262 | 10 |
| | 3-1/8" OD | 6.25 | 729312 | 5 |
| | 4-1/8" OD | 7.25 | 729412 | 5 |

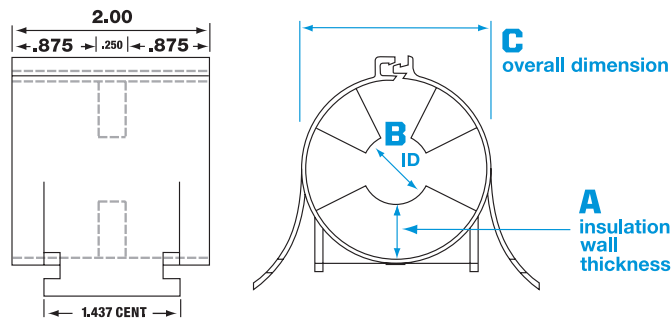
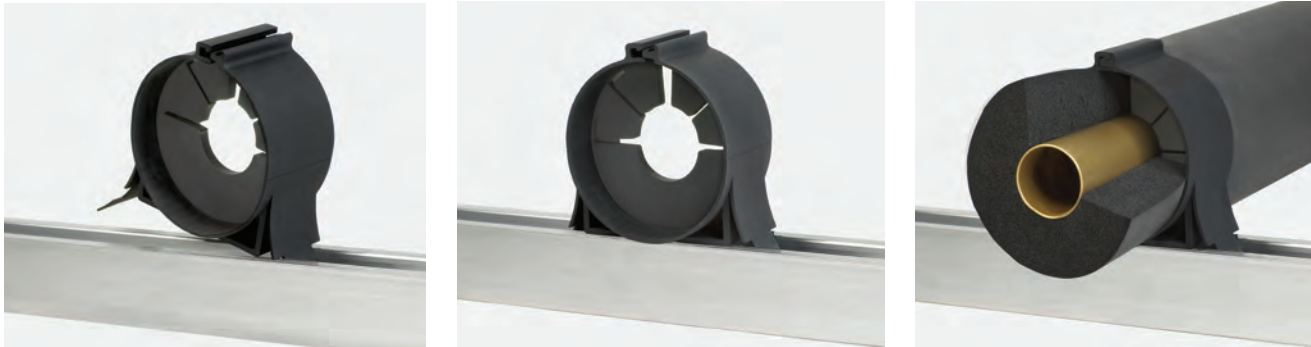
*Note: All metal parts have Tri-Valent plating. Please contact factory for 304 and 316 stainless steel hardware part numbers & pricing.



8-SERIES STRUT MOUNT INSULATION COUPLINGS

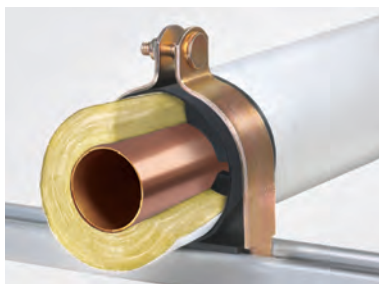
For use with elastomeric insulation.

Klo-Shure 8-Series couplings allow the installer to insert coupling into the channel and lock the top. No metal clamps needed.



| A | B | C | PART NO. |
|---|-----------|------|----------|
| Klo-Shure® Coupling for 1/2" wall insulation | 1/2" OD | 1.62 | 824050 |
| | 5/8" OD | 1.75 | 824062 |
| | 7/8" OD | 2.00 | 824087 |
| | 1-1/8" OD | 2.25 | 824112 |
| | 1-3/8" OD | 2.50 | 824137 |
| | 1-5/8" OD | 2.75 | 824162 |
| | 2-1/8" OD | 3.25 | 824212 |
| Klo-Shure® Coupling for 3/4" wall insulation | 1/4" OD | 1.87 | 826025 |
| | 3/8" OD | 2.00 | 826037 |
| | 1/2" OD | 2.12 | 826050 |
| | 5/8" OD | 2.25 | 826062 |
| | 7/8" OD | 2.50 | 826087 |
| | 1-1/8" OD | 2.75 | 826112 |
| | 1-3/8" OD | 3.00 | 826137 |
| Klo-Shure® Coupling for 1" wall insulation | 7/8" OD | 3.00 | 828087 |
| | 1-1/8" OD | 3.25 | 828112 |
| | 1-3/8" OD | 3.50 | 828137 |
| | 1-5/8" OD | 3.75 | 828162 |
| | 2-1/8" OD | 4.25 | 828212 |
| | 2-5/8" OD | 4.75 | 828262 |





9-SERIES STRUT MOUNT INSULATION COUPLINGS

For use with fiberglass insulation.

For copper tube and nominal pipe sizes. Includes Klo-Shure Coupling, clamp halves with welded fastener and locknut.

| COPPER TUBE | A | B | C | PART NO. | QUANTITY PER BOX |
|---|-----------------------|-------|---------------|---------------|------------------|
| Klo-Shure® Strut Mounted Coupling copper tube sizes for 1/2" wall fiberglass insulation | 5/8" OD | 1.785 | 1.785 | 924062 | 20 |
| | 7/8" OD | 2.025 | 2.025 | 924087 | 20 |
| | 1-1/8" OD | 2.285 | 2.285 | 924112 | 20 |
| | 1-3/8" OD | 2.500 | 2.500 | 924137 | 10 |
| | 1-5/8" OD | 2.845 | 2.845 | 924162 | 10 |
| | 2-1/8" OD | 3.285 | 3.285 | 924212 | 10 |
| Klo-Shure® Strut Mounted Coupling copper tube sizes for 1" wall fiberglass insulation | 5/8" OD | 3.008 | 3.008 | 928062 | 10 |
| | 7/8" OD | 3.008 | 3.008 | 928087 | 10 |
| | 1-1/8" OD | 3.008 | 3.008 | 928112 | 10 |
| | 1-3/8" OD | 3.638 | 3.638 | 928137 | 10 |
| | 1-5/8" OD | 3.638 | 3.638 | 928162 | 10 |
| | 2-1/8" OD | 4.138 | 4.138 | 928212 | 10 |
| | 2-5/8" OD | 4.648 | 4.648 | 928262 | 10 |
| | 3-1/8" OD | 5.138 | 5.138 | 928312 | 10 |
| | 3-5/8" OD | 5.690 | 5.690 | 928362 | 5 |
| Klo-Shure® Strut Mounted Coupling copper tube sizes for 1-1/2" wall fiberglass insulation | 4-1/8" OD | 6.870 | 6.870 | 928412 | 5 |
| | 5-1/8" OD | 7.870 | 7.870 | 928512 | 5 |
| | 7/8" OD | 4.138 | 4.138 | 929087 | 10 |
| | 1-1/8" OD | 4.138 | 4.138 | 929112 | 10 |
| | 1-3/8" OD | 4.648 | 4.648 | 929137 | 10 |
| | 1-5/8" OD | 5.138 | 5.138 | 929162 | 10 |
| | 2-1/8" OD | 5.138 | 5.138 | 929212 | 10 |
| | 2-5/8" OD | 5.690 | 5.690 | 929262 | 5 |
| Klo-Shure® Strut Mounted Coupling copper pipe sizes for 2" wall fiberglass insulation | 3-1/8" OD | 6.870 | 6.870 | 929312 | 5 |
| | 3-5/8" OD | 6.870 | 6.870 | 929362 | 5 |
| | 4-1/8" OD | 7.870 | 7.870 | 929412 | 5 |
| | 5/8" OD | 4.648 | 4.648 | 922062 | 10 |
| | 7/8" OD | 5.138 | 5.138 | 922087 | 10 |
| | 1-1/8" OD | 5.138 | 5.138 | 922112 | 10 |
| | 1-3/8" OD | 5.698 | 5.698 | 922137 | 10 |
| | 1-5/8" OD | 5.698 | 5.698 | 922162 | 5 |
| | 2-1/8" OD | 6.870 | 6.870 | 922212 | 5 |
| | 2-5/8" OD | 6.870 | 6.870 | 922262 | 5 |
| IRON PIPE | 3-1/8" OD | 7.870 | 7.870 | 922312 | 5 |
| | 3-5/8" OD | 7.870 | 7.870 | 922362 | 5 |
| | 1/2" pipe (0.84 OD) | 2.025 | 2.025 | 924084 | 20 |
| | 3/4" pipe (1.05 OD) | 2.285 | 2.285 | 924105 | 20 |
| | 1" pipe (1.31 OD) | 2.500 | 2.500 | 924131 | 10 |
| | 1-1/4" pipe (1.66 OD) | 2.845 | 2.845 | 924166 | 10 |
| | 1-1/2" pipe (1.90 OD) | 3.285 | 3.285 | 924190 | 10 |
| | 1/2" pipe (0.84 OD) | 3.008 | 3.008 | 928084 | 10 |
| | 3/4" pipe (1.05 OD) | 3.008 | 3.008 | 928105 | 10 |
| | 1" pipe (1.31 OD) | 3.638 | 3.638 | 928131 | 10 |
| | 1-1/4" pipe (1.66 OD) | 3.638 | 3.638 | 928166 | 10 |
| | 1-1/2" pipe (1.90 OD) | 3.950 | 3.950 | 928190 | 10 |
| | 2" pipe (2.37 OD) | 4.648 | 4.648 | 928237 | 10 |
| | 2-1/2" pipe (2.87 OD) | 5.138 | 5.138 | 928287 | 10 |
| 3" pipe (3.50 OD) | 5.750 | 5.750 | 928350 | 5 | |
| Klo-Shure® Strut Mounted Coupling iron pipe sizes for 1-1/2" wall fiberglass insulation | 1/2" pipe (0.84 OD) | 4.138 | 4.138 | 929084 | 10 |
| | 3/4" pipe (1.05 OD) | 4.138 | 4.138 | 929105 | 10 |
| | 1" pipe (1.31 OD) | 4.648 | 4.648 | 929131 | 10 |
| | 1-1/4" pipe (1.66 OD) | 5.138 | 5.138 | 929166 | 10 |
| | 1-1/2" pipe (1.90 OD) | 5.138 | 5.138 | 929190 | 10 |

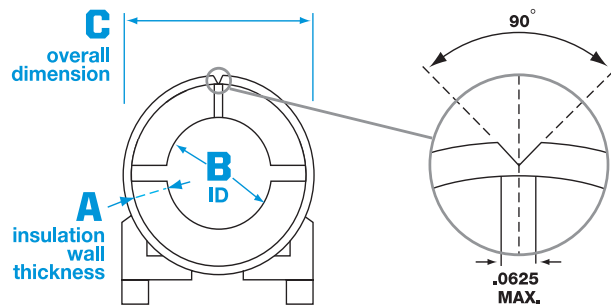
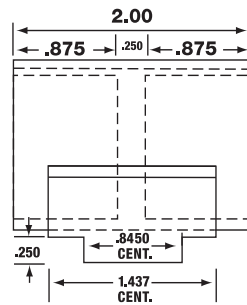
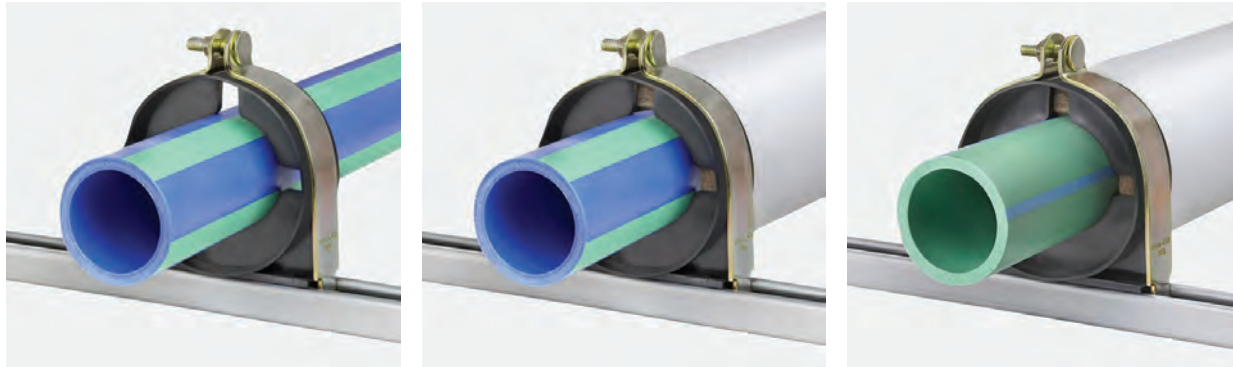
*Note: All metal parts have Tri-Valent plating. Please contact factory for 304 and 316 stainless steel hardware part numbers & pricing.



9-SERIES STRUT MOUNT INSULATION COUPLINGS

For use with metric pipe.

Includes Klo-Shure Coupling, clamp halves with welded fastener and locknut.



| A | B | C | PART NO. | QUANTITY PER BOX |
|--|--------|------|----------------|------------------|
| Klo-Shure® Strut Mounted Coupling for 1" wall insulation | 25 mm | 3.01 | 928M25 | 10 |
| | 32 mm | 3.64 | 928M32 | 10 |
| | 40 mm | 3.64 | 928M40 | 10 |
| | 50 mm | 4.14 | 928M50 | 10 |
| | 63 mm | 4.64 | 928M63 | 10 |
| | 75 mm | 5.14 | 928M75 | 10 |
| | 90 mm | 5.75 | 928M90 | 10 |
| | 110 mm | 6.87 | 928M110 | 5 |
| Klo-Shure® Strut Mounted Coupling for 1-1/2" wall insulation | 25 mm | 4.13 | 929M25 | 10 |
| | 32 mm | 4.63 | 929M32 | 10 |
| | 40 mm | 5.14 | 929M40 | 10 |
| | 50 mm | 5.14 | 929M50 | 10 |
| | 63 mm | 5.69 | 929M63 | 10 |
| | 75 mm | 6.87 | 929M75 | 5 |
| | 90 mm | 6.87 | 929M90 | 5 |

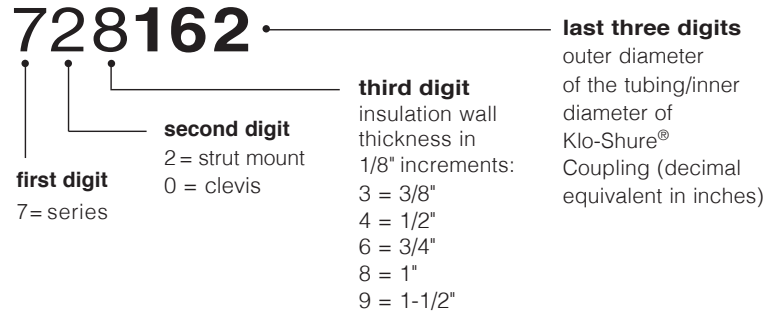


PART NUMBER SYSTEM FOR INSULATION COUPLINGS

7-SERIES STRUT MOUNT / PART NO. EXAMPLE:

All Klo-Shure® couplings consist of a 6-digit part number. This shows the breakdown of typical **7-SERIES** part numbers.

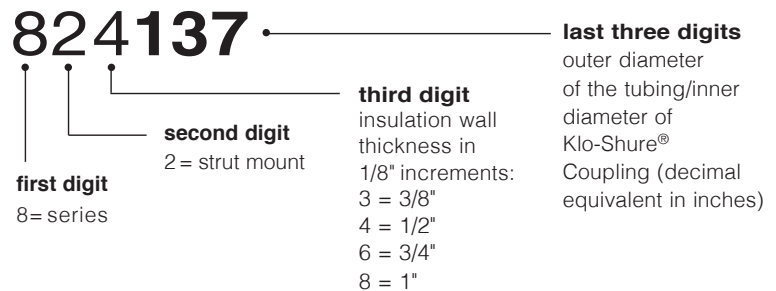
i.e. Strut mounted coupling for **1-5/8"** tube with **1"** wall insulation.



8-SERIES STRUT MOUNT / PART NO. EXAMPLE:

All Klo-Shure® couplings consist of a 6-digit part number. This shows the breakdown of typical **8-SERIES** part numbers.

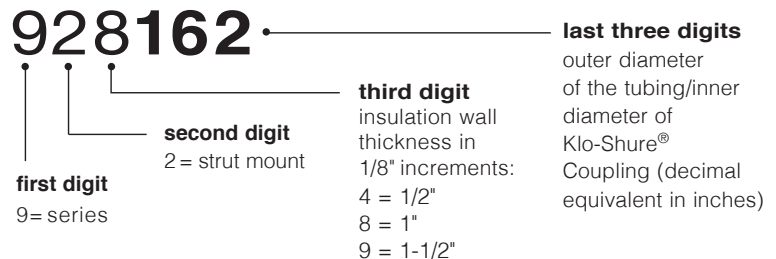
i.e. Strut mounted coupling for **1-3/8"** tube with **1/2"** wall insulation.



9-SERIES STRUT MOUNT / PART NO. EXAMPLE:

All Klo-Shure® couplings consist of a 6-digit part number. This shows the breakdown of typical **9-SERIES** part numbers.

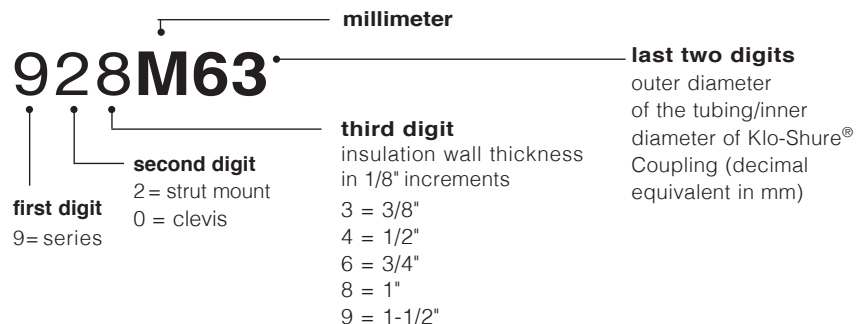
i.e. Strut mounted coupling for **1-5/8"** tube with **1"** wall insulation



9-SERIES STRUT MOUNT FOR METRIC PIPE / PART NO. EXAMPLE:

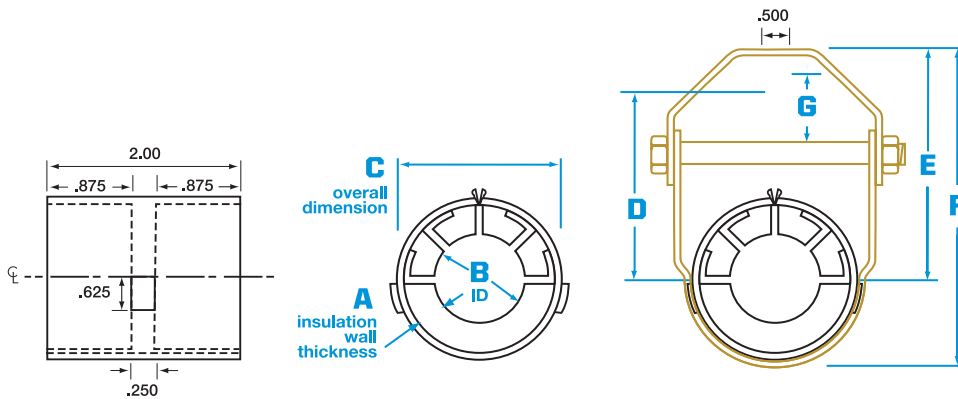
All Klo-Shure® couplings consist of a 6-digit part number. This shows the breakdown of typical **9-SERIES FOR METRIC PIPE** part numbers.

i.e. Strut mounted coupling for **63mm** pipe with **1"** wall insulation



CLEVIS HANGER INSULATION COUPLINGS

Klo-Shure Clevis Hanger System includes clevis hanger, plastic coupling and fastening clip.



| coupling "C" dimension | material size | cross bolt size | max recommended load/lbs |
|------------------------|---------------|-----------------|--------------------------|
| 2.12 to 3.25 | 14 ga. x 1.25 | 5/16" | 250 |
| 3.50 to 5.75 | 12 ga. x 1.25 | 5/16" | 350 |

| A | B | C | D | E | F | G | PART NO. |
|---|-----------|------|--------|---------|-------|--------|----------|
| Klo-Shure® Clevis Hanger Coupling for 3/8" wall insulation | 1/4" OD | 1.12 | - | - | - | - | 703025* |
| | 3/8" OD | 1.25 | - | - | - | - | 703037* |
| | 1/2" OD | 1.37 | - | - | - | - | 703050* |
| | 5/8" OD | 1.50 | - | - | - | - | 703062* |
| | 3/4" OD | 1.62 | - | - | - | - | 703075* |
| | 7/8" OD | 1.75 | 2-1/2 | 3-3/8 | 4-3/8 | 7/16 | 703087 |
| | 1" OD | 1.87 | 2-5/8 | 3-7/16 | 4-1/2 | 1/2 | 703100 |
| | 1-1/8" OD | 2.00 | 2-7/8 | 3-1/2 | 4-5/8 | 5/8 | 703112 |
| | 1-3/8" OD | 2.25 | 3-3/16 | 3-13/16 | 5 | 15/16 | 703137 |
| | 1-5/8" OD | 2.50 | 3-1/2 | 4 | 5-1/2 | 1-1/16 | 703162 |
| | 2-1/8" OD | 3.00 | 4-3/16 | 4-3/4 | 6-1/2 | 1-5/16 | 703212 |



| A | B | C | D | E | F | G | PART NO. |
|--|-----------|------|---------|---------|--------|---------|----------------|
| Klo-Shure® Clevis Hanger Coupling for 1/2" wall insulation | 3/8" OD | 1.50 | - | - | - | - | 704037* |
| | 1/2" OD | 1.62 | - | - | - | - | 704050* |
| | 5/8" OD | 1.75 | 2-1/2 | 3-3/8 | 4-3/8 | 7/16 | 704062 |
| | 3/4" OD | 1.87 | 2-5/8 | 3-7/16 | 4-1/2 | 1/2 | 704075 |
| | 7/8" OD | 2.00 | 2-7/8 | 3-1/2 | 4-5/8 | 5/8 | 704087 |
| | 1" OD | 2.12 | 3 | 3-5/8 | 4-7/8 | 7/8 | 704100 |
| | 1-1/8" OD | 2.25 | 3-3/16 | 3-13/16 | 5 | 15/16 | 704112 |
| | 1-3/8" OD | 2.50 | 3-1/2 | 4 | 5-1/2 | 1-1/16 | 704137 |
| | 1-5/8" OD | 2.75 | 3-3/4 | 4-3/8 | 5-7/8 | 1-1/4 | 704162 |
| | 2-1/8" OD | 3.25 | 4-1/2 | 5-1/8 | 6-7/8 | 1-7/16 | 704212 |
| | 2-5/8" OD | 3.75 | 5 | 5-5/8 | 7-5/8 | 1-11/16 | 704262 |
| | 3-1/8" OD | 4.25 | 5-13/16 | 6-7/16 | 8-3/4 | 2-1/8 | 704312 |
| | 3-5/8" OD | 4.75 | 6-5/16 | 6-7/8 | 9-3/8 | 2-15/16 | 704362 |
| | 4-1/8" OD | 5.25 | 6-7/8 | 7-1/2 | 10-1/8 | 2-9/16 | 704412 |
| Klo-Shure® Clevis Hanger Coupling for 3/4" wall insulation | 1/4" OD | 1.87 | 2-5/8 | 3-7/16 | 4-1/2 | 1/2 | 706025 |
| | 3/8" OD | 2.00 | 2-7/8 | 3-1/2 | 4-5/8 | 5/8 | 706037 |
| | 1/2" OD | 2.12 | 3 | 3-5/8 | 4-7/8 | 7/8 | 706050 |
| | 5/8" OD | 2.25 | 3-3/16 | 3-13/16 | 5 | 15/16 | 706062 |
| | 3/4" OD | 2.37 | 3-5/16 | 3-15/16 | 5-1/4 | 1 | 706075 |
| | 7/8" OD | 2.50 | 3-1/2 | 4 | 5-1/2 | 1-1/16 | 706087 |
| | 1-1/8" OD | 2.75 | 3-3/4 | 4-3/8 | 5-7/8 | 1-1/4 | 706112 |
| | 1-3/8" OD | 3.00 | 4-3/16 | 4-3/4 | 6-1/2 | 1-5/16 | 706137 |
| | 1-5/8" OD | 3.25 | 4-1/2 | 5-1/8 | 6-7/8 | 1-7/16 | 706162 |
| | 2-1/8" OD | 3.75 | 5 | 5-5/8 | 7-5/8 | 1-11/16 | 706212 |
| | 2-5/8" OD | 4.25 | 5-13/16 | 6-7/16 | 8-3/4 | 2-1/8 | 706262 |
| | 3-1/8" OD | 4.75 | 6-5/16 | 6-7/8 | 9-3/8 | 2-5/16 | 706312 |
| | 3-5/8" OD | 5.25 | 6-7/8 | 7-1/2 | 10-1/8 | 2-9/16 | 706362 |
| | 4-1/8" OD | 5.75 | 7-1/4 | 7-7/8 | 10-3/4 | 2-3/4 | 706412 |
| Klo-Shure® Clevis Hanger Coupling for 1" wall insulation | 5/8" OD | 2.75 | 3-3/4 | 4-3/8 | 5-7/8 | 1-1/4 | 708062 |
| | 7/8" OD | 3.00 | 4-3/16 | 4-3/4 | 6-1/2 | 1-5/16 | 708087 |
| | 1-1/8" OD | 3.25 | 4-1/2 | 5-1/8 | 6-7/8 | 1-7/16 | 708112 |
| | 1-3/8" OD | 3.50 | 4-3/4 | 5-3/8 | 7-1/4 | 1-9/16 | 708137 |
| | 1-5/8" OD | 3.75 | 5 | 5-5/8 | 7-5/8 | 1-11/16 | 708162 |
| | 2-1/8" OD | 4.25 | 5-13/16 | 6-7/16 | 8-3/4 | 2-1/8 | 708212 |
| | 2-5/8" OD | 4.75 | 6-5/16 | 6-7/8 | 9-3/8 | 2-5/16 | 708262 |
| | 3-1/8" OD | 5.25 | 6-7/8 | 7-1/2 | 10-1/8 | 2-9/16 | 708312 |
| | 3-5/8" OD | 5.75 | 7-1/4 | 7-7/8 | 10-3/4 | 2-3/4 | 708362 |

Note: *Part number includes plastic coupling only. All metal parts have Tri-Valent plating.

TITAN® INSULATION RISER CLAMP SERIES



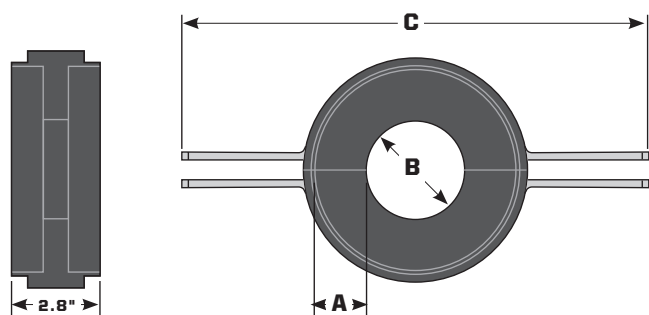
The patented Titan riser is made to fit insulated pipe and create a clean vapor barrier on vertical pipe runs. Klo-Shure Titan riser will dramatically improve the fit and finish of insulated tube and pipe runs.



Features:

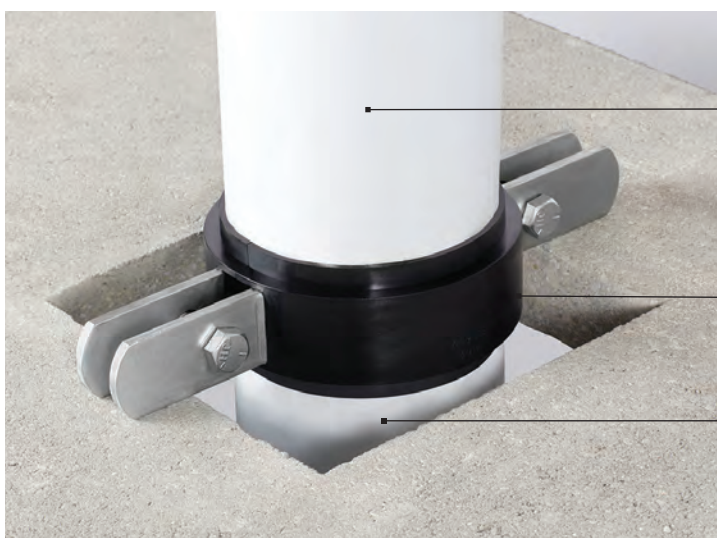
- **Made in USA**
- Superior vapor barrier
- Three times faster installation of insulation
- Crush resistant design
- Dramatically improved finished appearance of insulated tube and pipe runs
- Eliminates insulation compression
- Available for 7/8" to 4-1/8" OD tube
- Insulation wall thickness from 1" to 1-1/2"
- Molded with high strength TPO plastic





| A | B | C | PART NO. | LOAD DATA* |
|------------------------|-----------|--------|----------------|------------|
| 1" wall insulation | 7/8" OD | 10.125 | R087100 | 45 lb |
| | 1-1/8" OD | 10.875 | R112100 | 105 lb |
| | 1-3/8" OD | 11.500 | R137100 | 105 lb |
| | 1-5/8" OD | 11.500 | R162100 | 105 lb |
| | 2-1/8" OD | 11.500 | R212100 | 190 lb |
| | 2-5/8" OD | 12.500 | R262100 | 180 lb |
| | 3-1/8" OD | 12.500 | R312100 | 230 lb |
| | 4-1/8" OD | 13.800 | R412100 | 320 lb |
| 1-1/2" wall insulation | 7/8" OD | 10.875 | R087150 | 50 lb |
| | 1-1/8" OD | 10.875 | R112150 | 90 lb |
| | 1-3/8" OD | 11.500 | R137150 | 90 lb |
| | 1-5/8" OD | 11.500 | R162150 | 100 lb |
| | 2-1/8" OD | 12.000 | R212150 | 150 lb |
| | 2-5/8" OD | 12.000 | R262150 | 220 lb |
| | 3-1/8" OD | 13.000 | R312150 | 200 lb |
| | 4-1/8" OD | 15.625 | R412150 | 300 lb |

* Load data based on 200 inch/lb torque.



Upper floor insulation from above.

Riser clamp assembly secures and supports the weight of pipe or tubing.

Pipe or tubing and insulation come up through floor.

MAX PROTECT MINI-SPLIT GUARDS

Our "Max Protect" line of guards are a safe solution to vandalism and accidental damage of mini-split units. The steel mesh guards, made from galvanized steel with an epoxy powder coating, have a unique sliding panel design that can be easily removed for any maintenance on the unit. Created with the installer in mind, these units can be assembled in minutes.

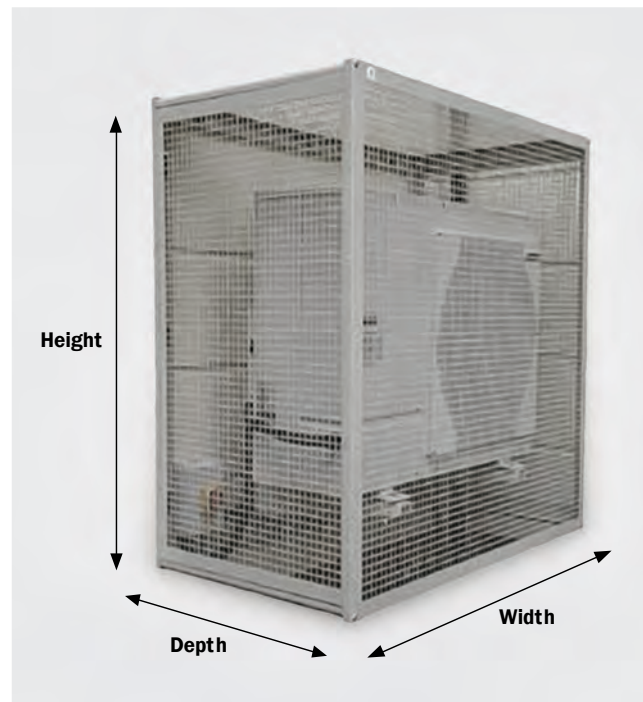


Features:

- Unique sliding panel system
- All panels can be removed
- Flat packed with all components
- 12 month warranty
- Salt spray tested to replicate 10 years in use
- All cages are pre-galvanized steel with a polyester powder coating
- Tamper proof bolts included

Package Includes:

Wall Frame (1), Front Panel (1), Top Panel (1), Side Panel (2), Support Arms (4), Bolts, Spring Washers, Anchor Bolts and Allen Key



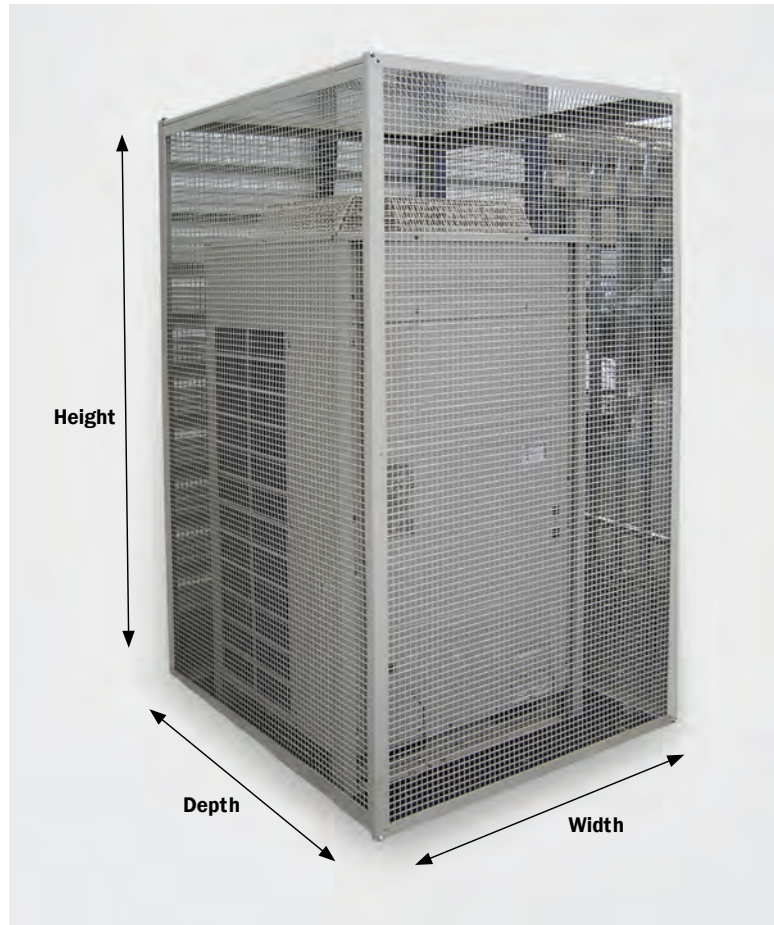
| PART NO. | SIZE | DIMENSIONS (EXTERNAL) | | | DIMENSIONS (INTERNAL) | | | WEIGHT | EXTRA BASE PANEL | EXTRA FRONT PANEL |
|----------|------|-----------------------|--------|-------|-----------------------|-------|-------|--------|------------------|-------------------|
| | | HEIGHT | WIDTH | DEPTH | HEIGHT | WIDTH | DEPTH | | | |
| MP-CG-S | S | 2' 6" | 3' 6" | 1' 6" | 2' 4" | 3' 4" | 1' 5" | 40 lbs | MP-BPS | MP-FPS |
| MP-CG-M | M | 3' 10" | 3' 10" | 2' 2" | 3' 8" | 3' 8" | 2' 1" | 60 lbs | MP-BPM | MP-FPM |
| MP-CG-L | L | 4' 9" | 3' 10" | 2' 2" | 4' 7" | 3' 8" | 2' 1" | 66 lbs | MP-BPL | MP-FPL |
| MP-CG-XL | XL | 5' 11" | 3' 10" | 2' 2" | 5' 9" | 3' 8" | 2' 1" | 88 lbs | MP-BPXL | MP-FPXL |

GALVANIZED STEEL / POWDER COATED VRF / VRV PROTECTIVE GUARDS

The first flat packed, self assembly guard for protection of outdoor VRF / VRV units. These guards protect the unit against vandalism and accidental damage. The base pack suits single VRF / VRV units; any number of extender packs can then be added to the base pack for multiple-unit installations. All sliding panels can be easily removed to maintain the unit.

Features:

- Unique sliding panel system
- All panels can be removed
- Flat packed with all components
- 12 month warranty
- Salt spray tested to replicate 10 years in use
- All cages are pre-galvanized steel with a polyester powder coating
- Avoids high cost fencing and fabrication on site
- Suitable for all models/brands of VRV/VRF units
- Floor-mounting
- Reversible floor fixings can be located inside or outside the guard



Package Includes:

Front Panel (1), Top Panel (1),
Back Panel (1), Side Panels (2),
Support Arms (4), Mounting Feet (4),
Bolts, Spring Washers,
Anchor Bolts and Allen Key

| PART NO. | SIZE | DIMENSIONS (EXTERNAL) | | | DIMENSIONS (INTERNAL) | | | WEIGHT |
|---------------------|-----------------------|-----------------------|--------|--------|-----------------------|-------|--------|---------|
| | | HEIGHT | WIDTH | DEPTH | HEIGHT | WIDTH | DEPTH | |
| MP-VRF-BP | Base Pack | 6' 6" | 3' 9" | 3' 11" | 6' 5" | 3' 8" | 3' 11" | 141 lbs |
| MP-VRF-EP-6 | Extender Pack - Small | 6' 6" | 1' 10" | 3' 11" | 6' 5" | - | 3' 11" | 53 lbs |
| MP-VRF-EP-12 | Extender Pack - Large | 6' 6" | 3' 9" | 3' 11" | 6' 5" | - | 3' 11" | 90 lbs |

MINI-SPLIT MOUNTING BRACKETS

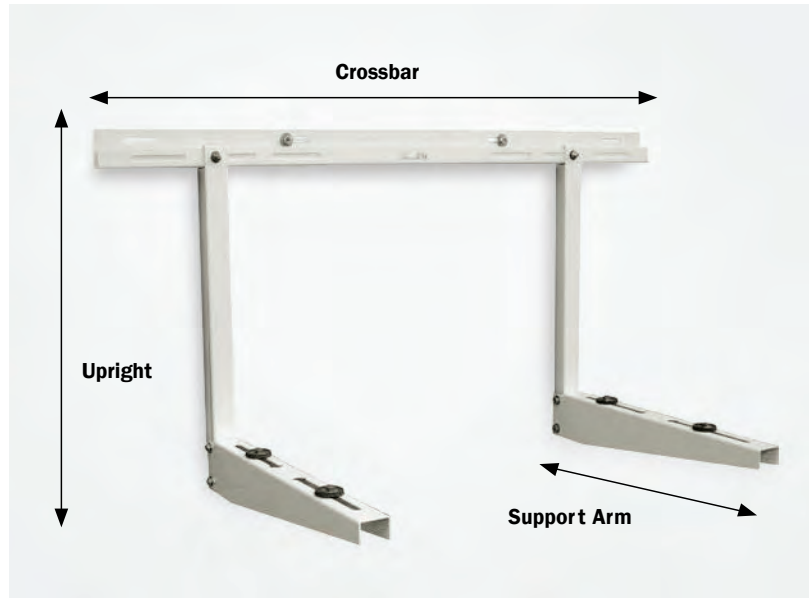
These flat packed self assembly brackets are available with or without a crossbar and can support outdoor ductless split systems up to 310 lbs. Quick and easy to install with a sight level. All types come with wall spacers to level the arms for a secure fit.

Features:

- Quick assembly saves cost and time
- Integral sight level on crossbar models
- Flat packed with all components
- Quality tested with safe working load up to 310 lbs
- 12 month warranty
- Pre-galvanized steel with a polyester powder coating

Package Includes:

Crossbar (Type 2 & 3 Models), Support Arms (2), Uprights (2), 5/16" Wall fixing bolts (various sizes), Anti-Vibration Washers, Wall-Spacers, Washers, Nuts, and Bolt Sleeves.



Type 2 shown.

| PART NO. | DESCRIPTION | SAFE WORKING LOAD* | CROSSBAR | UPRIGHT | SUPPORT ARM |
|--------------|-------------------------|--------------------|----------|---------|-------------|
| BR1-M | Type 1 Bracket - Medium | 200 lbs | - | 1' 8" | 1' 9" |
| BR1-L | Type 1 Bracket - Large | 310 lbs | - | 1' 10" | 1' 11" |
| BR2-M | Type 2 Bracket - Medium | 200 lbs | 2' 11" | 1' 8" | 1' 8" |
| BR2-L | Type 2 Bracket - Large | 310 lbs | 3' 5" | 1' 10" | 1' 9" |
| BR3-M | Type 3 Bracket - Medium | 200 lbs | 2' 11" | 1' 8" | 1' 8" |
| BR3-L | Type 3 Bracket - Large | 310 lbs | 3' 5" | 1' 10" | 1' 9" |

* All brackets are tested to twice the safe working loads.

LIGHTWEIGHT & HEAVY DUTY COLLECTION TRAYS

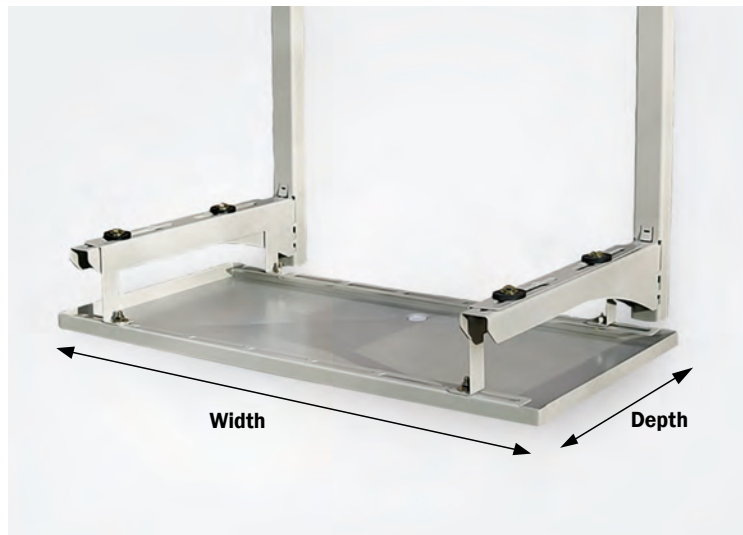
The condensate collection trays are supplied with attachment arms which can be mounted to the brackets (page 24). All components are covered in a scratch resistant powder coating to RAL 7032 to match most brands of ductless split systems. Three sizes are available to suit most applications.

Lightweight Features:

- Easy to install
- Tapered outlet fits 5/8" hose and 3/4" hose
- Flat packed with all components
- Available in two sizes
- One piece molded plastic

Heavy Duty Features:

- Concave profile ensures effective water drainage
- 1/2" BSP male thread on drain outlet
- Available in three sizes



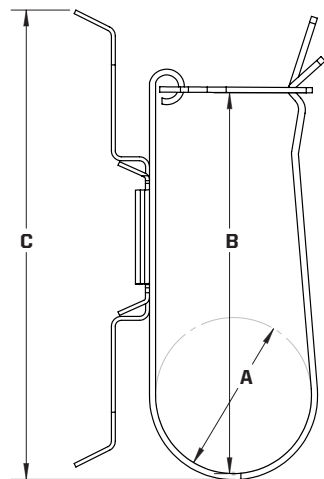
| PART NO. | DESCRIPTION | WIDTH | DEPTH |
|------------------|--------------------------------|-------|-------|
| CCT-790 | Lightweight Tray - Small | 2' 7" | 1' 3" |
| CCT-940 | Lightweight Tray - Large | 3' 1" | 1' 4" |
| CCTM-800 | Heavy Duty Metal Tray - Small | 2' 7" | 1' 3" |
| CCTM-1100 | Heavy Duty Metal Tray - Medium | 3' 7" | 1' 3" |
| CCTM-1400 | Heavy Duty Metal Tray - Large | 4' 7" | 1' 3" |

TRH HANGER SYSTEM

Supports a pair of insulated flow and return refrigerant lines on 1/4" to 3/8" threaded rod. Simply fold the lock-tab over to secure the lines into the strap. The spring steel hanger grips the rod tightly, and the black zinc coating offers corrosion resistance while matching the insulation color. The clamp can be detached from the rod hanger and used to secure lines to flat surfaces.



| PART NO. | THREADED ROD DIAMETER | A | B | C |
|--------------------|-----------------------|------|------|------|
| TRH-2 (PACK OF 10) | 1/4" - 3/8" | 1.28 | 3.12 | 3.82 |
| TRH-3 (PACK OF 10) | 1/4" - 3/8" | 1.40 | 3.28 | 3.70 |
| TRH-4 (PACK OF 10) | 1/4" - 3/8" | 2.40 | 4.17 | 5.00 |
| TRH-5 (PACK OF 5) | 1/4" - 3/8" | 3.38 | 6.26 | 7.03 |



Works with 1/4"- 3/8" threaded rod

Supports a pair of insulated liquid and suction lines

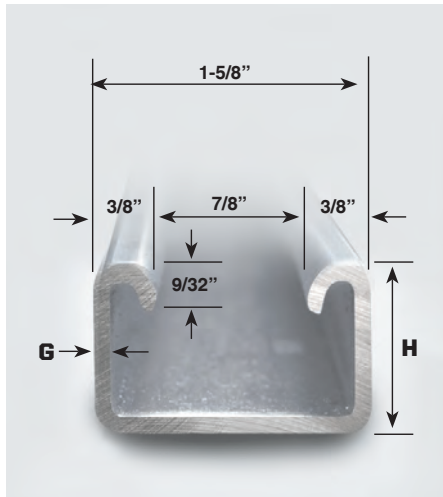
Spring steel rod hanger can be fitted or adjusted in seconds



ANCHOR CHANNEL PART NUMBERS AND SPECIFICATIONS

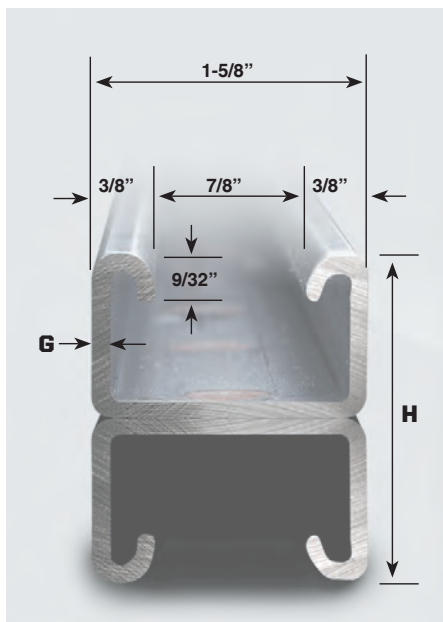
For mounting cushion clamp assemblies.
Available in single or double format (two channels welded back-to-back).

SINGLE ANCHOR CHANNEL



| PART NO. | HEIGHT (H) | GAUGE (G) | MATERIAL | LENGTH |
|--------------|------------|-----------|------------|--------|
| 121048-1-203 | 1" | 12 GA. | Mild Steel | 48" |
| 121120-1-203 | 1" | 12 GA. | Mild Steel | 120" |
| 121048-1-202 | 7/8" | 12 GA. | Mild Steel | 48" |
| 121120-1-202 | 7/8" | 12 GA. | Mild Steel | 120" |
| 121048-1-101 | 13/16" | 14 GA. | Mild Steel | 48" |
| 121120-1-101 | 13/16" | 14 GA. | Mild Steel | 120" |
| 121048-5-101 | 13/16" | 14 GA. | 304 SS | 48" |
| 121120-5-101 | 13/16" | 14 GA. | 304 SS | 120" |
| 121048-6-101 | 13/16" | 14 GA. | 316 SS | 48" |
| 121120-6-101 | 13/16" | 14 GA. | 316 SS | 120" |

DOUBLE ANCHOR CHANNEL



| PART NO. | HEIGHT (H) | GAUGE (G) | MATERIAL | LENGTH |
|--------------|------------|-----------|------------|--------|
| 122048-1-203 | 2" | 12 GA. | Mild Steel | 48" |
| 122120-1-203 | 2" | 12 GA. | Mild Steel | 120" |
| 122048-1-202 | 1-3/4" | 12 GA. | Mild Steel | 48" |
| 122120-1-202 | 1-3/4" | 12 GA. | Mild Steel | 120" |
| 122048-1-101 | 1-5/8" | 14 GA. | Mild Steel | 48" |
| 122120-1-101 | 1-5/8" | 14 GA. | Mild Steel | 120" |
| 122048-5-101 | 1-5/8" | 14 GA. | 304 SS | 48" |
| 122120-5-101 | 1-5/8" | 14 GA. | 304 SS | 120" |
| 122048-6-101 | 13/16" | 14 GA. | 316 SS | 48" |
| 122120-6-101 | 13/16" | 14 GA. | 316 SS | 120" |

Note: Special lengths are available; please contact your local distributor or the factory. All special cut tolerances are ~1/8".



HYDRA-ZORB® COMPONENT PARTS LIST*

| PART NO. OD TUBE SERIES | OD TUBE SIZE | PART NO. NOM PIPE SIZE | NOM PIPE SIZE | PART NO. MM SERIES | MM SIZE | CUSHION NUMBER | CUSHION ID SIZE (inches) | CUSHION ID SIZE (mm) | CLAMP NUMBER | CLAMP SIZE (inches) | FASTENER |
|-------------------------------|--------------------|------------------------------|---------------------|--------------------------|------------|-------------------|--------------------------------|----------------------------|-----------------|------------------------|----------|
| 100025 | 1/4" | | | 6MMHZ | 6 | 1 .250 | 0.250 | 6.3 | 101037 | 0.375 | 1/4-20 |
| 100031 | 5/16" | | | 8MMHZ | 8 | 1 .312 | 0.312 | 7.9 | 101050 | 0.500 | 1/4-20 |
| 100037 | 3/8" | | | 10MMHZ | 10 | 1 .375 | 0.375 | 9.5 | 101050 | 0.500 | 1/4-20 |
| 100047 | .47" | | | 12MMHZ | 12 | 1 .470 | 0.470 | 11.9 | 101062 | 0.625 | 1/4-20 |
| 100050 | 1/2" | | | 13MMHZ | 13 | 1 .500 | 0.500 | 12.7 | 101062 | 0.625 | 1/4-20 |
| | | 200025 | 1/4" | 14MMHZ | 14 | 2 .250 | 0.540 | 13.7 | 101067 | 0.675 | 1/4-20 |
| | | | | 15MMHZ | 15 | 1 .625 | 0.625 | 15.9 | 101067 | 0.675 | 1/4-20 |
| 100062 | 5/8" | | | 16MMHZ | 16 | 1 .625 | 0.625 | 15.9 | 101075 | 0.750 | 1/4-20 |
| | | 200037 | 3/8" | 17MMHZ | 17 | 2 .375 | 0.675 | 17.1 | 101084 | 0.840 | 1/4-20 |
| | | | | 18MMHZ | 18 | 2 .375 | 0.675 | 17.1 | 101087 | 0.875 | 1/4-20 |
| 100075 | 3/4" | | | 19MMHZ | 19 | 1 .750 | 0.750 | 19.0 | 101100 | 1.000 | 1/4-20 |
| | | | | 20MMHZ | 20 | 1 .750 | 0.750 | 19.0 | 101100 | 1.000 | 1/4-20 |
| | | 200050 | 1/2" | | 21 | 2 .500 | 0.840 | 21.3 | 101112 | 1.125 | 1/4-20 |
| 100087 | 7/8" | | | 22MMHZ | 22 | 1 .875 | 0.875 | 22.2 | 101112 | 1.125 | 1/4-20 |
| | | | | 25MMHZ | 25 | 1 1.00 | 1.000 | 25.0 | 100125 | 1.250 | 1/4-20 |
| 100100 | 1" | | | 26MMHZ | 26 | 1 1.00 | 1.000 | 25.4 | 101125 | 1.250 | 1/4-20 |
| | | 200075 | 3/4" | 27MMHZ | 27 | 2 .750 | 1.050 | 28.0 | 101137 | 1.375 | 1/4-20 |
| 100112 | 1-1/8" | | | 28MMHZ | 28 | 1 1.12 | 1.125 | 29.2 | 101137 | 1.375 | 1/4-20 |
| 100119 | 1.19" | | | 30MMHZ | 30 | 1 1.19 | 1.190 | 30.2 | 101150 | 1.500 | 1/4-20 |
| 100125 | 1-1/4" | | | 32MMHZ | 32 | 1 1.25 | 1.250 | 31.8 | 101150 | 1.500 | 1/4-20 |
| | | 200100 | 1" | 34MMHZ | 34 | 2 1.00 | 1.315 | 33.5 | 101175 | 1.750 | 5/16-18 |
| 100137 | 1-3/8" | | | 35MMHZ | 35 | 1 1.37 | 1.375 | 34.9 | 101162 | 1.620 | 5/16-18 |
| 100150 | 1-1/2" | | | 38MMHZ | 38 | 1 1.50 | 1.500 | 38.1 | 101175 | 1.750 | 5/16-18 |
| | | | | 40MMHZ | 40 | 1 1.50 | 1.500 | 40.0 | 101187 | 1.870 | 5/16-18 |
| 100162 | 1-5/8" | | | | 41 | 1 1.62 | 1.625 | 41.1 | 101187 | 1.870 | 5/16-18 |
| | | 200125 | 1-1/4" | 42MMHZ | 42 | 2 1.25 | 1.660 | 42.2 | 101200 | 2.000 | 5/16-18 |
| 100175 | 1-3/4" | | | 45MMHZ | 45 | 1 1.75 | 1.750 | 44.5 | 101200 | 2.000 | 5/16-18 |
| 100187 | 1-7/8" | 200150 | 1-1/2" | 48MMHZ | 48 | 2 1.50 | 1.900 | 48.2 | 101225 | 2.250 | 5/16-18 |
| | | | | 50MMHZ | 50 | 1 2.00 | 2.000 | 50.0 | 101225 | 2.250 | 5/16-18 |
| 100200 | 2" | | | 51MMHZ | 51 | 1 2.00 | 2.000 | 50.8 | 101225 | 2.250 | 5/16-18 |
| 100212 | 2-1/8" | | | 54MMHZ | 54 | 1 2.12 | 2.125 | 54.1 | 101250 | 2.500 | 5/16-18 |
| 100225 | 2-1/4" | | | | 57 | 1 2.25 | 2.250 | 57.1 | 101275 | 2.750 | 5/16-18 |
| 100237 | 2-3/8" | 200200 | 2" | 60MMHZ | 60 | 2 2.00 | 2.375 | 60.4 | 101275 | 2.750 | 5/16-18 |
| | | | | 63MMHZ | 63 | 1 2.50 | 2.500 | 63.0 | 101300 | 3.000 | 5/16-18 |
| 100251 | 2-1/2" | | | 64MMHZ | 64 | 1 2.50 | 2.500 | 63.5 | 101300 | 3.000 | 5/16-18 |
| 100262 | 2-5/8" | | | 66MMHZ | 66 | 1 2.62 | 2.625 | 66.5 | 101300 | 3.000 | 5/16-18 |
| | 2-7/8" | 200250 | 2-1/2" | 72MMHZ | 72 | 2 2.50 | 2.875 | 73.2 | 101337 | 3.370 | 5/16-18 |
| | | | | 75MMHZ | 75 | 1 3.00 | 3.000 | 75.0 | 101337 | 3.370 | 5/16-18 |
| 100300 | 3" | | | | 77 | 1 3.00 | 3.000 | 76.2 | 101350 | 3.500 | 5/16-18 |
| 100312 | 3-1/8" | | | 80MMHZ | 80 | 1 3.12 | 3.120 | 79.2 | 101350 | 3.500 | 5/16-18 |
| 100337 | 3-3/8" | | | | 86 | 2 3.00 | 3.370 | 88.9 | 101375 | 3.750 | 3/8-16 |
| | 3-1/2" | 200300 | 3" | 90MMHZ | 90 | 2 3.00 | 3.500 | 88.9 | 101387 | 3.875 | 3/8-16 |
| 100362 | 3-5/8" | | | | 92 | 2 3.00 | 3.625 | 88.9 | 101400 | 4.000 | 3/8-16 |
| 100400 | 4" | 200350 | 3-1/2" | | 102 | 2 3.50 | 4.000 | 101.6 | 101450 | 4.500 | 3/8-16 |
| 100412 | 4-1/8" | | | | 105 | 2 3.50 | 4.120 | 105.0 | 101462 | 4.625 | 3/8-16 |
| 100425 | 4-1/4" | | | | 108 | 2 3.50 | 4.250 | 108.0 | 101475 | 4.750 | 3/8-16 |
| 100431 | | | | 110MMHZ | 110 | 2 4.00 | 4.310 | 111.0 | 101487 | 4.875 | 3/8-16 |
| 100437 | 4-3/8" | | | | 111 | 2 4.00 | 4.370 | 111.0 | 101487 | 4.875 | 3/8-16 |
| | 4-1/2" | 200400 | 4" | | 113 | 2 4.00 | 4.500 | 113.0 | 101500 | 5.000 | 3/8-16 |
| 100462 | 4-5/8" | | | | 118 | 2 4.00 | 4.620 | 118.0 | 101512 | 5.125 | 3/8-16 |
| 100492 | | | | 125MMHZ | 125 | 2 4.00 | 4.920 | 125.0 | 101550 | 5.500 | 3/8-16 |
| 100500 | 5" | | | | 127 | 1 5.12 | 5.000 | 127.0 | 101550 | 5.500 | 3/8-16 |
| 100512 | 5-1/8" | | | | 130 | 1 5.12 | 5.125 | 130.0 | 101550 | 5.500 | 3/8-16 |
| | | 200500 | 5" | | 141 | 2 5.00 | 5.563 | 141.2 | 101600 | 6.000 | 3/8-16 |
| 100600 | 6" | | | | 152 | 1 6.12 | 6.000 | 152.0 | 101637 | 6.375 | 3/8-16 |
| 100612 | 6-1/8" | | | | 155 | 1 6.12 | 6.125 | 155.0 | 101637 | 6.375 | 3/8-16 |
| 100631 | | | | 160MMHZ | 160 | 2 6.00 | 6.310 | 160.0 | 101637 | 6.375 | 3/8-16 |
| 100637 | 6-3/8" | | | | 162 | 2 6.00 | 6.370 | 162.0 | 101675 | 6.750 | 3/8-16 |
| 100650 | 6-1/2" | | | | 165 | 2 6.00 | 6.500 | 165.0 | 101700 | 7.000 | 3/8-16 |
| | 6-5/8" | 200600 | 6" | | 165 | 2 6.00 | 6.625 | 165.0 | 101700 | 7.000 | 3/8-16 |
| | 8-5/8" | 200800 | 8" | | 200 | 2 8.00 | 8.625 | 200.0 | 101912 | 9.125 | 3/8-16 |

* See Terms and Conditions of Sale

TERMS AND CONDITIONS OF SALE

Agreements:

All agreements are subject to availability of material, accidents, or other causes beyond our control.

Warranty:

Hydra-Zorb Co. (Company), warrants only products manufactured by Company to be free from defects for a period of 12 months from shipment date. Products must be used for their intended purpose. If goods are found to be defective, Company will replace the product but will not be responsible for labor or expense of replacing or repairing defective goods or damage resulting from same. The Company makes no other warranty of any kind, expressed or implied. Any implied warranties made by resellers of Company's product are hereby disclaimed by Company and are excluded from this warranty. Warranty will be void if Company manufactured clamps and/or cushions are substituted with components produced by other manufacturers.

Claims:

No claims for shortages allowed unless made in writing within ten days of receipt of goods. All materials sent out will be carefully examined, counted, and packed. Claims for goods damaged or lost in transit should be made to the carrier, as our responsibility ceases on delivery to the carrier.

Returns:

Complete customer satisfaction is our goal. However, if our product does not meet your expectations, we offer the following return policies:

1. Return requests must occur within 30 days of shipment. No return requests will be honored more than 30 days after the original shipment date.
2. All returns are at the discretion of the Company, and we reserve the right to limit or refuse a return for any reason.
3. Special order products cannot be returned. This includes, but is not limited to, custom labeled product, all anchor channel, and stainless steel, hot-dip galvanized and aluminum assemblies.
4. Requests to return product must be accompanied by the original invoice number, sales order number, or purchase order number on which the purchase occurred.

5. Return Material Authorization (RMA) must be issued by Company before return shipment occurs. RMA # must be clearly marked on all packages.

6. Product returns are subject to a 35% restocking fee. Parts must be in unopened, saleable condition, and include all component parts.

7. Upon receipt of the return, product will be inspected. Any parts requiring new packaging will be subject to a 50% restocking fee.

8. Return freight charges must be prepaid by Customer.

9. Upon inspection of parts, a credit will be issued to your account which may be applied to open invoices or future invoices. Cash refunds will not be issued.

10. This Agreement and the rights and obligations of the parties hereunder shall be governed exclusively by the applicable laws of the State of Michigan. Further any and all disputes hereunder shall be resolved exclusively by the courts located in Oakland County, Michigan and the parties stipulate to exclusive jurisdiction in Oakland County, Michigan to resolve any said disputes.

11. Any and all costs and expenses of the Company, including all reasonable attorney fees, incurred in enforcing its rights hereunder shall be recoverable from Purchaser hereunder.

Terms And Design:

Subject to change without notice. Refer to current price list for terms of sale. Hydra-Zorb reserves the right to revise product design and data, product offerings, and catalog without notification.

Freight Terms:

All prices are F.O.B. point of shipment.

Dimensions And Weights:

Although the Company makes every attempt to be as accurate as possible, all listed dimensions and weights are approximations and are not guaranteed.

International Shipments:

Purchaser is responsible for any import duty or fees related to your purchase.

THE ORIGINAL CUSHION CLAMP | SINCE 1966



www.hydra-zorb.com

1751 Summit Drive
Auburn Hills, MI 48326
ph: 248-373-5151
fax: 248-373-0711

