

HERITAGE™

CAST IRON BOILERS

Heritage, Affordable Luxury Designed for reliability, performance, value, and ease of installation.

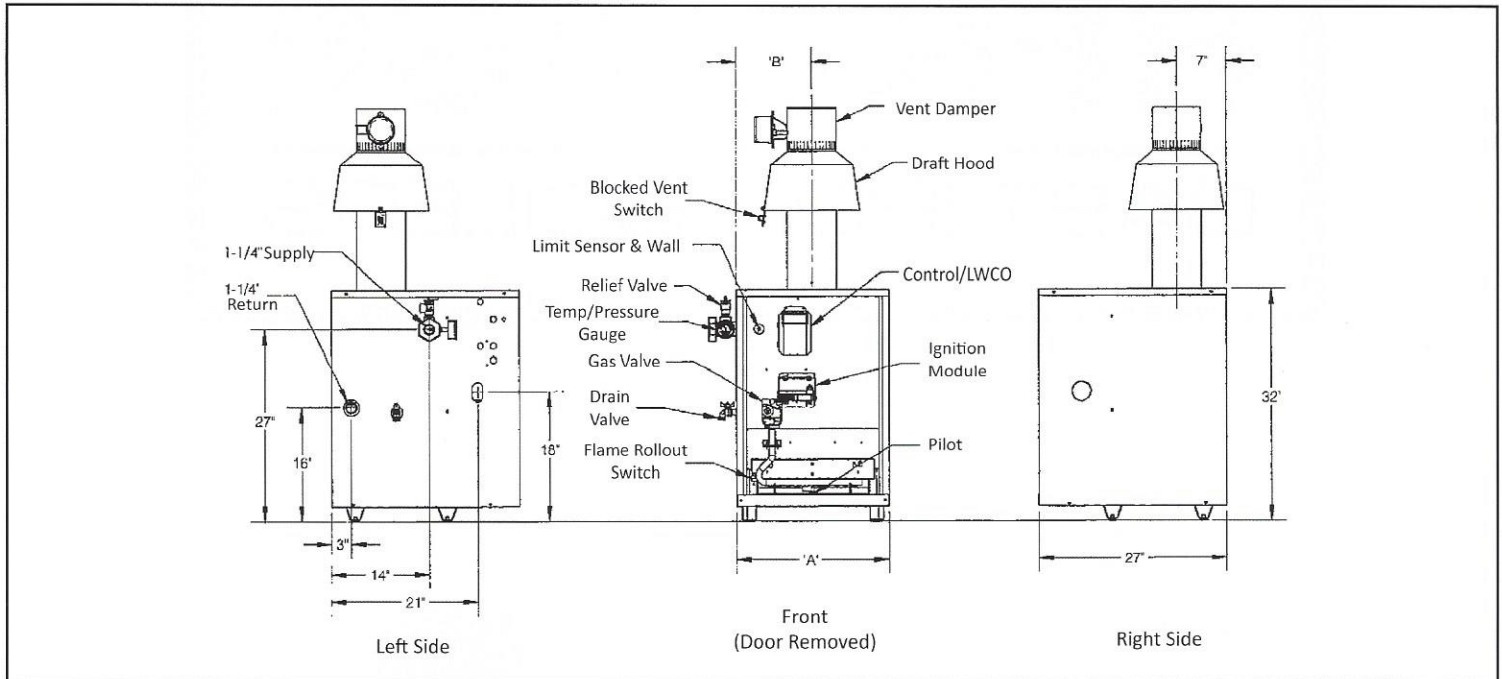
- 38,000-167,000 BTUs in 5 sizes
- Reliable cast iron heat exchanger
- DOE 2012-Compliant energy saving control system with integral low water cut-off protection
- Draft hood equipped appliance
- Progressive-opening gas valve for smooth & quiet operation
- Attractive, rugged powder coated steel jacket
- Can be installed on combustible floors
- Trapezoidal legs with nylon glides aid in positioning boiler during installation
- Industry-standard tapping locations, provides drop-in replacement for most applications
- Limited lifetime warranty
- 84% AFUE efficiency
- Meets DOE 2021 government requirements



Unit shown with components installed.
See Technical Specifications on back for shipping configuration.

FOR RESIDENTIAL AND LIGHT COMMERCIAL APPLICATIONS

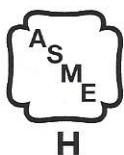
HERITAGE TECHNICAL SPECIFICATIONS



Standard Equipment: Vent Damper, Taco 007E Circulator, drain valve, ASME relief valve (30PSI), circulator to limit control wire harness and connecting piping shipped in parts box. HydroLevel Fuel Smart HydroStat 3200 Plus Smart Boiler Limit Control with digital display and low water cutoff functionality, Honeywell progressive opening gas valve, roll-out switch and spill switch are assembled at the factory.

Model	"A" Dimension	"B" Dimension	Input Rate (MBH)	Heating Capacity (MBH)	Net AHRI (MBH)	No. of Burners	AFUE	Flue Collar Diameter (Inches)	Water Content (gals.)	Shipping Weight (Approx.)
HG02E	14"	6.25"	38	32	28	2	84	3	1	202
HG03E	14"	6.25"	67	56	49	4	84	4	2	241
HG04E	16"	7.75"	100	84	73	6	84	5	3	292
HG05E	19"	9.25"	134	113	98	8	84	6	4	341
HG06E	22"	10.75"	167	140	122	10	84	6	5	390

1. Standard piping/control system is left side.
2. For altitudes above 2,000 feet, use appropriate conversion kit.
3. Specifications and dimensions are subject to change without notice.
4. Ratings are for natural gas and LP gas.
5. All boilers are factory equipped for natural gas and field convertible with appropriate conversion kit for LP gas.



HERITAGE BOILERS OFFERED BY:

TDC Manufacturing Inc.

155 RT. 61 SOUTH • SCHUYLKILL HAVEN, PA 17972
 (570) 385-0731 • FAX (570) 385-5304