

Thermometers and Gauges

Sweat and Threaded Thermometers with Thermowells



Thermometer with Sweat or Threaded Connection.

- Brass thermowell is included to allow the thermometer to be removed without draining the system.
- 2 inch or 2 1/2 inch Dial.

Materials: Case: steel; Well: brass

Temperature Range: 32 F to 250 F (0 C to 121 C)

Connection Size: 1/2 in.

Product Number	Connection Type	Dial Size		Length		Weight	
		(inch)	(mm)	(inch)	(mm)	(lb)	(kg)
GS200	Sweat	2 in.	51 mm	1 1/4 in.	51 mm	0.21 lb	0.095 kg
GS250	Sweat	2 1/2 in.	63.5 mm	1 1/4 in.	51 mm	0.25 lb	0.114 kg
GT161	NPT	2 in.	51 mm	1 1/2 in.	51 mm	0.21 lb	0.095 kg
GT162	NPT	2 1/2 in.	63.5 mm	1 1/2 in.	51 mm	0.25 lb	0.114 kg

Tridicators



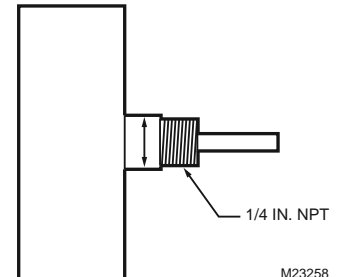
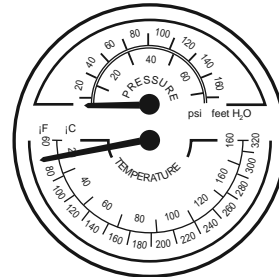
Pressure/temperature gauge with relief set point indicator for boilers and shut off valve.

Temperature Range: 60 F to 320 F (15 C to 160 C)

Connection Size: 1/4 in.

Connection Type: NPT

Maximum Operating Pressure: 75 psi



M23258

Product Number	Dial Size		Length		Weight		Comments
	(inch)	(mm)	(inch)	(mm)	(lb)	(kg)	
TD-090	3 1/8 in.	79.4 mm	1 21/32 in.	23 mm	0.3 lb	0.14 kg	Pressure/temperature gauge with relief set point indicator
TD-165	3 1/8 in.	79.4 mm	2 in.	42.1 mm	0.3 lb	0.14 kg	Pressure/temperature gauge with relief set point indicator
TDV-040	3 1/8 in.	79.38 mm	29/32 in.	23.02 mm	0.4 lb	0.18 kg	Pressure/temperature gauge with relief set point indicator and shut off valve