

**We Deliver Innovative Vent & Condensate Management Solutions.**

**PTS** **PROTECH SYSTEMS, INC.**  
LEADERS IN VENTING TECHNOLOGY



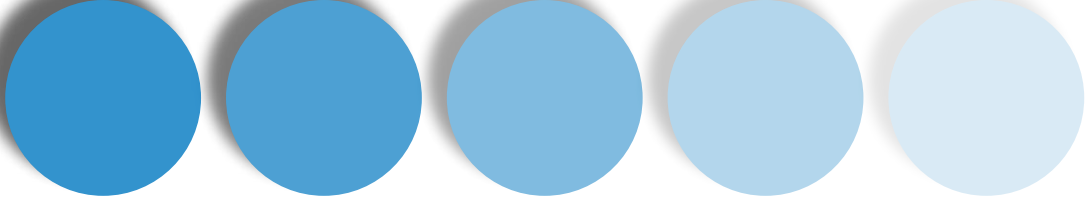
**Product Family  
Catalog**

- [Index](#)
- [ProTech Systems](#)
- [Material Selection](#)
- [Appliance Adapters](#)
- [FasNSeal®](#)
- [FasNSeal®W2](#)
- [FasNSmooth®/FasNFlex®](#)
- [FasNClamp®](#)
- [Ventinox®](#)
- [Chimney Insulation](#)



[www.protechinfo.com](http://www.protechinfo.com)





# FasNSeal® Direct Vent System

## Ease of Installation is an Understatement

FasNSeal® Product Series

Proven since 1996, **FasNSeal®** features a **smooth weld seam inside and out**, which is completely shielded during the TIG welding process. Contamination or molecular changes in the weld seam are avoided; no fillers are used in the welding process.

Tube ends are formed under the most **stringent quality standards** to guarantee a perfect fit every time and to avoid built-in stress points or weak areas.

Each vent length and component features a **built-in mechanical locking band and gasket**. Parts are simply pushed together to a stop bead, which renders the joints air and water-tight. By tightening the integrated mechanical locking band, **parts are fastened together in seconds**. **FasNSeal®** can be taken apart and reassembled in minutes, making **inspection, maintenance or rerouting of FasNSeal® systems a breeze**. Should a part or gasket ever become damaged, replacement takes less than five minutes and the integrity of the system is not compromised!

Adjustable vent lengths featured in our Wall Thimbles allow for **built-in horizontal adjustability without the need for cutting pipe**. Our standard Adjustable Vent Length allows 14" of adjustment, making pitching **FasNSeal®** to properly drain condensate simple. Connecting **FasNSeal®** to a heater is done efficiently with one of our many adapters approved by UL (Underwriters Laboratories) and heating appliance manufacturers. **No silicone is required** so the heating equipment can be fired up immediately upon completing a **FasNSeal®** installation. **No cure time or cleanup is required**. **PTS listened to the installer and came up with the perfect way to join FasNSeal® parts; no cutting, no exterior clamps, no joints to wipe with alcohol, no rings, no tabs, no mess to clean.**

## Applications

**FasNSeal®** is a Special **Gas Vent and Gas Vent Connector**, made from AL29-4C® stainless steel and designed for use on natural gas or propane-fired appliances listed as Category II, III and IV or in Canada Type BH Gas Vent Systems having a maximum rated operating temperature of 480° F and maximum positive pressure of 6" water column.

**FasNSeal®** provides **horizontal or vertical venting** for high efficiency gas boilers, furnaces, booster heaters, pool heaters, water heaters, unit heaters or tankless water heaters.

**FasNSeal®** may also be used as a vent for Category I, natural gas or propane-fired heaters.

**FasNSeal®** must be sized according to the heating appliance manufacturers instructions, NFPA 211, NFPA 54 and any other relevant local building codes and regulations (see installation instructions for details!).

### WHEN DOES

AL29-4C stainless steel • precision TIG-welded seams • patented built-in locking bands • triple-lipped directional gaskets • standard adjustable vent lengths

### BECOME A SUPERIOR GAS VENT & CONDENSATE MANAGEMENT SYSTEM?

When they are engineered into advanced systems that contain quality silicone free components with welded seams



**FasNSeal®**  
Single & Double Wall 

**PTS** PROTECH SYSTEMS, INC.  
LEADERS IN VENTING TECHNOLOGY

800.766.3473  
www.protechinfo.com  
sales@protechinfo.com

Innovation is the result of problems, frustration and never settling for what's available to the market. ProTech Systems is driven by successful results that assist you and your business with all of your venting needs.



# FasNSeal® Direct Vent System

Ease of Installation is an Understatement

FasNSeal® Product Series

## Technical Specifications

FasNSeal® has been tested and is listed by Underwriters Laboratories, Inc. to UL 1738 and ULC-S636-95.

CLEARANCES TO COMBUSTIBLES					
Rated Operating Temperature	Enclosed			Unenclosed	
	Hor	Vert	Hor	Vert	
3" & 4"	Sides: 8" / 203.2mm		4"	1"	1"
	Top: 12" / 304.8mm		101.6mm	25.4mm	25.4mm
5" to 16"	Bottom: 4" / 101.6mm		4"	3"	1"
			101.6mm	76.2mm	76.2mm
300 F / 149 C	Noncombustible enclosure			3"	3"
				76.2mm	76.2mm
480 F / 249 C				3"	3"
				76.2mm	76.2mm

Rated Operating Temperature of 300°F = Max Flue Gas Temperature of 375°F  
 Rated Operating Temperature of 480°F = Max Flue Gas Temperature of 550°F

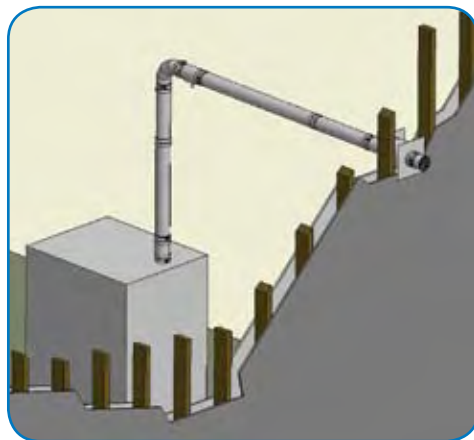
Material Thickness	
Inner Wall	
3" - 7" (76.2mm - 177.8mm)	.016" (.4mm)
8" - 12" (203.2mm - 304.8mm)	.019" (.5mm)
14" - 16" (355.6mm - 406.4mm)	.024" (.6mm)



## Installation Techniques

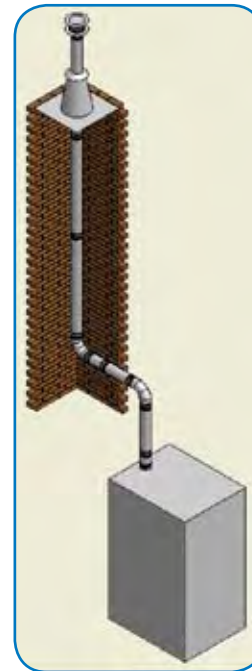


FasNSeal® Vertical - Through the roof installation



FasNSeal® Horizontal - Through the wall installation

FasNSeal® Existing Masonry Chimney Installation



FasNSeal®W2 Double Wall & FasNSeal Single Wall are Interchangeable with an Adapter (Pg. 55)

# FasNSeal® Direct Vent System

Ease of Installation is an Understatement

New Innovative Products from  
The Leaders In Venting Technology

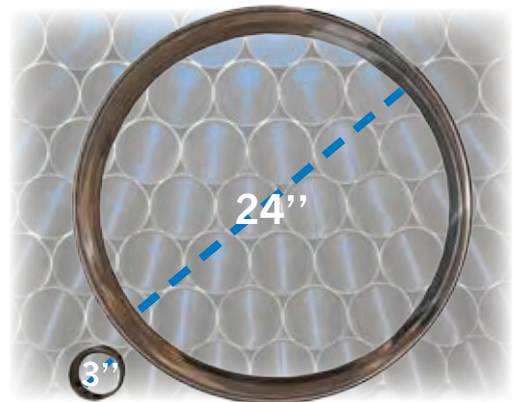
PTS' mission is to progress the industry by designing and manufacturing parts and components to aid in high efficiency venting, provide for convenient installations and fit your unique needs no matter the situation.

**"Custom Parts are Our Specialty"**

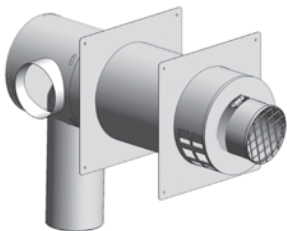
FasNSeal® Product Series

## FasNSeal® Large Diameters (Up-To 24")

Many commercial applications require large diameter vent systems due to the heating unit(s) size and output. PTS' large diameters are available in single and double wall. These larger diameters are still equipped with our patented triple-lipped directional gasket and built-in locking band which provide for the most convenient installation possible.



## FasNSeal® Concentric Termination Systems



Universal Concentric

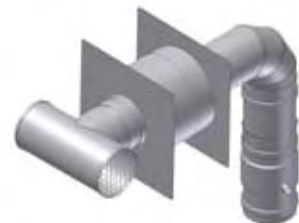


3-5 Concentric

Sealed Combustion Systems require air in-take as well as an exhaust path. PTS' Concentrics provide the perfect solution with a contemporary look. These systems are compatible with most appliances and are available in multiple configurations and sizes; Universal (compatible with right & left hand air in-takes), 3-5 Concentric, Remote (for appliances mounted within the building & right hand left hand specific).

## FasNSeal® Severe Weather Kit

Wet & cold weather is the reason we use boilers & tankless water heaters. For the people that endure these conditions on a regular basis, we introduced the **Severe Weather Kit**. Designed to prevent our appliance from freezing up while maintaining an obstruction free exhaust venting. Add a 90° elbow & vent length to clear the snow line (see pg. 44 for specs). Bring on the Cold. We'll provide the worry free venting.



# FasNSeal® Direct Vent System

Ease of Installation is an Understatement

## FasNSeal® Condensate Management Systems & Components

The continued drive to produce more efficient boilers makes condensate management a concern, not only in the upstream portion of the exhaust flue, but immediately at the boiler. This is as crucial a part of venting the boiler as the flue gases. To aid the contractor in correctly managing this, ProTech Systems is introducing a family of products specifically designed to support condensate management.



Welded Tees



Cascading Tees



Horizontal Drain Caps

2° AVL

2° Pitch



FasNSeal® Product Series

## FasNSeal® 88° Elbows (Single & Double Wall)

THE PERFECT SOLUTION FOR CONDENSATE MANAGEMENT. Today's high efficiency boilers need a 2° pitch back to the appliance. This requires designing a pitched horizontal run. With our new 2° Appliance Adapter with Condensate Drain and 88° elbow provides the right fit for returning to a straight vertical run. If you are currently using a 90° elbow for this application, the system is being "stressed" and can cause problems in the future. WHEN THE JOB CALLS FOR HIGH QUALITY, CALL ON PROTECH FOR THE RIGHT SOLUTIONS.

Vent Dia.	Product Number	Part Number
3	303890	FSELB8803
4	303891	FSELB8804
5	303892	FSELB8805
6	303893	FSELB8806
7	303894	FSELB8807
8	303895	FSELB8808
9	303896	FSELB8809
10	303897	FSELB8810
12	303898	FSELB8812
14	303899	FSELB8814
16	303900	FSELB8816
18	303901	FSELB8818
20	303902	FSELB8820
22	303903	FSELB8822
24	303904	FSELB8824

10

### Double Wall W2



### Single Wall

Vent Dia.	Product Number	Part Number
3	103890	W2-8803
4	103891	W2-8804
5	103892	W2-8805
6	103893	W2-8806
7	103894	W2-8807
8	103895	W2-8808
9	103896	W2-8809
10	103897	W2-8810
12	103898	W2-8812
14	103899	W2-8814
16	103900	W2-8816
18	103901	W2-8818
20	103902	W2-8820
22	103903	W2-8822
24	103904	W2-8824

18

### ReThink Green

The issue of properly managing condensates reaches beyond protecting the appliance and the vent system. Protecting our environment from the highly toxic contaminants of condensates is the greatest reason to design your system with FasNSeal® Components. ProTech designs FasNSeal® to properly manage condensates with the use of AL29-4C® stainless steel. The only choice for sustainability. ProTech designs for a big impact on your bottom line but the smallest impact on our world.

## FasNSeal® 2° Appliance Adapter w/ Condensate Drain

Today's high efficiency boilers are naturally evolving, they want to control condensates at the boiler which means you have to pitch your venting system back to the appliance. Our **NEW** 2° Appliance Adapter w/ Condensate Drain is the perfect start to your run. Take the guessing out of the equation and manage hazardous condensates with confidence.



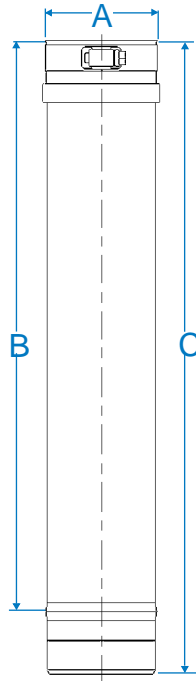
# FasNSeal® Direct Vent System

Ease of Installation is an Understatement

FasNSeal® Product Series

## FasNSeal® Vent Length 8

A Vent Dia.	B Eff. Lgth	C	Product Number	Part Number
3	4.0	6.0	300001	FSVL603
	10.0	12.0	300015	FSVL1203
	16.0	18.0	300045	FSVL1803
	22.0	24.0	300060	FSVL2403
	34.0	36.0	300075	FSVL3603
	58.0	60.0	300090	FSVL6003
4	4.0	6.0	300002	FSVL604
	10.0	12.0	300016	FSVL1204
	16.0	18.0	300046	FSVL1804
	22.0	24.0	300061	FSVL2404
	34.0	36.0	300076	FSVL3604
	58.0	60.0	300091	FSVL6004
5	4.0	6.0	300003	FSVL605
	10.0	12.0	300017	FSVL1205
	16.0	18.0	300047	FSVL1805
	22.0	24.0	300062	FSVL2405
6	4.0	6.0	300004	FSVL606
	10.0	12.0	300018	FSVL1206
	16.0	18.0	300048	FSVL1806
	22.0	24.0	300063	FSVL2406
7	4.0	6.0	300005	FSVL607
	10.0	12.0	300019	FSVL1207
	16.0	18.0	300049	FSVL1807
	22.0	24.0	300064	FSVL2407
8	4.0	6.0	300006	FSVL608
	10.0	12.0	300020	FSVL1208
	16.0	18.0	300050	FSVL1808
	22.0	24.0	300065	FSVL2408
9	4.0	6.0	300007	FSVL609
	10.0	12.0	300021	FSVL1209
	16.0	18.0	300051	FSVL1809
	22.0	24.0	300066	FSVL2409
34.0	36.0	300081	FSVL3609	



A Vent Dia.	B Eff. Lgth	C	Product Number	Part Number
10	4.0	6.0	300008	FSVL610
	10.0	12.0	300022	FSVL1210
	16.0	18.0	300052	FSVL1810
	22.0	24.0	300067	FSVL2410
	34.0	36.0	300082	FSVL3610
12	4.0	6.0	300009	FSVL612
	10.0	12.0	300023	FSVL1212
	16.0	18.0	300053	FSVL1812
	22.0	24.0	300068	FSVL2412
14	4.0	6.0	300010	FSVL614
	10.0	12.0	300024	FSVL1214
	16.0	18.0	300054	FSVL1814
	22.0	24.0	300069	FSVL2414
16	4.0	6.0	300011	FSVL616
	10.0	12.0	300025	FSVL1216
	16.0	18.0	300055	FSVL1816
	22.0	24.0	300070	FSVL2416
18	4.0	6.0	303905	FSVL618
	10.0	12.0	303909	FSVL1218
	16.0	18.0	303913	FSVL1818
	22.0	24.0	303917	FSVL2418
20	4.0	6.0	303906	FSVL620
	10.0	12.0	303910	FSVL1220
	16.0	18.0	303914	FSVL1820
	22.0	24.0	303918	FSVL2420
22	4.0	6.0	303907	FSVL622
	10.0	12.0	303911	FSVL1222
	16.0	18.0	303915	FSVL1822
	22.0	24.0	303919	FSVL2422
24	4.0	6.0	303923	FSVL3622
	4.0	6.0	303908	FSVL624
	10.0	12.0	303912	FSVL1224
	16.0	18.0	303916	FSVL1824
22.0	24.0	303920	FSVL2424	
34.0	36.0	303924	FSVL3624	

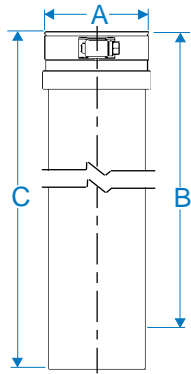


# FasNSeal® Direct Vent System

Ease of Installation is an Understatement

FasNSeal® Product Series

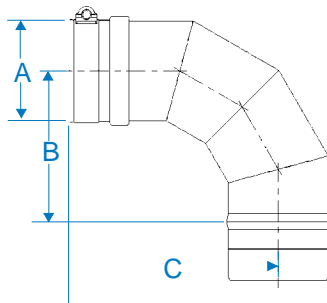
## 9 FasNSeal® Adjustable Vent Length



A Vent Dia.	B Eff. Lgth	C	Product Number	Part Number
3	2.0-14.0	18.0	300250	FSAVL3
4	2.0-14.0	18.0	300251	FSAVL4
5	2.0-14.0	18.0	300252	FSAVL5
6	2.0-14.0	18.0	300253	FSAVL6
7	2.0-14.0	18.0	300254	FSAVL7
8	2.0-14.0	18.0	300255	FSAVL8
9	2.0-14.0	18.0	300256	FSAVL9
10	2.0-14.0	18.0	300257	FSAVL10
12	2.0-14.0	18.0	300258	FSAVL12
14	2.0-14.0	18.0	300259	FSAVL14
16	2.0-14.0	18.0	300260	FSAVL16
18	2.0-14.0	18.0	303937	FSAVL18
20	2.0-14.0	18.0	303938	FSAVL20
22	2.0-14.0	18.0	303939	FSAVL22
24	2.0-14.0	18.0	303940	FSAVL24



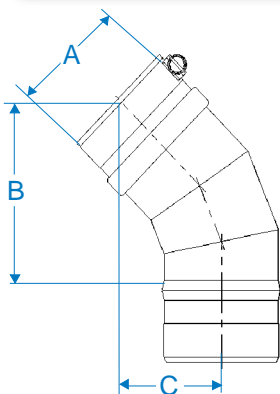
## 9 FasNSeal® 90° Elbow



A Vent Dia.	B Eff. Lgth	C	Product Number	Part Number
3	3.9	5.9	300160	FSELB9003
4	4.4	6.4	300161	FSELB9004
5	4.9	6.9	300162	FSELB9005
6	5.4	7.4	300163	FSELB9006
7	5.9	7.9	300164	FSELB9007
8	6.4	8.4	300165	FSELB9008
9	6.9	8.9	300166	FSELB9009
10	7.4	9.4	300167	FSELB9010
12	8.4	10.4	300168	FSELB9012
14	9.4	11.4	300169	FSELB9014
16	10.1	12.4	300170	FSELB9016
18	CALL	CALL	303929	FSELB9018
20	CALL	CALL	303930	FSELB9020
22	CALL	CALL	303931	FSELB9022
24	CALL	CALL	303932	FSELB9024



## 9 FasNSeal® 45° Elbow



A Vent Dia.	B Eff. Lgth	C	Product Number	Part Number
3	5.2	3.0	300130	FSELB4503
4	5.6	3.1	300131	FSELB4504
5	6.0	3.2	300132	FSELB4505
6	6.3	3.4	300133	FSELB4506
7	6.7	3.5	300134	FSELB4507
8	7.0	3.7	300135	FSELB4508
9	7.4	3.8	300136	FSELB4509
10	7.7	4.0	300137	FSELB4510
12	8.4	4.3	300138	FSELB4512
14	9.1	4.7	300139	FSELB4514
16	9.8	4.9	300140	FSELB4516
18	CALL	CALL	303925	FSELB4518
20	CALL	CALL	303926	FSELB4520
22	CALL	CALL	303927	FSELB4522
24	CALL	CALL	303928	FSELB4524

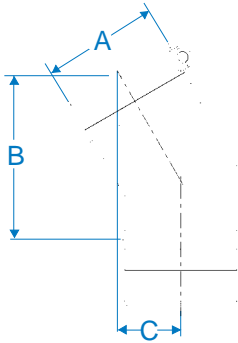


# FasNSeal® Direct Vent System

Ease of Installation is an Understatement

FasNSeal® Product Series

## FasNSeal® 30° Elbow 10



A Vent Dia.	B Eff. Lgth	C	Product Number	Part Number
3	4.9	1.8	300650	FSELB3003
4	5.2	1.9	300651	FSELB3004
5	5.4	2.0	300652	FSELB3005
6	5.7	2.0	300653	FSELB3006
7	5.9	2.1	300654	FSELB3007
8	6.1	2.2	300655	FSELB3008
9	6.4	2.2	300656	FSELB3009
10	6.7	2.3	300657	FSELB3010
12	7.2	2.4	300658	FSELB3012
14	7.7	2.6	300659	FSELB3014
16	8.2	2.7	300660	FSELB3016

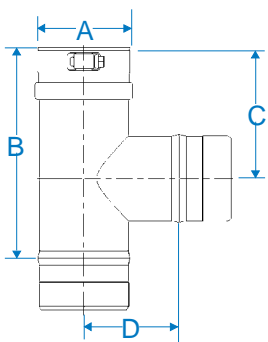


## FasNSeal® 15° Elbow 10

A Vent Dia.	Product Number	Part Number
3	300239	FSELB1503
4	300240	FSELB1504
5	300241	FSELB1505
6	300242	FSELB1506
7	300243	FSELB1507
8	300244	FSELB1508
9	300245	FSELB1509
10	300246	FSELB1510
12	300247	FSELB1512
14	300248	FSELB1514
16	300249	FSELB1516



## FasNSeal® Tee (Completely Welded, up to 10") 10



A Vent Dia.	B Eff. Lgth	C	D Eff. Lgth	Product Number	Part Number
3	7.0	4.5	3.0	300175	FST3
4	8.0	5.0	3.5	300176	FST4
5	10.0	6.0	4.0	300177	FST5
6	10.0	6.0	4.5	300178	FST6
7	12.0	7.0	5.0	300179	FST7
8	14.0	8.0	5.5	300180	FST8
9	14.0	8.0	6.0	300181	FST9
10	14.0	8.0	6.5	300182	FST10
12	16.0	9.0	7.0	300183	FST12
14	20.0	11.0	8.5	300184	FST14
16	22.0	12.0	9.5	300185	FST16
18	CALL	CALL	CALL	303933	FST18
20	CALL	CALL	CALL	303934	FST20
22	CALL	CALL	CALL	303935	FST22
24	CALL	CALL	CALL	303936	FST24





# FasNSeal® Direct Vent System

Ease of Installation is an Understatement

## 11 FasNSeal® Branch Tee (Completely Welded)

Vent Dia.	Effective Length (V)	Branch Diameter	Effective Length (H)	Product Number	Part Number
4"	8.2"	3"	3.5"	303004	FST4B3
5"	9.2"	3"	4.0"	303014	FST5B3
5"	9.2"	4"	4.0"	303015	FST5B4
6"	10.2"	3"	4.5"	301040	FST6B3
6"	10.2"	4"	4.5"	301041	FST6B4
6"	10.2"	5"	4.5"	300199	FST6B5
8"	12.2"	4"	5.5"	303047	FST8B4
8"	12.2"	5"	5.5"	303033	FST8B5

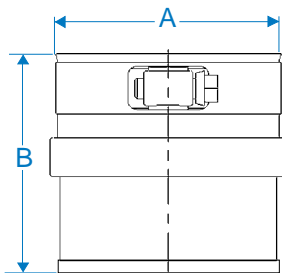


## 11 FasNSeal® Boot Tee

Vent Dia.	Effective Length (V)	Effective Length (H)	Product Number	Part Number
5"	12.5"	8.0"	301030	FSBT5
6"	13.5"	8.5"	301031	FSBT6
7"	14.5"	9.0"	301032	FSBT7
8"	15.5"	9.5"	301033	FSBT8
9"	16.5"	10.0"	301034	FSBT9
10"	17.5"	10.5"	301035	FSBT10
12"	19.5"	11.5"	301036	FSBT12
14"	21.5"	12.5"	301037	FSBT14
16"	23.5"	13.5"	301038	FSBT16



## 11 FasNSeal® Tee Cap



A Vent Dia.	B Eff. Lgth	Product Number	Part Number
3	3.0	300205	FSTC3
4	3.0	300206	FSTC4
5	3.0	300207	FSTC5
6	3.0	300208	FSTC6
7	3.0	300209	FSTC7
8	3.0	300210	FSTC8
9	3.0	300211	FSTC9
10	3.0	300212	FSTC10
12	3.0	300213	FSTC12
14	3.0	300214	FSTC14
16	3.0	300215	FSTC16
18	3.0	303941	FSTC18
20	3.0	303942	FSTC20
22	3.0	303943	FSTC22
24	3.0	303944	FSTC24



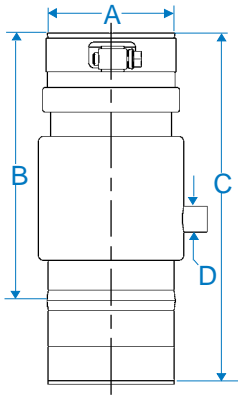
**FasNSeal Single Wall & FasNSeal®W2 Double Wall are Interchangeable with an Adapter (Pg. 43)**

# FasNSeal® Direct Vent System

Ease of Installation is an Understatement

FasNSeal® Product Series

## FasNSeal® Universal Condensate Drain 13

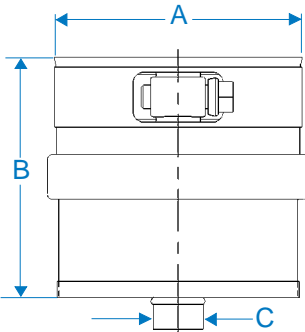


A Vent Dia.	B Eff. Lgth	C	D	Product Number	Part Number
4	6.4	8.4	.63	300960	FSUCD4
5	6.4	8.4	.63	300961	FSUCD5
6	6.4	8.4	.63	300962	FSUCD6
7	6.4	8.4	.63	300963	FSUCD7
8	6.4	8.4	.63	300964	FSUCD8
9	6.4	8.4	.63	300965	FSUCD9
10	6.4	8.4	.63	300966	FSUCD10
12	6.4	8.4	.63	300967	FSUCD12
14	6.4	8.4	.63	300968	FSUCD14
16	6.4	8.4	.63	300969	FSUCD16



Attach a standard 5/8 plastic tubing to the drain fitting for proper condensate disposal.

## FasNSeal® Drain Fitting 12



A Vent Dia.	B Eff. Lgth	C	Product Number	Part Number
3	3.0	.63	300220	FSDF3
4	3.0	.63	300221	FSDF4
5	3.0	.63	300222	FSDF5
6	3.0	.63	300223	FSDF6
7	3.0	.63	300224	FSDF7
8	3.0	.63	300225	FSDF8
9	3.0	.63	300226	FSDF9
10	3.0	.63	300227	FSDF10
12	3.0	.63	300228	FSDF12
14	3.0	.63	300229	FSDF14
16	3.0	.63	300230	FSDF16
18	3.0	.63	303945	FSDF18
20	3.0	.63	303946	FSDF20
22	3.0	.63	303947	FSDF22
24	3.0	.63	303948	FSDF24



## FasNSeal® Test Port 15

Vent Dia.	Eff. Length	Product Number	Part Number
3"	9.75"	300540	FSTP03
4"	9.75"	300541	FSTP04
5"	9.75"	300542	FSTP05
6"	9.75"	300543	FSTP06
7"	9.75"	300544	FSTP07
8"	9.75"	300545	FSTP08
9"	9.75"	300546	FSTP09
10"	9.75"	300547	FSTP10
12"	9.75"	300548	FSTP12
14"	9.75"	300549	FSTP14
16"	9.75"	300550	FSTP16



Drawings reflect Standard Vent Design in Open Position (top) and Closed Position (below). Sliding mechanism covers hole. (patent pending)

FSAAUTP is a single wall Universal Appliance Adapter with a Test Port (patent pending)

Vent Dia.	Effective Length	Product Number	Part Number
3"	10.88"	303221	FSAAUTP03
4"	10.88"	303222	FSAAUTP04
5"	10.88"	303223	FSAAUTP05
6"	10.88"	303224	FSAAUTP06
7"	10.88"	303225	FSAAUTP07
8"	10.88"	303226	FSAAUTP08
9"	10.88"	303227	FSAAUTP09
10"	10.88"	303228	FSAAUTP10
12"	10.88"	303229	FSAAUTP12
14"	10.88"	303230	FSAAUTP14
16"	10.88"	303231	FSAAUTP16



FSTP is a single wall FasNSeal® Vent Length with a Test Port (patent pending)

# FasNSeal® Direct Vent System

Ease of Installation is an Understatement

FasNSeal® Product Series

## 12 FasNSeal® IPS Drain Fitting

A Vent Dia.	Product Number	Part Number
3	303815	FSIPSDF03
4	303816	FSIPSDF04
5	303817	FSIPSDF05
6	303818	FSIPSDF06
7	303819	FSIPSDF07
8	303820	FSIPSDF08
9	303821	FSIPSDF09
10	303822	FSIPSDF10
12	303823	FSIPSDF12
14	303824	FSIPSDF14
16	303825	FSIPSDF16

IPS Threaded Drain Fitting



**Engineer:** "I need a drain fitting that can connect to an iron drain pipe to flow the acidic condensates to a neutralization tank before disposal. Do you have any parts like that?"

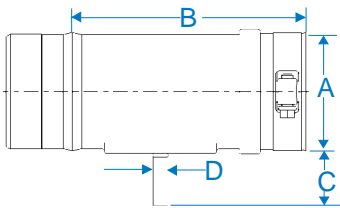
**PTS:** "No, but our engineers will develop one for you."

Innovation comes from all sorts of different places. Providing you with components that are exactly what you need now, is our business.

The **IPS** (Iron Pipe Size) **Drain Fitting** has a threaded drain nipple which connects directly to a drain system to properly discard condensates.

## Horizontal Venting

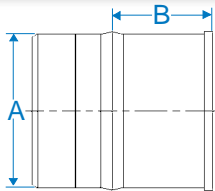
### 10 FasNSeal® Horizontal Drip Tee



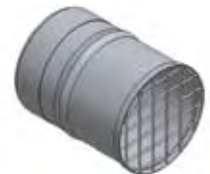
A Vent Dia.	B Eff. Lgth	C	D	Product Number	Part Number
3	6.0	1.5	.38	300236	FSHDT3
4	6.0	1.5	.38	300237	FSHDT4
5-16				Use FST & FSDF	



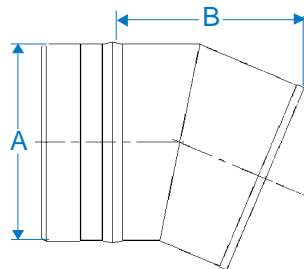
### 10 FasNSeal® Bird Screen



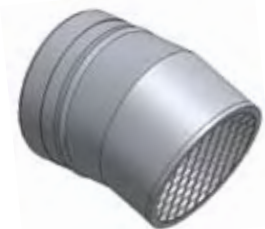
A Vent Dia.	B Eff. Lgth	Product Number	Part Number
3	2.0	300186	FSBS3
4	2.0	300187	FSBS4



### 11 FasNSeal® 23° Bird Screen



A Vent Dia.	B Eff. Lgth	Product Number	Part Number
5	4.8	300188	FSBS5
6	5.6	300189	FSBS6
7	6.4	300190	FSBS7
8	7.1	300191	FSBS8
9	7.9	300192	FSBS9
10	8.7	300193	FSBS10
12	10.2	300194	FSBS12
14	11.7	300195	FSBS14
16	13.2	300196	FSBS16

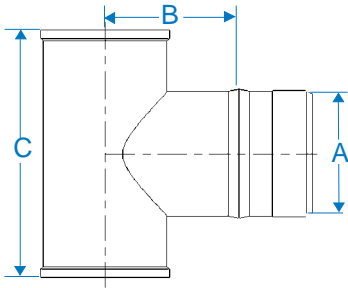


# FasNSeal® Direct Vent System

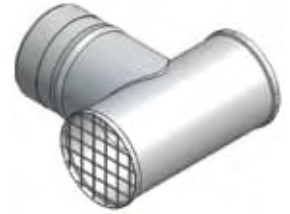
Ease of Installation is an Understatement

FasNSeal® Product Series

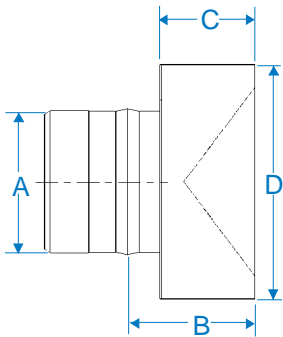
## FasNSeal® Termination Tee 11



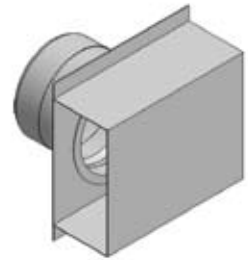
A Vent Dia.	B Eff. Lgth	C	Product Number	Part Number
3	3.0	6.0	300311	FSTT3
4	3.5	7.0	300312	FSTT4
5	4.0	8.0	300313	FSTT5
6	4.5	9.0	300314	FSTT6



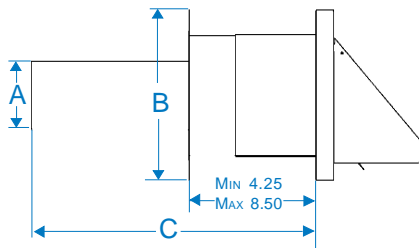
## FasNSeal® Termination Box 11



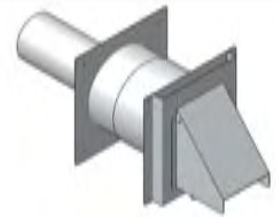
A Vent Dia.	B Eff. Lgth	C	D	Product Number	Part Number
3	2.3	2.0	5.0	300500	FSTB3
4	2.3	2.0	6.0	300501	FSTB4



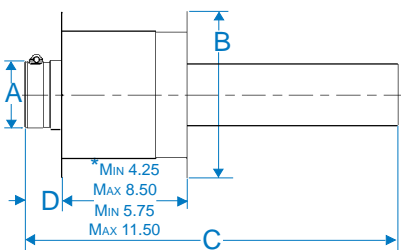
## FasNSeal® Wall Thimble with Volumetric Damper 11



A Vent Dia.	B	C	Product Number	Part Number
3	9.0	18.0	300810	FSWTT3
4	10.0	18.0	300811	FSWTT4



## FasNSeal® Wall Thimble with AVL 12



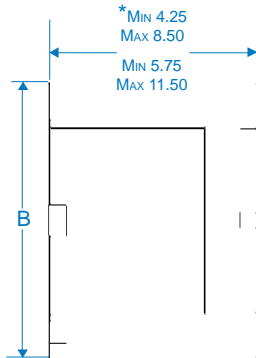
A Vent Dia.	B	C	D	Product Number	Part Number
3*	9.0	18.0	2.0	300280	FSWT3
4*	10.0	18.0	2.0	300281	FSWT4
5*	11.0	18.0	2.0	300282	FSWT5
6	12.0	18.0	2.0	300283	FSWT6
7	13.0	18.0	2.0	300284	FSWT7
8	14.0	18.0	2.0	300285	FSWT8
9	15.0	18.0	2.0	300286	FSWT9
10	16.0	18.0	2.0	300287	FSWT10
12	18.0	18.0	2.0	300289	FSWT12
14	20.0	18.0	2.0	300290	FSWT14
16	22.0	18.0	2.0	300291	FSWT16



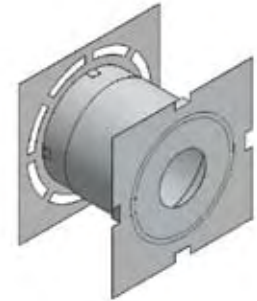
# FasNSeal® Direct Vent System

Ease of Installation is an Understatement

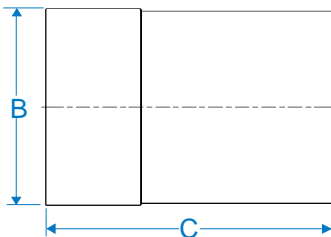
## 12 FasNSeal® Wall Pass Through



Vent Dia.	B	Product Number	Part Number
3*	9.0	300600	FSWPT3
4*	10.0	300601	FSWPT4
5*	11.0	300602	FSWPT5
6	12.0	300603	FSWPT6
7	13.0	300604	FSWPT7
8	14.0	300605	FSWPT8
9	15.0	300606	FSWPT9
10	16.0	300607	FSWPT10
12	18.0	300608	FSWPT12
14	20.0	300609	FSWPT14
16	22.0	300610	FSWPT16



## 13 FasNSeal® Wall Thimble Sleeve Extension

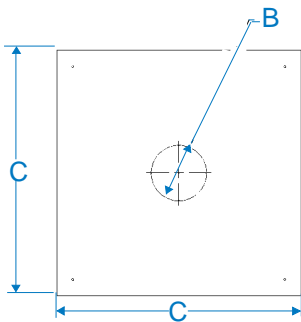


Vent Dia.	B	C	Product Number	Part Number
3	6.0	9.0	300839	FSWTE3
4	7.0	9.0	300840	FSWTE4
5	8.0	9.0	300841	FSWTE5
6	9.0	9.0	300842	FSWTE6
7	10.0	9.0	300843	FSWTE7
8	11.0	9.0	300844	FSWTE8
9	12.0	9.0	300845	FSWTE9
10	13.0	9.0	300846	FSWTE10
12	15.0	9.0	300847	FSWTE12
14	17.0	9.0	300848	FSWTE14
16	19.0	9.0	300849	FSWTE16



Vertical Venting

## 13 FasNSeal® Firestop/Flat Flashing



Vent Dia.	B	C	Product Number	Part Number
3	3.4	15.0	300295	FSFS3
4	4.4	15.0	300296	FSFS4
5	5.4	17.0	300297	FSFS5
6	6.4	17.0	300298	FSFS6
7	7.4	19.0	300299	FSFS7
8	8.4	19.0	300300	FSFS8
9	9.4	22.0	300301	FSFS9
10	10.4	22.0	300302	FSFS10
11	11.4	23.0	300480	FSFS11
12	12.4	24.0	300322	FSFS12
13	13.4	25.0	300481	FSFS13
14	14.4	26.0	300323	FSFS14
15	15.4	27.0	300482	FSFS15
16	16.4	28.0	300324	FSFS16
17	17.4	29.0	300483	FSFS17



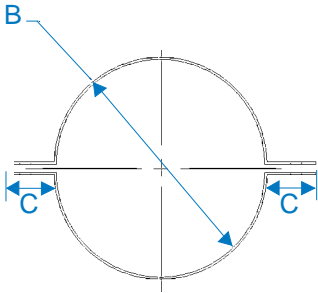
Vertical Venting

# FasNSeal® Direct Vent System

Ease of Installation is an Understatement

FasNSeal® Product Series

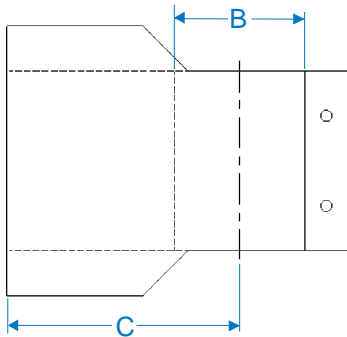
## FasNSeal® Support Clamp 13



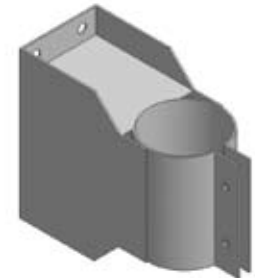
Vent Dia.	B	C	Product Number	Part Number
3	3.0	1.5	300360	FSCL3
4	4.0	1.5	300361	FSCL4
5	5.0	1.5	300362	FSCL5
6	6.0	1.5	300363	FSCL6
7	7.0	1.5	300364	FSCL7
8	8.0	1.5	300365	FSCL8
9	9.0	1.5	300366	FSCL9
10	10.0	1.5	300367	FSCL10
11	11.0	1.5	300484	FSCL11
12	12.0	1.5	300368	FSCL12
13	13.0	1.5	300485	FSCL13
14	14.0	1.5	300369	FSCL14
15	15.0	1.5	300486	FSCL15
16	16.0	1.5	300293	FSCL16
17	17.0	1.5	300487	FSCL17



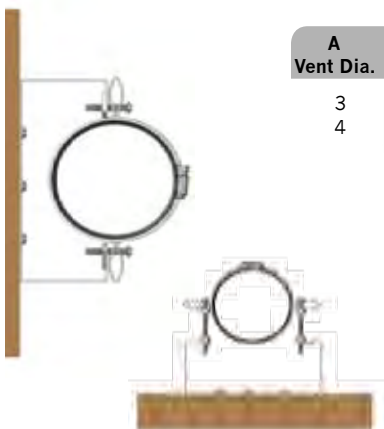
## FasNSeal® Wall Bracket 14



Vent Dia.	B	C	Product Number	Part Number
3	3.0	3.5	300430	FSWB3
4	4.0	4.0	300431	FSWB4
5	5.0	4.5	300432	FSWB5
6	6.0	5.0	300433	FSWB6
7	7.0	5.5	300434	FSWB7
8	8.0	6.0	300435	FSWB8
9	9.0	6.5	300436	FSWB9
10	10.0	7.0	300437	FSWB10
11	11.0	7.5	300492	FSWB11
12	12.0	8.0	300438	FSWB12
13	13.0	8.5	300493	FSWB13
14	14.0	9.0	300439	FSWB14
15	15.0	9.5	300494	FSWB15
16	16.0	10.0	300440	FSWB16
17	17.0	10.5	300495	FSWB17

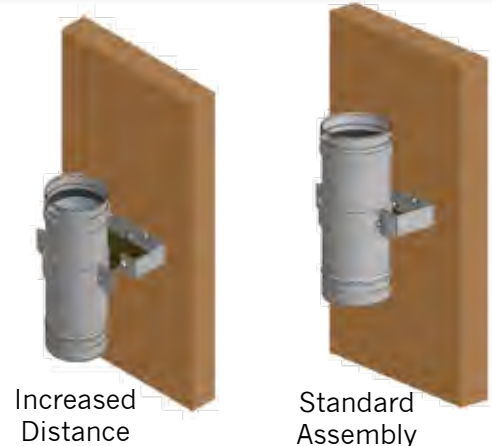


## FasNSeal® Adjustable Wall Bracket 15



A Vent Dia.	Product Number	Part Number
3	303801	FAAWB03
4	303802	FAAWB04

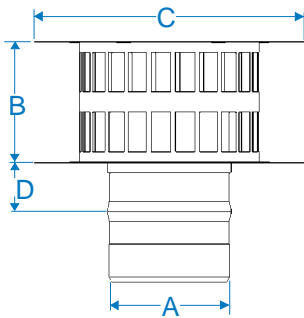
Greater Adjustability at a lower price. Use to maintain clearance to combustibles or in your horizontal runs to create the perfect pitch for condensate management.



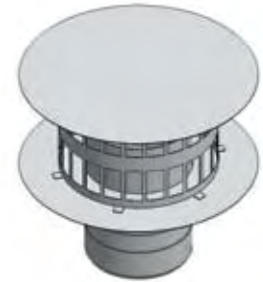
# FasNSeal® Direct Vent System

Ease of Installation is an Understatement

## 14 FasNSeal® Rain Cap



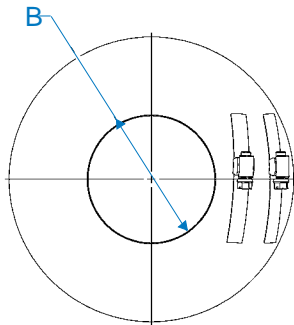
A Vent Dia.	B	C	D	Product Number	Part Number
3	3.5	6.8	1.0	300325	FSRC3
4	4.5	8.9	1.0	300326	FSRC4
5	5.8	11.3	1.0	300327	FSRC5
6	6.8	13.5	1.0	300328	FSRC6
7	7.8	15.8	1.0	300329	FSRC7
8	8.8	18.0	1.0	300330	FSRC8
9	10.0	20.3	1.0	300331	FSRC9
10	11.0	22.5	1.0	300332	FSRC10
12	13.0	27.0	1.0	300333	FSRC12
14	15.0	31.5	1.0	300334	FSRC14
16	17.0	36.0	1.0	300335	FSRC16



Due to extreme weather conditions such as the Gulf Coast, Florida & Southern Atlantic region, ProTech has developed a **Severe Weather Rain Cap**. Our innovative design protects against high winds and horizontal rains that can weaken the performance of your appliance. Please call one of our Customer Service Technicians or visit our website for more information.



## 14 FasNSeal® Storm Collar



Vent Dia.	B	Product Number	Part Number
3	3.0	300944	FSC3
4	4.0	300945	FSC4
5	5.0	300946	FSC5
6	6.0	300947	FSC6
7	7.0	300948	FSC7
8	8.0	300949	FSC8
9	9.0	300950	FSC9
10	10.0	300952	FSC10
11	11.0	300970	FSC11
12	12.0	300954	FSC12
13	13.0	300971	FSC13
14	14.0	300956	FSC14
15	15.0	300972	FSC15
16	16.0	300958	FSC16
17	17.0	300973	FSC17



## 13 FasNSeal® Termination Cone

A	Prod. Number	Part Number
4-5	303776	FSCN0504
16-14	300623	FSCN1614

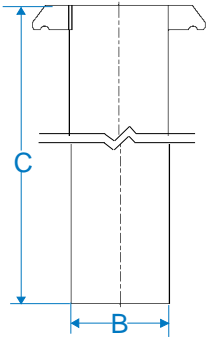
Many sizes/combinations are available. Pricing varies. Please call PTS Customer Service Technicians to find the Termination Cone that meets your venting needs. Also available in our Straight Termination form.

# FasNSeal® Direct Vent System

Ease of Installation is an Understatement

FasNSeal® Product Series

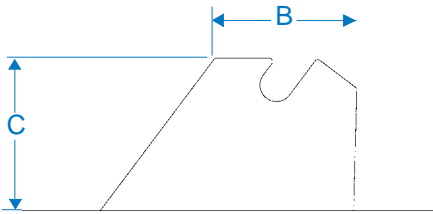
## FasNSeal® Roof Jack (Use with Variable Pitch Roof Flashing) 14



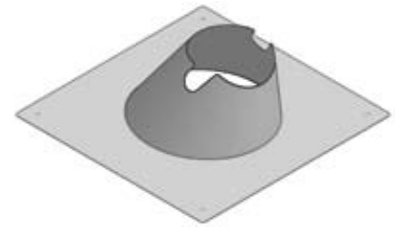
Vent Dia.	B	C	Product Number	Part Number
3	4.0	18.0	300911	FSVRJ3
4	5.0	18.0	300912	FSVRJ4
5	6.0	18.0	300913	FSVRJ5
6	7.0	18.0	300914	FSVRJ6
7	8.0	18.0	300915	FSVRJ7
8	9.0	18.0	300916	FSVRJ8
9	10.0	18.0	300917	FSVRJ9
10	11.0	18.0	300918	FSVRJ10
12	13.0	18.0	300919	FSVRJ12
14	15.0	18.0	300920	FSVRJ14
16	17.0	18.0	300921	FSVRJ16



## FasNSeal® Variable Pitch Roof Flashing 15



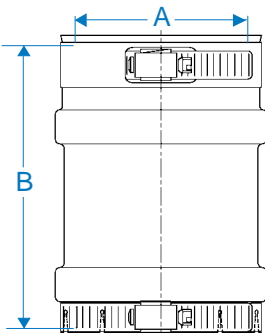
Vent Dia.	B	C	Product Number	Part Number
3	5.0	7.0	300922	FSVPF3
4	6.0	7.0	300923	FSVPF4
5	7.0	7.0	300924	FSVPF5
6	8.0	7.0	300925	FSVPF6
7	9.0	7.0	300926	FSVPF7
8	10.0	7.0	300927	FSVPF8
9	11.0	7.0	300928	FSVPF9
10	12.0	7.0	300929	FSVPF10
12	14.0	7.0	300930	FSVPF12
14	16.0	7.0	300931	FSVPF14
16	18.0	7.0	300932	FSVPF16



Accommodates Flat to 9/12 Pitch

## Adapters

## FasNSeal® Universal Appliance Adapter 4



A Vent Dia.	B	Product Number	Part Number
3	5.3	300824	FSAAU3
4	5.3	300825	FSAAU4
5	5.3	300826	FSAAU5
6	5.3	300827	FSAAU6
7	5.3	300828	FSAAU7
8	5.3	300829	FSAAU8
9	5.3	300830	FSAAU9
10	5.3	300831	FSAAU10
12	5.3	300832	FSAAU12
14	5.3	300833	FSAAU14
16	5.3	300834	FSAAU16

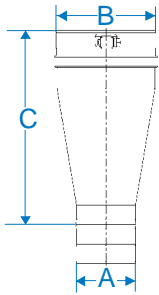




# FasNSeal® Direct Vent System

Ease of Installation is an Understatement

## 14 FasNSeal® Tapered Increaser



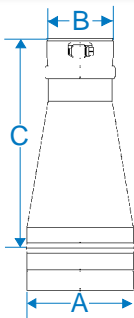
A Vent Dia.	B	C Eff. Lgth	Product Number	Part Number
3	4	6.9	300700	FS0304TI
4	5	6.9	300710	FS0405TI

\*Increasers can be ordered to adjoin any size combination of pieces.

Increasers are available in our new eccentric form. Eccentric Increasers are beneficial to maintain your center point throughout your runs and reduces the chance of creating condensate build-up points.



## 15 FasNSeal® Tapered Reducer

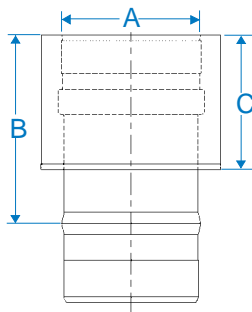


A Vent Dia.	B	C Eff. Lgth	Product Number	Part Number
4	3	6.9	300809	FS0403TR
5	4	6.9	300807	FS0504TR

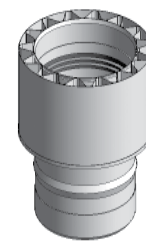
Reducers are available in our New Eccentric form. Eccentric Reducers are beneficial to maintain your center point throughout your runs and reduces the chance of creating condensate build-up points.



## 15 FasNSeal® Single to W2 Adapter



A Vent Dia.	B Eff. Lgth	C	Product Number	Part Number
3	4.0	3.0	100141	FSA-SWDW3
4	4.0	3.0	100142	FSA-SWDW4
5	4.0	3.0	100143	FSA-SWDW5
6	4.0	3.0	100144	FSA-SWDW6
7	4.0	3.0	100145	FSA-SWDW7
8	4.0	3.0	100146	FSA-SWDW8
9	4.0	3.0	100147	FSA-SWDW9
10	4.0	3.0	100148	FSA-SWDW10
12	4.0	3.0	100149	FSA-SWDW12
14	4.0	3.0	100150	FSA-SWDW14
16	4.0	3.0	100151	FSA-SWDW16



# FasNSeal® Direct Vent System

Ease of Installation is an Understatement

FasNSeal® Product Series

## Vent Kits

ProTech Systems provides multiple vent kit systems for venting in any situation. Whether you need a vertical or horizontal, a standard or custom we have the solution to your customers needs. Vent Kits ship in small compact boxes for the smallest footprint and easy transportation.

### Horizontal Termination

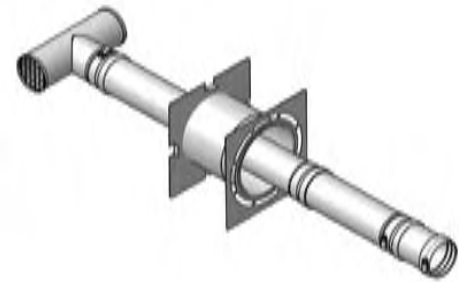
#### FasNSeal® Ceiling Mounted Heater Vent Kit 16

#### KIT COMPONENTS

##### For Ceiling Mounted Heaters

- Universal Appliance Adapter
  - 12" Vent Lengths
  - Wall Thimble with Adjustable Vent Length
  - Termination Tee
- \* 4" Kit Comes w/ UCD Appliance Adapter

Vent Dia.	Product Number	Part Number
3	300682	FSCMK3
4*	301011	FSCMK4



#### FasNSeal® Standard Wall Mount Vent Kit 16

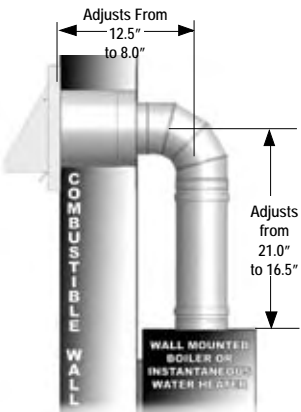
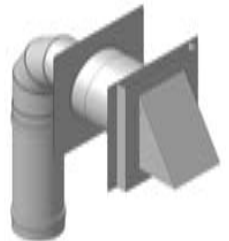
#### KIT COMPONENTS

- Wall Thimble with Termination
- Telescoping Elbow
- Appliance Adapter

Vent Dia.	Product Number	Part Number	Vent Dia.	Product Number	Part Number
4	300684	FSWMK4	3	300676	FSWMKB3

Compatible with most **A.O. Smith, Noritz, State, Takagi & Wai Wela** wall mounted water heaters

Compatible with most **Bosch, Wai Wela & Paloma** wall mounted water heaters

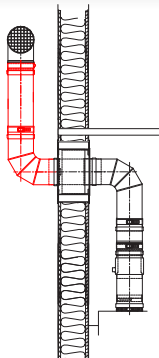


#### FasNSeal® Severe Weather Vent Kit 16

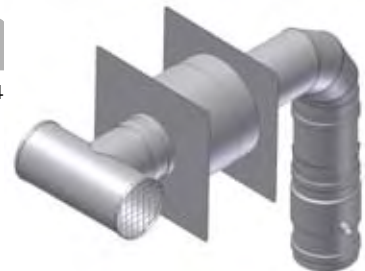
#### KIT COMPONENTS

- Wall Thimble with Termination
- Telescoping Elbow
- Appliance Adapter w/ Condensate Drain and Back Draft Preventer

Vent Dia.	Product Number	Part Number
4	303290	FSSWWMK4



Shown installed with optional Vent Length and 90° Elbow



# FasNSeal® Direct Vent System

Ease of Installation is an Understatement

## Vertical Termination

FasNSeal® Product Series

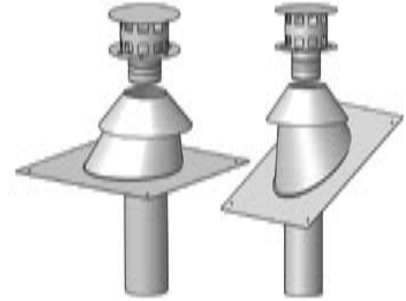
### 16 FasNSeal® Variable Pitch Flashing Kit

#### KIT COMPONENTS

- Storm Collar
- Rain Cap • Roof Jack
- Roof Flashing
- \* FSVPKA4 Includes UCD Appliance Adapter

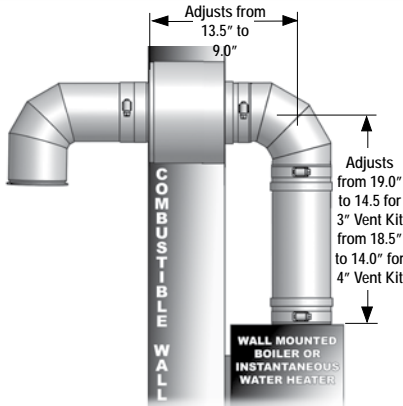
Vent Dia.	Product Number	Part Number
4*	303119	FSVPKA4

Vent Dia.	Product Number	Part Number
3	300661	FSVPK3
4	300662	FSVPK4
5	300663	FSVPK5
6	300664	FSVPK6
7	300665	FSVPK7
8	300666	FSVPK8
9	300667	FSVPK9
10	300668	FSVPK10
12	300669	FSVPK12
14	300670	FSVPK14
16	300671	FSVPK16



Accommodates Flat to 9/12 Pitch Roof

### 16 FasNSeal® 90° Bird Screen Wall Mount Kit



Vent Dia.	Product Number	Part Number
3	303300	FSWMKEB3
4	300864	FSWMKB4

#### KIT COMPONENTS

- 90° Bird Screen Wall Thimble
- Telescoping Elbow
- FSAAU Appliance Adapter



\* 3" Kit Requires an FSA-RI-4.2 Adapter

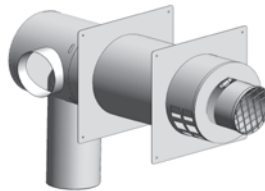
### 16 FasNSeal® Concentrics

FasNSeal® Universal Concentric Kit (Not Pictured)

Vent Dia.	Product Number	Part Number
4	303238	FSEDVWMT04U

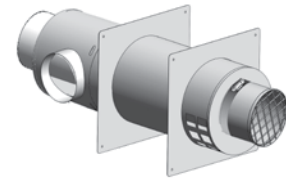
#### KIT COMPONENTS

- Left or Right Hand Extendable Termination with Bird Screen
- Aluminum Air Intake Tubing (Not Shown)



FasNSeal® Wall Mount Direct Vent Kits

Vent Dia.	Product Number	Part Number
4	303360	FSDVWMT0403RH
4	303352	FSDVWMT0403LH
4	303260	FSDVWMT04RH
4	303234	FSEDVWMT04LH



FasNSeal® Remote Standard Direct Vent Termination

Vent Dia.	Product Number	Part Number
4	303259	FSDVWT04
4	303350	FSDVWT0403