

FAN COILS

- 1-1/2 thru 5 tons
- Available for environmentally sound R-410A systems
- Factory installed TXV metering device
- Sweat connections
- Aluminum Tube, Aluminum Fin Evaporator Coil
- Primary and secondary drain fittings with brass inserts
- Multiple electrical entry locations
- Time delay relay (TDR)
- Field installed heater packages from 5 kW – 30 kW available separately
- HUD approved for manufactured housing
- 208/230-1-60 supply voltage
- Units tested and certified by manufacturer to achieve a 2% or less leakage rate at 1.0 inch water column
- 1 inch thick insulation with R value of 4.2
- Filter (washable) available as accessory
- ECM 5-speed motor
- Multiposition installation – upflow or horizontal left standard, horizontal right with minor modification (field convertible to downflow with available accessory kit)
- Low voltage circuit protective fuse (3amp) inline on wire harness
- No Heat (Plug) Kit factory installed

WARRANTY

- 1 year No Hassle Replacement™ limited warranty
- 5 year parts limited warranty
 - With timely registration, an additional 5 year parts limited warranty
- * For residential applications only. See warranty certificate for complete details and restrictions, including warranty coverage for other applications.



Use of the AHRI Certified TM Mark indicates a manufacturer's participation in the program. For verification of certification for individual products, go to www.ahridirectory.org.



| Model Number | Tons | Nom. CFM (L/s) | Dimensions H x W x D in. (mm) | Filter Size in. (mm) | Ship Wt lbs. (kg) |
|--------------|-------|----------------|--|--------------------------------|-------------------|
| FEM4X1800BL | 1-1/2 | 600 (283) | 42-11/16 x 14-5/16 x 22-1/16 (1084 x 364 x 560) | 13 x 21-1/2 (330 x 546) | 112 (51) |
| FEM4X2400CL | 2 | 800 (378) | 49-5/8 x 17-5/8 x 22-1/16 (1261 x 448 x 560) | 16-3/8 x 21-1/2 (416 x 546) | 122 (55) |
| FEM4X3000BL | 2-1/2 | 1000 (472) | 49-5/8 x 17-5/8 x 22-1/16 (1261 x 448 x 560) | 16-3/8 x 21-1/2 (416 x 546) | 122 (55) |
| FEM4X3600BL | 3 | 1200 (566) | 49-5/8 x 17-5/8 x 22-1/16 (1261 x 448 x 560) | 16-3/8 x 21-1/2 (416 x 546) | 122 (55) |
| FEM4X4200BL | 3-1/2 | 1400 (661) | 49-5/8 x 21-1/8 x 22-1/16 (1261 x 537 x 560) | 19-7/8 x 21-1/2 (505 x 546) | 157 (71) |
| FEM4X4800BL | 4 | 1600 (755) | 49-5/8 x 21-1/8 x 22-1/16 (1261 x 537 x 560) | 19-7/8 x 21-1/2 (505 x 546) | 157 (71) |
| FEM4X6000BL | 5 | 1750 (826) | 53-7/16 x 21-1/8 x 22-1/16 (1357 x 537 x 560) | 19-7/8 x 21-1/2 (505 x 546) | 175 (79) |

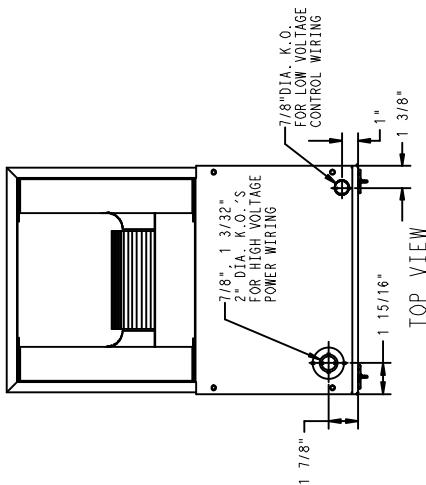
| FAN COIL MODEL NUMBER IDENTIFICATION GUIDE | | | | | | | | |
|---|-------------|----------|-------------------------|----------|--------------------------|-------------|----------|----------|
| DIGIT POSITION | 1 | 2 | 3 | 4 | 5 | 6,7,8,9 | 10 | 11 |
| | F | E | M | 4 | X | 1800 | B | L |
| F = Fan Coil | UNIT | | | | | | | |
| E = ECM | | | MOTOR TYPE | | | | | |
| S = Standard PSC | | | | | INSTALLATION TYPE | | | |
| M = Multiposition | | | | | | | | |
| U = Upflow | | | | | | | | |
| 4 = Environmentally Sound R-410A | | | REFRIGERANT | | | | | |
| X = TXV | | | METERING DEVICE | | | | | |
| 1800 = 18,000 BTUH = 1-1/2 tons | | | | | | | | |
| 2400 = 24,000 BTUH = 2 tons | | | | | | | | |
| 3000 = 30,000 BTUH = 2-1/2 tons | | | | | | | | |
| 3500 = 36,000 BTUH = 3 tons | | | | | | | | |
| 3600 = 36,000 BTUH = 3 tons | | | | | | | | |
| 4200 = 42,000 BTUH = 3-1/2 tons | | | | | | | | |
| 4800 = 48,000 BTUH = 4 tons | | | | | | | | |
| 6000 = 60,000 BTUH = 5 tons | | | NOMINAL CAPACITY | | | | | |
| B, C | | | SALES CODE | | | | | |
| L = Aluminum Tube, Aluminum Fin Evaporator Coil | | | COIL TYPE | | | | | |

| ACCESSORIES PART NUMBER IDENTIFICATION GUIDE | | | | | |
|--|----|----|----|-----|---|
| | EB | AC | 01 | NCB | A |
| EB = Evaporator Blower | | | | | |
| AC = Accessory | | | | | |
| 01 = Product Identifier Number | | | | | |
| NCB = Non-Combustible Base Kit | | | | | |
| DFK = Down Flow Kit | | | | | |
| PLG = Power Plug (no heat kit) | | | | | |
| SPK = Single Point Wiring Kit | | | | | |
| FKS = Filter Kit Small | | | | | |
| FKM = Filter Kit Medium | | | | | |
| FKL = Filter Kit Large | | | | | |
| FKX = Filter Kit Extra Large | | | | | |
| CTK = Condensate Trap Kit (PVC pipe) | | | | | |
| Sales Code | | | | | |

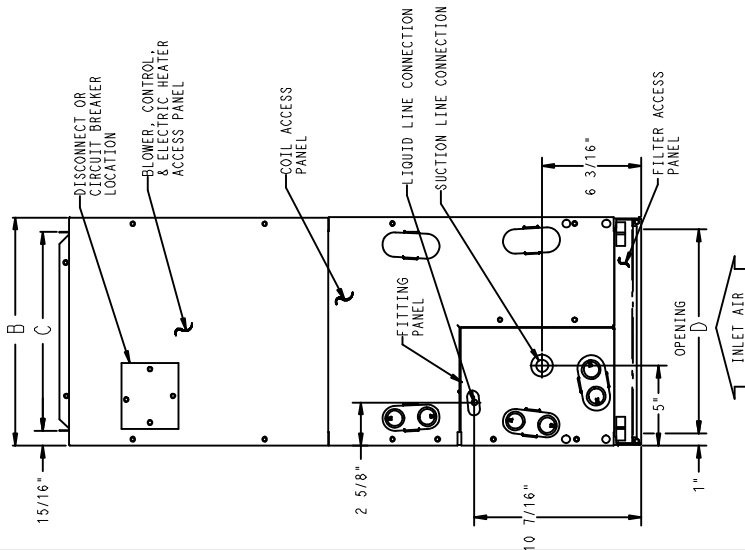
| ELECTRIC HEATER MODEL NUMBER IDENTIFICATION GUIDE | | | | | | |
|--|-----|----|---|---|---|---|
| | EHK | 05 | A | K | N | 1 |
| EHK = Electric Heater Kit | | | | | | |
| 05 = 5 kW | | | | | | |
| 07 = 7 kW | | | | | | |
| 09 = 9 kW | | | | | | |
| 10 = 10 kW | | | | | | |
| 15 = 15 kW | | | | | | |
| 18 = 18 kW | | | | | | |
| 20 = 20 kW | | | | | | |
| 25 = 25 kW | | | | | | |
| 30 = 30 kW | | | | | | |
| Sales Code | | | | | | |
| K = 208 / 230, single-phase | | | | | | |
| H = 208 / 230, 3-phase | | | | | | |
| KC = 208 / 230, supplied as single phase, field convertible to 3-phase | | | | | | |
| HC = 208 / 230 supplied as 3-phase, field convertible to single phase | | | | | | |
| Product Identifier | | | | | | |
| Engineering Code | | | | | | |

UNIT CONNECTION SIZES:

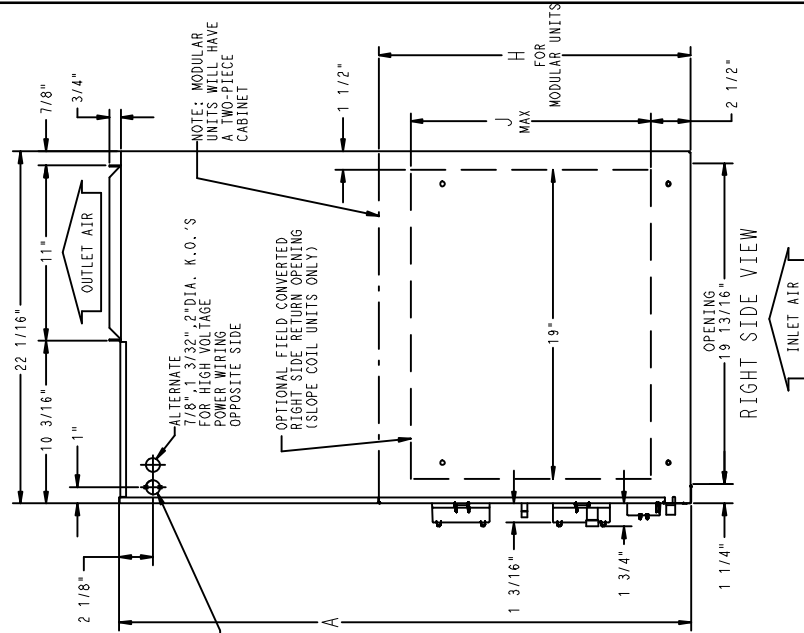
SUCTION:
 FEM4X-B: 18 & 24 — 5/8" I.D. SWEAT
 30 & 36 — 3/4" I.D. SWEAT
 42, 48 & 60 — 7/8" I.D. SWEAT
 LIQUID: 3/8" I.D. SWEAT
 CONDENSATE: 3/4" FPT



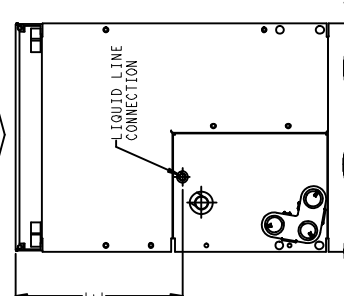
NOTE:
 1. SERIES DESIGNATION IS THE 11TH POSITION OF UNIT PRODUCT NUMBER
 2. ALL DIMENSIONS ARE IN "INCHES" UNLESS NOTED.



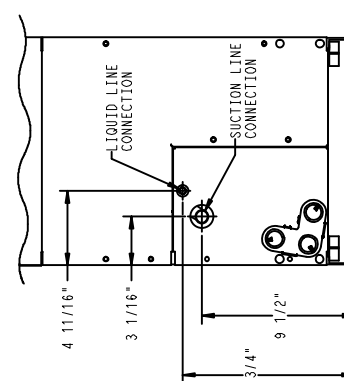
FRONT VIEW
 SHOWN WITH "A" COIL DETAILS CONNECTION LOCATIONS FOR UPFLOW OR HORIZ. APPLICATIONS



RIGHT SIDE VIEW



ACCESS PANEL CONFIG. FOR SLOPE COILS DOWNFLOW OR HORIZ. RIGHT APPLICATIONS AND "A" COILS DOWNFLOW APPLICATIONS



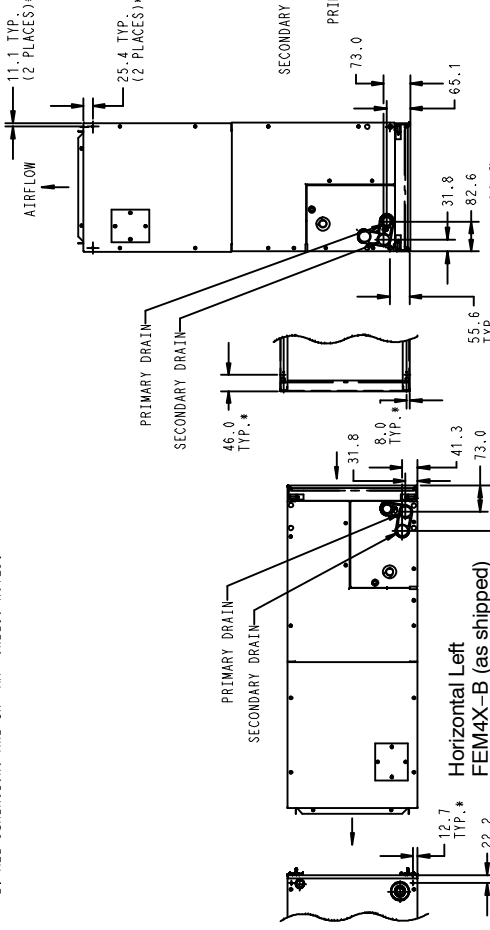
SLOPE COIL DETAILS CONNECTION LOCATIONS SHOWN FOR UPFLOW OR HORIZ. LEFT APPLICATIONS

Dimensions English (Inches)

SD4895-4_A

SLOPE COIL

- NOTES:
 1. CONDENSATE PAN DRAIN CAPS NOT SHOWN FOR CLARITY.
 2. ALL DIMENSIONS ARE IN "MM" UNLESS NOTED.



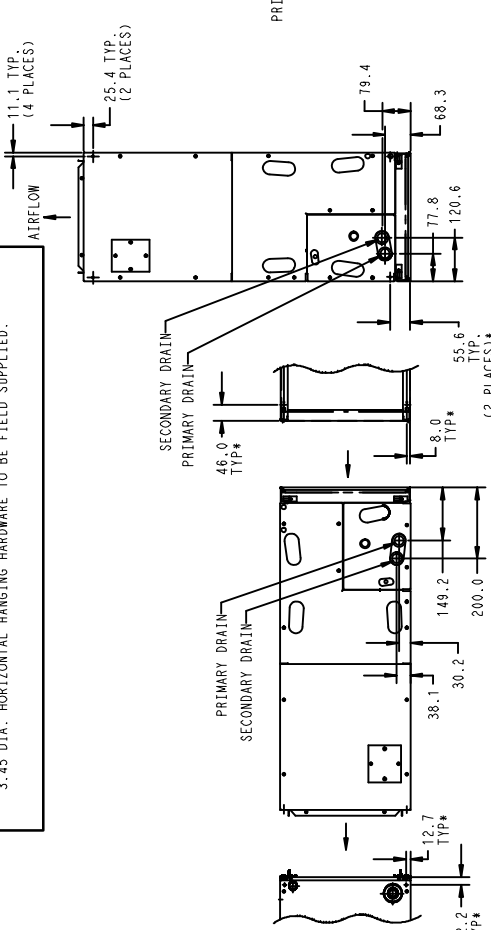
* HORIZONTAL MOUNT LOCATIONS - DIMPLES PROVIDED IN TOP PANEL, AND BACK OF CABINET. IN CABINET BOTTOM, HOLES PROVIDED 3.45 DIA. HORIZONTAL HANGING HARDWARE TO BE FIELD SUPPLIED.

Horizontal Left FEM4X-B (as shipped)

Downflow (field converted with accessory kits)

Upflow (as shipped)

Horizontal Left FEM4X-B (as shipped)



Horizontal Right FEM4X-B (field converted with accessory kits)

Downflow (field converted with accessory kits)

Upflow (as shipped)

Horizontal Left FEM4X-B (as shipped)

A-COIL
 SD4895-4_A

Dimensions MM (SI Metric)

| DIMENSIONAL DATA (refer to drawings) | | | | | | | | | | | | | | |
|--------------------------------------|-------------|-----------------------------|---------|---------|---------|----------|---------|----------|---------|----|-------|--------|-----------|---------------|
| Unit Size | Size (tons) | Dimensions inches (English) | | | | | | | | | | | Coil Type | Ship. WT lbs. |
| | | A | B | C | D | E | F | G | H | J | Suct. | Liquid | | |
| 1800B | 1-1/2 | 42-11/16 | 14-5/16 | 12-7/16 | 12-5/16 | 10-7/16 | 18-1/8 | 18-5/8 | — | 12 | 5/8 | 3/8 | Slope | 112 |
| 2400C | 2 | 49-5/8 | 17-5/8 | 15-3/4 | 15-5/8 | 15-3/8 | 23-1/8 | 23-5/8 | — | 17 | 3/4 | 3/8 | Slope | 122 |
| 3000B | 2-1/2 | 49-5/8 | 17-5/8 | 15-3/4 | 15-5/8 | 15-3/8 | 23-1/8 | 23-5/8 | — | 17 | 3/4 | 3/8 | Slope | 122 |
| 3600B | 3 | 49-5/8 | 17-5/8 | 15-3/4 | 15-5/8 | 15-3/8 | 23-1/8 | 23-5/8 | — | 17 | 3/4 | 3/8 | Slope | 122 |
| 4200B | 3-1/2 | 49-5/8 | 21-1/8 | 19-1/4 | 19-1/8 | 15-11/16 | 23-7/16 | 23-1/8 | — | — | 7/8 | 3/8 | "A" | 157 |
| 4800B | 4 | 49-5/8 | 21-1/8 | 19-1/4 | 19-1/8 | 15-11/16 | 23-7/16 | 23-1/8 | — | — | 7/8 | 3/8 | "A" | 157 |
| 6000B | 5 | 53-7/16 | 21-1/8 | 19-1/4 | 19-1/8 | 19-1/2 | 27-1/4 | 26-15/16 | 28-5/16 | — | 7/8 | 3/8 | "A" | 175 |

| Unit Size | Size (tons) | Dimensions mm (SI Metric) | | | | | | | | | | | Coil Type | Ship. WT kg |
|-----------|-------------|---------------------------|-----|-----|-----|-----|-----|-----|-----|-----|-------|--------|-----------|-------------|
| | | A | B | C | D | E | F | G | H | J | Suct. | Liquid | | |
| 1800B | 1-1/2 | 1084 | 364 | 316 | 313 | 265 | 460 | 473 | — | 305 | 16 | 10 | Slope | 51 |
| 2400C | 2 | 1261 | 448 | 400 | 397 | 391 | 587 | 600 | — | 432 | 19 | 10 | Slope | 55 |
| 3000B | 2-1/2 | 1261 | 448 | 400 | 397 | 391 | 587 | 600 | — | 432 | 19 | 10 | Slope | 55 |
| 3600B | 3 | 1261 | 448 | 400 | 397 | 391 | 587 | 600 | — | 432 | 19 | 10 | Slope | 55 |
| 4200B | 3-1/2 | 1261 | 537 | 489 | 486 | 399 | 595 | 587 | — | — | 22 | 10 | "A" | 71 |
| 4800B | 4 | 1261 | 537 | 489 | 486 | 399 | 595 | 587 | — | — | 22 | 10 | "A" | 71 |
| 6000B | 5 | 1357 | 537 | 489 | 486 | 495 | 692 | 684 | 719 | — | 22 | 10 | "A" | 79 |

| REQUIRED CLEARANCES - ALL MODELS inches (mm) | | |
|--|--|--------|
| No Heaters | All Sides | 0 |
| | From Supply Duct | 0 |
| With Heaters | All Sides | 0 |
| | From First 3 feet of Supply Duct to Combustibles | 1 (25) |
| | From Supply Duct to Combustibles after 3 feet | 0 |

| PHYSICAL DATA | | | | | | | |
|---|-------------------------|-----------------------------|-------------|-------------|-----------------------------|-------------|-------------|
| | Size | | | | | | |
| | 1800B | 2400C | 3000B | 3600B | 4200B | 4800B | 6000B |
| Blower Data | | | | | | | |
| CFM (L/s) nominal | 600 (283) | 800 (378) | 1000 (472) | 1200 (566) | 1400 (661) | 1600 (755) | 1750 (826) |
| Motor Type | ECM 5-speed | | | | | | |
| HP | 1/3 | 1/3 | 1/3 | 1/2 | 1/2 | 3/4 | 3/4 |
| Filter Data (washable, available as accessory) | | | | | | | |
| | 13 x 21-1/2 (330 x 546) | 16-3/8 x 21-1/2 (416 x 546) | | | 19-7/8 x 21-1/2 (505 x 546) | | |
| Coil Data - Face Area ft² (m²) | | | | | | | |
| | 2.23 (0.21) | 2.97 (0.28) | 2.97 (0.28) | 2.97 (0.28) | 4.45 (0.41) | 4.45 (0.41) | 5.93 (0.55) |
| Refrigerant Line Connections (sweat) | | | | | | | |
| Liquid inch (mm) | 3/8 (10) | | | | | | |
| Suction inch (mm) | 5/8 (16) | 5/8 (16) | 3/4 (19) | 3/4 (19) | 7/8 (22) | 7/8 (22) | 7/8 (22) |

| ELECTRICAL DATA, FAN COIL ONLY WITHOUT ELECTRIC HEAT | | | |
|--|-------------------------------|--------------------------------|---|
| Unit Size | 208/230V, single phase, 60 Hz | | |
| | Motor Full Load Amps (FLA) | Minimum Circuit Ampacity (MCA) | Maximum Fuse/Ckt Bkr Amps (Max OverCurrent Protection - MOCP) |
| 1800B | 2.8 | 3.5 | 15 |
| 2400C | 2.8 | 3.5 | 15 |
| 3000B | 2.8 | 3.5 | 15 |
| 3600B | 4.1 | 5.1 | 15 |
| 4200B | 4.1 | 5.1 | 15 |
| 4800B | 6.0 | 7.5 | 15 |
| 6000B | 6.0 | 7.5 | 15 |

AIRFLOW PERFORMANCE – CFM at a given Speed and Static reading

| Model | Blower Speed | Total Static (inches water column) | | | | | |
|------------|--------------|------------------------------------|------|------|------|------|------|
| | | 0.10 | 0.20 | 0.30 | 0.40 | 0.50 | 0.60 |
| FEM4X1800B | Tap 5 | 767 | 739 | 702 | 669 | 620 | 565 |
| | Tap 4 | 614 | 569 | 534 | 486 | 436 | 398 |
| | Tap 3 | 701 | 660 | 616 | 581 | 537 | 499 |
| | Tap 2 | 614 | 569 | 534 | 486 | 436 | 398 |
| | Tap 1 | 410 | 350 | 304 | 261 | 228 | 203 |
| FEM4X2400C | Tap 5 | 969 | 936 | 892 | 835 | 763 | 676 |
| | Tap 4 | 826 | 795 | 766 | 743 | 706 | 660 |
| | Tap 3 | 826 | 795 | 766 | 743 | 706 | 660 |
| | Tap 2 | 701 | 660 | 616 | 581 | 537 | 499 |
| | Tap 1 | 617 | 592 | 552 | 507 | 472 | 420 |
| FEM4X3000B | Tap 5 | 1108 | 1090 | 1065 | 1034 | 1009 | 974 |
| | Tap 4 | 1026 | 1000 | 969 | 938 | 899 | 865 |
| | Tap 3 | 1026 | 1000 | 969 | 938 | 899 | 865 |
| | Tap 2 | 909 | 873 | 842 | 799 | 762 | 724 |
| | Tap 1 | 825 | 795 | 757 | 722 | 674 | 634 |
| FEM4X3600B | Tap 5 | 1301 | 1276 | 1245 | 1218 | 1176 | 1121 |
| | Tap 4 | 1227 | 1191 | 1169 | 1143 | 1105 | 1074 |
| | Tap 3 | 1227 | 1191 | 1169 | 1143 | 1105 | 1074 |
| | Tap 2 | 1087 | 1062 | 1030 | 1001 | 966 | 930 |
| | Tap 1 | 1026 | 1000 | 969 | 938 | 899 | 865 |
| FEM4X4200B | Tap 5 | 1560 | 1544 | 1507 | 1464 | 1424 | 1358 |
| | Tap 4 | 1419 | 1397 | 1358 | 1320 | 1279 | 1239 |
| | Tap 3 | 1419 | 1397 | 1358 | 1320 | 1279 | 1239 |
| | Tap 2 | 1249 | 1220 | 1184 | 1142 | 1093 | 1052 |
| | Tap 1 | 1242 | 1205 | 1158 | 1110 | 1069 | 1026 |
| FEM4X4800B | Tap 5 | 1743 | 1712 | 1679 | 1642 | 1610 | 1574 |
| | Tap 4 | 1669 | 1634 | 1599 | 1564 | 1531 | 1499 |
| | Tap 3 | 1669 | 1634 | 1599 | 1564 | 1531 | 1499 |
| | Tap 2 | 1452 | 1413 | 1377 | 1339 | 1308 | 1271 |
| | Tap 1 | 1300 | 1256 | 1221 | 1182 | 1142 | 1101 |
| FEM4X6000B | Tap 5 | 1897 | 1867 | 1836 | 1808 | 1774 | 1736 |
| | Tap 4 | 1817 | 1785 | 1757 | 1724 | 1693 | 1655 |
| | Tap 3 | 1817 | 1785 | 1757 | 1724 | 1693 | 1655 |
| | Tap 2 | 1657 | 1621 | 1589 | 1557 | 1518 | 1474 |
| | Tap 1 | 1443 | 1412 | 1377 | 1332 | 1286 | 1243 |

■ – Airflow outside 450 cfm/ton.

NOTES:

- Airflow based upon dry coil at 230v with factory-approved filter and electric heater (2 element heater sizes 1800 through 3600, 3 element heater sizes 4200 through 6000). Airflow at 208 volts is approximately the same as 230 volts because the ECM motor is a constant torque motor. The torque doesn't drop off at the speeds the motor operates.
- To avoid potential for condensate blowing out of drain pan prior to making drain trap:
Return static pressure must be less than 0.40 in. wc.
Horizontal applications of 4200 – 6000 sizes must have supply static greater than 0.20 in. wc.
- Airflow above 400 cfm/ton on 4800–6000 size could result in condensate blowing off coil or splashing out of drain pan.

STATIC PRESSURE CORRECTION FROM DRY TO WET COIL (inches of water column)

| Unit Size | CFM | | | | | | | | | | | | | | | |
|-----------|-------|-------|-------|-------|-------|-------|-------|-------|-------|-------|-------|-------|-------|-------|-------|-------|
| | 500 | 600 | 700 | 800 | 900 | 1000 | 1100 | 1200 | 1300 | 1400 | 1500 | 1600 | 1700 | 1800 | 1900 | 2000 |
| 1800B | 0.034 | 0.049 | 0.063 | — | — | — | — | — | — | — | — | — | — | — | — | — |
| 2400C | — | 0.049 | 0.063 | 0.076 | 0.089 | — | — | — | — | — | — | — | — | — | — | — |
| 3000B | — | — | — | 0.049 | 0.059 | 0.070 | 0.080 | — | — | — | — | — | — | — | — | — |
| 3600B | — | — | — | — | — | 0.070 | 0.080 | 0.090 | 0.099 | — | — | — | — | — | — | — |
| 4200B | — | — | — | — | — | — | — | 0.049 | 0.056 | 0.063 | 0.070 | — | — | — | — | — |
| 4800B | — | — | — | — | — | — | — | — | — | 0.063 | 0.070 | 0.076 | 0.083 | 0.090 | — | — |
| 6000B | — | — | — | — | — | — | — | — | — | — | — | 0.049 | 0.054 | 0.059 | 0.065 | 0.070 |

| MINIMUM CFM WHEN USING ELECTRIC HEAT | | | | | | | | | | |
|--------------------------------------|-----------|------|------|------|------|------|------|------|------|------|
| Unit Size | HEATER kW | | | | | | | | | |
| | 3 | 5 | 8 | 9 | 10 | 15 | 18 | 20 | 24 | 30 |
| 1800B | 525 | 525 | 525 | — | 600 | — | — | — | — | — |
| 2400C | 700 | 700 | 700 | — | 700 | 775 | — | — | — | — |
| 3000B | — | 875 | 875 | — | 875 | 875 | — | 1060 | — | — |
| 3600B | — | 1050 | 970 | 970 | 970 | 920 | — | 1040 | — | — |
| 4200B | — | — | 1225 | 1225 | 1225 | 1225 | 1225 | 1225 | — | — |
| 4800B | — | — | 1400 | 1400 | 1400 | 1400 | 1400 | 1400 | 1400 | 1400 |
| 6000B | — | — | 1750 | 1750 | 1750 | 1750 | 1750 | 1750 | 1750 | 1750 |

Note: Speed Tap 4 (white wire) is used for electric heat only. White wire must remain on tap 4.

| STATIC PRESSURE CORRECTION FOR ELECTRIC HEATERS (inches of water column) | | | | | | |
|---|-----------|--------|---------|---------|-------|---------------|
| Airflow performance chart was developed using fan coils with 10 kW electric heater (2 elements) in the 1800 – 3600 model sizes, and 15 kW electric heaters (3 elements) in the 4200 – 4800 model sizes. | | | | | | |
| When using a different number of heater elements, adjust the static pressure numbers by adding or subtracting the values in this table (for a given CFM, more electric heater elements create higher static pressure drop). | | | | | | |
| Unit Size | Heater kW | | | | | |
| | No Heater | 3 or 5 | 8 or 10 | 9 or 15 | 20 | 18, 24, or 30 |
| | 0 | 1 | 2 | 3 | 4 | 6 |
| 1800B | +0.02 | +0.01 | 0 | -0.02 | -0.04 | - |
| 2400C | +0.02 | +0.01 | 0 | -0.02 | -0.04 | - |
| 3000B | +0.02 | +0.01 | 0 | -0.02 | -0.04 | - |
| 3600B | +0.02 | +0.01 | 0 | -0.02 | -0.04 | - |
| 4200B | +0.04 | - | +0.02 | 0 | -0.02 | -0.10 |
| 4800B | +0.04 | - | +0.02 | 0 | -0.02 | -0.10 |
| 6000B | +0.04 | - | +0.02 | 0 | -0.02 | -0.10 |

ELECTRIC HEATER ELECTRICAL DATA

| Heater Model | Heater kW | | PHASE | INTERNAL CIRCUIT PROTECTION | HEATER AMPS 208/230V | | | Min Ampacity ☆ 208/230V | | | Min Wire Size (AWG) 208/230V † | | | Min Gnd Wire Size 208/230V | | | Max Fuse/Ckt Bkr Amps 208/230V | | | Max Wire Length 208/230V (FT) †† | | |
|--------------|-----------|------|-------|-----------------------------|----------------------|--------------|-------------|-------------------------|--------------|-------|--------------------------------|--------------|-------|----------------------------|--------------|-------|--------------------------------|--------------|-------|----------------------------------|--------------|-------|
| | 230v | 208v | | | Single Circuit | Dual Circuit | | Single Circuit | Dual Circuit | | Single Circuit | Dual Circuit | | Single Circuit | Dual Circuit | | Single Circuit | Dual Circuit | | Single Circuit | Dual Circuit | |
| | | | | | | L1,L2 | L3,L4 | | L1,L2 | L3,L4 | | L1,L2 | L3,L4 | | L1,L2 | L3,L4 | | L1,L2 | L3,L4 | | L1,L2 | L3,L4 |
| EHK05AKN* | 5 | 3.8 | 1 | None | 18.1/20.0 | — | 25.0/28.4 | 10/10 | — | 10/10 | — | — | 10/10 | — | 30/30 | — | 66/66 | — | — | — | — | — |
| EHK05AKN** | 5 | 3.8 | 1 | None | 18.1/20.0 | — | 31.2/33.5 | 8/8 | — | 10/10 | — | — | 10/10 | — | 35/35 | — | 85/88 | — | — | — | — | — |
| EHK05AKB* | 5 | 3.8 | 1 | Ckt Bkr | 18.1/20.0 | — | 26.0/28.4 | 10/10 | — | 10/10 | — | — | 10/10 | — | 30/30 | — | 66/66 | — | — | — | — | — |
| EHK05AKB** | 5 | 3.8 | 1 | Ckt Bkr | 18.1/20.0 | — | 31.2/33.5 | 8/8 | — | 10/10 | — | — | 10/10 | — | 35/35 | — | 85/88 | — | — | — | — | — |
| EHK07AKN | 8 | 6.0 | 1 | None | 28.9/32.0 | — | 44.7/48.5 | 8/8 | — | 10/10 | — | — | 10/10 | — | 45/50 | — | 59/60 | — | — | — | — | — |
| EHK07AKB | 8 | 6.0 | 1 | Ckt Bkr | 28.9/32.0 | — | 44.7/48.5 | 8/8 | — | 10/10 | — | — | 10/10 | — | 45/50 | — | 59/60 | — | — | — | — | — |
| EHK09AKCNT | 9 | 6.8 | 1 | None | 32.8/36.0 | — | 49.5/53.5 | 8/6 | — | 10/10 | — | — | 10/10 | — | 50/60 | — | 54/87 | — | — | — | — | — |
| EHK09AKB | 9 | 6.8 | 3 | None | 18.8/20.8 | — | 32.0/34.5 | 8/8 | — | 10/10 | — | — | 10/10 | — | 35/35 | — | 83/85 | — | — | — | — | — |
| EHK10AKN | 10 | 7.5 | 1 | None | 36.2/40.0 | — | 53.8/58.5 | 6/6 | — | 10/10 | — | — | 10/10 | — | 60/60 | — | 79/80 | — | — | — | — | — |
| EHK10AKB | 10 | 7.5 | 1 | Ckt Bkr | 36.2/40.0 | — | 53.8/58.5 | 6/6 | — | 10/10 | — | — | 10/10 | — | 60/60 | — | 79/80 | — | — | — | — | — |
| EHK15AKF | 15 | 11.3 | 1 | Fuse | 54.2/59.9 | 36.2/40.0 | 18.1/20.0 | 76.3/83.4 | 4/4 | 6/6 | 10/10 | 10/10 | 10/10 | 10/10 | 80/90 | 60/60 | 25/25 | 88/89 | 78/80 | 75/76 | 75/76 | |
| EHK15AKB | 15 | 11.3 | 1 | Ckt Bkr | — | 36.2/40.0 | 18.1/20.0 | — | — | — | 6/6 | 10/10 | 10/10 | 10/10 | — | 60/60 | 25/25 | — | 78/80 | 75/76 | 75/76 | |
| EHK15AHN | 15 | 11.3 | 3 | None | 31.3/34.6 | — | 47.7/51.8 | 8/6 | — | 10/10 | — | — | 10/10 | — | 50/60 | — | 56/90 | — | — | — | — | — |
| EHK18AHN | 18 | 13.5 | 3 | None | 37.6/41.5 | — | 55.5/60.4 | 6/6 | — | 10/8 | — | — | 10/8 | — | 60/70 | — | 76/77 | — | — | — | — | — |
| EHK20AKF | 20 | 15.0 | 1 | Fuse | 72.3/79.9 | 36.2/40.0 | 36.2/40.0 | 98.9/108.4 | 3/2 | 6/6 | 8/8 | 8/8 | 10/10 | 10/10 | 100/110 | 60/60 | 50/50 | 85/109 | 78/80 | 59/59 | 59/59 | |
| EHK20AKB | 20 | 15.0 | 1 | Ckt Bkr | — | 36.2/40.0 | 36.2/40.0 | — | — | — | 6/6 | 8/8 | 10/10 | 10/10 | — | 60/60 | 50/50 | — | 78/80 | 59/59 | 59/59 | |
| EHK25AHCF† | 24 | 18.0 | 3 | Fuse | 50.1/55.4 | — | 71.2/77.8 | 4/4 | — | 4/4 | — | — | 8/8 | — | 80/80 | — | 94/95 | — | — | — | — | — |
| EHK25AHCF† | 24 | 18.0 | 1 | Fuse | 86.7/95.5 | — | 116.9/127.9 | 1/1 | — | 1/1 | — | — | 6/6 | — | 125/150 | — | 115/116 | — | — | — | — | — |
| EHK30AHCF† | 30 | 22.5 | 3 | Fuse | 62.6/69.2 | — | — | 86.8/95.0 | 3/3 | — | — | — | 8/8 | — | 90/100 | — | 97/98 | — | — | — | — | — |
| EHK30AHCF† | 30 | 22.5 | 1 | Fuse | 109.0/120.0 | — | — | 144.8/158.5 | 0/00 | — | — | — | 6/6 | — | 150/175 | — | 117/150 | — | — | — | — | — |

FIELD MULTIPOINT WIRING OR 24 AND 30 KW SINGLE PHASE

| Heater Model | Heater kW | | Heater Amps 208/230V | | | Minimum Wire Size (AWG) 208/230V † | | | Minimum Circuit Ampacity 208/230V ☆ | | | Min Gnd Wire Size 208/230V | | | Max Fuse/Ckt Bkr Amps 208/230V | | | Max Wire Length 208/230V (FT) †† | | | |
|--------------|-----------|------|----------------------|-----------|-----------|------------------------------------|-----------|-----------|-------------------------------------|-----------|-----------|----------------------------|--------|--------|--------------------------------|--------|--------|----------------------------------|--------|--------|--------|
| | 230V | 208V | P | H | A | L1, L2 | L3, L4 | L5, L6 | L1, L2 | L3, L4 | L5, L6 | L1, L2 | L3, L4 | L5, L6 | L1, L2 | L3, L4 | L5, L6 | L1, L2 | L3, L4 | L5, L6 | |
| | | | | | | | | | | | | | | | | | | | | | L1, L2 |
| EHK25AHCF† | 24 | 18.0 | 1 | 28.9/32.0 | 28.9/32.0 | 28.9/32.0 | 28.9/32.0 | 44.7/48.5 | 36.2/40.0 | 36.2/40.0 | 36.2/40.0 | 8/8 | 8/8 | 8/8 | 45/50 | 40/40 | 40/40 | 59/60 | 73/73 | 73/73 | 59/59 |
| EHK30AHCF† | 30 | 22.5 | 1 | 36.2/40.0 | 36.2/40.0 | 36.2/40.0 | 36.2/40.0 | 53.8/58.5 | 45.3/50.0 | 45.3/50.0 | 45.3/50.0 | 6/6 | 6/6 | 6/6 | 60/60 | 50/50 | 50/50 | 78/80 | 59/59 | 59/59 | 59/59 |

Notes:

- 1 Copper wire must be used. If other than uncoated (non-plated), 75° C ambient, copper wire (solid wire for 10 AWG and smaller, stranded wire for larger than 10 AWG) is used, consult applicable tables of the National Electric Code (ANSI/NFPA 70)
- * When used with Fan Coil model sizes 2400, 3600
- ** When used with Fan Coil model sizes 4200, 4800, 6000
- † Includes blower motor amps of largest Fan Coil used with heater
- † Supplied as single phase, field convertible to 3-phase
- † Supplied as 3-phase, field convertible to single phase, single or multiple supply circuits
- †† Length shown is as measured one way along wire path between unit and service panel for a voltage drop not to exceed 2%

| ACCESSORIES | | |
|------------------------------------|--|--|
| Part Number | Description | Use with Model Sizes |
| EBAC01DSC | Disconnect Kit | Use with All single phase Heaters 5 kW thru 10 kW |
| EBAC01NCB | Downflow Base Kit | 1800B |
| EBAC02NCB | | 2400C, 3000B, 3600B |
| EBAC03NCB | | 4200B, 4800B, 6000B |
| EBAC01DFS | Bracket, Downflow Conversion Kit – Slope Coil | 1800B, 2400C, 3000B, 3600B |
| EBAC02DFA | Bracket, Downflow Conversion Kit – “A” Coil | 4200B, 4800B, 6000B |
| EBAC01SPK | Single Point Wiring Kit | Only for use with 15 kW & 20 kW fused heaters |
| Square D® part # QOU14100JBAF * | Single Point Wiring Kit – Square D® Jumper Bar Assembly | Only for use with EHK15AKB and EHK20AKB breaker heaters |
| EBAC01FKS | Filter Kit (washable, box of 12) | 1800B |
| EBAC01FKM | | 2400C, 3000B, 3600B |
| EBAC01FKL | | 4200B, 4800B, 6000B |
| NASA00101FR | Standard Filter Rack (12 x 20 x 1 filter required) | 1800B |
| NASA00201FR | Standard Filter Rack (16 x 20 x 1 filter required) | 2400C, 3000B, 3600B |
| NASA00301FR | Standard Filter Rack (20 x 20 x 1 filter required) | 4200B, 4800B, 6000B |
| EBAC01PLG | No Heat (Plug) Kit (box of 6) | Factory Installed |
| EBAC01CTK | PVC Condensate Trap Kit (box of 50) | ALL |
| EBAC01GSK | Horizontal Downflow Gasket Kit | ALL (required for horizontal right and downflow) |
| NAEB20101TX | TXV Kit, R-22, Aluminum Coils Only | 1800BL, 2400CL, 3600BL, 4200BL |
| NAEB20201TX | | 4800BL |
| NAEB20301TX | | 6000BL |

* Square D part number given for reference only. Check with local Square D supplier.

| ELECTRIC HEATERS | | |
|------------------|--|---|
| Part Number | Description | Use with Model Sizes |
| EHK05AKN | 5 kW, single phase, no internal circuit protection | ALL |
| EHK05AKB | 5 kW, single phase, with circuit breakers | ALL |
| EHK07AKN | 8 kW, single phase, no internal circuit protection | ALL |
| EHK07AKB | 8 kW, single phase, with circuit breakers | ALL |
| EHK09AKCN | 9 kW, supplied as single phase, field convertible to 3-phase, no internal circuit protection | 3600B, 4200B, 4800B, 6000B |
| EHK10AKN | 10 kW, single phase, no internal circuit protection | ALL |
| EHK10AKB | 10 kW, single phase, with circuit breakers | ALL |
| EHK15AKF | 15 kW, single phase, with fuses | 2400C, 3000B, 3600B, 4200B, 4800B, 6000B |
| EHK15AKB | 15 kW, single phase, with circuit breakers | 2400C, 3000B, 3600B, 4200B, 4800B, 6000B |
| EHK15AHN | 15 kW, 3-phase, no internal circuit protection | 3600B, 4200B, 4800B, 6000B |
| EHK18AHN | 18 kW, 3-phase, no internal circuit protection | 4200B, 4800B, 6000B |
| EHK20AKF | 20 kW, single phase, with fuses | 3000B, 3600B, 4200B, 4800B, 6000B |
| EHK20AKB | 20 kW, single phase, with circuit breakers | 3600B, 4200B, 4800B, 6000B |
| EHK25AHCF | 24 kW, supplied as 3-phase, field convertible to single phase, with fuses | 4800B, 6000B |
| EHK30AHCF | 30 kW, supplied as 3-phase, field convertible to single phase, with fuses | 4800B, 6000B |