

**REHVAC NITROGEN PURGING EQUIPMENT**

**Regulators**

Rehvac nitrogen and CO<sub>2</sub> regulators feature a machined brass piston with internal bleed-down safety. This design makes the Rehvac regulator long lasting and reliable.

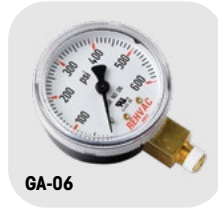


**CT-475M**

CATALOG NO.	DESCRIPTION	UOM	ORDER MULTIPLE
<b>CA-252C</b>	Rehvac Adjustable Regulator, 0-250psi	EA	1
<b>CT-475M</b>	Regulator, N/CO <sub>2</sub> – 0-475 psi	EA	1

**Gauges**

Rehvac replacement gauges are reliable and easy to read.



**GA-06**

CATALOG NO.	DESCRIPTION	UOM	ORDER MULTIPLE
<b>GA-06</b>	Rehvac 600psi Low Pressure Replacement Gauge	EA	1
<b>GA-30</b>	Rehvac 3000psi High Pressure Replacement Gauge	EA	1

**Hoses**

Rehvac hoses are designed specifically for air, nitrogen, or CO<sub>2</sub> service. Featuring a 600psi working pressure and a 2200psi burst pressure, Rehvac hoses are abrasion resistant and long lasting.



**CW-30**

CATALOG NO.	DESCRIPTION	UOM	ORDER MULTIPLE
<b>CW-30</b>	Rehvac 30" Whip Hose	EA	1

**Nitrogen Purge Tool**

The Nitrogen Purge Tool is a quick and easy way to purge copper pipes with nitrogen. Then, with a turn of the dial, quickly switch to a very low flow of nitrogen to properly braze the copper. It has a durable aluminum design so you can just throw it into your tool bag when you are done.



**DP-1**

CATALOG NO.	DESCRIPTION	UOM	ORDER MULTIPLE
<b>DP-1</b>	Nitrogen Purge Tool	EA	1

**REHVAC REFILLABLE GAS CYLINDERS**

**Nitrogen Cylinders**

Rehvac aluminum nitrogen cylinders from DiversiTech are commonly used in the HVAC industry for line cleaning and purging, pressure testing and braze purging. Made in the USA.



**N20-SD**

CATALOG NO.	DESCRIPTION	UOM	ORDER MULTIPLE
<b>N20-SD</b>	Rehvac Nitrogen Cylinder 57 cu ft	EA	1

**CO<sub>2</sub> Cylinders**

Rehvac aluminum CO<sub>2</sub> cylinders from DiversiTech are commonly used in the HVAC industry for condensate line cleaning.



**C10**

CATALOG NO.	DESCRIPTION	UOM	ORDER MULTIPLE
<b>C10</b>	Rehvac 10# Aluminum Cylinder	EA	1
<b>C1-2-6</b>	Rehvac 1.2# Cylinder	EA	1
<b>C20</b>	Rehvac 20# Aluminum Cylinder	EA	1
<b>C2-5</b>	Rehvac Cylinder, 2.5#	EA	1
<b>C5</b>	Rehvac 5# Aluminum Cylinder	EA	1