

# Duct Knives

for Flex and Ductboard  
with Hardened Stainless Steel!



HVAC-Tools of the Trade

**Ergonomic  
Cushioned Handle**  
offers comfortable, sure grip.

**Puncture Resistant  
Nylon Sheath**  
included with DK6S  
Cushion Gripped Knife.

DK6S



**Serrated Edge**  
on Model DK6S aids cutting  
"Flex" fiberglass wool duct.

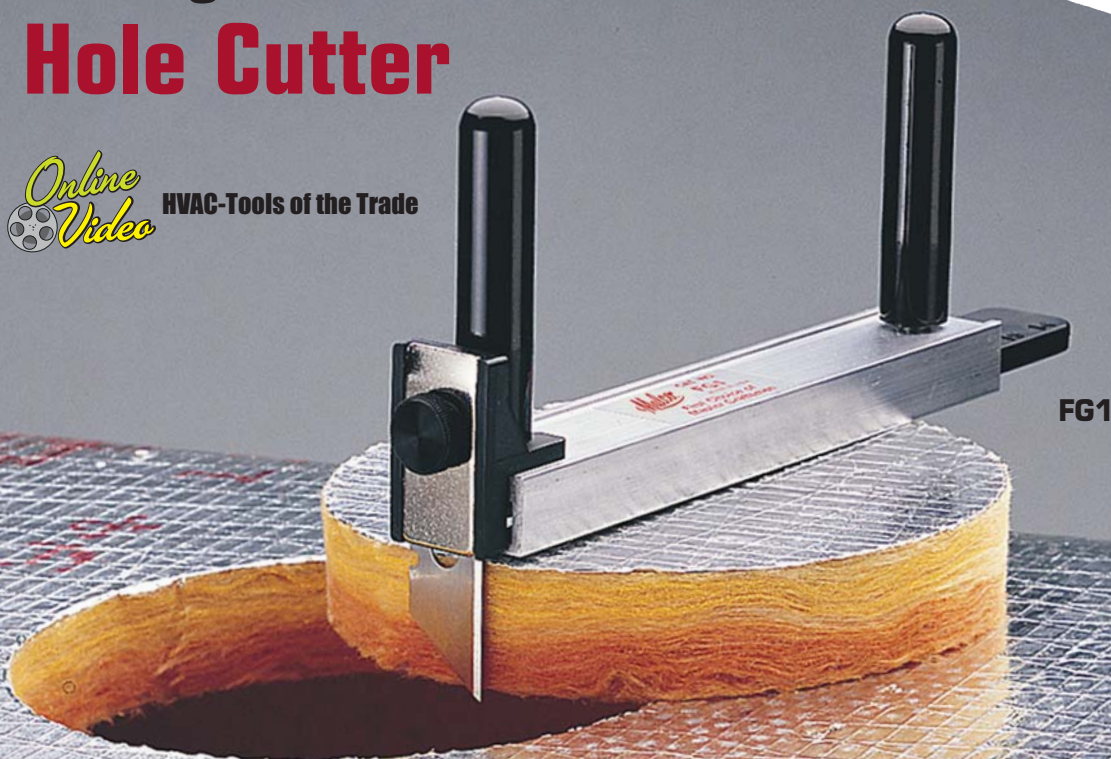
CATALOG NUMBER	DESCRIPTION	BLADE LENGTH IN. (MM)	NET WT. oz. (g)
DK6S	Cushioned-Gripped Duct Knife (Serrated)	6 (152)	7 (199)



# Fiberglass Duct Hole Cutter



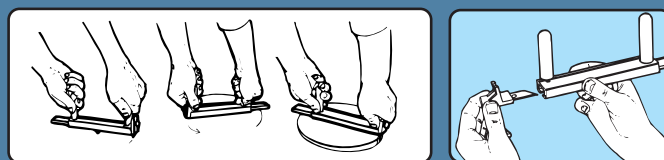
HVAC-Tools of the Trade



FG1

## Makes precise holes in ductboard for flex duct take-offs.

Supplied with standard double point utility knife blade for cutting 1 inch (25.4 mm) board. USE SPECIAL No. KBHC BLADE FOR 1-1/2 (38.1 mm) INCH DUCTBOARD. Cuts 4" to 20" (102 to 508 mm) diameter holes in fiberglass ductboard. Operation is fast and easy. Cutter rotates counter clockwise on a center pivot punch. Durable extruded aluminum frame and engineering grade molded plastic and nylon components. Blade holder stores in body for safety and to protect blade from damage when not in use.



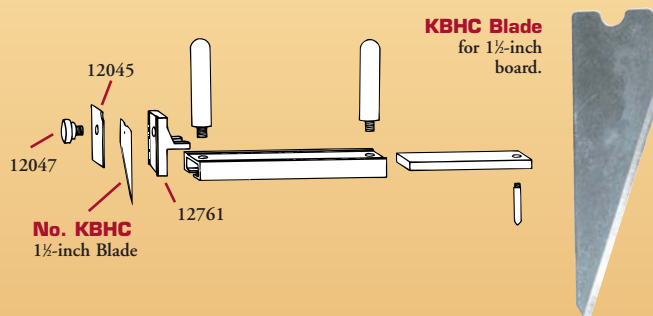
Rotate counter-clockwise as shown above.

Replacement blade KBHC

CATALOG NUMBER	HOLE DIAMETER IN. (MM)	NET WT. oz. (g)
FG1	4 to 20 (102 to 508)	7.5 (213)

## 1-1/2" (38.1 mm) Ductboard Blade for FG1

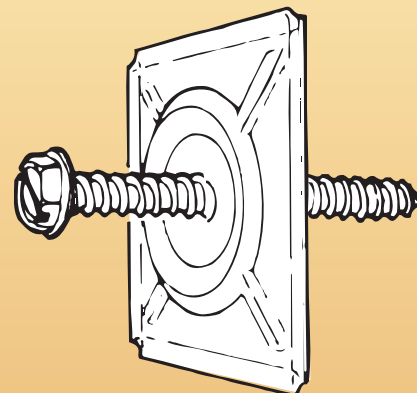
KBHC 1-1/2" (38 mm) Blade for FG1 Hole Cutter



## Replacement Parts for FG1

12761	Blade Holder
12045	Blade Clamp
12047	Blade Knob

## Fiberglass Ductboard Washer



### REINFORCEMENT WASHER

Use with #8 screw for fastening sheet metal components to fiberglass duct.

CATALOG NUMBER	DESCRIPTION
RW732	2-1/2" x 2-1/2" x .030" (64 x 64 x 0.76 mm) galvanized reinforced volcano washer with 7/32" (5.56 mm) diameter hole.





HVAC-Tools of the Trade

# FasGroov®

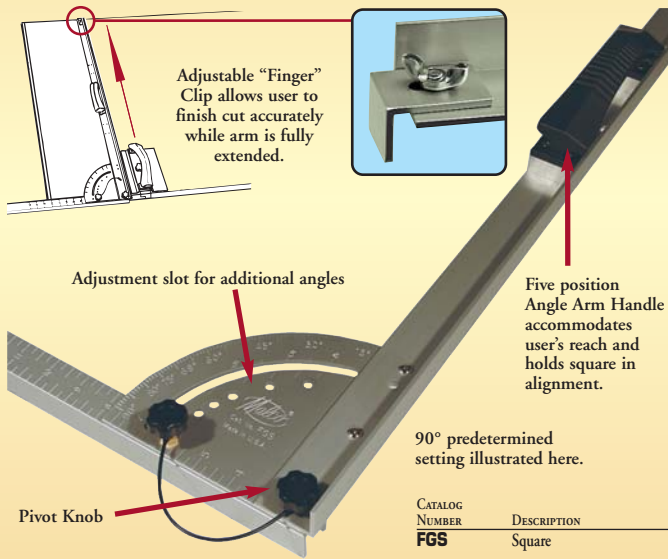
## Lay out ductboard as you cut with the FasGroov Fabricating System.

Single tools and full kits available for easy fabrication of all brands of 1" (25.4 mm) or 1-1/2" (38.1 mm) ductboard.

Malco's patented one-piece layout system incorporates a FasGroov Square with distinctive sled-style tools. Offsets built into square and tools allow you to lay out ductboard as you cut. Simply align dimensions on square with edge of previous cut and move across the board.

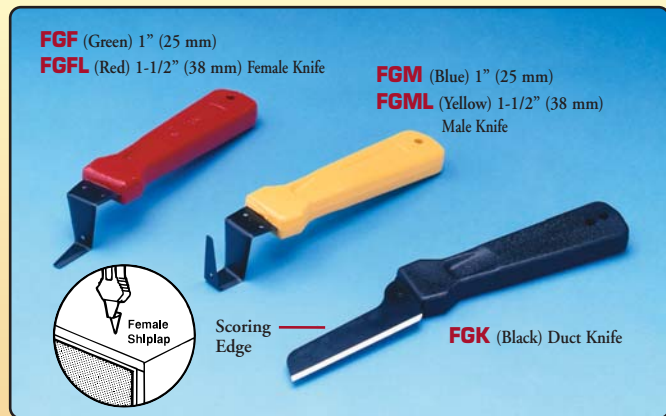
## FasGroov® Square

Easy-to-use, easy-to-adjust anodized aluminum square.



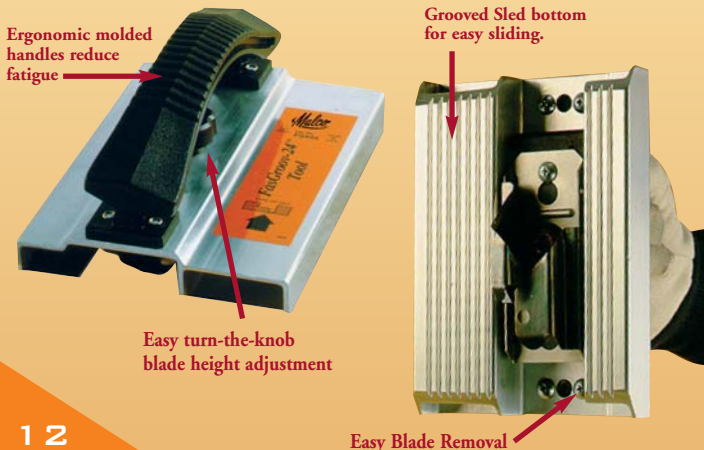
## FasGroov® Knives

Safer to use with comfortable molded handles. Male and Female Shiplap Knives for 1" (25.4 mm) and 1-1/2" (38.1 mm) ductboard can be used on closed duct sections. Duct Knife features a rounded scoring edge to cut fiberglass without tearing skin. Plus, Malco's No. FG1 Hole Cutter and a special 1-1/2" (38.1 mm) blade No. KBHC are available separately for creating flex duct take-offs.



## FasGroov® Hand Tools

Anodized aluminum sled-style tools for 1" (25.4 mm) and 1-1/2" (38.1 mm) ductboard. See page 13 for individual tool numbers and kits.



CATALOG NUMBER	DESCRIPTION
<b>SHIPLAP KNIVES FOR 1" (25.4 MM) BOARD</b>	
FGF	Female Shiplap Knife (Green)
FGM	Male Shiplap Knife (Blue)
<b>SHIPLAP KNIVES FOR 1-1/2" (38.1 MM) BOARD</b>	
FGFL	Female Shiplap Knife (Red)
FGML	Male Shiplap Knife (Yellow)
<b>DUCTBOARD KNIFE</b>	
FGK	Duct Knife (Black)





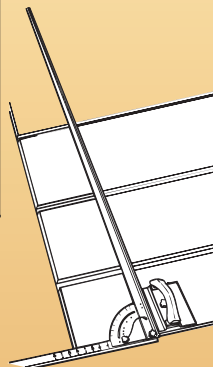
HVAC-Tools of the Trade

## FasGroov Hand Tools

	1" (25.4 mm) SILVER TOOLS		1-1/2" (38.1 mm) GOLD TOOLS	
	CATALOG NUMBERS		CATALOG NUMBERS	
	TOOLS	REPL. BLADE	TOOLS	REPL. BLADE
<b>#1 GRAY</b>  #1 Female Shiplap	FGV1	FGV1RB	FGL1	FGL1RB
 (12.7 mm) 1/2"			 (19.1 mm) 3/4"	
<b>#2/4 DARK ORANGE</b>  #2/4 R. Hand Shiplap	FGV24	FGV24RB	FGL24	FGL24RB
 (1.6 mm) 1/16"			 (3.2 mm) 1/8"	
<b>#3 ORANGE</b>  #3 L. Hand Shiplap	FGV3	FGV3RB	FGL3	FGL3RB
 (1.6 mm) 1/16"			 (3.2 mm) 1/8"	
<b>#5 BLUE</b>  #5 Staple Flap	FGV5	FGV5RB	FGL5	FGL5RB
 CUT			 CUT	
<b>VEE RED</b>  Vee-Groove	FGV	FGVRB	FGLV	FGLVRB
 (44.5 mm) 1-3/4" 1/8" (3.2 mm)			 (66.7 mm) 2-5/8" 1/8" (3.2 mm)	
<b>#6 TAN</b>  #6 Shiplap Trim Tool				

Use #6 Tool to shorten length of duct section, by measuring from outside edge of material to be scrapped. Available for 1-inch board only.

CATALOG NUMBER	DESCRIPTION	REPL. BLADE NUMBER
FGV6	#6 Shiplap Trim Tool	FGV6RB



## FasGroov

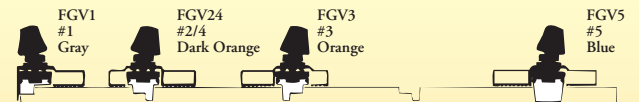
### Kits



See preceding page for description of FGS Square

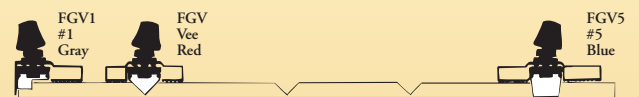
### Kits for 1" (25.4 mm) Ductboard

#### Shiplap Kit #FGSLK - Silver Hand Tools



Includes: FGS Square and tools listed above plus FGK, FGM and FGF Knives and #6 Tool FGV6 in Tool Case.

#### Vee Kit #FGVK



Includes: FGS Square and tools listed above plus FGK, FGM and FGF Knives and #6 Tool FGV6 in Tool Case.

### Kits for 1-1/2" (38.1 mm) Ductboard

#### Shiplap Kit #FGSLKL - Gold Hand Tools



Includes: FGS Square and tools listed above plus FGK, FGML and FGFL Knives in Tool Case. Order FGSLKLW for Shiplap Kit WITHOUT Square.

#### Vee Kit #FGVKL



Includes: FGS Square and tools listed above plus FGK, FGML and FGFL Knives in Tool Case. Order FGVKLW for Vee Kit WITHOUT Square.

