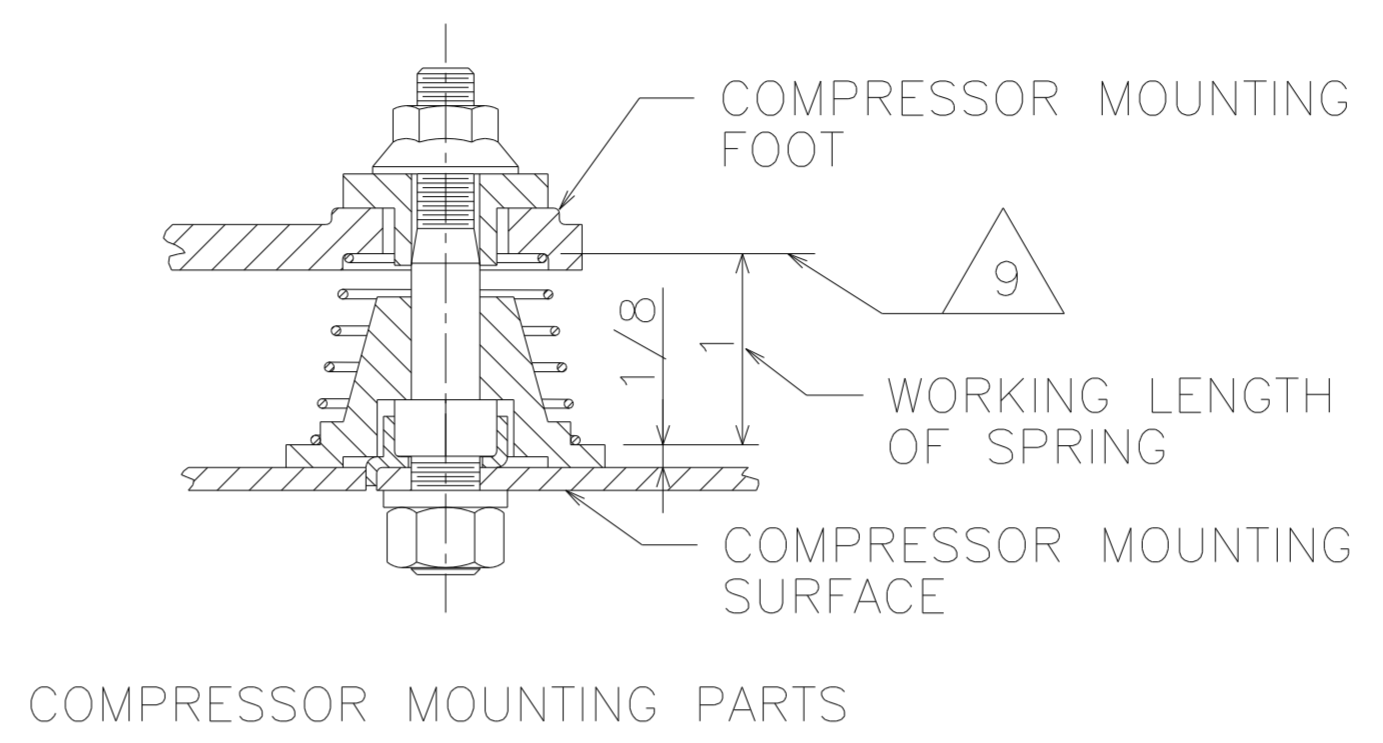
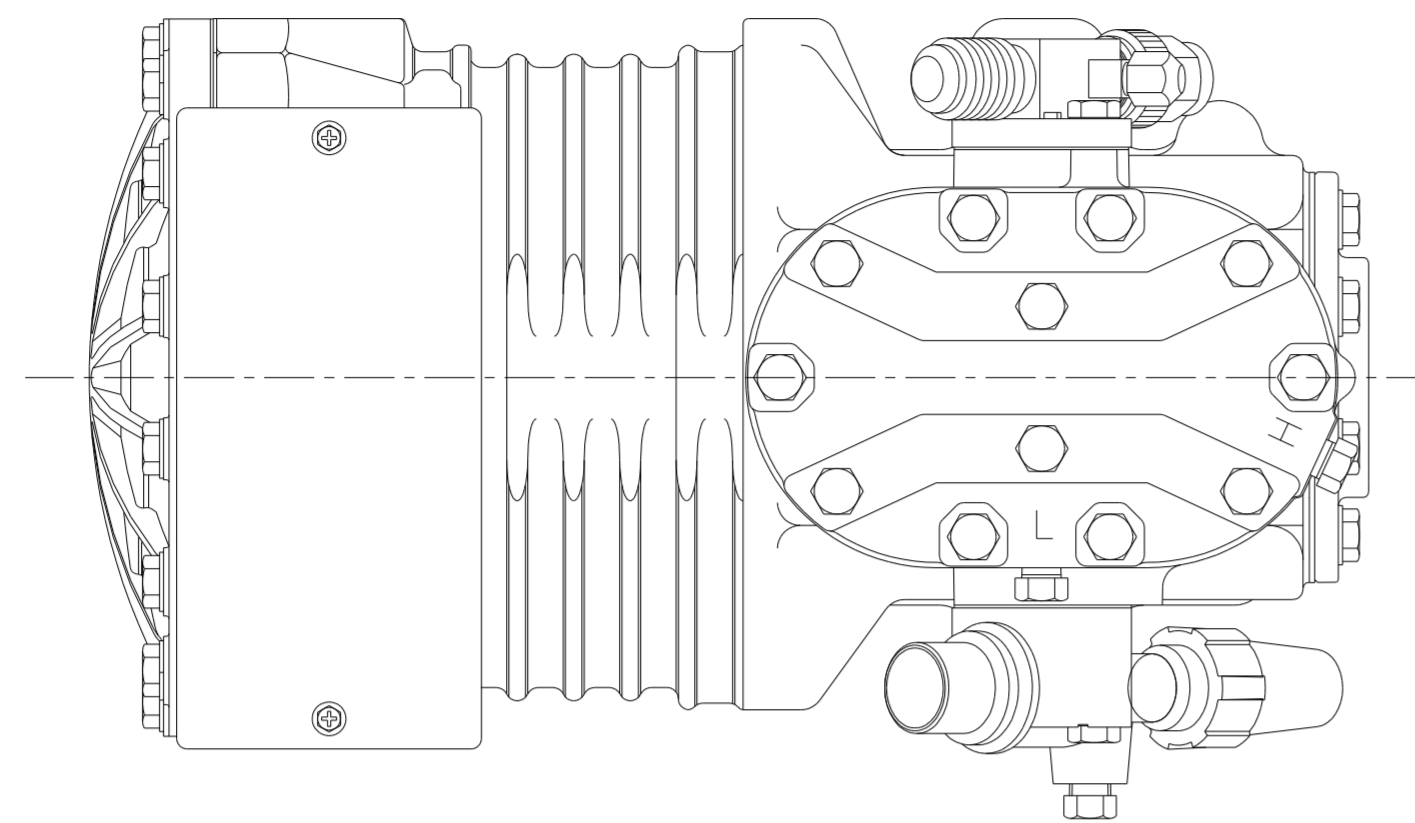
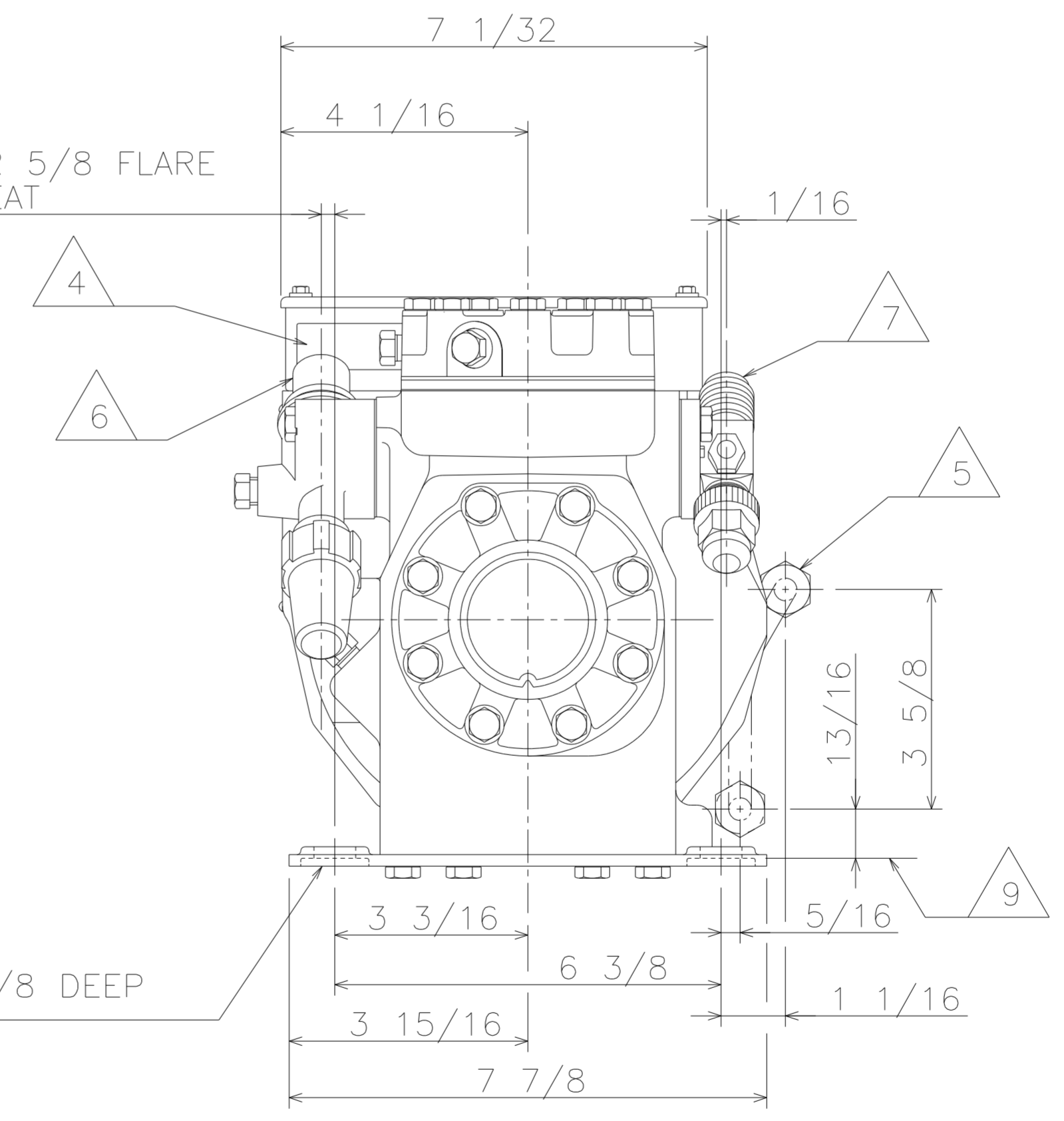
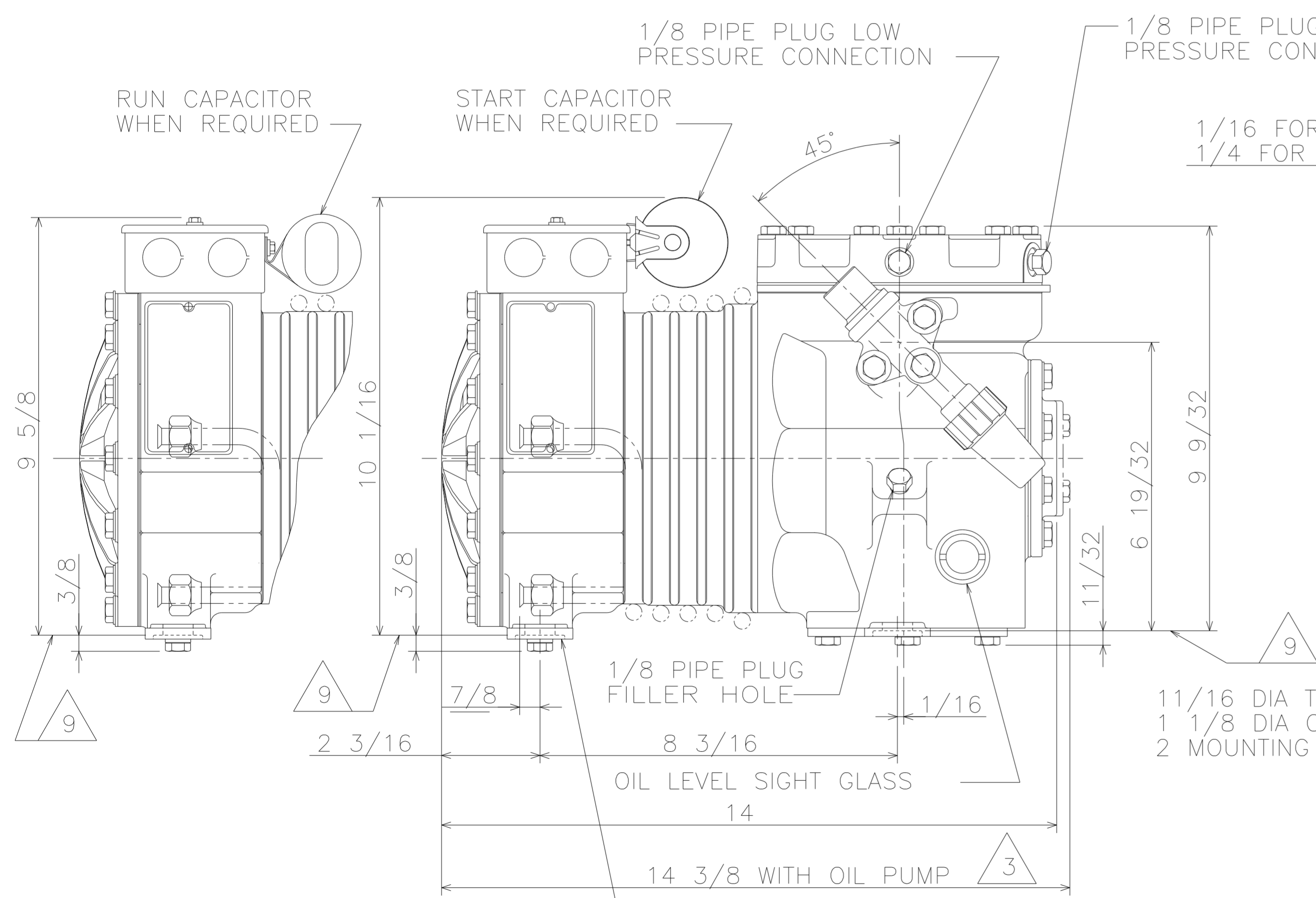


MODEL	3
KA*	
KAA*	
KAD*	
KAE*	
KAG*	
KAH*	
KAJ*	
KAK*	
KAL*	
KAM*	
KAN*	
KAR*	
KAT*	

SPECIFICATIONS	
ES NO.	DESCRIPTION



- NOTES:
1. VALVE DIRECTION CAN BE STEM UP OR STEM DOWN.
  2. 1 1/2 HORSEPOWER AND ABOVE ARE STANDARD WITH OIL PUMP.
  3. ALL COMPRESSORS WITH OIL PUMP ARE INDICATED BY AN ALPHABETICAL CHARACTER IN THE FOURTH DIGIT.
  4. PLACE CUSTOMER PART NUMBER IN APPROXIMATE LOCATION SHOWN, WHEN REQUIRED.
  5. WATER COIL OPTIONAL, WATER INLET AND OUTLET 3/8 FLARE.
  6. SUCTION VALVE: 1/2 FLARE, 5/8 FLARE OR 7/8 SWEAT,
  7. DISCHARGE VALVE: 3/8 FLARE, 1/2 FLARE OR 5/8 FLARE.
  8. ALL TOLERANCES ARE ±3/32 EXCEPT INDUSTRY STANDARDS APPLY TO FITTINGS AND VALVES.
  9. MOUNTING SPRING SURFACE.



31-0907-049	24	REDRAWN; CHG FORMAT FOR PROJECT INC	11-22-07	MMB	CHK	RST
10-0973-011	0	RELEASED	09-17-73	SL		
ENG NOTICE NO.	REV.NO.	REVISIONS	DATE	BY	CHKD	APPR

CONFIDENTIALITY NOTICE			
THIS DRAWING AND INFORMATION CONTAINED HEREIN ARE THE EXCLUSIVE PROPERTY OF EMERSON CLIMATE TECHNOLOGIES, INC. AND SHALL BE RETURNED UPON DEMAND AND SHALL NOT BE REPRODUCED IN WHOLE OR IN PART TO ANYONE ELSE OR USED, WITHOUT THE WRITTEN CONSENT OF EMERSON CLIMATE TECHNOLOGIES, INC.			
MATERIAL SPECIFICATION	DRAWN BY	SUPERSEDES DWG. NO. / REV. NO.	
N/A	MMB	497-0022-00 / 23	
	DATE	SCALE	DATE FORMAT:
	11-22-07	1:2	MM-DD-YY
TITLE	DRAWING NUMBER SHEET 1 OF 2		DWG SIZE
REF DWG-COPE COMP ASSM	497-0022-00		4

**EMERSON**  
Climate Technologies

**Copeland**  
brand products

INTERPRET PER ASME Y14.5M-1994 AND EMERSON CLIMATE TECHNOLOGIES, INC DESIGN STANDARDS\_DS2002  
DO NOT SCALE DRAWING

THIRD ANGLE PROJECTION

UNLESS OTHERWISE SPECIFIED DIMENSIONS ARE INCH OR (MILLIMETER)

TOLERANCES:  
2-PLACE ± N/A  
3-PLACE ± N/A  
ANGULAR ± N/A