

# REFRIGERATION CONDENSATE PANS

Designed for durability and long life, these high value pans are unmatched in quality.



- Corrosion resistant stainless steel construction
- Available In 120 volts, 208 volts and 240 volts
- Positive evaporation
- Space saving
- High limit safety and float switch operation
- Warranty One Year from date of installation

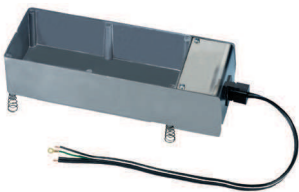


For further information refer to Product Sheet F221

PART NO.	CAPACITY	WATTS	VOLTS	DISSIPATION RATE PER DAY	FISHER EVAPOWAY®		DIMENSIONS L x W x H
					PART NO.		
CP801	1 3/4 QT	400	120	3 Gallon	DM04T-1S		10 x 7 x 2.5
CP802	2 1/2 QT	800	120	6 Gallon	DM08S-1S		13 x 7 x 2.5
CP802-240	2 1/2 QT	800	240	6 Gallon	DM08S-3S		13 x 7 x 2.5
CP804	4 1/2 QT	1000	120	6 Gallon	DM10M-S1		13 x 7 x 4
CP804-240	4 1/2 QT	1000	240	6 Gallon	DM10M-S3		13 x 7 x 4
CP804HD	7 1/2 QT	1000	120	6 Gallon	DM10W-1D		13 x 10 x 4
CP804HD-240	7 1/2 QT	1000	240	6 Gallon	DM10W-3D		13 x 10 x 4
CP807	7 1/2 QT	1000	120	10 Gallon	DM10W-1S		13 x 10 x 4
CP807-240	7 1/2 QT	1000	240	10 Gallon	DM15WW-1D		13 x 10 x 4
CP808	15 QT	1000	120	8 Gallon	DM10WW-1D		21 x 13 x 4
CP815	15 QT	1440	120	12 Gallon	DM10W-3		21 x 13 x 4
CP815-240	15 QT	1500	240	12 Gallon	DM15WW-3		21 x 13 x 4
CP816	7 QT	500	120	4.5 Gallon	DM05W-1D		13 x 10 x 4
CP817	7 QT	1000	208	8 Gallon	DM10W-2D		13 x 10 x 4
CP818	7 QT	1000	208	8 Gallon	DM10W-2S		13 x 10 x 4
CP819	7 QT	1500	120	12 Gallon	DM15W1D		13 x 10 x 4
CP820	7 QT	1500	208	12 Gallon	DM15W2D		13 x 10 x 4
CP821	15 QT	1500	208	12 Gallon	DM15WW-2D		21 x 13 x 4

Cast Aluminum Condensate Drains complete with long life heating element and mounting legs.

## 70



- PTC Controlled
- Self Regulating

PART NO.	CAPACITY	VOLTS	WATTS	EVAPORATOR	
				RATE	SIZE
70*	50 oz	117	300	4-5 oz/hr	12 1/4 x 4 3/4 x 3
75	75 oz	120	320	14 oz/hr	10" x 9" x 2 3/4"
30-OS	38 oz	120	160	8 oz/hr	10 x 4 x 2 7/8

\* Indicates NSF® Approved



## 30-OS



- Designed for continuous use

## LD10

### Line Drive Blow Out Valve

Used with CO<sub>2</sub> or Nitrogen, this two way blow out valve is economically priced and easy to use for condensate line maintenance.

- Condensate Line Size: 3/4" schedule 40 PVC material
- Hose Connection Size: 1/4" male flare (with Schrader)



For further information refer to Product Sheet F455

## WWG1

### Wireless Water Guard

- Electronic alarm detects water to prevent damage, mold and unsafe conditions.
- A wireless alarm allows monitoring of remote spaces, such as basements and attics.
- Loud 80 dB alarm on the WWG1, 110 db on the R10 remote receiver
- 3 AAA battery operated (not included)
- This equipment has been tested and found to comply with the limits for a class B digital device, pursuant to part 15 of the FCC rules.

COMING SOON!



R10

## WA100

### Condensate Water Alarm w/ Remote Sensor

- Protect property and valuable possessions
- 85 dB alarm sounds for up to 3 days
- Remote Sensor has 6 foot wire

For further information refer to Product Sheet F139



## WG1 Water Guard Economical Water Alarm

- 90 db alarm

For further information refer to Product Sheet F461

