



# HVAC INDUSTRIAL BELTS



**BANDO**

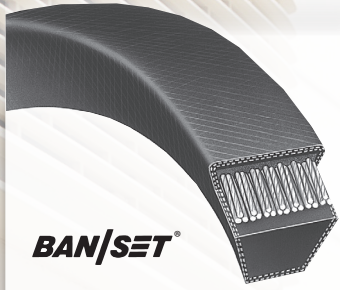
**PREMIUM QUALITY  
POWER TRANSMISSION BELTS**

---

S I N C E 1 9 0 6

---

# WORLD-WIDE MANUFACTURING • WORLD CLASS QUALITY

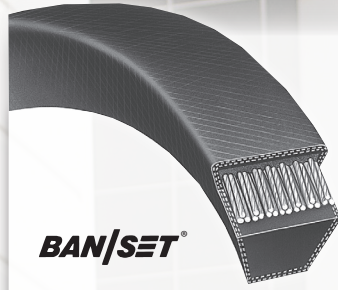


**BAN/SET®**

## **Duraflex GL®** (2L, 3L, 4L, 5L)

Designed for light duty fractional horsepower drives to provide long economical service life.

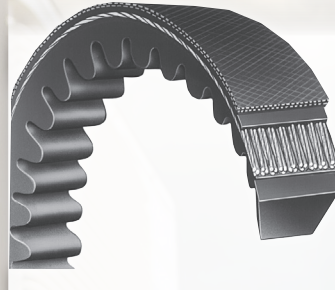
Duraflex® GL is a mainstay in the HVAC industry. 2L section features a cogged polyurethane construction.



**BAN/SET®**

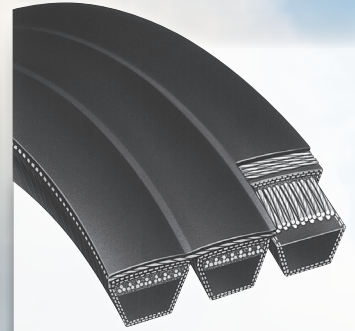
## **Power King®** (A, B, C, D, E)

Constructed of oil and heat resistant neoprene compound and high strength polyester cords, these classical section belts are designed to cut operating costs and reduce maintenance on multiple belt drives.



## **Power King® Cog** (AX, BX, CX) **Power Ace® Cog** (3VX, 5VX)

Energy efficient rawedge molded cog belts run cooler, last longer, and can accommodate smaller diameter sheaves, reducing costly maintenance and downtime.



## **Power King® Combo** (B, C, D) **Power Ace® Combo** (3V, 5V, 8V)

Stabilize problem drives where belts flip over or jump off sheaves due to shock loads with banded combo belts, built with a tough oil and heat-resistant tie band.

**BAN/SET®** System eliminates matching requirements.

**BANDO**