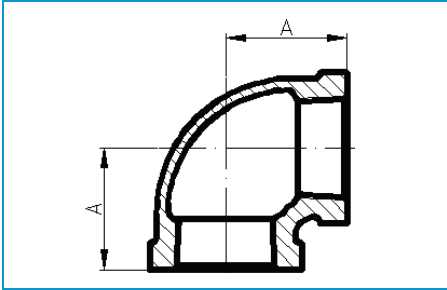


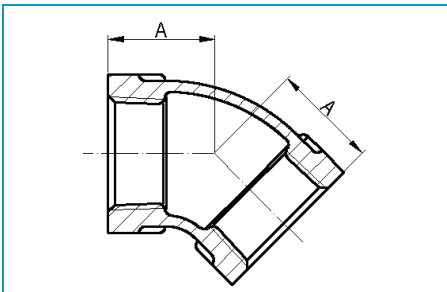
# Brass Fittings • Spec Sheet

**Brass Elbow 90**



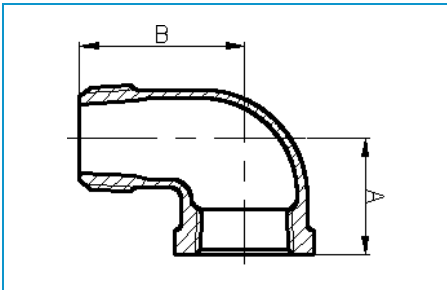
<b>Size</b>	<b>1/8</b>	<b>1/4</b>	<b>3/8</b>	<b>1/2</b>	<b>3/4</b>	<b>1</b>
A	0.54	0.71	0.82	1.01	1.18	1.43
<b>Size</b>	<b>1-1/4</b>	<b>1-1/2</b>	<b>2</b>	<b>2-1/2</b>	<b>3</b>	<b>4</b>
A	1.69	1.84	2.12	2.70	3.08	3.79

**Brass Elbow 45**



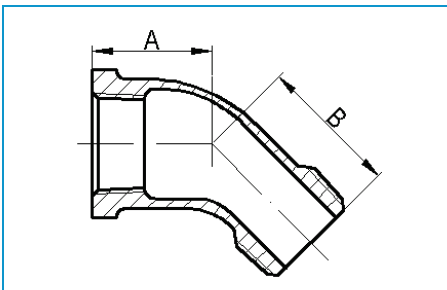
<b>Size</b>	<b>1/8</b>	<b>1/4</b>	<b>3/8</b>	<b>1/2</b>	<b>3/4</b>	<b>1</b>
A	0.42	0.56	0.63	0.78	0.89	1.06
<b>Size</b>	<b>1-1/4</b>	<b>1-1/2"</b>	<b>2</b>	<b>2-1/2</b>	<b>3</b>	<b>4</b>
A	1.22	1.30	1.45	1.95	2.17	2.61

**Brass Street Elbow 90**



<b>Size</b>	<b>1/8</b>	<b>1/4</b>	<b>3/8</b>	<b>1/2</b>	<b>3/4</b>	<b>1</b>
A	0.54	0.71	0.82	1.01	1.18	1.43
B	0.92	1.11	1.24	1.48	1.65	1.98
<b>Size</b>	<b>1-1/4</b>	<b>1-1/2</b>	<b>2</b>	<b>2-1/2</b>	<b>3</b>	<b>4</b>
A	1.69	1.84	2.12	2.64	3.01	3.72
B	2.24	2.46	2.88	3.80	4.45	5.63

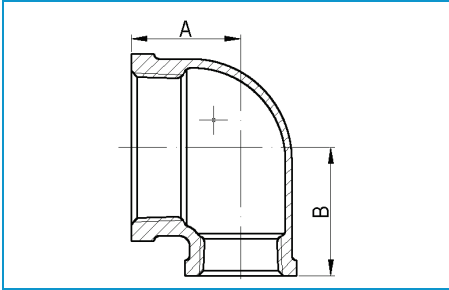
**Brass Street Elbow 45**



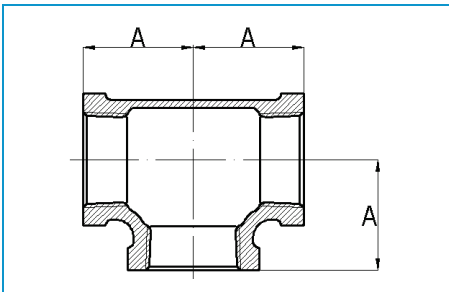
<b>Size</b>	<b>1/8</b>	<b>1/4</b>	<b>3/8</b>	<b>1/2</b>	<b>3/4</b>	<b>1</b>
A	0.42	0.56	0.63	0.78	0.89	1.06
B	0.78	0.88	0.92	1.06	1.23	1.40
<b>Size</b>	<b>1-1/4</b>	<b>1-1/2</b>	<b>2</b>	<b>2-1/2</b>	<b>3</b>	<b>4</b>
A	1.22	1.30	1.45	1.95	2.17	2.60
B	1.64	1.80	2.14	2.56	2.99	3.70

# Brass Fittings • Spec Sheet

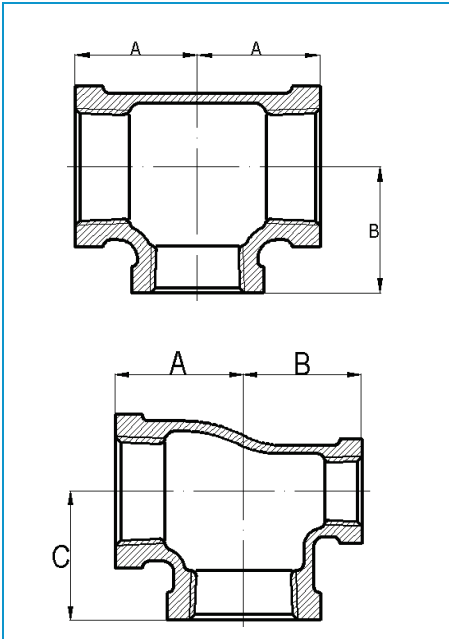
**Brass Reducing Elbow**



**Brass Tee**



**Brass Reducing Tee**



Size	3/8x1/4	1/2x1/8	1/2x1/4	1/2x3/8	3/4x1/8	3/4x1/4	3/4x3/8	3/4x1/2
A	0.75	0.87	0.93	0.93	1.04	1.02	1.08	1.08
B	0.79	0.91	0.95	0.90	1.06	1.06	1.10	1.11
Size	1x1/4	1x3/8	1x1/2	1x3/4	1-1/4x3/8	1-1/4x1/2	1-1/4x3/4	1-1/4x1
A	1.06	1.18	1.20	1.30	1.26	1.29	1.40	1.52
B	1.22	1.26	1.24	1.31	1.44	1.49	1.58	1.60
Size	1-1/2x1/2	1-1/2x3/4	1-1/2x1	1-1/2x1-1/4	2x1/2	2x3/4	2x1	2x1-1/4
A	1.26	1.50	1.56	1.67	1.48	1.59	1.67	1.89
B	1.50	1.73	1.73	1.77	1.87	1.97	1.97	2.09
Size	2x1-1/2	2-1/2x1/2	2-1/2x2	3 x 2	3 x 2-1/2	4 x 2	4 x 3	
A	1.89	2.09	2.39	2.48	2.82	2.72	3.29	
B	2.09	2.44	2.60	2.84	2.97	3.43	3.58	

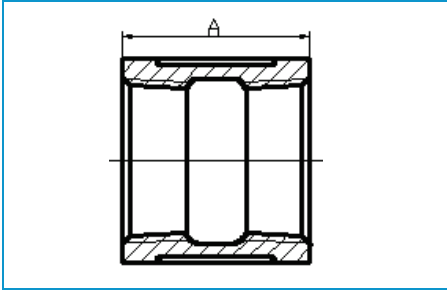
Size	1/8	1/4	3/8	1/2	3/4	1
A	0.54	0.71	0.82	1.01	1.18	1.43
Size	1-1/4	1-1/2	2	2-1/2	3	4
A	1.69	1.84	2.12	2.70	3.08	3.78

Size	3/8x1/8	3/8x1/4	1/2x1/4	1/2x3/8	1/2x1/2x3/4	3/4x1/4	3/4x3/8	3/4x1/2	3/4x3/4x1
A	0.75	0.81	0.87	0.92	1.11	1.04	1.08	1.08	1.28
B	0.79	0.92	0.87	0.90	1.11	1.06	1.11	1.11	1.26
Size	1x1/4	1x3/8	1x1/2	1x3/4	1-1/4x1/2	1-1/4x3/4	1-1/4x1	1-1/2x3/8	1-1/2x1/2
A	1.02	1.12	1.20	1.30	1.29	1.39	1.52	1.34	1.32
B	1.14	1.13	1.24	1.31	1.41	1.48	1.60	1.54	1.53
Size	1-1/2x3/4	1-1/2x1	1-1/2x1-1/4	2x3/8	2x1/2	2x3/4	2x1	2x1-1/4	
A	1.42	1.55	1.72	1.26	1.44	1.47	1.59	1.89	
B	1.60	1.72	1.81	1.81	1.83	1.72	1.95	2.09	
Size	2x1-1/2	2-1/2x1-1/4	2-1/2x1-1/2	2-1/2x2	3x1	3x2	3x2-1/2	4x2	4x3
A	1.90	1.97	2.16	2.32	1.93	2.52	2.75	2.66	3.23
B	2.10	2.40	2.51	2.54	2.64	2.89	2.91	3.37	3.54

Size	1/2x1/4x1/2	3/4x1/2x1/2	3/4x1/2x3/4	1x1/2x1/2	1x1/2x3/4	1x1/2x1
A	1.12	1.08	1.18	1.26	1.26	1.43
B	0.98	1.01	1.11	1.10	1.10	1.24
C	1.12	1.11	1.18	1.34	1.28	1.43
Size	1x3/4x1/2	1x3/4x3/4	1x3/4x1	1-1/4x1/2x1-1/4	1-1/4x3/4x1	
A	1.26	1.30	1.43	1.63	1.52	
B	1.20	1.18	1.31	1.36	1.38	
C	1.40	1.31	1.43	1.63	1.58	
Size	1-1/4x3/4x1-1/4	1-1/4x1x1-1/4	1-1/2x1/2x1-1/2	1-1/2x1-1/4x1-1/4	2x1/2x2	
A	1.63	1.63	1.93	1.66	2.24	
B	1.44	1.55	1.65	1.64	1.87	
C	1.63	1.63	1.93	1.76	2.24	

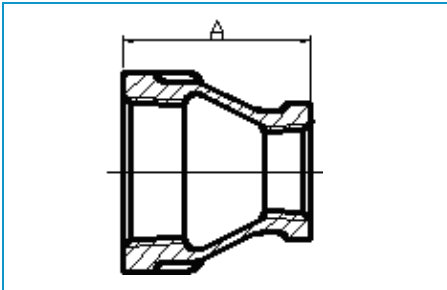
# Brass Fittings • Spec Sheet

**Brass Coupling**



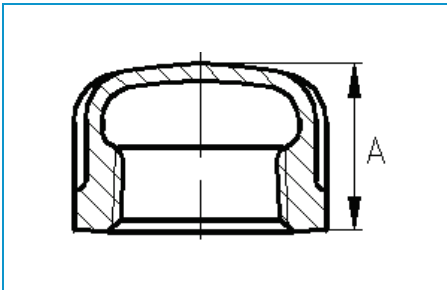
<b>Size</b>	<b>1/8</b>	<b>1/4</b>	<b>3/8</b>	<b>1/2</b>	<b>3/4</b>	<b>1</b>
A	0.80	0.97	1.05	1.29	1.43	1.68
<b>Size</b>	<b>1-1/4</b>	<b>1-1/2</b>	<b>2</b>	<b>2-1/2</b>	<b>3</b>	<b>4</b>
A	1.86	1.92	2.20	2.88	3.18	3.69

**Brass Reducing Coupling**



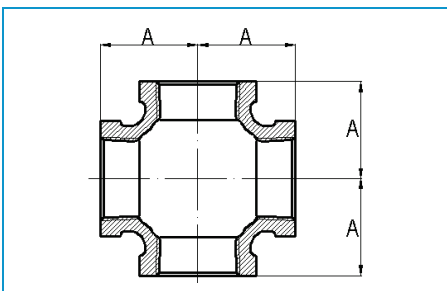
<b>Size</b>	<b>1/4x1/8</b>	<b>3/8x1/8</b>	<b>3/8x1/4</b>	<b>1/2x1/8</b>	<b>1/2x1/4</b>	<b>1/2x3/8</b>	<b>3/4x1/4</b>	<b>3/4x3/8</b>	<b>3/4x1/2</b>
A	0.88	1.01	1.01	1.13	1.13	1.17	1.24	1.24	1.36
<b>Size</b>	<b>1x3/8</b>	<b>1x1/2</b>	<b>1x3/4</b>	<b>1-1/4x1/2</b>	<b>1-1/4x3/4</b>	<b>1-1/4x1</b>	<b>1-1/2x1/2</b>	<b>1-1/2x3/4</b>	
A	1.44	1.49	1.56	1.65	1.65	1.77	1.80	1.80	
<b>Size</b>	<b>1-1/2x1</b>	<b>1-1/2x1-1/4</b>	<b>2x1/2</b>	<b>2x3/4</b>	<b>2x1</b>	<b>2x1-1/4</b>	<b>2x1-1/2</b>	<b>2-1/2x1</b>	
A	1.80	1.89	2.03	2.03	2.03	2.03	2.06	3.25	
<b>Size</b>	<b>2-1/2x1-1/4</b>	<b>2-1/2x1-1/2</b>	<b>2-1/2x2</b>	<b>3x1</b>	<b>3x1/2</b>	<b>3x2</b>	<b>3x2-1/2</b>	<b>4x2</b>	<b>4x3</b>
A	3.17	3.25	3.25	3.68	3.62	3.69	3.66	4.29	4.37

**Brass Cap**



<b>Size</b>	<b>1/8</b>	<b>1/4</b>	<b>3/8</b>	<b>1/2</b>	<b>3/4</b>	<b>1</b>
A	0.49	0.59	0.65	0.76	0.84	0.99
<b>Size</b>	<b>1-1/4</b>	<b>1-1/2</b>	<b>2</b>	<b>2-1/2</b>	<b>3</b>	<b>4</b>
A	1.10	1.15	1.32	1.70	1.80	2.08

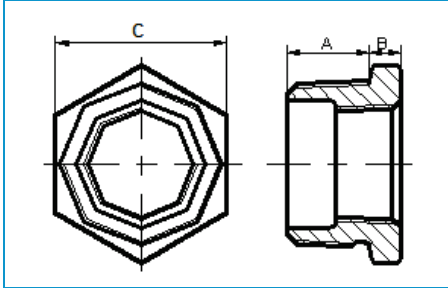
**Brass Cross**



<b>Size</b>	<b>1/8</b>	<b>1/4</b>	<b>3/8</b>	<b>1/2</b>	<b>3/4</b>	<b>1</b>
A	0.54	0.71	0.82	1.01	1.18	1.43
<b>Size</b>	<b>1-1/4</b>	<b>1-1/2</b>	<b>2</b>			
A	1.69	1.84	2.12			

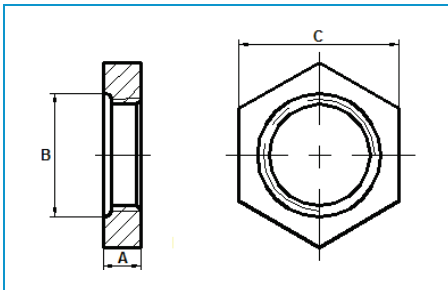
# Brass Fittings • Spec Sheet

## Brass Bushing



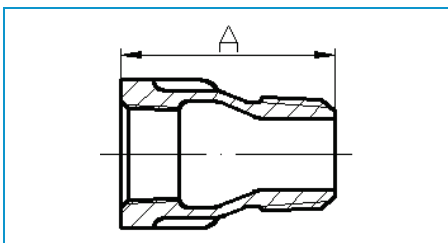
Size	1/4x1/8	3/8x1/8	3/8x1/4	1/2x1/8	1/2x1/4	1/2x3/8	3/4x1/8	3/4x1/4
A	0.44	0.48	0.48	0.56	0.56	0.56	0.63	0.63
B	0.14	0.16	0.16	0.19	0.19	0.19	0.22	0.22
C	0.64	0.68	0.68	0.87	0.87	0.87	1.15	1.15
Size	3/4X3/8	3/4X1/2	1X1/4	1X3/8	1X1/2	1X3/4	1-1/4X1/2	1-1/4X3/4
A	0.63	0.63	0.75	0.75	0.75	0.75	0.80	0.80
B	0.22	0.22	0.30	0.30	0.25	0.25	0.34	0.28
C	1.15	1.15	1.12	1.12	1.42	1.42	1.34	1.76
Size	1-1/4X1	1-1/2X1/4	1-1/2X3/8	1-1/2X1/2	1-1/2X 3/4	1-1/2X1	1-1/2X1-1/4	
A	0.80	0.83	0.84	0.83	0.83	0.83	0.83	
B	0.28	0.37	0.35	0.37	0.37	0.34	0.34	
C	1.76	1.16	1.12	1.34	1.61	2.0	2.0	
Size	2X1/2	2X3/4	2X1	2X1-1/4	2X1-1/2	2-1/2X1	2-1/2X1-1/4	
A	0.88	0.88	0.88	0.88	0.88	1.07	1.07	
B	0.41	0.41	0.41	0.34	0.34	0.44	0.45	
C	1.34	1.63	1.95	2.48	2.48	1.95	2.40	
Size	2-1/2X1-1/2	2-1/2X2	3X1-1/2	3X2	3X2-1/2	4X2	4X2-1/2	4X3
A	1.07	1.07	1.16	1.13	1.13	1.22	1.24	1.22
B	0.44	0.37	0.49	0.48	0.40	0.60	0.61	0.51
C	2.68	2.98	2.68	3.28	3.86	3.28	3.88	4.59

## Brass Locknut



Size	1/8	1/4	3/8	1/2	3/4	1
A	0.19	0.25	0.29	0.31	0.34	0.38
B	0.50	0.66	0.77	0.97	1.23	1.50
C	0.69	0.84	1.00	1.18	1.43	1.75
Size	1-1/4	1-1/2	2	4		
A	0.42	0.47	0.53	0.91		
B	1.86	2.12	2.63	2.88		
C	2.10	2.35	2.88	5.32		

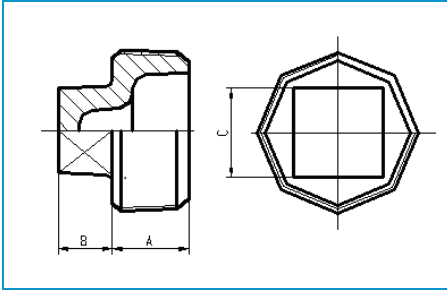
## Brass Extension Piece



Size	1/2	3/4
A	1.69	1.89

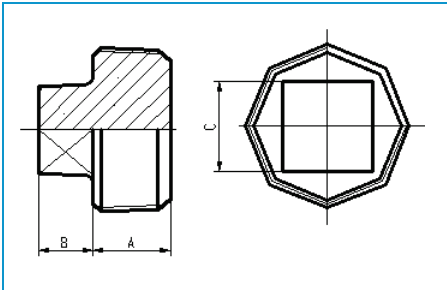
# Brass Fittings • Spec Sheet

**Brass Plug**



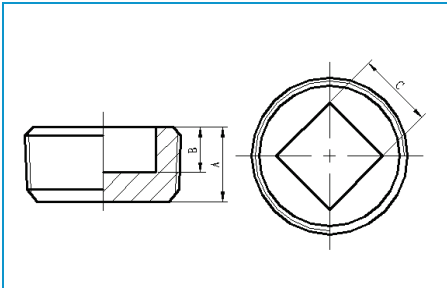
Size	1/8	1/4	3/8	1/2	3/4	1
A	0.27	0.41	0.41	0.54	0.55	0.69
B	0.24	0.28	0.31	0.38	0.44	0.50
C	0.28	0.37	0.43	0.56	0.62	0.81
Size	1-1/4	1-1/2	2	2-1/2	3	4
A	0.73	0.73	0.76	1.07	1.13	1.22
B	0.57	0.56	0.62	0.68	0.74	0.80
C	0.941	1.12	1.31	1.50	1.69	2.25

**Brass Solid Plug**



Size	1/2	3/4	1	1-1/4	1-1/2	2
A	0.54	0.55	0.69	0.71	0.73	0.76
B	0.38	0.44	0.50	0.55	0.56	0.62
C	0.56	0.62	0.81	0.94	1.12	1.31
Size	2-1/2	3	4			
A	1.08	1.16	1.26			
B	0.77	0.83	1.02			
C	1.45	1.63	2.17			

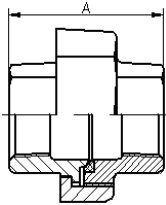
**Brass Countersunk Plug**



Size	1/2	3/4	1	1-1/2
A	0.54	0.55	0.71	0.73
B	0.38	0.44	0.60	0.62
C	0.37	0.50	0.50	0.75
Size	2	2-1/2	3	4
A	0.76	1.08	1.13	1.22
B	0.68	0.91	0.80	0.99
C	0.87	1.25	1.38	2.12

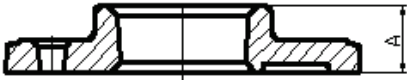
# Brass Fittings • Spec Sheet

**Brass Union**



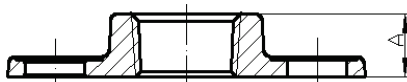
Size	1/8	1/4	3/8	1/2	3/4	1
A	1.26	1.46	1.61	1.73	1.95	2.07
Size	1-1/4	1-1/2	2	2-1/2	3	4
A	2.26	2.42	2.76	3.23	3.50	3.86

**Brass Floor Flange**



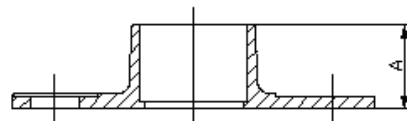
Size	1/2	3/4	1	1-1/4	1-1/2
A	0.53	0.60	0.71	0.75	0.87

**Brass Companion Flange Threaded**



Size	1/2	1	1-1/2	2	2-1/2	3	4
A	0.59	0.69	0.88	1.00	1.12	1.19	1.31

**Brass Companion Flange Sweat**



Size	1	1-1/2	2	2-1/2	3	4
A	0.98	1.19	1.44	1.60	1.79	2.28