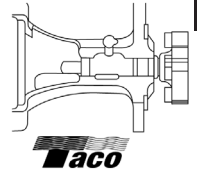


# CIRCULATOR BEARING ASSEMBLIES

## Taco

### New and Remanufactured Circulator Bearing Assemblies

Size	Impeller Diam.	Mfr#	Item#	Reman#
3/4" to 1-1/2"	2-1/2"	110-361RP	B83	B83R
3/4" to 1-1/2"	2-1/2"	HC, 100 bronze		B83-1R
2-1/2"	4-1/4"	121-7		B84-19R
3/4" to 1-1/2" HD	2-3/4"	112 (3450 RPM)		B84-20R
3/4" to 1-1/2"	3-1/2"	HDH, 111-1 thru 111-3		B85R
3/4" to 1-1/2"	3-3/4"	HDH, 111-4 thru 111-8		B85-1R
3/4" to 1-1/2"	3-3/4"	HDH, 111-12		B85-2R
3/4" to 1-1/2"	3-3/4"	111B (bronze)		B85-4R



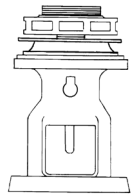
4

## Taco

### Remanufactured HC and HD Circulator Bearing Assemblies

Commercial sizes.

Size	Mfr#	Reman#
2"	HC20, 120-6 thru 120-12, 3/8" shaft	B86R
2"	HC20, 120-4, 120-5, 3/8" shaft	B86-2R
1" to 1-1/2"	HD (vertical)	B87R



HYDRONICS

## Taco

### Remanufactured 1600 Series Circulator Bearing Assemblies

For 1600 series. Remanufactured with cartridge, less impeller. For bearing cartridge, see #B67-60R.

Casting#	Reman#
1600-155	B89R
1600-175	B89-1R
1604-023	B89-2R
1604-025	B89-3R



**NOTE:** Remanufactured products available only on exchange for similar defective units.