



MECHANICAL INSULATION

Solutions Portfolio

Armacell specializes in comprehensive mechanical insulation solutions engineered for the unique construction challenges of today. Our targeted insulation Solutions Portfolio offers the right products for code compliance, system performance, and budget.

- // Education, Schools, and Universities
- // Healthcare, Hospitals, and Medical
- // Office/Mixed-Use
- // Data Centers
- // Multi-Family
- // Hotels and Hospitality
- // Supermarkets
- // Airports

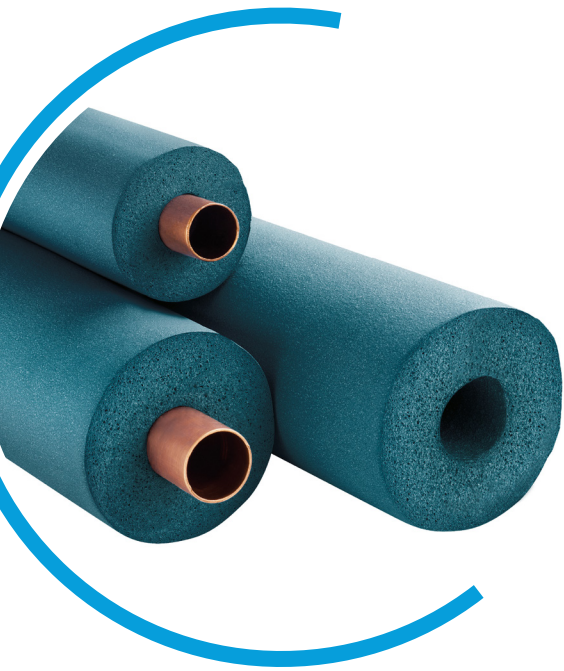
www.armacell.com



armacell®

MAKING A DIFFERENCE AROUND THE WORLD

ARMACELL HAS THE SOLUTIONS



The Solutions Portfolio groups the vast Armacell insulation products into comprehensive packages aimed at making the specification of the right insulation for mechanical systems easier.



300+
active patents

25
facilities in
19 countries on
4 continents

Over
3,000
employees worldwide
representing
70 different
nationalities

Mechanical engineers, insulation contractors, building owners, and distributors can easily identify the best insulation products for use in an air plenum, on plumbing and mechanical piping, and on chilled water and hydronic heating systems – the key places where insulation is critical to the performance of the equipment. Packages are defined by product performance offering two levels of cost and service.

The Solutions Portfolio targets the top project types seen in the construction industry including: Education, Healthcare, Office/Mixed-Use, Data Centers, Multi-Family, Supermarket, Hotel and Airport construction. Each destination faces its own design challenges and Armacell is providing a time-saving way to determine the right approach for each particular job.

Expanded limited warranties for up to 15 years are available giving specifiers, installers, and the building owner peace of mind that the product is backed by Armacell's 70 years of industry expertise.

Comprehensive specification packages are available to help engineers quickly specify the appropriate product package for the entire job. Armacell has full-time specification teams dedicated to educating specifiers and contractors on the new solutions-based approach to choosing products. Lunch & Learns are available to introduce the packages to specifiers and end-users.

Ask your Armacell representative to assist you in identifying the correct Solutions Portfolio package for your next project.



OVER
176 MILLION FT³
OF INSULATION
PRODUCED
PER YEAR



STAKEHOLDER:

BUILDING OWNER

Seeking Long-term Results

It's your building and you're in it for the long-haul. Short-sighted solutions and value-engineering are not in your best interest. That's why Armacell promotes the use of long-lasting Armacell insulation solutions that, when installed properly, will last the lifetime of the mechanical system and reduce maintenance headaches. Mechanical insulation typically accounts for less than 1% of construction costs, but typically has a payback period of less than one year. When you make the right choice, your insulation

can help ensure higher performance, longer service life and greater efficiency of your equipment. All of that will save you money over time. Ask your design team to take these factors into consideration at the design stage and to specify an Armacell Solutions Portfolio insulation package at the 10- or 15-year warranty level to make sure you have a high-performance building.

Value Proposition

- Reduced Risk of Downtime
- Tailored Solutions for Code Compliance, Performance and Budget
- Low Installed Costs, Short Payback Period
- System and Performance Integrity - Virtually maintenance free
- Significant Energy Savings
- Backed by an Industry Leader with over 70 years industry experience and up to a 15-year warranty



STAKEHOLDER:

MECHANICAL ENGINEERS

Specifiers Hold the Keys to Project Success

At Armacell, we know that the specifier is the key to a successful mechanical insulation system. We believe that providing the mechanical engineer or system designer with the knowledge and tools to make the right selection in the design phase is fundamental to the durability and energy efficiency of any HVAC or plumbing project. Mechanical system designers can have a significant impact on occupant health and must take steps during the design and construction phases to ensure efficient system performance, condensation control,

long-lasting thermal protection, acoustic benefits and healthier indoor air quality. Armacell's Technical team is here to help Mechanical Engineers and Specifiers with any insulation project. Their full-time job is to support you in any way that helps simplify the thermal and acoustic specification process.

Value Proposition

- Energy-efficient, High-performing Systems
- Tailored Solutions for Code Compliance, Performance and Budget
- Trusted Protection for System and Design
- Simple, Safe and Efficient System Integrity
- Drag & Drop Specification Package by Division
- Backed by an Industry Leader with over 70 years industry experience and up to a 15-year warranty

STAKEHOLDER:

CONTRACTOR

Installers Make it Happen

Armacell understands the importance of the insulation contractor in the selection and proper installation of mechanical insulation products for equipment, pipes and ducts. Insulation contractors routinely make critical decisions that can – for better or for worse – affect the outcome of the project. These decisions must take into account a variety of factors, including building codes, specific application challenges, insulation capability, as well as time and budget constraints. We strive to help insulation contractors

rise to the challenge of their job in a couple of ways. First, our Technical Managers and Installation Specialists, all of whom are experts in the selection and application of all our foam materials, are fully prepared to respond to any technical questions that may arise. Second, we work closely with an extensive network of distributors so that they can provide a quick response on pricing and availability of our products.

Value Proposition

- Long-lasting, Fewer Callbacks
- Tailored Solutions for Code Compliance, Performance and Budget
- System and Performance Integrity - Virtually maintenance free
- One system to Support and Insulate
- Backed by an Industry Leader with over 70 years industry experience and up to a 15-year warranty
- AQIP Training, Field Support and On-Call Technical Support
- National Distribution Network



STAKEHOLDER:

DISTRIBUTORS

Committed to Your Success

Distributors and wholesalers want and need suppliers who are willing to work with them as partners. As a partner, a supplier should be able to provide both the goods and services that enhance the distributorship's growth and helps it adapt as the business climate changes. It's this partnership that inspires confidence and trust in the supplier.

That's what Armacell brings to each one of its distributor/wholesaler relationships. It is a business philosophy that dates back to 1954 with the introduction of ArmaFlex. Today with five manufacturing operations in North America, and 27 manufacturing

facilities worldwide, Armacell has the capacity and logistics network to reliably meet the inventory demands of distributors. Our product knowledge, innovation and research continue to make us the global leader in closed-cell foam production. We are experts in the industry and are poised to support our distributors in their success.

Value Proposition

- Tailored Solutions for Code Compliance, Performance and Budget
- Single Sourced Solution
- Job-site Direct Shipping
- Broadest Insulation and Accessory Portfolio
- Backed by an Industry Leader with over 70 years industry experience and up to a 15-year warranty
- Dedicated Sales and Service Teams to support your staff and customers



ARMACELL HAS THE SOLUTIONS



- // Energy-efficient, High-performing Systems
- // Energy-saving, High ROI
- // Reduced Risk of Downtime, Fewer Callbacks
- // Long-lasting, Sustainable

SOLUTIONS PORTFOLIO PACKAGES

Application / System Type

	Core Performance Requirements	SP1 Solutions Package Superior Performance	SP2 Solutions Package High Performance
Specification	www.armacell.com/en-US/armacell-solutions-portfolio		
Air Plenum Piping and Duct Insulation	<ul style="list-style-type: none"> • Flame spread 25, smoke developed 50 • UL Classified to UL 723 (Listed and Labeled) • Energy Efficient & Low Total Install Costs • Mold and Mildew Resistance • Tough & Durable • Compliant to all State and City Building Codes 	<ul style="list-style-type: none"> • ArmaFlex Ultima Insulation 	<ul style="list-style-type: none"> • ArmaFlex Ultima Insulation
HVAC/R & Mechanical Piping	<ul style="list-style-type: none"> • Flame spread 25, smoke developed 50 • Energy Efficient & Low Total Install Costs • Mold and Mildew Resistance • Tough & Durable • Compliant to all State and City Building Codes 	<ul style="list-style-type: none"> • ArmaFlex Ultima Insulation • ArmaFlex Shield Pipe Insulation 	<ul style="list-style-type: none"> • AP/ArmaFlex Insulation • ArmaFlex UT Insulation
VRV-VRF System	<ul style="list-style-type: none"> • Flame spread 25, smoke developed 50 • Energy Efficient & Low Total Install Costs • Mold and Mildew Resistance • Tough & Durable • Compliant to all State and City Building Codes • Upper temperature of 300° use 	<ul style="list-style-type: none"> • ArmaFlex UT Insulation 	<ul style="list-style-type: none"> • AP/ArmaFlex Insulation
Central Utility Plant Operations: Chilled Water and Hydronic Heating	<ul style="list-style-type: none"> • Flame spread 25, smoke developed 50 • Energy Efficient & Low Total Install Costs • Mold and Mildew Resistance • Tough & Durable • Compliant to all State and City Building Codes 	<ul style="list-style-type: none"> • ArmaFlex Ultima Insulation • ArmaFlex Shield Pipe Insulation 	<ul style="list-style-type: none"> • AP/ArmaFlex Insulation • ArmaFlex UT Insulation
Plumbing	<ul style="list-style-type: none"> • Flame spread 25, smoke developed 50 • Energy Efficient & Low Total Install Costs • Mold and Mildew Resistance • Tough & Durable • Compliant to all State and City Building Codes 	<ul style="list-style-type: none"> • ArmaFlex Ultima Insulation • ArmaFlex Shield Insulation • ArmaFlex UT Insulation • AP/ArmaFlex Insulation 	<ul style="list-style-type: none"> • Tubolit SS Insulation • Tundra SS Insulation
Accessories & Supports	<ul style="list-style-type: none"> • Energy Efficient & Low Total Install Costs • Low Dust or fiber emitting properties • Mold and Mildew Resistance • Tough & Durable • Compliant to all State and City Building Codes 	<ul style="list-style-type: none"> • Insuguard Saddles & Shields • ArmaFix Ecolight Pipe Supports • ArmaFlex Insulation Tape • ArmaFlex 520 Adhesives • Armacell Pre-fabricated Fittings 	<ul style="list-style-type: none"> • Insuguard Saddles & Shields • ArmaFix Ecolight Pipe Supports • ArmaFlex Insulation Tape • ArmaFlex 520 Adhesives • Armacell Pre-fabricated Fittings
Warranty		<ul style="list-style-type: none"> • 15-Year Limited Warranty 	<ul style="list-style-type: none"> • 10-Year Limited Warranty
Support Documents	www.armacell.com/en-US/armacell-solutions-portfolio		

SOLUTIONS PORTFOLIO WARRANTIES

**15-YEAR
LIMITED WARRANTY:**
**Superior Performance
Package-Products**



**10-YEAR
LIMITED WARRANTY:**
**High Performance
Package-Products**



BASIC TERMS AND CONDITIONS FOR SOLUTION PORTFOLIO WARRANTY

- All applicable products defined within the Solution Portfolio must be installed to satisfy the system warranty for the defined package.
- This Warranty applies only to the products noted as the approved system components. Armacell will take no responsibility for any labor or other costs associated with the removal, repair, replacement or disposal of the defective Product materials.
- Product installation must be completed by an AQIP trained installer and installed in accordance with Armacell's North American Application Manual, and all other written and technical specifications of Armacell.
- Any defective Product shall not be discarded, destroyed or altered before inspection by Armacell, or rendered defective or damaged by modifications not made by Armacell, acts of God such as fires, explosions, hurricanes, tornadoes or earthquakes or by materials installed or stored near the Products.
- Owner/Contractor agrees to permit inspection of the Product installation at the Location at time of install and then at various times throughout the warranty term by Armacell and its representatives upon reasonable request during standard business hours.
- A jobsite inspection by Armacell or one of its appointed representatives will be required to validate package compliance and finalize the warranty request.
- Certificate of Warranty to be issued to the Installing Contractor for the identified project and will be effective from time of purchase.

Full Warranty Details will be provided at time of certificate issuance.

AT YOUR SERVICE

At Armacell, we are committed to creating an exceptional customer experience. We understand today's industry trends and challenges and share know-how based on our extensive experience to help you implement your project successfully. We do all we can to give you peace of mind while managing your projects.



ARMAFLEX APPLICATION TRAININGS

To ensure that our insulation materials are installed properly, Armacell has trained thousands of installers around the world. Our Armacell Qualified Installer Program (AQIP) trains several thousand insulators around the world every year. In North America, a combination of online and hands-on training qualifies installers and allows companies to become AQIP-certified.

Valuable tips and tricks

Learn how to expertly install ArmaFlex insulation products.

ARMAWIN – PROFESSIONAL INSULATION CALCULATIONS

With our powerful ArmaWin software, you can carry out all common technical calculations for insulation applications. You can easily determine the minimum insulation thickness required for condensation control, as well as surface temperature, heat flow, temperature changes in flowing and stationary media, freezing times for water pipes and the most economical insulation thickness.



ArmaWin

All-in-one technical insulation calculation tool.

AT YOUR SERVICE



SPECIFICATION SUPPORT

It is challenging to keep up with changing building codes and evolving materials technology. Armacell employs a team of full-time technical experts dedicated to providing Engineers and Specifiers solutions for complex mechanical systems. They can review and update your specs, advise on new innovations and recommend the best insulation solution for your project.

Lunch & Learn

Providing PDH credits for onsite seminars.

EXPERT TECHNICAL SUPPORT

Have a question? We have the most experienced Technical support in the industry and are ready to take your call. Speak to experts with decades of experience who can answer your technical concerns or offer product advice.

On call

Give our Technical team a call if you have questions.



You'll find a wealth of information on our website www.armacell.com. Visit the RESOURCES section to find our DOCUMENT CENTER, and links to ARMAWIN, AQIP TRAINING, ARMACELL ACADEMY, and our ARMACELL ANSWERS video series.

SOLUTIONS PRODUCTS

Tubes



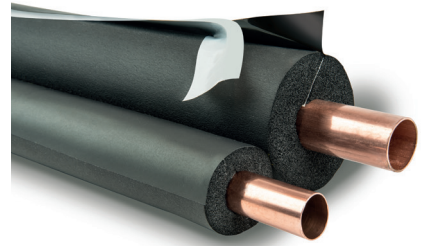
ArmaFlex® Ultima

The first flexible insulation with low smoke emissions for improved fire safety classified by UL to UL 723 at 25/50 for air plenums



AP/ArmaFlex Tubes

Original flexible, closed cell elastomeric tubes in black and white



AP/ArmaFlex LapSeal

Self-sealing tube insulation with reinforced lap seal in black and white



ArmaFlex Shield

Flexible, closed-cell pipe insulation with durable, protective coating



ArmaLight® Tubolit and Tundra

Economical polyethylene insulation with self-seal closure



ArmaFlex UT

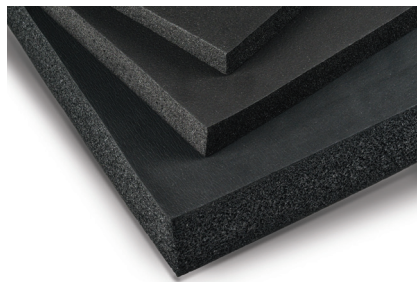
300°F max-use flexible, closed-cell elastomeric insulation

Sheet and Roll



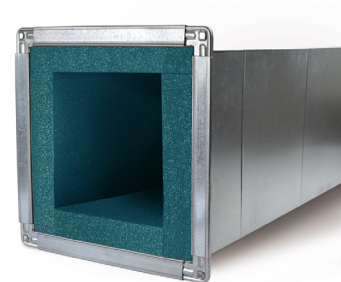
ArmaFlex Ultima

Sheet and roll insulation Classified by UL to UL 723 at 25/50 for air plenums



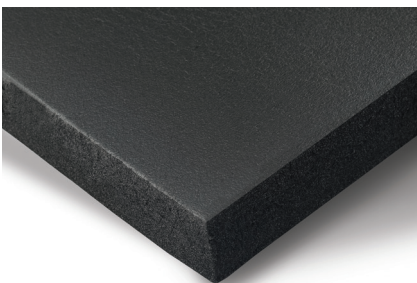
AP/ArmaFlex & AP/ArmaFlex FS

Original fiber-free insulation for thermal applications



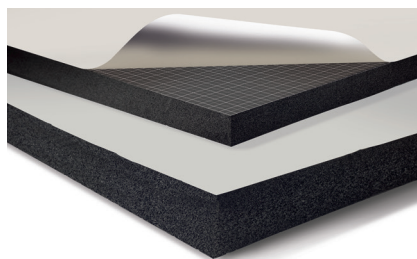
ArmaFlex Ultima Duct Liner

Sheets and rolls are Classified by UL to UL 723 at 25/50



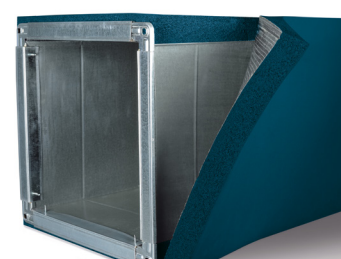
ArmaFlex UT

300°F max-use flexible, closed-cell elastomeric insulation



AP/ArmaFlex SA & AP/ArmaFlex FS SA

Fiber-free insulation for thermal applications in self-adhering format

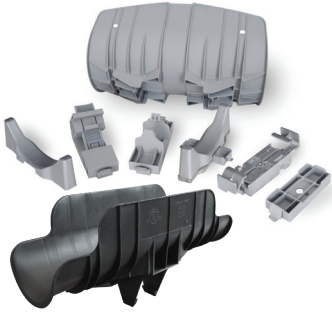


ArmaFlex Ultima Duct Wrap

Sheets and rolls are Classified by UL to UL 723 at 25/50

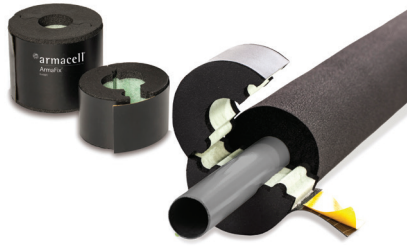
SOLUTIONS PRODUCTS

Accessories



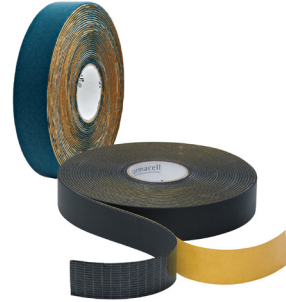
Insuguard® Saddles and Accessories

Tool-free pipe saddle system to simplify installation



ArmaFix® EcoLight Pipe Support

Insulated pipe support with self-adhesive closure



ArmaFlex Insulation Tape

Compatible with AP/ArmaFlex and ArmaFlex Ultima



ArmaFlex Pre-fabricated Fittings

Elastomeric T's, Elbows, P-Traps, and more



ArmaLight Pre-fabricated Fittings

Polyethylene T's and Elbows



ArmaFlex Black LapSeal Tape

Low profile tape for additional security at seams and joints

Adhesives and Coatings



520 Adhesive & 520 Black

Recommended adhesive specially formulated for ArmaFlex insulation



520 BLV & Low VOC Spray Adhesive

Low VOC adhesive alternatives



WB Finish

Latex-based, indoor/outdoor, UV-resistant coating for ArmaFlex insulation



ArmaFlex HT625 Adhesive

Higher temperature adhesive for use with ArmaFlex UT on equipment up to 300°F

OTHER GREAT ARMACELL PRODUCTS AVAILABLE

www.armacell.com

OUTDOOR USE:

Painting with WB Finish or other protective jacketing is required to prevent damage to the insulation in exterior applications and to comply with the insulation protection sections of the International Energy Conservation Code (IECC) and ASHRAE 90.1.

All data and technical information are based on results achieved under the specific conditions defined according to the testing standards referenced. Despite taking every precaution to ensure that said data and technical information are up to date, Armacell does not make any representation or warranty, express or implied, as to the accuracy, content or completeness of said data and technical information. Armacell also does not assume any liability towards any person resulting from the use of said data or technical information. Armacell reserves the right to revoke, modify or amend this document at any moment. It is the customer's responsibility to verify if the product is suitable for the intended application. The responsibility for professional and correct installation and compliance with relevant building regulations lies with the customer. This document does not constitute nor is part of a legal offer to sell or to contract.

At Armacell, your trust means everything to us, so we want to let you know your rights and make it easier for you to understand what information we collect and why we collect it. If you would like to find out about our processing of your data, please visit our **Data Protection Policy**.

© Armacell, 2024. All rights reserved. Trademarks followed by ® or TM are trademarks of the Armacell Group. Microban® is a trademark of Microban Products Company and is used herein with permission. USGBC® and the related logo are trademarks owned by the U.S. Green Building Council and are used herein with permission.

00715 | Armacell | Solutions Portfolio | 112024 | NA | EN-A

ABOUT ARMACELL

As the inventor of flexible foam for equipment insulation and a leading provider of engineered foams, Armacell develops innovative and safe thermal and mechanical solutions that create sustainable value for its customers. Armacell's products significantly contribute to global energy efficiency making a difference around the world every day. With more than 3,300 employees and 25 production plants in 19 countries, the company operates two main businesses, Advanced Insulation and Engineered Foams. Armacell focuses on insulation materials for technical equipment, high-performance foams for acoustic and lightweight applications, recycled PET products, next-generation aerogel technology and passive fire protection systems.

For more information, please visit:
www.armacell.com

