

Compact Cassette (24,000 BTU) Indoor Unit
For Heat-recovery/Heat-pump Airstage VRF System

Job Name	
Location	
Engineer	
Submitted To	
Submitted By	
Reference	

Date	
Approval	
Construction	
Unit No	
Drawing No	

FEATURES

- Compact 2' x 2' size to match ceiling panels
- Quiet 3 speed fan
- Built-in high-lift drain pump
- Built-in IR Receiver
- Support for fresh-air intake kit
- Grille includes built-in modulating louvers
- Grille must be ordered separately (UTG-CCGV)
- Auxiliary heat operation capability
- 10 year Extended Warranty on parts and compressor. See Warranty



CAPACITY

Capacity - Cooling - Btu/h [kW]	24,000 [7]
Capacity - Heating - Btu/h [kW]	27,000 [7.9]

PIPING ACCESSORIES

UTP-AX090A	Separation Tube - 2-Pipe - 90 MBH or Less
UTP-AX180A	Separation Tube - 2-Pipe - 91 to 180 MBH
UTP-AX567A	Separation Tube - 2-Pipe - 180 MBH or More

CONTROLLER

UTY-RNRUZ2	Individual Touch Panel Controller (Wired Remote)
UTY-RSRY	Simple Remote (WITH Master Control) 2-Wire
UTY-RHRY	Simple Remote (WITHOUT Master Control) 2-Wire
UTY-RHKU	Simple Remote (WITHOUT Master Control) (1/16 units)
UTY-LNHU	Wireless Remote Controller (requires IR Receiver)

UTY-DCGY	Central Remote Controller (100 units)
UTY-DTGYZ1	Touch Panel Controller with Internet (400 units)

ACCESSORIES

#N/A	#N/A
UTR-YDZB	Air Outlet Shutter Plate for Compact Cassette
UTZ-KXGC	Insulation Kit for High Humidity for Compact Cassette
UTY-TEKX	External Switch Controller. Use with 3-Wire remotes only.
UTY-XSZX	Remote Sensor for ducted units

WEIGHT AND DIMENSIONS

Enclosure - Net Weight - lbs [kg]	37 [17]
Enclosure - Gross Weight - lbs [kg]	45 [20]
Dimensions - Net (H x W x D) - in [mm]	9-5/8 × 22-7/16 × 22-7/16 [245 × 570 × 570]
Dimensions - Gross (H x W x D) - in [mm]	10-7/16 × 28-3/4 × 24-5/8 [265 × 730 × 625]
Grille Weight Net - lbs [kg]	6 [2.6]
Grille Weight Gross - lbs [kg]	10 [4.5]
Grille Dimensions Net (H x W x D) - in [mm]	1-15/16 × 27-9/16 × 27-9/16 [50 × 700 × 700]
Grille Dimensions Gross (H x W x D) - in [mm]	4-3/4 × 30-1/8 × 29-3/4 [120 × 765 × 755]

ELECTRICAL

Power Source	208 / 230V, 1-Phase, 60Hz
Available Voltage Range - VAC	187 to 253
Input Power - W	84
Full Load Amps - FLA - A	0.62
Max Circuit Breaker - A	15
Minimum Circuit Ampacity - MCA - A	0.78
Fuse - A (V)	3.15 (250)

FAN

Fan Type	Turbo
Airflow Rate - High - CFM [m³/h]	606 [1,030]
Airflow Rate - Medium - CFM [m³/h]	489 [830]
Airflow Rate - Low - CFM [m³/h]	265 [450]

SOUND PRESSURE

Sound Pressure Level - dB(A)	30/44/50
------------------------------	----------

WIRING

Communication Cable	LonWorks (Fujitsu Pink Cable. See AE Bulletin 009)
---------------------	--

PIPING

Connection Pipe Diameter - Liquid (Flare) - in [mm]	ø 3/8 [9.52]
Connection Pipe Diameter - Gas (Flare) - in [mm]	ø 5/8 [15.88]
Connection Pipe Diameter - Drain (ID; OD) - in [mm]	ø 3/4 [19]
Drain-Pump	Built-in
Drain-Pump Lift - in [mm]	27 9/16 [700]

ETL

E.T.L.	3170288
--------	---------

TEMPERATURE SETTINGS

Operating Temp. Cooling (DB) - °F [°C]	64 to 90 [18 to 32]
Operating Temp. Heating (DB) - °F [°C]	50 to 86 [10 to 30]

Note: Specifications are based on the following conditions:
Cooling: Indoor temperature of 80°F (26.7°C) DB/67°F (19.4°C) WB, and outdoor temperature of 95°F (35°C) DB/75°F (23.9°C) WB. Heating: Indoor temperature of 70°F (21.1°C) DB/60°F (15.6°C) WB, and outdoor temperature of 47°F (8.3°C) DB/43°F (6.1°C) WB. Pipe length: 25ft. (7.5m), Height difference: 0ft. (0m) (Outdoor unit – indoor unit).

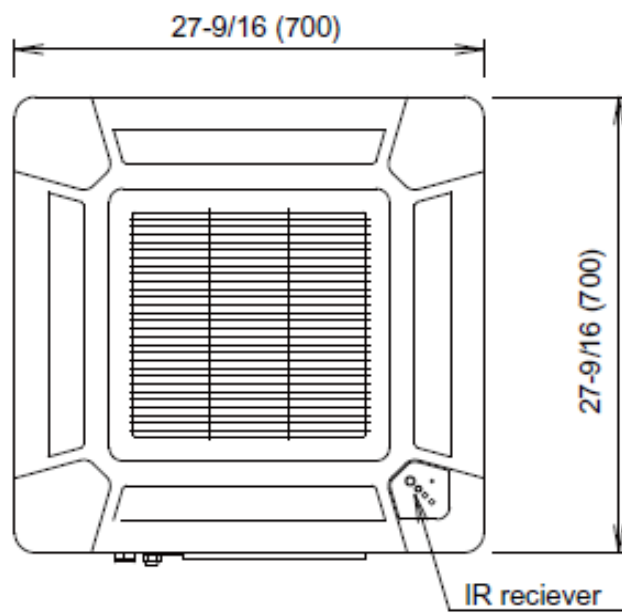


Fujitsu General America, Inc.
353 Route 46 West
Fairfield, NJ 07004
Toll Free: (888) 888-3424
Fax: (973) 836-0453
www.airstagevrf.com

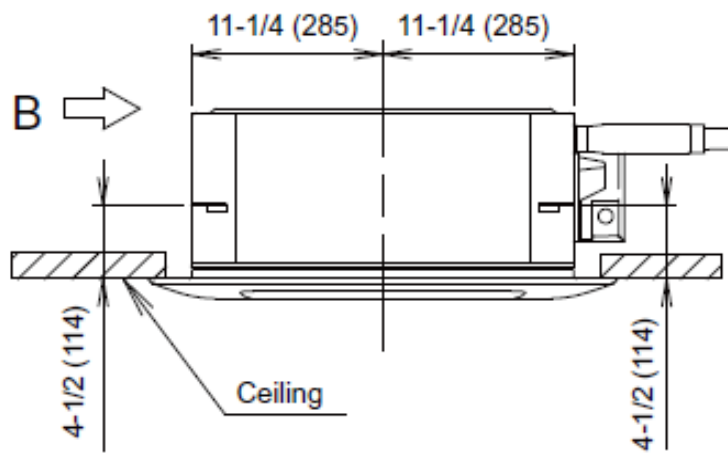
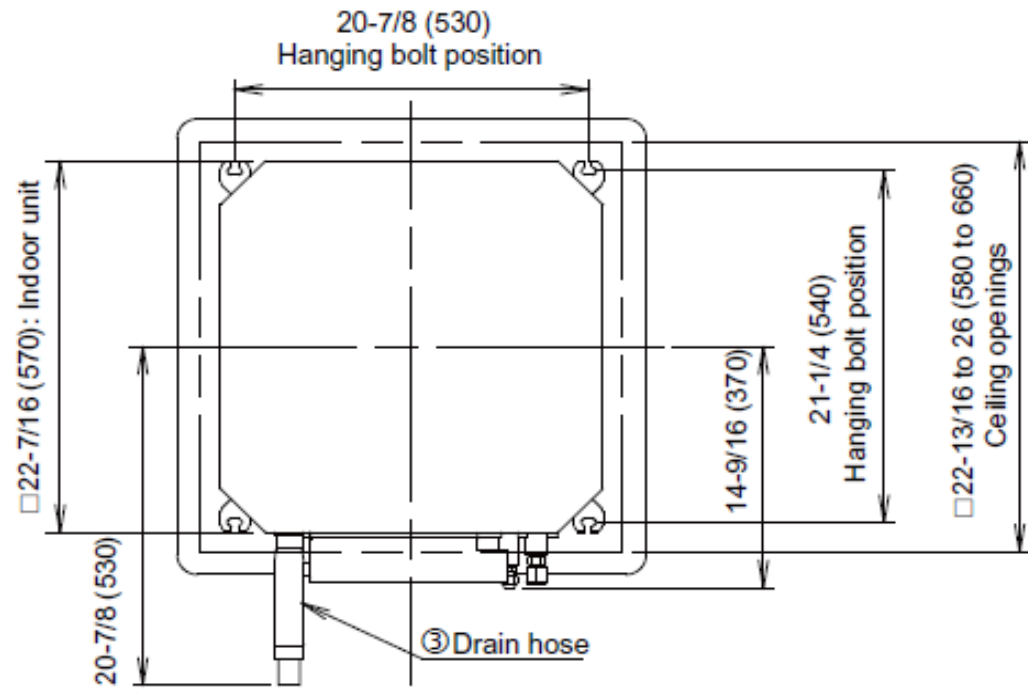
Compact Cassette (24,000 BTU) Indoor Unit
For Heat-recovery/Heat-pump Airstage VRF System

DIMENSIONS

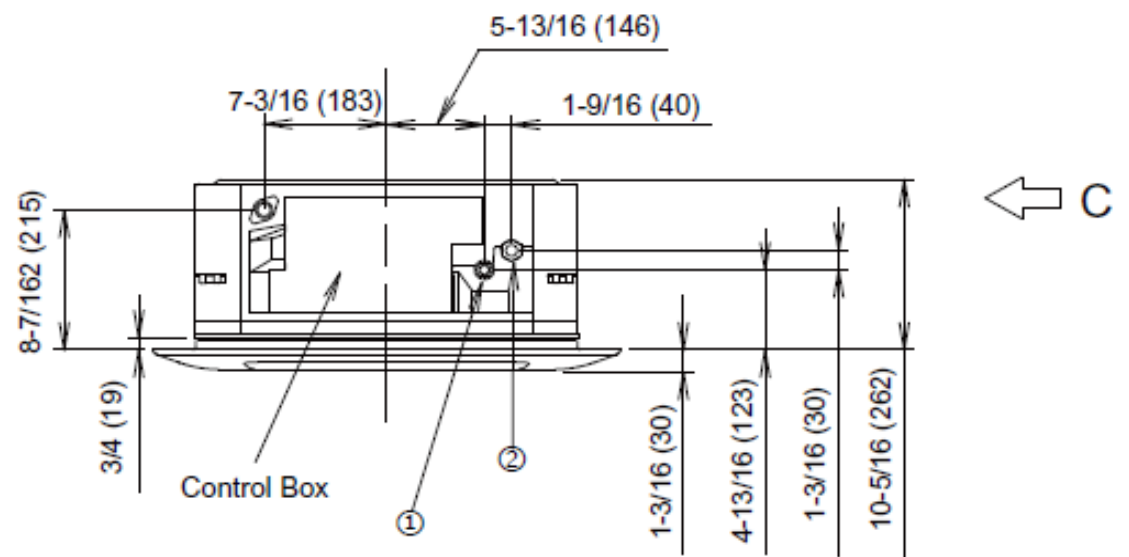
Unit: In. (mm)



View A



View B



View C



View B

