

Medium Static Pressure Duct (24,000 BTU) Indoor Unit For Heat-recovery/Heat-pump Airstage VRF System

Job Name _____
 Location _____
 Engineer _____
 Submitted To _____
 Submitted By _____
 Reference _____

Date _____
 Approval _____
 Construction _____
 Unit No _____
 Drawing No _____

FEATURES

- Quiet 3-speed fan
- Slim design require Small height clearance 10-1/4"
- Adjustable Static pressure from 0.12 to 0.6 in.WG
- Flexible air intake connection (Back or bottom)
- Very low power usage
- Dual direction drain piping
- Auxiliary heat operation capability
- 10 year Extended Warranty on parts and compressor. See Warranty Statement.



STATIC PRESSURE

Static Pressure Range - in.WG [Pa]	0 to 0.60 [0 to 150]
Standard Static Pressure - in.WG [Pa]	0.16 [40]

PIPING ACCESSORIES

UTP-AX090A	Separation Tube - 2-Pipe - 90 MBH or Less
UTP-AX180A	Separation Tube - 2-Pipe - 91 to 180 MBH
UTP-AX567A	Separation Tube - 2-Pipe - 180 MBH or More

CONTROLLER

UTY-RNRUZZ	Individual Touch Panel Controller (Wired Remote)
UTY-PSRY	Simple Remote (WITH Master Control) 2-Wire
UTY-RHRY	Simple Remote (WITHOUT Master Control) 2-Wire
UTY-LNHU	Wireless Remote Controller (requires IR Receiver)

UTY-DCGY	Central Remote Controller (100 units)
UTY-DTGYZ1	Touch Panel Controller with Internet (400 units)

ACCESSORIES

UTD-LF25NA	Long Life Filter
UTD-SF045T	Flange (Square) for Duct IU
UTD-RF204	Flange (Round) for Duct IU
UTZ-PU1NBA	Drain Pump Kit - For Medium Static Ducted Units
UTY-TEKX	External Switch Controller. Use with 3-Wire remotes only.

UTY-XSZX	Remote Sensor for ducted units
----------	--------------------------------

WEIGHT AND DIMENSIONS

Enclosure - Net Weight - lbs [kg]	86 [39]
Enclosure - Gross Weight - lbs [kg]	104 [47]
Dimensions - Net (H x W x D) - in [mm]	10-5/16 x 44-11/16 x 27-9/16 [270 x 1,135 x 700]
Dimensions - Gross (H x W x D) - in [mm]	11-13/16 x 51-15/16 x 31-1/8 [300 x 1,320 x 790]

CAPACITY

Capacity - Cooling - Btu/h [kW]	24,000 [7.0]
Capacity - Heating - Btu/h [kW]	27,000 [7.9]

ELECTRICAL

Power Source	208 / 230V, 1-Phase, 60Hz
Available Voltage Range - VAC	187 to 253
Input Power - W	125
Full Load Amps - FLA - A	0.88
Max Circuit Breaker - A	15
Minimum Circuit Ampacity - MCA - A	1.1
Fuse - A (V)	5 (250)

FAN

Fan Type	2X (Sirocco)
Airflow Rate - High Medium High - CFM [m³/h]	860 [1,460] 807 [1,370]
Airflow Rate - Medium Medium Low - CFM [m³/h]	760 [1,290] 701 [1,190]
Airflow Rate - Low Quiet - CFM [m³/h]	648 [1,110] 589 [1,000]

SOUND PRESSURE

Sound Pressure Level - dB(A)	36/34/32/30/29/28
------------------------------	-------------------

WIRING

Communication Cable	LonWorks (Fujitsu Pink Cable. See AE Bulletin 009)
---------------------	--

PIPING

Connection Pipe Diameter - Liquid (Brazing) - in [mm]	ø 3/8 [9.52]
Connection Pipe Diameter - Gas (Brazing) - in [mm]	ø 5/8 [15.88]
Connection Pipe Diameter - Drain (ID; OD) - in [mm]	ø 3/4 [19]
Drain-Pump	Optional

ETL

E.T.L.	91987
--------	-------

TEMPERATURE RANGES

Operating Temp. Cooling (DB) - °F [°C]	64 to 88 [18 to 31]
Operating Temp. Heating (DB) - °F [°C]	50 to 88 [10 to 31]

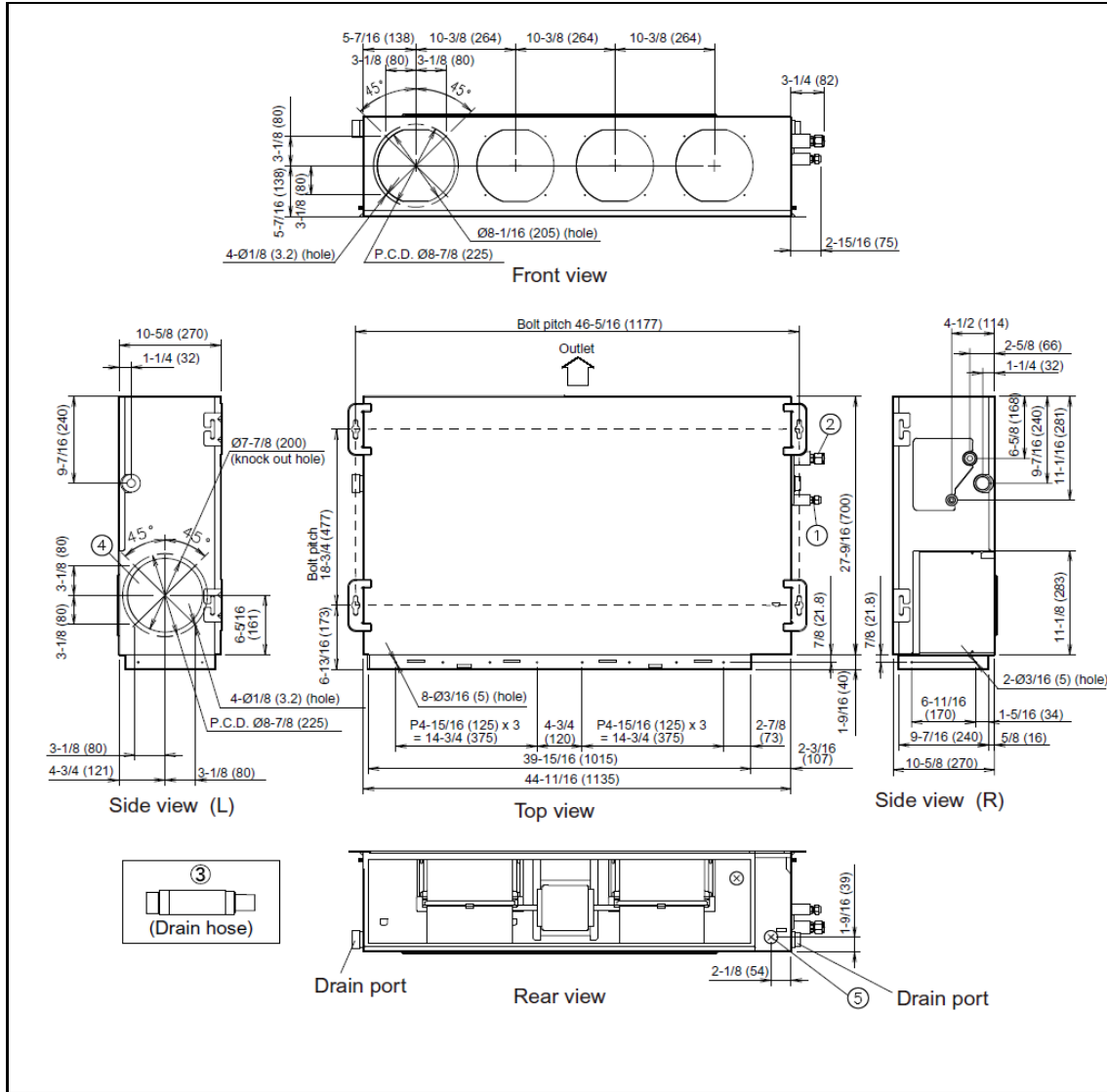
Note: Specifications are based on the following conditions:
 Cooling: Indoor temperature of 80°F (26.7°C) DB/67°F (19.4°C) WB, and outdoor temperature of 95°F (35°C) DB/75°F (23.9°C) WB. Heating: Indoor temperature of 70°F (21.1°C) DB/60°F (15.6°C) WB, and outdoor temperature of 47°F (8.3°C) DB/43°F (6.1°C) WB. Pipe length: 25ft. (7.5m), Height difference: 0ft. (0m) (Outdoor unit - indoor unit).

SUBMITTAL ARUM24TLAV2

Medium Static Pressure Duct (24,000 BTU) Indoor Unit
For Heat-recovery/Heat-pump Airstage VRF System

DIMENSIONS

Unit: In. (mm)



Fujitsu General America, Inc.
353 Route 46 West
Fairfield, NJ 07004
Toll Free: (888) 888-3424
Fax: (973) 836-0453
www.airstagevrf.com